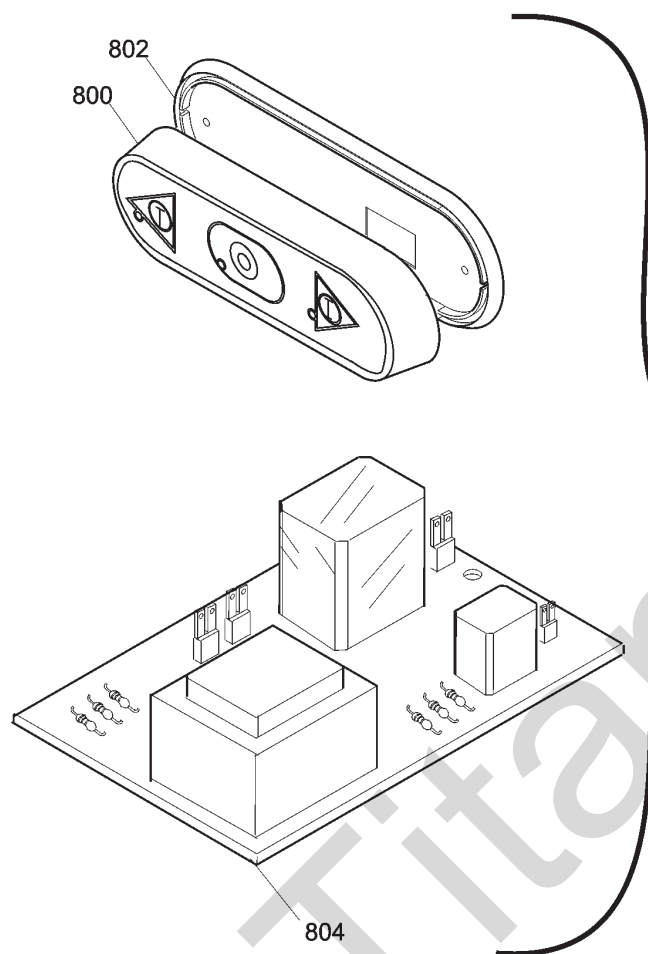


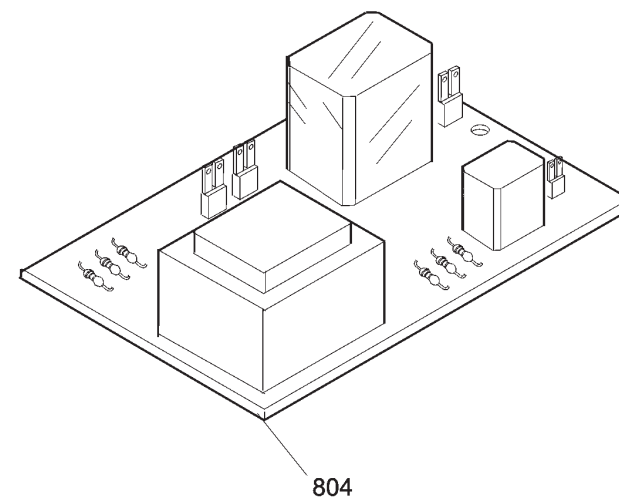
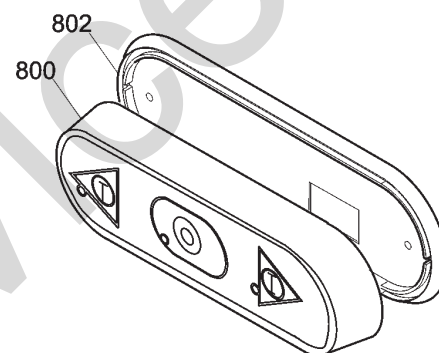
TC / IP

fino al / until 05/2007



Ordinare / Order
800+802+804

dal / from 06/2007



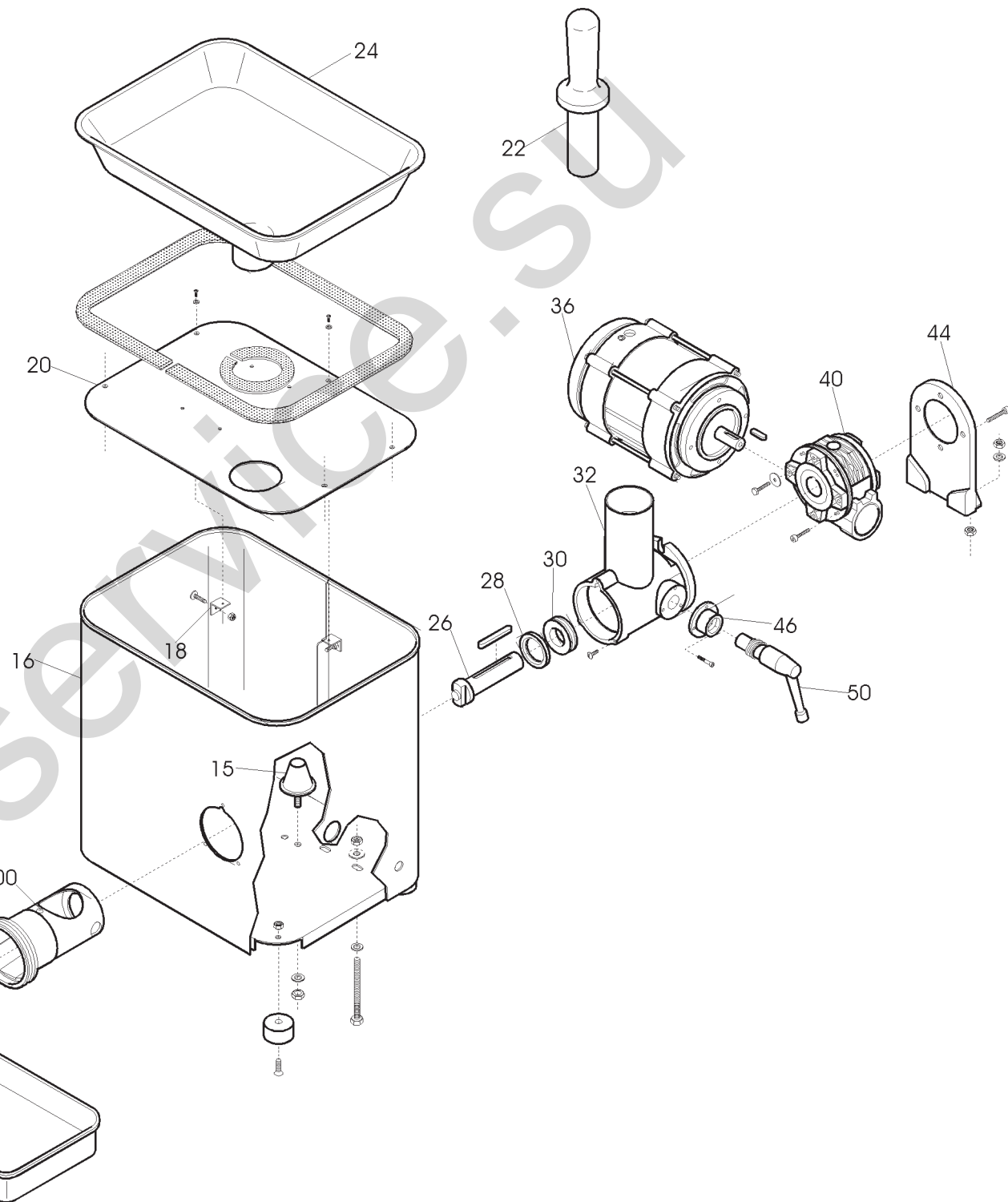
Unger

00 14 B 12 10 B 08 B 08 B 04 C 04 D 04 B 02

1/2 Unger

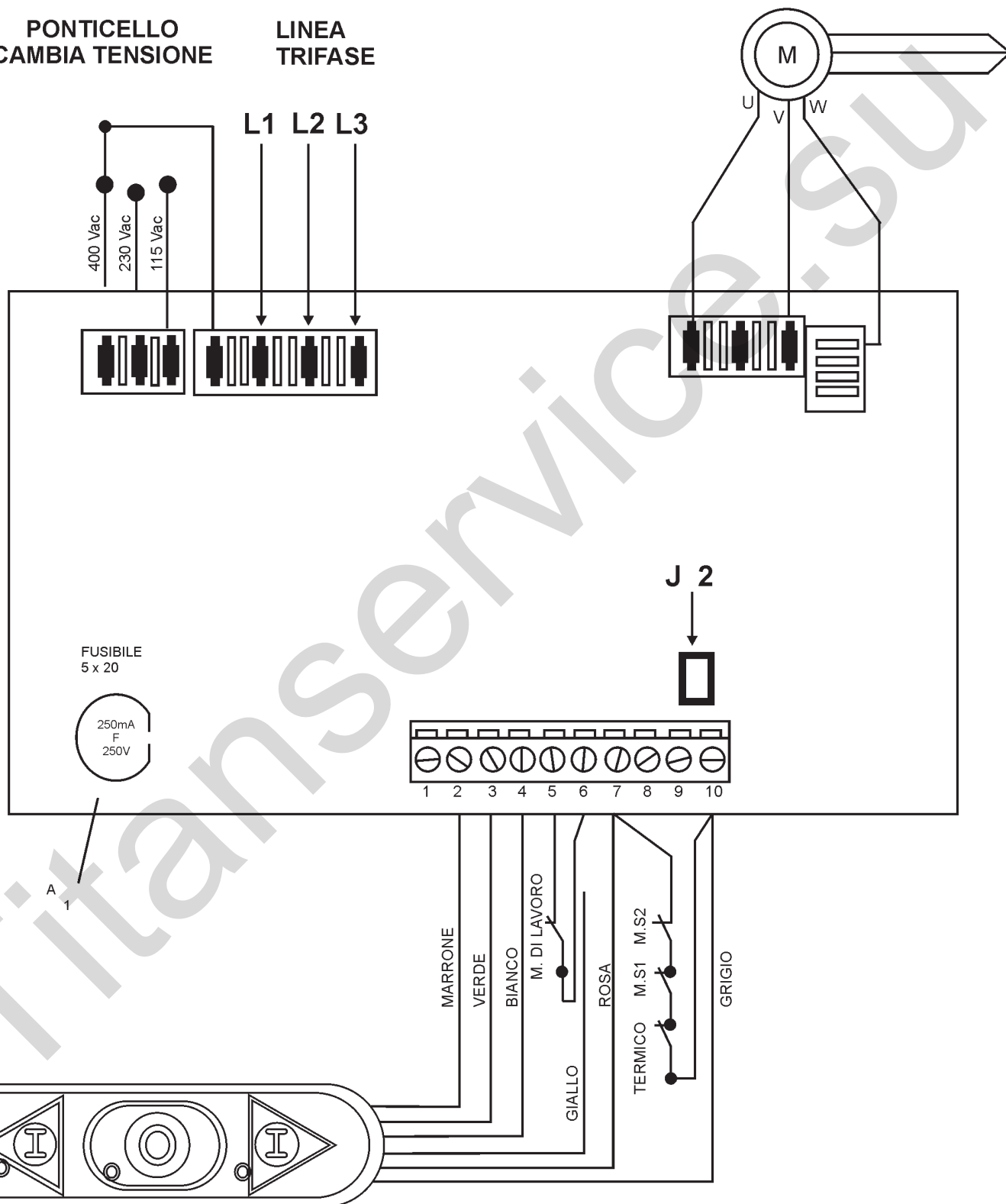
00 14 B 12 10 B 08 B 03 04 C 04 B 02

The diagram illustrates the exploded view of two mechanical assemblies. The top assembly is labeled 'Unger' and the bottom assembly is labeled '1/2 Unger'. Both assemblies consist of a main cylindrical body (00) with a threaded section (14 B) and a central shaft (12). The shaft is secured by a nut (10 B) and a washer (08 B). The shaft passes through a series of components: a flange (04 C), a washer (04 B), a flange (04 D), and a flange (02). The '1/2 Unger' assembly also includes a flange (03) and a flange (04 B) in its stack. The components are shown in an exploded view, indicating their relative positions and assembly sequence.



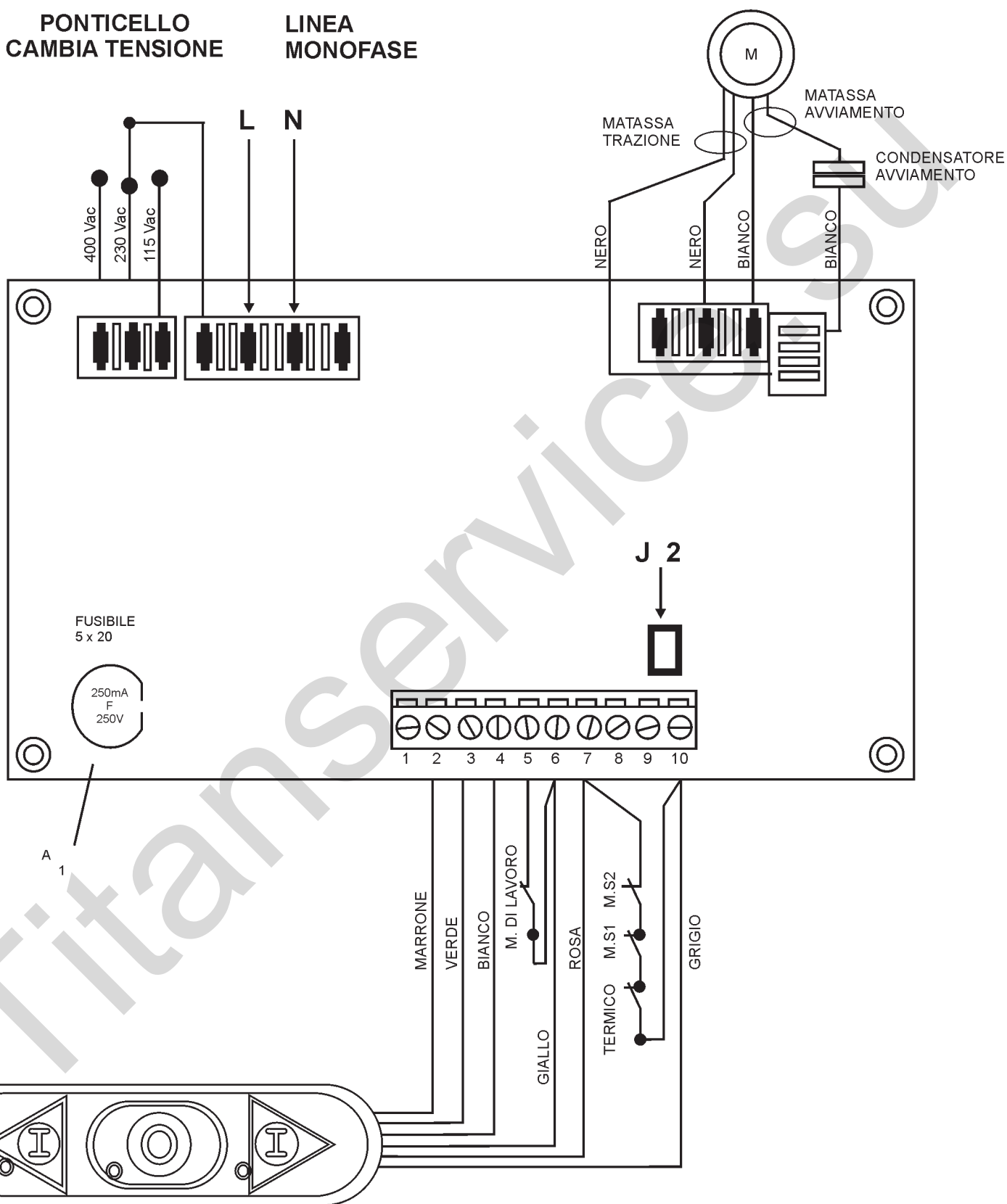
PONTICELLO
CAMBIA TENSIONE

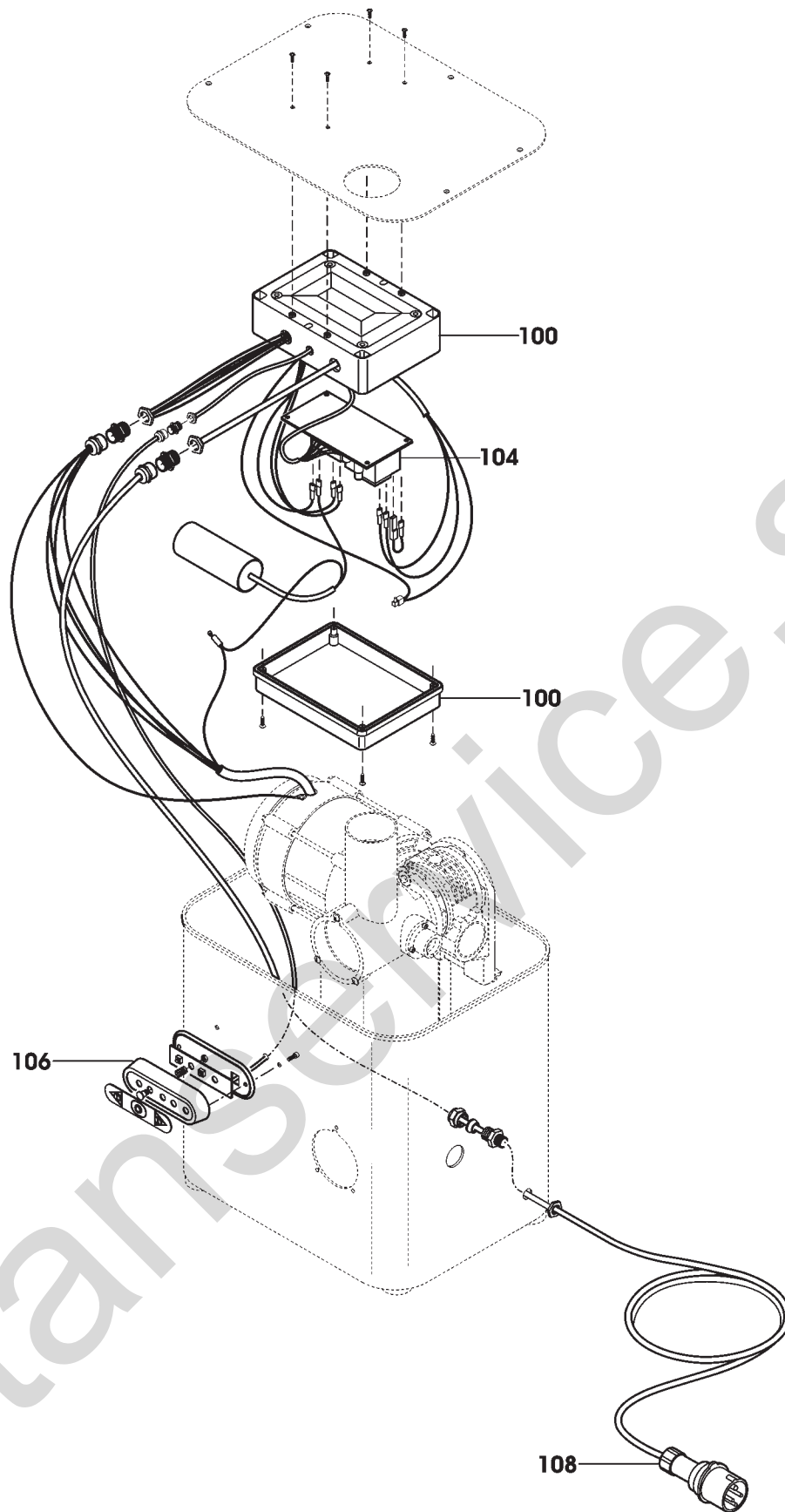
LINEA
TRIFASE



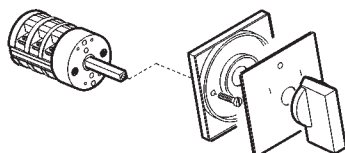
**PONTICELLO
CAMBIA TENSIONE**

**LINEA
MONOFASE**





118



MOD. NO CE

Pulsantiera TC 12 RIO CE TAV. UNICA

Riferir Nome prodotto	Codice
800 CORPO PULSANTI.INVERSIONE TAGL.	LF1033021
802 GUARNIZIONE PULSANT.NEUTRA TONDA	19563034
804 SCHEDA INVERSIONE TC-ME R3 EQ.	LF1033031
804 SCHEDA INVERSIONE TC-ME R3 EQ.	LF1033031
0 PERNO RIFERIMENTO BOCCHIE TC	LF2032105
2 GHIERA INOX TC 12	LF2031003
3 ANELLO DIST. INOX STRETTO R70	LF15311DDX
10 A PERNO ELICA TC 12	LF2031004
10 B PERNO ELICA TC 12 UNGER	LF2031102
12 ELICA INOX LUCIDA TCX-TCR 12	LF2038010
14 A BOCCA INOX TC 12	LF2031001
14 B BOCCA UNGER TC 12	LF2031101
15 PIEDINO ANTIVIBR. CONICO TC 12 RIX	LF1439200
16 CARENATURA COMPLETA TC12/22 RIX	LF2038301
18 ANGOLARI CHIUS.SUP.TC12-22 RIX	LF2038305
20 CHIUSURA SUP. TC 12-22 RIX	LF2038303
22 PESTELLO TC 12-22	LF2032017
24 TRAMOGGIA INOX TC 22 FRZ	LF2039201B
26 PERNO TRASCINATORE TC 22 NEW	LF2039212
28 ANELLO TENUTA 35-50-5 TC FRZ	LF1239203
30 CUSCINETTO REGGISPINTA 51205 TC FRZ	LF1139201
32 CORPO ALLUMINIO TC 12-22	LF2038309
36A MOTORE TRITAC.TCX-TCR 12 230/50 HZ	LF1838003
36B MOTORE TRITAC.TCX-TCR 12 380/50 HZ	LF1838001
40 RIDUTTORE 050 FB B14 TC 22	LF2039210
44 PIEDINO SUP.RID.050 FB B14 TC22	LF2039211
46 BOCCOLA BLOCC. BOCCA TC 32	LF2033015
50 VITE BLOCC. BOCCA TC 32	LF2033016
100 CASSETTA GW 44207	LF1010704
104 SCHEDA INVERSIONE TC-ME R3 EQ.	LF1033031
108A SPINE CEE 2P + T IP	LF1010015
108B SPINE CEE 3P + T IP	LF1010014
118 INVERTITORE TC32/IP 50-100	LF1033001