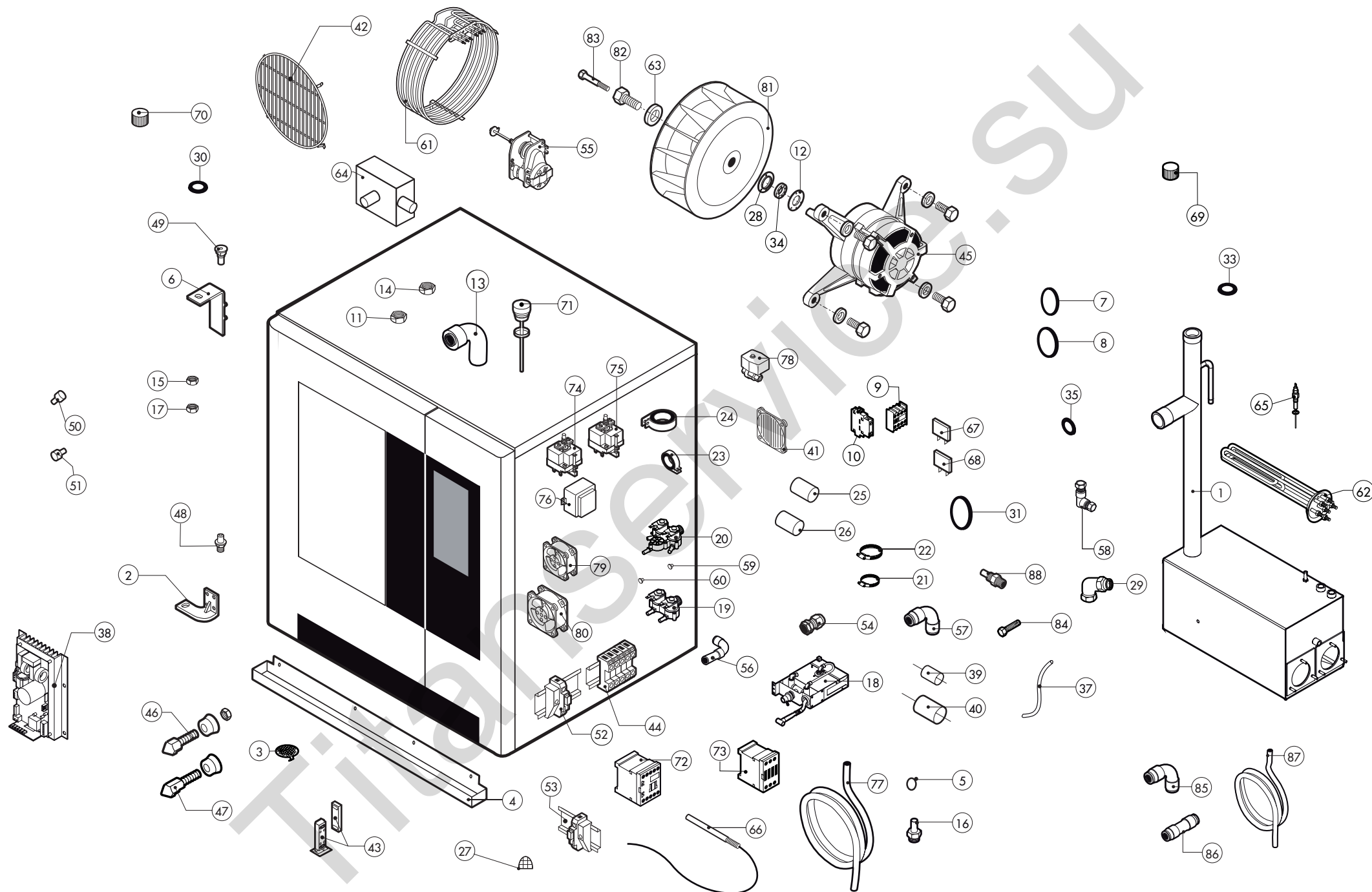


**ATTENZIONE:** PER TENSIONI SPECIALI, SPECIFICARE SEMPRE IL MODELLO DI FORNO ED IL NUMERO DI MATRICOLA  
**ATTENTION:** FOR SPECIAL VOLTAGES, PLEASE ALWAYS SPECIFY THE OVEN MODEL AND THE SERIAL NUMBER

**ATTENTION:** POUR TENSIONS SPÉCIALES, MERCI DE SPÉCIFIER TOUJOURS LE MODÈLE DU FOUR ET LE NUMÉRO DE SÉRIE  
**ACHTUNG:** BEI SONDERSPANNUNGEN, BITTE IMMER OFEN-MODELL UND SERIENNUMMER GEBEN.

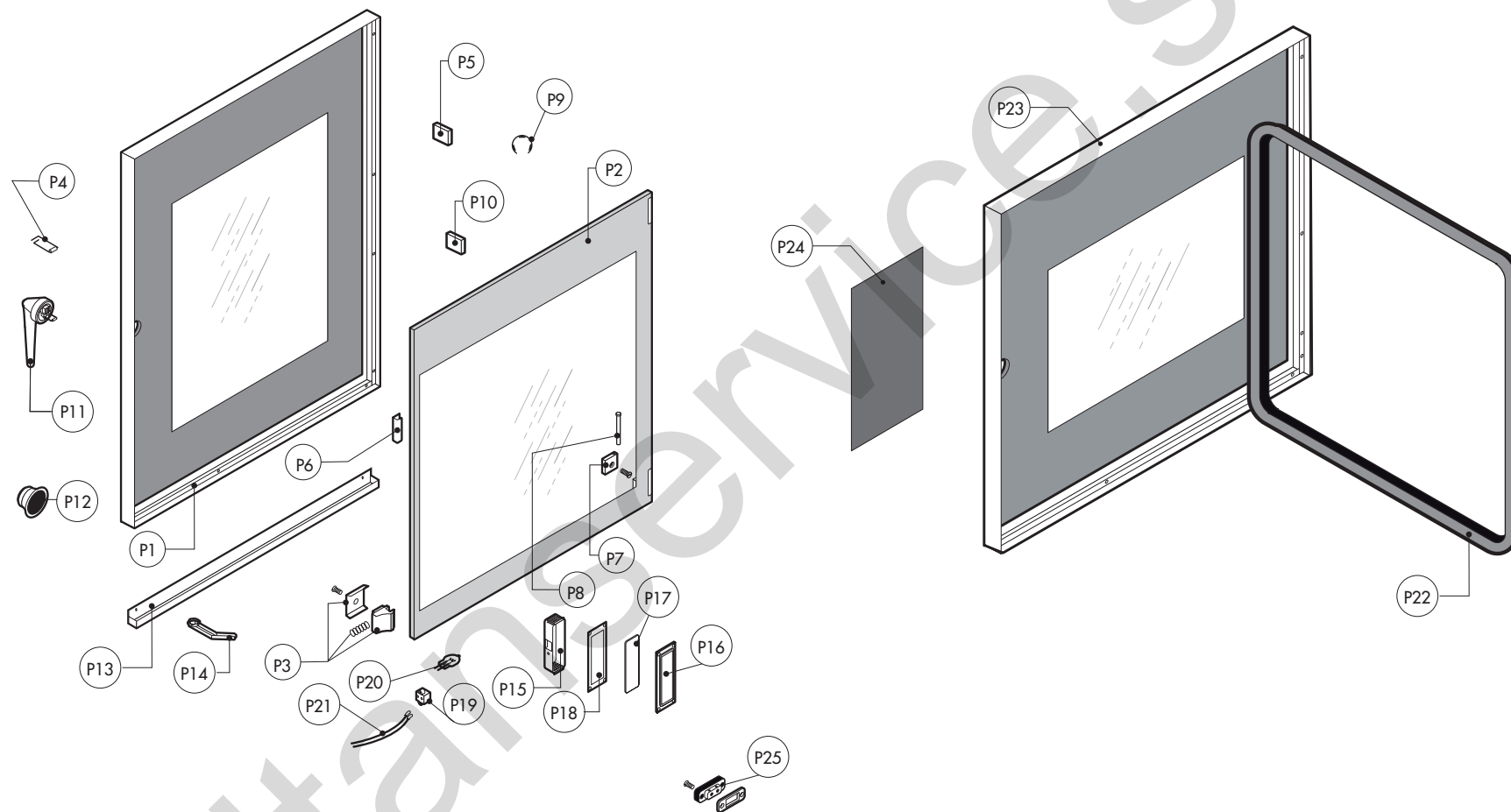
ed.0614



| POS. | COD.      | Pz.    | DESCRIZIONE                                                           | DESCRIPTION                                                            | DESCRIPTION                                                          | BESCHREIBUNG                                                       | DESCRIPCIÓN                                                            |
|------|-----------|--------|-----------------------------------------------------------------------|------------------------------------------------------------------------|----------------------------------------------------------------------|--------------------------------------------------------------------|------------------------------------------------------------------------|
| 1    | R14217020 | 1      | BOILER COMPLETO GEMT10/NA-SAEB101                                     | STEAM GENERATOR ASSEMBLY                                               | CHAUDIERE COMPLETE                                                   | DAMPFERZEUGER KOMPLETT                                             | BOILER COMPLETO                                                        |
| 2    | R11207240 | 1      | ASS.CERNIERA INF. M-V/061-101-102 2005                                | LOWER DOOR HINGE                                                       | CHARNIERE INFÉRIEURE PORTE                                           | UNTERES SCHARNIER                                                  | BISAGRA INFERIOR                                                       |
| 3    | R10201710 | 1      | ASS.FILTRO DI SCARICO D.86/44.5 M/210-12                              | DRAIN FILTER                                                           | FILTRE ENCEINTE                                                      | ABFLUSSFILTER                                                      | FILTRO DESAGUE                                                         |
| 4    | R69180210 | 1      | BACINELLA SCARICO N/S071-101 2014                                     | DRIP TRAY                                                              | PLATEAU D'ÉGOUTTEMENT                                                | WASSERTROPFASSE                                                    | BANDEJA DEL GOTEÓ                                                      |
| 5    | R62070023 | 5      | BICONO PILOTA TUBO D.6 905.                                           | BICONE D.6                                                             | BICONE D. 6                                                          | KEGEL D.6                                                          | BICONO D.6                                                             |
| 6    | R14402130 | 1      | CERNIERA SUPERIORE PORTA N/S 2014                                     | UPPER DOOR HINGE                                                       | CHARNIERE SUPÉRIEURE PORTE                                           | OBERES SCHARNIER                                                   | BISAGRA SUPERIOR                                                       |
| 7    | R70010360 | 1      | ANELLO V-SEAL VA-0040 NBR                                             | RING V-SEAL VA-0040 NBR                                                | ANNEAU V-SEAL VA-0040 NBR                                            | RING V-SEAL VA-0040 NBR                                            | ANILLO V-SEAL VA-0040 NBR                                              |
| 8    | R70010370 | 2      | ANELLO V-SEAL VA-0050 NBR                                             | RING V-SEAL VA-0050 NBR                                                | ANNEAU V-SEAL VA-0050 NBR                                            | RING V-SEAL VA-0050 NBR                                            | ANILLO V-SEAL VA-0050 NBR                                              |
| 9    | R65140420 | 1      | CONT.AUS. 1L+1R 3RH1911-1FA11 SIEMENS                                 | AUX.CONTACT 1L+1R                                                      | CONTACT AUXILIAIRE 1L+1R                                             | ZUSÄTZLICHER KONTAKT 1L+1R                                         | CONTACTO AUXILIAR 1L+1R                                                |
| 10   | R65140430 | 3      | CONT.AUS. 1L+1R 3RH1921-1EA11 SIEMENS                                 | AUX.CONTACT 1L+1R                                                      | CONTACT AUXILIAIRE 1L+1R                                             | ZUSÄTZLICHER KONTAKT 1L+1R                                         | CONTACTO AUXILIAR 1L+1R                                                |
| 11   | R65240040 | 1      | CONTRODADO PER RACCORDO 107 Z/29                                      | CABLE GLAND LOCK NUT                                                   | CONTRE-ECROU POUR RONDELLE FIXATION                                  | MUTTER                                                             | CONTRÓDADO PASACABLE                                                   |
| 12   | R58003850 | 1      | CONTROFLANGIA GUARN. GRANDE                                           | MOTOR GASKET BRASS COUNTER FLANGE                                      | CONTRE- BRIDE JOINT MOTEUR                                           | GEGENFLANSCH F. MOTORDICHTUNG                                      | CONTRABRIDA JUNTA MOTOR                                                |
| 13   | R62280038 | 1      | CURVA C/MORSET.HTS-HTSW X TUBO D.50 D.50X                             | CURVE WITH TERMINAL                                                    | COURBE AVEC BORNIER                                                  | KURVE MIT KLEMM                                                    | CURVA CON REGLETERA                                                    |
| 14   | R58004030 | 1      | DADO INOX 1"1/4X8 M/110-210-220 031010                                | NUT                                                                    | ECROU                                                                | MUTTER                                                             | TUERCA                                                                 |
| 15   | R58004050 | 1      | DADO PER PERNO CERNIERA REG. M/106-220                                | NUT FOR UPPER DOOR HINGE                                               | ECROU CHEVILLE CHARNIERE SUPÉRIEURE                                  | MUTTER F. OBERES SCHARNIERSTIFT                                    | TUERCA PARA PERNO BISAGRA SUPERIOR                                     |
| 16   | R62060223 | 5      | DADO PILOTA TUBO D.6 0903/1.                                          | NUT D.6                                                                | ECROU D. 6                                                           | MUTTER D.6                                                         | DADO D.6                                                               |
| 17   | R58000360 | 1      | DADO PER PERNO CERNIERA REG. N/S 2014                                 | NUT FOR UPPER DOOR HINGE                                               | ECROU CHEVILLE CHARNIERE SUPÉRIEURE                                  | MUTTER F. OBERES SCHARNIERSTIFT                                    | TUERCA PARA PERNO BISAGRA SUPERIOR                                     |
| 18   | R62200172 | 1      | DOCCIONE AV. N071/101/072/102 2014                                    | SHOWER KIT                                                             | KIT DOUCHETTE                                                        | HANDBRAUSESATZ                                                     | KIT DUCHA                                                              |
| 19   | R65110210 | 1      | E.V. 2 VIE 220V 50HZ X J.G. CON ATTACC FINO ALLA SETTIMANA 10/2015    | SOLENOID VALVE 2 VIE 220V 50HZ UNTIL WEEK 10/2015                      | ELECTROVANNE 2 VIE 220V 50HZ ÉLIMINÉ DU SEMAINE 10/2015              | MAGNETVENTIL 2 VIE 220V 50HZ BIS WOCHE 10/2015                     | ELECTROVALVULA 2 VIE 220V 50HZ ELIMINATO DEL SEMANA 10/2015            |
| 19   | R65110330 | 1      | E.V. 2 VIE 230V 50/60HZ OUT J.G. D.10 DALLA SETTIMANA 10/2015         | SOLENOID VALVE 2 VIE 230V 50/60HZ OUT J.G. D.10 SINCE WEEK 10/2015     | ELECTROVANNE 2 VIE 230V 50/60HZ OUT J.G. D.10 DU SEMAINE 10/2015     | MAGNETVENTIL2 VIE 230V 50/60HZ OUT J.G. D.10 VOM WOCHE 10/2015     | ELECTROVALVULA 2 VIE 230V 50/60HZ OUT J.G. D.10 DEL SEMANA 10/2015     |
| 20   | R65110240 | 1      | E.V. 3 VIE 2P+1D 220V/50HZ J.G.CON ATTACC FINO ALLA SETTIMANA 10/2015 | SOLENOID VALVE 3 VIE 220V 50HZ UNTIL WEEK 10/2015                      | ELECTROVANNE 3 VIE 220V 50HZ ÉLIMINÉ DU SEMAINE 10/2015              | MAGNETVENTIL 3 VIE 220V 50HZ BIS WOCHE 10/2015                     | ELECTROVALVULA 3 VIE 220V 50HZ ELIMINATO DEL SEMANA 10/2015            |
| 20   | R65110360 | 1      | E.V. 3 VIE 2P+1D 230V 50/60HZ OUT J.G. D10 DALLA SETTIMANA 10/2015    | SOLENOID VALVE 3VIE 2P+1D 230V 50/60HZ OUT J.G. D10 SINCE WEEK 10/2015 | ELECTROVANNE 3VIE 2P+1D 230V 50/60HZ OUT J.G. D10 DU SEMAINE 10/2015 | MAGNETVENTIL3VIE 2P+1D 230V 50/60HZ OUT J.G. D10 VOM WOCHE 10/2015 | ELECTROVALVULA 3VIE 2P+1D 230V 50/60HZ OUT J.G. D10 DEL SEMANA 10/2015 |
| 21   | R61630011 | 2      | FASCETTE ZINC.12-22/9                                                 | METAL CLAMPS                                                           | COLLIER DE SERRAGE                                                   | VERZINKTE SCHELLEN                                                 | ABRAZADERA                                                             |
| 22   | R61630031 | 8      | FASCETTE ZINC.40-60/9                                                 | METAL CLAMPS 40-60/9                                                   | COLLIER DE SERRAGE 40-60/9                                           | VERZINKTE SCHELLEN 40-60/9                                         | ABRAZADERA 40-60/9                                                     |
| 23   | R65280480 | 1      | FERRITE TOROIDALE FT25                                                | FERRITE FT25                                                           | FERRITE FT25                                                         | FERRIT FT25                                                        | FERRITA FT25                                                           |
| 24   | R65280510 | 1      | FERRITE TOROIDALE FT58                                                | FERRITE FT58                                                           | FERRITE FT58                                                         | FERRIT FT58                                                        | FERRITA FT58                                                           |
| 25   | R65280240 | 1      | FILTRO FLC470501F                                                     | INTERFERENCE SUPPRESSOR                                                | FILTRE ANTIPARASITES                                                 | STOERSCHUTZFILTER                                                  | FILTRO                                                                 |
| 26   | R65280250 | 1      | FILTRO DI POTENZA RC 3/4KW-PA 575V                                    | SUPPRESSOR                                                             | FILTRE                                                               | FILTER                                                             | FILTRO                                                                 |
| 27   | R69180250 | 1      | FILTRO SCARICO BACINELLA                                              | SUPPRESSOR                                                             | FILTRE                                                               | FILTER                                                             | FILTRO                                                                 |
| 28   | R58003840 | 1      | FLANGIA GUARN. GRANDE                                                 | MOTOR GASKET BRASS FLANGE                                              | BRIDE JOINT MOTEUR                                                   | FLANSCH F. MOTORDICHTUNG                                           |                                                                        |
| 29   | R62080093 | 1      | GIUNTO 3 PZ.CURVO MF 1"                                               | COUPLING                                                               | COUPLAGE                                                             | VERBINDUNG                                                         | ENGANCHE                                                               |
| 30   | R70050150 | 1      | GUARNIZIONE X TAPPO 2" PLAST.G40005                                   | GASKETS                                                                | JOINT                                                                | RINGDICHTUNG                                                       | JUNTA                                                                  |
| 31   | R70010130 | 1      | GUARNIZIONE SILICONE ROSSO 80x50,3x3                                  | RED GASKETS 80x50,3x3                                                  | JOINT ROUGE 80x50,3x3                                                | ROTEN DICHTUNG 80x50,3x3                                           | JUNTA ROJA 80x50,3x3                                                   |
| 32   | R70010150 | 1      | GUARNIZIONE SILICONE ROSSO 55x35x3                                    | RED GASKETS 55x35x3                                                    | JOINT ROUGE 55x35x3                                                  | ROTEN DICHTUNG 55x35x3                                             | JUNTA ROJA 55x35x3                                                     |
| 33   | R70050140 | 1      | GUARNIZIONE X TAPPO BOYLER PLAST. G40015                              | GASKETS                                                                | JOINT                                                                | RINGDICHTUNG                                                       | JUNTA                                                                  |
| 34   | R70020050 | 1      | GUARNIZIONE MARK IV MLA 2400.02.05                                    | GASKETS                                                                | JOINT                                                                | RINGDICHTUNG                                                       | JUNTA                                                                  |
| 35   | R70010030 | 1      | GUARNIZIONE OR 6,07 X 1,78 SILICONE                                   | GASKETS                                                                | JOINT                                                                | RINGDICHTUNG                                                       | JUNTA                                                                  |
| 36   | R70010210 | 1      | GUARNIZIONE OR NBR 70 18,72x2,62 C.3075                               | GASKET OR 18,72x2,62                                                   | JOINT OR 18,72x2,62                                                  | RINGDICHTUNG OR 18,72x2,62                                         | JUNTA OR 18,72x2,62                                                    |
| 37   | R80120030 | 0,08 m | TUBO SILICONE ROSSO SR60 18/13.                                       | PIPE                                                                   | TUBE                                                                 | LEITUNG                                                            | TUBO                                                                   |
| 38   | R65140890 | 2      | INVERTER 0.5KW MOT.INF.A001M005XSB X RIC                              | INVERTER                                                               | INVERSEUR                                                            | INVERTER                                                           | INVERSOR                                                               |
| 39   | R70060080 | 1      | MANICOTTO SILICONE D.13X18X80                                         | SILICON SLEEVE                                                         | SILICONE SLEEVE                                                      | SILIKONHÜLLE                                                       | FUNDA DE SILICONA                                                      |
| 40   | R70060040 | 4      | MANICOTTO SILICONE D.50X50X3                                          | SILICON SLEEVE                                                         | SILICONE SLEEVE                                                      | SILIKONHÜLLE                                                       | FUNDA DE SILICONA                                                      |
| 41   | R75300020 | 1      | MASCHERINA VENTILATORE D.120 PER VENT.                                | FAN GUARD GRID D.120                                                   | GRILLE VENTILATEUR D.120                                             | VENTILATORSCHUTZGITTER D.120                                       | REJILLA VENTILADOR D.120                                               |

| POS. | COD.      | Pz.  | DESCRIZIONE                                                                     | DESCRIPTION                                                  | DESCRIPTION                                       | BESCHREIBUNG                                   | DESCRIPCIÓN                                    |
|------|-----------|------|---------------------------------------------------------------------------------|--------------------------------------------------------------|---------------------------------------------------|------------------------------------------------|------------------------------------------------|
| 42   | R75300070 | 1    | MASCHERINA VENTILATORE D.350 N/S101 2014                                        | FAN GUARD GRID D.350                                         | GRILLE VENTILATEUR D.350                          | VENTILATORSCHUTZGITTER D.350                   | REJILLA VENTILADOR D.350                       |
| 43   | R65265100 | 1    | MICRO PORTA MAGNETICO COMPLETO                                                  | DOOR SWITCH                                                  | MICRO PORTE                                       | TUERSCHALTER                                   | MICRO PUERTA                                   |
| 44   | R65220290 | 1    | MORSETTIERA LX1(TIPO 3) NEW C/TERRA PASS.                                       | TERMINAL BOARD                                               | BORNIER                                           | KLEMMLEISTE                                    | REGLETERA                                      |
| 45   | R65040530 | 1    | MOTORE KW 055 F3 4P 3039 200-440V I                                             | MOTOR                                                        | MOTEUR                                            | MOTOR                                          | MOTOR                                          |
| 46   | R69010260 | 1    | NASELLO 1 STEP 6303-020022                                                      | DOOR LATCH 1 STEP                                            | GACHE DE PORTE POUR OUVERTURE SIMPLE              | SCHLIESSNASE 1 STUFE                           | NARIZ 1 CIERRE                                 |
| 47   | R69010270 | 1    | NASELLO 2 STEP 6303-020030                                                      | DOOR LATCH 2 STEP                                            | GACHE DE PORTE POUR OUVERTURE                     | SCHLIESSNASE 2 STUFE                           | NARIZ 2 CIERRE                                 |
| 48   | R58002670 | 1    | PERNO INF. CERNIERA REG.C/FERMI SR.2005                                         | LOWER HINGE PIN                                              | CHEVILLE CHARNIERE INFERIEURE                     | UNTERES SIE SCHARNIERSTIFT                     | PERNO INFERIOR BISAGRA                         |
| 49   | R58000370 | 1    | PERNO SUP. CERNIERA REG. N/S 2014                                               | UPPER HINGE PIN                                              | CHEVILLE CHARNIERE SUPERIEURE                     | OBERES SIE SCHARNIERSTIFT                      | PERNO SUPERIOR BISAGRA                         |
| 50   | R58003140 | 2    | PERNO AGGANCIO DEFLETTORE                                                       | FAN GUARD PANEL PIN                                          | PIVOT DEFLECTEUR                                  | BOLZEN FÜR LUFTLEITBLECH                       | PERNO CIERRE DEFLECTOR                         |
| 51   | R58003110 | 2    | PERNO FISSAGGIO DEFLETTORE                                                      | FAN GUARD PANEL PIN                                          | PIVOT DEFLECTEUR                                  | BOLZEN FÜR LUFTLEITBLECH                       | PERNO CIERRE DEFLECTOR                         |
| 52   | R65210020 | 3    | PORTAFUSIBILE BARRA DIN 5x20                                                    | FUSE CARRIER                                                 | PORTE-FUSIBLE                                     | SICHERUNGSHALTER                               | PORTAFUSIBILE                                  |
| 53   | R65210050 | 1    | PORTAFUSIBILE BARRA DIN 6,3x32                                                  | FUSE CARRIER                                                 | PORTE-FUSIBLE                                     | SICHERUNGSHALTER                               | PORTAFUSIBILE                                  |
| 54   | R65240030 | 1    | PRESSACAVO PG 107 Z/29 (RACCORDO)                                               | FAIRLEAD                                                     | PRESSE CABLE                                      | ZUGENTLASTUNG                                  | PRENSACABLES                                   |
| 55   | R65090220 | 1    | PROGRAMMAT. 1 CAMME V220/50HZ 1 CIRC.                                           | DAMPER SYSTEM                                                | SORTIE EVAPORATION MOUFLE                         | DAMPFABLASS-STELLMOTOR                         | MOTOR RESPIRADERO COMPLETO                     |
| 56   | R62090528 | 2    | RACC.A GOMITO C/COD. 10X10 PM221010E                                            | ELBOW PIPE FITTING (WITH TANG) 10 X 10                       | COURBE AVEC QUEUE 10x10                           | WINKELVERBINDUNGSTUCK 10 x10 MIT SCHAFT        | RACOR DE GOMA CON CODO 10x10                   |
| 57   | R62090478 | 4    | RACC. INTERMEDIO A GOMITO D.10 PM0310E                                          | ELBOW PIPE FITTING                                           | COURBE AVEC QUEUE                                 | STUCK MIT SCHAFT                               | RACOR CON CODO                                 |
| 58   | R62090633 | 1    | RACCORDO OTTONE CURVO 10/10 C/OGIVA                                             | ELBOW PIPE FITTING BRASS D.10                                | RACCORDEMENT A COUDE LAITON D 10                  | WINKELSTUTZEN AUS MESSING D,10                 | RACOR LATON DE GOMA D.10                       |
| 59   | R65110510 | 1    | REGOL. PORTATA ROSSO ALPHATECH. 1.5LT/H                                         | 1.5 LT/H WATER FLOW REDUCER                                  | REGULATUER DE DEBIT 1.5 LT.                       | DURCHFLUSSMONDERER 1.5L/STD.                   | REGULADOR DE CAUDAL 1.5 LT.                    |
| 60   | R65110530 | 2    | REGOL PORTATA VIOLA 2LT/1'                                                      | 2 LT/1' WATER FLOW REDUCER                                   | REGULATUER DE DEBIT 2 LT/1'                       | DURCHFLUSSMONDERER 2 LT/1'                     | REGULADOR DE CAUDAL 2 LT/1'                    |
| 61   | R65011310 | 1    | RESISTENZA CIRC.15000W 230V CAMME-VE/110                                        | CHAMBER HEATING ELEMENT 15000W 230V                          | RESISTANCE MOUFLE 15000W 230V                     | GARRAUM HEIZKOERPER 15000W 230V                | RESISTENCIA CAMARA 15000W 230V                 |
| 62   | R65020350 | 2    | RESISTENZA 7500W 230V BOILER ME/105-106                                         | STEAM GENERATOR HEATING ELEMENT 7500W                        | RESISTANCE CHAUDIERE 7500W                        | BOILER HEIZKOERPER 7500W                       | RESISTENCIA BOILER 7500W                       |
| 63   | R58004010 | 1    | ROND. FISS. VENTOLA D 30/12.5                                                   | FAN WASHER Ø 30/12.5                                         | RONDELLE TURBINE Ø 30/12.5                        | UNTERLEGSscheibe Ø 30/12.5                     | ARANDELA FIJACION TURBINA Ø 30/12.5            |
| 64   | R69180120 | 1    | SCATOLA COND.SCARICO G/MV T06-T10-T21                                           | QUENCHING-DRAIN COLLECTOR                                    | BOITE DE CONDENSATION DECHARGE                    | KONDENSATION-ABFLUSS SCHACHTEL                 | CAJÓN CONDENSACION-DESAGÜE                     |
| 65   | R65320010 | 2    | SONDA LIVELLO TL 10/B                                                           | LEVEL PROBE                                                  | SONDE DE NIVEAU                                   | WASSERSSTANDSFUEHLER                           | SONDA NIVEL                                    |
| 66   | R65320220 | 3    | SONDA "K" 6X80 1,5 ML. TESTA RASTREM. 20 mm                                     | PROBE "K" 6X80 1,5ML.                                        | SONDE "K" 6X80 1,5ML.                             | FUEHLER "K" 6X80 1,5ML.                        | SONDA "K" 6X80 1,5ML.                          |
| 67   | R65147100 | 2    | SURGE SUPPRESSOR (SNABBER) 3RT1916-1CD00                                        | SURGE SUPPRESSOR                                             | PARAFoudre                                        | ÜBERSpannungsABLEITER                          | PROTECTOR DE SOBRETENSIÓN                      |
| 68   | R65147110 | 2    | SURGE SUPPRESSOR (SNABBER) 3RT1926-1CD00                                        | SURGE SUPPRESSOR                                             | PARAFoudre                                        | ÜBERSpannungsABLEITER                          | PROTECTOR DE SOBRETENSIÓN                      |
| 69   | R69150100 | 1    | TAPPO FEMMINA G 2" PP+25%FV NERO                                                | COVER                                                        | BOUCHON                                           | ABDECKUNG                                      | TAPON                                          |
| 70   | R69150110 | 1    | TAPPO FEMMINA G 1"1/4 PP+25% FV NERO                                            | COVER                                                        | BOUCHON                                           | ABDECKUNG                                      | TAPON                                          |
| 71   | R58006690 | 1    | TAPPO SFIATO COMPLETO SERIE 2014                                                | COVER                                                        | BOUCHON                                           | ABDECKUNG                                      | TAPON                                          |
| 72   | R65140380 | 2    | TELERUTTORE 3RT1016-1AP02                                                       | CONTACTOR                                                    | CONTACTEUR                                        | SCHUETZ                                        | CONTACTOR                                      |
| 73   | R65140400 | 3    | TELERUTTORE 3RT1025-1AL20 SIEMENS                                               | CONTACTOR                                                    | CONTACTEUR                                        | SCHUETZ                                        | CONTACTOR                                      |
| 74   | R65070081 | 1    | TERMOSTATO SICUR. BOILER M/1065532522852                                        | THERMOSTAT                                                   | THERMOSTAT                                        | THERMOSTAT                                     | TERMOSTATO                                     |
| 75   | R65070350 | 1    | TERMOSTATO SICUR. 360°C -25K 55.32572.8                                         | THERMOSTAT                                                   | THERMOSTAT                                        | THERMOSTAT                                     | TERMOSTATO                                     |
| 76   | R65180430 | 2    | TRASF.RE 40VA 0-220-240/12V MOD.163.82                                          | TRANSFORMER 40VA                                             | TRANSFORMATEUR 40VA                               | TRANSFORMATOR 40VA                             | TRANSFORMADOR 40VA                             |
| 77   | R80150000 | 3    | TUBO PE 10mm x7 AZZURRO PM950612E                                               | BLUE PIPE                                                    | TUBE                                              | LEITUNG                                        | TUBO AZUL                                      |
| 78   | R65110570 | 1    | VALVOLA A SFERA MOTORIZZATA 2VIE 230V 1"                                        | STEAM GENERATOR DRAIN MOTORIZED VALVE                        | DRAINAGE CHAUDIERE                                | BOILERABLAUFVENTIL                             | VALVULA DE BOLA MOTORIZADA                     |
| 79   | R65060010 | 1    | VENTILATORE COMPATTO D.80 TP.W25 076                                            | COMPONENTS VENTILATION MOTOR D.80                            | MOTEUR DE REFROIDISSEMENT D.80                    | ABKULUNGS MOTOR D.80                           | MOTOR DE ENFRIAMIENTO D.80                     |
| 80   | R65060050 | 2    | VENTILATORE COMPATTO D.120 4715MS 23T                                           | COMPONENTS VENTILATION MOTOR D.120                           | MOTEUR DE REFROIDISSEMENT D.120                   | ABKULUNGS MOTOR D.120                          | MOTOR DE ENFRIAMIENTO D.120                    |
| 81   | R75400440 | 1    | VENTOLA D.350X114/12 50HZ P.D.                                                  | FAN                                                          | TURBINE                                           | LUEFTERRAD                                     | PALA VENTILADOR                                |
| 82   | R58004000 | 1    | VITE FISS.VENTOLA M/12X1.5 SX                                                   | FAN SCREW M12x1.5 SX                                         | VIS DE BLOCAGE TURBINE M12x1.5 SX                 | VENTILATORSCHRAUBE M12x1.5 SX                  | TORNILLO FIJACION TURBINA M12x1.5 SX           |
| 83   | R61020562 | 1    | VITE TE A2 M 6X55 UNI 5737                                                      | MOTOR SCREW TE A2 M6x55                                      | VIS DE BLOCAGE MOTEUR TE A2 M6x55                 | MOTORSCHRAUBE TE A2 M6x55                      | TORNILLO MOTOR TE A2 M6x55                     |
| 84   | R61260152 | 2    | VITE TCB+A2 M 4X10                                                              | SCREW TCB+A2 M 4X10                                          | VIS TCB+A2 M 4X10                                 | SCHRAUBE TCB+A2 M 4X10                         | TORNILLO TCB+A2 M 4X10                         |
| 85   | R62090918 | 1    | RACC. INT. A GOMITO D.10 SPEEDFIT PEM0310W DALLA SETTIMANA 28/2014 (07.07.2014) | WHITE ELBOW PIPE FITTING D.10 FROM WEEK 28/2014 (07.07.2014) | COURBE AVEC QUEUE DU SEMAINE 28/2014 (07.07.2014) | STUCK MIT SCHAFT VOM WOCH 28/2014 (07.07.2014) | RACOR CON CODO DEL SEMANA 28/2014 (07.07.2014) |
| 86   | R62090908 | 1    | RACC.INT. DIRITTO D.10 SPEEDFIT PEM0410W DALLA SETTIMANA 28/2014 (07.07.2014)   | WHITE PIPE FITTING FROM WEEK 28/2014 (07.07.2014)            | COURBE DU SEMAINE 28/2014 (07.07.2014)            | STUCK VON WOCH 28/2014 (07.07.2014)            | RACOR DEL SEMANA 28/2014 (07.07.2014)          |
| 87   | R80150060 | 1,9m | TUBO PEX-B 10MM DALLA SETTIMANA 28/2014 (07.07.2014)                            | WHITE PIPE FROM WEEK 28/2014 (07.07.2014)                    | TUBE DU SEMAINE 28/2014 (07.07.2014)              | LEITUNG VON WOCH 28/2014 (07.07.2014)          | TUBO DEL SEMANA 28/2014 (07.07.2014)           |
| 88   | R58006160 | 2    | UGELLO COND.D.0,8 CODOLO CIL.10                                                 | NOZZLE                                                       | BEC                                               | DÜSE                                           | BOQUILLA                                       |

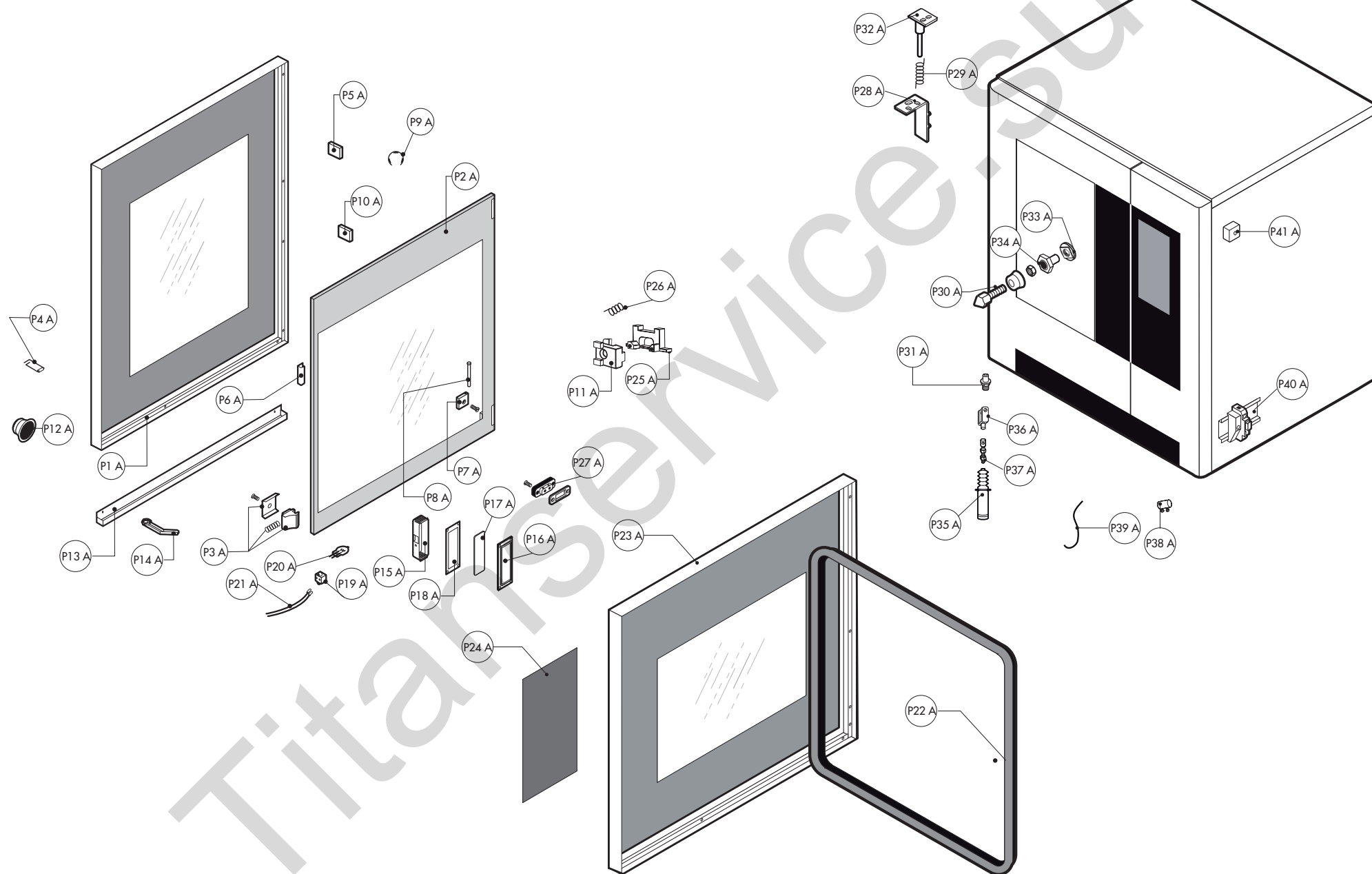
PORTA NORMALE / STANDARD DOOR / PORTE STANDARD / TÜR STANDARD / PUERTA STANDARD



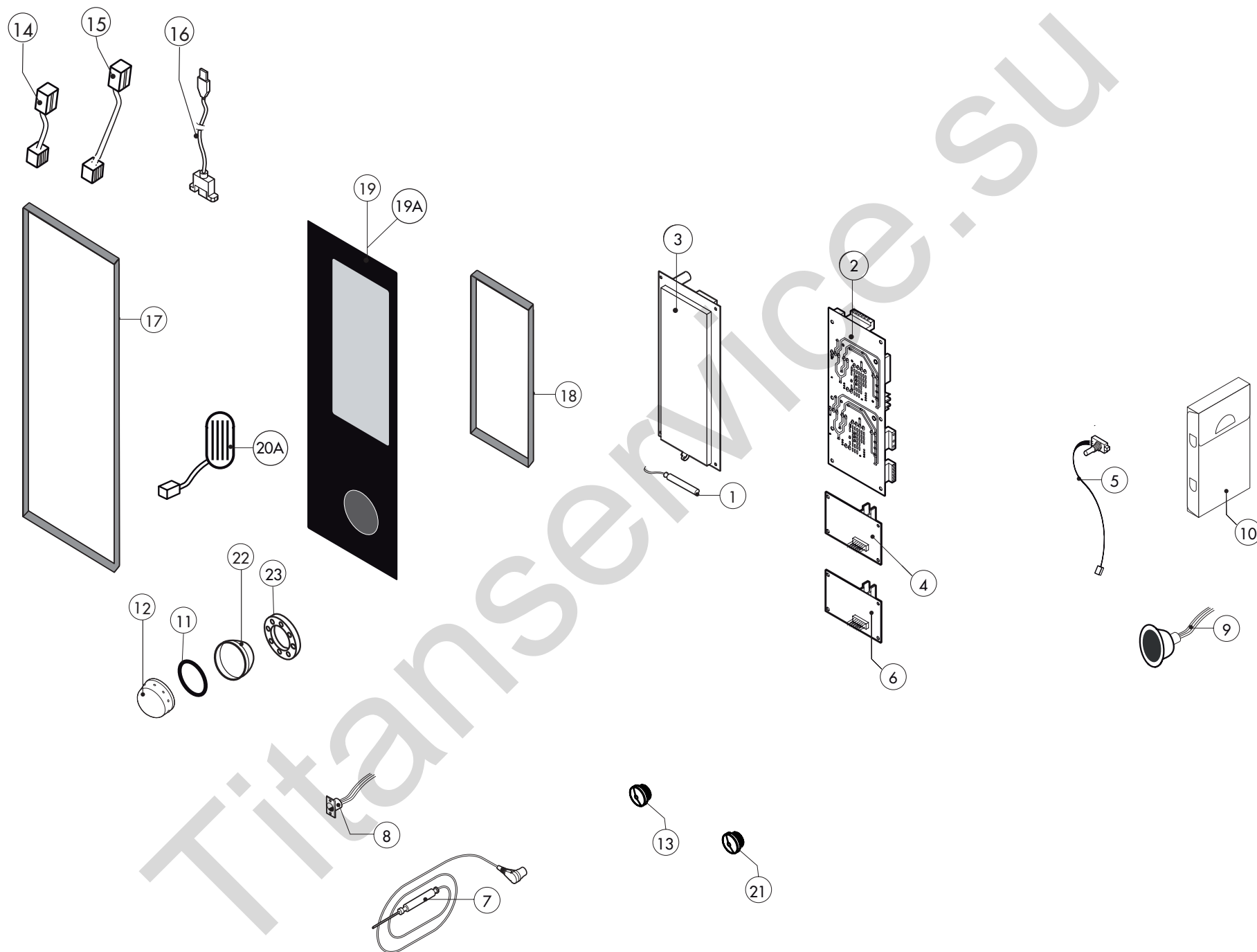
| POS.                                                                                                         | COD.      | Pz. | DESCRIZIONE                                     | DESCRIPTION              | DESCRIPTION                     | BESCHREIBUNG                    | DESCRIPCIÓN                         |
|--------------------------------------------------------------------------------------------------------------|-----------|-----|-------------------------------------------------|--------------------------|---------------------------------|---------------------------------|-------------------------------------|
| PORTA STANDARD CON MANIGLIA / STANDARD DOOR WITH HANDLE / TÜR STANDARD MIT GRIFF / PUERTA STANDARD CON MANGO |           |     |                                                 |                          |                                 |                                 |                                     |
| P1                                                                                                           | R14200660 | 1   | PORTA ESTERNA NA_101                            | EXTERNAL DOOR            | PORTE D'EXTERNAL                | AUSSENTÜR                       | PUERTA EXTERNA                      |
| P2                                                                                                           | R71202190 | 1   | VETRO POST. PORTA N/S101 2014 494x810x6         | DOOR GLASS               | VITRE PORTE                     | HARTGLASS                       | VIDRIO                              |
| P3                                                                                                           | R58001780 | 2   | FERMO VETRO PORTA P2000                         | INNER GLASS CATCH KIT    | ENSEMBLE ARRET VERRE INTERIEUR  | VERSCHLUSSSATZ F. INNENSCHIEBE  | KIT FIJACION VIDRIO INTERNO         |
| P4                                                                                                           | R61620132 | 1   | MOLLA AGGANCIO NASELLO                          | DOOR LOCK SPRING         | RESSORT DE FERMETURE PORTE      | TÜR SCHLUSSFEDER                | MUELLE DE ENGANCHE A TRINQUET       |
| P5                                                                                                           | R11420660 | 1   | PIASTRINA MONTANTE PORTA K & T 2011             | PLATE                    | PLAQUETTE                       | PLATTE                          | PLACA                               |
| P6                                                                                                           | R11423460 | 2   | PROTEZIONE VETRO PORTA K E T 2011               | GLASS PROTECTION         | PROTECTION DE VERRE             | GLASSCHUTZ                      | PROTECCION VIDRIO                   |
| P7                                                                                                           | R58001760 | 2   | CERNIERA FISSA VETRO SR2000                     | INNER GLASS SOLID HINGE  | CHARNIERE VERRE INTERIEUR       | SCHARNIER F. INNENSCHIEBE       | BISAGRA FIJA VIDRIO INTERNO         |
| P8                                                                                                           | R58001770 | 2   | PERNO CERNIERA VETRO SR2000                     | INNER GLASS HINGE PIN    | PIVOT CHARNIERE VERRE INTERIEUR | SCHARNIERBOLZEN F. INNENSCHIEBE | PERNO BISAGRA VIDRIO INTERNO        |
| P9                                                                                                           | R61600031 | 2   | ANELLO ELASTICO RADIALE D.3,2 UNI 7434          | ELASTIC RING             | ANNEAU ÉLASTIQUE                | ELASTISCHER RING                | ANILLO ELASTICO                     |
| P10                                                                                                          | R70050180 | 6   | DISTANZIALE VETRO 15x8 SIL.55SH M4x12 A2        | THICKNESS                | EPAISSEUR                       | DICKE                           | ESPESOR                             |
| P11                                                                                                          | R69010190 | 1   | GRUPPO CHIU. BASCUL. ANTRAC. 6303 N/S VERS.2014 | DOOR CATCH KIT           | ENSAMBLE FERMETURE PORTE        | VERSCHLUSSSATZ                  | MANIJA DE LA PUERTA                 |
| P12                                                                                                          | R69010630 | 1   | COP. INT. MECC. CHIU. GRUPPO 6303               | DOOR HANDLE              | POIGNEE DE PORTE                | GRIFFKORPUS                     | CUERPO MANETA                       |
| P13                                                                                                          | R69180220 | 1   | BACINELLA PORTA N/S071-101 2014                 | DRIP TRAY                | PLATEAU D'ÉGOUTTEMENT           | WASSERTROPFTASSE                | BANDEJA DEL GOTEÓ                   |
| P14                                                                                                          | R69180010 | 1   | SCARICO BACIN. PORTA DADO ALTO 2009             | DOOR DRIP TRAY DRAINAGE  | VIDANGE GOUTTIERE SOUS PORTE    | ABLAUF TÜRTROPFWANNE            | DESAGÜE BANDEJA PUERTA              |
| P15                                                                                                          | R11401440 | 2   | CALOTTA LAMPADA SR.2000                         | LAMP COVER               | CALOTTE DE PROJECTEUR           | LAMPENKALOTTE                   | CUBIERTA LAMPARA                    |
| P16                                                                                                          | R11401450 | 2   | FLANG. STAMP. VETRO LAMP. SR2000                | GLASS HOLDER LAMP FLANGE | BRIDE ARRET-VERRE ECLAIRAGE     | FLANSH F.LAMPENVERGLASUNG       | TAPA CRISTAL LAMPARA                |
| P17                                                                                                          | R71500150 | 2   | VETRO LAMPADA P2000                             | GLASS LAMP               | VERRE PROTECTION LAMPE          | LAMPLENGLAS                     | VIDRIO LAMPARA                      |
| P18                                                                                                          | R70044200 | 2   | GUARNIZIONE VETRO LAMPADA P2000                 | LAMP GASKET              | JOINT VERRE ECLAIRAGE           | LAMPENDICHTUNG                  | VIDRIO CUBRELAMPARA                 |
| P19                                                                                                          | R65270450 | 2   | PORTAL. STUCCHI ART.216                         | LIGHT SOCKET             | DOUILLE                         | LICHTKONTSCHALTER               | PORTALAMPARA PARA LAMPARA HALO-GENA |
| P20                                                                                                          | R65270020 | 2   | LAMPADA ALOGENA 20W 12V G4 49040                | LIGHT 20W 12V G4         | LAMPE 20W 12V G4                | LAMPENHALTERUNG                 | LAMPARA HALOGENA 20W 12V G4         |
| P21                                                                                                          | R66110320 | 1   | CABLAGGIO LUCI PORTA MV101-102                  | DOOR LAMPS CABLE SET     | CABLES ECLAIRAGE PORTE          | VERDRAHTUNG TURBELEUCHTUNG      | CABLEADO LUCES PUERTA               |
| P22                                                                                                          | R70048010 | 1   | TELAIO GUARNIZIONE PORTA T10 2011               | FRONT GASKET             | JOINT FACADE                    | DICHTUNG DER FRONTSEITE         | JUNTA FRONTAL                       |
| P23                                                                                                          | R14162740 | 1   | PORTA COMPLETA NA_101                           | DOOR ASSEMBLY            | PORTE COMPLETE                  | TUER KOMPLETT                   | PUERTA COMPLETA                     |
| P24                                                                                                          | R67016550 | 1   | RIVESTIMENTO PORTA C/MAN. N101-102 2014         | DOOR TRIM WITH HANDLE    | GARNITURE DE PORTE AVEC TRAITER | BEZUG TÜR MIT GRIFF             | REVESTIMIENTO PUERTA CON MANGO      |
| P25                                                                                                          | R65260752 | 1   | CONTATTO PER LUCI SR.2014 + FORNI A PAVIM.      | LAMPS CONTACT BLOCK      | CONTACT ECLAIRAGE               | LICHTKONTSCHALTER               | CONTACTO PARA LUZ                   |
|                                                                                                              |           |     |                                                 |                          |                                 |                                 |                                     |
|                                                                                                              |           |     |                                                 |                          |                                 |                                 |                                     |
|                                                                                                              |           |     |                                                 |                          |                                 |                                 |                                     |
|                                                                                                              |           |     |                                                 |                          |                                 |                                 |                                     |



PORTA AUTOMATICA /AUTOMATIC DOOR /PORTE AUTOMATIQUE / AUTOMATISCHE TÜR / PUERTA AUTOMATICA



| POS.                                                                                         | COD.       | Pz.    | DESCRIZIONE                                                    | DESCRIPTION                         | DESCRIPTION                                             | BESCHREIBUNG                           | DESCRIPCIÓN                         |
|----------------------------------------------------------------------------------------------|------------|--------|----------------------------------------------------------------|-------------------------------------|---------------------------------------------------------|----------------------------------------|-------------------------------------|
| PORTA AUTOMATICA / AUTOMATIC DOOR / PORTE AUTOMATIQUE / AUTOMATISCHE TÜR / PUERTA AUTOMATICA |            |        |                                                                |                                     |                                                         |                                        |                                     |
| P1 A                                                                                         | R14218090  | 1      | PORTA ESTERNA NA_101 APERT. AUTOMA-TICA                        | EXTERNAL DOOR                       | PORTE D'EXTERNAL                                        | AUSSENTÜR                              | PUERTA EXTERNA                      |
| P2 A                                                                                         | R71202190  | 1      | VETRO POST. PORTA N/S101 2014 494x810x6                        | DOOR GLASS                          | VITRE PORTE                                             | HARTGLASS                              | VIDRIO                              |
| P3 A                                                                                         | R58001780  | 2      | FERMO VETRO PORTA P2000                                        | INNER GLASS CATCH KIT               | ENSEMBLE ARRET VERRE INTERIEUR                          | VERSCHLUSSSATZ F. INNENSCHIEBE         | KIT FIJACION VIDRIO INTERNO         |
| P4 A                                                                                         | R61620132  | 1      | MOLLA AGGANCIO NASELLO                                         | DOOR LOCK SPRING                    | RESSORT DE FERMETURE PORTE                              | TÜR SCHLUSSFEDER                       | MUELLE DE ENGANCHE A TRINQUET       |
| P5 A                                                                                         | R11420660  | 1      | PIASTRINA MONTANTE PORTA K & T 2011                            | PLATE                               | PLAQUETTE                                               | PLATTE                                 | PLACA                               |
| P6 A                                                                                         | R11423460  | 2      | PROTEZIONE VETRO PORTA K E T 2011                              | GLASS PROTECTION                    | PROTECTION DE VERRE                                     | GLASSCHUTZ                             | PROTECCION VIDRIO                   |
| P7 A                                                                                         | R58001760  | 2      | CERNIERA FISSA VETRO SR2000                                    | INNER GLASS SOLID HINGE             | CHARNIERE VERRE INTERIEUR                               | SCHARNIER F. INNENSCHIEBE              | BISAGRA FIJA VIDRIO INTERNO         |
| P8 A                                                                                         | R58001770  | 2      | PERNO CERNIERA VETRO SR2000                                    | INNER GLASS HINGE PIN               | PIVOT CHARNIERE VERRE INTERIEUR                         | SCHARNIERBOLZEN F. INNENSCHIEBE        | PERNO BISAGRA VIDRIO INTERNO        |
| P9 A                                                                                         | R61600031  | 2      | ANELLO ELASTICO RADIALE D.3,2 UNI 7434                         | ELASTIC RING                        | ANNEAU ÉLASTIQUE                                        | ELASTISCHER RING                       | ANILLO ELASTICO                     |
| P10 A                                                                                        | R70050180  | 6      | DISTANZIALE VETRO 15x8 SIL.55SH M4x12 A2                       | THICKNESS                           | EPAISSEUR                                               | DICKE                                  | ESPESOR                             |
| P11 A                                                                                        | R58007220  | 1      | FERMO MOLLA AGG. NASELLO 6303 PORTA AUT.                       | SPRING RETAINER                     | RESSORT DE RETENUE                                      | FEDERHALTER                            | RETENEDOR DE RESORTE                |
| P12 A                                                                                        | R14218140  | 1      | ASS.COPERTURA MECCANISMO CHIUS. AUT.                           | COVERING                            | COUVERTURE                                              | BEZUG                                  | COBERTURA                           |
| P13 A                                                                                        | R69180220  | 1      | BACINELLA PORTA N/S071-101 2014                                | DRIP TRAY                           | PLATEAU D'ÉGOUTTÈMENT                                   | WASSERTROPFTASSE                       | BANDEJA DEL GOTEÓ                   |
| P14 A                                                                                        | R69180010  | 1      | SCARICO BACIN. PORTA DADO ALTO 2009                            | DOOR DRIP TRAY DRAINAGE             | VIDANGE GOUTTIÈRE SOUS PORTE                            | ABLAUF TÜRTROPFWANNE                   | DESAGÜE BANDEJA PUERTA              |
| P15 A                                                                                        | R11401440  | 2      | CALOTTA LAMPADA SR.2000                                        | LAMP COVER                          | CALOTTE DE PROJECTEUR                                   | LAMPENKALOTTE                          | CUBIERTA LAMPARA                    |
| P16 A                                                                                        | R11401450  | 2      | FLANG.STAMP.VETRO LAMP. SR2000                                 | GLASS HOLDER LAMP FLANGE            | BRIDE ARRET-VERRE ECLAIRAGE                             | FLANSH F.LAMPENVERGLASUNG              | TAPA CRISTAL LAMPARA                |
| P17 A                                                                                        | R71500150  | 2      | VETRO LAMPADA P2000                                            | GLASS LAMP                          | VERRE PROTECTION LAMPE                                  | LAMPEGLAS                              | VIDRIO LAMPARA                      |
| P18 A                                                                                        | R70044200  | 2      | GUARNIZIONE VETRO LAMPADA P2000                                | LAMP GASKET                         | JOINT VERRE ECLAIRAGE                                   | LAMPENDICHTUNG                         | VIDRIO CUBRELAMPARA                 |
| P19 A                                                                                        | R65270450  | 2      | PORTAL. STUCCHI ART.216                                        | LIGHT SOCKET                        | DOUILLE                                                 | LICHTKONTSCHALTER                      | PORTALAMPARA PARA LAMPARA HALO-GENA |
| P20 A                                                                                        | R65270020  | 2      | LAMPADA ALOGENA 20W 12V G4 49040                               | LIGHT 20W 12V G4                    | LAMPE 20W 12V G4                                        | LAMPENHALTERUNG                        | LAMPARA HALOGENA 20W 12V G4         |
| P21 A                                                                                        | R66110320  | 1      | CABLAGGIO LUCI PORTA MV101-102                                 | DOOR LAMPS CABLE SET                | CABLES ECLAIRAGE PORTE                                  | VERDRAHTUNG TURBELEUCHTUNG             | CABLEADO LUCES PUERTA               |
| P22 A                                                                                        | R70048010  | 1      | TELAIO GUARNIZIONE PORTA T10 2011                              | FRONT GASKET                        | JOINT FACADE                                            | DICHTUNG DER FRONTSEITE                | JUNTA FRONTAL                       |
| P23 A                                                                                        | R14162750  | 1      | PORTA AUTOMATICA COMPLETA NA_101                               | DOOR ASSEMBLY                       | PORTE COMPLETE                                          | TUER KOMPLETT                          | PUERTA COMPLETA                     |
| P24 A                                                                                        | R67016730  | 1      | RIVESTIMENTO PORTA S/MAN. N101-102 2014                        | DOOR TRIM WITHOUT HANDLE            | GARNITURE DE PORTE                                      | BEZUG TÜR OHNE GRIFF                   | REVESTIMIENTO PUERTA                |
| P25 A                                                                                        | R58007170  | 1      | SUPP. MOLLA 6303 PER SGANCIO C/LEVA                            | SPRING HOLDER                       | RESSORT SUPPORT                                         | HALTERUNG FÜR FEDER                    | SOPORTE PARA RESORTE                |
| P26 A                                                                                        | R61620152  | 1      | MOLLA AGG. NASELLO CORTA 6303.0051A                            | DOOR LOCK SPRING                    | RESSORT DE FERMETURE PORTE                              | TÜR SCHLUSSFEDER                       | MULLE DE ENGANCHE A TRINQUET        |
| P27 A                                                                                        | R65260752  | 1      | CONTATTO PER LUCI SR.2014 + FORNI A PAVIM.                     | LAMPS CONTACT BLOCK                 | CONTACT ECLAIRAGE                                       | LICHTKONTSCHALTER                      | CONTACTO PARA LUZ                   |
| P28 A                                                                                        | R14402400  | 1      | CERNIERA SUP.PORTA C/APERT.AUT. N/S 2014                       | UPPER DOOR HINGE                    | CHARNIERE SUPERIEURE PORTE                              | OBERES SCHARNIER                       | BISAGRA SUPERIOR                    |
| P29 A                                                                                        | BN1412083  | 1      | MOLLA DX PORTE CIECHE ARMADI                                   | SPRING DX                           | RESSORT DX                                              | TÜR FEDER                              | MUELLE DX                           |
| P30 A                                                                                        | R69010850  | 1      | NASELLO 1 STEP 6303 FIL.MA 8 L=28,5                            | DOOR LATCH 1 STEP                   | GACHE DE PORTE POUR OUVERTURE SIMPLE                    | SCHLIESSNASE 1 STUFE                   | NARIZ 1 CIERRE                      |
| P30 A                                                                                        | R69010860  | 1      | NASELLO 1 STEP 6303 FIL.MA 8 SX L=28,5 DALLA SETTIMANA 24/2014 | DOOR LATCH 1 STEP FROM WEEK 24/2014 | GACHE DE PORTE POUR OUVERTURE SIMPLE DU SEMAINE 24/2014 | SCHLIESSNASE 1 STUFE VOM WOCHE 24/2014 | NARIZ 1 CIERRE DEL SEMANA 24/2014   |
| P31 A                                                                                        | R58007180  | 1      | PERNO INF.CERNIERA REG.C/FERMI APER.AUT.                       | LOWER HINGE PIN AUTOMATIC DOOR      | CHEVILLE CHARNIERE INFÉRIEURE                           | UNTERES SIE SCHARNIERSTIFT             | PERNO INFERIOR BISAGRA              |
| P32 A                                                                                        | R14218130  | 1      | ASS. PERNO PER APERTURA AUTOMATICA                             | HINGE PIN AUTOMATIC DOOR            | CHEVILLE CHARNIERE PORTE AUTOMATIQUE                    | SIE SCHARNIERSTIFT AUTOMATISCHE TÜRE   | PERNO BISAGRA PUERTA AUTOMATICA     |
| P33 A                                                                                        | R58007190  | 1      | BOCCOLA INTERNA SGANCIO AUT. C/LEVA                            | INTERNAL BUSH                       | DOUILLE                                                 | BUSCH                                  | CASQUILLO                           |
| P34 A                                                                                        | R58007200  | 1      | BOCCOLA ESTERNA SGANCIO AUT. C/LEVA                            | EXTERNAL BUSH                       | DOUILLE                                                 | BUSCH                                  | CASQUILLO                           |
| P35 A                                                                                        | R65090310  | 1      | ATTUATORE LINEARE D40AM2 (220VCC)                              | LINEAR ACTUATOR                     | ACTIONNEUR LINÉAIRE                                     | LINEARANTRIEB                          | ACTUADOR LINEAL                     |
| P36 A                                                                                        | R61660110  | 1      | FORCELLA CLE6                                                  | FORK                                | FOURCHE                                                 | GABEL                                  | TENEDOR                             |
| P37 A                                                                                        | R61660120  | 1      | SNODO ASSIALE SM6                                              | AXIAL JOINT                         | JOINT AXIAL                                             | AXIALGELENK                            | ARTICULACIÓN AXIAL                  |
| P38 A                                                                                        | R61660130  | 2      | MORSETTO A BARILOTTO                                           | CLIP                                | PINCE                                                   | KLEMME                                 | ABRAZADERA                          |
| P39 A                                                                                        | R85340022B | 0,86 m | CAVO DI ACCIAIO INOX                                           | STEEL CABLE                         | CÂBLE EN ACIER                                          | STAHLSEIL                              | CABLE DE ACERO                      |
| P40 A                                                                                        | R65210020  | 1      | PORTAFUSIBILE BARRA DIN 5x20                                   | FUSE CARRIER                        | PORTE-FUSIBLE                                           | SICHERUNGSHALTER                       | PORTAFUSIBLE                        |
| P41 A                                                                                        | R65301760  | 1      | PONTE A DIODI KBPC2510 25A 1000V FASTON                        | DIODE BRIDGE 25A 1000V              | PONT DE DIODES 25A 1000V                                | DIODENBRÜCKE 25A 1000V                 | PUENTE DE DIODOS 25A 1000V          |

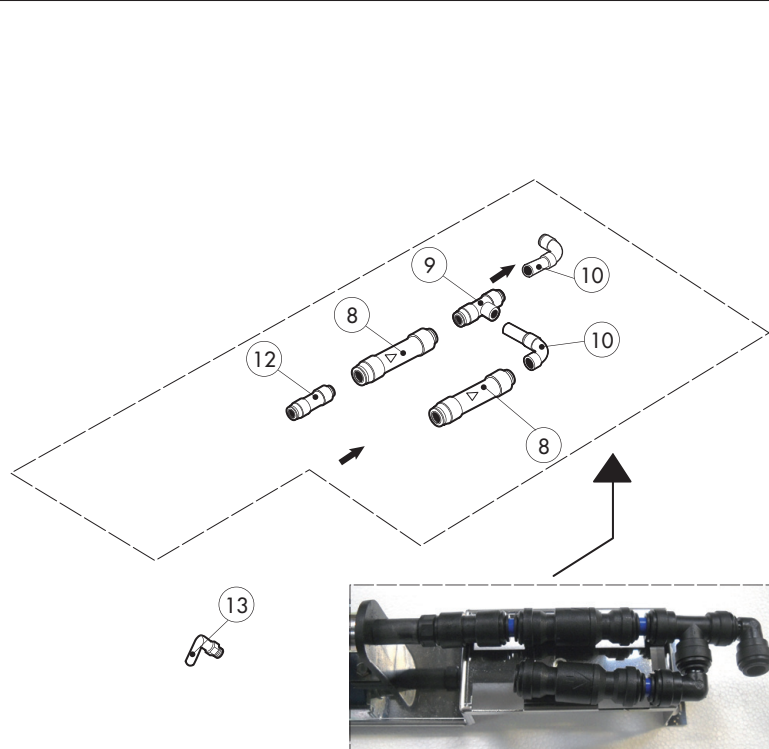




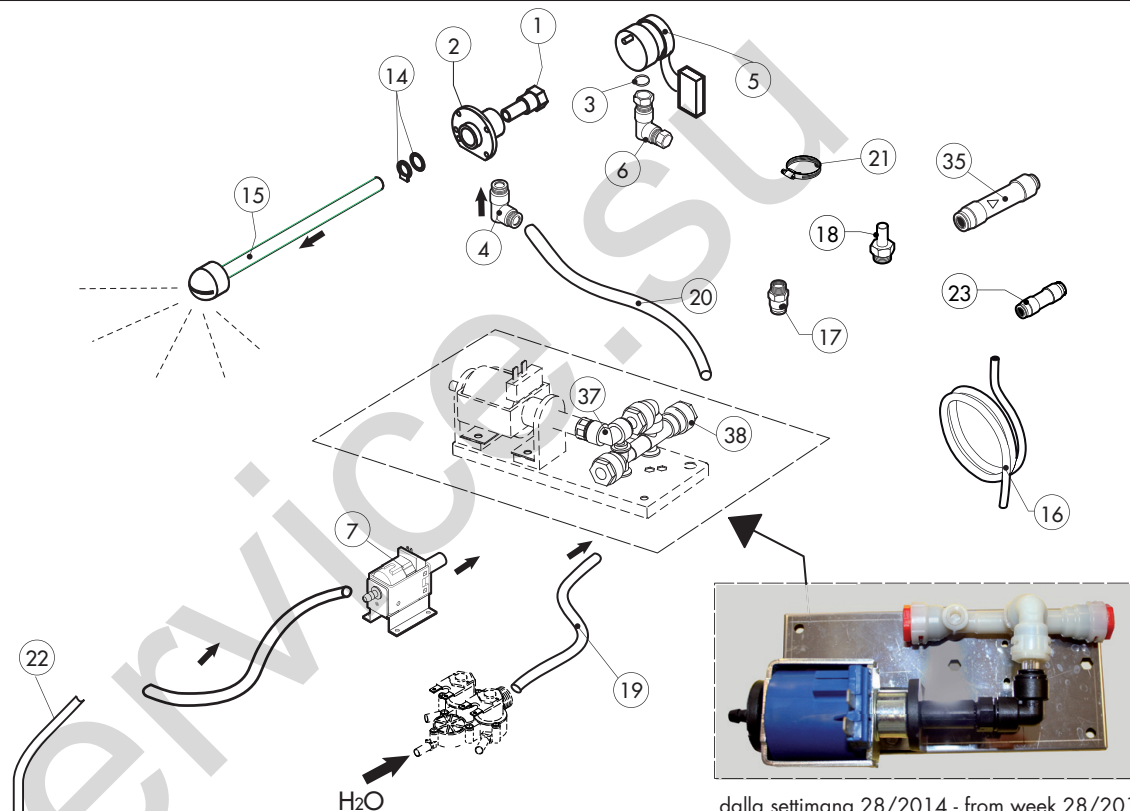
**ATTENTION:** POUR COMMANDER DES PIÈCES, MERCI DE SPECIFIER TOUJOURS LE MODÈLE DU FOUR ET LE NUMÉRO DE SÉRIE  
**ACHTUNG:** UM ERSATZTEILE ZU BESTELLEN, BITTE IMMER OFEN-MODELL UND SERIENNUMMER GEBEN.

ed.0614

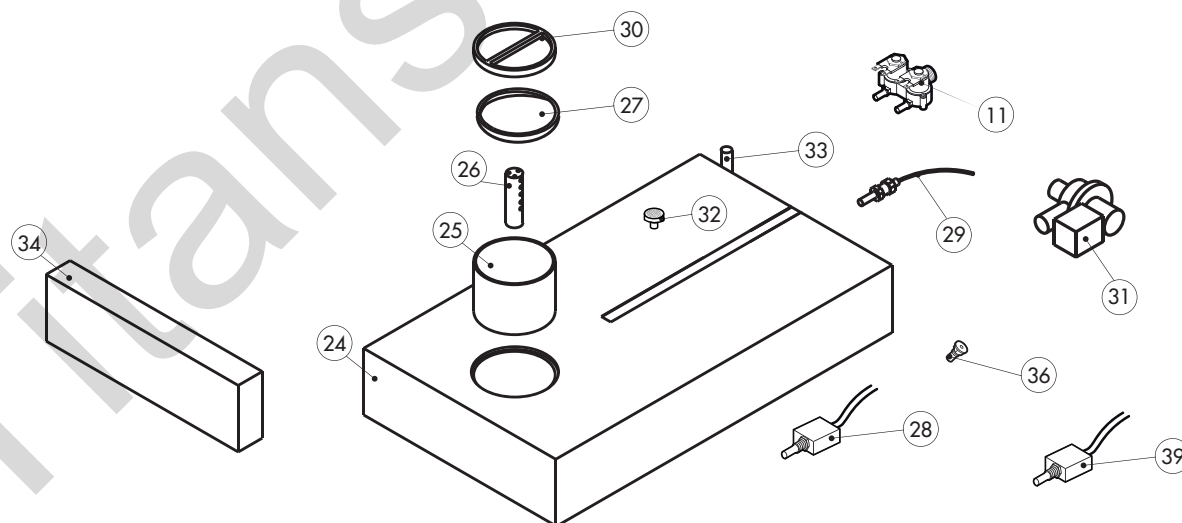
[illegible]



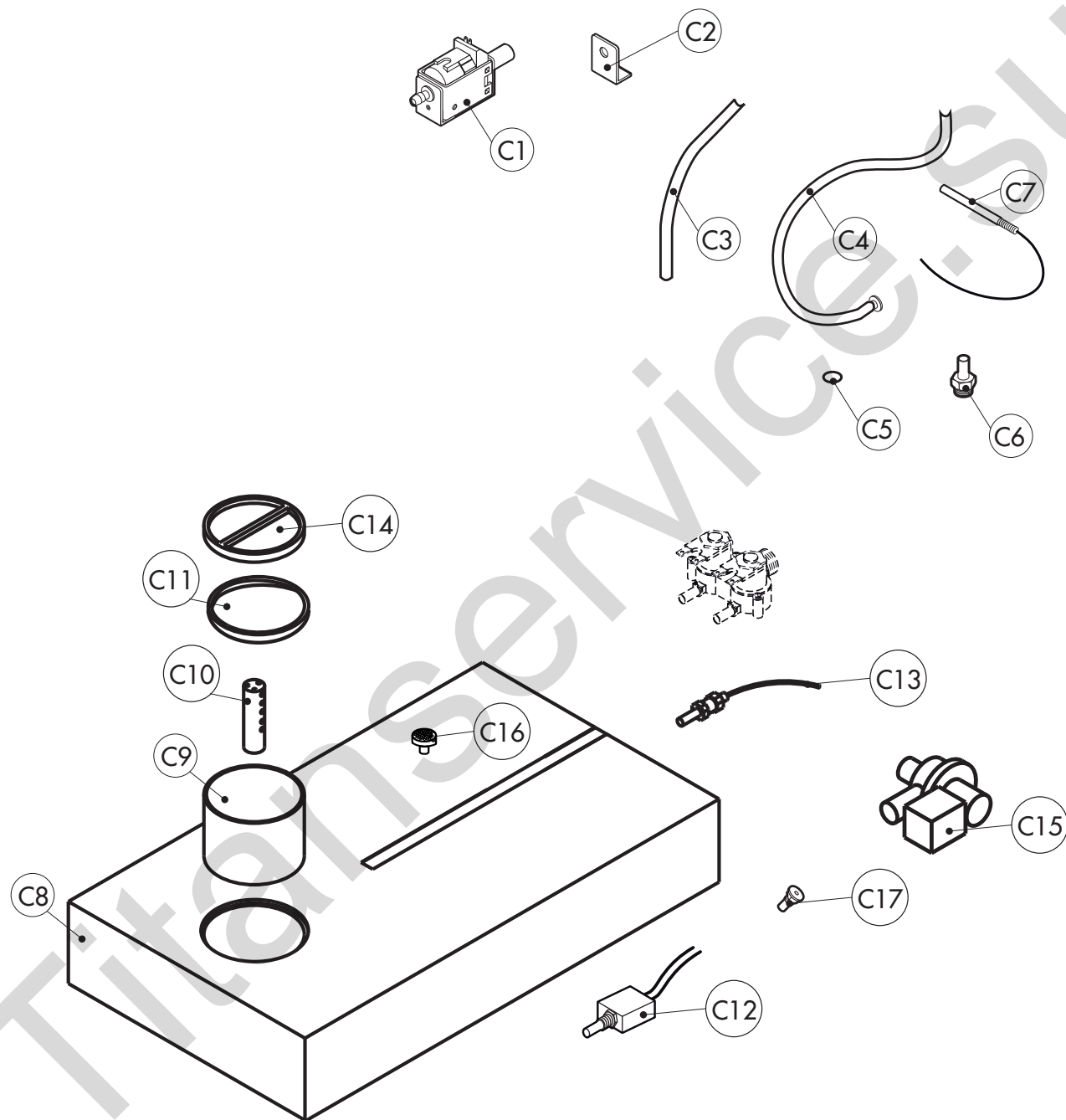
fino alla settimana 27/2014 - until week 27/2014  
 élimine du semaine 27/2014  
 bis woche 27/2014 - eliminato del semana 27/2014



dalla settimana 28/2014 - from week 28/2014  
 du semaine 28/2014 - vom woche 28/2014  
 del semana 28/2014



| POS. | COD.       | Pz. | DESCRIZIONE                                                                                 | DESCRIPTION                                                          | DESCRIPTION                                                            | BESCHREIBUNG                                                           | DESCRIPCIÓN                                                              |
|------|------------|-----|---------------------------------------------------------------------------------------------|----------------------------------------------------------------------|------------------------------------------------------------------------|------------------------------------------------------------------------|--------------------------------------------------------------------------|
| 1    | R58007000  | 1   | PERNO ROTANTE LAVAGGIO MOB                                                                  | ROTATING PIVOT                                                       | PIVOT TOURNANT                                                         | UMLAUFENDE STÜTZE                                                      | GOZNE ROTATORIO                                                          |
| 2    | R58007020  | 1   | FLANGIA LAVAGGIO MOB                                                                        | WASHING SYSTEM FLANGE                                                | BRIDE BRAS DE LAVAGE                                                   | FLANSCH WASCHARMBEFESTIGUNG                                            | PLATINA LAVADO                                                           |
| 3    | R70010080  | 1   | GUARNIZIONE OR 1.4x2 Viton DIN 981                                                          | GASKETS                                                              | JOINT                                                                  | RINGDICHTUNG                                                           | JUNTA                                                                    |
| 4    | R62090663  | 1   | RACCORDO OTTONE NICH.A L C/OGIVA 10x1/4"                                                    | ELBOW PIPE FITTING BRASS D.10x1/4"                                   | RACCORDEMENT A COUDE LAITON D 10x1/4"                                  | ELBOW PIPE FITTING BRASS D.10x1/4"                                     | RACOR LATON DE GOMA D.10x1/4"                                            |
| 5    | R65090260  | 1   | MOTORID.LAV. METEOR (58U59DB4A1-00)                                                         | WASHING GEARED MOTORS                                                | MOTO-REDUCTEURS DE LAVAGE                                              | GETRIEBEMOTOREN                                                        | MOTORREDUCTORES LAVADO                                                   |
| 6    | R62090633  | 1   | RACCORDO OTTONE CURVO 10/10 C/OGIVA                                                         | ELBOW PIPE FITTING BRASS D.10                                        | RACCORDEMENT A COUDE LAITON D 10                                       | WINKELSTUTZEN AUS MESSING D,10                                         | RACOR LATON DE GOMA D.10                                                 |
| 7    | R65110600  | 1   | POMPA ELETTROM.A PIS.OSC.ET508LAB 2273                                                      | POMPE DETERGEANT                                                     | DETRGENT PUMP                                                          | REINIGERPUMPE                                                          | BOMBA DETERGENTE                                                         |
| 8    | R65110680  | 2   | VALVOLA ANTIRITORNO J.G. 10SCV eliminato dalla settimana 27/2014 (4/7/2014)                 | ANTI-BACK FLOW UNTIL WEEK 27/2014 (4/7/2014)                         | ANTIRETOUR ÉLIMINÉ DU SEMAINE 27/2014 (4/7/2014)                       | RUCKFLUSSVERHINDERER BIS WOCHÉ 27/2014 (4/7/2014)                      | ANTIRETORNO ELIMINATO DEL SEMANA 27/2014 (04/07/2017)                    |
| 9    | R62090468  | 1   | RACCORDO INTERMEDIO A "T" D.10 PM0210E eliminato dalla settimana 27/2014 (4/7/2014)         | T MIDDLE PIPE FITTING D.10 UNTIL WEEK 27/2014 (4/7/2014)             | RACCORD INTERMEDIAIRE A "T" D.10 ÉLIMINÉ DU SEMAINE 27/2014 (4/7/2014) | MITTELVERBINDUNGSSTÜCK D.10 "T"- FORMIG BIS WOCHÉ 27/2014 (4/7/2014)   | RACOR INTERMEDIO TIPO "T" D.10 ELIMINATO DEL SEMANA 27/2014 (04/07/2017) |
| 10   | R62090528  | 2   | RACC.A GOMITO C/COD. 10X10 PM221010E eliminato dalla settimana 27/2014 (4/7/2014)           | ELBOW PIPE FITTING (WITH TANG) 10 X 10 UNTIL WEEK 27/2014 (4/7/2014) | COURBE AVEC QUEUE 10x10 ÉLIMINÉ DU SEMAINE 27/2014 (4/7/2014)          | WINKELVERBINDUNGSSTÜCK 10 X 10 MIT SCHAFT BIS WOCHÉ 27/2014 (4/7/2014) | RACOR DE GOMA CON CODO 10x10 ELIMINATO DEL SEMANA 27/2014 (04/07/2017)   |
| 11   | R65110210  | 1   | E.V. 2 VIE 220V 50HZ X J.G. CON ATTACC                                                      | SOLENOID VALVE 2 VIE 220V 50HZ                                       | ELECTROVANNE 2 VIE 220V 50HZ                                           | MAGNETVENTIL 2 VIE 220V 50HZ                                           | ELECTROVALVULA 2 VIE 220V 50HZ                                           |
| 12   | R62090618  | 1   | RIDUZIONE INTERMEDIA 10-8 PM201008E eliminato dalla settimana 27/2014 (4/7/2014)            | REDUCTION PIPE FITTING UNTIL WEEK 27/2014 (4/7/2014)                 | RACCORD DROIT REDUCTION ÉLIMINÉ DU SEMAINE 27/2014 (4/7/2014)          | GERADE ANSCHLUSS-VERKLEINERUNG BIS WOCHÉ 27/2014 (4/7/2014)            | RACOR DERECHO REDUCCION ELIMINATO DEL SEMANA 27/2014 (04/07/2017)        |
| 13   | R62090678  | 1   | RACC.A GOMITO C/CODOLO 8x8 PM220808E eliminato dalla settimana 27/2014 (4/7/2014)           | ELBOW PIPE FITTING (WITH TANG) 8x8 UNTIL WEEK 27/2014 (4/7/2014)     | COURBE AVEC QUEUE 8x8 ÉLIMINÉ DU SEMAINE 27/2014 (4/7/2014)            | WINKELVERBINDUNGSSTÜCK 8x8 MIT SCHAFT BIS WOCHÉ 27/2014 (4/7/2014)     | RACOR DE GOMA CON CODO 8x8 ELIMINATO DEL SEMANA 27/2014 (04/07/2017)     |
| 14   | R70045120  | 1   | KIT GUARNIZIONI X LAVAGGIO MOB                                                              | GASKETS KIT                                                          | ENSEMBLE JOINTS                                                        | DICHTUNGSSATZ                                                          | KIT JUNTAS                                                               |
| 15   | R58007030  | 1   | TESTA LAVAGGIO MOB+ALBERO L=165                                                             | WASHING SYSTEM INNER ASSEMBLY                                        | ENSEMBLE INTERIEUR DU LAVAGE                                           | INNEN WASCHARMBEFESTIGUNG                                              | KIT INTERNO LAVADO                                                       |
| 16   | R70070080  | 1m  | TUBO CARICO ACQUA D.23mm x13                                                                | PIPE                                                                 | TUBE                                                                   | LEITUNG                                                                | TUBO                                                                     |
| 17   | R62090508  | 1   | RACC.TERMIN.DIR.FIL.CON.10X1/4 PM011002E                                                    | STRAIGHT THREADED TERMINAL PIPE FITTING                              | RACCORDEMENT                                                           | ENDVERBINDUNGSSTÜCK GESCHNITTEN                                        | RACOR                                                                    |
| 18   | R62090518  | 1   | RACC.TERMIN.C/COD.F.CON.10X1/4 PM051002E                                                    | TERMINAL PIPE FITTING (WITH TANG)                                    | RACCORD AVEC QUEUE                                                     | ENDVERBINDUNGSSTÜCK MIT SCHAFT                                         | RACOR TERMINAL CON CODO                                                  |
| 19   | R80120060  | 1m  | TUBO SILIC. TRASP.SR60/TR 7/12.                                                             | PIPE                                                                 | TUBE                                                                   | LEITUNG                                                                | TUBO                                                                     |
| 20   | R80150000  | 1m  | TUBO PE D.10mm x7 AZZURRO                                                                   | PE D.10mm x7 WATER FLEXIBLE PIPE                                     | TUBE FLEXIBLE EAU D. 10x7                                              | WASSERFLEXROHRLEITUNG PE D.10mm x7                                     | TUBO FLEXIBLE AGUA PE D.10mm x7                                          |
| 21   | R61630121  | 4   | FASCETTE ZINC.BIFILARE A MOLLA D.13,7mm                                                     | METAL CLAMPS                                                         | COLLIER DE SERRAGE                                                     | VERZINKTE SCHELEN                                                      | ABRAZADERA                                                               |
| 22   | R80150020  | 2m  | TUBO PU 8mm x6 TRASPARENTE                                                                  | PE D.8mm x6 DETERGENT FLEXIBLE PIPE                                  | TUBE DETERGEANT D. 8x6                                                 | ROHRLEITUNG F. REINIGER PE D.8mm x6                                    | TUBO DETERGENTE PE D.8mm x6                                              |
| 23   | R62090878  | 2   | RACCORDO INTERMEDIO DIRITTO D.8 PM0408E                                                     | PIPE FITTING                                                         | COURBE                                                                 | STÜCK                                                                  | RACOR                                                                    |
| 24   | R14162580  | 1   | CASSETTO DETERGENTE COMPLETO                                                                | DETERGENT DRAWER                                                     | TIROIR DÉTERGENT                                                       | SCHUBFACH REINIGUNGSMITTEL                                             | CAJÓN DETERGENTE                                                         |
| 25   | R69040060  | 1   | FILTRO CASSETTO MISCELAZIONE N/S 2014                                                       | SUPPRESSOR DRAWER                                                    | FILTRE TIROIR                                                          | FILTER FACH                                                            | FILTRO CAJÓN                                                             |
| 26   | R69040050  | 1   | SPRUZZATORE CASSET. MISCELAZIONE N/S 2014                                                   | SPRAY                                                                | PULVÉRISER                                                             | SPRAY                                                                  | ROCIAR                                                                   |
| 27   | R69040020  | 1   | GHIERA D.90 CASS.MISCEL.DET. N/S 2014                                                       | FERRULE D.90                                                         | VIROLE D.90                                                            | ZWINGE D.90                                                            | CONTERA D.90                                                             |
| 28   | R65260900  | 1   | MICRO CASSETTO MISCELAZIONE N/S 2014 DALLA SETTIMANA 26/2014 (23/06/2014)                   | DRAWER MICRO FROM WEEK 26/2014 (23/06/2014)                          | MICRO TIROIR DU SEMAINE 26/2014 (23/06/2014)                           | FACH-MICRO VOM WOCHÉ 26/2014 (23/06/2014)                              | MICRO CAJÓN DEL SEMANA 26/2014 (23/06/2014)                              |
| 29   | R65260910  | 1   | CONTROLLO LIVELLO CASS. MISCEL. N/S 2014                                                    | LEVEL CONTROLLER DRAWER                                              | CONTROLES DE NIVEAU TIROIR                                             | KONTROLL FACH                                                          | CONTROLLOR DE NIVEL CAJÓN                                                |
| 30   | R69040040  | 1   | TAPPO D.90 CASS.MISCEL.DET. N/S 2014                                                        | COVER                                                                | BOUCHON                                                                | ABDECKUNG                                                              | TAPON                                                                    |
| 31   | R65110300  | 1   | POMPA SINCRONA 220V 50HZ 30W                                                                | POMPE                                                                | PUMP                                                                   | PUMPE                                                                  | POMPA                                                                    |
| 32   | R62090718  | 1   | FILTRINO D.5 SFIL00VT00                                                                     | SUPPRESSOR                                                           | FILTRE                                                                 | FILTER                                                                 | FILTRO                                                                   |
| 33   | R58006960  | 1   | PERNO ø9 DIVIS.CASSETTI N/S 071-101 2014                                                    | PIN                                                                  | PIVOT                                                                  | BOLZEN                                                                 | PERNO                                                                    |
| 34   | R69040070  | 1   | FINTO CASSETTO TELAIO N/S 2014                                                              | FAKE DRAWER FRAME                                                    | CADRE DE TIROIR FAUX                                                   | FAKE EINSCHUBRAHMEN                                                    | MARCO DE EL CAJÓN FALSO                                                  |
| 35   | R65110690  | 1   | RACCORDO 3/4F+JG10 C/ANTIRIT. E2120202                                                      | PIPE FITTING                                                         | COURBE                                                                 | STÜCK                                                                  | RACOR                                                                    |
| 36   | R58006951  | 1   | PERNO MICRO L=26 C/SEDE MOLLA CAS. DET. N/S DALLA SETTIMANA 26/2014 (23/06/2014)            | PIN FROM WEEK 26/2014 (23/06/2014)                                   | PIVOT DU SEIMAINÉ 26/2014 (23/06/2014)                                 | BOLZEN VOM WOCHÉ 26/2014 (23/06/2014)                                  | PERNO DEL SEMANA 26/2014 (23/06/2014)                                    |
| 37   | R62090498  | 1   | RACC.INTERMEDIO A GOMITO D.8 PM0308E DALLA SETTIMANA 28/2014 (07/07/2014)                   | ELBOW PIPE FITTING FROM WEEK 28/2014 (07/07/2014)                    | COURBE AVEC QUEUE DU SEMAINE 28/2014 (07/07/2014)                      | WINKELVERBINDUNGSSTÜCK VOM WOCHÉ 28/2014 (07/07/2014)                  | RACOR DE GOMA DEL SEMANA 28/2014 (07/07/2014)                            |
| 38   | R62090888  | 1   | COLLET.RES.ACET. 3VIE- 2D.10+1D.8 + 2ANTIRIT DALLA SETTIMANA 28/2014 (07/07/2014)           | MANIFOLD FROM WEEK 28/2014 (07/07/2014)                              | COLLECTEUR DU SEMAINE 28/2014 (07/07/2014)                             | KRÜMMER VOM WOCHÉ 28/2014 (07/07/2014)                                 | COLECTOR DEL SEMANA 28/2014 (07/07/2014)                                 |
| 39   | R65260900K | 1   | KIT MICROINT. CASSETTO MISCELAZIONE N/S 2014 eliminato dalla settimana 25/2014 (20/06/2014) | KIT DRAWER MICRO UNTIL WEEK 25/2014 (20/06/2014)                     | KIT MICRO TIROIR ÉLIMINE DU SEMAINE 25/2014 (20/06/2014)               | KIT FACH-MICRO BIS WOCHÉ 25/2014 (20/06/2014)                          | KIT MICRO CAJÓN ELIMINATO DEL SEMANA 25/2014 (20/06/2014)                |



**ATTENTION:** POUR COMMANDER DES PIÈCES, MERCI DE SPECIFIER TOUJOURS LE MODÈLE DU FOUR ET LE NUMÉRO DE SÉRIE  
**ACHTUNG:** UM ERSATZTEILE ZU BESTELLEN, BITTE IMMER OFEN-MODELL UND SERIENNUMMER GEBEN.

ed.0614

[illegible]