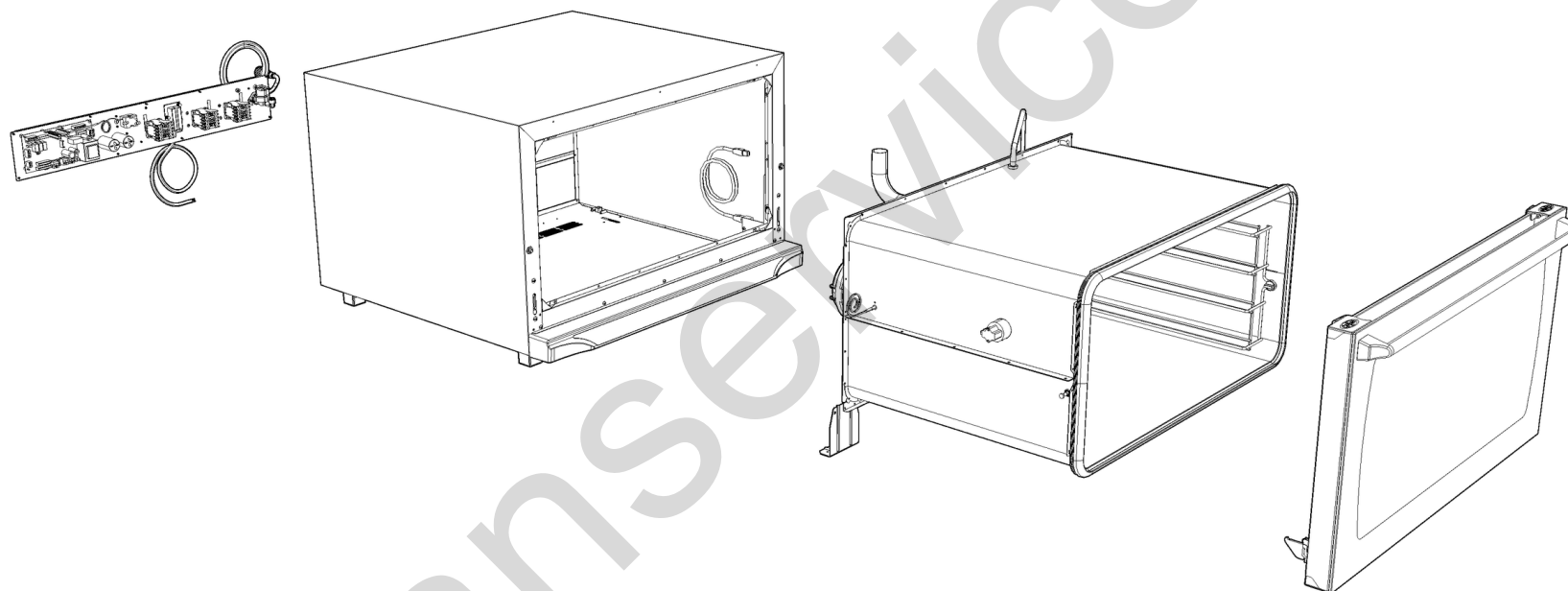
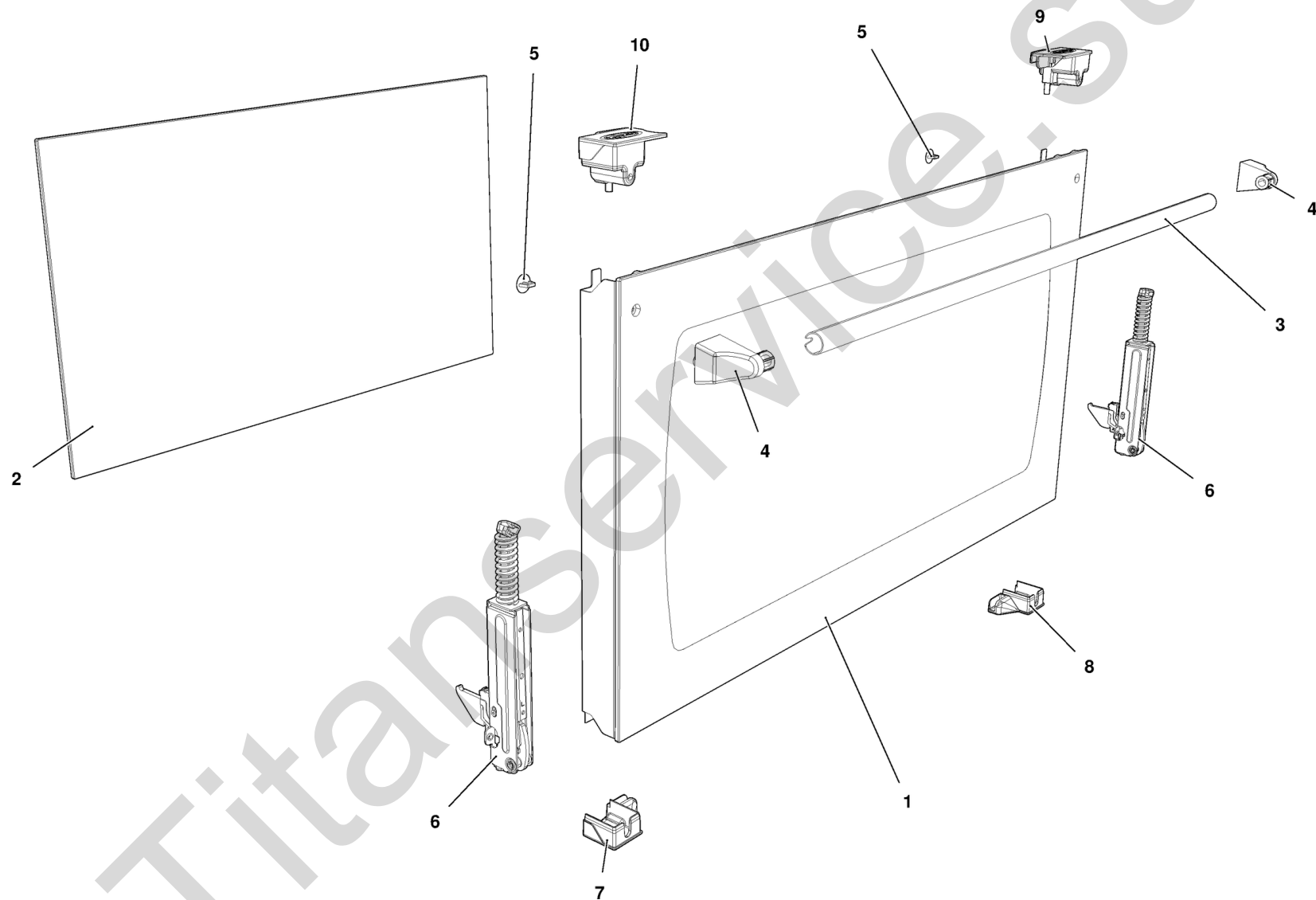


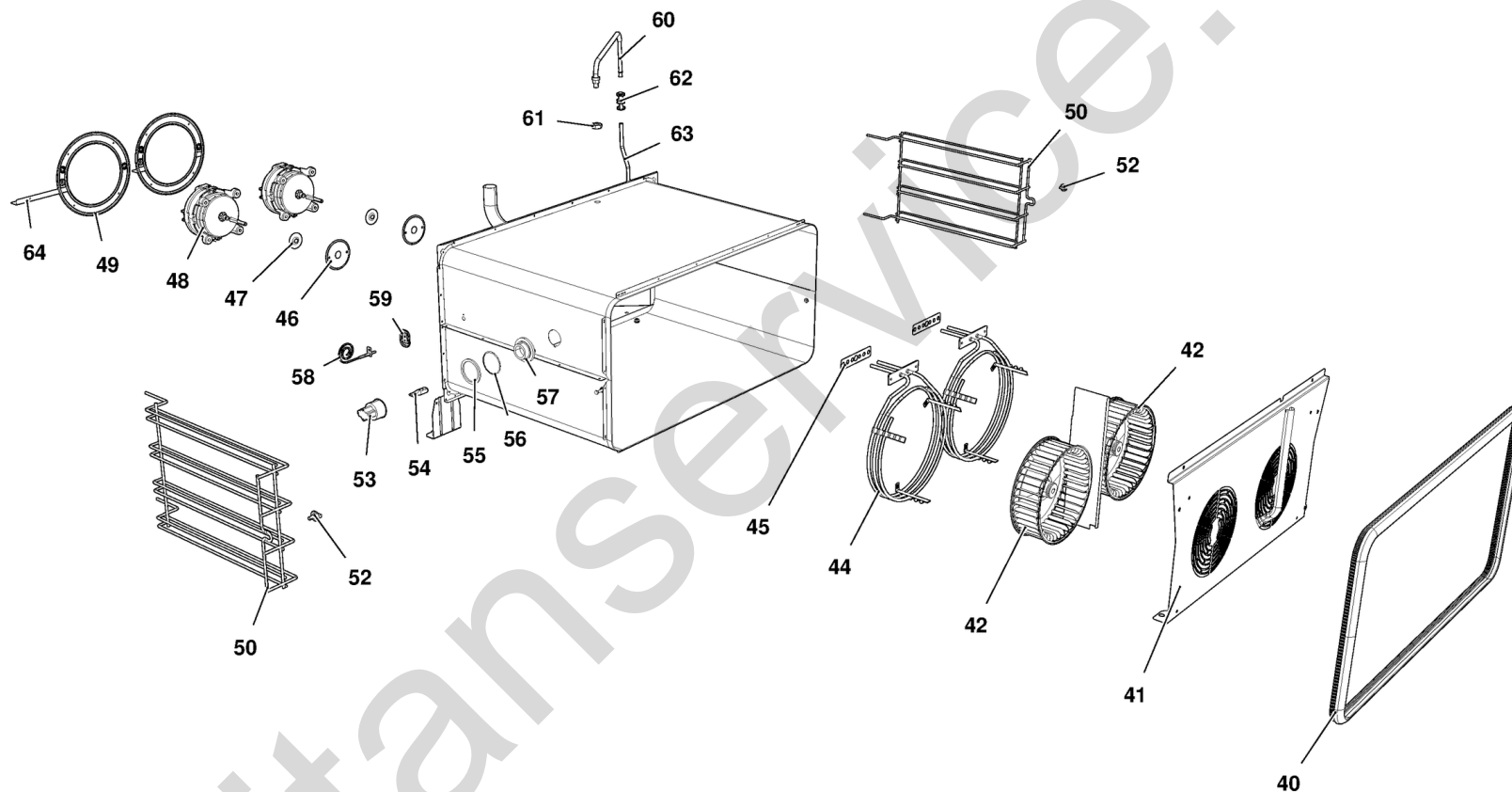
MOD:XFT195



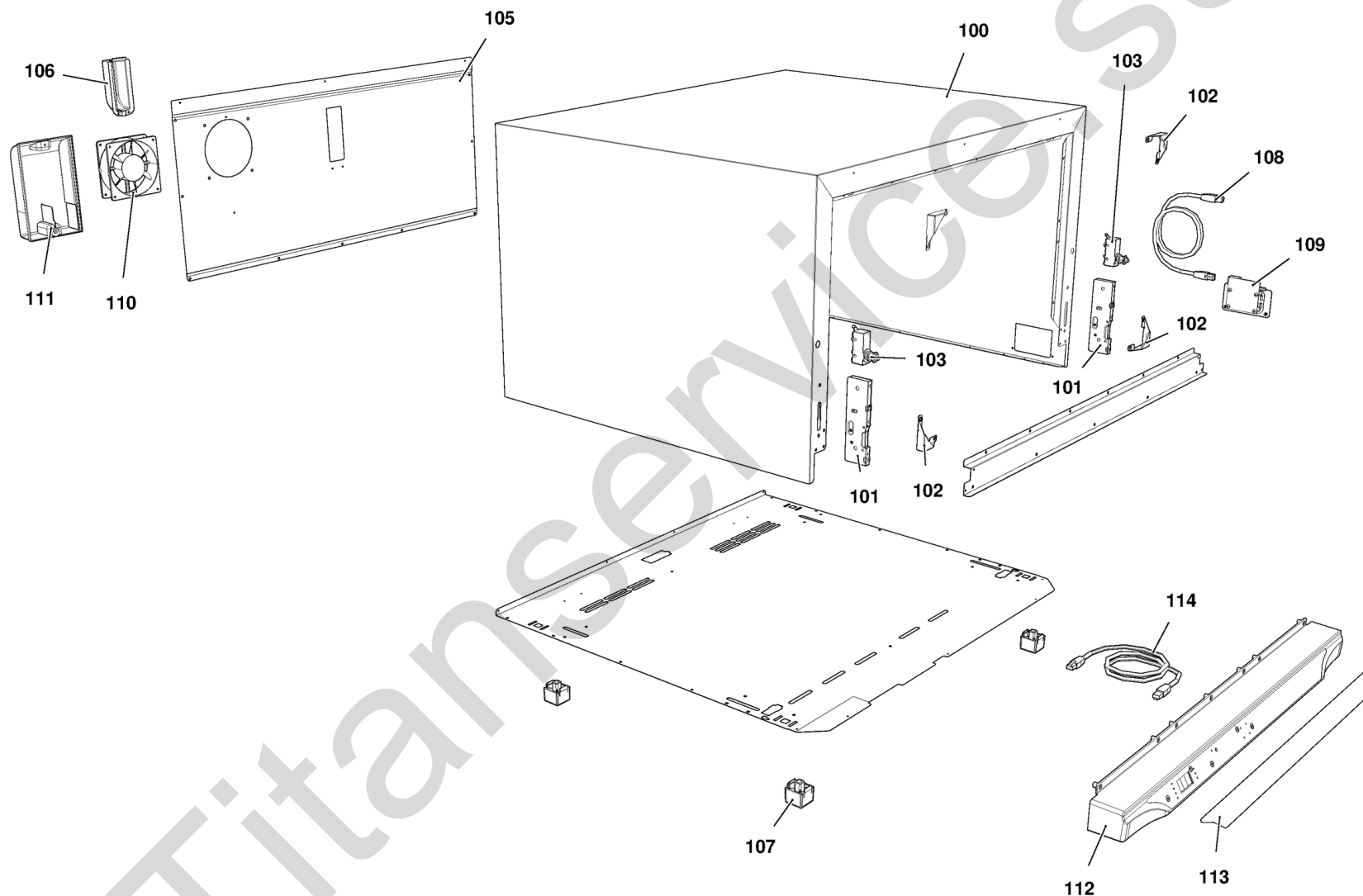
MOD:XFT195



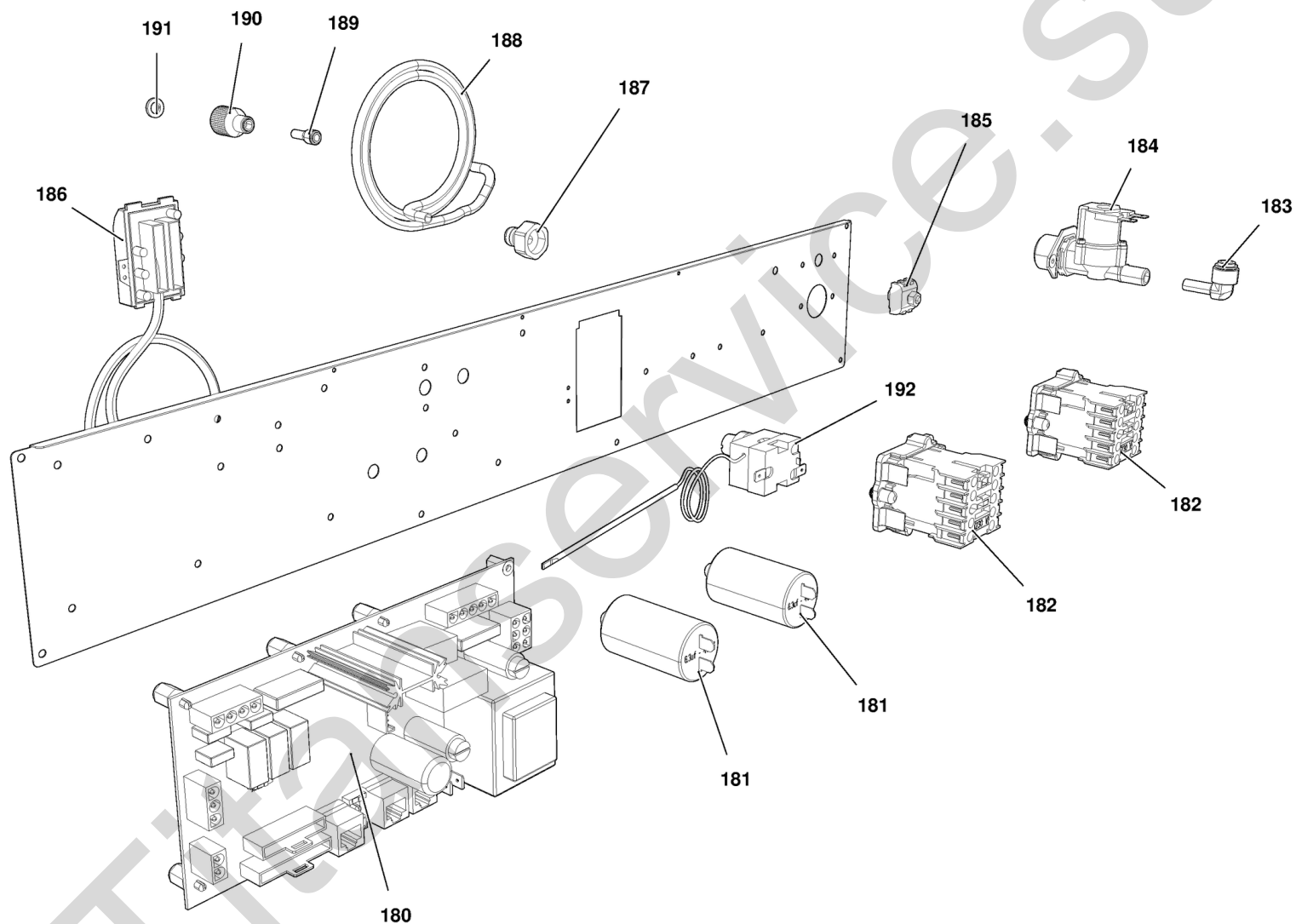
MOD:XFT195



MOD:XFT195



MOD:XFT195



MOD:XFT195



IT

Descrizione codici

1	VT1072A	VETRO EST. 798X424 NERO XF190/193/195
2	VT1070B	VETRO INTERNO 715X415X6 BETFL
3	0H1930B	TUBO MANIGLIA L= 718 Ø18x1
4	MG1015B	TERMINALE MANIGLIA L.MISS/L.MICRO/CHEFTO
5	VM1025A	TAPPO NYLON PA66 V2 GRIGIO Ø16
6	CR1050A	CERNIERA PORTA FORNO RIBALTA XVC104-LM
7	VM1919A	TAPPO COLONNINA INF SX
8	VM1918A	TAPPO COLONNINA INF DX
9	VM1916A	TAPPO COLONNINA SUP DX
10	VM1917A	TAPPO COLONNINA SUP SX
40	GN1354A	GN1110A-GUARNIZIONE PORTA LM ROSSELLA
41	OG1537A	CARTER ARIA LM ROSSELLA
42	VN1025A	VENTOLA D=196 H=61 38 PALE INOX DADO M8
42	VN1025A	VENTOLA D=196 H=61 38 PALE INOX DADO M8
44	RS1090A	RESISTENZA CIRCOLARE D=230 3 SPIRE
45	GN1327A	GUARNIZIONE RES. 100X22
46	0H3020A	DISCO TENUTA ALBERO MOTORE
47	GN1140A	GUARNIZIONE PORTAMOTORE STAMP.
48	VN1130A	MOTORE FORNO 330W 230V 50/60HZ
49	0H3586A	LAMIERA PROTEZIONE MOTORE ZINCATO
50	GRL1025A	GRIGLIA LATERALE DX/SX CROMATA
50	GRL1025A	GRIGLIA LATERALE DX/SX CROMATA
52	VM1815A	NOTTOLINO M6 CROMATO FISS. GRIGLIE
53	VE1015A	PORTA LAMPADA SERIE 2 PER LAMPADA
54	VE1005A	LAMPADA HALOPIN 25W
55	GN1065A	GUARNIZIONE PORTALAMPADA DE=53.2
56	GN1055A	OR 46x2 VMQ 70 ROSSO
57	VT1195A	VETRO COPRILAMPADA BOROSILICATO TEMPRATO
58	TR1105A	SONDA TEMPERATURA PT100 L1000
59	VM2052A	COPERCHIO Sonda TEMPERATURA LM
60	0H1990A	TUBO EST. UMIDITA' + RC1165A0

61	RC1170A	DADO M14 H=8 CH=22 INOX
62	EL1055A	RIDUZIONE INTERMEDIA D10-D8
63	TB2034A	TB1815A-IMPIANTO IDRICO FORNI LMS
64	0H1209A	ALETTA PARACALORE ARIA MOTORE
100	OD1285G	MANTELLINO LM ROSSELLA
101	CR1000A	ATTACCO CERNIERA PORTA FORNO RIBALTA
102	0H1450A	ANGOLO FACCIATA MUFFOLA INOX XB-XV-XG
103	VE1295A	MICROINTERRUTTORE PORTA MK 16A 230V UL
105	OF1095D	SCHIENA LM ROSSELLA
106	VM1951A	CUFFIA COPRICAMINO IP
107	PD1001A	PIEDINO 35X35 H26 PLASTICA+GOMMA GRIGIO
108	CE1012A	CAVO DI RETE RJ45 L1MT
109	PE2012A	ASSIEME UNOXLink LM RJ45
110	VN1163A	VENTOLA RAFFREDDAMENTO 230V
111	VM1556A	PROTEZIONE VENTOLA RAFFREDDAMENTO CT-BT
112	VM2188B	CONTROLLO COMPLETO LM800 DYNAMIC
113	MS1013A	MASCHERINA SERIGRAFATA DYNAMIC LM800 TOU
114	CE1305A	CAVO RJ45 - RJ45 L=2MT
180	PE1983B	SCHEDA POTENZA 230V LMISS DYNAMIC
181	VE1110A	CONDENSATORE 6,3 µF 450VAC 50/60Hz
182	VE1115A	MINICONTATTORE QUADRIPOLORE 20 A 230 V
183	EL1195B	RACCORDO GOMITO Ø8F-Ø8M
184	EL1085A	ELETTR.SING. ATT. J.GUEST INCORPORATO
185	VM1750A	MORSETTIERA A PETTINE
186	CE1130A	CAVO 5X1,5MMQ H07RN-F L=1,5M + MORS.K1/6
187	RC1030A	RACCORDO DIRITTO Ø8 - 3/4 FEMMINA JG
188	TB1079A	TUBO D8 ALLACCIAMENTO RETE LMISS
189	RC1002A	RACCORDO RIDUZIONE CODOLO 10M-8F
190	RC1365A	RACCORDO JG FEMMINA 3/4"-10
191	GN1200A	GUARNIZIONE D=24 RACCORDO 3/4 GOMMA
192	TR1136A	TERMOSTATO SIC. UNIP. 330°C

MOD:XFT195



EN

Codes descriptions

1	VT1072A	LINE MISS ROSSELLA BLACK EXTERNAL GLASS
2	VT1070B	INTERNAL GLASS 715x415x6 BTFL
3	0H1930B	HANDLE TUBE L= 718 Ø18x1
4	MG1015B	L.MISS/L.MICRO/CHEFTOP HANDLE TERMINALS
5	VM1025A	NYLON LID PA66 V2 GREY Ø16
6	CR1050A	DOOR HINGE XVC104-LM ROSSELLA
7	VM1919A	LEFT LOWER COLUMN CAP
8	VM1918A	RIGHT LOWER COLUMN CAP
9	VM1916A	RIGHT UPPER COLUMN CAP
10	VM1917A	LEFT UPPER COLUMN CAP
40	GN1354A	LineMiss ROSSELLA DOOR GASKET - GN1110A
41	OG1537A	Line Miss Rossella FAN GUARD
42	VN1025A	FAN D=196 H=61 38 BLADES STAINLESS
42	VN1025A	FAN D=196 H=61 38 BLADES STAINLESS
44	RS1090A	CIRC.HEAT. ELEMENT D=230 3 TURNS
45	GN1327A	HEATING ELEMENT GASKET 100X22X0.8
46	0H3020A	MOTOR SHAFT SEALING DISC
47	GN1140A	MOTOR SUPPORT GASKET
48	VN1130A	330W 230V 50/60HZ MOTOR
49	0H3586A	ZINCATE MOTOR GUARD PLATE XBC-XVC
50	GRL1025A	RIGHT/LEFT LAT.GRID CHROMIUM-PLATED
50	GRL1025A	RIGHT/LEFT LAT.GRID CHROMIUM-PLATED
52	VM1815A	M6 LATERAL SUPPORTS FIXING BOLT
53	VE1015A	LAMP HOLDER SERIE 2 FOR HALOGEN LAMP
54	VE1005A	HALOGEN LAMP 33W ENERGY SAVER
55	GN1065A	LAMP GLASS COVER SEAL
56	GN1055A	46x2 RED O-RING LAMP GLASS COVER SEAL
57	VT1195A	BOROSILICATE LIGHT BULB GLASS COVER
58	TR1105A	TEMPERATURE PROBE PT100 L1000
59	VM2052A	LineMiss TEMPERATURE PROBE COVER
60	0H1990A	EXTERNAL WATER PIPE + STAINLESS

61	RC1170A	STAINLESS STEEL NUT M14 H=8 CH=22
62	EL1055A	Ø10 - Ø8 INTERMEDIATE REDUCTION
63	TB2034A	L.MISS WATER SYSTEM - TB1815A
64	0H1209A	PROFILE HEAT COVER FOR MOTOR
100	0D1285G	L.MISS ROSSELLA EXTERNAL CHASING
101	CR1000A	HINGE LATCH L.M.
102	0H1450A	XB-XV-XG ST. STEEL MUFFLE FRONT CORNER
103	VE1295A	DOOR MICROSWITCH MK 16A 230V UL
105	0F1095D	LineMiss ROSSELLA EXTERNAL BACK PANEL
106	VM1951A	IP CHIMNEY COVER
107	PD1001A	FOOT 35X35 H26 GREY PLASTIC+RUBBER
108	CE1012A	RJ45 CABLE L= 1 MT
109	PE2012A	Line Miss RJ45 UNOXLink CONNECTING POINT
110	VN1163A	COOLING FAN 230V
111	VM1556A	XBC-XVC COOLING FAN GUARD
112	VM2188B	LMissTouch60x40 Dynamic COMPLETE CONTROL
113	MS1013A	L.MISS TOUCH DYN. CONTROL BOARD STICKER
114	CE1305A	RJ45 - RJ45 CABLE L=2MT
180	PE1983B	LMiss DYNAMIC POWER CARD 230V
181	VE1110A	CONDENSER 6,3 µF 450VAC 50/60Hz
182	VE1115A	MINI CONTACTOR WITH 4 POLES 20 A 230 V
183	EL1195B	Ø8F-Ø8M ELBOW CONNECTION
184	EL1085A	SINGLE WATER SOLENOID VALVE + J.GUEST
185	VM1750A	TERMINAL BOARD
186	CE1130A	CABLE 5x1,5MMQ H07RN-F L=1,5M
187	RC1030A	Ø8-3/4 FEMALE JG STRAIGHT CONNECTION
188	TB1079A	L.MISS D8 WATER PIPE
189	RC1002A	JG 10M-8F TERMINAL REDUCTION FITTING
190	RC1365A	3/4"-10 JG FEMALE CONNECTION
191	GN1200A	3/4 CONNECTION SEAL D=24 RUBBER+NET
192	TR1136A	SAFETY THERMOSTAT UNIP. 330°C