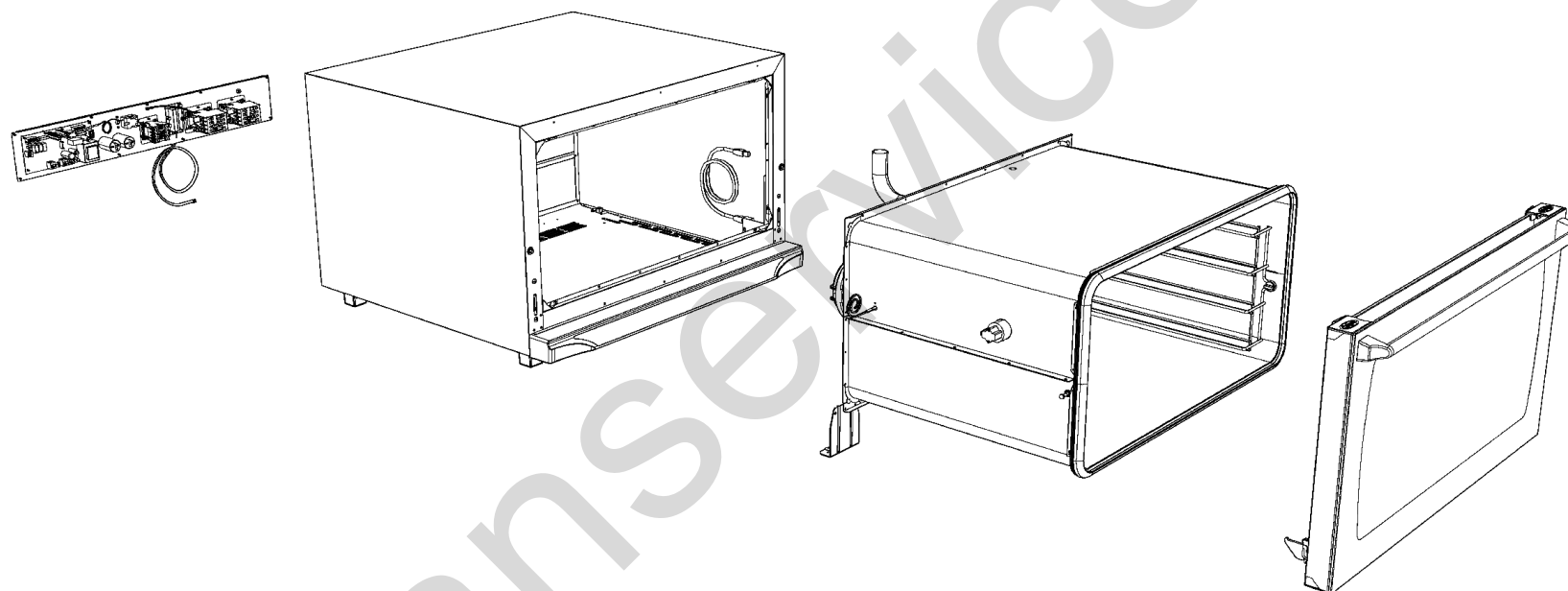
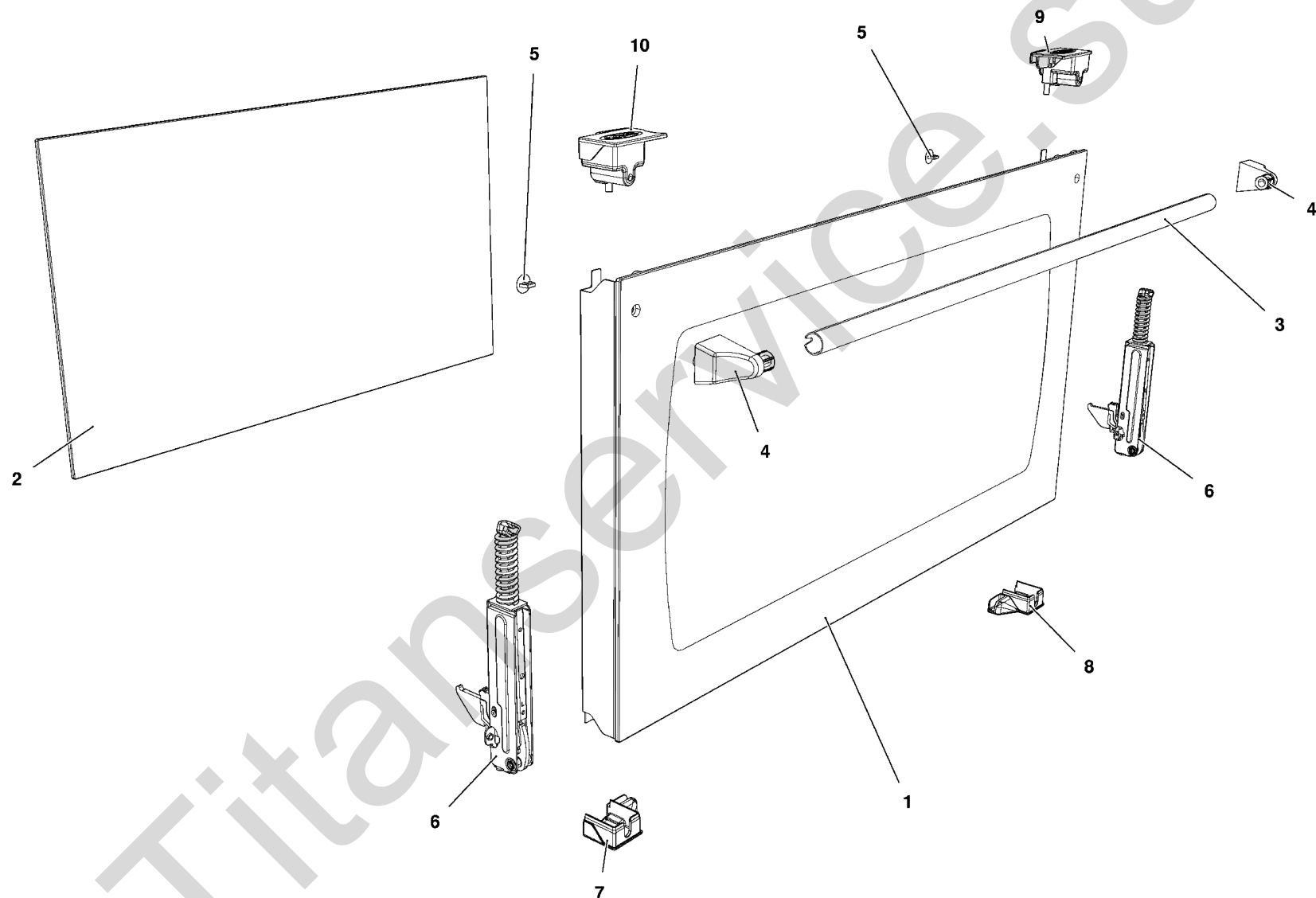


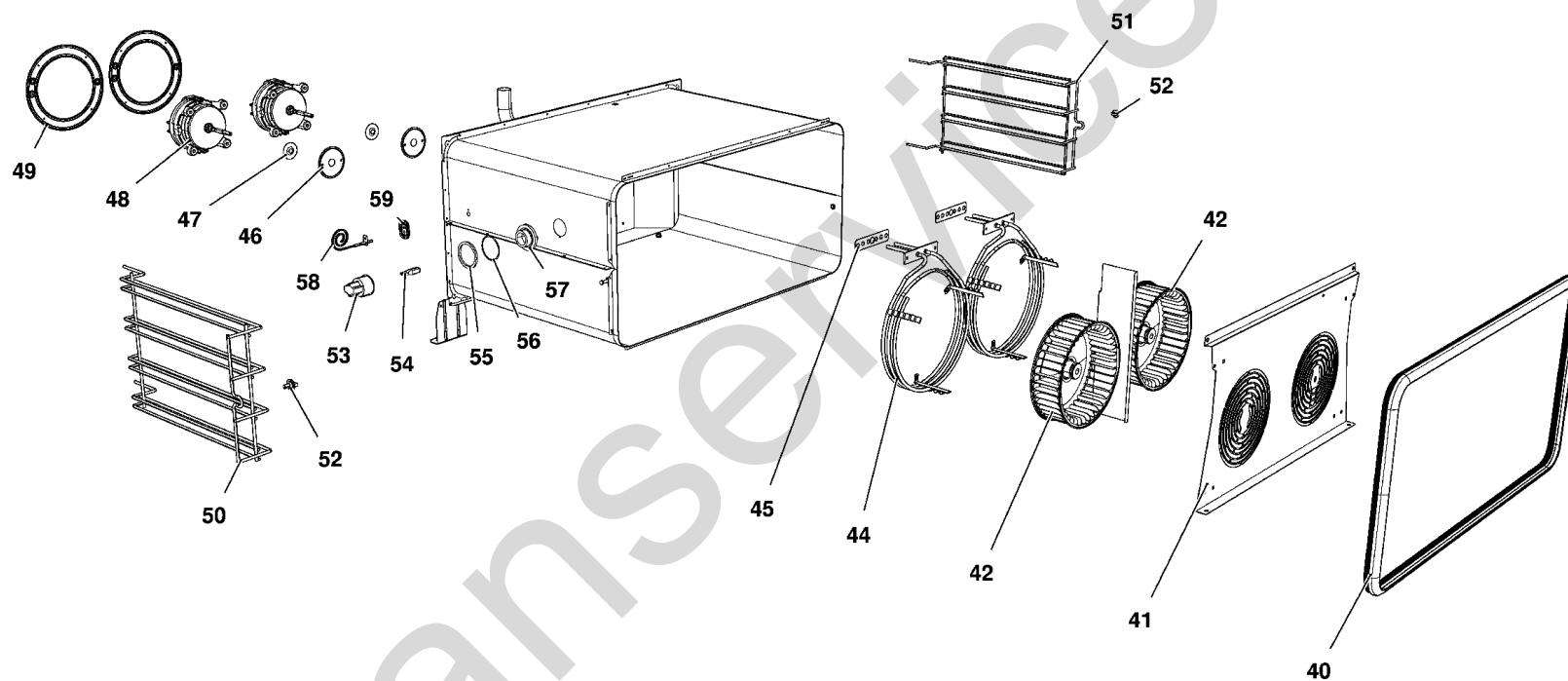
# MOD:XFT190



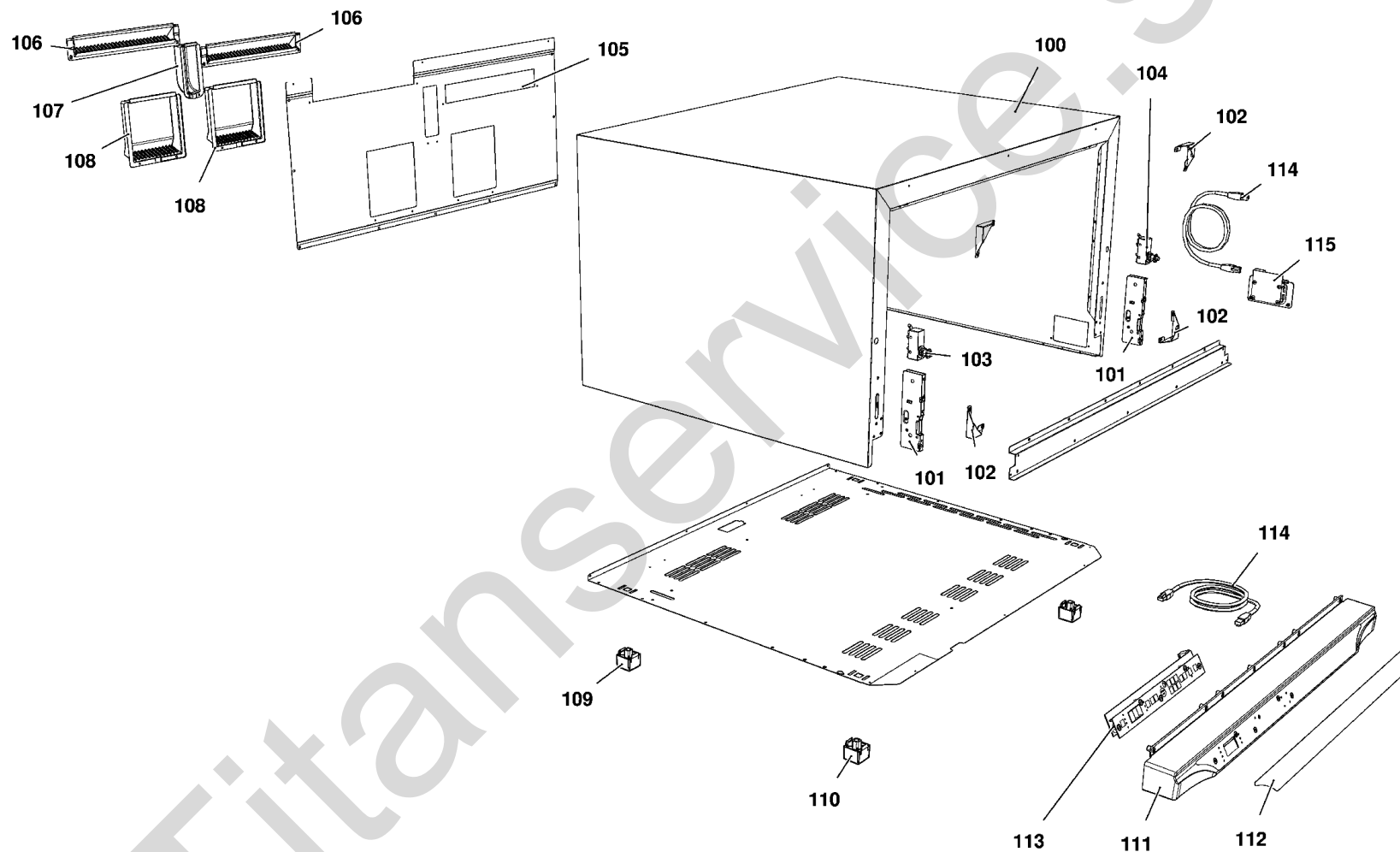
# MOD:XFT190



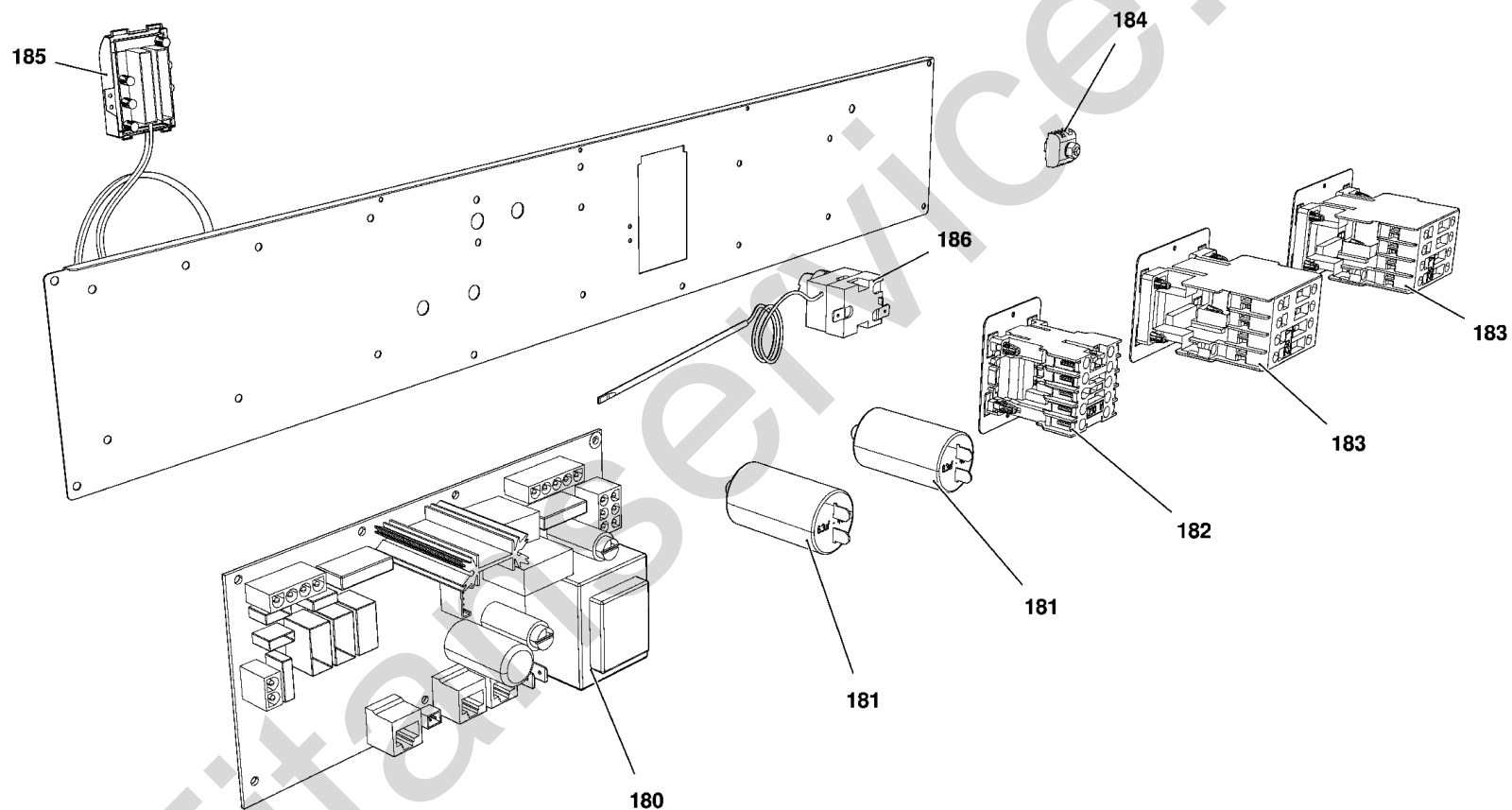
# MOD:XFT190



# MOD:XFT190



# MOD:XFT190



# MOD:XFT190



IT

## Descrizione codici

|     |          |                                          |
|-----|----------|------------------------------------------|
| 1   | VT1072A  | VETRO EST. 798X424 NERO XF190/193/195    |
| 2   | VT1070B  | VETRO INTERNO 715X415X6 BETFL            |
| 3   | 0H1930B  | TUBO MANIGLIA L= 718 Ø18x1               |
| 4   | MG1015B  | TERMINALE MANIGLIA L.MISS/L.MICRO/CHEFTO |
| 5   | VM1025A  | TAPPO NYLON PA66 V2 GRIGIO Ø16           |
| 6   | CR1050A  | CERNIERA PORTA FORNO RIBALTA XVC104-LM   |
| 7   | VM1919A  | TAPPO COLONNINA INF SX                   |
| 8   | VM1918A  | TAPPO COLONNINA INF DX                   |
| 9   | VM1916A  | TAPPO COLONNINA SUP DX                   |
| 10  | VM1917A  | TAPPO COLONNINA SUP SX                   |
| 40  | GN1354A  | GN1110A-GUARNIZIONE PORTA LM ROSSELLA    |
| 41  | 0G1125C  | CARTER ARIA LM ROSSELLA                  |
| 42  | VN1025A  | VENTOLA D=196 H=61 38 PALE INOX DADO M8  |
| 42  | VN1025A  | VENTOLA D=196 H=61 38 PALE INOX DADO M8  |
| 44  | RS1090A  | RESISTENZA CIRCOLARE D=230 3 SPIRE       |
| 45  | GN1327A  | GUARNIZIONE RES. 100X22                  |
| 46  | 0H3020A  | DISCO TENUTA ALBERO MOTORE               |
| 47  | GN1140A  | GUARNIZIONE PORTAMOTORE STAMP.           |
| 48  | VN1130A  | MOTORE FORNO 330W 230V 50/60HZ           |
| 49  | 0H3586A  | LAMIERA PROTEZIONE MOTORE ZINCATO        |
| 50  | GRL1025A | GRIGLIA LATERALE DX/SX CROMATA           |
| 51  | GRL1025A | GRIGLIA LATERALE DX/SX CROMATA           |
| 52  | VM1815A  | NOTTOLINO M6 CROMATO FISS. GRIGLIE       |
| 53  | VE1015A  | PORTA LAMPADA SERIE 2 PER LAMPADA        |
| 54  | VE1005A  | LAMPADA HALOPIN 25W                      |
| 55  | GN1065A  | GUARNIZIONE PORTALAMPADA DE=53.2         |
| 56  | GN1055A  | OR 46x2 VMQ 70 ROSSO                     |
| 57  | VT1195A  | VETRO COPRILAMPADA BOROSILICATO TEMPRATO |
| 58  | TR1105A  | SONDA TEMPERATURA PT100 L1000            |
| 59  | VM2052A  | COPERCHIO Sonda TEMPERATURA LM           |
| 100 | OD1285G  | MANTELLINO LM ROSSELLA                   |

|     |         |                                          |
|-----|---------|------------------------------------------|
| 101 | CR1000A | ATTACCO CERNIERA PORTA FORNO RIBALTA     |
| 102 | 0H1450A | ANGOLO FACCIATA MUFFOLA INOX XB-XV-XG    |
| 103 | VE1295A | MICROINTERRUTTORE PORTA MK 16A 230V UL   |
| 104 | VE1295A | MICROINTERRUTTORE PORTA MK 16A 230V UL   |
| 105 | 0F1095C | SCHIENA LM ROSSELLA                      |
| 106 | VM1950A | GRONDAIA PLASTICA                        |
| 107 | VM1951A | CUFFIA COPRICAMINO IP                    |
| 108 | VM1952A | COPRIMOTORE IP                           |
| 109 | PD1001A | PIEDINO 35X35 H26 PLASTICA+GOMMA GRIGIO  |
| 110 | PD1001A | PIEDINO 35X35 H26 PLASTICA+GOMMA GRIGIO  |
| 111 | VM2017A | CRUSCOTTO COMANDI DYNAMIC LMiss800       |
| 112 | MS1017A | MASCHERINA SERIGRAFATA CLASSIC LM800 TOU |
| 113 | PE1980A | ASM SCHEDA CONTROLLO LMiss TOUCH         |
| 114 | CE1012A | CAVO DI RETE RJ45 L1MT                   |
| 114 | CE1012A | CAVO DI RETE RJ45 L1MT                   |
| 115 | PE2012A | ASSIEME UNOXLink LM RJ45                 |
| 180 | PE2010A | SCHEDA POTENZA 230V LMiss CLASSIC        |
| 181 | VE1110A | CONDENSATORE 6,3 µF 450VAC 50/60Hz       |
| 182 | VE1115A | MINICONTATTORE QUADRIPOLORE 20 A 230 V   |
| 183 | VE1095A | TELERUTTORE GE 25A 230V 50/60            |
| 184 | VM1750A | MORSETTIERA A PETTINE                    |
| 185 | CE1130A | CAVO 5X1,5MMQ H07RN-F L=1,5M + MORS.K1/6 |
| 186 | TR1136A | TERMOSTATO SIC. UNIP. 330°C              |

# MOD:XFT190



EN

## Codes descriptions

|     |          |                                         |
|-----|----------|-----------------------------------------|
| 1   | VT1072A  | LINE MISS ROSSELLA BLACK EXTERNAL GLASS |
| 2   | VT1070B  | INTERNAL GLASS 715x415x6 BTFL           |
| 3   | 0H1930B  | HANDLE TUBE L= 718 Ø18x1                |
| 4   | MG1015B  | L.MISS/L.MICRO/CHEFTOP HANDLE TERMINALS |
| 5   | VM1025A  | NYLON LID PA66 V2 GREY Ø16              |
| 6   | CR1050A  | DOOR HINGE XVC104-LM ROSSELLA           |
| 7   | VM1919A  | LEFT LOWER COLUMN CAP                   |
| 8   | VM1918A  | RIGHT LOWER COLUMN CAP                  |
| 9   | VM1916A  | RIGHT UPPER COLUMN CAP                  |
| 10  | VM1917A  | LEFT UPPER COLUMN CAP                   |
| 40  | GN1354A  | LineMiss ROSSELLA DOOR GASKET - GN1110A |
| 41  | OG1125C  | LineMiss ROSSELLA FAN GUARD             |
| 42  | VN1025A  | FAN D=196 H=61 38 BLADES STAINLESS      |
| 42  | VN1025A  | FAN D=196 H=61 38 BLADES STAINLESS      |
| 44  | RS1090A  | CIRC.HEAT. ELEMENT D=230 3 TURNS        |
| 45  | GN1327A  | HEATING ELEMENT GASKET 100X22X0.8       |
| 46  | 0H3020A  | MOTOR SHAFT SEALING DISC                |
| 47  | GN1140A  | MOLDED MOTOR SUPPORT GASKET             |
| 48  | VN1130A  | 330W 230V 50/60HZ MOTOR                 |
| 49  | 0H3586A  | ZINCATE MOTOR GUARD PLATE XBC-XVC       |
| 50  | GRL1025A | RIGHT/LEFT LAT.GRID CHROMIUM-PLATED     |
| 51  | GRL1025A | RIGHT/LEFT LAT.GRID CHROMIUM-PLATED     |
| 52  | VM1815A  | M6 LATERAL SUPPORTS FIXING BOLT         |
| 53  | VE1015A  | LAMP HOLDER SERIE 2 FOR HALOGEN LAMP    |
| 54  | VE1005A  | HALOGEN LAMP 33W ENERGY SAVER           |
| 55  | GN1065A  | SEAL FOR LAMP GLASS COVER (PURE         |
| 56  | GN1055A  | OR 46x2 VMQ 70 RED                      |
| 57  | VT1195A  | BOROSILICATE LIGHT BULB GLASS COVER     |
| 58  | TR1105A  | TEMPERATURE PROBE PT100 L1000           |
| 59  | VM2052A  | LineMiss TEMPERATURE PROBE COVER        |
| 100 | OD1285G  | L.MISS ROSSELLA EXTERNAL CHASING        |

|     |         |                                          |
|-----|---------|------------------------------------------|
| 101 | CR1000A | HINGE LATCH L.M.                         |
| 102 | 0H1450A | XB-XV-XG ST. STEEL MUFFLE FRONT CORNER   |
| 103 | VE1295A | DOOR MICROSWITCH MK 16A 230V UL          |
| 104 | VE1295A | DOOR MICROSWITCH MK 16A 230V UL          |
| 105 | 0F1095C | LINE MISS ROSSELLA BACK PANEL            |
| 106 | VM1950A | PLASTIC DRIP FLAP                        |
| 107 | VM1951A | IP CHIMNEY COVER                         |
| 108 | VM1952A | IP MOTOR COVER                           |
| 109 | PD1001A | FOOT 35X35 H26 GREY PLASTIC+RUBBER       |
| 110 | PD1001A | FOOT 35X35 H26 GREY PLASTIC+RUBBER       |
| 111 | VM2017A | 600x400 LineMiss Dynamic CONTROL BOARD   |
| 112 | MS1017A | 60x40 L.Miss Touch Classic STICKER +SER. |
| 113 | PE1980A | LineMiss TOUCH CONTROL BOARD             |
| 114 | CE1012A | RJ45 CABLE L= 1 MT                       |
| 114 | CE1012A | RJ45 CABLE L= 1 MT                       |
| 115 | PE2012A | Line Miss RJ45 UNOXLink CONNECTING POINT |
| 180 | PE2010A | LineMiss DYNAMIC TOUCH POWER CARD        |
| 181 | VE1110A | CONDENSER 6,3 µF 450VAC 50/60Hz          |
| 182 | VE1115A | MINI CONTACTOR WITH 4 POLES 20 A 230 V   |
| 183 | VE1095A | REMOTE CONTROL SWITCH GE 25A 230V        |
| 184 | VM1750A | TERMINAL BOARD                           |
| 185 | CE1130A | CABLE 5x1,5MMQ H07RN-F L=1,5M            |
| 186 | TR1136A | SAFETY THERMOSTAT UNIP. 330°C            |