

Diagram of the TAB-A connector assembly. The assembly consists of a main body with a hexagonal nut at the top, a central threaded port, and a smaller side port. A cable is connected to the bottom of the assembly. A dashed box labeled '8' indicates the area where the cable is connected. A label '9' points to the main body of the assembly. The label 'TAB-A' is positioned next to the assembly.

Diagram illustrating the assembly of Part A. The main unit (labeled 8) is shown with a connector (labeled 7) being attached to it. The connector (7) is a cylindrical component with a threaded cap. The main unit (8) is a rectangular box with a handle and a connector port. The connector (7) is shown being inserted into the port of the main unit (8). The connector (7) is labeled **TAB-B**. Below the connector (7) is a small circular component, likely a cap or a seal, which is shown being placed on the connector (7).

## Part.A

---

21

## Part A

22

---

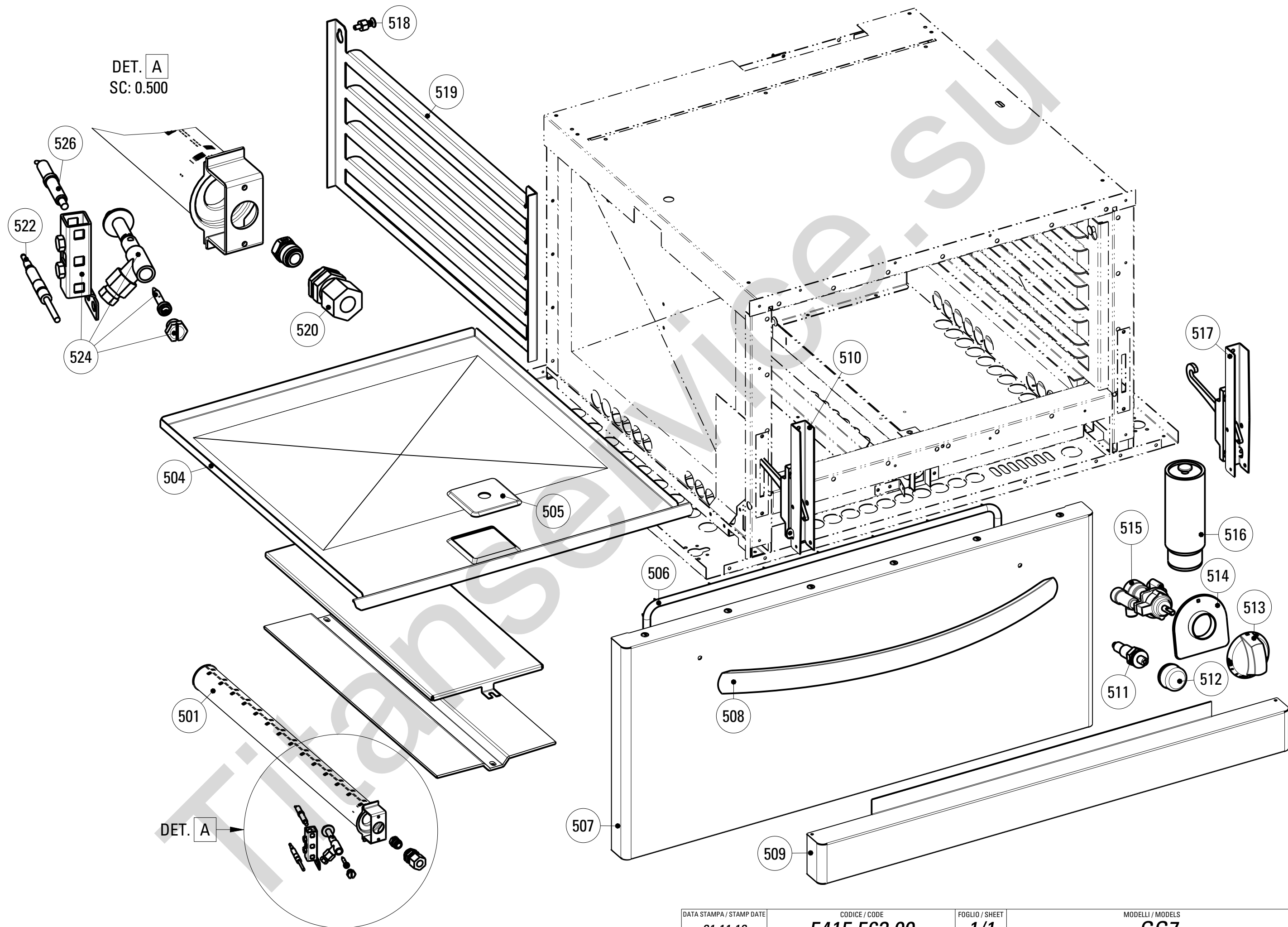
6

4

3

1

2



**CODICI RICAMBIO PER FINITO / SPARE PARTS FOR THE FINISHED PRODUCT**
**Aggiornato al/Updated to 27/11/17**

Artic./Item	Descrizione/Description		Modello/Model
<b>613014</b>	<b>CUCINA GAS 6 FUOCHI CON FORNO GAS GN2/1 6 BURNERS GAS RANGE WITH GN2/1 GAS OVEN</b>		<b>PF105GG7</b>
Cons./Recom.	Pos./Posit.	Ricambio/Replacement	Prezzo/Price List
	00304000	RC00304000 MORSETTO EQUIPOTENZIALE COMPLETO	EQUIPOTENTIAL CONNECTING BLOCK 6,62
*	01072000	RC01072000 CAVETTO PER ACCENDITORE FORNO L7	OVEN LIGHTER CABLE L7 22,29
	01900000	RC01900000 ANELLO CAPPuccio PIEZO	PIEZO IGNITER NIPPLE RING 8,99
	01	RC01052000 CAMINO 1050 L7	FLUE 1050 L7 139,25
	03	RC01180000 CRUSCOTTO PF105GG7	CONTROL PANEL PF105GG7 62,90
	04	RC01145000 BACINELLA CASSETTO PCG	REMOVABLE DRIP TRAY PCG 60,68
	06	RC01887000 MANOPOLA GAS NERA	GAS BLACK KNOB 8,15
	06	RC02074000 MANOPOLA GAS GRIGIA	GREY KNOB 8,79
*	07	RC00118000 TERMOCOPPIA M9X1 L600	TERMOCOUPLE 15,56
	08	RC01140000 GRUPPO PILOTA	TOP BURNER PILOT GROUP 21,40
*	09	RC05001400 RUBINETTO GAS	GAS COCK 79,66
*	10	RC01149000 SPARTIFIAMMA BRUCIATORE 9KW	BURNER COVER 65,09
	11	RC01146000 CORPO BRUCIATORE 7,2KW	BURNER 7.2 KW 72,16
	12	RC01137000 VENTURI BRUCIATORE 7.2KW	VENTURI BURNER 7.2KW 46,45
*	13	RC01151000 SPARTIFIAMMA BRUCIATORE 3,3KW	BURNER COVER 38,51
	14	RC01148000 CORPO BRUCIATORE 3,3KW	BURNER 3.3KW 63,77
	15	RC01138000 VENTURI BRUCIATORE 3.3KW	VENTURI BURNER 3.3KW 51,75
	16	RC01141000 BOCCOLA REGOLAZIONE ARIA D16	AIR REGULATION BUSHING D16 6,62
	17	RC01143000 BOCCOLA REGOLAZIONE ARIA D22	AIR REGULATION BUSHING D22 7,18
	18	RC01142000 BOCCOLA REGOLAZIONE ARIA D20	AIR REGULATION BUSHING D20 6,84
	19	RC01139000 VENTURI BRUCIATORE 4.5KW	VENTURI BURNER 4.5KW 46,78
	20	RC01147000 CORPO BRUCIATORE 4,5KW	BURNER KW4.5 64,88
*	21	RC01150000 SPARTIFIAMMA BRUCIATORE 5,5KW	BURNER COVER 42,48

**PAG. 1**
**L'azienda si riserva il diritto di apportare ulteriori aggiornamenti senza preavviso. / The data may be updated without prior warning**

**CODICI RICAMBIO PER FINITO / SPARE PARTS FOR THE FINISHED PRODUCT**
**Aggiornato al/Updated to 27/11/17**

Artic./Item	Descrizione/Description				Modello/Model
613014	CUCINA GAS 6 FUOCHI CON FORNO GAS GN2/1 6 BURNERS GAS RANGE WITH GN2/1 GAS OVEN				PF105GG7
Cons./Recom.	Pos./Posit.	Ricambio/Replacement			Prezzo/Price List
	22	RC01144000	SUPPORTO PENTOLE L7	PAN GRID	65,66
	501	RC01134000	BRUCIATORE FORNO	OVEN BURNER	41,70
	504	RC01136000	FONDO FORNO ESTRAIBILE SMALTATO	EXTRACTABLE OVEN BOTTOM	20,97
	505	RC01069000	COPERCHIETTO D'ISPEZIONE FORNO L7	COVER	21,63
	506	RC01826000	GUARNIZIONE TESSILE PER FORNO GN	TEXTILE GASKET FOR OVEN	52,43
	507	RC02028000	PORTA FORNO GN2/1 TECNO70	DOOR W/HANDLE	277,87
	508	RC02082000	MANIGLIA FORNO	OVEN HANDLE	55,54
	509	RC01064000	ZOCCOLO FORNO L7	OVEN SOCLE L7	46,45
	510	RC01068000	CERNIERA SX PORTA FORNO GN C/P.RULLINO	LEFT HINGE	37,51
*	512	RC00128000	ACCENDITORE PIEZO CON DADO	PIEZO IGNITER	16,99
*	512	RC01685000	CAPPUCCIO IN GOMMA PER PIEZO	GUMMY CAP FOR PIEZO IGNITER	9,71
	513a	RC02058000	MANOPOLA FORNO GAS NERA	BLACK KNOB	8,15
	513b	RC02070000	MANOPOLA FORNO GAS GRIGIA	GREY KNOB	8,79
	515	RC01133000	RUBINETTO FORNO GAS	OVEN THERMOSTATIC GAS COCK	167,04
	516	RC01602000	PIEDE 1"3/4 H250	FOOT	18,98
	517	RC01067000	CERNIERA DX PORTA FORNO GN C/P.RULLINO	RIGHT HINGE	37,51
	518	RC01056000	PIOLINO SUPP.GRIGLIA FORNO EL.STATICO	HOOK	6,51
	519	RC01057000	SUPPORTO GRIGLIA FORNO EL.STATICO	OVEN TRAY RUNNER	18,65
	520	RC00414000	PORTAUGELLO	NOZZLE HOLDER	9,50
*	522	RC01483000	TERMOCOPPIA L=1500 M8X1L11 A1	THERMOCOUPLE L=1500 M8X1L11 A1	17,99
*	524	RC00119000	PILOTA ACCENDITORE 3 VIE	PILOT IGNITER	23,17
*	526	RC00120000	CANDELETTA D'ACCENSIONE	SPARK PLUG	13,47