

PARTI DI RICAMBIO
PIECES DETACHEES
SPARE PARTS
ERSATZTEILE
LISTA DE RECAMBIOS

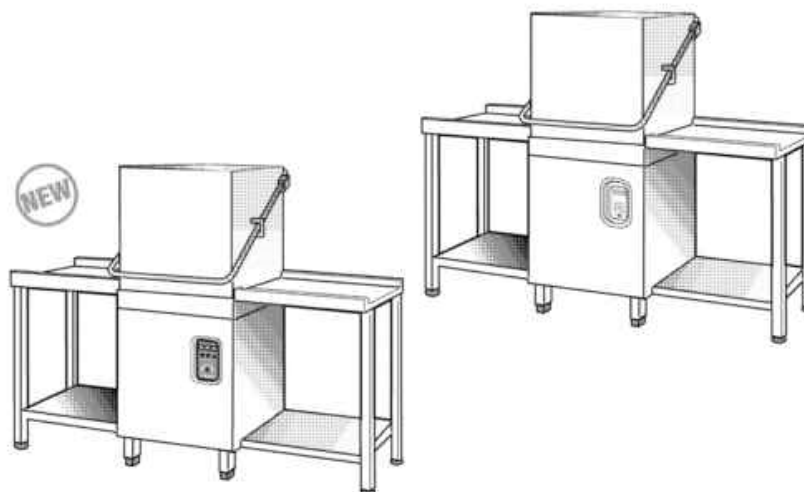
LC 700

LC 900

LC 1200

PRODUCTION START 10/03

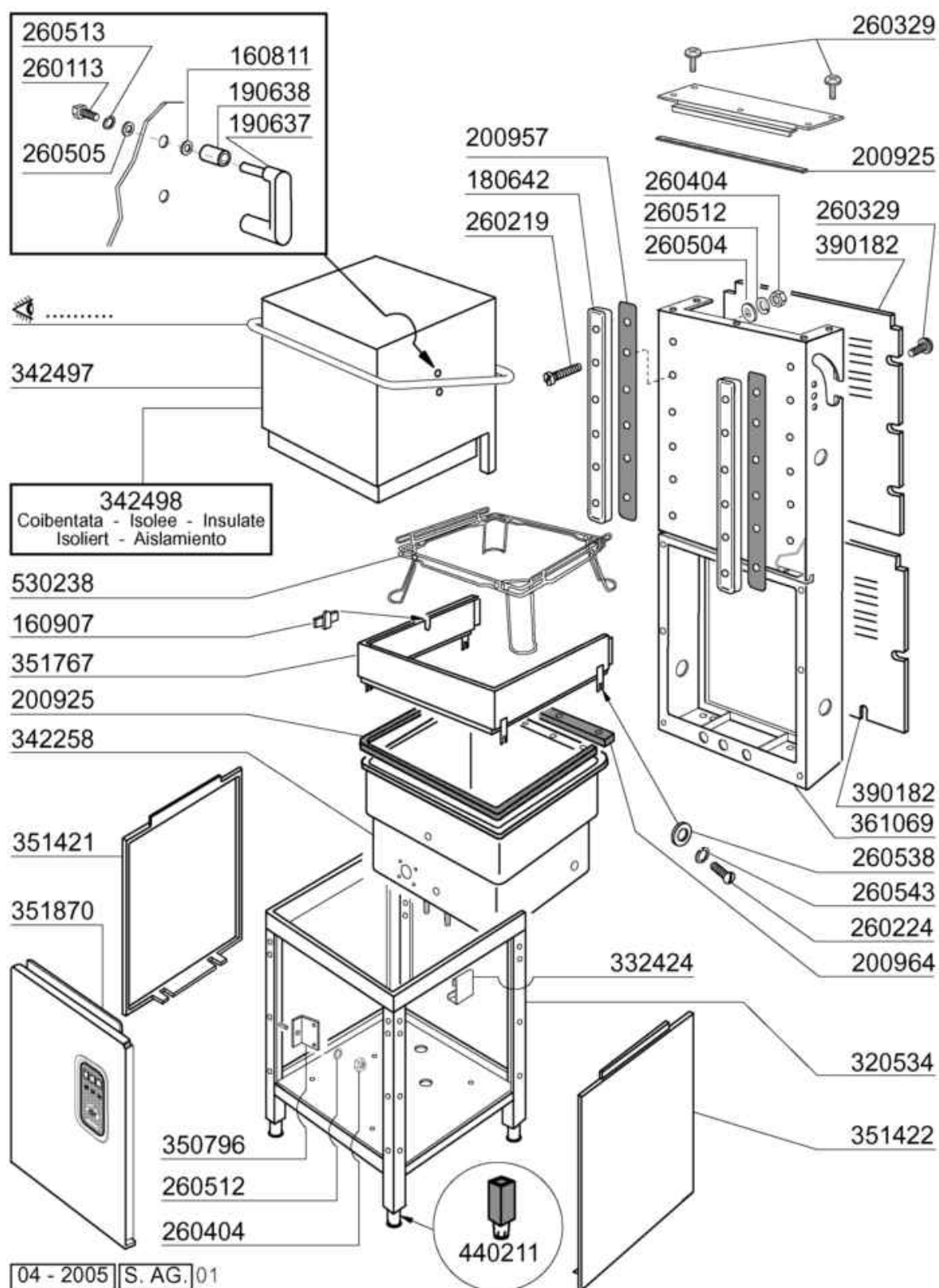
NEW DESIGN 04/05



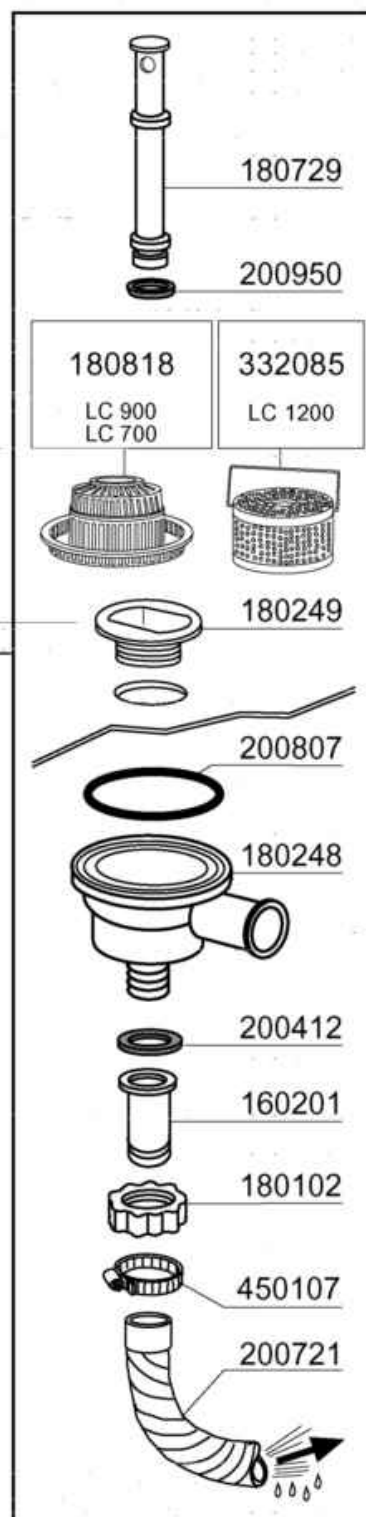
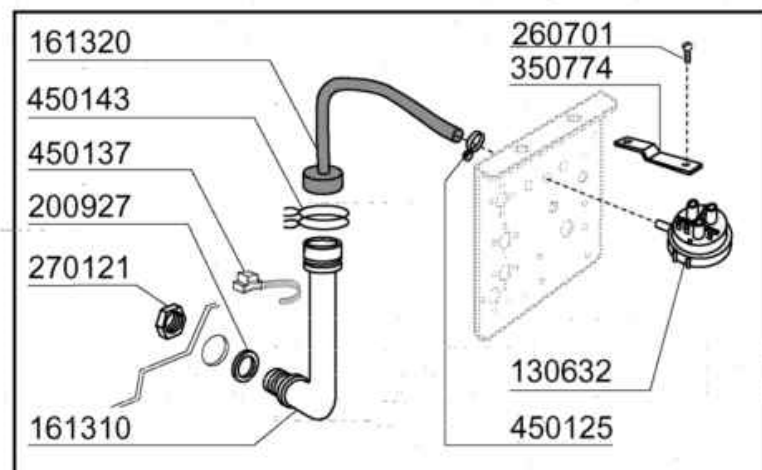
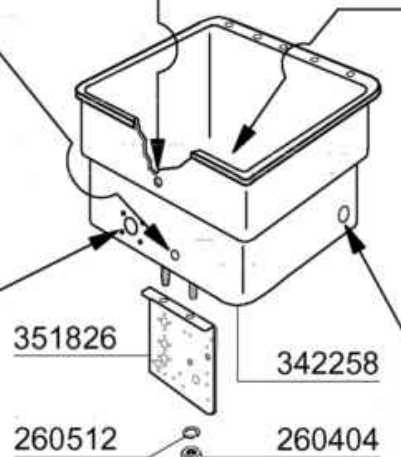
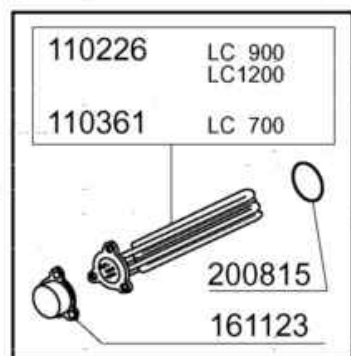
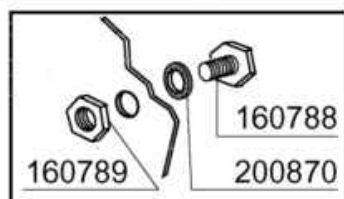
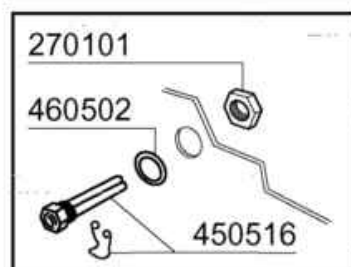
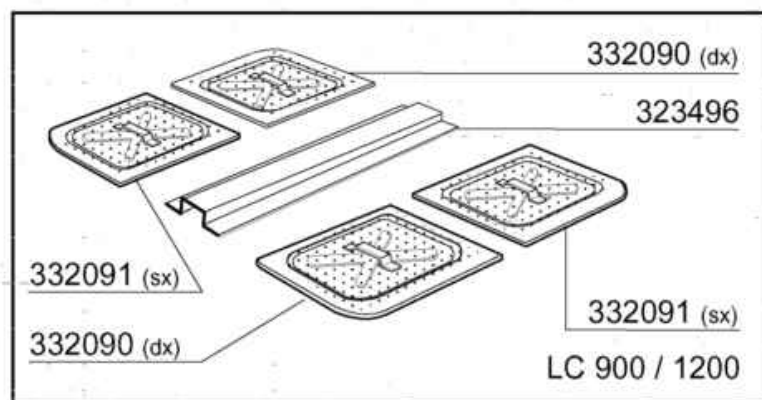
COMENDA

04 - 2005 | S. AG.

-
- 1 Carrozzeria e vasca
 - 2 Vasca
 - 3 Maniglione
 - 4 Colonna lavaggio/Risciacquo
 - 5 Mulinello
 - 6 Gruppo risciacquo
 - 7 Gruppo termostati/elettrovalvola
 - 8 Pompa lavaggio
 - 9 Pompa lavaggio
 - 10 Pannello comandi
 - 11 Pannello comandi
 - 12 Impianto elettrico
 - 13 Impianto elettrico
 - 14 Impianto elettrico
 - 15 Dosatore brillantante
 - 16 Pompa scarico
 - 17 CRC
 - 18 CRC2

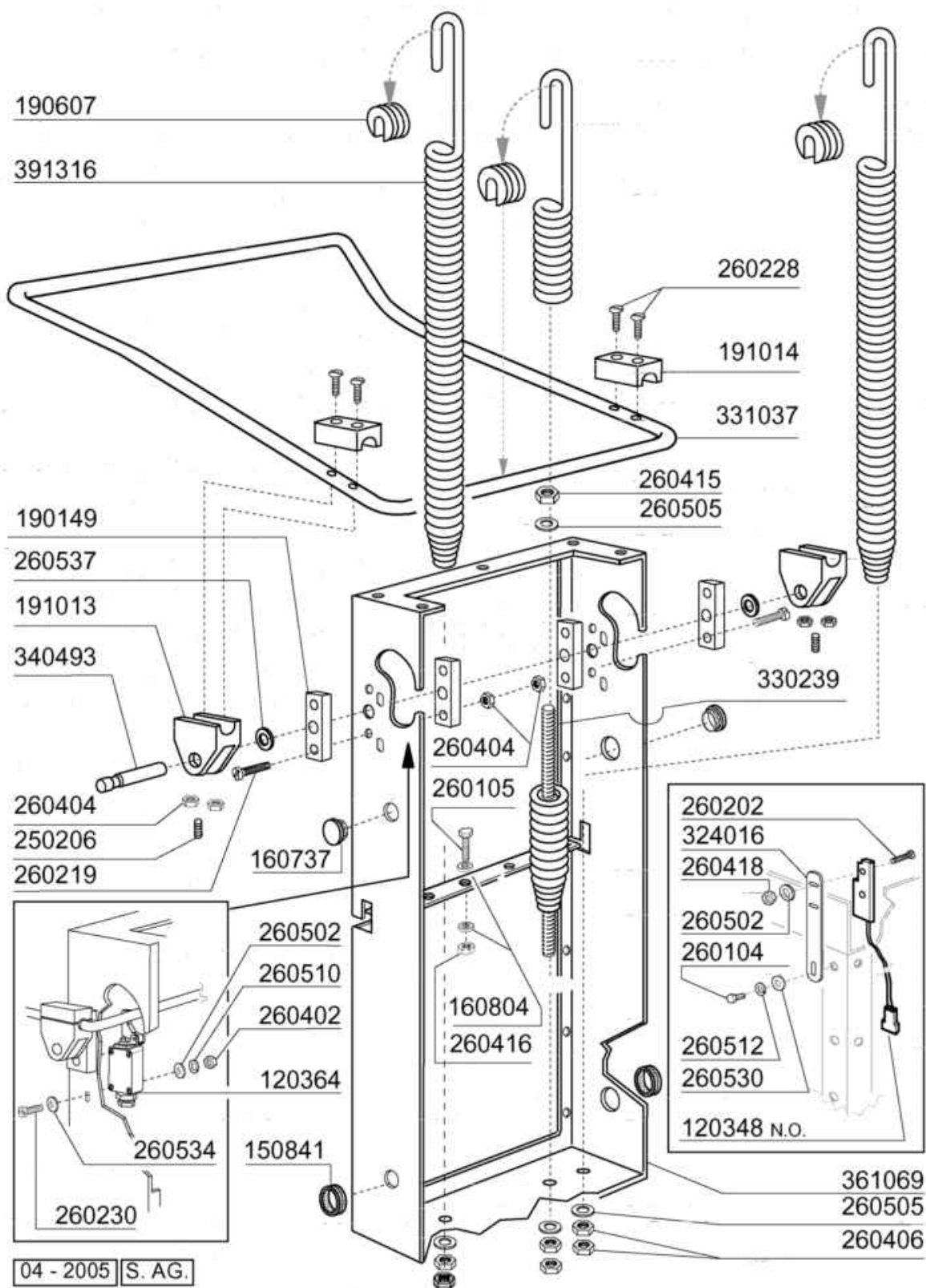


| Codice | Descrizione |
|--------|--------------------------------|
| 160811 | RONDELLA ALGOFLON 18X8,5X1 |
| 160907 | BLOCCHETTO POS.MENS.C95-155 |
| 180642 | BINARIO PER CAPOT PER C2001 |
| 190637 | CAVALLOTTO ROTOLAMENTO MANIGL. |
| 190638 | RULLO ROTOL.MANIGL.22X31,5 |
| 200925 | PROFILO AUTOADESIVO 20 X 1,5 |
| 200957 | GUARNIZIONE PER GUIDE 180642 |
| 200964 | GUARN.618X14 SP.3 GOMMA EPDM |
| 260113 | VITE TE 8X20 INOX A2 UNI 5739 |
| 260219 | VITE TCP 6X35 INOX A2 UNI 6107 |
| 260224 | VITE INOX "TB"-6X15- |
| 260329 | VITE M5X12 SPEC.ZIGR.SOTTOTEST |
| 260404 | DADI TORNITI INOX"M6"UNI-5588 |
| 260504 | RONDEL.PIANE D6 INOX UNI 6592 |
| 260505 | RONDEL.PIANE D8 INOX UNI 6592 |
| 260512 | RONDEL.GROWER D6 INOX UNI 1751 |
| 260513 | RONDEL.GROW.D8 INOX UNI 1751 |
| 260538 | ROND.PIANA D6 UNI5693-MT A2 |
| 260543 | ROND. ONDULATA D.6 INOX SPEC. |
| 320534 | PARTE INFERIORE TELAIO C 2001 |
| 332424 | SQUADRETTA SOST.TUBO PRESS.C |
| 342258 | VASCA (PIANA) STAMPATA C'2001 |
| 342497 | CAPOT C ANNO 2001 |
| 342498 | CAPOT COIB. PER SERIE C 2001 |
| 350796 | SQUADR.SOSTEGNO RELE C |
| 351421 | PANNELLO LATERAL.SX C ANNO2001 |
| 351422 | PANNELLO LATERAL.DX C ANNO2001 |
| 351767 | FASCIA FRONTALE C "NEUTRA" |
| 351870 | PANNELLO FR.LC 2004 STANDARD |
| 361069 | POSTERIORE TELAIO C ANNO 2001 |
| 390182 | PANNELLO POSTERIORE C ANNO2001 |
| 440211 | PIEDINO PER TUBO QUADRO40x40x1 |
| 530238 | PORTACESTELLI IN TOND. C'2001' |

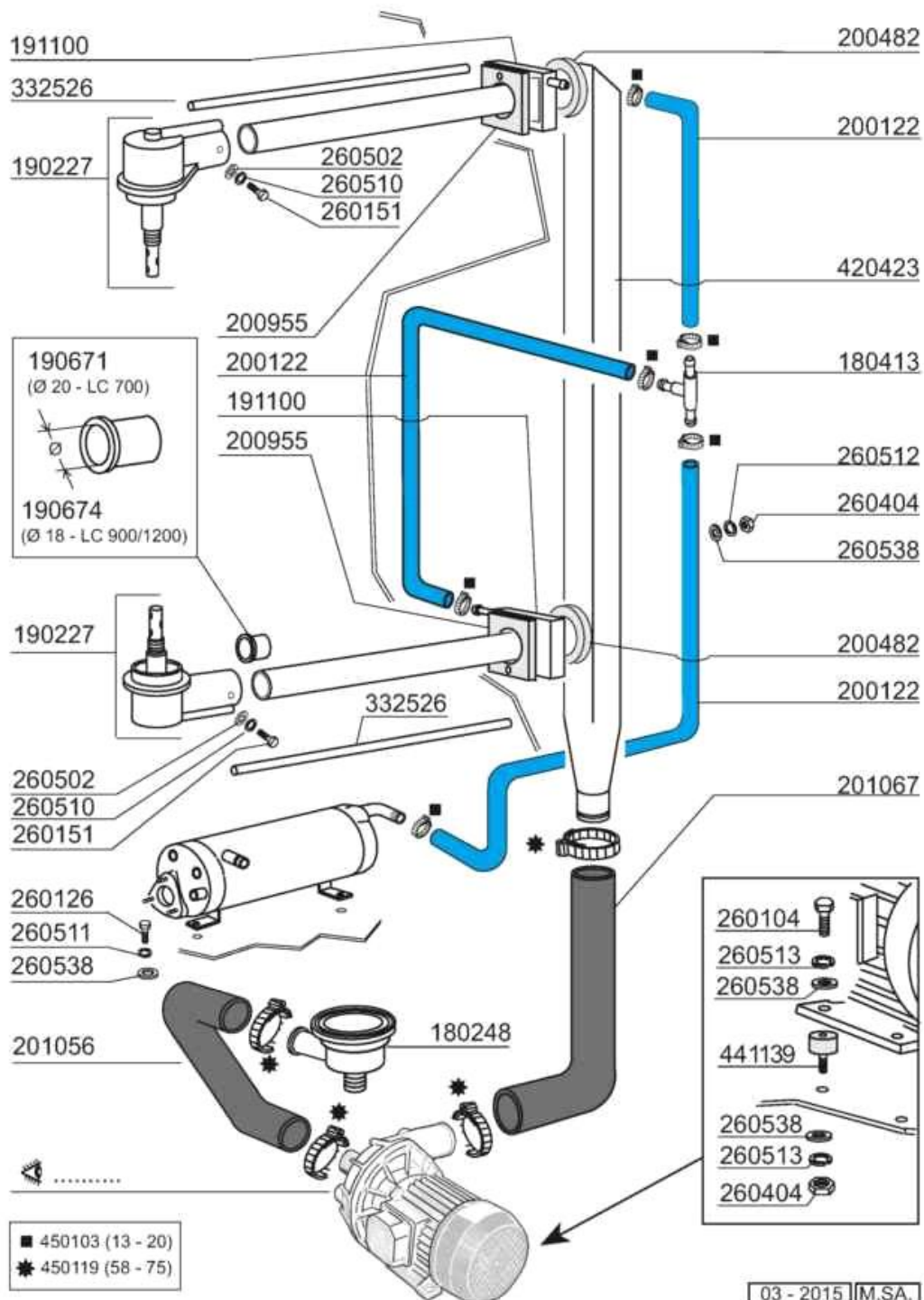


04 - 2005 | S. AG.

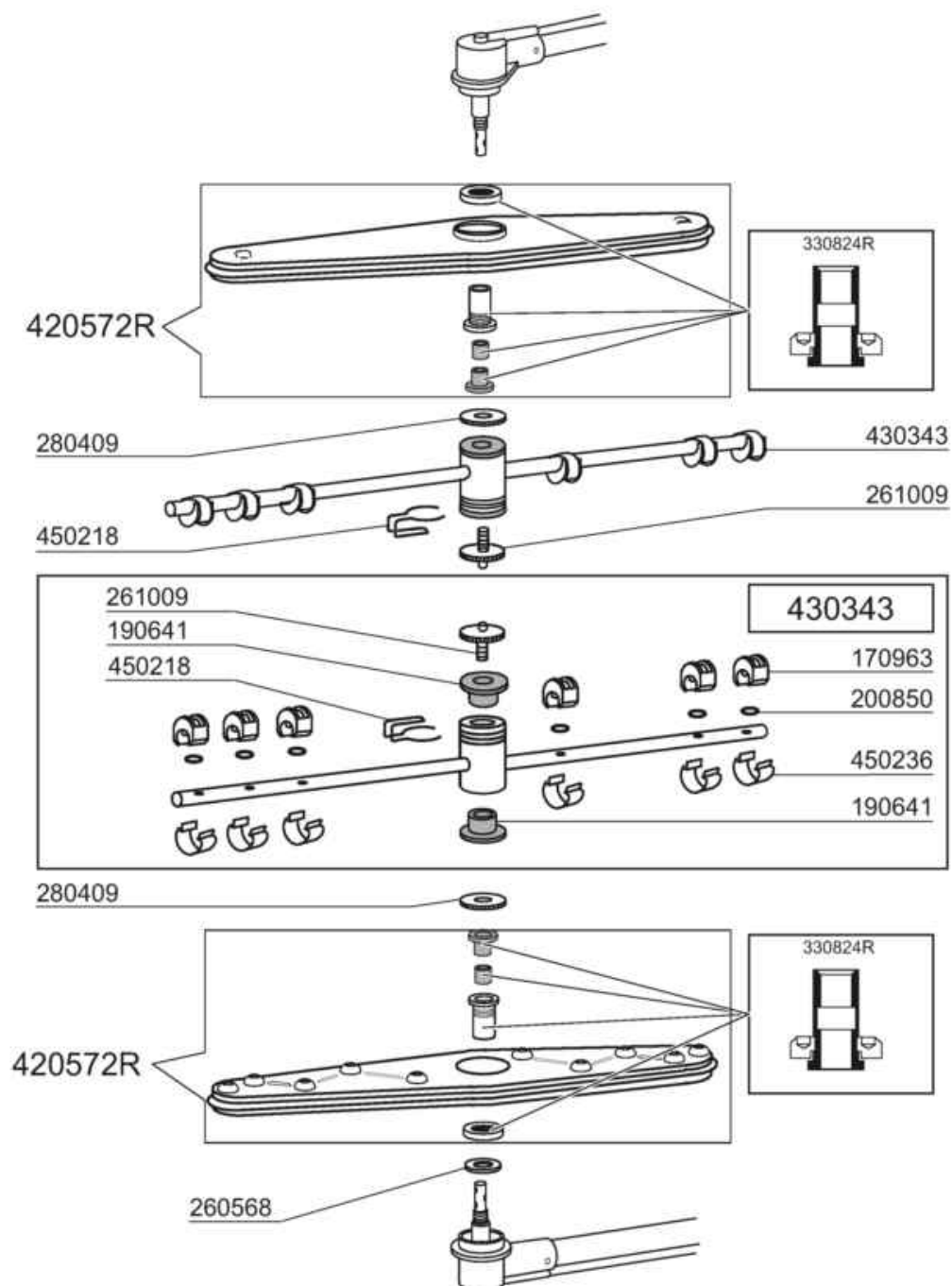
| Codice | Descrizione |
|--------|--------------------------------|
| 110226 | RES.FL.3000W.230/400V |
| 110361 | RES.FL.2200W.230V |
| 130632 | PRESSOST.1.LIV.75-45 |
| 160201 | CODOLO DIR.SCARICO VASCA |
| 160788 | TAPPO PLAST.CON FIL.M10-BHC |
| 160789 | DADO X TAPPO PLASTICA FIL.M10 |
| 161123 | COPRIRESISTENZA H 42(BASSO) |
| 161310 | TRAPPOLA ARIA BR BC C (161324) |
| 161320 | TUBO PER TRAPPOLA ARIA C2001 |
| 180102 | GHIERA 1"1/2 PILETTA F-C75 |
| 180248 | VASC.ASP.POMPA E SCAR. C 2001 |
| 180249 | GHIERA FISS.VASCETTA(180248) |
| 180729 | TROPPOPIENO C VASCA PIANA 2001 |
| 180818 | FILTRO ASPIRAZIONE FC/LC 2001 |
| 200412 | GUARNIZ.CODULO 45X33X3 |
| 200721 | TUBO SCAR.28X35 MT.3 DIRITTO |
| 200807 | GUARNIZIONE OR 109X4 NBR70 |
| 200815 | GUARN.OR 6X56X68 |
| 200870 | GUARNIZ.PIATTA 18X10X2 HV25266 |
| 200927 | GUARNIZ.TRAPP.PRESS.C95-155 |
| 200950 | GUARNIZ.A LABBRO VITON DE175 |
| 260404 | DADI TORNITI INOX"M6"UNI-5588 |
| 260512 | RONDEL.GROWER D6 INOX UNI 1751 |
| 260701 | VITE AUT.3,5X9,5 INOX DIN 7971 |
| 270101 | CONTROD.1/2" ES.30 SP.7 INOX |
| 270121 | CONTROD.INOX TRAP.PRES.AC-C |
| 323496 | TRAV.SUPP.FILTRI LC ANNO 2001 |
| 332085 | MICROFILTRO LC ANNO 2001 |
| 332090 | FILTRO VASCA DX C 2001 |
| 332091 | FILTRO VASCA SX C 2001 |
| 342258 | VASCA (PIANA) STAMPATA C'2001 |
| 350774 | SQUADRET.PRES.SNL-C75/95/155 |
| 351826 | SUPPORTO MULTIUSO |
| 450107 | FASCETTA FE ZN.38-50 H=12,2 |
| 450125 | FASCETTA A DUE FILI D.10,4X9,8 |
| 450137 | ATTACCO A COLLARE C/BASE 31900 |
| 450143 | FASCETTA A 2 FILI D.39,7X37,7 |
| 450516 | GUAINA TERMOST.INOX 2 TUBI |
| 460502 | GUARN. 30X21X2 KLINGER |



| Codice | Descrizione |
|--------|--------------------------------|
| 120348 | REED (N.O.) SENZA TRIAC |
| 120364 | MICRO CON LEVA LC |
| 150841 | PASSACAVO A MEMBRANA DG36 |
| 160737 | TAPPO A SCATTO "HEYCO"D.34,9 |
| 160804 | GUARNIZIONE DUBO D. 6 |
| 190149 | BLOCCHETTO PERNO MANIGL.C |
| 190607 | BUSSOLA AGGANCIO MOLLE C-G |
| 191013 | SNODO MANIGL. C75-C140-C155 |
| 191014 | FLANGIA XSNODO MANIGL.C70-C155 |
| 250206 | GRANI A2 C/ES.INC.D.6 UNI 5929 |
| 260104 | VITE TE 6X16 INOX A2 UNI 5739 |
| 260105 | VITE TE 6X20 INOX A2 UNI 5739 |
| 260202 | VITE TCP 3X16 INOX A2 UNI6107 |
| 260219 | VITE TCP 6X35 INOX A2 UNI 6107 |
| 260228 | VITE INOX "TB"-6X40- |
| 260230 | VITE TCP 4X40 INOX A2 UNI 6107 |
| 260402 | DADI STAMP. D4 INOX UNI 5588 |
| 260404 | DADI TORNITI INOX"M6"UNI-5588 |
| 260406 | DADO INOX A2"ZINC."M8"UNI 5587 |
| 260415 | DADO AUTOBL."M8"304 BASSO STAM |
| 260416 | DADI"M6"INOX A2 "5587"Stampati |
| 260418 | DADO AUTOBLOC."M4"INOX BASSO |
| 260502 | RONDEL.PIANE D4 INOX UNI 6592 |
| 260505 | RONDEL.PIANE D8 INOX UNI 6592 |
| 260510 | RONDEL.GROW.D4 INOX UNI 1751 |
| 260512 | RONDEL.GROWER D6 INOX UNI 1751 |
| 260530 | RONDELLA STAMPATA 7X22X2 INOX |
| 260534 | RONDELLA STAMPATA 16X4X1 INOX |
| 260537 | RONDEL.INOX D.13X20X0,8-6592 |
| 324016 | PIASTRA SUPP.MICRO COD.120348 |
| 330239 | TIRANTE PER MOLLE PER C2001 |
| 331037 | MANIGLIONE C/LC ANNO 2001 |
| 340493 | PERNO ROTOLAM.C1000/1300-LC |
| 361069 | POSTERIORE TELAIO C ANNO 2001 |
| 391316 | MOLLA MAN. C-LC |

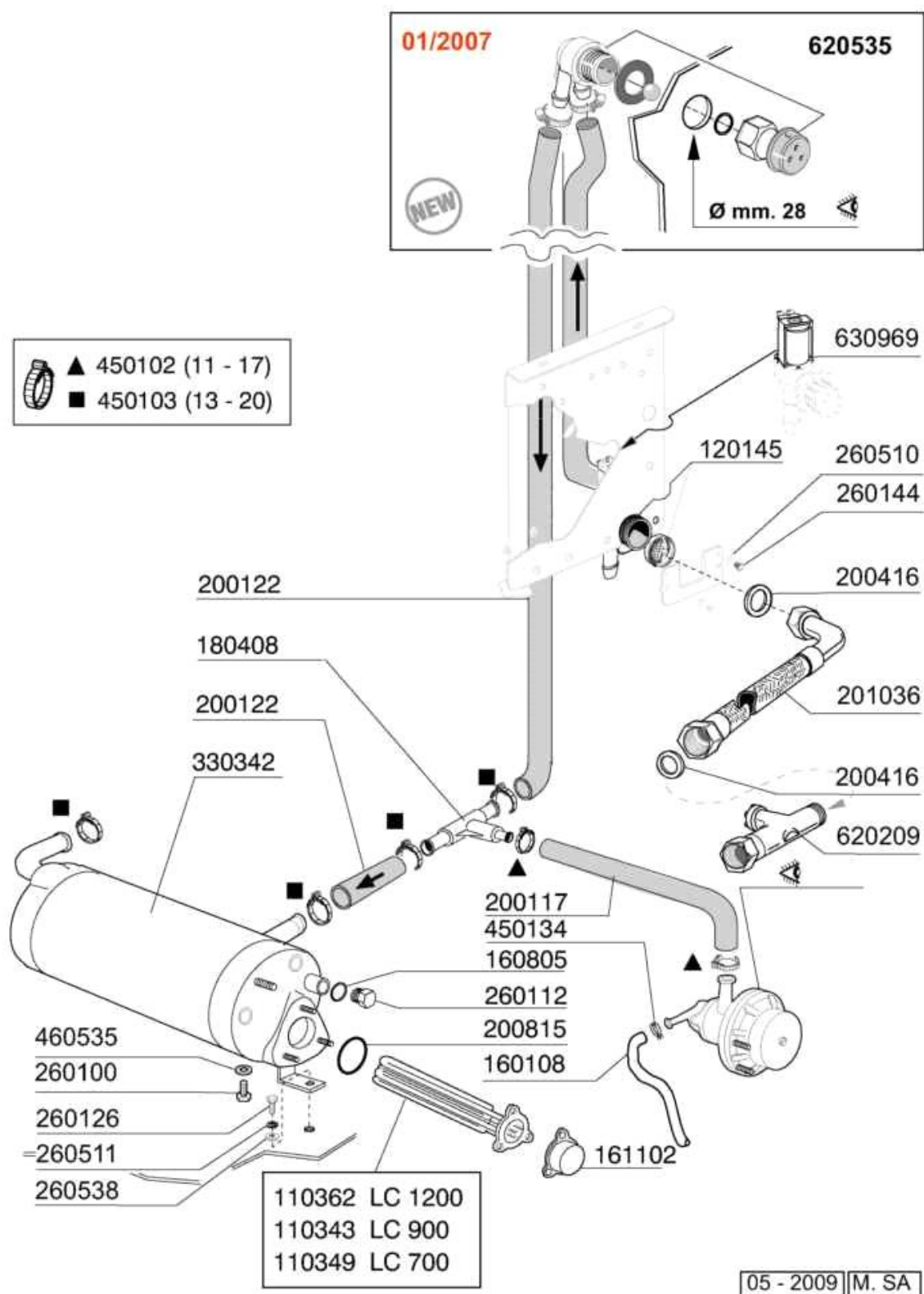


| Codice | Descrizione |
|--------|--------------------------------|
| 180248 | VASC.ASP.POMPA E SCAR. C 2001 |
| 180413 | PORTAGOMMA A "T" D 11,5 |
| 190227 | PIPA SUPP.MULINELLO C/LC 2001 |
| 190671 | BUSS.RID.PP C1000/1300/LC700 |
| 190674 | BUSS.DI RIDUZ.PP LC900/LC1200 |
| 191100 | BLOCCH.COLL.RISCIACQ. C\LC2001 |
| 200122 | TUBO GOMMA 11X19 CASER/15 BLU |
| 200482 | GUARNIZIONE 60X54 RAMPA C140 |
| 200955 | GUARNIZIONE BLOC.RISC.C2001 |
| 201056 | TUBO ASP.POMPA.LAV.LC ANNO2001 |
| 201067 | TUBO MANDATA POMPA LAV.LC2001 |
| 260104 | VITE TE 6X16 INOX A2 UNI 5739 |
| 260126 | VITE TE 5X12 INOX A2 UNI 5739 |
| 260151 | VITE TE M4X12 INOX A2 UNI5739 |
| 260404 | DADI TORNITI INOX"M6"UNI-5588 |
| 260502 | RONDEL.PIANE D4 INOX UNI 6592 |
| 260510 | RONDEL.GROW.D4 INOX UNI 1751 |
| 260511 | RONDEL.GROW.D5 INOX UNI 1751 |
| 260512 | RONDEL.GROWER D6 INOX UNI 1751 |
| 260513 | RONDEL.GROW.D8 INOX UNI 1751 |
| 260538 | ROND.PIANA D6 UNI5693-MT A2 |
| 332526 | TUBO RISCIAQUO DIAM.8 C 2001 |
| 420423 | RAMPA LAVAGGIO C/LC ANNO2001 |
| 441139 | ANTIVIBRANTE 25X20 M6 L18 60SH |
| 450103 | FASCETTA FE ZN.13-20 H=9 |
| 450119 | FASCETTA FE ZN.58-75 H=12,2 |

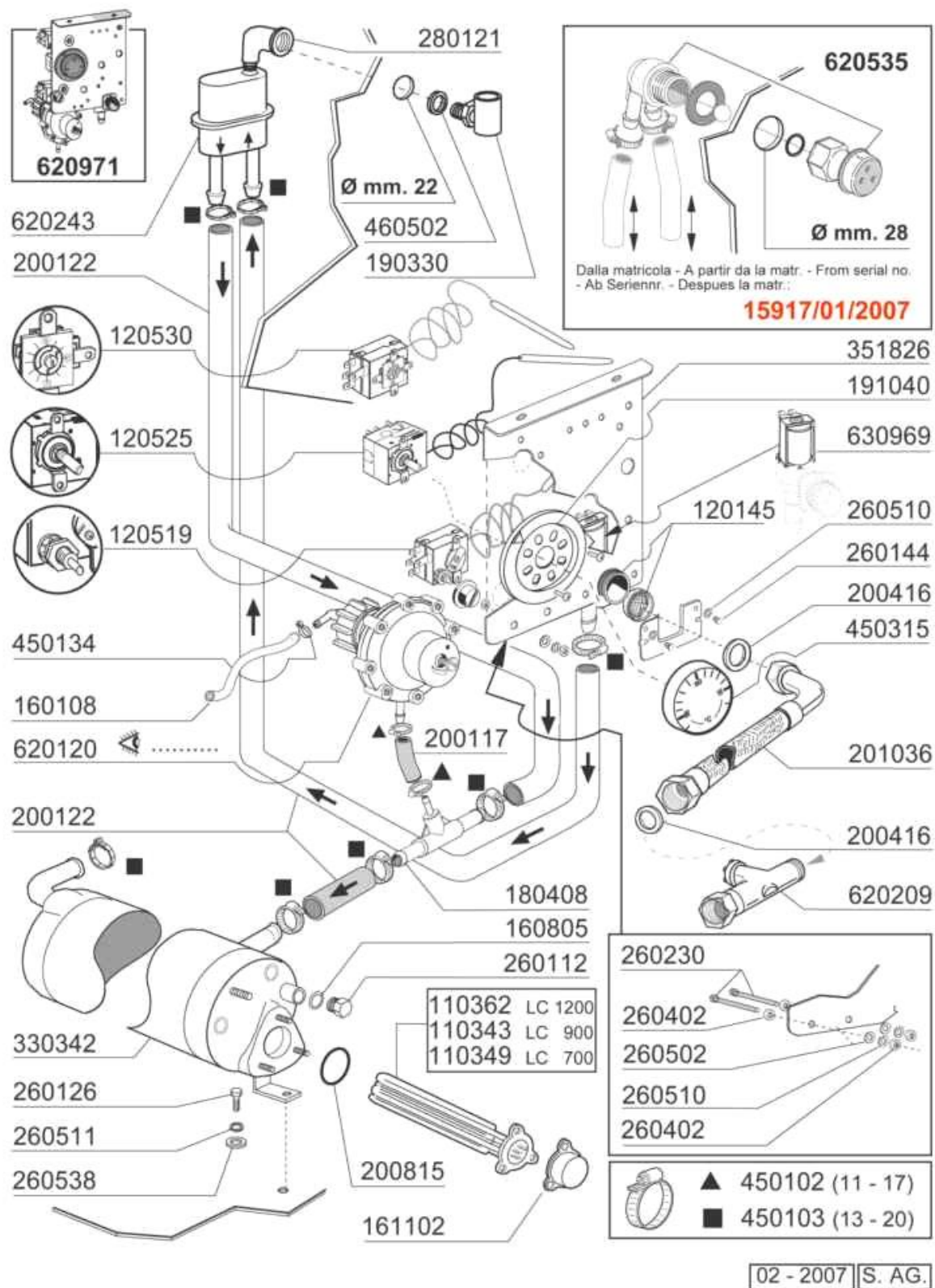


02 - 2016 MS

| Codice | Descrizione |
|---------|--------------------------------|
| 170963 | UGELLO RISC.A FASCETTA X FC |
| 190641 | BUSSOLA MULIN.RISC.C V.S. |
| 200850 | GUARN. OR 1 X 7 X 9 |
| 260568 | ROND.PIANA D28x21x1 SPECIALE |
| 261009 | VITE FISS. MULINELLO TUB.ACC. |
| 280409 | GHIERA BLOC.MUL.C1000/1300 LC |
| 330824R | KIT MOZZO PER MULINELLO 420572 |
| 420572R | MULIN.LAV.INOX PIATTO LC RIC. |
| 430343 | MUL.RISC.UG.PL.LC700/900/1200 |
| 450218 | MOLLA FISS.VITE MULIN.C95-155 |
| 450236 | MOLLA X UGELLO RISC.170963 FC |



| Codice | Descrizione |
|--------|--------------------------------|
| 110343 | RES.FL.8000W.230/400V SP2845 |
| 110349 | RES.FL.6000W.230/400V |
| 110362 | RES.FL.9000W.230/400V |
| 120145 | ELETTR.1 VIA F/FC/B 12 LT/N |
| 160108 | TUBO FL.CRIST D.8X5 PVC |
| 160805 | GUARNIZIONE DUBO D. 8 |
| 161102 | COPRIRESISTENZA H 50(ALTO) |
| 180408 | PORTAG.T DOSAT.ATT.CENTR.RID. |
| 200117 | TUBO GOMMA 8X15 INDUSTRIA 10 |
| 200122 | TUBO GOMMA 11X19 CASER/15 BLU |
| 200416 | GUARNIZ.NEOP.D.3/4"-TUBO C.V. |
| 200815 | GUARN.OR 6X56X68 |
| 201036 | TUBO CARICO CURVO TR.NYLON MT2 |
| 260100 | VITE TE 6X8 INOX A2 (260102) |
| 260112 | VITE TE 8X16 INOX A2 UNI 5739 |
| 260126 | VITE TE 5X12 INOX A2 UNI 5739 |
| 260144 | VITE TE 4X6 INOX A2 UNI 5739 |
| 260510 | RONDEL.GROW.D4 INOX UNI 1751 |
| 260511 | RONDEL.GROW.D5 INOX UNI 1751 |
| 260538 | ROND.PIANA D6 UNI5693-MT A2 |
| 330342 | BOILER C1000/1300-FC-LC |
| 450102 | FASCETTA FE ZN 11-17 H=9 |
| 450103 | FASCETTA FE ZN.13-20 H=9 |
| 450134 | FASCET. A DUE FILI D.9,3/8,8 |
| 460535 | GUARN.X TAPPO SCAR.BOILER BHC? |
| 620209 | FILTRO COMPL.RACC.IMPURITA' |
| 620535 | VALVOLA ANTIVUOTO COMPATTA |
| 630969 | BOBINA Elett.4397 220/50HZ |



| Codice | Descrizione |
|--------|--------------------------------|
| 110343 | RES.FL.8000W.230/400V SP2845 |
| 110349 | RES.FL.6000W.230/400V |
| 110362 | RES.FL.9000W.230/400V |
| 120145 | ELETTR.1 VIA F/FC/B 12 LT/N |
| 120519 | TERM.95-125?SIC.LS1 |
| 120525 | TERMOST.2 TEMP.TRZ |
| 120530 | TERM.0-90? REGOL.CACCIIVITE |
| 160108 | TUBO FL.CRIST D.8X5 PVC |
| 160805 | GUARNIZIONE DUBO D. 8 |
| 161102 | COPRIRESISTENZA H 50(ALTO) |
| 180408 | PORTAG.T DOSAT.ATT.CENTR.RID. |
| 190330 | TEE PARASPRUZZI VALVOLA ANTIV. |
| 191040 | MASCHERINA MANOP.TERMOSTATO |
| 200117 | TUBO GOMMA 8X15 INDUSTRIA 10 |
| 200122 | TUBO GOMMA 11X19 CASER/15 BLU |
| 200416 | GUARNIZ.NEOP.D.3/4"-TUBO C.V. |
| 200815 | GUARN.OR 6X56X68 |
| 201036 | TUBO CARICO CURVO TR.NYLON MT2 |
| 260112 | VITE TE 8X16 INOX A2 UNI 5739 |
| 260126 | VITE TE 5X12 INOX A2 UNI 5739 |
| 260144 | VITE TE 4X6 INOX A2 UNI 5739 |
| 260230 | VITE TCP 4X40 INOX A2 UNI 6107 |
| 260402 | DADI STAMP. D4 INOX UNI 5588 |
| 260502 | RONDEL.PIANE D4 INOX UNI 6592 |
| 260510 | RONDEL.GROW.D4 INOX UNI 1751 |
| 260511 | RONDEL.GROW.D5 INOX UNI 1751 |
| 260538 | ROND.PIANA D6 UNI5693-MT A2 |
| 280121 | CURVA X VALVOLA ANTIVUOTO |
| 330342 | BOILER C1000/1300-FC-LC |
| 351826 | SUPPORTO MULTIUSO |
| 450102 | FASCETTA FE ZN 11-17 H=9 |
| 450103 | FASCETTA FE ZN.13-20 H=9 |
| 450134 | FASCET. A DUE FILI D.9,3/8,8 |
| 450315 | MANOP.TERM.90?COMENDA 109951 |
| 460502 | GUARN. 30X21X2 KLINGER |
| 620120 | DOSATORE BRILLANTANTE |
| 620209 | FILTRO COMPL.RACC.IMPURITA' |
| 620243 | VALVOLA ANTIVUOTO (620535) |
| 620535 | VALVOLA ANTIVUOTO COMPATTA |
| 620971 | -ASSIEME COMPONENTI LC 2004 |
| 630969 | BOBINA Elett.4397 220/50HZ |

Fino alla Matricola - Up to serial number
jusqu'à la matr. - Bis Seriennr.
Hasta la matr.
DA002913/03/2013

630330

630252

630411

630501


632501 50 HZ

632502 60 HZ

630138


630254

631202
16 µF



LC 700

100801
220/240 V
50 Hz - HP 1
Kw 0,75 (5223)



630306

630252

630411

630501

631653 50 HZ


631654 60 HZ

630138

630253

LC 900

100797
230/400 V
50Hz - HP 1.5
Kw 1,1 (5233)



630306

630252

630411

630501

631618 50 HZ

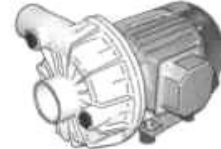
631647 60 HZ

630138

630253

LC 1200

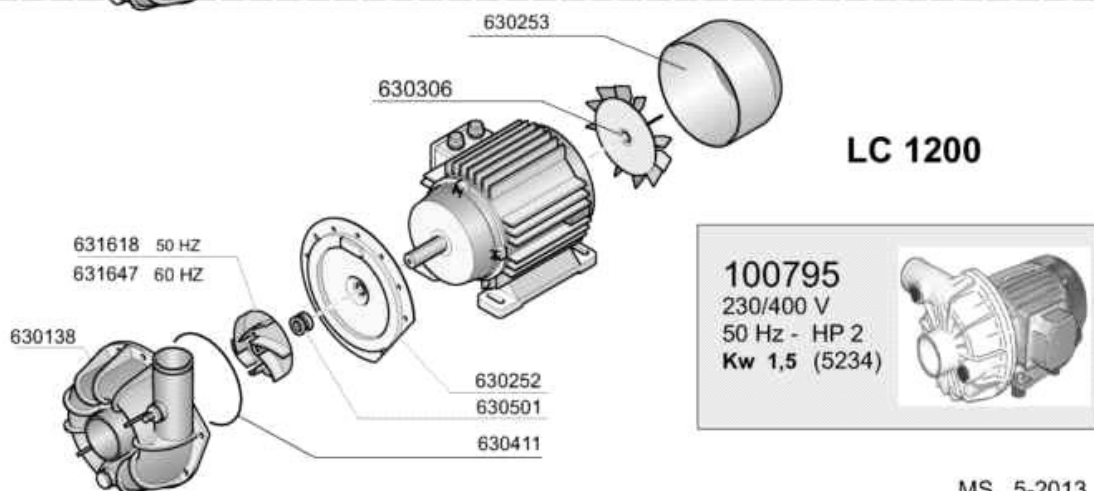
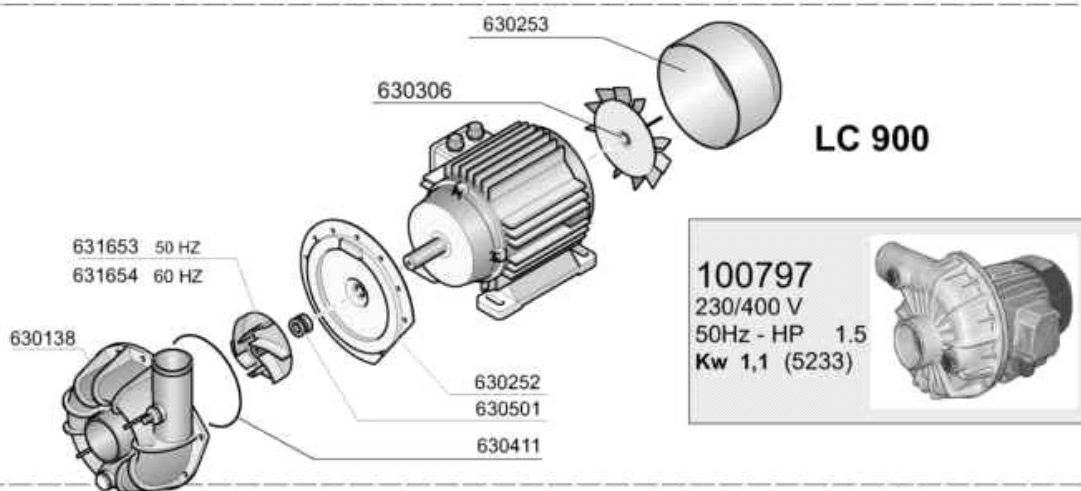
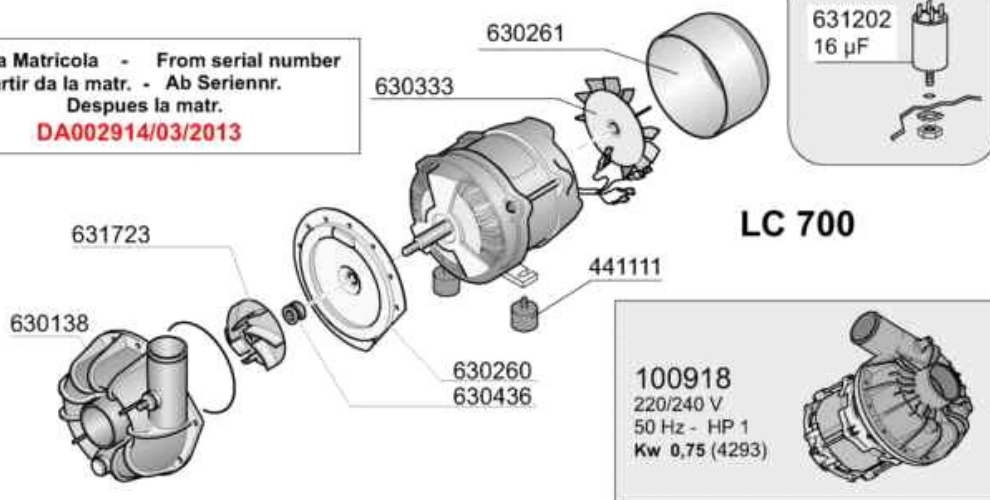
100795
230/400 V
50 Hz - HP 2
Kw 1,5 (5234)



05 - 2013
MS

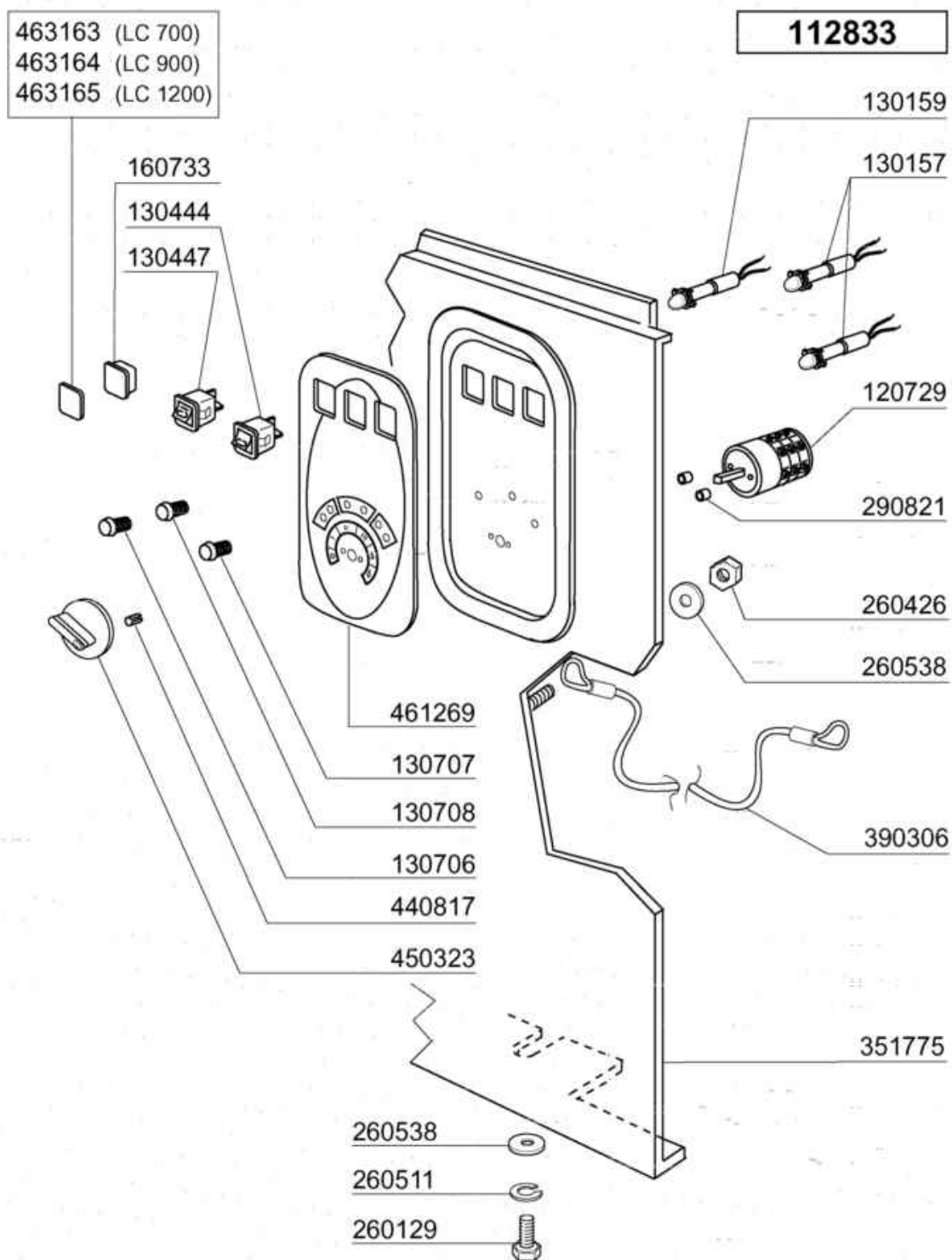
| Codice | Descrizione |
|--------|--------------------------------|
| 100795 | POMPA.HP2 220-240/380-415V50Hz |
| 100797 | POMPA.HP.1,5.380V.50HZ |
| 100801 | POMPA HP 1 230V/1 5223.2350 |
| 630138 | CORPO POMPA F.. 4264303 |
| 630252 | FLANGIA F.. 5234320 PER POMPA |
| 630253 | COPRIVENTOLA F.. 2454041 |
| 630254 | COPRIVENTOLA F.. 4323041 |
| 630306 | VENTOLE RAFF.HP.2-3 F.1204-44 |
| 630330 | VENTOLA DI RAFFR. F.. 2423042 |
| 630411 | GUARN.CORPO POMPA FI HP 2-2,7 |
| 630501 | TENUTA FRONT.POMPA HP 2-3-3,2 |
| 631202 | CONDENSATORE 16 MF 450V |
| 631618 | GIRANTE FIR 1204315IX/118 |
| 631647 | -GIR.HP2 D.100-60HZ-1204/5 F. |
| 631653 | GIR.HP1,5 D.110/50HZ-1241 F. |
| 631654 | GIRANTE D.96-1,5HP 50HZ 1241 |
| 632501 | GIRANTE FIR 5223 1HP 50HZ |
| 632502 | GIRANTE FIR 5223 1 HP 60HZ |

Dalla Matricola - From serial number
A partir da la matr. - Ab Seriennr.
Despues la matr.
DA002914/03/2013



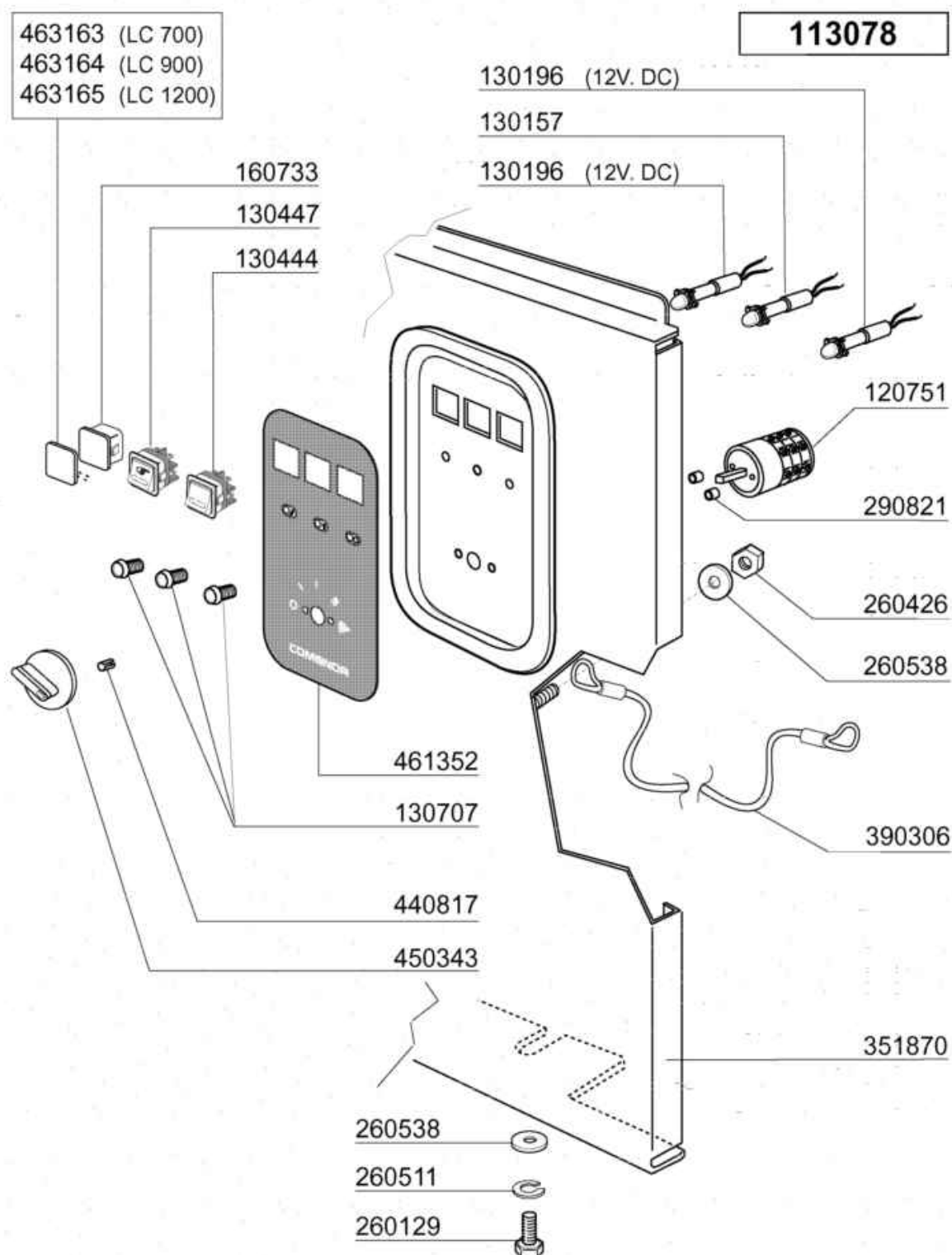
MS. 5-2013

| Codice | Descrizione |
|--------|--------------------------------|
| 100795 | POMPA.HP2 220-240/380-415V50Hz |
| 100797 | POMPA.HP.1,5.380V.50HZ |
| 100918 | POMPA HP 1 230V/1 4293-CAM2071 |
| 441111 | ANTIVIBR.TE 25X25XM6 |
| 630138 | CORPO POMPA F.. 4264303 |
| 630252 | FLANGIA F.. 5234320 PER POMPA |
| 630253 | COPRIVENTOLA F.. 2454041 |
| 630260 | SCUDO+FLANGIA(PP-HOST.-G3-N01) |
| 630261 | COPERCHIO VENTOLA FIR 4293 |
| 630306 | VENTOLE RAFF.HP.2-3 F.1204-44 |
| 630333 | VENTOLA RAFFR.FIR POMPA 4293 |
| 630411 | GUARN.CORPO POMPA FI HP 2-2,7 |
| 630436 | GUARNIZIONE OR FIR 4293 |
| 630501 | TENUTA FRONT.POMPA HP 2-3-3,2 |
| 631202 | CONDENSATORE 16 MF 450V |
| 631618 | GIRANTE FIR 1204315IX/118 |
| 631647 | -GIR.HP2 D.100-60HZ-1204/5 F. |
| 631653 | GIR.HP1,5 D.110/50HZ-1241 F. |
| 631654 | GIRANTE D.96-1,5HP 50HZ 1241 |
| 631723 | GIRANTE 50Hz FIR-POMPA 4293 |



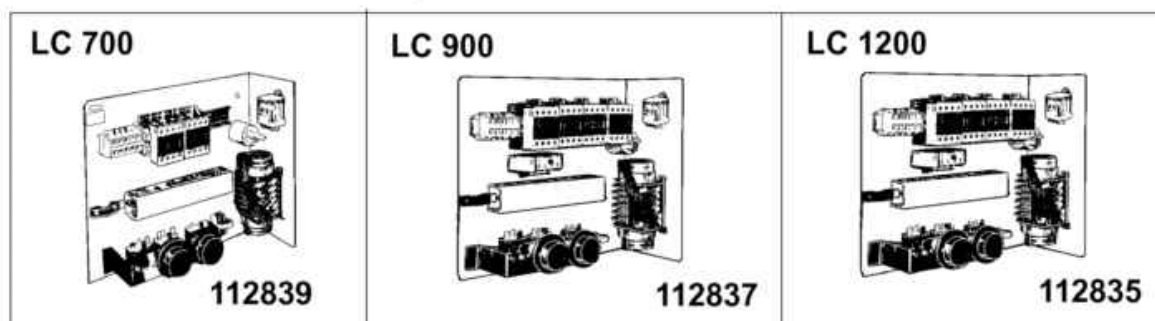
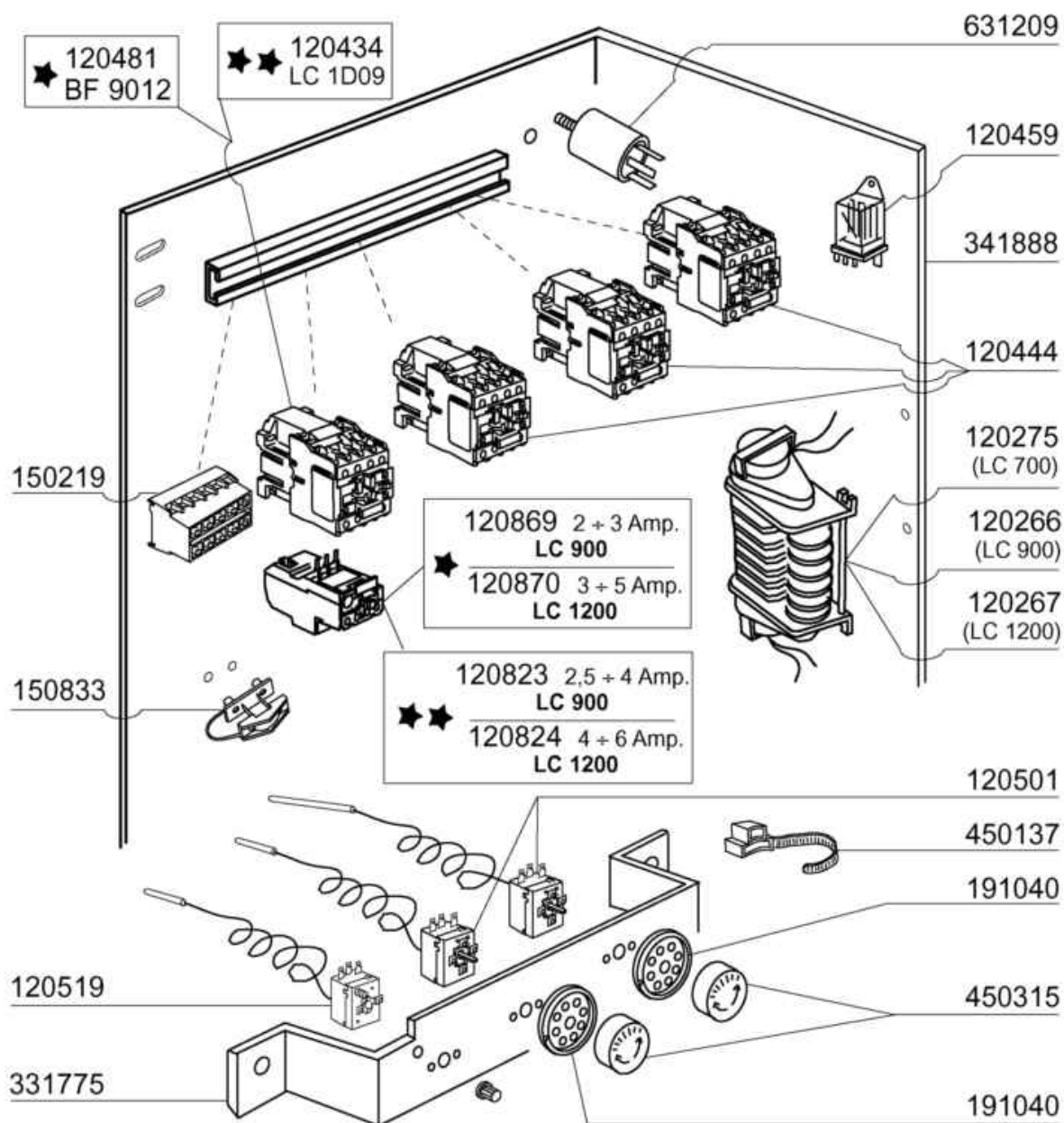
05 - 2004 S. AG.

| Codice | Descrizione |
|--------|--------------------------------|
| 112833 | PANN.COM."LC" COMENDA |
| 120729 | INTERR.OTTAPOLARE 16A 5 POS. |
| 130157 | LAMPADA A LED VERDE 250V |
| 130159 | LAMPADA NEON 220V ARANCIO |
| 130444 | PULSANTE AVVIO CICLO MACCHINA |
| 130447 | DEVIATORE NON LUMINOSO |
| 130706 | GEMMA ARANC.X LAMPADA A LED |
| 130707 | GEMMA TRASP.X LAMPADA A LED |
| 130708 | GEMMA GIALLA xLAMPADA A LED |
| 160733 | TAPPO CHIUSURA FORO LAMPADA |
| 260129 | VITE TE 5X20 INOX A2 UNI 5739 |
| 260426 | DADI ESAG.CIECHI INOX "M6" |
| 260511 | RONDEL.GROW.D5 INOX UNI 1751 |
| 260538 | ROND.PIANA D6 UNI5693-MT A2 |
| 290821 | DISTANZIALE PER INTERRUTTORE |
| 351775 | PANNELLO FRONT.COMENDA LC2001 |
| 390306 | CORDA FERMO-IMPIANTO F-C-AC |
| 440817 | ANELLINO ELAST.LSCB/1853/17/0 |
| 450323 | MANOPOLA GRIGIA IND.GR.CHIARO |
| 461269 | TARGA.COMANDI.POLICARBONATO LC |
| 463163 | DOX SYSTEM LC700 |
| 463164 | DOX SYSTEM LC900 |
| 463165 | DOX SYSTEM LC1200 |



04- 2005 S. AG.

| Codice | Descrizione |
|--------|-------------------------------|
| 113078 | PANN.COM.LC '04 |
| 120751 | INTERRUTTORE QUADRI.16A 4POS. |
| 130157 | LAMPADA A LED VERDE 250V |
| 130196 | LAMPADA A LED VERDE C/FILI |
| 130444 | PULSANTE AVVIO CICLO MACCHINA |
| 130447 | DEVIATORE NON LUMINOSO |
| 130707 | GEMMA TRASP.X LAMPADA A LED |
| 160733 | TAPPO CHIUSURA FORO LAMPADA |
| 260129 | VITE TE 5X20 INOX A2 UNI 5739 |
| 260426 | DADI ESAG.CIECHI INOX "M6" |
| 260511 | RONDEL.GROW.D5 INOX UNI 1751 |
| 260538 | ROND.PIANA D6 UNI5693-MT A2 |
| 290821 | DISTANZIALE PER INTERRUTTORE |
| 351870 | PANNELLO FR.LC 2004 STANDARD |
| 390306 | CORDA FERMO-IMPIANTO F-C-AC |
| 440817 | ANELLINO ELAST.LSCB/1853/17/0 |
| 450343 | MANOPOLA BLU IND.AZZURRO |
| 461352 | TARGA.COMANDI.LC 2004 |
| 463163 | DOX SYSTEM LC700 |
| 463164 | DOX SYSTEM LC900 |
| 463165 | DOX SYSTEM LC1200 |



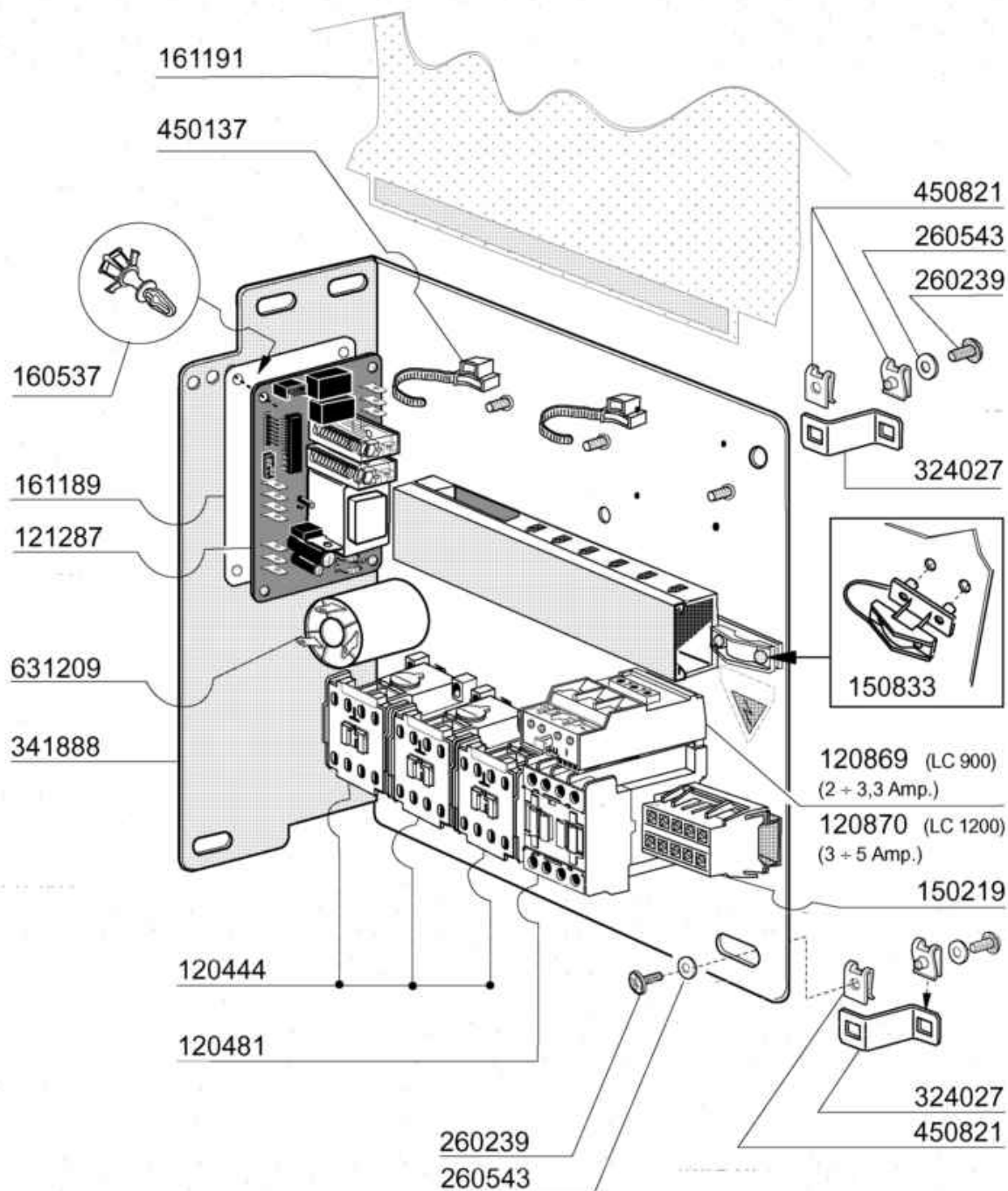
10 - 2002 S.A.G.

| Codice | Descrizione |
|--------|--------------------------------|
| 112835 | IMP.EL.LC1200 |
| 112837 | IMP.EL.LC900 |
| 112839 | IMP.EL.LC700 |
| 120266 | TIMER P25 6CAM 2M.75/120/180 |
| 120267 | TIMER 6CAM 2MOT.55/85/1(120266 |
| 120275 | TIMER 2MOT.90/120/180"(120266) |
| 120434 | TEL.9AMP 220V 50HZ LC1D09M7 |
| 120444 | CONTAT.TRIP.9A/230V BF0901A230 |
| 120459 | RELE' 16A 3 SCAMBI BOB. 220V |
| 120481 | TLR.9A-230V 50/60 (120444) |
| 120501 | TERMOSTATO 30/90? MT 1 TR/2 |
| 120519 | TERM.95-125?SIC.LS1 |
| 120823 | TERMICA 2,5/4 A LR3 D1308 |
| 120824 | TERMICA 4/6 |
| 120869 | TERMICA 2/3,3 RF380330 |
| 120870 | TERMICA 3/5 RF380500 |
| 150219 | MORSETTI 5P.(150233+2x150234) |
| 150833 | PRESSAC.EGB PA268/RO |
| 191040 | MASCHERINA MANOP.TERMOSTATO |
| 331775 | SQUADRETTA 3 TERMOST.C95/165 |
| 341888 | SUPPORTO IMP.EL. C/LC ANNO2001 |
| 450137 | ATTACCO A COLLARE C/BASE 31900 |
| 450315 | MANOP.TERM.90?COMENDA 109951 |
| 631209 | FILTRO ANTID.411.13.5001 FAST |

113080 (LC 700)

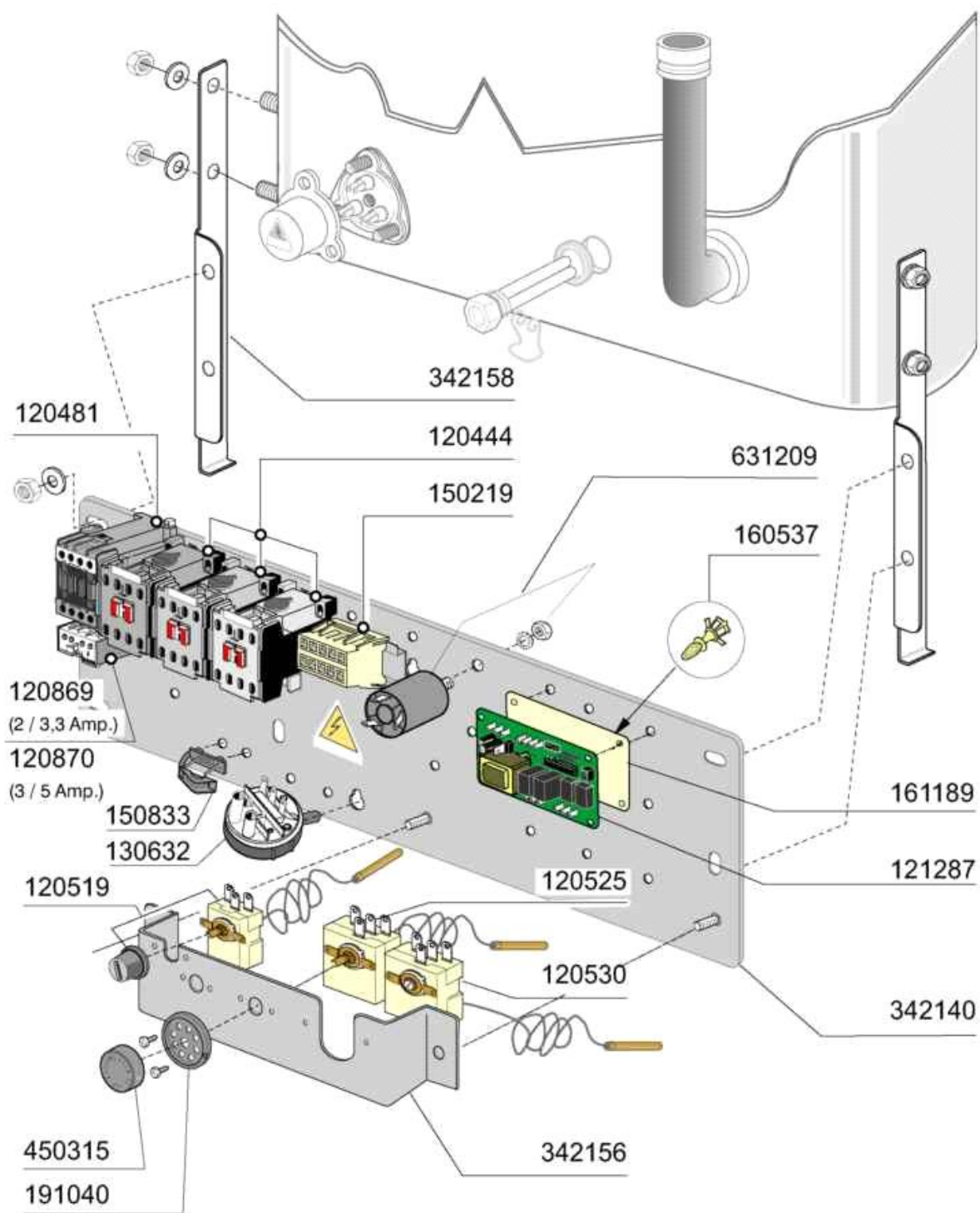
113081 (LC 900)

113082 (LC 1200)



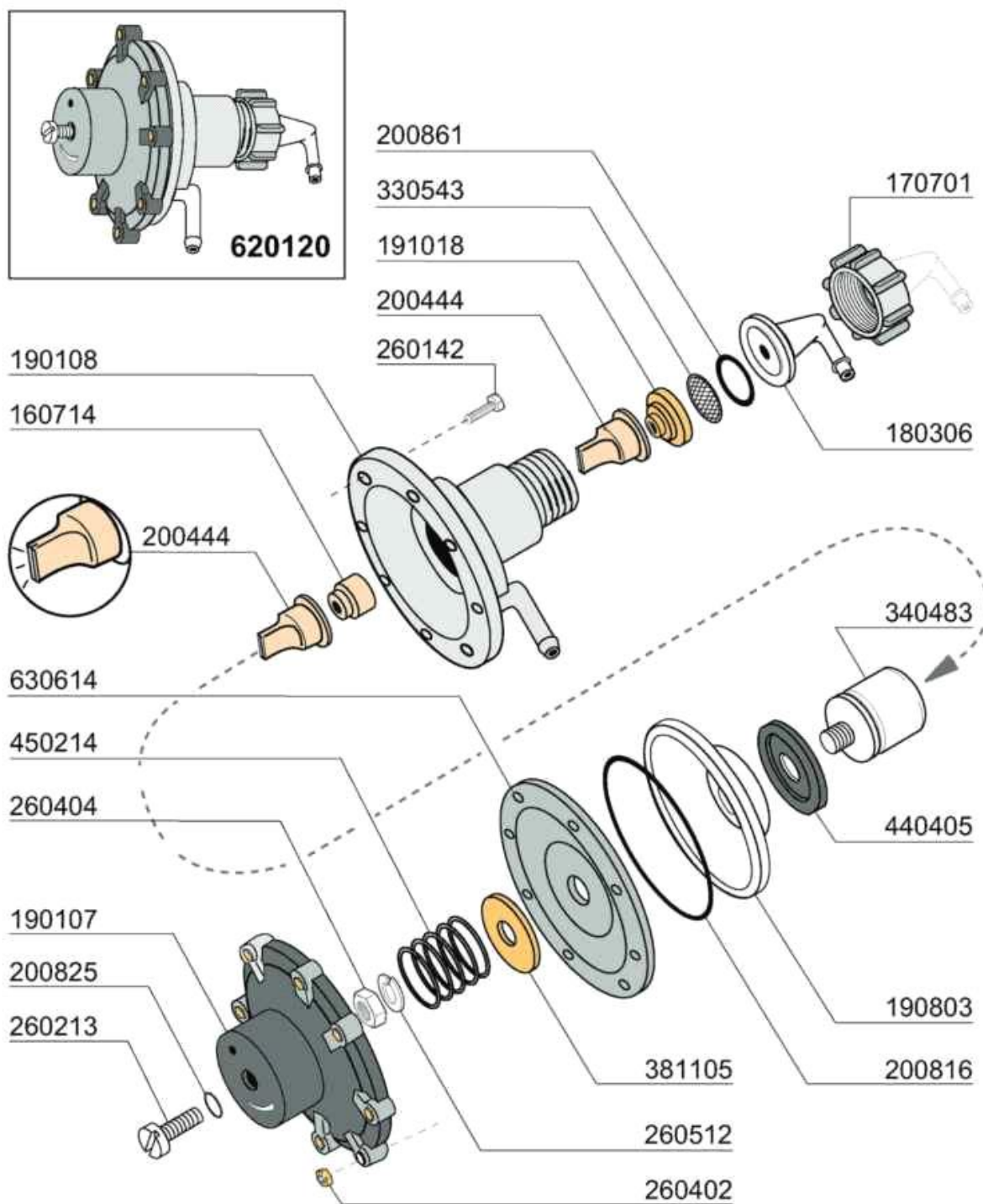
04 - 2005 S. AG.

| Codice | Descrizione |
|--------|--------------------------------|
| 113080 | -IMP.ELET.LC700 '04 (113351) |
| 113081 | IMP.EL.LC900 |
| 113082 | IMP.EL.C1301M 04 |
| 120444 | CONTAT.TRIP.9A/230V BF0901A230 |
| 120481 | TLR.9A-230V 50/60 (120444) |
| 120869 | TERMICA 2/3,3 RF380330 |
| 120870 | TERMICA 3/5 RF380500 |
| 121287 | TIMER ELT.UNI.SW UNITIMER |
| 150219 | MORSETTI 5P.(150233+2x150234) |
| 150833 | PRESSAC.EGB PA268/RO |
| 160537 | DISTANZ.X SCHEDE ELETTRONICHE |
| 161189 | PROTEZ.TIMER ELT.UNIVERSALE |
| 161191 | COPERTURA IMP.EL.C/LC ANNO2001 |
| 260239 | VITE INOX "TB"-6X20- |
| 260543 | ROND. ONDULATA D.6 INOX SPEC. |
| 324027 | SQUADR.FISS.IMP.EL. LC 2001-08 |
| 341888 | SUPPORTO IMP.EL. C/LC ANNO2001 |
| 450137 | ATTACCO A COLLARE C/BASE 31900 |
| 450821 | DADO CLIPS DOPPIO A BOTTE 5MA |
| 631209 | FILTRO ANTID.411.13.5001 FAST |



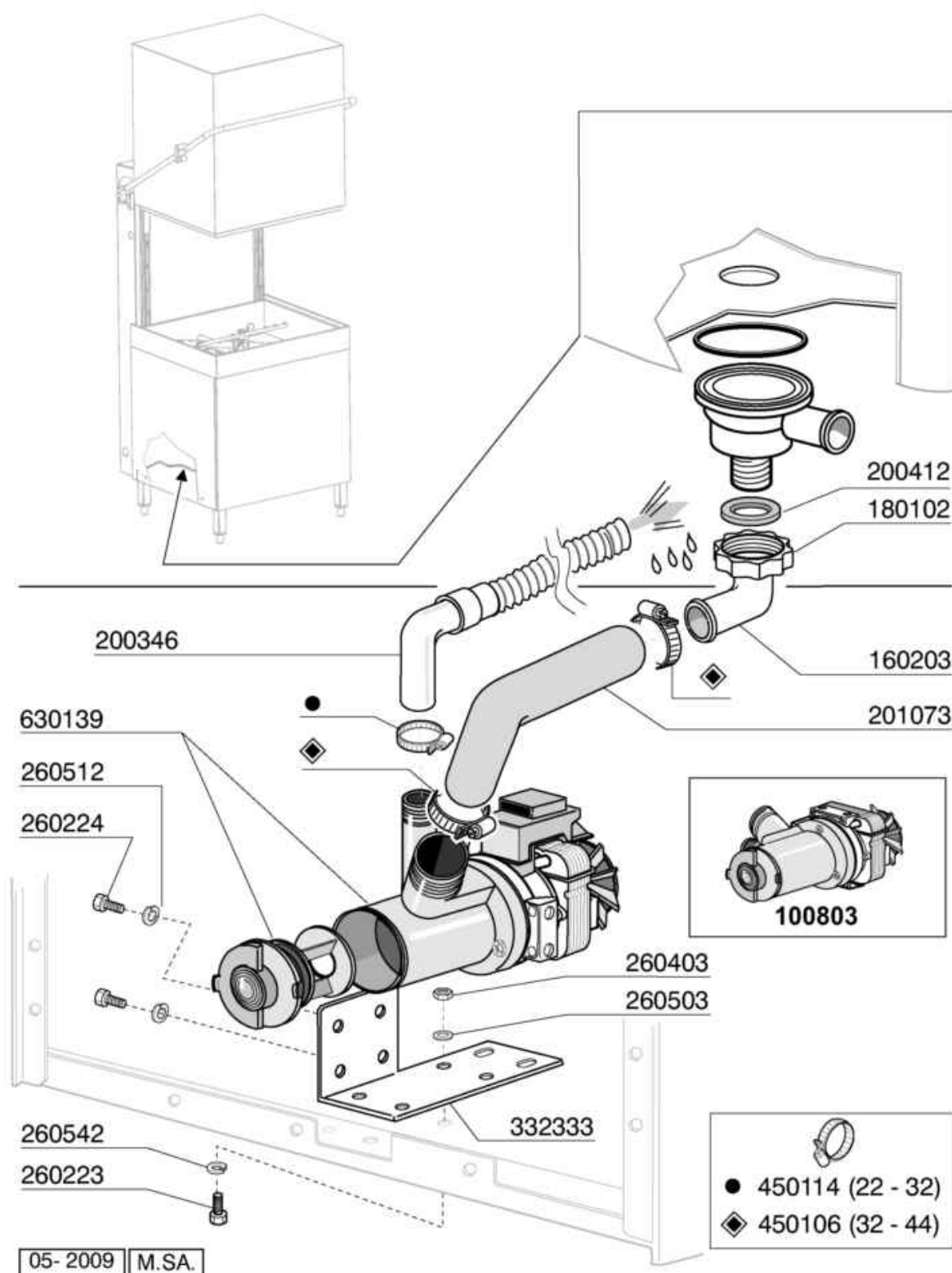
07 - 2012 M.SA.

| Codice | Descrizione |
|--------|--------------------------------|
| 120444 | CONTAT.TRIP.9A/230V BF0901A230 |
| 120481 | TLR.9A-230V 50/60 (120444) |
| 120519 | TERM.95-125?SIC.LS1 |
| 120525 | TERMOST.2 TEMP.TRZ |
| 120530 | TERM.0-90? REGOL.CACCIAVITE |
| 120869 | TERMICA 2/3,3 RF380330 |
| 120870 | TERMICA 3/5 RF380500 |
| 121287 | TIMER ELT.UNI.SW UNITIMER |
| 130632 | PRESSOST.1.LIV.75-45 |
| 150219 | MORSETTI 5P.(150233+2x150234) |
| 150833 | PRESSAC.EGB PA268/RO |
| 160537 | DISTANZ.X SCHEDE ELETTRONICHE |
| 161189 | PROTEZ.TIMER ELT.UNIVERSALE |
| 191040 | MASCHERINA MANOP.TERMOSTATO |
| 342140 | SUPP.IMP.ELETTR. LC ANNO 2008 |
| 342156 | SUPP.ANT.COLLETT.LAV.INF.AC2 |
| 342158 | SUPP.ANT.COLLETT.LAV.INF.AC2P |
| 450315 | MANOP.TERM.90?COMENDA 109951 |
| 631209 | FILTRO ANTID.411.13.5001 FAST |

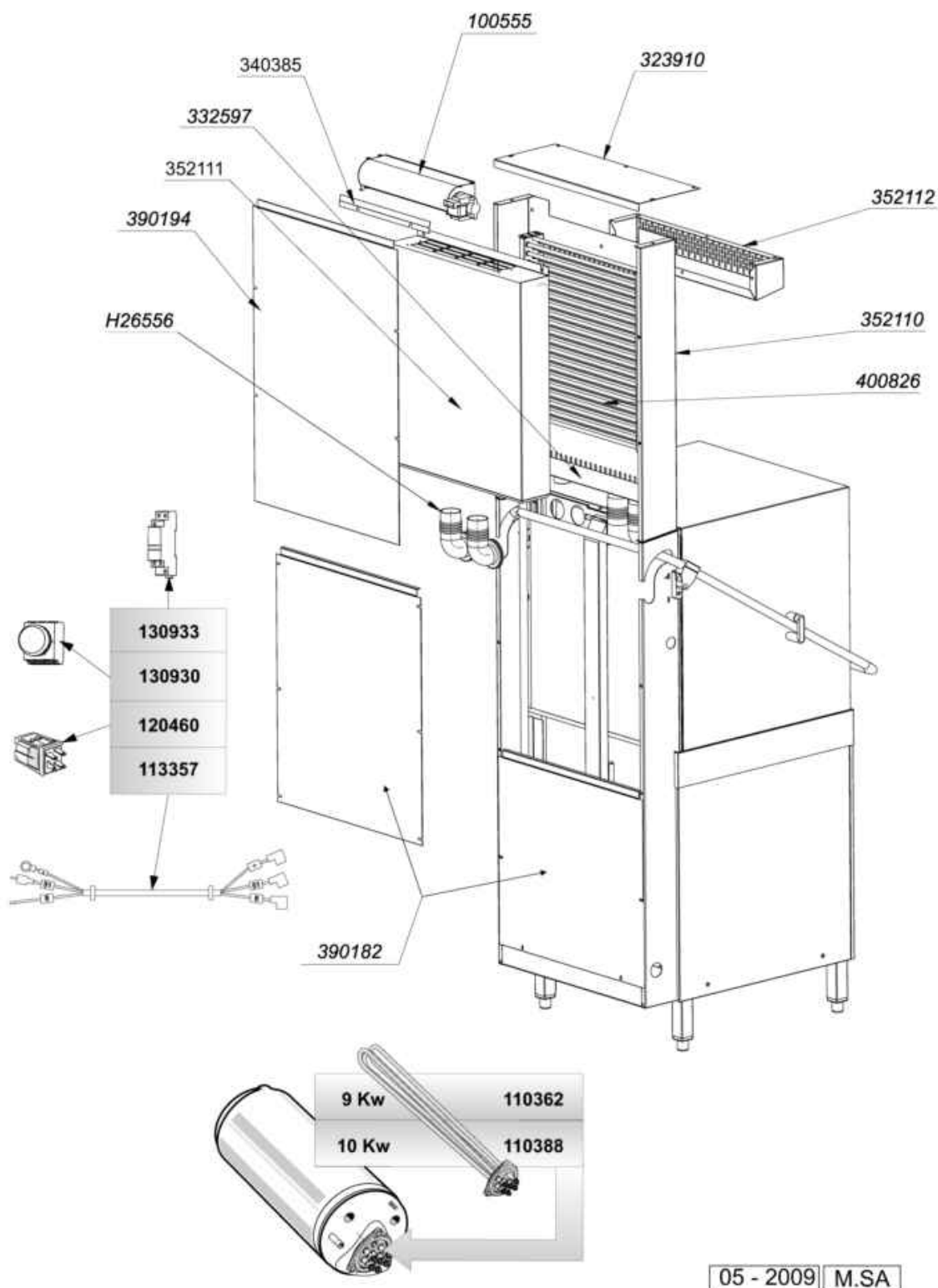


09 - 2007 | S. AG.

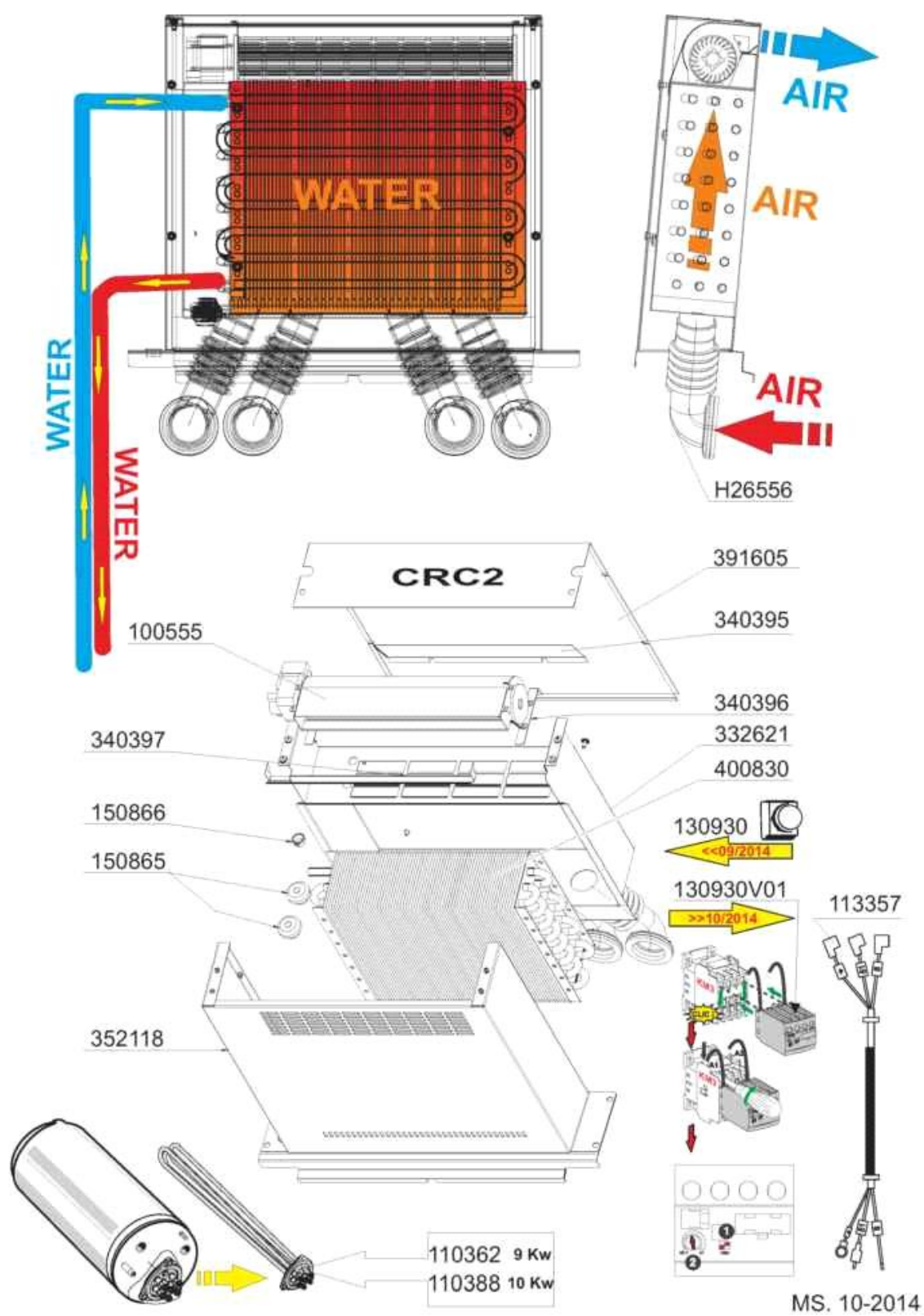
| Codice | Descrizione |
|--------|--------------------------------|
| 160714 | TAPPO DOSATORE MOPLN |
| 170701 | GHIERA DA 1/2" X DOSATORE |
| 180306 | PORTAGOMMA DOSATORE |
| 190107 | COPERCHIO DOSATORE MOPLN |
| 190108 | CORPO DOSATORE MOPLN |
| 190803 | ANELLO SOST.GUARNIZ.DOSAT. |
| 191018 | PORTAFILTRO DOSATO.MOPLN |
| 200444 | VALVOLA ASP.DOSATORE SILICONE |
| 200816 | OR 3X59,36X65,36 DOS. |
| 200825 | GUARN.OR 3X5X11 TORO X DOS. |
| 200861 | ANELLO OR 14X18X2 NBR |
| 260142 | VITE TE 4X16 INOX A2 UNI 5739 |
| 260213 | VITE TCP 5X25 INOX A2 UNI 6107 |
| 260402 | DADI STAMP. D4 INOX UNI 5588 |
| 260404 | DADI TORNITI INOX"M6"UNI-5588 |
| 260512 | RONDEL.GROWER D6 INOX UNI 1751 |
| 330543 | FILTRO D. 17 LAM. STIRATA |
| 340483 | PISTONE INOX DOSATORE |
| 381105 | DISCO MEMBRANA DOSAT.BRILL. |
| 440405 | GUARNIZIONE DOSAT.BRILLANT. |
| 450214 | MOLLE RICH.DOSATORE |
| 620120 | DOSATORE BRILLANTANTE |
| 630614 | MEMBRANA DOSATORE |



| Codice | Descrizione |
|--------|---------------------------------|
| 100803 | POMPA SC.100W 220V/50 C/FILTRO |
| 160203 | COD.CURVO 1"1/2 SCAR. |
| 180102 | GHIERA 1"1/2 PILETTA F-C75 |
| 200346 | TUBO SCAR.LAVABICCHIERI |
| 200412 | GUARNIZ.CODULO 45X33X3 |
| 201073 | TUBO ASP.POMPA SCARICO LC-C |
| 260223 | VITE INOX "TB"-5X12- |
| 260224 | VITE INOX "TB"-6X15- |
| 260403 | DADI STAMP. D5 INOX UNI 5588 |
| 260503 | RONDEL.PIANE D5 INOX UNI 6592 |
| 260512 | RONDEL.GROWER D6 INOX UNI 1751 |
| 260542 | ROND.ONDULATA D.5 INOX 137/A |
| 332333 | SQUADRETTA X POMPA DI SCARICO\$ |
| 450106 | FASCETTA FE ZN.32-44 H=12,2 |
| 450114 | FASCETTA FE ZN.22-32 H=12,2 |
| 630139 | GRUPPO ASP.C/FILTRO POMPA SC. |



| Codice | Descrizione |
|--------|---------------------------------|
| 100555 | VENT.TANG.TGA60/1 360-30 |
| 110362 | RES.FL.9000W.230/400V |
| 110388 | RES.FL.10000W.230/400V |
| 113357 | CABLAG.KIT CRC |
| 120460 | RELE' 20A 1 SCAMBIO 220V |
| 130930 | CONT.ABB TEMP.DIS.(130930V01) |
| 130933 | CONTATTO SUPP.LAT.1NO/1NC ABB\$ |
| 323910 | CAPPELLO SUP. CAPOT CRC C2001 |
| 332597 | COLLETTORE ASPIRAZ. CRC C2001 |
| 340385 | PARATIA VENT."POST" CRC C2001 |
| 352110 | SCHIENALE R.C. PER C2001 |
| 352111 | PANN.POSTERIORE PER CRC. C2001 |
| 352112 | CARTER ANTERIORE CRC. C2001 |
| 390182 | PANNELLO POSTERIORE C ANNO2001 |
| 390194 | PANNELLO POST. PER CRC. C2001 |
| 400826 | BATTERIA "CRC" MOD SBT-8-50/75 |
| H26556 | MANICOTTO SFIATO GF90 |



| Codice | Descrizione |
|-----------|--------------------------------|
| 100555 | VENT.TANG.TGA60/1 360-30 |
| 110362 | RES.FL.9000W.230/400V |
| 110388 | RES.FL.10000W.230/400V |
| 113357 | CABLAG.KIT CRC |
| 130930 | CONT.ABB TEMP.DIS.(130930V01) |
| 130930V01 | CONT.ABB TEMP.TEF5-OFF |
| 150865 | PASSAC.IP 67 CAVO/TUBO 15/20mm |
| 150866 | PASSAC.RIGIDO TUBI D.16 |
| 332621 | COLLETTORE ASPIRAZ. CRC2 |
| 340395 | PARATIA VENT."POST" CRC2 |
| 340396 | SQUADR.SOST.VENT.100555 CRC2 |
| 340397 | DEFLETTORE INTERNO CRC2 |
| 352118 | SCHIENALE PER CRC2 |
| 400830 | BATTERIA CRC2 (MOD 395201) |
| H26556 | MANICOTTO SFIATO GF90 |