

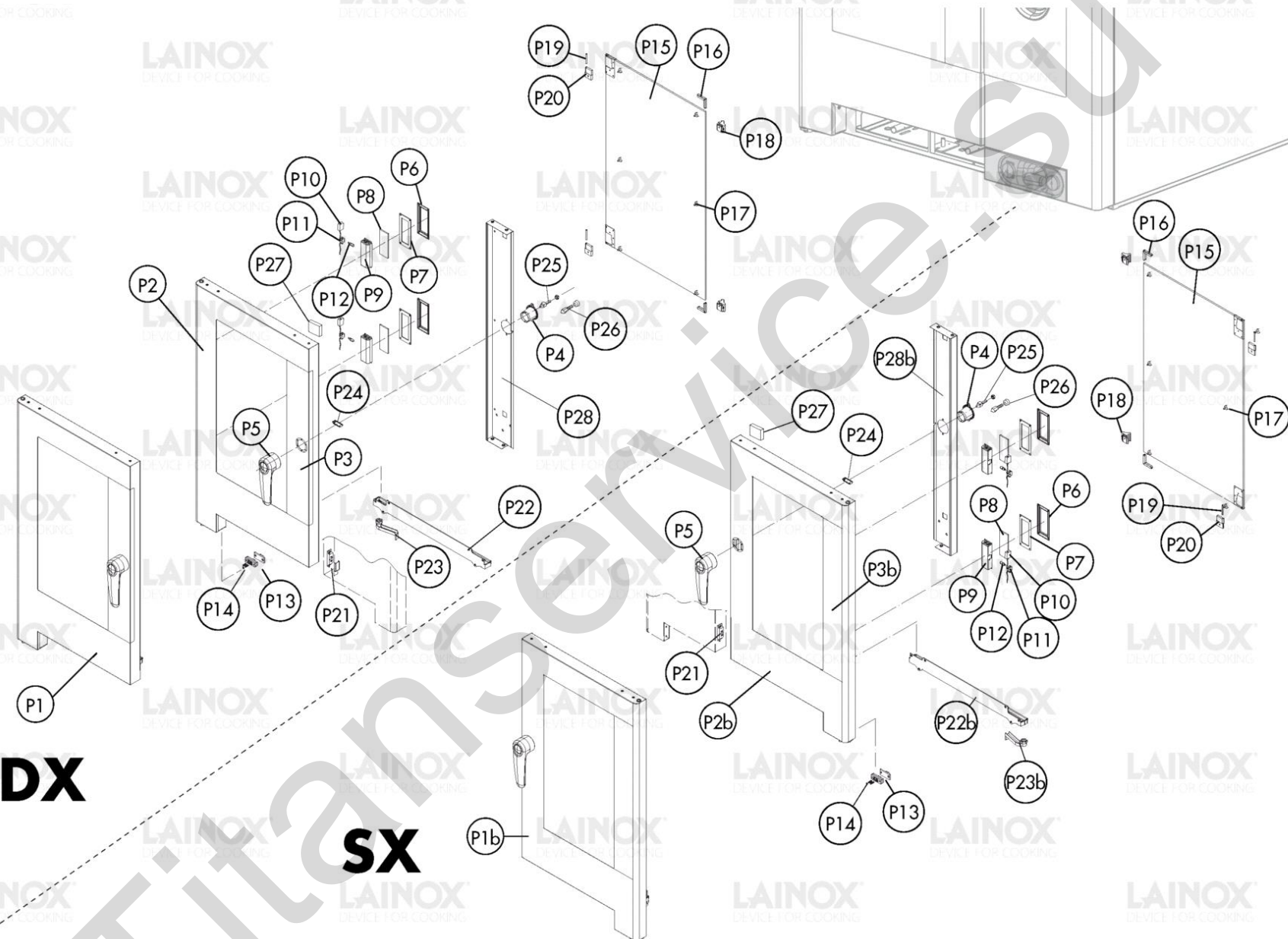
Warning! The exploded views refer to the general model

**TAV. A**

Pos.	Code	Previous code	Description	Notes	From:	To:	Price (€)
0001	LAR65040600		MOTOR [C] 220/240V 0,25KW ONE SPEED				203.90
0001	LAR65041300		MOTOR [C] 230V 50/60HZ 0,25KW ONE SPEED	UL Version (USA-CAN)			275.50
0002	LA58003870	LAR58003870	COUNTER FLANGE [C]				31.40
0003	LA70020040	LAR70020040	GASKET [C]				27.00
0004	LA58003860	LAR58003860	FLANGE [C] GASKET				29.60
0005	LA75400570	LAR75400570	FAN [C] D. 240X80 50HZ				108.60
0006	LA61400052		WASHER [C] D. 10,5X21X2				1.20
0007	LA70030200		GASKET [C] HEATING ELEMENTS				10.10
0008	LA65011940	LAR65011940	HEATING ELEMENT [C] 10000W 208V	UL Version 208V (USA-CAN)			123.00
0008	LAR65011930		HEATING ELEMENT [C] 10000W 230V				199.60
0008	LAR65011970		HEATING ELEMENT [C] 10000W 277V D.8,5	UL Version 277V (USA-CAN 3AC 480V)			
0009	LA70010370	LAR70010370	GASKET [C]				7.10
0010	LA69150110	LAR69150110	CAP [C]				7.60
0011	LA70050140	LAR70050140	GASKET [C] CAP BOILER G40015				13.00
0012	BN2519490	LAR70010360	GASKET [C] KNOB V-SEAL A40/NBR				7.60
0013	LAR58006690		CAP [C] SERIE 2014				43.30
0014	LAR14216700		BOILER [C] GEMT07/NA-SAE071				450.00
0015	LAR58004040		INOX NUT [C] 3/4X8 M/106-120				
0016	LA65320010	LAR65320010	LEVEL PROBE [C]				29.10
0017	LA65020310	LAR65020310	HEATING ELEMENT [C] 7500W 208V BOILER ME/106-110	UL Version 208V (USA-CAN)			76.00
0017	LA65020340	LAR65020340	HEATING ELEMENT [C] 7500W 277V BOILER	UL Version 277V (USA-CAN 3AC 480V)			76.00
0017	LA65020350	LAR65020350	HEATING ELEMENT [C] 7500W 230V BOILER ME/105-106				76.00
0018	LAR65110571		VALVE [C] 230V				212.90
0019	LA62080093	LAR62080093	JOINT [C]				50.30
0020	LA65324550	LAR65324550	LEVEL PROBE [C]				34.00
0021	LA62090918	LAR62090918	INTERMEDIATE CURVED CONNECTOR [C] D. 10 SPEEDFIT				19.00
0022	LA80150060	LAR80150060	PIPE [C] PEX-B D. 10MM L.100M				9.20
0023	LA62090528	LAR62090528	CURVED CONNECTOR [C] 10X10				16.40
0024	LAR65110210		SOLENOID VALVE [C] 220V 50HZ 2 OUTLETS JG CONNECTION			3/1/2015	38.10
0024	LAR65110330		DOUBLE SOLENOID VALVE 2 WAYS 230V 50/60HZ OUT J.G. D.10		3/3/2015		46.20
0025	LA62090798	LAR62090798	STRAIGHT REDUCTION [C] D. 8-6				17.20

Pos.	Code	Previous code	Description	Notes	From:	To:	Price (€)
0026	LA80150020	LAR80150020	TRANSPARENT POLIURETHANE PIPE [C] D. 8X6MM				7.40
0027	LA65110630	LAR65110630	SUPPORT [C] PUMP				14.70
0028	LAR65110620		PUMP [C] 230V 50HZ				45.00
0029	LA80150020	LAR80150020	TRANSPARENT POLIURETHANE PIPE [C] D. 8X6MM				7.40
0030	LA62090878	LAR62090878	INTERMEDIATE STRAIGHT CONNECTOR [C] D. 8				14.90
0031	LAR11200650		EXTENSION [C] VAPORISEUR M/061				38.20
0032	LA14219610		PIPE [C] CONNECTOR HUMIDIFIER N/ S_071 2017				38.70
0033	LA62090908	LAR62090908	INTERMEDIATE STRAIGHT CONNECTOR [C] D. 10 SPEEDFIT				14.70
0034	LA80150060	LAR80150060	PIPE [C] PEX-B D. 10MM L.100M				9.20
0035	LAR65320220		PROBE [C] K L. 1,5M				39.60
0036	LA62070023	LAR62070023	BICONE [C] D. 6				1.20
0037	LA62060223	LAR62060223	NUT [C] D. 6				1.90
0038	LAR65095000		MOTOR [C]				66.10
0039	LAR14170570		PIPE [C] MOTORIZED VENT N/S071 T07				358.70
0040	LAR70030180		GRAPHITE GASKETS KIT [C] 80x50,3x3 SET 5 PIECES				30.50
0041	LAR14201030		DEFLECTOR [C] N/S071 2014				249.60
0042	LA75300050	LAR75300050	PLATE [C] FAN D. 270 N/S071 2014				35.10
0043	LAR58003110		PIN [C] DEFLECTOR CLAMPING				19.10
0044	LA14402130	LAR14402130	HINGE [C]				31.50
0045	LA58000370	LAR58000370	PIN [C] UPPER HINGE				21.20
0046	LA58004050	LAR58004050	NUT [C]				13.30
0047	LA11207240	LAR11207240	LOWER HINGE KIT [C] M-V/061-101-102 2005				43.60
0048	LA58002670	LAR58002670	LOWER PIN [C] HINGE SR 2005				30.50
0049	LA58000360	LAR58000360	NUT [C]				17.60
0050	LA70048002		GASKET [C] DOOR T07 2016				62.00
0051	LAR69180210		DRAIN CONTAINER [C] N/S071-101 2014				26.30
0052	LA69180250	LAR69180250	FILTER [C] CONTAINER DRAIN				18.20
0053	LA14443100		RACK [C] GN N/S 071 7 LEVELS				120.30
0054	LAR10201710		AIR FILTER [C] DRAIN M/210-12 D.86/44,5				34.00
0055	LAR70030180		GRAPHITE GASKETS KIT [C] 80x50,3x3 SET 5 PIECES				30.50
0056	LA70060040	LAR70060040	SILICONE COUPLING [C] D. INNER 51 D. EXTERIOR 59				19.90

Pos.	Code	Previous code	Description	Notes	From:	To:	Price (€)
0057	LAR70060080		SILICONE COUPLING [C] D. 13X18X80				14.20
0058	LAR69180120		BOX [C] DRAIN PIPE G/MV T06-T10-T21				45.70
0059	LA58006160		NOZZLE [C] D. 0,80				20.00
0060	LA62090633	LAR62090633	CURVED CONNECTOR [C] 10/10				24.60
0061	LA70050150	LAR70050150	GASKET [C] BOILER CAP				13.40
0062	LA69150100	LAR69150100	CAP [C]				11.90
0063	LA61630031	LAR61630031	ZINC CLAMP [C]				6.00
0064	LA62280038	LAR62280038	CURVE [C]				24.10
0065	LAR65240030		FAIRLEAD [C]				30.10

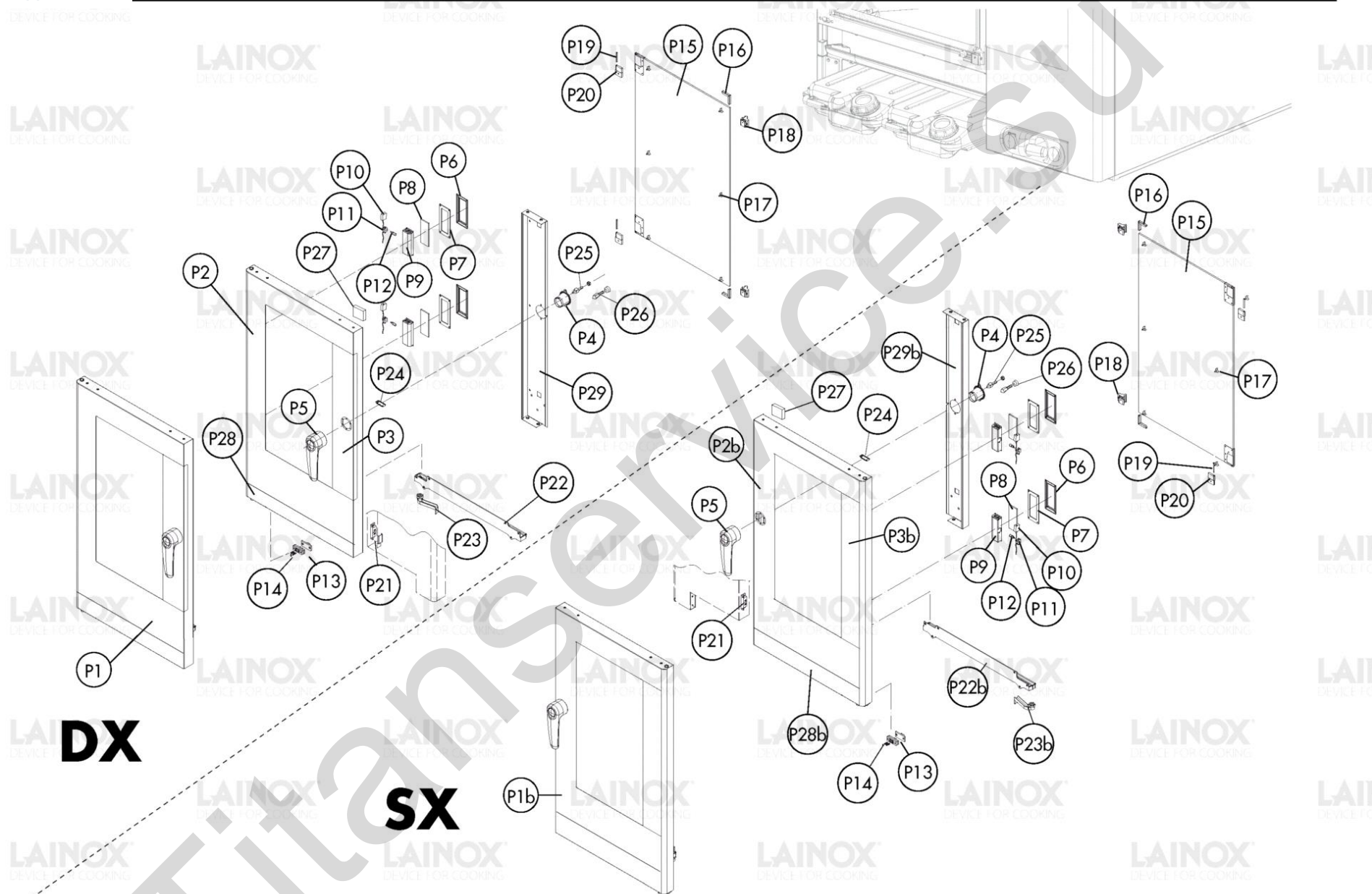


Warning! The exploded views refer to the general model

**TAV. B - SCS**



Pos.	Code	Previous code	Description	Notes	From:	To:	Price (€)
00P1	LAR14162600		DOOR [C] NA_071				747.70
00P2	LAR14200760		EXTERIOR DOOR [C] NA_071				341.40
00P3	LA67016541		RIVESTIMENTO PORTA C/MAN. NA_071R-072R				78.20
00P4	LAR69010630		COVERING [C] GROUP 6303 CLOSING				18.50
00P5	LA69010190	LAR69010190	LOCK [C] 6303 N/S2014				91.80
00P6	LA11401450	LAR11401450	FLANGE [C] BULB GLASS				18.90
00P7	LA70044200	LAR70044200	GASKET [C] BULB GLASS P2000				13.60
00P8	LA71500150	LAR71500150	GLASS PLATE [C]				18.20
00P9	LA11401440		LAMP COVER [C]				23.90
0P10	LA66110310	LAR66110310	DOOR LIGHTS CABLE SET [C] M-V/061				15.00
0P11	LA65270450	LAR65270450	LAMP HOLDER [C]				14.60
0P12	LA65270020	LAR65270020	BULB [C] 12V 20W G4				5.50
0P13	LAR65260752		CONTACT [C]				56.10
0P14	LA61600031	LAR61600031	GASKET [C] D. 3,2				6.50
0P15	LAR71202210		GLASS PLATE [C]				354.90
0P16	LA11423460	LAR11423460	PROTECTION [C] DOOR GLASS K E T 2011				15.50
0P17	LAR70050180		SPACER [C] GLASS PLATE 15X8				8.50
0P18	LAR17406230		KIT CLIP BLOCCO VETRO PORTA				17.60
0P19	LA58001770	LAR58001770	PIN [C] GLASS HINGE SR2000				8.10
0P20	LA58001760	LAR58001760	HINGE [C]				18.80
0P21	LAR65265100		MICROSWITCH [C] DOOR				52.50
0P22	LAR69180220		DOOR CONTAINER [C] N/S071-101 2014				27.60
0P23	LA69180010	LAR69180010	WATER DRAIN [C] CONTAINER				27.40
0P24	LA61620132	LAR61620132	SPRING [C] PRONG HOOK				37.30
0P25	LA69010260	LAR69010260	PRONG [C]				33.60
0P26	LAR69010270		PRONG [C]				55.90
0P27	LA11420660	LAR11420660	FLANGE [C]				
0P3b	LA67016721		RIVESTIMENTO PORTA S/MAN. NA_071R-072R				78.20
P23b	LA11202240	LAR11202240	WATER DRAIN [C] CONTAINER SR2000				88.80



Warning! The exploded views refer to the general model

**TAV. B - LCS**

Pos.	Code	Previous code	Description	Notes	From:	To:	Price (€)
00P1	LAR14171320		DOOR [C] NA_071				1,328.20
00P2	LAR14203660		DOOR [C] EXTERNAL NA_071 WITH TANK				596.70
00P3	LA67016541		RIVESTIMENTO PORTA C/MAN. NA_071R-072R				78.20
00P4	LAR69010630		COVERING [C] GROUP 6303 CLOSING				18.50
00P5	LA69010190	LAR69010190	LOCK [C] 6303 N/S2014				91.80
00P6	LA11401450	LAR11401450	FLANGE [C] BULB GLASS				18.90
00P7	LA70044200	LAR70044200	GASKET [C] BULB GLASS P2000				13.60
00P8	LA71500150	LAR71500150	GLASS PLATE [C]				18.20
00P9	LA11401440		LAMP COVER [C]				23.90
0P10	LA66110310	LAR66110310	DOOR LIGHTS CABLE SET [C] M-V/061				15.00
0P11	LA65270450	LAR65270450	LAMP HOLDER [C]				14.60
0P12	LA65270020	LAR65270020	BULB [C] 12V 20W G4				5.50
0P13	LAR65260752		CONTACT [C]				56.10
0P14	LA61600031	LAR61600031	GASKET [C] D. 3,2				6.50
0P15	LAR71202210		GLASS PLATE [C]				354.90
0P16	LA11423460	LAR11423460	PROTECTION [C] DOOR GLASS K E T 2011				15.50
0P17	LAR70050180		SPACER [C] GLASS PLATE 15X8				8.50
0P18	LAR17406230		KIT CLIP BLOCCO VETRO PORTA				17.60
0P19	LA58001770	LAR58001770	PIN [C] GLASS HINGE SR2000				8.10
0P20	LA58001760	LAR58001760	HINGE [C]				18.80
0P21	LAR65265100		MICROSWITCH [C] DOOR				52.50
0P22	LAR69180220		DOOR CONTAINER [C] N/S071-101 2014				27.60
0P23	LA69180010	LAR69180010	WATER DRAIN [C] CONTAINER				27.40
0P24	LA61620132	LAR61620132	SPRING [C] PRONG HOOK				37.30
0P25	LA69010260	LAR69010260	PRONG [C]				33.60
0P26	LAR69010270		PRONG [C]				55.90
0P27	LA11420660	LAR11420660	FLANGE [C]				
0P28	LAR67017890		RIVESTIMENTO PORTA N/S071/101 C/ TANICHE				
0P2b	LAR14204080		OUTER DOOR [C] REVERSE NA_071 W/ TANK				596.50
0P3b	LA67016721		RIVESTIMENTO PORTA S/MAN. NA_071R-072R				78.20
P23b	LA11202240	LAR11202240	WATER DRAIN [C] CONTAINER SR2000				88.80



LAINOX  
DEVICE FOR COOKING

LAINOX  
DEVICE FOR COOKING

LAINOX  
DEVICE FOR COOKING

LAINOX  
DEVICE FOR COOKING

LAINOX  
DEVICE FOR COOKING

LAINOX  
DEVICE FOR COOKING

LAINOX  
DEVICE FOR COOKING

LAINOX  
DEVICE FOR COOKING

LAINOX  
DEVICE FOR COOKING

LAINOX  
DEVICE FOR COOKING

LAINOX  
DEVICE FOR COOKING

LAINOX  
DEVICE FOR COOKING

LAINOX  
DEVICE FOR COOKING

LAINOX  
DEVICE FOR COOKING

LAINOX  
DEVICE FOR COOKING

LAINOX  
DEVICE FOR COOKING

LAINOX  
DEVICE FOR COOKING

LAINOX  
DEVICE FOR COOKING

LAINOX  
DEVICE FOR COOKING

LAINOX  
DEVICE FOR COOKING

LAINOX  
DEVICE FOR COOKING

LAINOX  
DEVICE FOR COOKING

LAINOX  
DEVICE FOR COOKING

LAINOX  
DEVICE FOR COOKING

LAINOX  
DEVICE FOR COOKING

LAINOX  
DEVICE FOR COOKING

LAINOX  
DEVICE FOR COOKING

LAINOX  
DEVICE FOR COOKING

LAINOX  
DEVICE FOR COOKING

LAINOX  
DEVICE FOR COOKING

LAINOX  
DEVICE FOR COOKING

LAINOX  
DEVICE FOR COOKING

LAINOX  
DEVICE FOR COOKING

LAINOX  
DEVICE FOR COOKING

LAINOX  
DEVICE FOR COOKING

LAINOX  
DEVICE FOR COOKING

LAINOX  
DEVICE FOR COOKING

LAINOX  
DEVICE FOR COOKING

LAINOX  
DEVICE FOR COOKING

LAINOX  
DEVICE FOR COOKING

LAINOX  
DEVICE FOR COOKING

LAINOX  
DEVICE FOR COOKING

LAINOX  
DEVICE FOR COOKING

LAINOX  
DEVICE FOR COOKING

LAINOX  
DEVICE FOR COOKING

LAINOX  
DEVICE FOR COOKING

LAINOX  
DEVICE FOR COOKING

LAINOX  
DEVICE FOR COOKING

LAINOX  
DEVICE FOR COOKING

LAINOX  
DEVICE FOR COOKING

LAINOX  
DEVICE FOR COOKING

LAINOX  
DEVICE FOR COOKING

LAINOX  
DEVICE FOR COOKING

LAINOX  
DEVICE FOR COOKING

LAINOX  
DEVICE FOR COOKING

Warning! The exploded views refer to the general model

**TAV. B - NAA - SCS**

Pos.	Code	Previous code	Description	Notes	From:	To:	Price (€)
OP1A	LAR14162610		AUTOMATIC DOOR [C] NA_071				842.50
OP2A	LAR14218100		EXTERIOR AUTOMATIC DOOR [C] NA_071				744.60
OP3A	LA67016721		RIVESTIMENTO PORTA S/MAN. NA_071R-072R				78.20
OP4A	LA14218140	LAR14218140	COVER [C]				63.00
OP5A	LA11401450	LAR11401450	FLANGE [C] BULB GLASS				18.90
OP6A	LA70044200	LAR70044200	GASKET [C] BULB GLASS P2000				13.60
OP7A	LA71500150	LAR71500150	GLASS PLATE [C]				18.20
OP8A	LA11401440		LAMP COVER [C]				23.90
OP9A	LA65270020	LAR65270020	BULB [C] 12V 20W G4				5.50
P10A	LA66110310	LAR66110310	DOOR LIGHTS CABLE SET [C] M-V/061				15.00
P11A	LA65270450	LAR65270450	LAMP HOLDER [C]				14.60
P12A	LAR65260752		CONTACT [C]				56.10
P13A	LA61600031	LAR61600031	GASKET [C] D. 3,2				6.50
P14A	LA69180010	LAR69180010	WATER DRAIN [C] CONTAINER				27.40
P15A	LAR69180220		DOOR CONTAINER [C] N/S071-101 2014				27.60
P16A	LAR71202210		GLASS PLATE [C]				354.90
P17A	LA58001770	LAR58001770	PIN [C] GLASS HINGE SR2000				8.10
P18A	LA58001760	LAR58001760	HINGE [C]				18.80
P19A	LA11423460	LAR11423460	PROTECTION [C] DOOR GLASS K E T 2011				15.50
P20A	LAR70050180		SPACER [C] GLASS PLATE 15X8				8.50
P21A	LAR17406230		KIT CLIP BLOCCO VETRO PORTA				17.60
P22A	LAR14218130		PIN [C]				
P23A	BN1412083		RIGHT SPRING [R] BLIND DOORS CABINETS				12.00
P24A	LAR14402400		UPPER HINGE [C] FOR DOOR N/S 2014				
P25A	LA58007180	LAR58007180	LOWER PIN [C] HINGE				32.10
P26A	LA61660110	LAR61660110	FORK [C]				22.70
P27A	LA61660120	LAR61660120	AXIAL CONNECTOR [C] SM6				40.40
P28A	LA65090310	LAR65090310	ACTUATOR [C]				142.30
P29A	LAR85340022		CAVO DI ACCIAIO INOX				
P30A	LA11420660	LAR11420660	FLANGE [C]				
P33A	LAR69010850		PRONG [C] L. 28,5			6/8/2014	68.60
P33A	LAR69010860		PRONG [C] L. 28,5		6/9/2014		43.60
P34A	LA58007220	LAR58007220	CATCH [C] SPRING				23.10
P35A	LA61620132	LAR61620132	SPRING [C] PRONG HOOK			6/8/2014	37.30

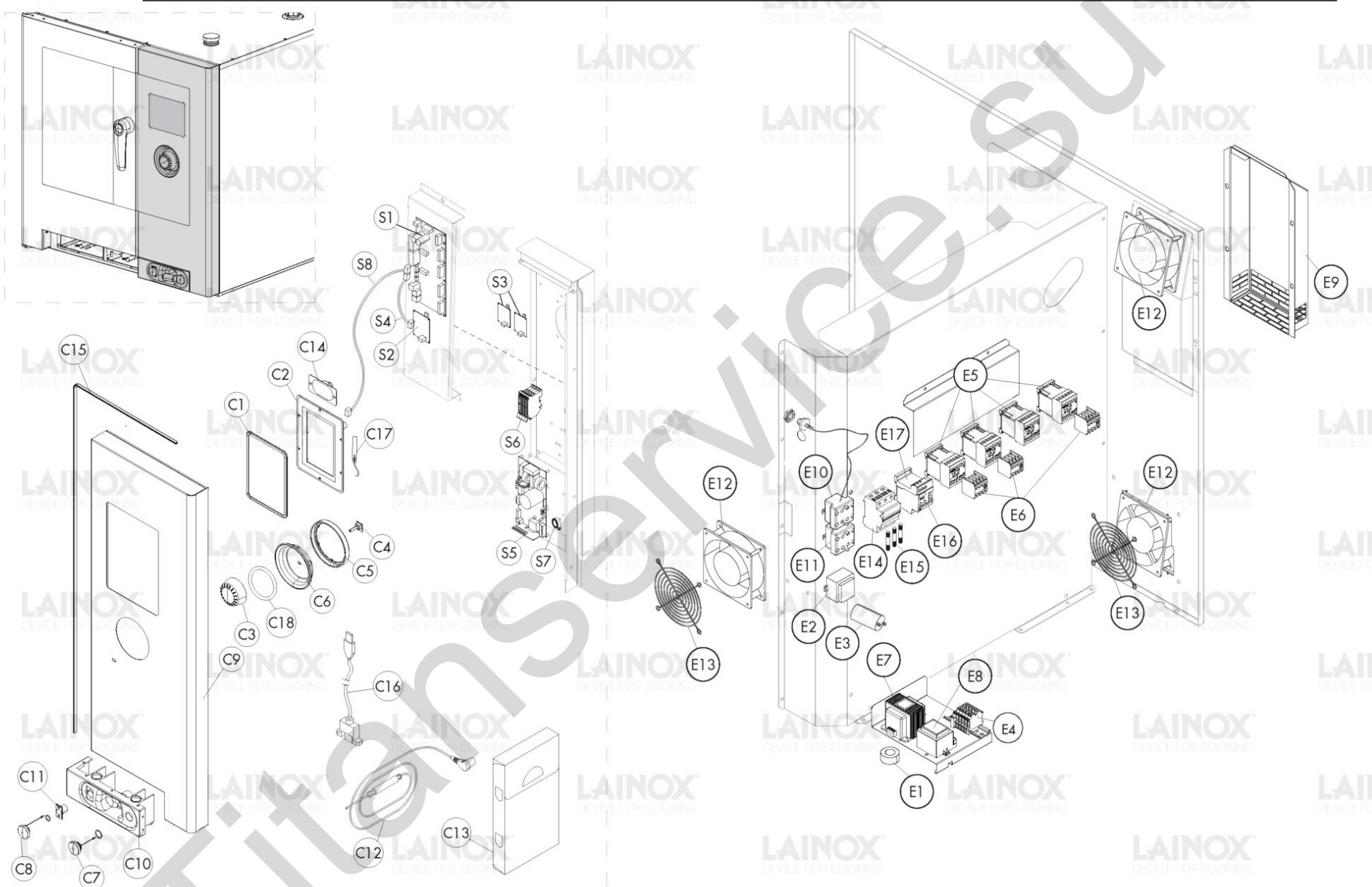
Pos.	Code	Previous code	Description	Notes	From:	To:	Price (€)
P35A	LA61620152	LAR61620152	SPRING [C] PRONG HOOK		6/9/2014		35.20
P36A	LA58007170	LAR58007170	SUPPORT [C] SPRING TRIP WITH LEVER				30.70
P37A	LA58007200	LAR58007200	BUSH [C] EXTERNAL AUTOM. RELEASE				23.20
P38A	LAR58007190		INTERIOR BUSH [C] FOR AUTOMATIC RELEASE				18.00
P39A	LAR65265100		MICROSWITCH [C] DOOR				52.50
P40A	LA67016871		BUTTON [C] AUTOMATIC DOOR N RELOADED				35.20
P41A	LA65210020	LAR65210020	FUSE CARRIER [C] 5X20				16.90
P42A	LA61660130	LAR61660130	TERMINAL [C]				12.70
P43A	LA65301760	LAR65301760	DIODE BRIDGE [C]				11.10
P44A	LA65170100	LAR65170100	RELAY [C]				43.00

## TAV. B - NAA - LCS

Pos.	Code	Previous code	Description	Notes	From:	To:	Price (€)
OP1A	LAR14171330		AUTOMATIC DOOR [C] NA_071				1,421.10
OP2A	LAR14203860		OUTER DOOR [C] 071 AUTOM. OPENING W/TANK				633.30
OP3A	LA67016721		RIVESTIMENTO PORTA S/MAN. NA_071R-072R				78.20
OP4A	LA14218140	LAR14218140	COVER [C]				63.00
OP5A	LA11401450	LAR11401450	FLANGE [C] BULB GLASS				18.90
OP6A	LA70044200	LAR70044200	GASKET [C] BULB GLASS P2000				13.60
OP7A	LA71500150	LAR71500150	GLASS PLATE [C]				18.20
OP8A	LA11401440		LAMP COVER [C]				23.90
OP9A	LA65270020	LAR65270020	BULB [C] 12V 20W G4				5.50
P10A	LA66110310	LAR66110310	DOOR LIGHTS CABLE SET [C] M-V/061				15.00
P11A	LA65270450	LAR65270450	LAMP HOLDER [C]				14.60
P12A	LAR65260752		CONTACT [C]				56.10
P13A	LA61600031	LAR61600031	GASKET [C] D. 3,2				6.50
P14A	LA69180010	LAR69180010	WATER DRAIN [C] CONTAINER				27.40
P15A	LAR69180220		DOOR CONTAINER [C] N/S071-101 2014				27.60
P16A	LAR71202210		GLASS PLATE [C]				354.90
P17A	LA58001770	LAR58001770	PIN [C] GLASS HINGE SR2000				8.10
P18A	LA58001760	LAR58001760	HINGE [C]				18.80
P19A	LA11423460	LAR11423460	PROTECTION [C] DOOR GLASS K E T 2011				15.50
P20A	LAR70050180		SPACER [C] GLASS PLATE 15X8				8.50
P21A	LAR17406230		KIT CLIP BLOCCO VETRO PORTA				17.60
P22A	LAR14218130		PIN [C]				
P23A	BN1412083		RIGHT SPRING [R] BLIND DOORS CABINETS				12.00
P24A	LAR14402400		UPPER HINGE [C] FOR DOOR N/S 2014				
P25A	LA58007180	LAR58007180	LOWER PIN [C] HINGE				32.10
P26A	LA61660110	LAR61660110	FORK [C]				22.70
P27A	LA61660120	LAR61660120	AXIAL CONNECTOR [C] SM6				40.40
P28A	LA65090310	LAR65090310	ACTUATOR [C]				142.30
P29A	LAR85340022		CAVO DI ACCIAIO INOX				
P30A	LA11420660	LAR11420660	FLANGE [C]				
P33A	LAR69010850		PRONG [C] L. 28,5			6/8/2014	68.60
P33A	LAR69010860		PRONG [C] L. 28,5		6/9/2014		43.60
P34A	LA58007220	LAR58007220	CATCH [C] SPRING				23.10
P35A	LA61620132	LAR61620132	SPRING [C] PRONG HOOK			6/8/2014	37.30



Pos.	Code	Previous code	Description	Notes	From:	To:	Price (€)
P35A	LA61620152	LAR61620152	SPRING [C] PRONG HOOK		6/9/2014		35.20
P36A	LA58007170	LAR58007170	SUPPORT [C] SPRING TRIP WITH LEVER				30.70
P37A	LA58007200	LAR58007200	BUSH [C] EXTERNAL AUTOM. RELEASE				23.20
P38A	LAR58007190		INTERIOR BUSH [C] FOR AUTOMATIC RELEASE				18.00
P39A	LAR65265100		MICROSWITCH [C] DOOR				52.50
P40A	LA67016871		BUTTON [C] AUTOMATIC DOOR N RELOADED				35.20
P41A	LA65210020	LAR65210020	FUSE CARRIER [C] 5X20				16.90
P42A	LA61660130	LAR61660130	TERMINAL [C]				12.70
P43A	LA65301760	LAR65301760	DIODE BRIDGE [C]				11.10
P44A	LA65170100	LAR65170100	RELAY [C]				43.00
P45A	LAR67017890		RIVESTIMENTO PORTA N/S071/101 C/ TANICHE				

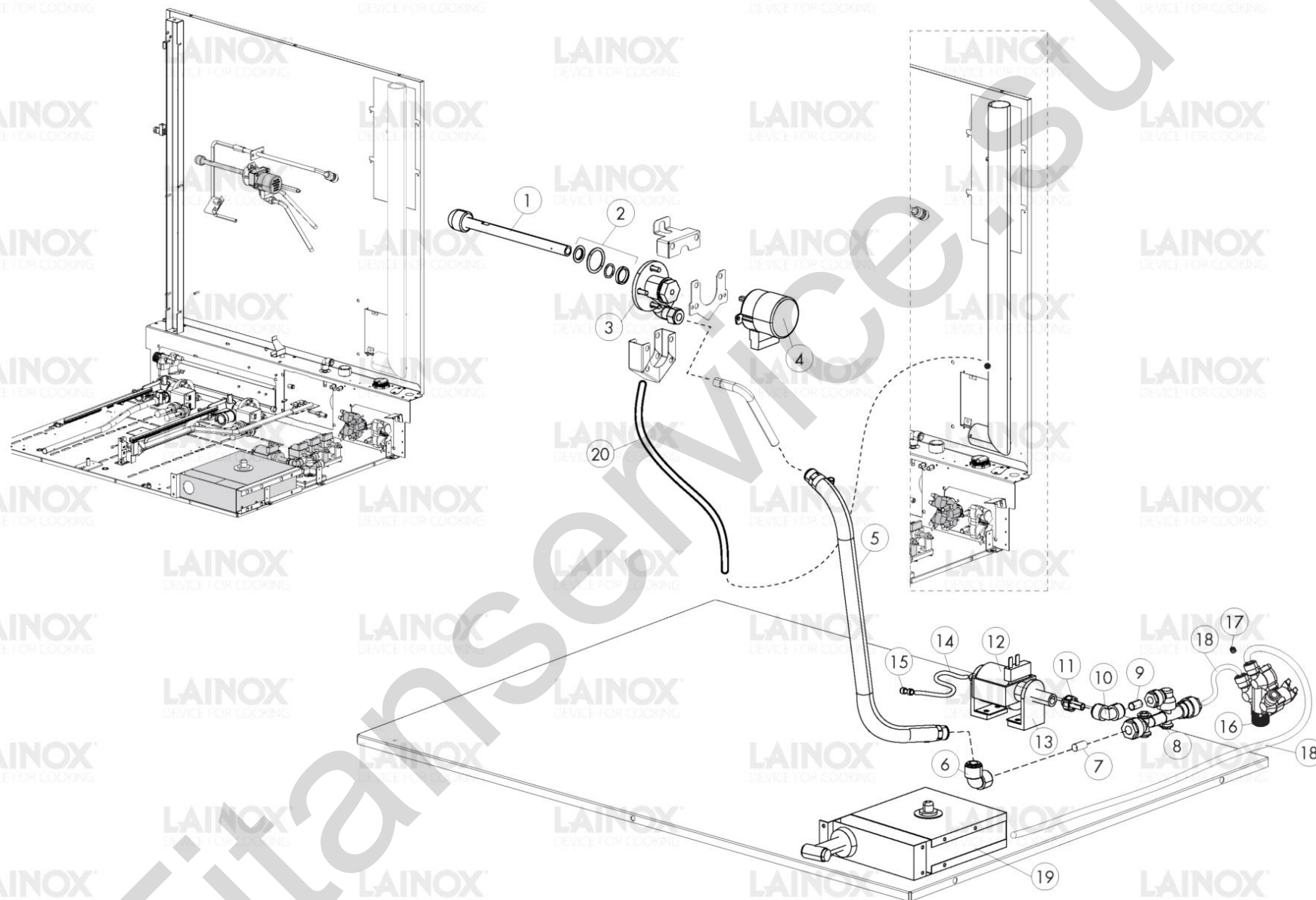


Warning! The exploded views refer to the general model

**TAV. C**

Pos.	Code	Previous code	Description	Notes	From:	To:	Price (€)
00C1	LA70040030	LAR70040030	GASKET [C] GLASS CONTROL PANEL BOARD N 2014				31.50
00C2	LA65302491		BOARD [C] DISPLAY NABOO+FRAME SOM E				1,066.70
00C3	LAR14102940		ENCODER UPGRADE C K				77.20
00C4	LAR14102940		ENCODER UPGRADE C K				77.20
00C5	LA69030330	LAR69030330	COUNTER FLANGE [C]				14.20
00C6	LAR14102940		ENCODER UPGRADE C K				77.20
00C7	LA65321310	LAR65321310	CAP [C] USB SOCKET				23.30
00C8	LA65321330	LAR65321330	CAP [C] N/S 2014				23.30
00C9	LAR14200690		FRONT PANEL ASSEMBLY [C] N071 2014				186.40
00E1	LA65280490		TOROIDAL FERRITE [C]				24.10
00E2	LA65450200	LAR65450200	INDUCTOR [C]				39.90
00E3	LA65280230	LAR65280230	AIR FILTER [C]				28.50
00E4	LA65220091	LAR65220091	TERMINAL BLOCK [C]				29.10
00E5	LA65140380	LAR65140380	CONTACTOR [C] 3RT1016-1AP02			7/31/2016	44.30
00E5	LA65140400	LAR65140400	CONTACTOR [C] 3RT1025-1AL20			7/31/2016	48.30
00E5	LA65140900		CONTACTOR [C]		8/1/2016		47.00
00E5	LA65140910		CONTACTOR [C]		8/1/2016		67.50
00E6	LA65140420	LAR65140420	CONTACT [C]			7/31/2016	22.10
00E6	LA65140930	LAR65140930	CONTACT [C]		8/1/2016		20.80
00E7	LA65180430	LAR65180430	TRANSFORMER [C] 40VA 0-220-240/12V				52.60
00E7	LA65187110		TRANSFORMER [C] 40VA 2.5/12/24V	UL Version (USA-CAN)			72.40
00E8	LA65180420		TRANSFORMER [C] 20VA 0-220-240/12V				39.80
00E8	LA65187110		TRANSFORMER [C] 40VA 2.5/12/24V	UL Version (USA-CAN)			72.40
00E9	LA14424581		SCATOLA EST.CONV.ARIA SCH.T06-10-21 PA66				
00S1	LA65302480	LAR65302480	PC BOARD [C] NABOO				299.00
00S2	LA65302520	LAR65302520	EXPANSION BOAD [C] BOILER NABOO				89.00
00S3	LA65302530	LAR65302530	EXPANSION BOAD [C] WASHING NABOO				83.00
00S4	LA65301740	LAR65301740	CONNECTING CABLE [C]				9.20
00S5	LAR65140090		INVERTER [C] 0,8KW	UL Version (USA-CAN)			395.10
00S5	LAR65140100		INVERTER 0,8 KW		4/1/2018		238.40
00S5	LAR65140890		INVERTER [C] 0,8KW			3/30/2018	269.60
00S6	LA65210020	LAR65210020	FUSE CARRIER [C] 5X20				16.90
00S7	LA65280480	LAR65280480	FERRITE [C]				13.00
00S8	LA65301750	LAR65301750	CONNECTING CABLE [C]				14.00
0C10	LA14402530	LAR14402530	CONNECTIONS FRAME [C]				30.20

Pos.	Code	Previous code	Description	Notes	From:	To:	Price (€)
0C11	LA65321360	LAR65321360	F-CONNECTOR [C] FOR CORE PROBE L. 1000				59.20
0C12	LA65321102		CORE PROBE [C] K 6 PIN				170.70
0C13	LA86020400		CORE TEMPERATURE PROBE BOX [C]				
0C14	LA65330060	LAR65330060	LOUDSPEAKER [C]				33.00
0C15	LAR80100101		PROFILO GUARNIZIONE NERO 2CRISTALLI 5M				
0C16	LA65302600	LAR65302600	CONNECTING CABLE [C] BOARD/USB OUTLET L. 850				25.90
0C17	LAR65303030		AERIEL ADHESIVE [C] X NA BOARD				78.90
0C18	LA70010290	LAR70010290	GASKET [C] 115X2,5				5.50
0E10	LA65070350	LAR65070350	THERMOSTAT [C] 360Å°C				72.00
0E10	LA65070370		THERMOSTAT [C] 360Å°C	UL Version (USA-CAN)			80.10
0E11	LA65070380	LAR65070380	THERMOSTAT [C] 150Å°C	UL Version (USA-CAN)			89.40
0E11	LAR65070081		THERMOSTAT [C] BOILER				58.70
0E12	LA65060050	LAR65060050	FAN [R] D. 120				52.50
0E13	LAR75300020		PLATE [C] FAN D. 120				14.30
0E14	LAR65210110		PORTAFUSIBILE BUSMANN BCC3X38 (2306338)	UL Version (USA-CAN)			
0E15	LAR65200400		FUSIBILE X MOT. KTK-R-6 600V 6A CL. CC	UL Version (USA-CAN)			
0E16	LA65160620	LAR65160620	HEAT-GUARD [C] 3RU1116-1BB0 1,4-2,0	UL Version (USA-CAN)		7/31/2016	47.40
0E16	LA65160880		HEAT-GUARD [C] 3RU2116-1BB0 1,4-2,0	UL Version (USA-CAN)	8/1/2016		67.30
0E17	LA65160550	LAR65160550	SUPPORT [C] HEAT-GUARD 3RU1916-3AA01	UL Version (USA-CAN)		7/31/2016	27.60
0E17	LA65160810	LAR65160810	THERMIC SUPPORT	UL Version (USA-CAN)	8/1/2016		

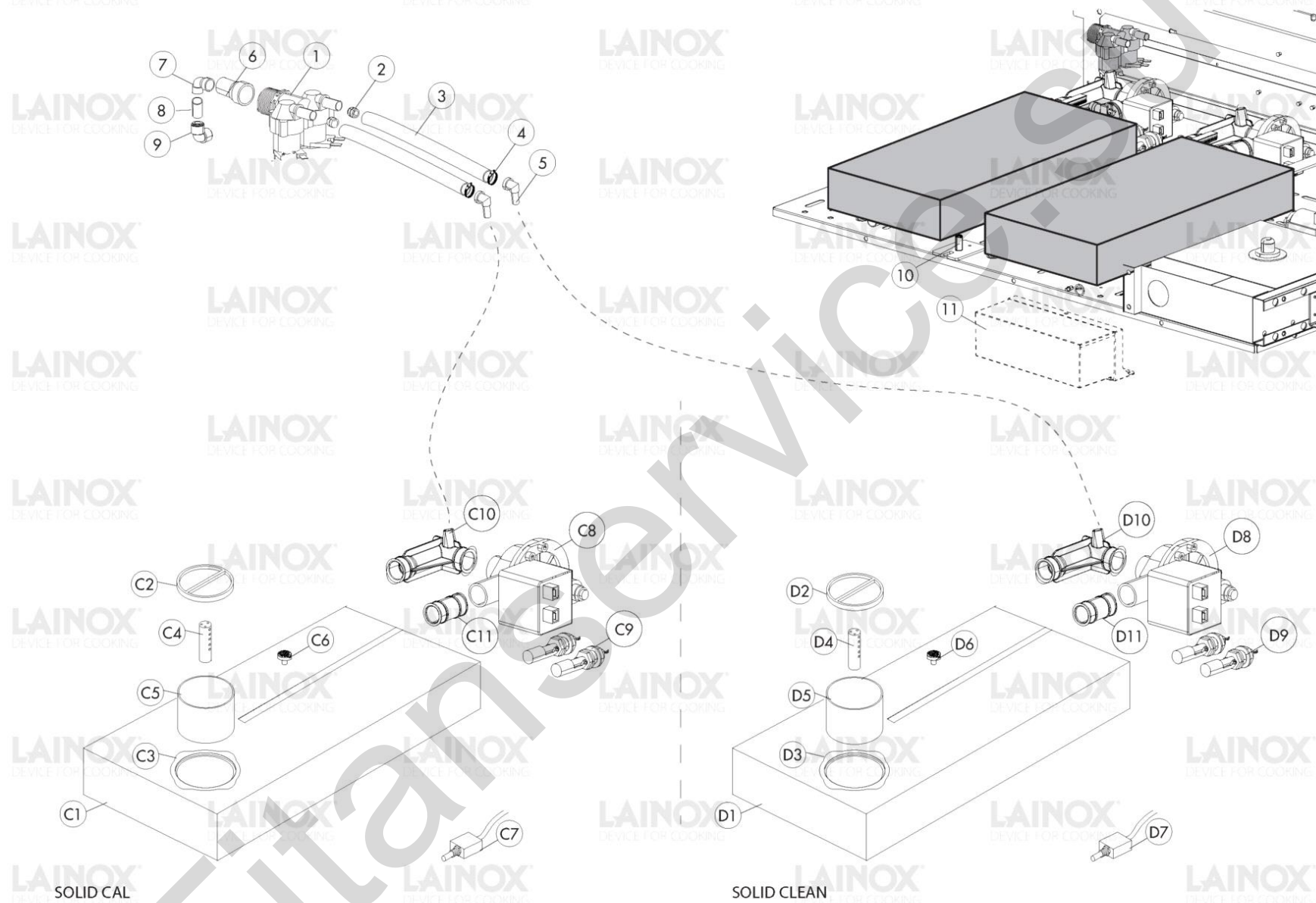


Warning! The exploded views refer to the general model

**TAV. D**



Pos.	Code	Previous code	Description	Notes	From:	To:	Price (€)
0001	LAR58007030		WASHING HEAD [C]				46.80
0002	LAR70045120		GASKET [W] MOB WASHING				38.00
0003	LAR58007020		FLANGE [C] MOB WASHING				68.50
0004	LA65090260	LAR65090260	GEARMOTOR [C]				61.20
0004	LAR65090250		GEARMOTOR [C]			3/20/2015	149.70
0005	LA14170300		PREM.TUBO LAV.DETER. N/ S071-101-072-102				
0006	LA62090478	LAR62090478	INTERMEDIATE CURVED CONNECTOR [C] D. 10				16.40
0007	LA80150000		LIGHT BLUE POLYETHYLENE PIPE [C] D. 10X7MM				6.40
0008	LA62090888	LAR62090888	MANIFOLD [C]		7/7/2014		50.70
0009	LA80150020	LAR80150020	TRANSPARENT POLIURETHANE PIPE [C] D. 8X6MM				7.40
0010	LA62090498	LAR62090498	INTERMEDIATE CURVED CONNECTOR [C] D. 8				15.40
0011	LA62090608	LAR62090608	END SIDE PIPE [C]				16.30
0012	LAR65110600		PUMP [C]				58.80
0013	LA65110610		SUPPORTO ELLE POMPA ET500/8 FORO PICCO				
0014	LA80150020	LAR80150020	TRANSPARENT POLIURETHANE PIPE [C] D. 8X6MM				7.40
0015	LA62090878	LAR62090878	INTERMEDIATE STRAIGHT CONNECTOR [C] D. 8				14.90
0016	LAR65110240		SOLENOID VALVE [C] 220V 50HZ 3 OUTLETS JG CONNECTION			3/2/2015	45.50
0016	LAR65110360		DOUBLE SOLENOID VALVE 3 WAY D.10		3/3/2015		47.60
0017	LA65110500	LAR65110500	MASS FLOW BROWN REGULATOR [C] 8L/ H				8.40
0018	LA80150000		LIGHT BLUE POLYETHYLENE PIPE [C] D. 10X7MM				6.40
0019	LA62200172	LAR62200172	SHOWER HEAD [C] N071/101/072/102 2014				290.50
0020	LA80120060	LAR80120060	TRANSPARENT SILICONE PIPE [C] SR60/ TR 7/12				24.40

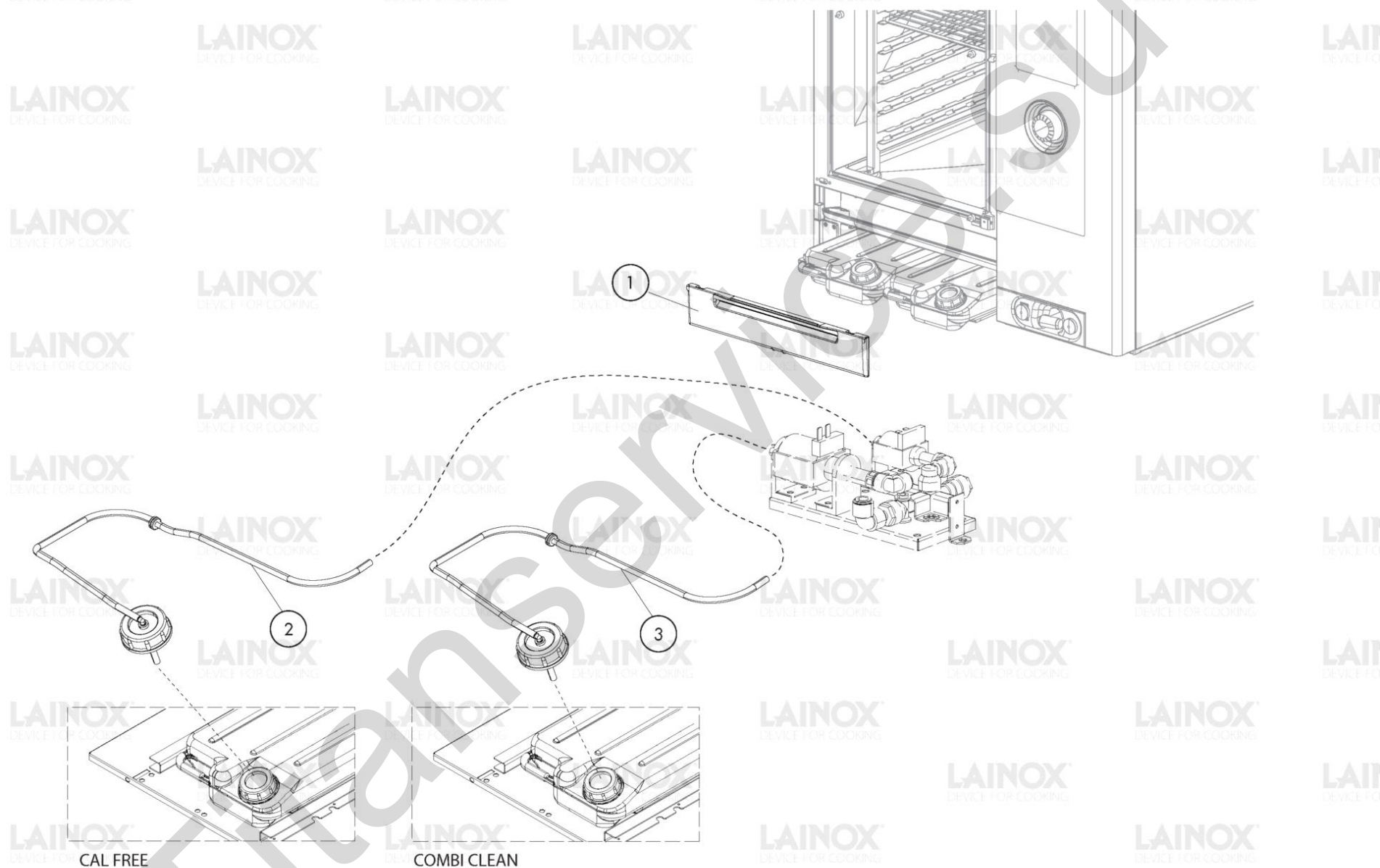


Warning! The exploded views refer to the general model

**TAV. E - SCS**

Pos.	Code	Previous code	Description	Notes	From:	To:	Price (€)
0001	LAR65110210		SOLENOID VALVE [C] 220V 50HZ 2 OUTLETS JG CONNECTION				38.10
0002	LA65110530	LAR65110530	MASS FLOW PURPLE REGULATOR [C] 2L/ MIN				5.10
0003	LA80120060	LAR80120060	TRANSPARENT SILICONE PIPE [C] SR60/ TR 7/12				24.40
0004	LA61630121	LAR61630121	SPRING BAND [C] D. 13,7MM				1.20
0005	LA62090938	LAR62090938	CONNECTOR [C] D.8				5.40
0006	LA65110690	LAR65110690	CONNECTOR [C]				30.00
0007	LA62090528	LAR62090528	CURVED CONNECTOR [C] 10X10				16.40
0008	LA80150000		LIGHT BLUE POLYETHYLENE PIPE [C] D. 10X7MM				6.40
0009	LA62090478	LAR62090478	INTERMEDIATE CURVED CONNECTOR [C] D. 10				16.40
0010	LA58006960		PERNO A 9 DIVIS.CASSETTI N/S 071-101 2014				
00C1	LAR14162590		COMPLETE DECALCIFER DRAWER [C]	50Hz			380.00
00C1	LAR14166030		CASSETTO DECALCIFICANTE COMPLETO 60Hz	60Hz			
00C2	LA69040030	LAR69040030	CAP [C] N/S 2014 D. 80				17.90
00C3	LA69040010	LAR69040010	RING NUT [C] D.80	Codice non più disponibile ordinare cassetto compl		2/6/2017	12.90
00C3	LA69040011		GHIERA D.80 CASS.MISCEL.DEC. N/S 2016				
00C4	LA69040050	LAR69040050	VAPORISER [C]				20.60
00C5	LA69040060	LAR69040060	FILTER [C] WASHING DRAWERS N/S 2014				21.80
00C6	LAR62090718		AIR FILTER [C]				24.50
00C7	LAR65260900A		MICROSWITCH [C] DRAWER SOLID CAL				61.80
00C8	LA65110300	LAR65110300	PUMP [C] 220V 50HZ	50Hz			68.60
00C8	LA65110310	LAR65110310	PUMP [C] 220V 60HZ	60Hz			64.00
00C9	LA65260910	LAR65260910	CONTROL [C]				41.90
00D1	LAR14162580		COMPLETE DETERGET DRAWER [C]	50Hz			360.00
00D1	LAR14166020		COMPLETE DETERGET DRAWER [C]	60Hz			362.90
00D2	LA69040040	LAR69040040	CAP [C] N/S 2014 D. 90				14.50
00D3	LA69040020	LAR69040020	RING NUT [C] D. 90	Codice non più disponibile ordinare cassetto compl		2/6/2017	0.00
00D3	LA69040021		RING NUT [C] D.90				26.00
00D4	LA69040050	LAR69040050	VAPORISER [C]				20.60

Pos.	Code	Previous code	Description	Notes	From:	To:	Price (€)
00D5	LA69040060	LAR69040060	FILTER [C] WASHING DRAWERS N/S 2014				21.80
00D6	LAR62090718		AIR FILTER [C]				24.50
00D7	LAR65260900K		MICROSWITCH [C] DRAWER SOLID CLEAN				62.50
00D8	LA65110300	LAR65110300	PUMP [C] 220V 50HZ	50Hz			68.60
00D8	LA65110310	LAR65110310	PUMP [C] 220V 60HZ	60Hz			64.00
00D9	LA65260910	LAR65260910	CONTROL [C]				41.90
0C10	LA69040140		RACCORDO POMPA CASSETTI DET/DIS				
0C11	LA69040150		MANICOTTO POMPA CASSETTI DET/DIS				
0D10	LA69040140		RACCORDO POMPA CASSETTI DET/DIS				
0D11	LA69040150		MANICOTTO POMPA CASSETTI DET/DIS				

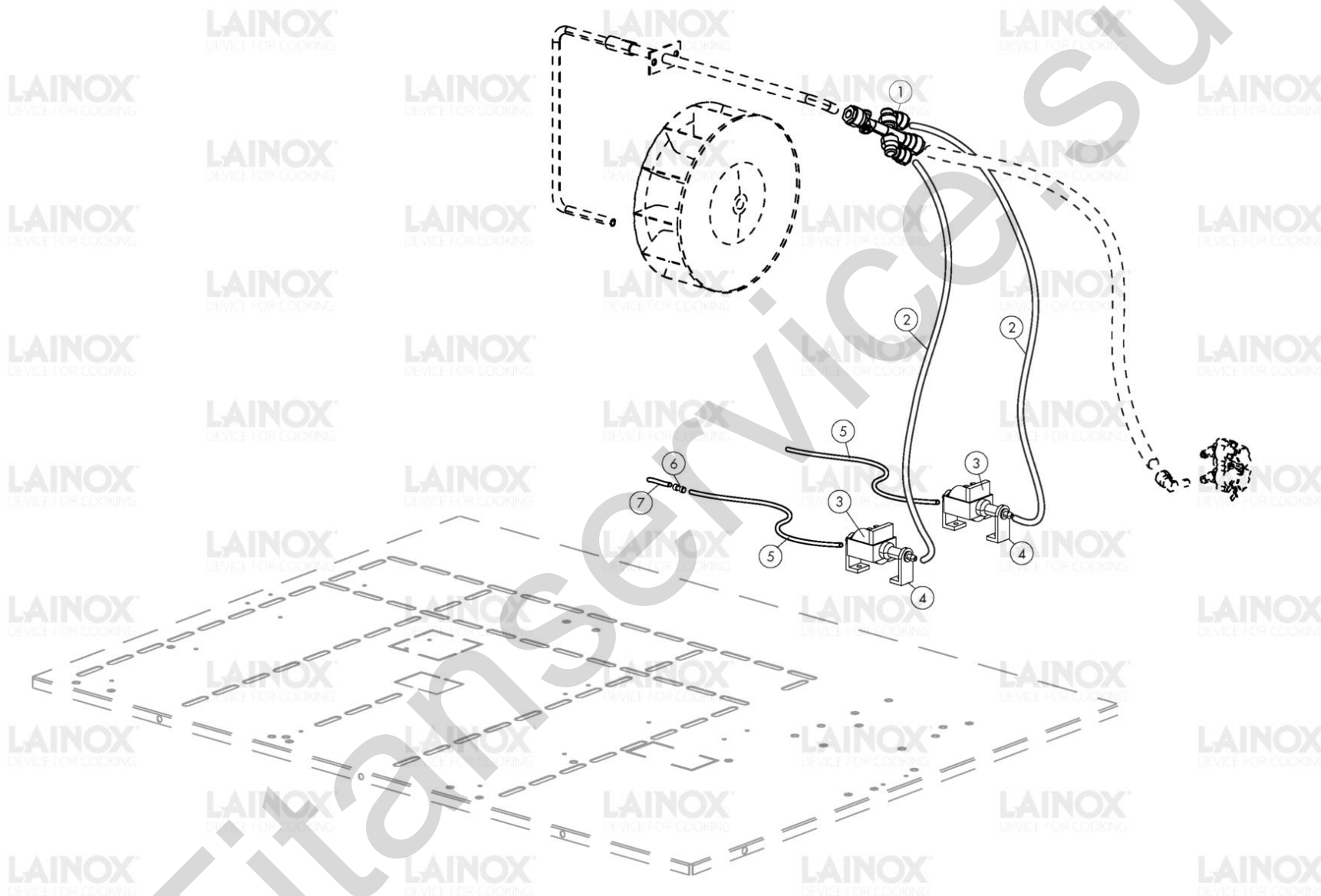


Warning! The exploded views refer to the general model

**TAV. F - LCS**



Pos.	Code	Previous code	Description	Notes	From:	To:	Price (€)
0001	LAR69180340		DOOR [C]				18.40
0002	LA14171811		PREM.TUBO DECALC.TANICA ANTIROTAZ.N/S071				65.00
0003	LA14171801		PREM.TUBO DETERG.TANICA ANTIROTAZ.N/S071				69.30



Warning! The exploded views refer to the general model

**TAV. G - SMOKEGRILL**

Pos.	Code	Previous code	Description	Notes	From:	To:	Price (€)
0001	LA62090898	LAR62090898	MANIFOLD [C]				52.90
0002	LA80150020	LAR80150020	TRANSPARENT POLIURETHANE PIPE [C] D. 8X6MM				7.40
0003	LAR65110620		PUMP [C] 230V 50HZ				45.00
0004	LA65110630	LAR65110630	SUPPORT [C] PUMP				14.70
0005	LA80150020	LAR80150020	TRANSPARENT POLIURETHANE PIPE [C] D. 8X6MM				7.40
0006	LA62090798	LAR62090798	STRAIGHT REDUCTION [C] D. 8-6				17.20
0007	LA80150030	LAR80150030	LLDPE PIPE [C] D. 6X4MM				2.80