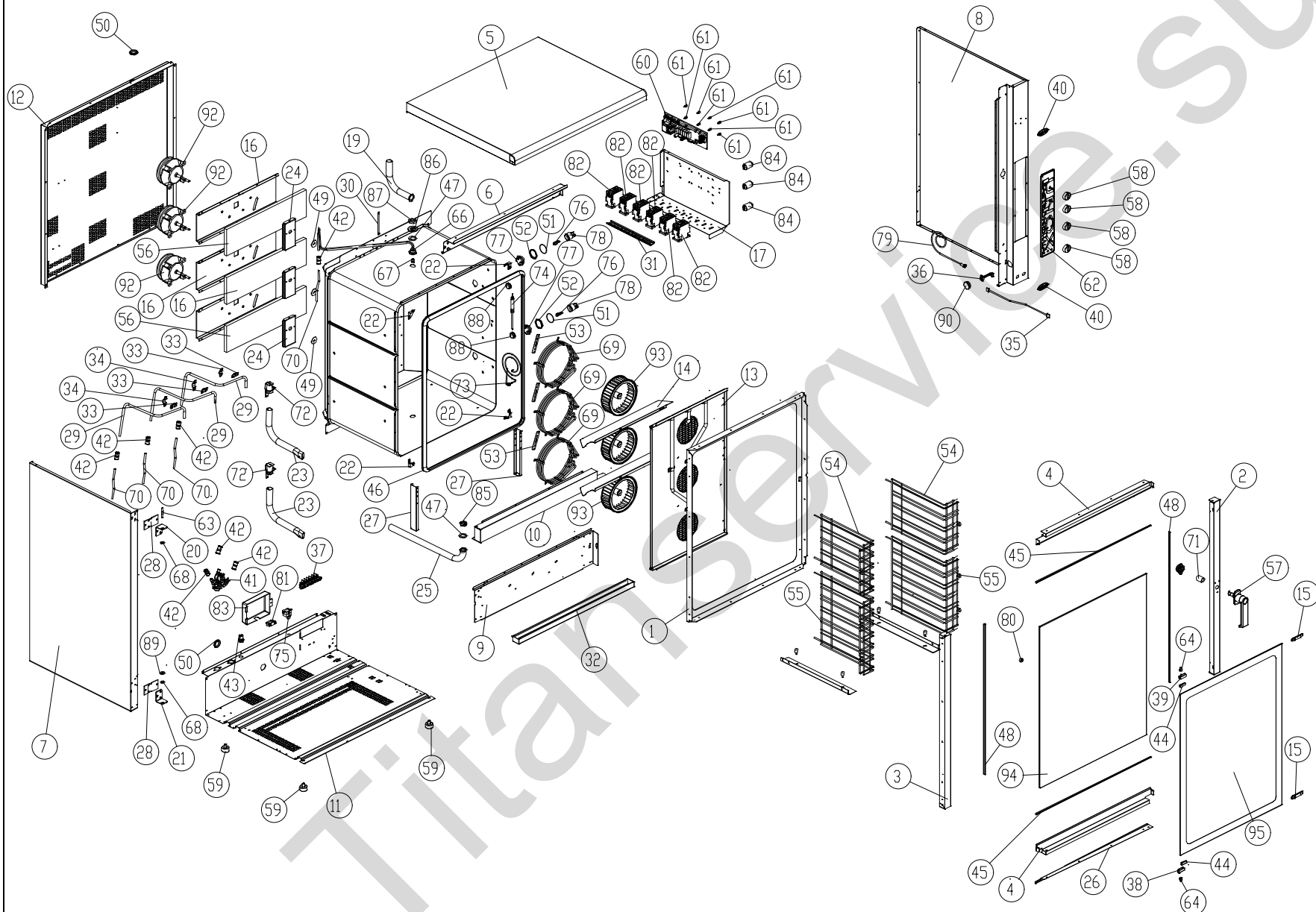


# MOD: XB803G

## EXPLODED VIEW DISEGNO ESPLOSO



### LEGEND - LEGENDA

1	OB1000A3	57	MG1000A0
2	OB1005A1	58	MN121A
3	OB1006A0	59	PD061A
4	OB1010A2	60	PE1010B1
5	OD1000B0	61	PE102
6	OD1010B0	62	PE1050B2
7	OD1060C0	63	RC1035A0
8	OD1061C0	64	RC1000B0
9	OD1075B0	66	RC1135A0
10	OD1095A1	68	RC540
12	OF1000C3	69	RS1050A0
13	OG1000C2	70	TB008
14	OG1005B1	71	TB1005A0
15	2H032	72	VE1135A0
16	OH2005A1	73	TR1005A2
17	OH1005E0	74	TR1000A4
19	OH1015A1	75	TR255B
20	OH1020A0	76	VE1005A1
21	OH1021A0	77	VE1010A1
22	OH1450A0	78	VE1015A1
23	OH1050A2	79	VE1020A0
25	OH1070A0	80	VE1030A1
26	OH1100A3	81	VE1075A0
27	OH1125A1	82	VE1095A0
28	OH1140A2	83	VE1100A0
29	OH1500A0	84	VE221
32	OM1000A2	85	VI1030A2
33	2H070	86	VI1235A0
34	2H072	87	VI1245A0
35	CE1000C0	88	VI1515A1
36	CE1005B0	89	VI524
37	CE212	90	VM1005A0
38	CR045	91	VM250
39	CR046	92	VN1000B0
40	ED1070A0	93	VN1025A2
41	EL1165A0	94	VT1000A0
42	EL1055A0	95	VT1002A0
43	EL1125A0		
44	GN006A		
45	GN100		
46	GN1000B0		
47	GN1010A0		
48	GN102		
49	GN1140A0		
50	GN1045A0		
51	GN1055A0		
52	GN1065A1		
53	GN224		
54	GRL1035A1		
55	GRL1040A1		

# MOD: XB803G

## EXPLODED VIEW DISEGNO ESPLOSO



### DESCRIZIONE CODICI

1	OB1000A3	PORTA INTERNA INOX SERIE 800 - GAS
2	OB1005A1	COLONNINA LATERALE DX INOX XB803
3	OB1006A0	COLONNINA LATERALE SX INOX XB803
4	OB1010A2	LISTELLO SUP/INF PORTA INOX SERIE XB
5	OD1000B0	COPERCHIO INOX SERIE XB
6	OD1010B0	PROFILO SUP. INOX FACCIA TA MUFFOLA XB803
7	OD1060C0	FIANCO SX INOX XG813
8	OD1061C0	FIANCO DX INOX XG813
9	OD1075B0	SUPPORTO FRONTALE INF. MUFFOLA XG
10	OD1095A1	CRUSCOTTO COPRI FACCIA TA INFERIORE SERIE XG
12	OF1000C3	SCHIENA INOX SERIE 800/GAS - 1000
13	OG1000C2	CARTER ARIA INOX SERIE 800 - GAS
14	OG1005B1	DIST. CARTER ARIA INOX STAND SERIE XB
15	2H032	LAMIERA FERMA PORTA FREDDA LAVATO
16	OH2005A1	PROFILO SOSTEGNO MOTORE XB603/803
17	OH1005E0	LAMIERA PORTACOMPONENTI SERIE XB-XV
19	OH1015A1	CAMINO FUMI D-EST=30 SP=1 INOX XB-XV
20	OH1020A0	STAFFA SUP. SUPPORTO PORTA
21	OH1021A0	STAFFA INFERIORE SUPP. PORTA
22	OH1450A0	ANGOLO FACCIA TA MUFFOLA INOX XB-XV-XG L.M.
23	OH1050A2	TUBO VENTURI D-EST=30 SP=1 INOX XB-XV-XG
25	OH1070A0	TUBO SCARICO INOX ø30x1.5
26	OH1100A3	PROF. SALVA GOCCIA INOX SERIE XB
27	OH1125A1	STAFFA SOSTEGNO MUFFOLA SERIE XG
28	OH1140A2	CONTROSTAFFA PORTA XB-XG-XV
29	OH1500A0	TUBO ESTERNO UMIDITA' SERIE XB-XV
32	OM1000A2	CASSETTO RACCOGLI GOCCIE
33	2H070	PROFILO FERMA TUBO UMIDITA' LAVATO
34	2H072	OMEGA DOPPIO FERMATUBO U.M. XV401/501/XG410
35	CE1000C0	CAVO COLL. SCHEDA POT-CONTR 4 FILI VERS. 2003 IUL CSA CON
36	CE1005B0	CAVO COLLEG. SCHEDA CONNETT.DB9F RS232 VERS. 2003
37	CE212	MORSETT. 5FK/7FTW GV V0 00160593
38	CR045	CERN.DX INOX XV-XL-XB
39	CR046	CERN.SX INOX XV-XL-XB
40	ED1070A0	ETICHETTA UNOX ELISSE 78x33 ARGENTO CON BORDO EST.
41	EL1165A0	ELETT. TRIPLA ATT. J.GUEST INCORPORATO CON RID.ROSSO TAR
42	EL1055A0	RIDUZIONE J.G. DA D=10 A D=8 PM201008E
43	EL1125A0	PASSAPARETE ø8
44	GN006A	GUARN.PORTA FREDDA A BAND. PTFE CAR/CARB Sp=1mm
45	GN100	PROFILO PORTA SIL NERO P346 XT
46	GN1000B0	GUARNIZIONE NERA 50 SHORE FORNI XB-XG-XV
47	GN1010A0	GUARN.PTFE+CARB NUOVO SCARICO ø42x28,5x2
48	GN102	PROFILO PORTA SIL NERO C121 XT
49	GN1140A0	GUARNIZIONE PORTAMOTORE STAMP. ALBERO MOT. D10 XB-X
50	GN1045A0	GUARN.ANTIVIBR. CAMINO-SCARICO ø131-øe39,9-Sp=7,5
51	GN1055A0	OR 46x2 VMQ 70 ROSSO
52	GN1065A1	GUARNIZIONE PORTALAMPADA DE=53.2 DI=44.2 SP=3.2 PTFE P
53	GN224	GUARN.PTFE+CARB 100x22x0,8sp-c/fori 1999
54	GRL1035A1	GRIGLIA LAT. DX/SX INOX 5TG GN
55	GRL1040A1	GRIGLIA LAT. DX/SX INOX 7TG GN

57	MG1000A0	NUOVA MANIGLIA STANDARD
58	MN121A	MANOPOLA CON INDICE NON SERIGRAFATO '04
59	PD061A	PIEDINO M10 D=35 H=20 NERO OPACO
60	PE1010B1	SCHEDA DI POTENZA LINEA PROFESSIONAL VER. 2003.NET
61	PE102	SUPPORTO PER SCHEDA 24POT98
62	PE1050B2	CONTROLLO VERTICALE COMPLETO GASTRONOMIA
63	RC1035A0	PERNO FILETTATO SUP. PORTA XB-XV-XG
64	RC1000B0	BOCCOLA INOX SUPP. VETRO STANDAR
66	RC1135A0	RACC.PORTA GIRANTE CON TUBO 0H1775A0 SALDATO
68	RC540	BOCCOLA BRONZO STAFFE SUPP. PORTA XV501
69	RS1050A0	RESISTENZA CIRCOLARE 3000W+2000W 230V INCOLOY 5 GIRI
70	TB008	TUBO PE 7,93x4,75 TRASPARENTE
71	TB1005A0	TUBO SIL. NERO 27x17 55/65 Sh
72	VE1135A0	ATTUATORE VENTURI 220V 50/60 Hz SERIE 2
73	TR1005A2	SONDA DI TEMP. CON PASSAPARETE DOPPIA SALD AISI316L
74	TR1000A4	SONDA AL CUORE MANICO LISCIO
75	TR255B	TERMOSTATO SIC.+UNIPOL.330°C Ty95H L=1300mm
76	VE1005A1	LAMPADA ALOGENA 40W 230V
77	VE1010A1	VETRO COPRI LAMPADA TEMPERATO ANTISHOCK
78	VE1015A1	PORTA LAMPADA SERIE 2 PER LAMPADA ALOGENA
79	VE1020A0	MICROINTERRUTTORE PORTA MAGNETICO
80	VE1030A1	CALAMITA D=22,9mm PER MICROPORTA
81	VE1075A0	PRESSACAVO FV 268 RO
82	VE1095A0	TELERUTTORE GE 25A 230V 50/60 Hz CL01A400T6
83	VE1100A0	SCATOLA COPRI MORSETTIERA NYLON XBT/XVT
84	VE221	CONDENSICAR PRL 5uf 450V FASTON
85	VI1030A2	TAPPO FRESATO PER NUOVO SCARICO
86	VI1235A0	RONDELLA PIANA 50x28x4 INOX
87	VI1245A0	DADO 3/4" H=10 INOX FISSAGGIO PORTA GIRANTE
88	VI1515A1	SUPPORTO Sonda AL CUORE CON CAVA PER FILO INOX
89	VI524	RONDELLA 6x24x2 INOX
90	VM1005A0	COPRITESTA ROTONDO ABS NERO 40x2
91	VM250	MORSETT.A PETTINE
92	VN1000B0	MOTORE COND.5uf 200W ALB.M8 CONN.5 POLI
93	VN1025A2	VENTOLA D=196 H=61 38 PALE INOX DADO M8
94	VT1000A0	VETRO INT.944x764x6 TFL XB803 - XB803G
95	VT1002A0	VETRO EST.SER730x943x4 BETFLGRIGIO XB803G

### DESCRIPTION

1	OB1000A3	
2	OB1005A1	
3	OB1006A0	STAINLESS STEEL DOOR RIGHT LATERAL COLUMN XB803
4	OB1010A2	STAINLESS STEEL UPPER/LOWER DOOR LISTEL SERIE XB
5	OD1000B0	STAINLESS STEEL COVER SERIE XB
6	OD1010B0	
7	OD1060C0	
8	OD1061C0	
9	OD1075B0	
10	OD1095A1	BOTTOM PANEL SERIE XG
12	OF1000C3	STAINLESS STEEL BACK PANEL 800/GAS - 1000
13	OG1000C2	STAINLESS STEEL FAN GUARD SERIE 800 - GAS
14	OG1005B1	
15	2H032	WASHED METAL HOLDER FOR COOL DOOR
16	OH2005A1	MOTOR SUPPORT PROFILE XB603/803
17	OH1005E0	
19	OH1015A1	
20	OH1020A0	UPPER BRACKET TO HOLD THE DOOR
21	OH1021A0	LOWER BRACKET TO HOLD THE DOOR
22	OH1450A0	STAINLESS STEEL MUFFLE FRONT FACE ANGLE XB-XV-XG-L.M.
23	OH1050A2	
25	OH1070A0	STAINLESS STEEL DRAIN PIPE ø30x1.5
26	OH1100A3	
27	OH1125A1	
28	OH1140A2	DOOR COUNTERSTIRRUP XB-XG-XV
29	OH1500A0	EXTERNAL HUMIDITY TUBE NEW LINE STAND
32	OM1000A2	DRIP TRAY
33	2H070	WASHED PROFILE TO HOLD HUMIDITY TUBE
34	2H072	DOUBLE BRACKET TO FIX WATER PIPE XV401/501/XG410
35	CE1000C0	CONNECTION CABLE POWER - CONTROL CARD 4 WIRES VERS. 20
36	CE1005B0	CONNECTION CABLE CONTROL-CONNETT.DB9F RS 232 VERS. 20
37	CE212	TERMINAL BOARD 5FK/7FTW GV V0 00160593
38	CR045	RIGHT STAINLESS STEEL HINGE XV-XL-XB
39	CR046	LEFT STAINLESS STEEL HINGE XV-XL-XB
40	ED1070A0	UNOX ELLIPTICAL STICKER 78x33-SILVER WITH EXTERNAL FRAME
41	EL1165A0	3 INLETS WATER ELECTROVALVE + J.G. CONN. INCL W/ RED CALR
42	EL1055A0	J.G. REDUCTION FROM D=10 TO D=8 PM201008E
43	EL1125A0	WALL PASSING SEAL ø8
44	GN006A	COLD DOOR SEAL PTFE CAR/CARB Thickness=1mm
45	GN100	DOOR BLACK SEAL P346 XT
46	GN1000B0	BLACK DOOR SEAL 50 SHORE OVENS XB-XG-XV
47	GN1010A0	SEAL PTFE+CARB NEW DRAIN ø42x28,5x2
48	GN102	BLACK SILICON DOOR PROFILE C121 XT
49	GN1140A0	MOTOR GASKET
50	GN1045A0	ANTIVIBR SEAL FOR EXHAUST CHIMNEY ø131-øe39,9-Sp=7,5
51	GN1055A0	OR 46x2 VMQ 70 RED
52	GN1065A1	SEAL FOR LAMP GLASS COVER (PURE PTFE) DE=53.2 DI=44.2 TH=
53	GN224	PTFE+CARB 100x22x0,8sp-w/holes 1999 GASKET
54	GRL1035A1	STAINLESS STEEL RIGHT/LEFT LATERAL SUPPORT 5TG GN
55	GRL1040A1	STAINLESS STEEL RIGHT/LEFT LATERAL SUPPORT 7TG GN

57	MG1000A0	NEW STANDARD HANDLE
58	MN121A	KNOB WITH NON SERIGRAPHED INDEX '04
59	PD061A	SMALL FOOT M10 D=35 H=20 BLACK OPAQUE
60	PE1010B1	PROFESSIONAL POWER CARD VER. 2003.NET
61	PE102	SUPPORT FOR CARD 24POT98
62	PE1050B2	COMPLETE VERTICAL CONTROL GASTRONOMY
63	RC1035A0	THREADED DOOR TOP XB-XV-XG
64	RC1000B0	STAINLESS STEEL UPPER BUSHING FOR GLASS
66	RC1135A0	ROTOR SUPPORT CONNECTION WITH WELDED TUBE 0H1775A0
68	RC540	BRONZE BUSHING FOR STIRRUP TO HOLD DOOR XV501
69	RS1050A0	CIRC.HEAT.ELEMENT 3000W+2000W 230 V INCOLOY 5 RODS
70	TB008	TRANSPARENT TUBE PE 7,93x4,75
71	TB1005A0	BLACK SILICONE PIPE 27x17 55/65 Sh
72	VE1135A0	VENTURI ACTUATOR 220 V 50/60 Hz SERIES 2
73	TR1005A2	TEMPERATE PROBE WITH WALL PASSING NUT-DOUBLE WELDING
74	TR1000A4	
75	TR255B	SAFETY THERMOSTAT+UNIPOL. 330°C Ty95H L=1300mm
76	VE1005A1	HALOGEN LAMP 40W
77	VE1010A1	TEMPERED LIGHT BULB GLASS COVER
78	VE1015A1	LAMP HOLDER SERIE 2 FOR HALOGEN LAMP
79	VE1020A0	MAGNETIC DOOR MICROSWITCH
80	VE1030A1	MAGNET FOR DOOR MICROSWITCH D=22,9mm
81	VE1075A0	CABLE PRESS FV 268 RO
82	VE1095A0	REMOTE CONTROL SWITCH GE 25A 230V 50/60 Hz CL01A400T6
83	VE1100A0	TERMINAL BOARD BLACK NYLON COVER XBT/XVT
84	VE221	ICAR CONDENSER PRL 5uf 450V FASTON
85	VI1030A2	MILLED LID FOR NEW DRAIN PIPE
86	VI1235A0	STAINLESS STEEL FLAT WASHER 50x28x4
87	VI1245A0	STAINLESS STEEL 3/4" H=10 NUT TO FIX ROTATING ARM
88	VI1515A1	STAINLESS STEEL CORE PROBE SUPPORT WITH CANAL FOR CABLE
89	VI524	STAINLESS STEEL WASHER 6x24x2
90	VM1005A0	ROUND HEAD COVER BLACK ABS 40x2
91	VM250	"COMB" TERMINAL BOARD
92	VN1000B0	MOTOR COND.5uf 200W ALB.M8 CONN.5 TERMINALS
93	VN1025A2	FAN D=196 H=61 38 BLADES STAINLESS STEEL NUT M8
94	VT1000A0	INTERNAL GLASS 944x764x6 TFL XB803 - XB803G
95	VT1002A0	EXTERNAL GREY SER.GLASS 730x943x4 BETFL XB803G