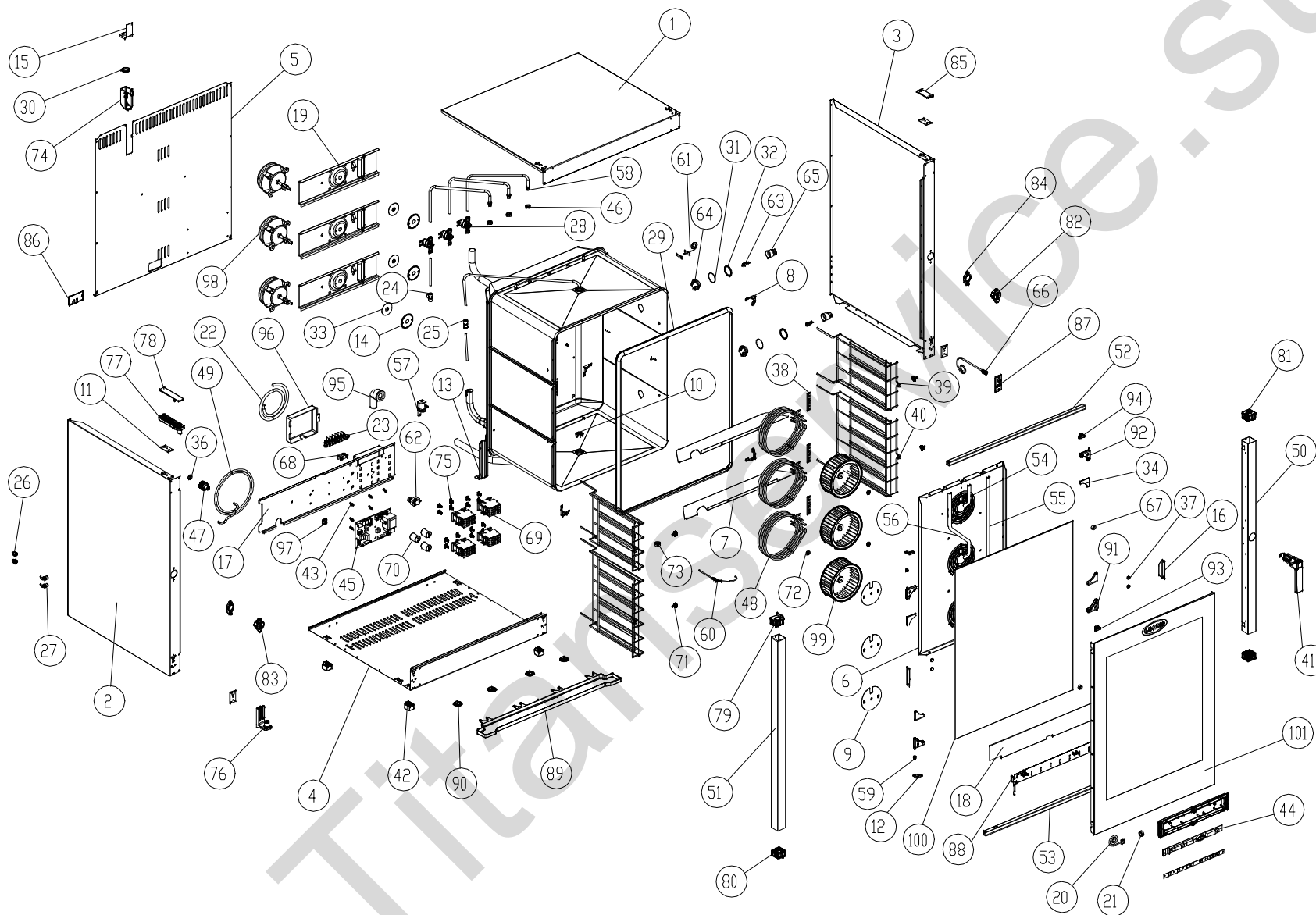


# MOD: XBC804

## EXPLODED VIEW DISEGNO ESPLOSO



### LEGEND - LEGENDA

|    |          |     |          |
|----|----------|-----|----------|
| 1  | OD1600A0 | 56  | TB1107B0 |
| 2  | OD1605B0 | 57  | VE1135A0 |
| 3  | OD1606B0 | 58  | TB1515A0 |
| 4  | OE1180A0 | 59  | TF1010A0 |
| 5  | OF1205B0 | 60  | TR1041A2 |
| 6  | OG1235B0 | 61  | TR1096A0 |
| 7  | OG1250A0 | 62  | TR255B   |
| 8  | OH1450A0 | 63  | VE1005A2 |
| 9  | OH3915A0 | 64  | VT1195A0 |
| 10 | OH2550A0 | 65  | VE1015A1 |
| 11 | OH2560A0 | 66  | VE1020A0 |
| 12 | OH2650A0 | 67  | VE1030A1 |
| 13 | OH2730A0 | 68  | VE1075A0 |
| 14 | OH3020A0 | 69  | VE1095A0 |
| 15 | OH3042A0 | 70  | VE221    |
| 16 | OH3045A0 | 71  | VI1035A1 |
| 17 | OH3150B0 | 72  | VI1335A0 |
| 18 | OH3155A0 | 73  | VI1515A1 |
| 19 | OH3560A1 | 74  | VM1065A0 |
| 21 | CE1285A0 | 75  | VM1075A1 |
| 23 | CE212    | 76  | VM1160A0 |
| 24 | EL1020A0 | 77  | VM1165A0 |
| 25 | EL1055A0 | 78  | VM1166A0 |
| 26 | EL1185A0 | 79  | VM1170A0 |
| 27 | EL1195A0 | 80  | VM1171A0 |
| 28 | EL1250A0 | 81  | VM1175A0 |
| 29 | GN1000B0 | 82  | VM1190A1 |
| 30 | GN1045A0 | 83  | VM1191A1 |
| 31 | GN1055A0 | 84  | VM1192A0 |
| 32 | GN1065A1 | 85  | VM1195A0 |
| 33 | GN1140A0 | 87  | VM1201A0 |
| 34 | GN1180A0 | 88  | VM1207A0 |
| 35 | GN1285A0 | 89  | VM1217A0 |
| 36 | GN1200A0 | 90  | VM1220A0 |
| 37 | GN1205A0 | 91  | VM1230A0 |
| 38 | GN224    | 92  | VM1231A0 |
| 39 | GR1000A0 | 93  | VM1235A0 |
| 40 | GR1005A0 | 94  | VM1236A0 |
| 41 | VM1180A0 | 95  | VM1260A0 |
| 42 | PD1001A0 | 96  | VM1310A0 |
| 43 | PE102    | 97  | VM250    |
| 44 | PE1610A2 | 98  | VN1000B0 |
| 45 | PE1365C2 | 99  | VN1030A2 |
| 46 | RC1170A1 | 100 | VT1140A0 |
| 47 | RC1210A1 | 101 | VT1141B0 |
| 48 | RS1150A0 |     |          |
| 49 | TB008    |     |          |
| 50 | TB1085B0 |     |          |
| 51 | TB1086B0 |     |          |
| 52 | TB1100A0 |     |          |
| 53 | TB1101A0 |     |          |
| 54 | TB1105A0 |     |          |
| 55 | TB1106B0 |     |          |

# MOD: XBC804

## EXPLODED VIEW DISEGNO ESPLOSO



### DESCRIZIONE CODICI

|    |          |  |
|----|----------|--|
| 1  | OD1600A0 | COPERCHIO INOX XBC404/604/804            |
| 2  | OD1605B0 | FIANCO SX INOX XBC804                    |
| 3  | OD1606B0 | FIANCO DX INOX XBC804                    |
| 4  | OE1180A0 | FONDO ESTERNO INOX XBC404/604/804        |
| 5  | OF1205B0 | SCHIENA INOX XBC804                      |
| 6  | OG1235B0 | CARTER ARIA INOX XBC804                  |
| 7  | OG1250A0 | DIVISORIO CARTER ARIA INOX XBC404/604/8  |
| 8  | OH1450A0 | ANGOLO FACCIAIA MUFFOLA INOX XB-XV-XG    |
| 9  | OH3915A0 | DISCO RIDUZIONE PORTATA ARIA ASOLE       |
| 10 | OH2550A0 | TAPPO PER TUBO DI SCARICO INOX C.T.      |
| 11 | OH2560A0 | CONTROSTAFFA ZINCATA PORTA C.T.          |
| 12 | OH2650A0 | CERNIERA INOX VETRO INTERNO XVC204/304/  |
| 13 | OH2730A0 | STAFFA ZINCATA SOSTEGNO MUFFOLA          |
| 14 | OH3020A0 | DISCO TENUTA ALBERO MOTORE INOX          |
| 15 | OH3042A0 | COPERCHIO CAMINO INOX XBC404/604/804     |
| 16 | OH3045A0 | LAMIERINO PREMI VETRO INOX XVC704 XBC804 |
| 17 | OH3150B0 | PROFILO PORTA COMP INOX XBC404/604/804   |
| 18 | OH3155A0 | PROFILO PARACALORE CRUSCOTTO INOX        |
| 19 | OH3560A1 | PROFILO PORTA MOTORI ZINCATO XBC-XB-XV   |
| 21 | CE1285A0 | FERRITE EMI ROUND MOD. 2643801502        |
| 23 | CE212    | MORSETT. 5FK/7FTW GV VO 00160593         |
| 24 | EL1020A0 | RACCORDO INTERMEDIO "T" TUBO ø8          |
| 25 | EL1055A0 | RIDUZIONE J.G. DA D=10 A D=8 PM201008E   |
| 26 | EL1185A0 | RACCORDO A GOMITO J.GUEST Ø8 - Ø8        |
| 27 | EL1195A0 | RACCORDO A GOMITO CON J.GUEST            |
| 28 | EL1250A0 | ELETTROVALVOLA H2O 1 VIA RID.            |
| 29 | GN1000B0 | GUARNIZIONE NERA 50 SHORE FORNI XB-XG-XV |
| 30 | GN1045A0 | GUARN. ANTIVIBR. CAMMINO-SCARICO         |
| 31 | GN1055A0 | OR 46x2 VMQ 70 ROSSO                     |
| 32 | GN1065A1 | GUARNIZIONE PORTALAMPADA DE=53.2         |
| 33 | GN1140A0 | GUARNIZIONE PORTAMOTORE STAMP.           |
| 34 | GN1180A0 | GUARNIZIONE CERNIERE VETRO INT.          |
| 35 | GN1285A0 | GUARNIZIONE SONDA DI TEMPERATURA NTC     |
| 36 | GN1200A0 | GUARNIZIONE D=24 RACCORDO 3/4 GOMMA+RETE |
| 37 | GN1205A0 | GUARNIZIONE PREMI VETRO CARBOGRAFITE     |
| 38 | GN224    | GUARN.PTFE+CARB 100x22x0,8sp-c/fori 1999 |
| 39 | GR1000A0 | GRIGLIA LAT. INOX PASTICCERIA 4TG        |
| 40 | GR1005A0 | GRIGLIA LAT. INOX PASTICCERIA 6TG        |
| 41 | VM1180A0 | IMPUGNATURA MANIGLIA XVC204/304/504/704  |
| 42 | PD1001A0 | PIEDINO 35X35 H26 PLASTICA+GOMMA GRIGIO  |
| 43 | PE102    | SUPPORTO PER SCHEDA 24POT98              |
| 44 | PE1610A2 | ASSIEME SCHEDA CONTR. PE1355D2           |
| 45 | PE1365C2 | SCHEDA POTENZA FORNI COMBINATI           |
| 46 | RC1170A1 | DADO M14 H=8 CH=22 INOX                  |
| 47 | RC1210A1 | RACCORDO 3/4 VALVOLA DI NON RITORNO      |
| 48 | RS1150A0 | RESISTENZA CIRC. D=230 5 SPIRE           |
| 49 | TB008    | TUBO PE 7,93x4,75 TRASPARENTE            |
| 50 | TB1085B0 | COLONNINA LATERALE DX INOX PORTA XBC804  |
| 51 | TB1086B0 | COLONNINA LATERALE SX INOX PORTA XBC804  |
| 52 | TB1100A0 | LISTELLO QUADRO SUP PORTA INOX           |
| 53 | TB1101A0 | LISTELLO QUADRO INF PORTA INOX           |
| 54 | TB1105A0 | TUBO INTERNO UMIDITA D=16 SP=1           |
| 55 | TB1106B0 | TUBO INTERNO UMIDITA DX D=16 SP=1        |

|     |          |   |
|-----|----------|---|
| 56  | TB1107B0 | TUBO INTERNO UMIDITA SX D=16 SP=1         |
| 57  | VE1135A0 | ATTUATORE VENTURI 220V 50/60 Hz SERIE 2   |
| 58  | TB1515A0 | TUBO ESTERNO UMIDITA + RACCORDO           |
| 59  | TF1010A0 | BOCCOLA TEFLOX CERNIERA VETRO             |
| 60  | TR1041A2 | SONDA AL CUORE STAMPATA L=2000            |
| 61  | TR1096A0 | SONDA TEMPERATURA NTC 150 L=1500          |
| 62  | TR255B   | TERMOSTATO SIC.+UNIPOL.330°C Ty95H        |
| 63  | VE1005A2 | LAMPADA HALOPIN ES H66733ES 33W           |
| 64  | VT1195A0 | VETRO COPRI LAMPADA BOROSILICATO TEMPRATO |
| 65  | VE1015A1 | PORTA LAMPADA SERIE 2 PER LAMPADA         |
| 66  | VE1020A0 | MICROINTERRUTTORE PORTA MAGNETICO         |
| 67  | VE1030A1 | CALAMITA D=22,9mm PER MICROPORTA          |
| 68  | VE1075A0 | PRESSACAPO FV 268 RO+VITI FISSAGGIO       |
| 69  | VE1095A0 | TELERUTTORE GE 25A 230V 50/60             |
| 70  | VE221    | CONDENS.ICAR Suf 450V FASTON              |
| 71  | VI1035A1 | NOTTOINO M6x12,5 CON TAGLIO OTT.CROM.FE   |
| 72  | VI1335A0 | DISTANZIALE VENTOLE INOX                  |
| 73  | VI1515A1 | SUPPORTO SONDA AL CUORE CON CAVA          |
| 74  | VM1065A0 | CUFFIA COPRI CAMINO FUMI L.M.             |
| 75  | VM1075A1 | CLIP DI FISSAGGIO PER TELERUTTORI         |
| 76  | VM1160A0 | STAFFA INFERIORE PORTA XVC204/304/504/7   |
| 77  | VM1165A0 | STAFFA SUPERIORE PORTA XVC204/304/504/7   |
| 78  | VM1166A0 | COPERCHIO STAFFA SUPERIORE PORTA          |
| 79  | VM1170A0 | TAPPO FULCRO SUPERIORE PORTA XVC204/304   |
| 80  | VM1171A0 | TAPPO FULCRO INFERIORE PORTA XVC204/304   |
| 81  | VM1175A0 | TAPPO ESTETICO COLONNINA PORTA            |
| 82  | VM1190A1 | SCROCCO MANIGLIA DX XVC204/304/504/704    |
| 83  | VM1191A1 | 6CROCCO MANIGLIA SX XVC204/304/504/704    |
| 84  | VM1192A0 | COPERCHIO SCROCCO MANIGLIA XVC204/304/5   |
| 85  | VM1195A0 | PIASTRINA COPRIFORI XVC204/304/504/704    |
| 87  | VM1201A0 | PIASTRINA SUPPORTO MICROPORTA MAGNETICO   |
| 88  | VM1207A0 | PROFILO SALVAGOCIA PORTA XBC404/604/804   |
| 89  | VM1217A0 | CASSETTO RACCOGLIGOCCE XBC404/604/804     |
| 90  | VM1220A0 | CLIP FISSAGGIO CASSETTO RACCOGLIGOCCE     |
| 91  | VM1230A0 | CERNIERA SUP. ALLUMINIO VETRO             |
| 92  | VM1231A0 | CERNIERA INF. ALLUMINIO VETRO             |
| 93  | VM1235A0 | FERMA VETRO INTERNO SUP. XVC204/304/504   |
| 94  | VM1236A0 | FERMA VETRO INTERNO INF. XVC204/304/504   |
| 95  | VM1260A0 | CURVA A 90° RACCORDO SCARICO              |
| 96  | VM1310A0 | SCATOLA COPRI MORSETTIERA XB/XV/XVC/XG    |
| 97  | VM250    | MORSETT.A PETTINE                         |
| 98  | VN1000B0 | MOTORE COND.Suf 200W ALB.M8 CONN.5 POLI   |
| 99  | VN1030A2 | VENTOLA D=196 H=81 38 PALE INOX DADO M8   |
| 100 | VT1140A0 | VETRO INTERNO 743X940X6 BETFL             |
| 101 | VT1141B0 | VETRO ESTERNO SER. 757X1063X5             |

### DESCRIPTION

|    |          |   |
|----|----------|---|
| 1  | OD1600A0 | STAINLESS STEEL COVER XBC404/604/804    |
| 2  | OD1605B0 | STAINLESS STEEL LEFT SIDE XBC804        |
| 3  | OD1606B0 | STAINLESS STEEL RIGHT SIDE XBC804       |
| 4  | OE1180A0 | STAINLESS STEEL EXTERNAL BOTTOM         |
| 5  | OF1205B0 | STAINLESS STEEL BACK PLATE XBC804       |
| 6  | OG1235B0 | STAINLESS STEEL FAN GUARD XBC804        |
| 7  | OG1250A0 | STAINLESS STEEL FAN GUARD PARTITION     |
| 8  | OH1450A0 | STAINLESS STEEL MUFFLE FRONT FACE       |
| 9  | OH3915A0 |   |
| 10 | OH2550A0 | STAINLESS STEEL COVER FOR DRAIN         |
| 11 | OH2560A0 | ZINC PLATED DOOR COUNTERSTIRRUP C.T.    |
| 12 | OH2650A0 | STAINLESS STEEL INTERNAL GLASS          |
| 13 | OH2730A0 | ZINC PLATED MUFFLE SUPPORT BRACKET      |
| 14 | OH3020A0 | STAINLESS STEEL SEALING DISC FOR MOTOR  |
| 15 | OH3042A0 | STAINLESS STEEL EXHAUST PIPE COVER      |
| 16 | OH3045A0 | STAINLESS STEEL PLATE FOR GLASS         |
| 17 | OH3150B0 | STAINLESS STEEL COMPONENTS HOLDER       |
| 18 | OH3155A0 | STAINLESS STEEL BOARD HEAT PROTECTION   |
| 19 | OH3560A1 | MOTOR SUPPORT PROFILE XBC               |
| 21 | CE1285A0 | EMI ROUND FERRITE MOD.2643801502        |
| 23 | CE212    | TERMINAL BOARD 5FK/7FTW GV VO 00160593  |
| 24 | EL1020A0 | INTERMEDIATE "T" CONNECTION ø8          |
| 25 | EL1055A0 | STRAIGHT REDUCTION FROM D=10 TO         |
| 26 | EL1185A0 | ELBOW CONNECTION J. GUEST Ø8 - Ø8       |
| 27 | EL1195A0 | ELBOW UNION WITH J.GUEST TERMINAL       |
| 28 | EL1250A0 | WATER SOLENOID VALVE 1-WAY RED          |
| 29 | GN1000B0 | BLACK DOOR SEAL 50 SHORE OVENS XB-XG-XV |
| 30 | GN1045A0 | ANTIVIBR.SEAL FOR EXHAUST CHIMNEY       |
| 31 | GN1055A0 | OR 46x2 VMQ 70 RED                      |
| 32 | GN1065A1 | SEAL FOR LAMP GLASS COVER (PURE         |
| 33 | GN1140A0 | MOTOR GASKET                            |
| 34 | GN1180A0 | INTERNAL GLASS HINGE CARBOGRAPHITE      |
| 35 | GN1285A0 |   |
| 36 | GN1200A0 | 3/4 CONNECTION SEAL D=24 RUBBER+NET     |
| 37 | GN1205A0 | CARBONOGRAPHITE GASKET FOR GLASS        |
| 38 | GN224    | PTFE+CARB 100x22x0,8sp-w/holes          |
| 39 | GR1000A0 | STAINLESS STEEL LATERAL SUPPORT         |
| 40 | GR1005A0 | STAINLESS STEEL LATERAL SUPPORT 6 TRAYS |
| 41 | VM1180A0 | HANDLE HAFT XVC204/304/504/704          |
| 42 | PD1001A0 | FOOT 35X35 H26 GREY PLASTIC+RUBBER      |
| 43 | PE102    | SUPPORT FOR CARD 24POT98                |
| 44 | PE1610A2 | CONTROL BOARD PE1355 + BOARD COVER      |
| 45 | PE1365C2 |   |
| 46 | RC1170A1 | STAINLESS STEEL NUT M14 H=8 CH=22       |
| 47 | RC1210A1 |   |
| 48 | RS1150A0 | CIRC.HEAT. ELEMENT D=230 5 TURNS        |
| 49 | TB008    | TRANSPARENT TUBE PE 7,93x4,75           |
| 50 | TB1085B0 |   |
| 51 | TB1086B0 |   |
| 52 | TB1100A0 | DOOR STAINLESS STEEL UPPER SQUARE       |
| 53 | TB1101A0 | DOOR STAINLESS STEEL LOWER SQUARE       |
| 54 | TB1105A0 | STAINLESS STEEL INNER WATER TUBE        |
| 55 | TB1106B0 | STAINLESS STEEL INNER WATER TUBE        |

|     |          |  |
|-----|----------|--|
| 56  | TB1107B0 | STAINLESS STEEL INNER WATER TUBE         |
| 57  | VE1135A0 | VENTURI ACTUATOR 220 V 50/60 Hz SERIES 2 |
| 58  | TB1515A0 | STAINLESS STEEL EXTERNAL WATER           |
| 59  | TF1010A0 | TEFLON BUSHING FOR INTERNAL GLASS        |
| 60  | TR1041A2 | MOLDED CORE PROBE L=2000                 |
| 61  | TR1096A0 |  |
| 62  | TR255B   | SAFETY THERMOSTAT+UNIPOL. 330°C          |
| 63  | VE1005A2 | HALOGEN LAMP 33W ENERGY SAVER            |
| 64  | VT1195A0 |  |
| 65  | VE1015A1 | LAMP HOLDER SERIE 2 FOR HALOGEN LAMP     |
| 66  | VE1020A0 | MAGNETIC DOOR MICROSWITCH                |
| 67  | VE1030A1 | MAGNET FOR DOOR MICROSWITCH D=22,9mm     |
| 68  | VE1075A0 | CABLE PRESS FV 268 RO                    |
| 69  | VE1095A0 | REMOTE CONTROL SWITCH GE 25A 230V        |
| 70  | VE221    | ICAR CONDENSER PRL Suf 450V FASTON       |
| 71  | VI1035A1 | CHROMIUM PLATED BRASS NUT M6x12,5        |
| 72  | VI1335A0 | STAINLESS STEEL FANS SPACER              |
| 73  | VI1515A1 | STAINLESS STEEL CORE PROBE SUPPORT       |
| 74  | VM1065A0 | PLASTIC COVER FOR FUMES CHIMNEY L.M.     |
| 75  | VM1075A1 | PLASTIC CLIP TO FIX CONTACTORS           |
| 76  | VM1160A0 | LOWER DOOR BRACKET XVC204/304/504/704    |
| 77  | VM1165A0 | UPPER DOOR BRACKET XVC204/304/504/704    |
| 78  | VM1166A0 | CAP FOR DOOR UPPER STIRRUP XVC204/304/5  |
| 79  | VM1170A0 | DOOR UPPER FULCRUM-CAP XVC204/304/504/7  |
| 80  | VM1171A0 | DOOR LOWER FULCRUM-CAP XVC204/304/504/7  |
| 81  | VM1175A0 | DOOR COLUMN BLANKING CAP XVC204/304/504  |
| 82  | VM1190A1 | RIGHT DOOR SPRING LATCH XVC204/304/504/  |
| 83  | VM1191A1 | LEFT DOOR SPRING LATCH XVC204/304/504/7  |
| 84  | VM1192A0 | DOOR SPRING LATCH CAP XVC204/304/504/704 |
| 85  | VM1195A0 | HOLES BLANKING PLATE XVC204/304/504/704  |
| 87  | VM1201A0 | SUPPORT PLATE FOR DOOR MAGNETIC          |
| 88  | VM1207A0 | DOOR DROP PRESERVER FORM XBC404/604/804  |
| 89  | VM1217A0 | DRIP TRAY XBC404/604/804                 |
| 90  | VM1220A0 | CLIP TO FIX DRIP TRAY C.T.               |
| 91  | VM1230A0 | UPPER ALUMINIUM HINGE FOR INTERNAL       |
| 92  | VM1231A0 | LOWER ALUMINIUM HINGE FOR INTERNAL       |
| 93  | VM1235A0 | UPPER HOOK TO STOP INNER GLASS           |
| 94  | VM1236A0 | LOWER HOOK TO STOP INNER GLASS           |
| 95  | VM1260A0 | 90°C CURVED DRAIN PIPE                   |
| 96  | VM1310A0 | COVER FOR TERMINAL BOX XB/XV/XVC/XG      |
| 97  | VM250    | "COMB" TERMINAL BOARD                    |
| 98  | VN1000B0 | MOTOR COND.Suf 200W ALB.M8 CONN.5        |
| 99  | VN1030A2 | BLADE FAN D=196 H=81 38 BLADES M8 NUT    |
| 100 | VT1140A0 | INNER GLASS 743x940x6 BETFL XBC804       |
| 101 | VT1141B0 |  |

**MOD: XBC804**

**EXPLODED VIEW  
DISEGNO ESPLOSO**



Titanservice.su