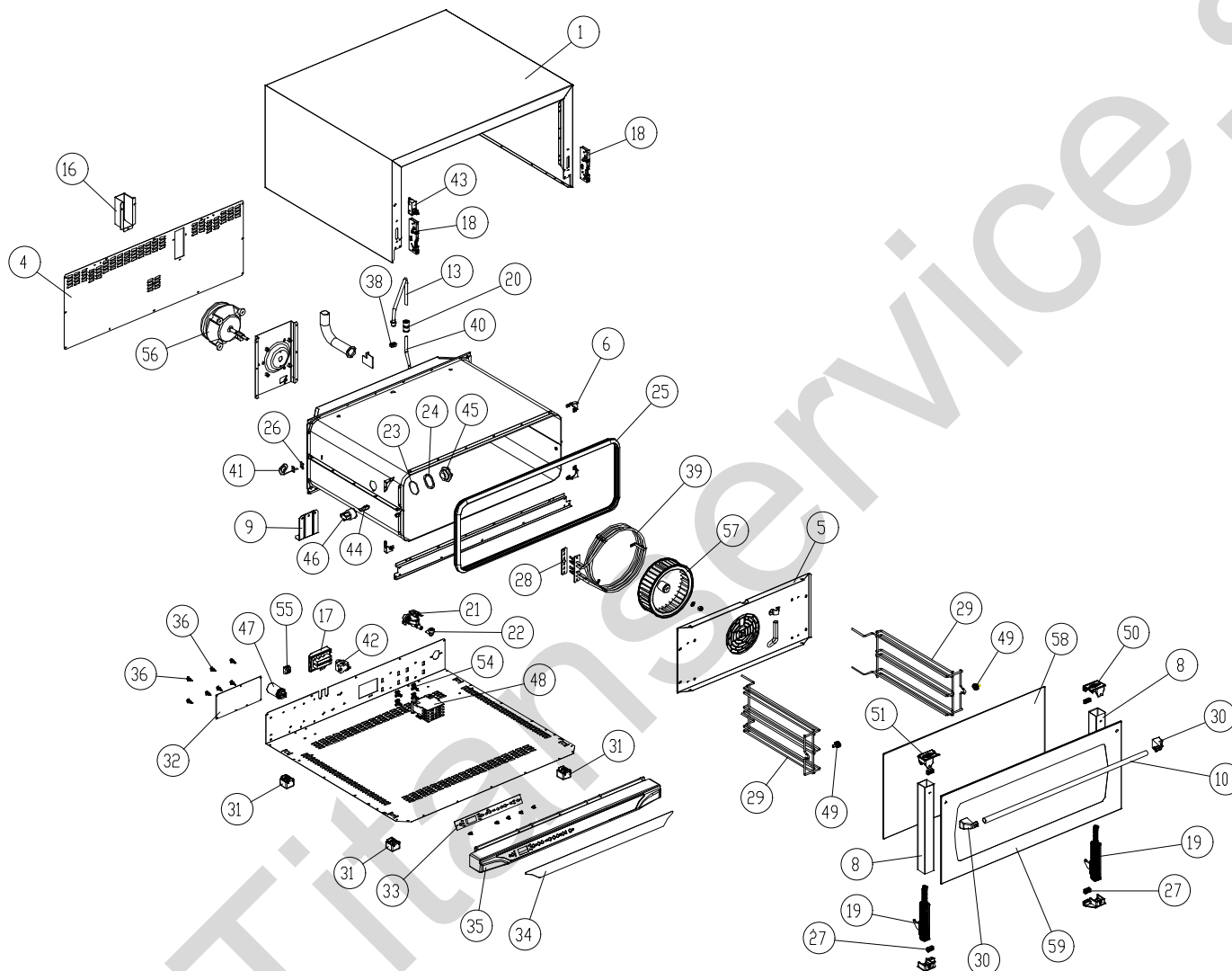


MOD: XF188

EXPLODED VIEW DISEGNO ESPLOSO



LEGEND - LEGENDA

1	OD1280A0	56	VN1000B0
4	OF1090A0	57	VN1025A0
5	OG1120A1	58	VT1065A0
8	OH1420A0	59	VT1066A0
9	OH1455A0		
10	OH1930A0		
13	OH1990A0		
14	OH2015A0		
16	OH2065A0		
17	CE119		
18	CR1000A0		
19	CR1020A0		
20	EL1055A0		
21	EL1085A0		
22	EL1195A0		
24	GN1065A0		
25	GN1110A0		
26	GN1120A0		
27	GN1130A0		
28	GN224		
29	GRL1015A0		
30	MG1015A0		
31	PD1000A0		
32	PE1175B0		
33	PE1195B0		
34	PE1255A0		
35	PE1315A0		
36	PE1320A0		
38	RC1170A0		
39	RS1040A0		
40	TB008		
41	TR1015A0		
42	TR255B		
43	VE086B		
44	VE1005A1		
45	VE1010A0		
46	VE1015A0		
47	VE221		
48	VE1095A0		
49	VI1035A1		
50	VM1045A0		
51	VM1046A0		
55	VM250		

MOD: XF188

EXPLODED VIEW DISEGNO ESPLOSO



DESCRIZIONE CODICI

1	OD1280A0	MANTELLINO INOX L.M. ELENA
4	OF1090A0	SCHIENA ZINCATA L.M. ELENA
5	OG1120A1	CARTER ARIA INOX L.M. ELENA
8	OH1420A0	COLONNINA SX/DX PORTA D=8 PM201008E
9	OH1455A0	STAFFA SOSTEGNO MUFFOLA L.M.
10	OH1930A0	TUBO MANIGLIA INOX L.M. ELENA-ROSSELLA
13	OH1990A0	TUBO ESTERNO UMIDITA + RACCORDO INOX SALDATO L.M.
14	OH2015A0	PROFILO SOSTEGNO MOTORE XV203G/403G L.M.
16	OH2065A0	CUFFIA COPRI CAMINO FUMI ZINCATA L.M.
17	CE119	CAVO 3x1,5 H07RN-F MT1,5+K1/6+SCHUKO
18	CR1000A0	ATTACCO CERNIERA PORTA FORNO RIBALTA L.M.
19	CR1020A0	CERNIERA PORTA FORNO RIBALTA L.M. ELENA
20	EL1055A0	RIDUZIONE J.G. DA D=10 A D=8 PM201008E
21	EL1085A0	ELETTRO. SING. ATT. J. GUEST INCORPORATO CON RID. MARR. TARAT
22	EL1195A0	RACCORDO A GOMITO CON J. GUEST CODOLO D8 - D8
24	GN1065A0	GUARN. FE01 PTFE VERGINE ø53x44x4 PORTALAMP.
25	GN1110A0	GUARNIZIONE PORTA PROFILO 248 LINEMISS-XCH030
26	GN1120A0	GUARNIZIONE Sonda DI TEMPERATURA NTC
27	GN1130A0	GUARNIZIONE SUPPORTO VETRO L.M. L=22mm
28	GN224	GUARN. PTFE+CARB 100x22x0,8sp-c/fori 1999
29	GRL1015A0	GRIGLIA LATERALE DX/SX CROMATA 3TG 600x400 L.M. ELENA
30	MG1015A0	TERMINALE MANIGLIA L.M.
31	PD1000A0	PIEDINO QUADRO 35x35 H26 NYLON CARICATO VETRO GRIGIO
32	PE1175B0	SCHEDA POTENZA LINEA XF VERSIONE INTERMEDIA
33	PE1195B0	SCHEDA CONTROLLO LINE MISS VERSIONE INTERMEDIA
34	PE1255A0	MASCHERINA SERIGRAFATA PAST. EVOLUTA ELENA ROSSELLA
35	PE1315A0	CRUSCOTTO COMANDI IN PLASTICA GRIGIO L.M. ELENA-ROSSELL
36	PE1320A0	DISTANZIALE NYLON INCASTRO MASCHIO-INCASTRO MASCHIO
38	RC1170A0	RACCORDO M14 H=7 CH=20 INOX
39	RS1040A0	RES. CIRCOLARE 3200+1050W 230V D=230 Z.F. INCOLOY
40	TB008	TUBO PE 7,93x4,75 TRASPARENTE
41	TR1015A0	SONDA DI TEMP. NTC UL
42	TR255B	TERMOSTATO SIC. +UNIPOL 330°C Ty95H L=1300mm
43	VE086B	MICROINTERRUTTORE PORTA MF09 16A
44	VE1005A1	LAMPADA ALOGENA 40W
45	VE1010A0	VETRO PORTALAMPADA VAPORE 2002
46	VE1015A0	PORTA LAMPADA PER LAMPADA ALOGENA
47	VE221	CONDENS. ICAR PRL 5uF 450V FASTON
48	VE1095A0	TELERUTTORE GE 25A 230V 50/60 Hz CL01A400T6
49	VI1035A1	NOTTOIINO M6x12,5 CON TAGLIO OTT.CROM.FERMA GRIGUE X
50	VM1045A0	TAPPO SUP. DX COLONNINA PORTA VETRO INTERNO LINEMISS
51	VM1046A0	TAPPO SUP. SX COLONNINA PORTA VETRO INTERNO LINEMISS
55	VM250	MORSETT. A PETTINE

56	VN1000B0	MOTORE COND. 5uF 200W ALB.M8 CONN. 5 POLI
57	VN1025A0	VENTOLE Ø196 H61 38 PALE DADO M8
58	VT1065A0	VETRO INTERNO 715X334X4 BETFL L.M. ELENA
59	VT1066A0	VETRO ESTERNO SER. GIALLO 798X344X5 TFL L.M. ELENA

DESCRIPTION

1	OD1280A0	
4	OF1090A0	
5	OG1120A1	
8	OH1420A0	
9	OH1455A0	
10	OH1930A0	
13	OH1990A0	
14	OH2015A0	
16	OH2065A0	
17	CE119	EL CABLE3x1.5 H07RN-F MT1,5+K1/6+SCHUKO
18	CR1000A0	
19	CR1020A0	
20	EL1055A0	J.G. REDUCTION FROM D=10 TO D=8 PM201008E
21	EL1085A0	WATER SINGLE ELECTROVALVE WITH RAPID CONNECTION & WAT
22	EL1195A0	
24	GN1065A0	SEAL FOR LAMP GLASS COVER (FE01) VIRGIN PTFE ø53x44x4
25	GN1110A0	
26	GN1120A0	
27	GN1130A0	
28	GN224	PTFE+CARB 100x22x0,8sp-c/fori 1999 GASKET
29	GRL1015A0	
30	MG1015A0	
31	PD1000A0	
32	PE1175B0	
33	PE1195B0	
34	PE1255A0	
35	PE1315A0	
36	PE1320A0	
38	RC1170A0	
39	RS1040A0	CIRC. HEAT. ELEMENT 3200+1050W 230V D=230 COLD AREA INC
40	TB008	TRANSPARENT TUBE PE 7,93x4,75
41	TR1015A0	TEMPERATURE PROBE NTC UL
42	TR255B	SAFETY THERMOSTAT+UNIPOL 330°C Ty95H L=1300mm
43	VE086B	DOOR MICROSWITCH MF09 16A
44	VE1005A1	HALOGEN LAMP 40W
45	VE1010A0	LIGHT BULB GLASS COVER (STEAM) 2002
46	VE1015A0	LAMP HOLDER FOR HALOGEN LAMP
47	VE221	ICAR CONDENSER PRL 5uF 450V FASTON
48	VE1095A0	REMOTE CONTROL SWITCH GE 25A 230V 50/60 Hz CL01A400T6
49	VI1035A1	CHROMIUM PLATED BRASS NUT M6x12,5 TO STOP LATERAL SUP
50	VM1045A0	
51	VM1046A0	
55	VM250	"COMB" TERMINAL BOARD BM 5251 I B3-

56	VN1000B0	MOTOR COND. 5uF 200W ALB.M8 CONN.5 TERMINALS
57	VN1025A0	BLADE FAN Ø196x61 39 BLADES AISI316L 8/10
58	VT1065A0	
59	VT1066A0	