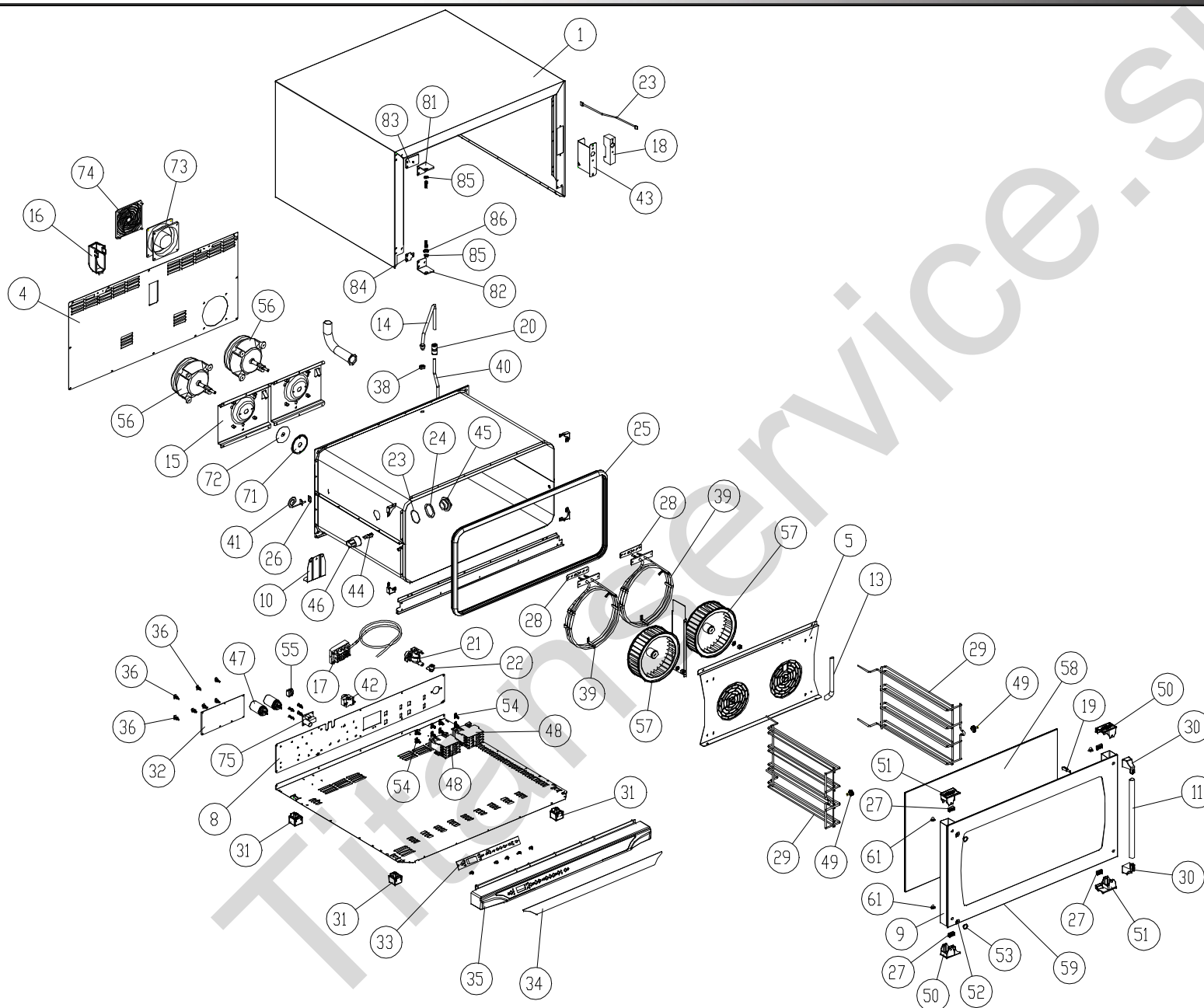


# MOD: XF199

## EXPLODED VIEW DISEGNO ESPLOSO



### LEGEND - LEGENDA

1	OD1835A0	56	VN1000B0
4	OF1285A0	57	VN1025A2
5	OG1125B1	58	VT1070B0
8	OH2716A0	59	VT1074A0
9	OH2626A0	61	VM1025A0
10	OH1455A1	71	OH3020A0
11	OH2631A0	72	GN1140A0
14	OH1990A1	73	VN1060A0
15	OH2015A1	74	VM1270A0
16	VM1065A0	75	PE1425A1
17	CE1130A1	81	OH2640A0
18	CR1035A0	82	OH2641A0
19	CR1040A0	83	OH2666A0
20	EL1055A0	84	OH2665A0
21	EL1085A0	85	TF1000A0
22	EL1195A0	86	VI1700A0
23	CE1295A0		
24	GN1065A1		
25	GN1110A2		
26	GN1120A0		
27	GN1265A0		
28	GN224		
29	GRL1025A0		
30	MG1015B0		
31	PD1001A0		
32	PE1175B0		
33	PE1195C1		
35	PE1315A0		
36	PE1345A1		
38	RC1170A1		
39	RS1090A1		
40	TB008		
41	TR1015A0		
42	TR255B		
43	OH2645A0		
44	VE1005A2		
45	VE1010A2		
46	VE1015A1		
47	VE221		
48	VE1095A0		
49	VI1035A1		
50	VM1045B0		
51	VM1046B0		
52	GN1175A0		
53	TF1005A0		
54	VM1075A1		
55	VM250		

# MOD: XF199

## EXPLODED VIEW DISEGNO ESPLOSO



### DESCRIZIONE CODICI

1	OD1835A0	MANTELLO INOX L.M. ROSSELLA MATIC
4	OF1285A0	SCHIENA ZINCATA L.M. ROSSELLA MATIC
5	OG1125B1	CARTER ARIA INOX L.M. ROSSELLA
8	OH2716A0	PORTA COMPONENTI ZINCATO L.M. 800
9	OH2626A0	COLONNINA DX/SX INOX L.M. ROSSELLA MATIC
10	OH1455A1	STAFFA SOSTEGNO MUFFOLA L.M.
11	OH2631A0	TUBO MANIGLIA D-EST=18 SP=1 L=244 INOX L
14	OH1990A1	TUBO ESTERNO UMIDITA' + RACCORDO
15	OH2015A1	PROFILO SOSTEGNO MOTORE XV203G/403G L.M.
16	VM1065A0	CUFFIA COPRI CAMINO FUMI L.M.
17	CE1130A1	CAVO 5X1,5MMQ H07RN-F L=1,5M + MORS.K1/6
18	CR1035A0	CHIUSURA ELETTRICITA'. 12V L.M.
19	CR1040A0	PERNO CHIUSURA ELETTRICITA'. L.M.
20	EL1055A0	RIDUZIONE J.G. DA D=10 A D=8 PM201008E
21	EL1085A0	ELETT. SING. ATT. J.GUEST INCORPORATO
22	EL1195A0	RACCORDO A GOMITO CON J.GUEST
23	CE1295A0	CAVO PER SERRATURA ELETTRICITA'.
24	GN1065A1	GUARNIZIONE PORTALAMPADA DE=53,2
25	GN1110A2	GUARNIZIONE PORTA PROFILLO 248
26	GN1120A0	GUARNIZIONE Sonda DI TEMPERATURA NTC
27	GN1265A0	GUARNIZIONE VETRO INTERNO XVC054/104
28	GN224	GUARN.PTFE+CARB 100x22x0,8sp-c/fori 1999
29	GRL1025A0	GRIGLIA LATERALE DX/SX CROMATA
30	MG1015B0	TERMINALE MANIGLIA L.M.
31	PD1001A0	PIEDINO 35X35 H26 PLASTICA+GOMMA GRIGIO
32	PE1175B0	SCHEDA POTENZA L.M. DYNAMIC 230V
33	PE1195C1	SCHEDA CONTROLLO L.M. DYNAMIC
35	PE1315A0	CRUSCOTTO COMANDI IN PLASTICA L.M. 800
36	PE1345A1	DISTANZIALE NYLON INCASTRO MASCHIO-INCAS
38	RC1170A1	DADO M14 H=8 CH=22 INOX
39	RS1090A1	RESISTENZA CIRCOLARE D=230 3 SPIRE
40	TB008	TUBO PE 7,93x4,75 TRASPARENTE
41	TR1015A0	SONDA DI TEMP. NTC UL
42	TR255B	TERMOSTATO SIC.+UNIPOL.330°C Ty95H
43	OH2645A0	PIASTRINA PORTA CHIUSURA ELETTRICITA'.
44	VE1005A2	LAMPADA HALOPIN ES H66733ES 33W
45	VE1010A2	VETRO COPRILAMPADA BOROSILICATO
46	VE1015A1	PORTA LAMPADA SERIE 2 PER LAMPADA
47	VE221	CONDENSICAR PRL 5uF 450V FASTON
48	VE1095A0	TELERUTTORE GE 25A 230V 50/60
49	V11035A1	NOTTOLINO M6x12,5 CON TAGLIO OTT.CROM.FE
50	VM1045B0	TAPPO SUP. DX COLONNINA PORTA
51	VM1046B0	TAPPO SUP. SX COLONNINA PORTA
52	GN1175A0	GUARNIZIONE BOCCOLA FISSAGGIO
53	TF1005A0	BOCCOLA FISSAGGIO VETRO L.M. STEFANIA
54	VM1075A1	CLIP DI FISSAGGIO PER TELERUTTORI
55	VM250	MORSETT.A PETTINE

56	VN1000B0	MOTORE COND.5uF 200W ALB.M8 CONN.5 POLI
57	VN1025A2	VENTOLA D=196 H=61 38 PALE INOX DADO M8
58	VT1070B0	VETRO INTERNO 715X415X6 BTFL
59	VT1074A0	VETRO EST. NERO 798X424X5 4 F. TFL XF199
61	VM1025A0	TAPPO NYLON PA66 V2 GRIGIO Ø16
71	OH3020A0	DISCO TENUTA ALBERO MOTORE INOX
72	GN1140A0	GUARNIZIONE PORTAMOTORE STAMP.
73	VN1060A0	VENTOLA RAFFREDDAMENTO ASSIALE 230V
74	VM1270A0	GRIGLIA COPRI VENTOLA D=119 NYLON NERO
75	PE1425A1	SCHEDA COMANDO SERRATURA ELETTRICA
81	OH2640A0	CERNIERA SUP. PORTA FORNO L.M.
82	OH2641A0	CERNIERA INF. PORTA FORNO L.M.
83	OH2666A0	CONTROSTAFFA SUP. PORTA FORNO ZINCATA
84	OH2665A0	CONTROSTAFFA PORTA FORNO ZINCATA
85	TF1000A0	BOCCOLA FULCRO PORTA L.M. STEFANIA MATIC
86	V11700A0	RONDELLA PIANA 18X6,4X1,5 INOX

### DESCRIPTION

1	OD1835A0	
4	OF1285A0	
5	OG1125B1	STAINLESS STEEL FAN GUARD L.M. ROSSELLA
8	OH2716A0	
9	OH2626A0	
10	OH1455A1	
11	OH2631A0	
14	OH1990A1	EXTERNAL WATER PIPE + STAINLESS
15	OH2015A1	MOTOR SUPPORT PROFILE XV203G/403G/L.M.
16	VM1065A0	PLASTIC COVER FOR FUMES CHIMNEY L.M.
17	CE1130A1	CABLE 5x1,5MMQ H07RN-F L=1,5M
18	CR1035A0	LOCKING SYSTEM 12V L.M. STEFANIA MATIC
19	CR1040A0	DOOR LATCH FOR LOCKING SYSTEM
20	EL1055A0	STRAIGHT REDUCTION FROM D=10 TO
21	EL1085A0	WATER SINGLE ELECTROVALVE WITH
22	EL1195A0	ELBOW UNION WITH J.GUEST TERMINAL
23	CE1295A0	CABLE FOR LOCKING SYSTEM 1.3M
24	GN1065A1	SEAL FOR LAMP GLASS COVER IPURE
25	GN1110A2	DOOR GASKET PROFILE 248 LINE M65-XCH030
26	GN1120A0	TEMPERATURE PROBE NTC SEAL
27	GN1265A0	INTERNAL GLASS SEAL XVC054/104
28	GN224	PTFE+CARB 100x22x0,8sp-w/holes
29	GRL1025A0	RIGHT/LEFT LAT.GRID CHROMIUM-PLATED
30	MG1015B0	HANDLE END L.M.
31	PD1001A0	FOOT 35X35 H26 GREY PLASTIC+RUBBER
32	PE1175B0	POWER CARD L.M. DYNAMIC 230V
33	PE1195C1	CONTROL CARD L.M. DYNAMIC SERIE
35	PE1315A0	PLASTIC CONTROL PANEL L.M. 800
36	PE1345A1	NYLON SPACER MALE-MALE H=14
38	RC1170A1	STAINLESS STEEL NUT M14 H=8 CH=22
39	RS1090A1	CIRC. HEAT. ELEMENT D=230 3 TURNS
40	TB008	TRANSPARENT TUBE PE 7,93x4,75
41	TR1015A0	TEMPERATURE PROBE NTC UL
42	TR255B	SAFETY THERMOSTAT+UNIPOL. 330°C
43	OH2645A0	PLAQUE FOR LOCKING SYSTEM L.M.
44	VE1005A2	HALOGEN LAMP 33W ENERGY SAVER
45	VE1010A2	
46	VE1015A1	LAMP HOLDER SERIE 2 FOR HALOGEN LAMP
47	VE221	ICAR CONDENSER PRL 5uF 450V FASTON
48	VE1095A0	REMOTE CONTROL SWITCH GE 25A 230V
49	V11035A1	CHROMIUM PLATED BRASS NUT M6x12,5
50	VM1045B0	RIGHT UPPER LID FOR COLUMN FOR
51	VM1046B0	LEFT UPPER LID FOR COLUMN FOR
52	GN1175A0	GASKET FOR BUSHING TO FIX GLASS
53	TF1005A0	BUSHING TO FIX GLASS L.M. STEFANIA MATIC
54	VM1075A1	PLASTIC CLIP TO FIX CONTACTORS
55	VM250	"COMB" TERMINAL BOARD

56	VN1000B0	MOTOR COND.5uF 200W ALB.M8 CONN.5
57	VN1025A2	FAN D=196 H=61 38 BLADES STAINLESS
58	VT1070B0	INTERNAL GLASS 715x415x6 BTFL
59	VT1074A0	
61	VM1025A0	NYLON LID PA66 V2 GREY Ø16
71	OH3020A0	STAINLESS STEEL SEALING DISC FOR MOTOR
72	GN1140A0	MOTOR GASKET
73	VN1060A0	230V AXIAL COOLING FAN
74	VM1270A0	BLACK NYLON GRID TO COVER FAN D=119
75	PE1425A1	ELECTRIC LOCK CONTROL CARD L.M.
81	OH2640A0	UPPER DOOR HINGE L.M. STEFANIA MATIC
82	OH2641A0	LOWER DOOR HINGE L.M. STEFANIA MATIC
83	OH2666A0	
84	OH2665A0	ZINCED OVEN DOOR COUNTERSTIRRUP
85	TF1000A0	DOOR FULCRUM BUSHING L.M. STEFANIA MATIC
86	V11700A0	STAINLESS STEEL FLAT WASHER 18X6,4X1,5

# MOD: XF199

EXPLODED VIEW  
DISEGNO ESPLOSO



Titanservice.su