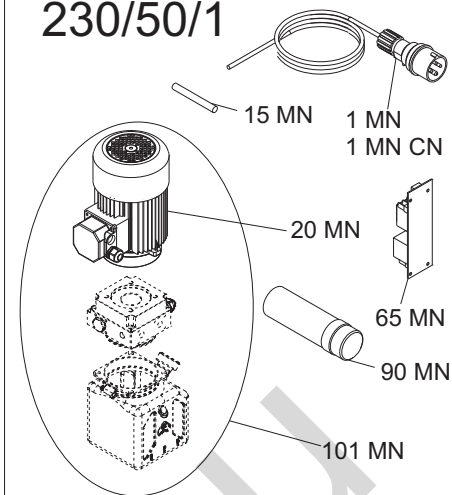
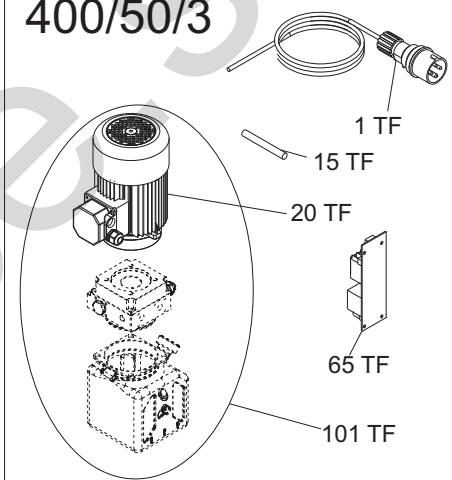


FROM23-08-2011

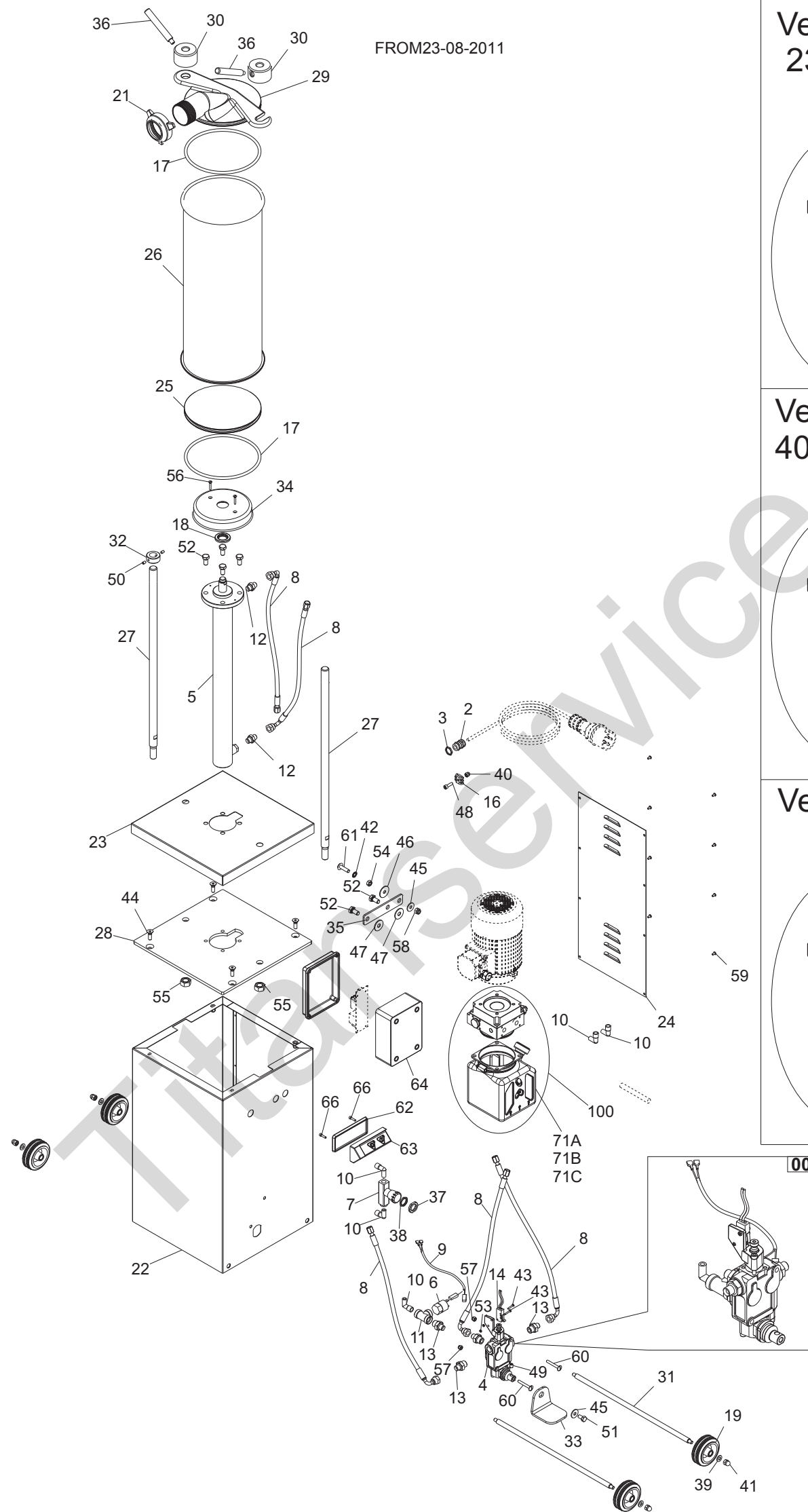
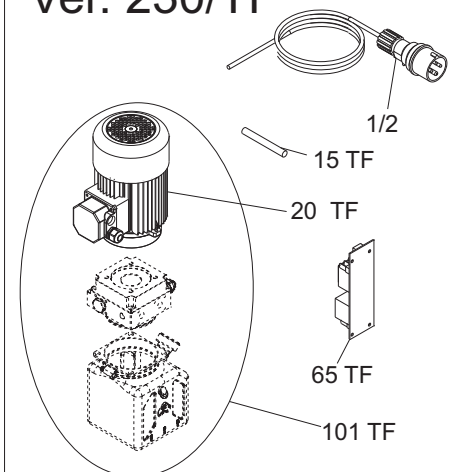
## Ver. 1-PHASE 230/50/1



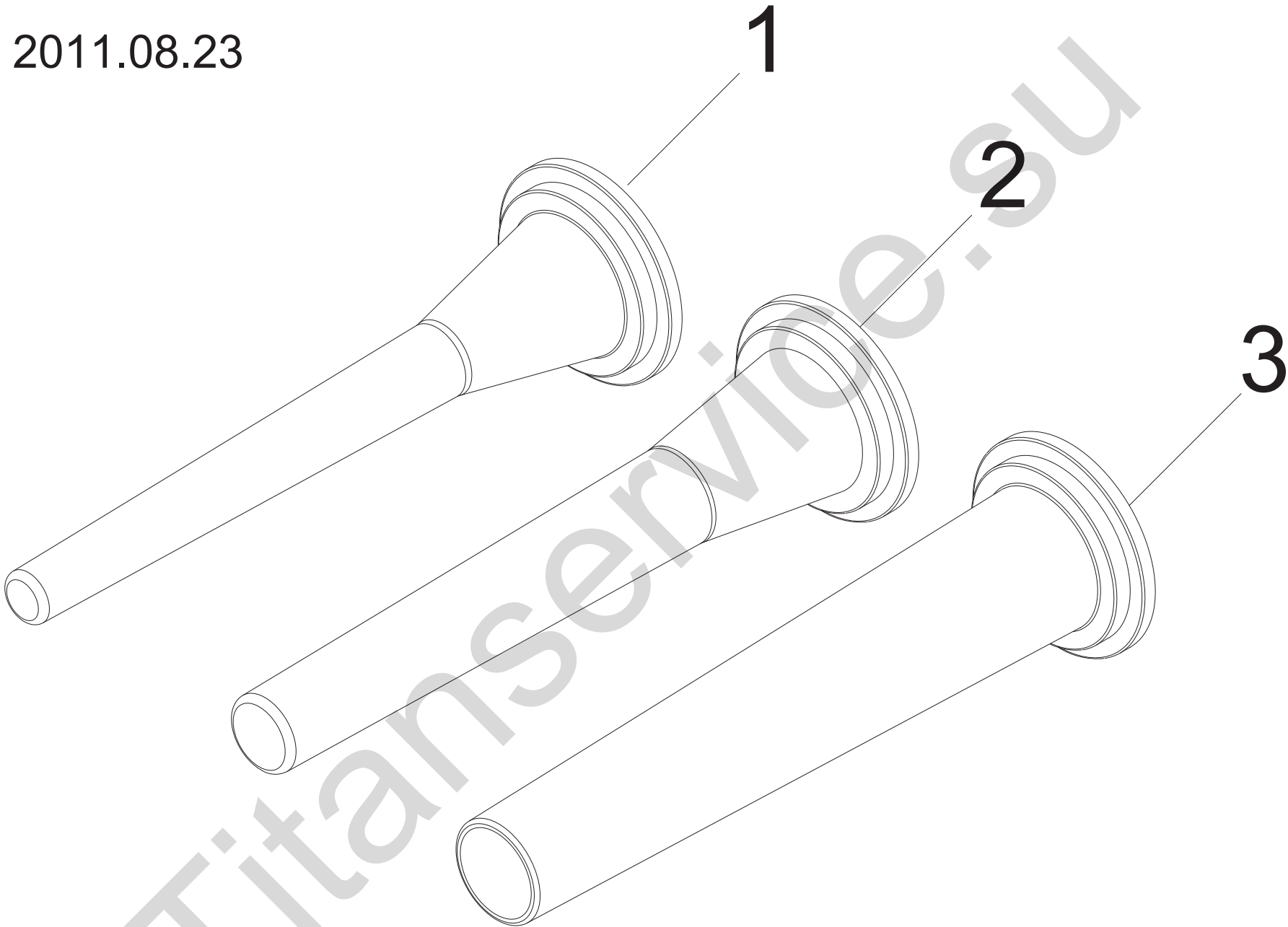
## Ver. 3-PHASE 400/50/3



## Ver. 230/TF



from 2011.08.23



**IS 15 IDRA CE - from 2011.08.23****Riferimento Nome prodotto****Codice**

0	DISTRIB. MAN IS DRI ASSEMBLATO	LF1013044
01 MN	CAVO + SPINA CEE 2P + T	LF1010050
01 TF	CAVO + SPINA CEE 3P + T.	LF1010047
01 MN CN	CAVO 3X1 CON SPINA CHINA 10A L=3000	LF1000416025
2	PRESSACAVO OTT.NICH.PG 11	LF1010063
3	DADO OTT.NICH.PG 11	LF1010063A
4	DISTR.MAN. LEVA C/ MICRO-SWITCH	LF1013004
5	CILIND.OLIOD.STELO IX IS 15 STEL+15	LF1012512
6	PRESSOSTATO K4/ZCF1/P1 FOX 20/200	LF1013002
7	RUBINETTO DRI 25	LF1013003
8	TUBO FLESS.RACCORD.800MM DRI 25	LF1013005
9	CAVETTO MICRO-PRESSOSTATO IS NEW	LF1013007
10	CORPO RACCORDO STANDARD DRI 25	LF1013013
11	ADATTATORE F+F+F 04-1/" STAMP. (606	LF1013014
12	NIPPLES GUARNIZ. 04 1/4" IS 24 NEW	LF1013015
13	NIPPLES RIDUZ. 06 3/8"x1/4" IS24NEW	LF1013016
14	MICRO INT. PEDALIERA IS IDRA	LF1013018
15 TF	CAVETTO ALIMENT. MOTORE TF TC BZ	LF1030522030
15 MN	CAVETTO MN/1,5 ALIMENTAZIONE MOTORE	LF1010053
16	MORSETTO A PETTINE X EQUIPOTENZ. BZ	LF1030522050
17	OR 8725	LF1211002
18	ANEL.TEN. 20-40-6 TIPO A X IS VARIA	LF1212505
19	RUOTA D.80X25 SC 80 DRI 25	LF1513001
20 TF	MOTORE HP 0.75 400-50/60HZ DRI 25	LF1813001
20 MN	MOTORE HP 0.75 B14 2 POLI 230/50HZ	LF1813002
21	GHIERA CILINDRO IS	LF2011014
22	CARENATURA INOX IS 15 DRI	LF2012501
23	COPERC.CARENA INOX IS 15 DRI	LF2012503
24	CARTER CHIUSU.INOX IS 15 DRI	LF2012504
25	TAMPONE INOX IS 15 DRI	LF2012506
26	CILINDRO H=510 IS 15 VARIA	LF2012512
27	ASTA SUPP.COP.INOX IS 15 DRI	LF2012515
28	PIASTRA SUP. CILIN. ZIN IS 15 VARIA	LF2012517
29	COPERCHIO CHIUS.IX IS 15 V.IND	LF2012518
30	ANELLA BLOCCAGGIO IS 15 DRI	LF2012522
31	ASTA SUPPOR. RUOTE IS 15 DRI	LF2012525
32	ANEL.SUP.COP.X AST. IS 15 DRI	LF2012527
33	PEDALIERA BURAT. IS VARIA	LF2013010.10
34	PROTEZ. CIL.IN PVC NERO DRI 25	LF2013013
35	SUPPORTO CENTRALINA DRI 25	LF2013014
36	LEVA ANELLA BLOCCAGGIO DRI 25	LF2013024
37	GHIERA IX RUBINETT. IS 25 DRI	LF2013040
38	DADO OTTONE RUBIN. IS 25 DRI	LF2013042
39	RONDELLA PIANA DIN 125 D 8	IX2125008
40	DADO CIECO DIN 1587 M 6	IX21587LC006
41	DADO CIECO DIN 1587 M 8	IX21587LC008
42	RONDELLA DENTEL. DIN 6798-A D 8E	IX26798A008

44	VITE TSPEI DIN 7991 M 8X25	IX27991008025
45	RONDELLA F.LARGA DIN 9021 D 8X24	IX29021008024
46	RONDELLA F.LARGA DIN 9021 D 8X32	IX29021008032
47	RONDELLA F.LARGA DIN 9021 D 10X30	IX29021010030
48	VITE TCEI DIN 912 M 6X20	IX2912006020
49	VITE SENZA TESTA DIN 913 M 8X10 CE	IX2913008010
50	VITE SENZA TESTA DIN 916 M 6X8 CE	IX2916006008
51	VITE TE DIN 933 M 8X16 T.F.	IX2933008016
52	VITE TE DIN 933 M 10X20 T.F.	IX2933010020
53	DADO ES. DIN 934 M 3	IX2934003
54	DADO ES. DIN 934 M 8	IX2934008
55	DADO ES. DIN 934 M 16	IX2934016
56	VITE TSP- DIN 963 M 4X25	IX2963004025
57	DADO AUTOBLOCC. ES DIN 982 M8 ALTO	IX2982008
58	DADO AUTOBLOCC. ES DIN 982 M8 ALTO	IX2982008
59	VITE POELIERS M 4X8	IX2POEL004008
60	VITE POELIERS M 8X60	IX2POEL008060
61	VITE POELIERS M 8X30	IX2POEL008030
62	GUARNIZIONE PULS. PICCOLA	LF1061104
63	CORPO PULS COMPLETA PER FT	LF1061102
64	SCAT.GRIGIA ELETTR. ABB. 0852	LF1041006
65 MN	CIRC. DI POT.230 V CON MICRO LAV.	LF1013020
65 TF	CIRC. DI POT.380 V CON MICRO LAV.	LF1013022
66	VITE TCEI DIN 912 M 4X16	IX2912004016
71B	SERB. PLAST 1,5 LT IS 15/24/35 HYDR	LF1013012
71A	SERBATOIO IN PLASTICA IS IDRA	LF1013011
90 MN	CONDENSATORE DA 20 UF	LF1011020
100	CENTR.MR4-V1B-PA-ML-TQ1-FY DRI 25	LF1013001
101 MN	ASS. CENTR + MOTORE MN X IS 15-24	LF1013053
101 TF	ASS. CENTR + MOTORE TF X IS 15-24	LF1013050
1	IMBUTO PICCOLO IS	LF2011015A
2	IMBUTO MEDIO IS	LF2011015B
3	IMBUTO GRANDE IS	LF2011015C