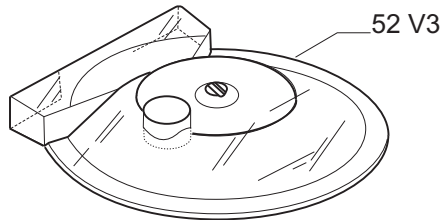
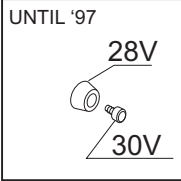
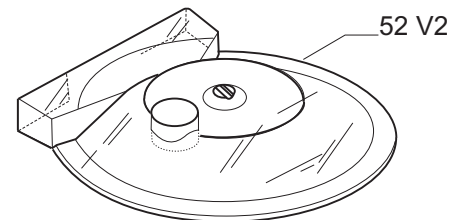


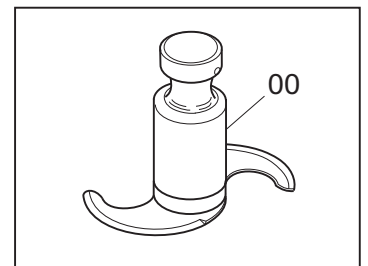
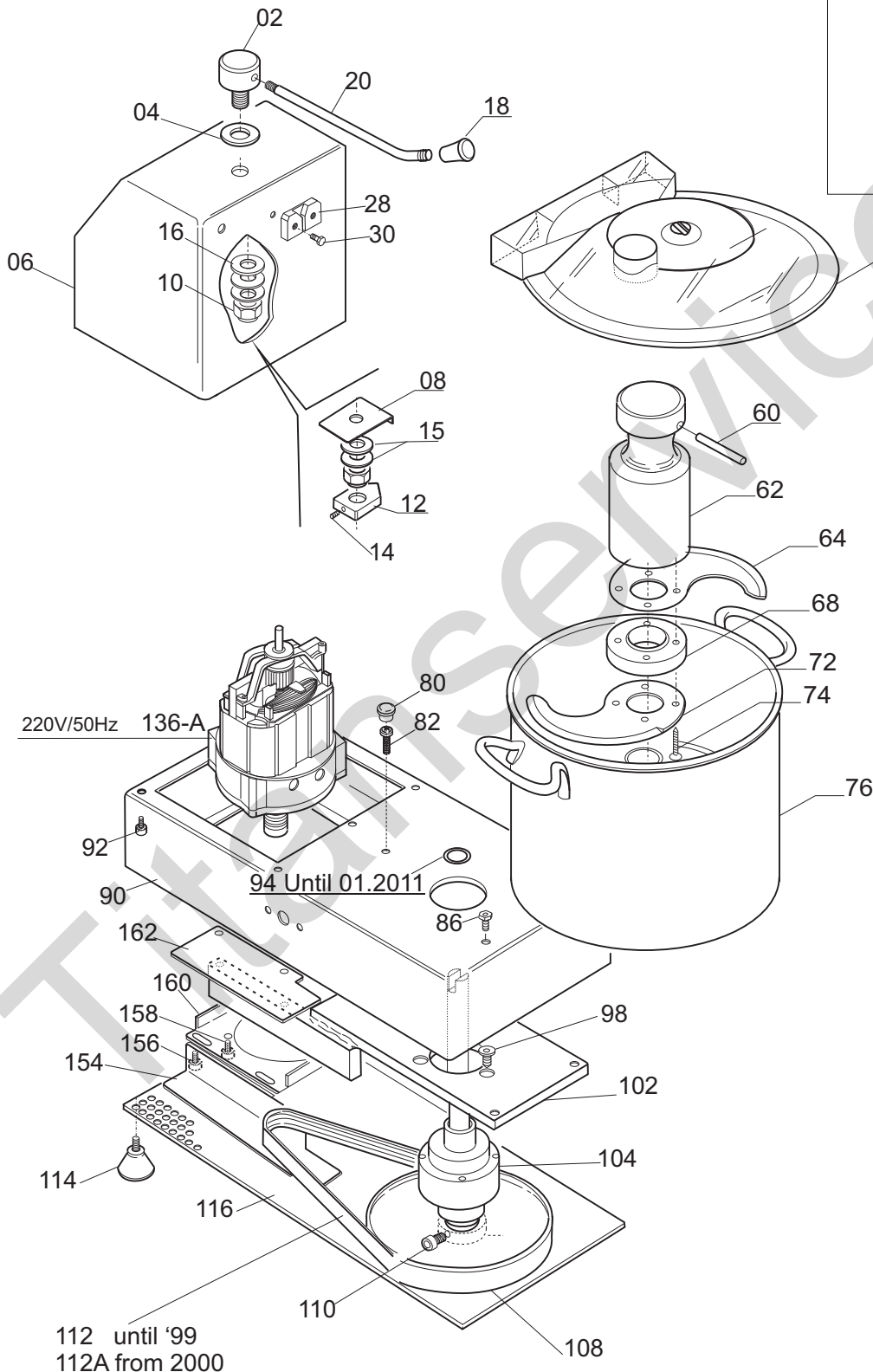
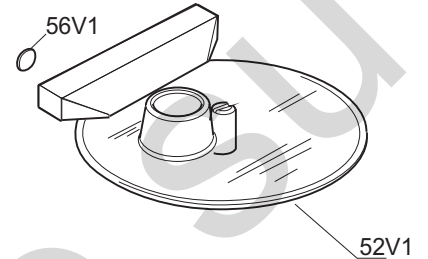
Fino al 08/2003 no guarnizione
Until 08/2003 no gasket



Fino al 1999 con Magnete
Until 1999 with Magnet

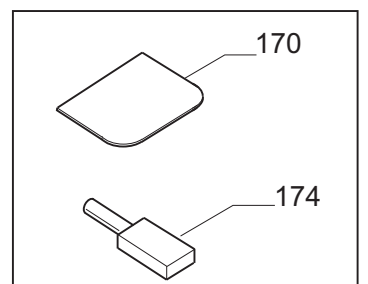


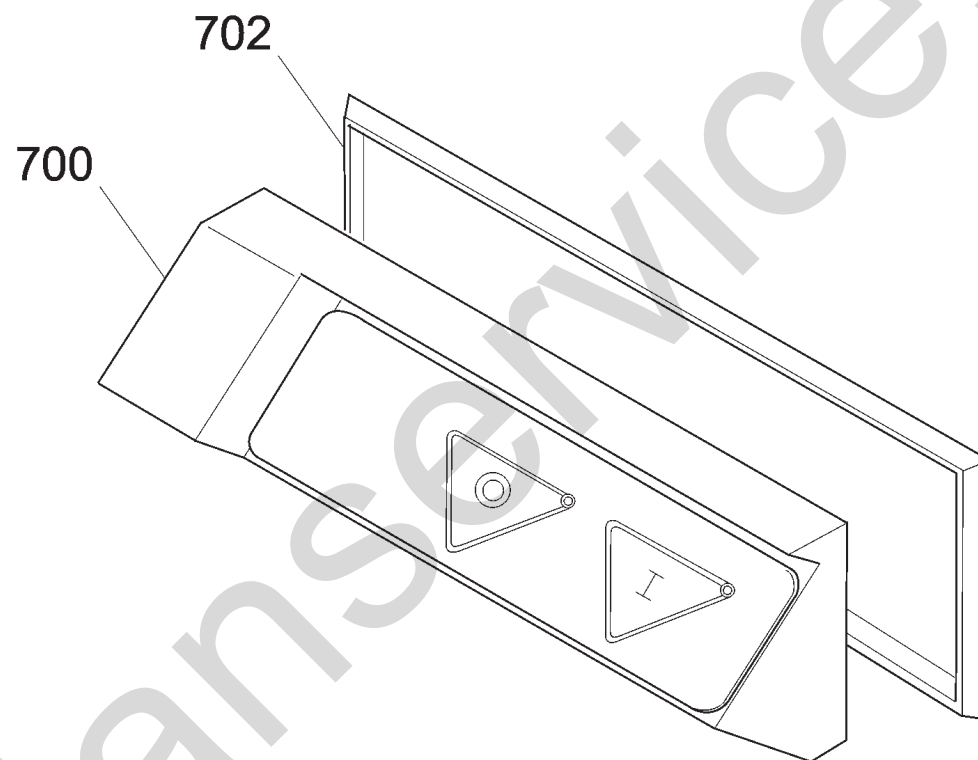
Fino al 1992
Until 1992



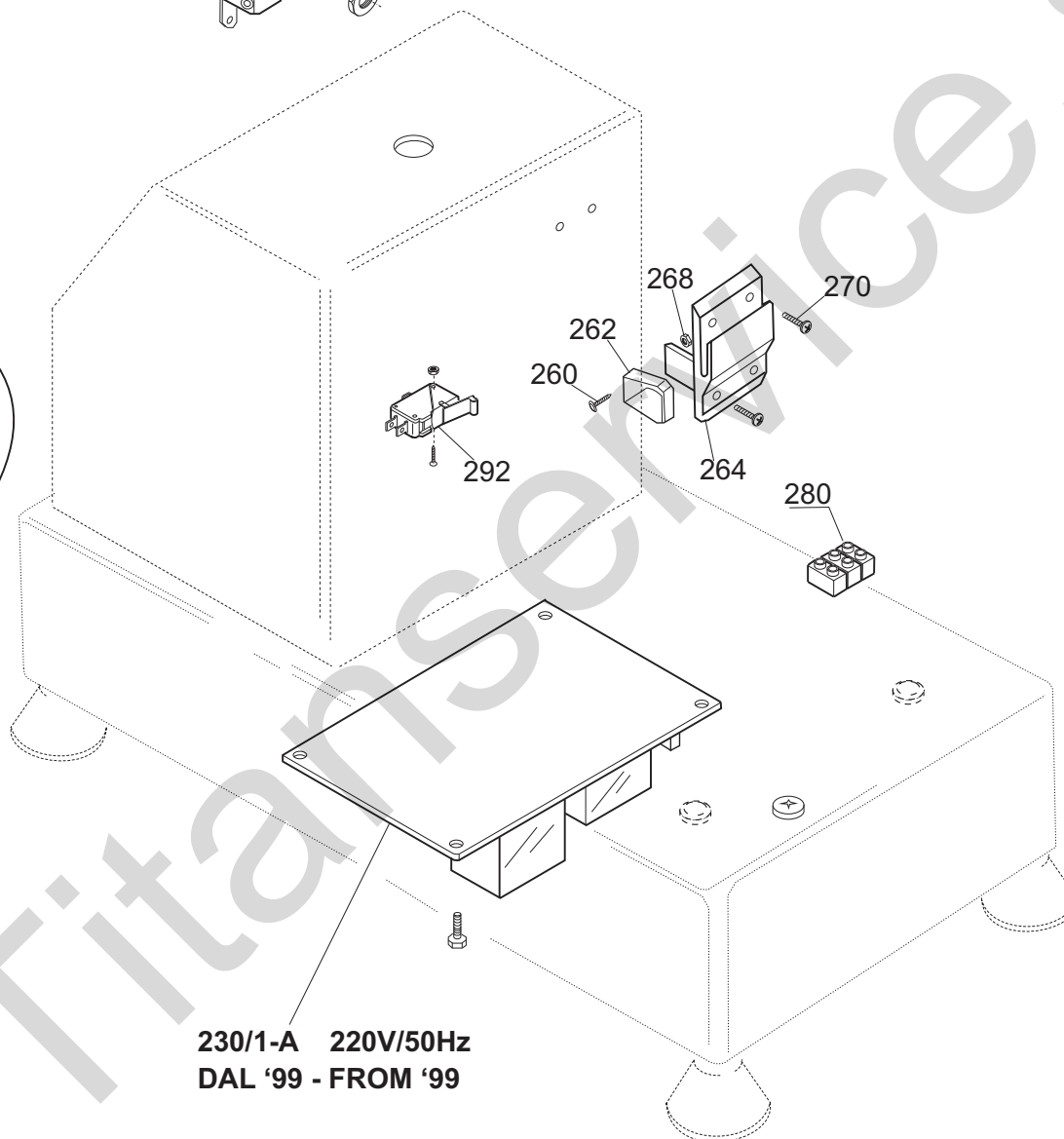
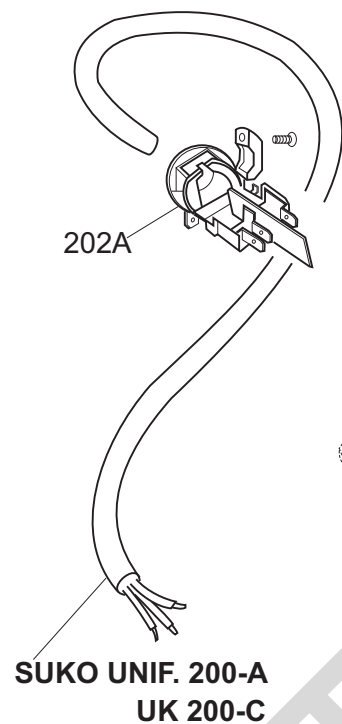
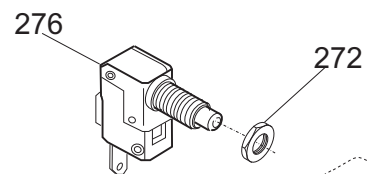
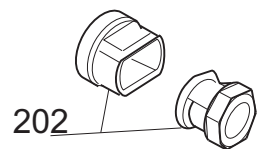
PROTEZIONE LAMA
BLADE GUARD

173 / 175

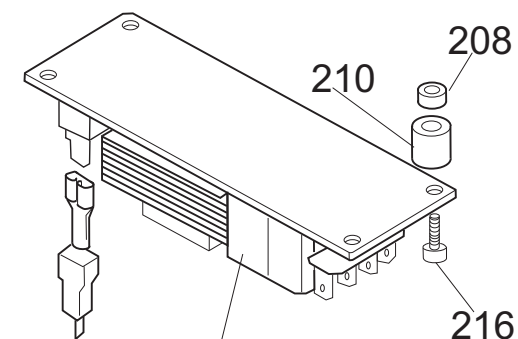
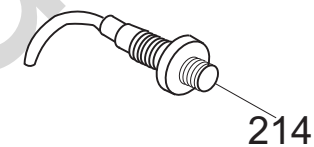




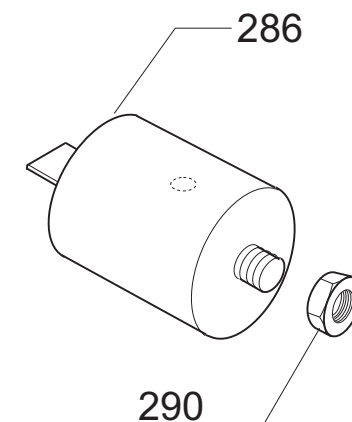
FINO AL '99 - UNTIL '99



FINO AL '99 - UNTIL '99



230-A 220V/50Hz



C4 CE TAV. 1/2**Riferim Nome prodotto****Codice**

0	MOZZO COMPL.COLT.NORMALI C4	MSC04AMON
1	ASS. PERNO+ASTINA+POMELLO C4-C6	MSC04N002C
2	PERNO PORTA ASTINA C4-C6	MSC04N002
4	RONDELLA FRIZIONE C4-C6	MSC04N004
6	TESTA CARCASSA C4	MSC04N006
8	SQUADRA FRIZIO. NUOVA C4-C6-C9	MSC04N008A
10	DADO FRIZIONE C4-C6-C9	MSC04N010
12	CAMMA MICRO C/ROT. C4-C6-C9	MSC04N012A
18	POMOLO ASTINA C4-C6	MSC04N018
20	ASTINA C4-C6	MSC04N020
28	GUIDA PER VASCA C4-C6	MSC04N028
28V	GUIDA PER VASCA F.AL 97 C4-C6	MSC04N028V
52	COP.COMPL.+GUARNIZ.C4-6 DAL 08/2003	MSC04V052A
52V3	COPERCHIO FINO AL 08/2003 C4-C6	MSC04N052
52V1	COPERCHIO FINO AL 92 C4-C6	MSC04N052V1
52V2	COPERCHIO FINO AL 99 C4-C6	MSC04N052V2
54	TAPPO COPERCHIO C4-C6	MSC04N054
56V1	PLASTOMAGNETE F.AL 92 C4-C6	MSC04N056V1
60	SPINA PORTALAMA C4	MSC04N060
62	PORTA LAMA C4-C4VV	MSC04N062
62P	PORTA LAMA PER PESTO C4-C4VV	MSC04N062P
64V	COLTELLO SUP. ALTO PESTO C4-C6	MSC04N064V
64F	COLTELLO SUP. FORATO C4-C6	MSC04N064F
64P	COLTELLO SUP. IMPASTI C4-C6	MSC04N064P
64Z	COLTELLO SUP. ZIGRINATO C4-C6	MSC04N064Z
64	COLTELLO SUPERIORE C4-C6	MSC04N064
68P	DISTANZ.COLTELLI PESTO C4-C4VV	MSC04N068P
68	DISTANZIALE COLTELLI C4-C4VV	MSC04N068
72F	COLTELLO INF. FORATO C4-C6	MSC04N072F
72Z	COLTELLO INF. ZIGRINATO C4-C6	MSC04N072Z
72	COLTELLO INFERIORE C4-C6	MSC04N072
76	VASCA DI LAVORAZIONE C4-C4VV	MSC04N076
80A	GOMMINO DAL 99 C4-C6-C9	MSC04N080A
90	CORPO CARCASSA C4-C6	MSC04N090
94	GUARNIZIONE OR C4-C6	MSC04N094
102A	PLACCA ALLUMINIO DAL 99 C4-C6	MSC04N102A
104	MOZZO ALLUMINIO COMPLETO C4	MSC04N104
108	PULEGGIA MOZZO C4-C6	MSC04N108
112	CINGHIA PIATTA 630X6 F.AL99 C4-C6	MSC04N112
112A	CINGHIA PIATTA 660X6 DAL 99 C4-C6	MSC04N112A
114	PIEDINO C4-C6-C9	MSC04N114
116	GRIGLIA DI PROTEZ. INF. C4-C6	MSC04N116
136A	MOTORE 230V 50HZ C4-C6-C9	MSC04N136
154	PIASTRINA INF. C4-C6	MSC04N154
160	SUPPORTO MOTORE C4-C6	MSC04N160
162	PIASTRINA SUPERIORE C4-C6	MSC04N162
170	RASCHIETTO CUTTER COL.ROSSO	MSC04N200

173	PROT.COLTELLI LAME SUP. C4-C6	MSC04N073
174	PIETRA AFFILATURA CUTTER	MSC04N174
175	PROT.COLTELLI LAME INF. C4-C6	MSC04N075
700	CORPO PUL.PICCOLA MONT.NO GUARNIZIO	19702000
702	GUARNIZIONE PULSANT.PICCOLA SRM	19563030
200C	CAVO ALIM.COMP. MN INGL.	19410504
200A	CAVO ALIM.COMP. MN SUKO UNIFI	19410502
202A	PASS.+STR.CAVO DAL 99 C4-C6-C9	MSC04N202A
202	PASSACAVO+STRINGICAVO C4-C6-C9	MSC04N202
230A	CIRCUITO DI POTENZA TUV 220 MN	19411007
230/1-	CIRCUITO POT.DAL99 C4-C6 220 MN	19413007
262	MICRO MECCANICO C4-C6	MSC04N262
264	SUPPORTO MICRO C4-C6	MSC04N264
276	MICRO MECCANICO C4-C6-C9	MSC04N276
280	MORSETTIERA C4-C6-C9	MSC04N280
286	FILTRO ANTI-DISTURBO C4-C6	MSC04N286
292	MICRO MECC. LEVA C/ROT. CUTTER	MSC04N292
800C	CORPO PUL.BIANCA NEUTRA MONTATA	19702022
800B	CORPO PUL.BLU NEUT.MONT.NO GUAR	19702021
800A	CORPO PUL.NEUTRA MONT.NO GUARNIZIO	19702004
802	GUARNIZIONE PULSANT.NEUTRA TONDA	19563034