

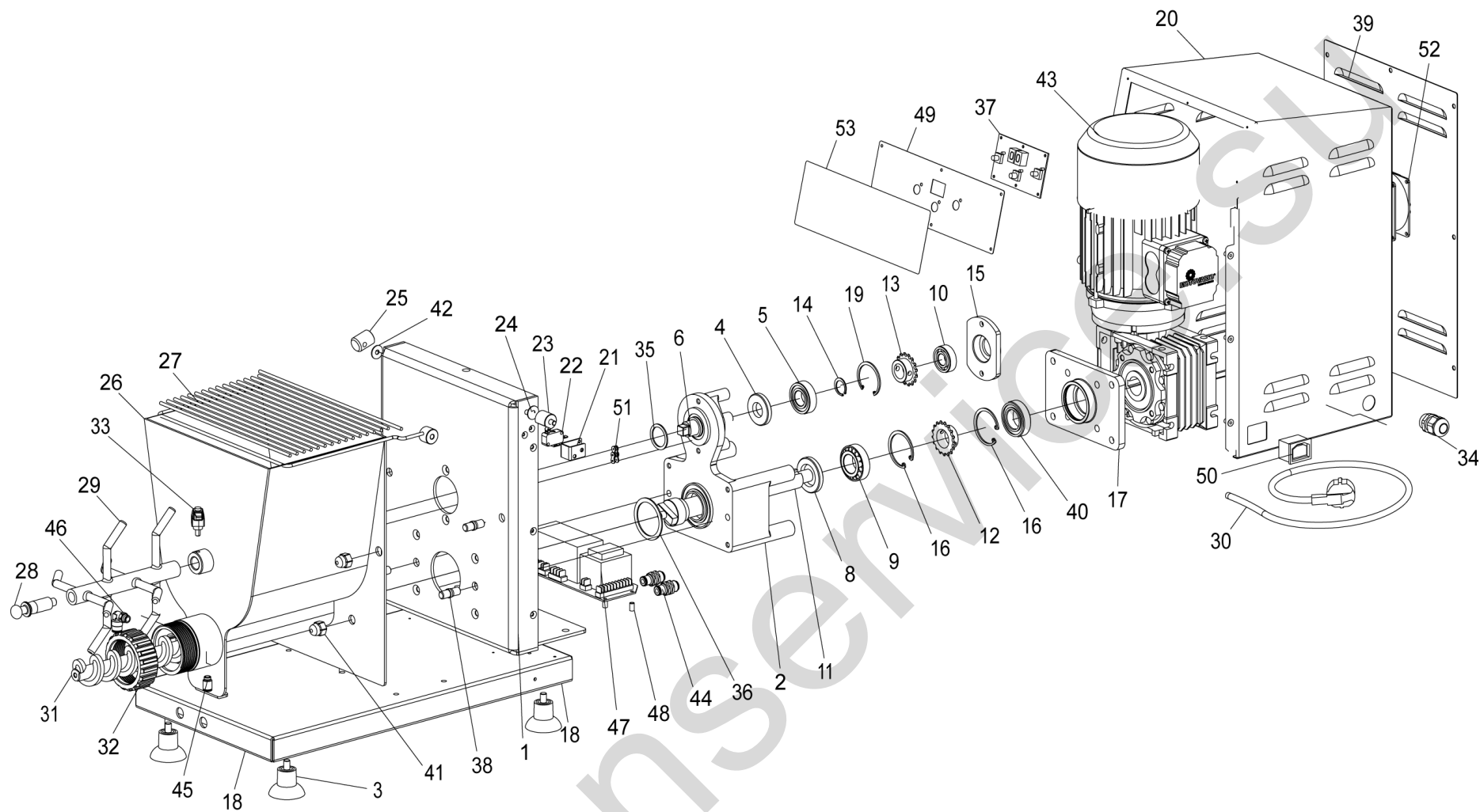


## SPARE PARTS TAVOLA RICAMBI

PF40E

SPEC.	N.	CODE	DENOMINAZIONE - DENOMINATION	PRICE
	1	SL4297	FRAME - TELAIO	
	2	SLL4299	SUPPORT - SUPPORTO	
	3	SL1610	Foot - Piedino	
20x42x7	4	SL2707	Oil seal - Paraolio	
6004-2RS	5	SL1799	Bearing - Cuscinetto	
	6	SL4301	SHAFT - ALBERO	
30x47x7	8	SL6461	Oil seal - Paraolio	
25X47X15	9	SL6462	BEARING - CUSCINETTO	
6202 2RS	10	SL2472	Bearing - Cuscinetto	
	11	SL4302	SHAFT - ALBERO	
	12	SL4397	PINION - PIGNONE	
	13	SL3241	PINION - PIGNONE	
	14	SL3486	Seeger - Seeger	
	15	SL4321	SUPPORT - SUPPORTO	
	16	SL0082	Seeger - Seeger	
	17	SL4320	SUPPORT - SUPPORTO	
	18	SL4324	DISTRIBUTOR - BASE	
	19	SL2056	Seeger - Seeger	
	20	SL4298	Housing - Carcassa	
	21	SL4325	BRACKET - STAFFA	
	* 22	SL0885	Microswitch - Microinterruttore	
	23	SL2227	Cam - Camma	
	24	SL4328	SHAFT - ALBERO	
	25	SL4349	STOP - BATTUTA	
	26	SL4300	BOWL - VASCA	
	27	SL4348	COVER - COPERCHIO	
	28	SL4322	BALL KNOB - POMELLO	
	29	SL4310	HOOK - GANCIO	
schuko	30	SL4287	Electric cable - Cavo elettrico	
	31	SL4311	Screw shaft - Elica	
Assembly	32	SL4312	RING NUT - GHIERA	
	33	SL6463	LEVER - LEVA	
M20X1,5	34	SL4408	CONNECTOR - PRESSACAVO	
	35	SL6464	GASKET - GUARNIZIONE	
	36	SL6465	GASKET - GUARNIZIONE	
comando	* 37	SL1557	ELECTRONIC CARD - SCHEDA ELETTRONICA	
	38	SL4336	STUD BOLT - PRIGIONIERO	
	39	SL4326	COVER - COPERCHIO	
6204 2rs	40	SL0202	Bearing - Cuscinetto	
	41	SL6474	NUT - DADO	

\*Ricambio consigliato - Advised spare parts



POS. CODE	
1	SL4297
2	SLL4299
3	SL1610
4	SL2707
5	SL1799
6	SL4301
8	SL6461
9	SL6462
10	SL2472
11	SL4302
12	SL4397
13	SL3241
14	SL3486
15	SL4321
16	SL0082
17	SL4320
18	SL4324
19	SL2056
20	SL4298
21	SL4325
22	SL0885
23	SL2227
24	SL4328
25	SL4349
26	SL4300
27	SL4348
28	SL4322
29	SL4310
30	SL4287
31	SL4311
32	SL4312
33	SL6463
34	SL4408
35	SL6464
36	SL6465
37	SL1557
38	SL4336
39	SL4326
40	SL0202
41	SL6474

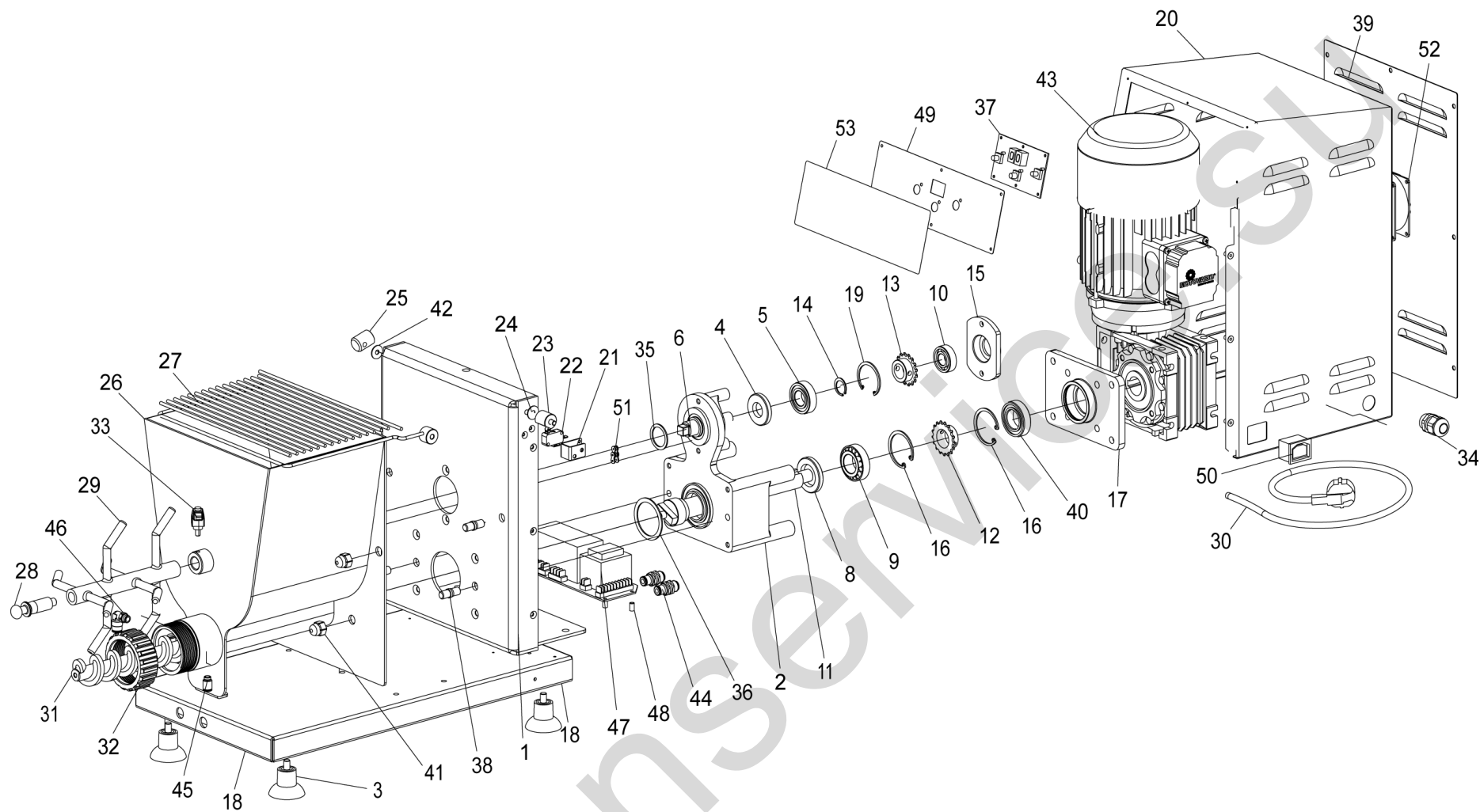


**SPARE PARTS**  
**TAVOLA RICAMBI**

**PF40E**

SPEC.	N.	CODE	DENOMINAZIONE - DENOMINATION	PRICE
	42	SL6477	WASHER - ROSETTA	
230V/1Ph/50Hz	43	SL1560	GEARMOTOR - MOTORIDUTTORE	
400V/1Ph/50-60Hz	43	SL1561	GEARMOTOR - MOTORIDUTTORE	
	44	SL1558	CONNECTOR - RACCORDO	
	45	SL4329	CONNECTOR - RACCORDO	
	46	SL4360	CONNECTOR - RACCORDO	
potenza	47	SL0999	Electronic card - Scheda elettronica	
	48	SL3190050	SPACER - DISTANZIALE	
	49	SL4327	PANEL - PANNELLO	
	50	SL1555	CONNECTOR - CONNETTORE	
	51	SL1553	CHAIN - CATENA	
	52	SL1556	FAN - VENTOLA	
	53	SL4375	Label - Etichetta	

\*Ricambio consigliato - Advised spare parts



POS.	CODE
42	SL6477
43	SL1560
43	SL1561
44	SL1558
45	SL4329
46	SL4360
47	SL0999
48	SL3190050
49	SL4327
50	SL1555
51	SL1553
52	SL1556
53	SL4375