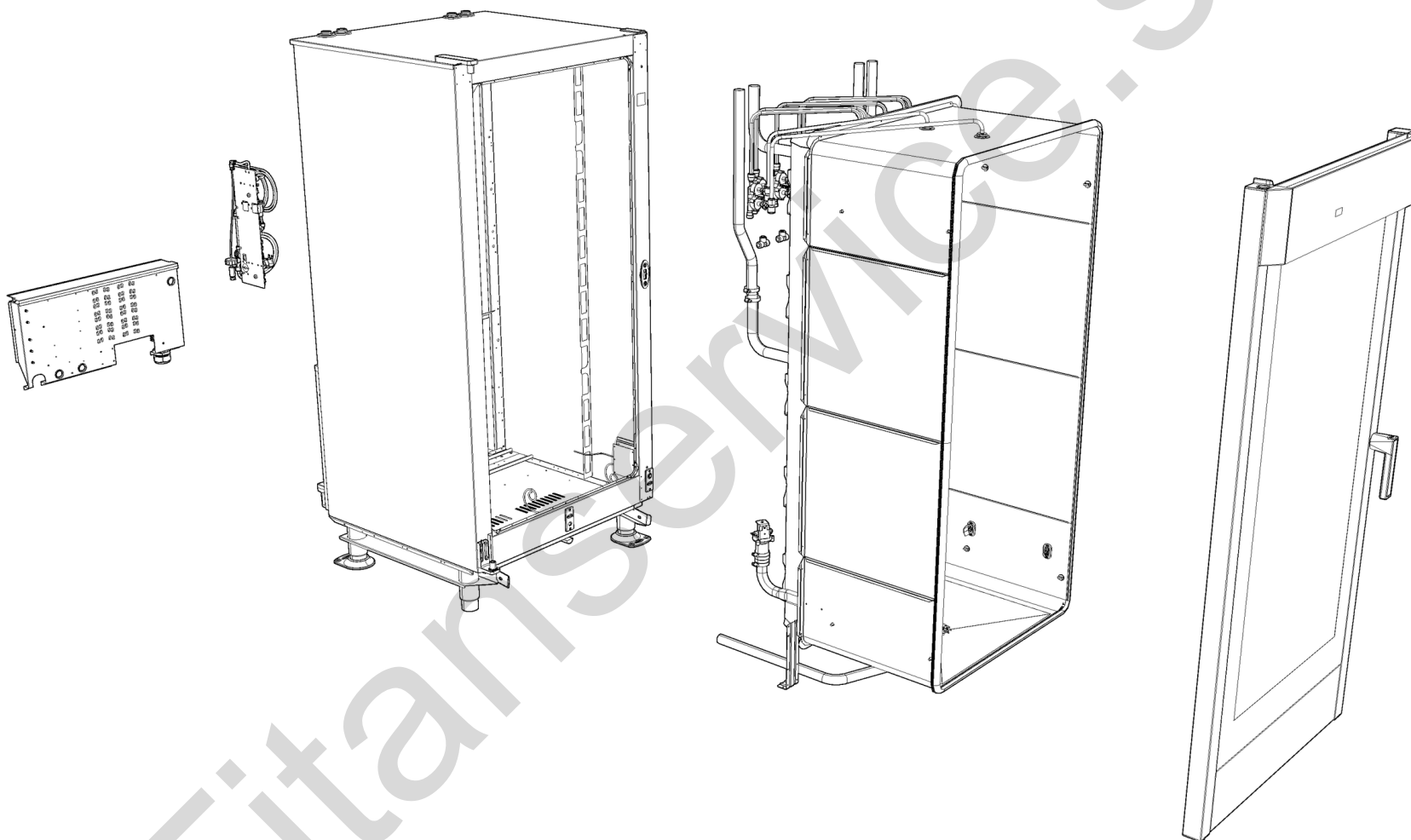
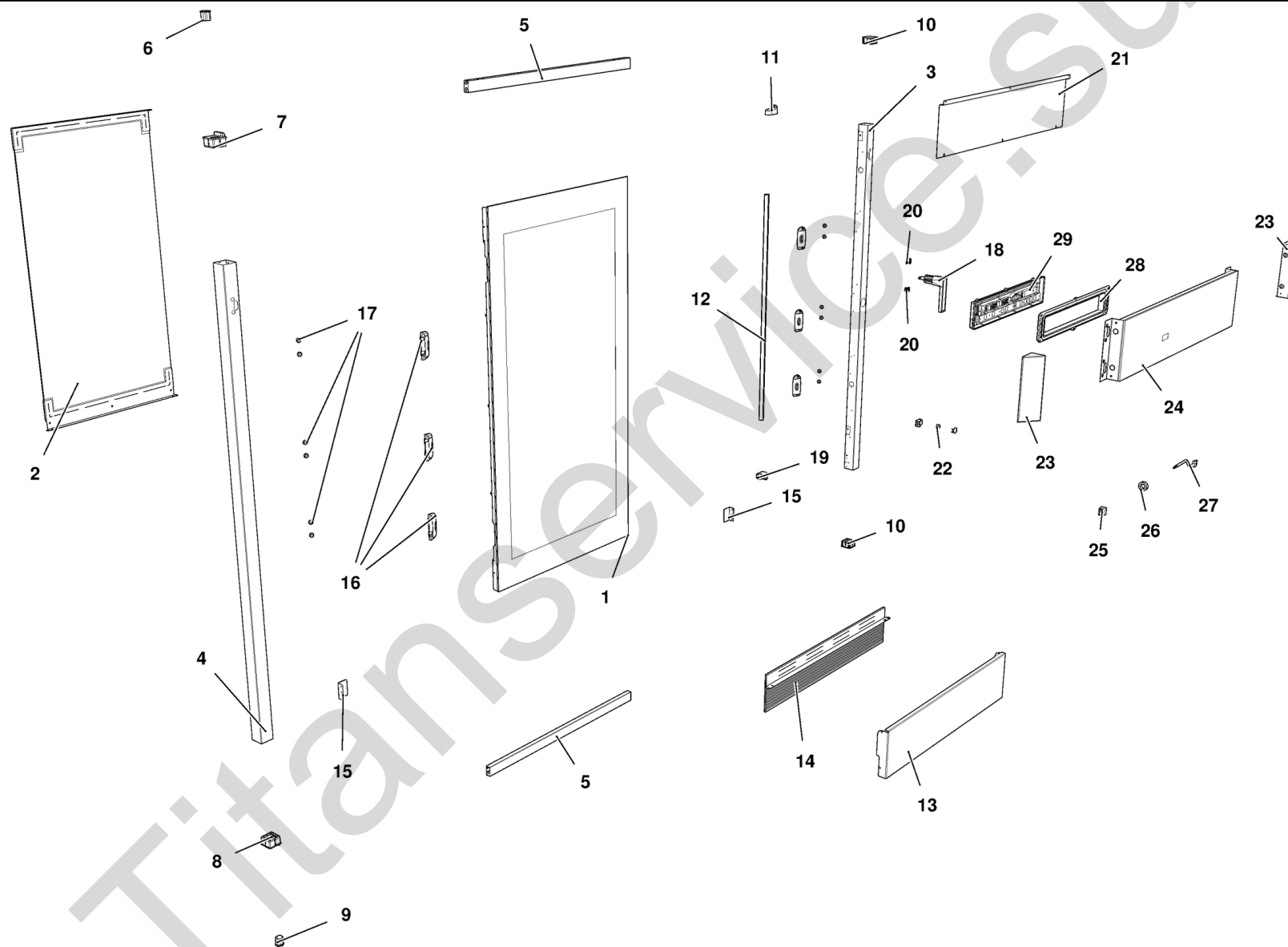


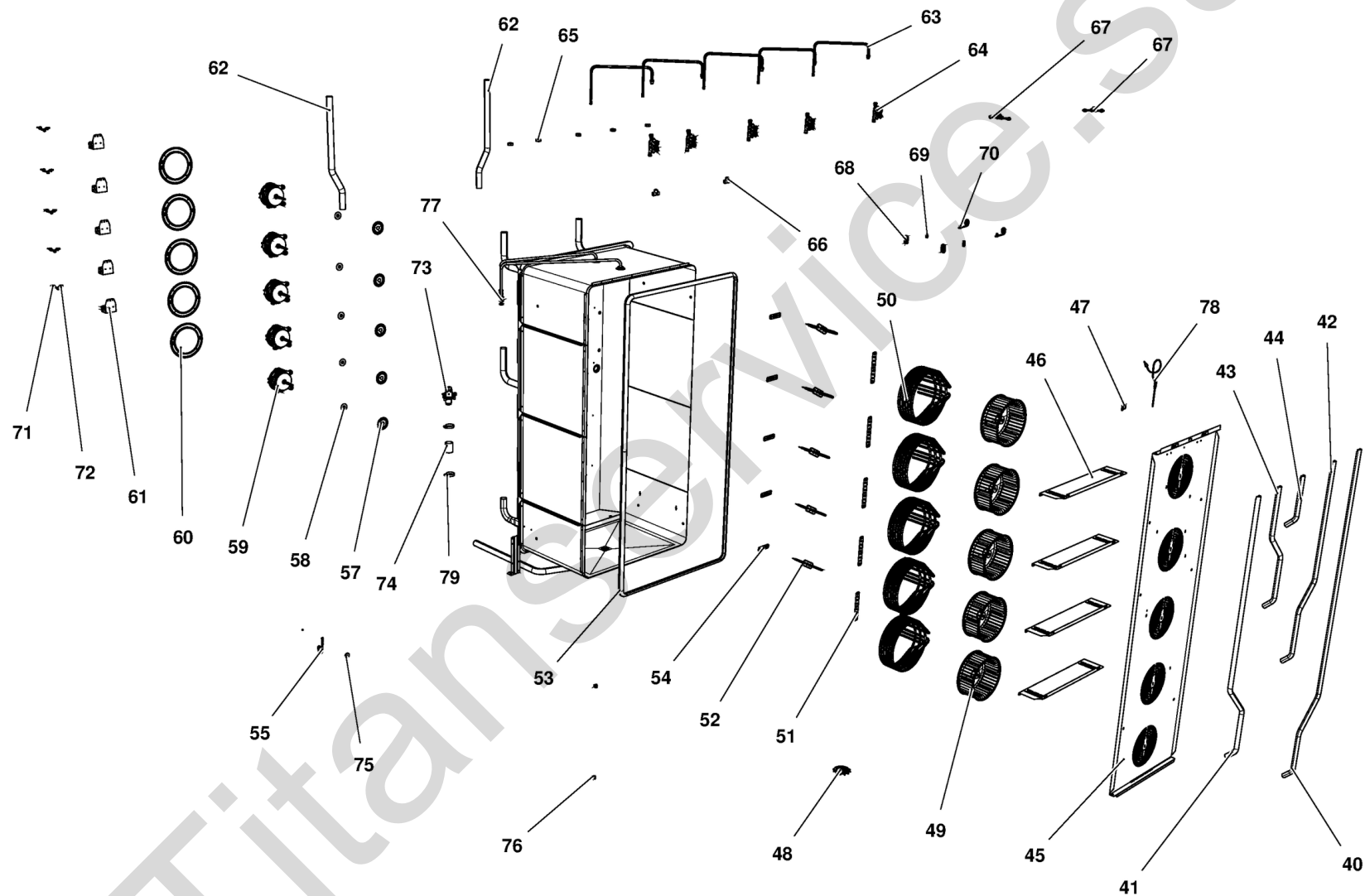
MOD:XBC1005E



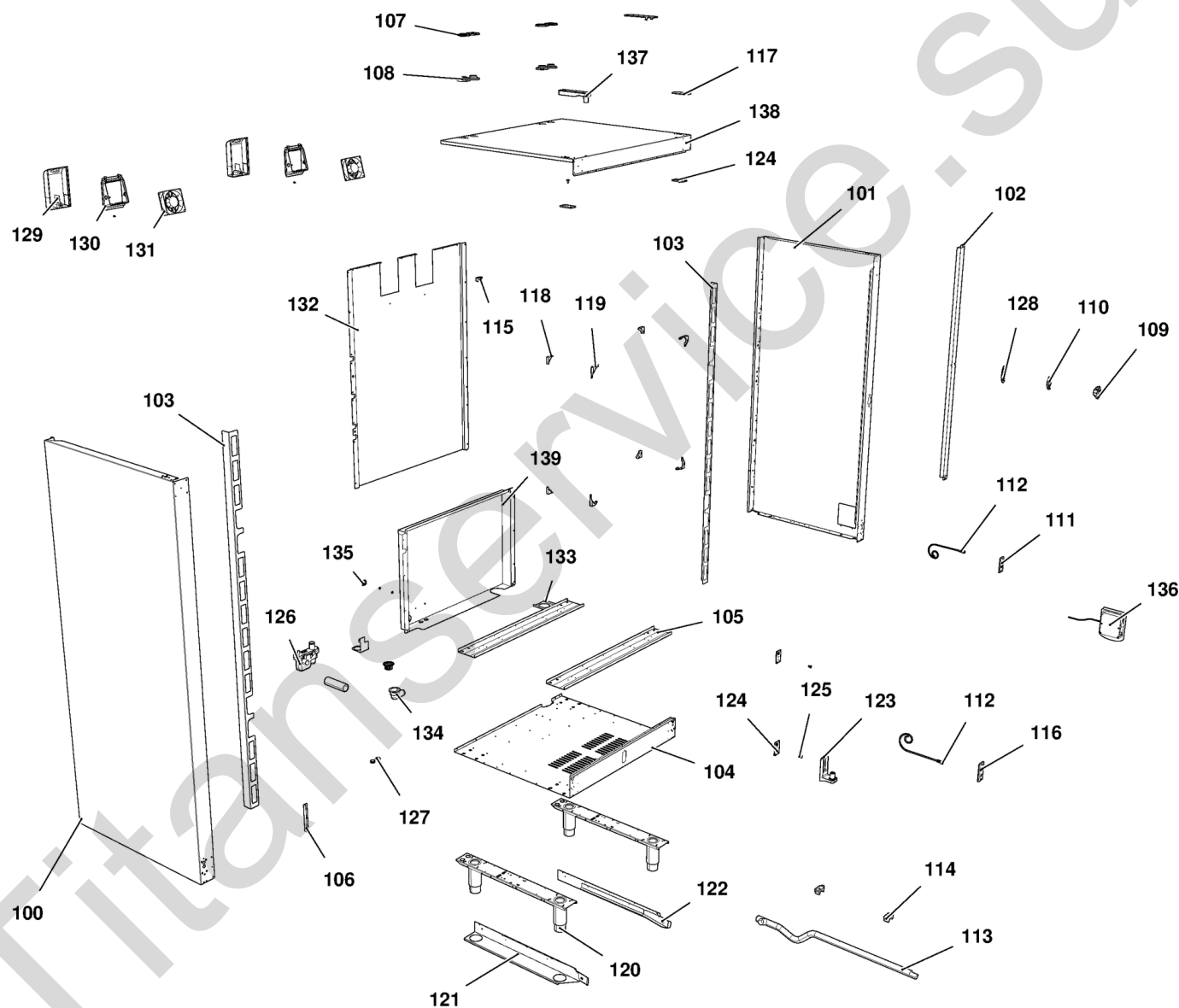
MOD:XBC1005E



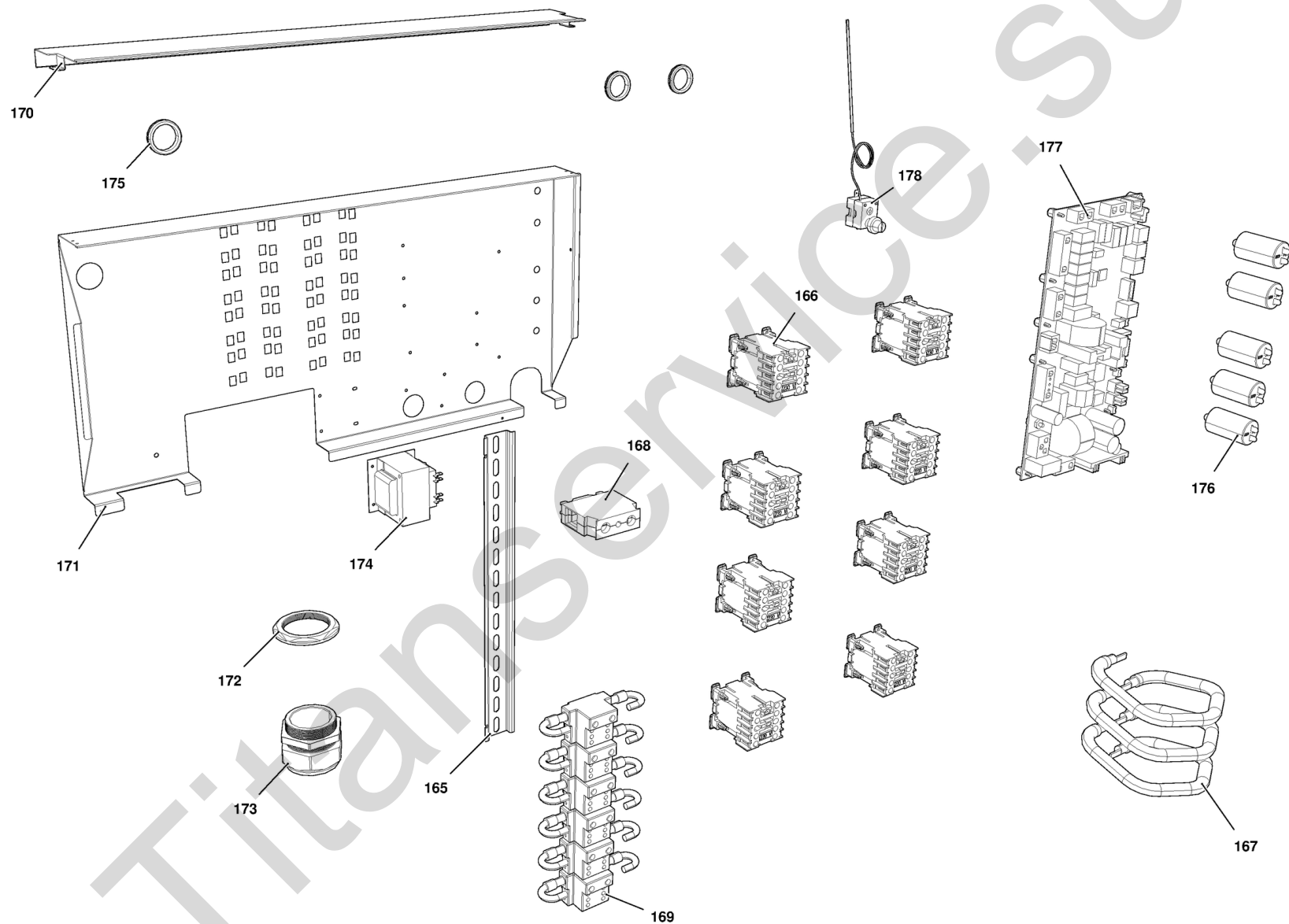
MOD:XBC1005E

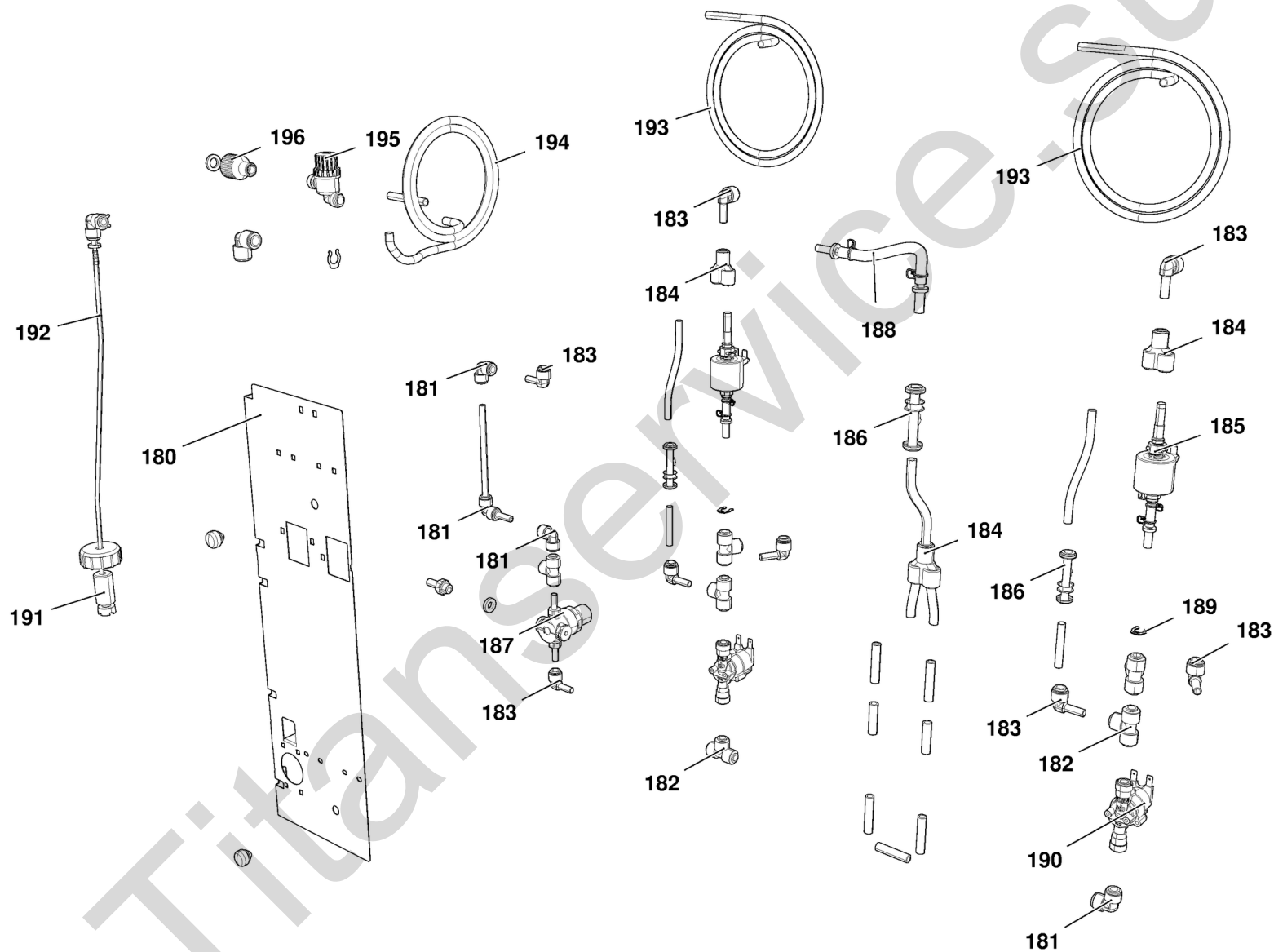


MOD:XBC1005E



MOD:XBC1005E





MOD:XBC1005E



IT

Descrizione codici

| | | |
|----|---------|-----------------------------------|
| 1 | VT1161A | VETRO ESTERNO SER. 757X1467X5 |
| 2 | VT1160A | VETRO INTERNO SER. 730X1395X6 |
| 3 | TB2454A | COLONNINA DX 1005E AISI-304 |
| 4 | TB2336A | COLONNINA SX SERIE 1000/3200/4000 |
| 5 | OH3170A | LIST. INF/SUP XVC1004/XBC1004 40x |
| 6 | VM1511A | BOCCOLA LISCIA PERNO PORTA CHEFFT |
| 7 | VM1170B | TAPPO FULCRO SUP. PORTA XVC204/30 |
| 8 | VM1171B | TAPPO FULCRO INF. PORTA XVC204/30 |
| 9 | VM1510A | BOCCOLA SCANALATA PERNO PORTA XBC |
| 10 | VM1175A | TAPPO ESTETICO COLONNINA PORTA |
| 11 | VM1620A | SUPPORTO INF BARRA LED |
| 12 | LP1004B | BARRA ILLUMINAZIONE LED L1000 |
| 13 | OH6458A | PROFILO INFERIORE PORTA XVC1005E/ |
| 14 | GN1348E | GUARNIZIONE PORTA-CARRELLO GN1341 |
| 15 | OH6445A | LAMIERA CAMMA PORTA BIG S.5E |
| 16 | VM1591A | STAFFA SPINGIVETRO INTERNO XVC100 |
| 17 | VM1630A | TAPPO PREMI VETRO INTERNO |
| 18 | VM1180B | IMPUGNATURA MANIGLIA CT BT |
| 19 | VM1621A | SUPPORTO SUP BARRA LED |
| 20 | VM1490A | COPRI VITI MANIGLIA CHEFTOP BAKER |
| 21 | OH4450A | LAMIERA CHIUSURA POST. CRUSCOTTO |
| 22 | VE1030A | CALAMITA D=22,9mm PER MICROPORTA |
| 23 | OH6720A | FIANCHETTO CRUSCOTTO COMANDI |
| 24 | VT1170B | VETRO CRUSCOTTO SER. 757X170X4 XV |
| 25 | CE1290A | MORSETTO FEMMINA ESTRAIBILE CPF 5 |
| 26 | CE1285A | FERRITE EMI ROUND MOD. 2643801502 |
| 27 | CE1310A | CAVO COLLEGAMENTO POTENZA CONTROL |
| 28 | VM1145A | CORNICE CRUSCOTTO C.T. |
| 29 | PE1740C | SCHEDA CONTROLLO PE1705 CT BT |
| 40 | TB2334A | TUBO INT. UMIDITA' DX Ø16x1 |
| 41 | TB2333A | TUBO INT. UMIDITA' DX Ø16x1 |

| | | |
|----|---------|-----------------------------------|
| 42 | TB2332A | TUBO INT. UMIDITA' DX Ø16x1 |
| 43 | TB2331A | TUBO INT. UMIDITA' SX Ø16x1 |
| 44 | TB2330A | TUBO INTERNO UMIDITA' CENT. Ø16x1 |
| 45 | OG1495A | CARTER ARIA SERIE 1005E |
| 46 | OG1396A | DISTANZIALE CARTER ARIA |
| 47 | OH6345A | PIASTRINA FORATA SUPP SONDA AL CU |
| 48 | OH2551A | TAPPO PER TUBO DI SCARICO LIQUIDI |
| 49 | VN1030A | VENTOLA D196 H81 39 PALE DADO M8 |
| 50 | RS1205A | RES. CIRCOLARE 5600W 230V D230 6 |
| 51 | GN1085A | GUARNIZIONE RESISTENZA 141x24 G6. |
| 52 | RS1215A | RES. PIANA 147W 105V D230 1 SPIRA |
| 53 | GN1392C | GN1006A-GUARNIZIONE PORTA XVC1005 |
| 54 | GN1326A | GUARNIZIONE RESISTENZA 71x19 G6.2 |
| 55 | PE1710A | SENSORE NUMERO GIRI MOTORE |
| 57 | OH4305A | DISCO TENUTA ALBERO MOTORE INOX S |
| 58 | GN1140A | GUARNIZIONE PORTAMOTORE STAMP. |
| 59 | VN1130A | MOTORE FORNO 330W 230V 50/60HZ |
| 60 | OH3586A | LAMIERA PROTEZIONE MOTORE ZINCATO |
| 61 | OH4851A | STAFFA CABLAGGIO CT BT - |
| 62 | TB1873A | TUBO CONVOGLIATORE FUMI SERIE 100 |
| 63 | TB1515A | TUBO EST. UMIDITA' + RC1165A0 |
| 64 | EL1361A | ELETTROVALVOLA TRI-STADIO JG D8-D |
| 65 | RC1170A | DADO M14 H=8 CH=22 INOX |
| 66 | EL1020A | RACCORDO INTERMEDIO "T" TUBO ø8 |
| 67 | VM1955B | CORPO GIRANTE LAVAGGIO |
| 68 | VM1465A | COPERCHIO SONDA TEMPERATURA CHEFT |
| 69 | GN1285A | GUARNIZIONE SONDA DI TEMPERATURA |
| 70 | TR1106A | SONDA TEMPERATURA PT100 L2000 |
| 71 | VM1610A | CLIP TWIST LOCK DIAM. 7,6-10,2 MM |
| 72 | RC1310A | FASCETTA RICCO 140X4 CON CLIP |
| 73 | VE1135A | ATTUATORE VENTURI 220V 50/60 Hz S |

| | | |
|-----|---------|-----------------------------------|
| 74 | TB1956A | TB1520A-TUBO NERO EPDM L=50 |
| 75 | VM1635A | DISCO SUPPORTO MAGNETE |
| 76 | VM1820A | NOTTOLINO M6 CROMATO FISS. SUPPOR |
| 77 | EL1055A | RIDUZIONE INTERMEDIA D10-D8 |
| 78 | SN1012A | SONDA CUORE MULTIPUNTO L2730 |
| 79 | RC1378A | FASCETTA STRINGI TUBO ZINCATA |
| 100 | OD2182A | FIANCO SX XVC1005/4005 |
| 101 | OD2183A | FIANCO DX XVC1005/4005 |
| 102 | OH3280A | LAMIERA REGGI SROCCO XVC1004 XBC1 |
| 103 | OH3750A | LAMIERA INOX RINFORZO FIANCO XVC1 |
| 104 | OE1319A | FONDO EST SERIE 905E-1005E |
| 105 | OH3290A | TRAVERSO DI SOSTEGNO XVC1005E/400 |
| 106 | OH6731A | PARATIA PROTEGGI STAFFA 1005E AIS |
| 107 | OH3790A | LAMIERA TENUTA CAMINO |
| 108 | GN1275A | GUARNIZIONE CAMINO SILICONE NERO |
| 109 | VM1190A | SCROCCO MANIGLIA DX CT BT |
| 110 | VM1192A | COPERCHIO SCROCCO MANIGLIA CT BT |
| 111 | VM1201A | PIASTRINA SUPPORTO MICROPORTA MAG |
| 112 | VE1020A | MICROINTERRUTTORE PORTA MAGNETICO |
| 113 | TB2298A | TUBO SCARICO ACQUA CARRELLATI GN1 |
| 114 | VM2036A | SUPPORTO TUBO SCARICO ACQUA |
| 115 | VM1810A | TAPPO TENUTA ACQUA DX |
| 116 | VM1200A | PIASTRINA SUPPORTO MICROPORTA MEC |
| 117 | VM1195A | PIASTRINA COPRIFORI XVC204/304/50 |
| 118 | VM1008A | ANGOLARE INT. SUPPORTO GUARNIZION |
| 119 | OH1450A | ANGOLO FACCIATA MUFFOLA INOX XB-X |
| 120 | PD1020A | LONGHERONE PIEDINI 2" REG H147-19 |
| 121 | OH5045A | ASM GUIDE CARRELLO SX SERIE 1000 |
| 122 | OH5044A | ASM GUIDE CARRELLO DX SERIE 1000 |
| 123 | VM1160B | STAFFA INFERIORE PORTA CT BT |
| 124 | OH2560A | CONTROSTAFFA ZINCATA PORTA C.T. |

| | | |
|-----|---------|-----------------------------------|
| 125 | VM1240A | TAPPO NYLON SUPPORTO CONTROSTAFFA |
| 126 | VL1005A | VASCA SIFONE |
| 127 | VM1505A | PASSAPARETE CON DIAFRAMMA |
| 128 | VM1455A | COPERCHIO PER SCROCCO FORNO XVC-X |
| 129 | VM1556A | PROTEZIONE VENTOLA RAFFREDDAMENTO |
| 130 | VM1555A | SUPPORTO VENTOLA RAFFREDDAMENTO C |
| 131 | VN1163A | VENTOLA RAFFREDDAMENTO 230V |
| 132 | OF1473A | SCHIENA SUP 2 VENTOLE SERIE 1000- |
| 133 | OH7040A | LAMIERA SUPPORTO PRESSACAVO |
| 134 | VL1026A | CURVA PER TUBO DI SCARICO |
| 135 | VM1750A | MORSETTIERA A PETTINE |
| 136 | PE1971B | ASM SCHEDA UNOX.LINK MODBUS RJ45+ |
| 137 | VM1165B | STAFFA SUPERIORE PORTA CT BT |
| 138 | OD2238A | COPERCHIO 2 VENTOLE SERIE 905-100 |
| 139 | OF1465B | SCHIENA INFERIORE 1005E AISI-304 |
| 165 | OH1852A | BARRA OMEGA PORTA 6 TELERUTTORI P |
| 166 | VE1115A | MINICONTATTORE QUADRIPOLORE 20 A |
| 167 | CE1770A | CAVO UNIPOLARE 16 MMQ L=280 TERMI |
| 168 | MR1011A | MORSETTO DI TERRA UL 125A PER BAR |
| 169 | CE1420A | MORSETTIERA UNIPOLARE 8 VIE Z16-8 |
| 170 | OH7079A | LAMIERA PASSA CAVI |
| 171 | OH7035A | PORTACOMPONENTI EL 5 MOTORI |
| 172 | VE1629A | DADO PRESSACAVO PG 48 |
| 173 | VE1628A | PRESSACAVO PG 48 RIDOTTO |
| 174 | VE1026A | TRASFORMATORE 230-21-12Vac 80VA |
| 175 | GN1045A | GUARN.ANTIVIBR. CAMINO-SCARICO |
| 176 | CN1003A | CONDENSATORE CORAZZATO 6,3 uF |
| 177 | PE1725E | SCHEDA POTENZA FORNI CT-BT SS.E |
| 178 | TR1136A | TERMOSTATO SIC. UNIP. 330°C |
| 180 | OH6441A | SUPPORTO IMPIANO IDRICO DOPPIO VE |
| 181 | EL1185B | RACCORDO GOMITO D8F-D8F |

| | | |
|-----|---------|-----------------------------------|
| 182 | EL1020A | RACCORDO INTERMEDIO "T" TUBO ø8 |
| 183 | EL1195B | RACCORDO GOMITO D8F-D8M |
| 184 | EL1115B | RACCORDO Y D8 |
| 185 | VL1038A | POMPA VIBRAZIONE |
| 186 | EL1180A | RACCORDO NON RITORNO ø8 ø8 FEMMIN |
| 187 | VL1014A | RIDUTTORE DI PRESSIONE CON DISTRI |
| 188 | TB2429A | TUBO PVC ø9X6 L 250 MM |
| 189 | EL1345A | CLIP BLOCCA PINZETTA RACCORDI ø8 |
| 190 | EL1411A | ELETTROVALVOLA H2O CON CHECK VALV |
| 191 | VL1044A | KIT FILTRO E AFFONDANTE |
| 192 | TB2242A | TUBO ø6 LAVAGGIO 2M |
| 193 | TB2235A | ROCCETTO DETERGENTE TUBO ø8 |
| 194 | TB2237A | TUBO ø10 ALLACCIAMENTO RETE |
| 195 | VL1034A | FILTRO ACQUA ø10 MESH100 |
| 196 | RC1365A | RACCORDO JG FEMMINA 3/4"-10 |

MOD:XBC1005E



EN

Codes descriptions

| | | |
|----|---------|-----------------------------------|
| 1 | VT1161A | SER. EXTERNAL GLASS 757X1467X5 |
| 2 | VT1160A | SER. INTERNAL GLASS 730X1395X6 |
| 3 | TB2454A | 1005E RIGHT DOOR COLUMN |
| 4 | TB2336A | S.5E LEFT DOOR COLUMN 1000/3200/4 |
| 5 | OH3170A | UPPER/LOWER DOOR LISTEL XVC1004/X |
| 6 | VM1511A | XBC/XVC SLEEK DOOR PIN BUSHING |
| 7 | VM1170B | UPPER DOOR FULCRUM CAP |
| 8 | VM1171B | DOOR LOWER FULCRUM CAP |
| 9 | VM1510A | XBC/XVC GROOVED DOOR PIN BUSHING |
| 10 | VM1175A | DOOR COLUMN BLANKING CAP |
| 11 | VM1620A | LED BAR LOWER SUPPORT |
| 12 | LP1004B | LEB LIGHTING BAR L1000 |
| 13 | OH6458A | XVC1005E/XBC1005 LOWER DOOR PROFI |
| 14 | GN1348E | E SERIES DOOR-TROLLEY SEALING H14 |
| 15 | OH6445A | E SERIES TROLLEY OVENS CAM PLATE |
| 16 | VM1591A | GLASS BRACKET INT. XVC1004 |
| 17 | VM1630A | INTERNAL GLASS PUSHING CAP |
| 18 | VM1180B | ChefTop/BakerTop HANDLE HAFT |
| 19 | VM1621A | LED BAR UPPER SUPPORT |
| 20 | VM1490A | CHEFTOP/BAKERTOP HANDLE SCREWS CO |
| 21 | OH4450A | CLOSING PLATE BACK COVER |
| 22 | VE1030A | MAGNET FOR DOOR MICROSWITCH D=22, |
| 23 | OH6720A | CONTROL BOARD EXTERNAL LATERAL SI |
| 24 | VT1170B | XVC1005 CONTROL PANEL GLASS 757X1 |
| 25 | CE1290A | EXTRACTABLE FEMALE TERMINAL CPF 5 |
| 26 | CE1285A | EMI ROUND FERRITE MOD.2643801502 |
| 27 | CE1310A | POWER - CONTROL BOARD CONNECTING |
| 28 | VM1145A | C.T. BOARD FRAME |
| 29 | PE1740C | CT BT CONTROL BOARD PE1705 + BOAR |
| 40 | TB2334A | INTERNAL RIGHT WATER PIPE Ø16x1 |
| 41 | TB2333A | INTERNAL RIGHT WATER PIPE Ø16x1 |

| | | |
|----|---------|-----------------------------------|
| 42 | TB2332A | INTERNAL RIGHT WATER PIPE Ø16x1 |
| 43 | TB2331A | INTERNAL LEFT WATER PIPE Ø16x1 |
| 44 | TB2330A | INTERNAL CENTRAL WATER PIPE Ø16x1 |
| 45 | OG1495A | 1005E SERIES FAN GUARD |
| 46 | OG1396A | B.T. C.T. FAN GUARD SPACER |
| 47 | OH6345A | CORE PROBE SUPPORT PERFORATED PLA |
| 48 | OH2551A | XBC/XVC ST.STEEL DRAIN COVER |
| 49 | VN1030A | MOTOR FAN D196 H81 39 BLADE NUT M |
| 50 | RS1205A | 5600W 230V D230 6 TURNS HEATING E |
| 51 | GN1085A | HEATING ELEMENT GASKET 141x24 G6. |
| 52 | RS1215A | 147W 105V D230 1 TURN FLAT ELEMEN |
| 53 | GN1392C | XVC1005-4005 DOOR GASKET - GN1006 |
| 54 | GN1326A | ELEMENT SEALING 70X22X0.8 |
| 55 | PE1710A | MOTOR REVOLUTIONS SENSOR |
| 57 | OH4305A | ST. STEEL MOTOR SHAFT SEALING DIS |
| 58 | GN1140A | MOLDED MOTOR SUPPORT GASKET |
| 59 | VN1130A | 330W 230V 50/60HZ MOTOR |
| 60 | OH3586A | ZINCATE MOTOR GUARD PLATE XBC-XVC |
| 61 | OH4851A | BT CT WIRING SUPPORT BRACKET |
| 62 | TB1873A | CONVEYOR FUME TUBE SERIES 1005 Ø3 |
| 63 | TB1515A | EXTERNAL WATER PIPE + RC1165A0 |
| 64 | EL1361A | J.G. THREE-STAGE SOLENOID VALVE D |
| 65 | RC1170A | STAINLESS STEEL NUT M14 H=8 CH=22 |
| 66 | EL1020A | INTERMEDIATE "T" CONNECTION ø8 |
| 67 | VM1955B | WASHIG SYSTEM ROTOR |
| 68 | VM1465A | CHEFTOP TEMPERATURE PROBE COVER |
| 69 | GN1285A | NTC TEMPERATURE PROBE SEALING |
| 70 | TR1106A | TEMPERATURE PROBE PT100 L=2000 |
| 71 | VM1610A | CLIP TWIST LOCK DIAM. 7,6-10,2 MM |
| 72 | RC1310A | 140x4 CLAMP WITH CLIP |
| 73 | VE1135A | VENTURI ACTUATOR 220 V 50/60 Hz S |

| | | |
|-----|---------|-----------------------------------|
| 74 | TB1956A | TB1520A - EPDM BLACK PIPE L=50 |
| 75 | VM1635A | MAGNET HOLDING DISC |
| 76 | VM1820A | LATERAL SUPPORTS M6 FIXING BOLTS |
| 77 | EL1055A | INTERMEDIATE REDUCTION FROM D=10 |
| 78 | SN1012A | MULTI.Point CORE PROBE L2730 |
| 79 | RC1378A | HOSE CLAMP |
| 100 | OD2182A | XVC1005/4005 LEFT SIDE EXTERNAL P |
| 101 | OD2183A | XVC1005/4005 RIGHT SIDE EXTERNAL |
| 102 | OH3280A | XVC1004 XBC1004 SPRING LATCH HOLD |
| 103 | OH3750A | INOX PLATE REINFORCEMENT SIDE XVC |
| 104 | OE1319A | 905E-1005E EXTERNAL BOTTOM PANEL |
| 105 | OH3290A | XVC1005E/4005E CROSS BAR |
| 106 | OH6731A | 1005E BRACKET GUARD |
| 107 | OH3790A | CHIMNEY HOLDING PLATE |
| 108 | GN1275A | XBC/XVC BLACK CHIMNEY SEALING |
| 109 | VM1190A | CT BT RIGHT DOOR SPRING LATCH |
| 110 | VM1192A | CT BT DOOR SPRING LATCH COVER |
| 111 | VM1201A | MAGNETIC SUPPORT PLATE FOR DOOR M |
| 112 | VE1020A | MAGNETIC DOOR MICROSWITCH |
| 113 | TB2298A | TROLLEY OVENS WATER DRAIN PIPE Ø3 |
| 114 | VM2036A | DRAIN WATER PIPE SUPPORT |
| 115 | VM1810A | WATER RIGHT CAP SEAL |
| 116 | VM1200A | DOOR MECHANIC MICROSWITCH SUPPORT |
| 117 | VM1195A | HOLES BLANKING PLATE XVC204/304/5 |
| 118 | VM1008A | GASKET SUPPORT INTERNAL CORNER |
| 119 | OH1450A | XB-XV-XG ST. STEEL MUFFLE FRONT C |
| 120 | PD1020A | BRACKET FOR 2" ADJUSTABLE FEET H |
| 121 | OH5045A | 1000 SERIES LEFT TROLLEY GUIDES |
| 122 | OH5044A | 1000 SERIES RIGHT TROLLEY GUIDES |
| 123 | VM1160B | CT BT DOOR LOWER BRACKET |
| 124 | OH2560A | XBC/XVC ZINC PLAT. DOOR COUNTERBR |

| | | |
|-----|---------|-----------------------------------|
| 125 | VM1240A | NYLON SUPPORT CAP |
| 126 | VL1005A | U-TRAP TANK |
| 127 | VM1505A | WALL PASSING WITH DIAPHRAGM |
| 128 | VM1455A | SPRING LATCH COVER XVC-XBC1004 |
| 129 | VM1556A | XBC-XVC COOLING FAN GUARD |
| 130 | VM1555A | CT BT COOLING DOWN FAN SUPPORT |
| 131 | VN1163A | COOLING FAN 230V |
| 132 | OF1473A | 1000-4000 SERIES EXTERNAL UPPER P |
| 133 | OH7040A | STAINLESS STEEL WIRE CLAMP SUPPOR |
| 134 | VL1026A | BEND FOR DRAIN PIPE |
| 135 | VM1750A | TERMINAL BOARD |
| 136 | PE1971B | UNOX.LINK MODBUS RJ45+USB |
| 137 | VM1165B | CT BT DOOR UPPER BRACKET |
| 138 | OD2238A | 905E-1005E SERIES COVER |
| 139 | OF1465B | XAV4005EP EXTERNAL LOWER BACK PAN |
| 165 | OH1852A | OMEGA BAR 6 CONTACTORS HOLDER PRO |
| 166 | VE1115A | MINICONTACTOR WITH 4 POLES 20 A 2 |
| 167 | CE1770A | UNIPOLAR CABLE 16 MMQ L=280 |
| 168 | MR1011A | UL 125A GROUND TERMINAL |
| 169 | CE1420A | 8 WAYS UNIPOLAR TERMINAL BOARD Z1 |
| 170 | OH7079A | STAINLESS STEEL WIRE PASS SUPPORT |
| 171 | OH7035A | E SERIES COMPONENTS HOLDER PROFIL |
| 172 | VE1629A | WIRE CLAMP NUT PG 48 |
| 173 | VE1628A | WIRE CLAMP PG48 REDUCED |
| 174 | VE1026A | TRANSFORMER 230-21-12Vac 80VA |
| 175 | GN1045A | ANTIVIBR.SEAL FOR EXHAUST CHIMNEY |
| 176 | CN1003A | CONDENSER6,3 Uf |
| 177 | PE1725E | E SERIES CHEFTOP-BAKERTOP POWER C |
| 178 | TR1136A | SAFETY THERMOSTAT UNIP. 330°C |
| 180 | OH6441A | DOUBLE VERTICAL WATER SUPPLY SUPP |
| 181 | EL1185B | D8F-D8F ELBOW FITTING |

| | | |
|-----|---------|-----------------------------------|
| 182 | EL1020A | INTERMEDIATE "T" CONNECTION ø8 |
| 183 | EL1195B | D8F-D8M ELBOW CONNECTION |
| 184 | EL1115B | Y D8 CONNECTION |
| 185 | VL1038A | VIBRATION PUMP |
| 186 | EL1180A | ø8 ø8 FEMALE NON-RETURN CONNECTIO |
| 187 | VL1014A | PRESSURE REDUCER WITH DISTRIBUTOR |
| 188 | TB2429A | PVC PIPE Ø9X6 L 250 MM |
| 189 | EL1345A | CLIP TO FIX ø08 mm CONNECTION JOI |
| 190 | EL1411A | SOLENOID VALVE WITH CHECK VALVE |
| 191 | VL1044A | HOLD DOWN WEIGHT WITH FILTER |
| 192 | TB2242A | WASHING SYSTEM PIPE Ø6 2M |
| 193 | TB2235A | ø8 DETERGENT PIPE COIL |
| 194 | TB2237A | ø10 WATER MAIN CONNECTION PIPE |
| 195 | VL1034A | ø10 MESH100 WATER FILTER |
| 196 | RC1365A | 3/4"-10 JG FEMALE CONNECTION |