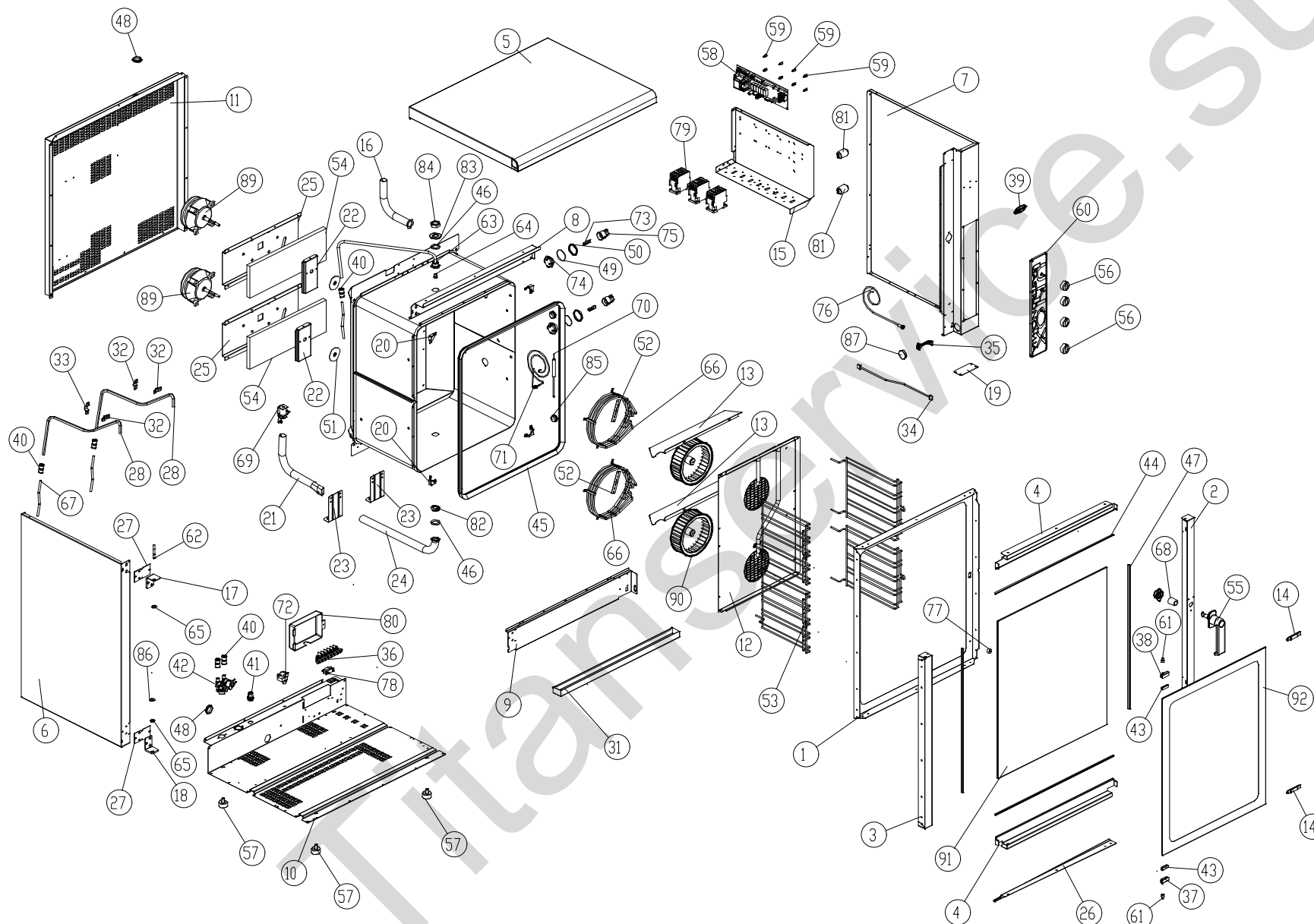


MOD: XV703G

EXPLODED VIEW DISEGNO ESPLOSO



LEGEND - LEGENDA

| | | | |
|----|-----------|----|----------|
| 1 | OB1045A2 | 56 | MN121A |
| 2 | OB1050A1 | 57 | PD061A |
| 3 | OB1055A0 | 58 | PE1010B1 |
| 4 | OB1060A0 | 59 | PE102 |
| 5 | OD1025B0 | 60 | PE1050B2 |
| 6 | OD1030C0 | 61 | RC1000B0 |
| 7 | OD1031C0 | 62 | RC1035A0 |
| 8 | OD1035B0 | 63 | RC1136A0 |
| 9 | OD1036B0 | 65 | RC540 |
| 10 | OE1005C3 | 66 | RS1050A0 |
| 11 | OF1015C3 | 67 | TB008 |
| 12 | OG1020B1 | 68 | TB1005A0 |
| 13 | OG1035B0 | 69 | VE1135A0 |
| 14 | 2H032 | 70 | TR1000A4 |
| 15 | OH1005E0 | 71 | TR1005A2 |
| 16 | OH1015A1 | 72 | TR255B |
| 17 | OH1020A0 | 73 | VE1005A1 |
| 18 | OH1021A0 | 74 | VE1010A1 |
| 19 | OH1030A2 | 75 | VE1015A1 |
| 20 | OH1450A0 | 76 | VE1020A0 |
| 21 | OH1050A2 | 77 | VE1030A1 |
| 23 | OH1065A0 | 78 | VE1075A0 |
| 24 | OH1075A0 | 79 | VE1095A0 |
| 25 | OH2010A0 | 80 | VE1100A0 |
| 26 | OH1105A3 | 81 | VE221 |
| 27 | OH1140A2 | 82 | VI1030A2 |
| 28 | OH1500A0 | 83 | VI1235A0 |
| 31 | OM1005A2 | 84 | VI1245A0 |
| 32 | 2H070 | 85 | VI1515A1 |
| 33 | 2H072 | 86 | VI524 |
| 34 | CE1000C0 | 87 | VM1005A0 |
| 35 | CE1005B0 | 88 | VM250 |
| 36 | CE212 | 89 | VN1000B0 |
| 37 | CR045 | 90 | VN1025A2 |
| 38 | CR046 | 91 | VT1015A0 |
| 39 | ED1070A0 | 92 | VT1016A0 |
| 40 | EL1055A0 | | |
| 41 | EL1125A0 | | |
| 42 | EL1160A0 | | |
| 43 | GN006A | | |
| 44 | GN100 | | |
| 45 | GN1000B0 | | |
| 46 | GN1010A0 | | |
| 47 | GN102 | | |
| 48 | GN1045A0 | | |
| 49 | GN1055A0 | | |
| 50 | GN1065A1 | | |
| 51 | GN1140A0 | | |
| 52 | GN224 | | |
| 53 | GRL1045A1 | | |
| 55 | MG1000A0 | | |

MOD: XV703G

EXPLODED VIEW DISEGNO ESPLOSO



DESCRIZIONE CODICI

| | | |
|----|-----------|--|
| 1 | OB1045A2 | PORTA INTERNA INOX SERIE 700 |
| 2 | OB1050A1 | COLONNINA LATERALE DX INOX XV703G |
| 3 | OB1055A0 | COLONNINA LATERALE SX INOX XV703G |
| 4 | OB1060A0 | LISTELLO SUP./INF. PORTA INOX SERIE XV303/703G |
| 5 | OD1025B0 | COPERCHIO INOX XV303/703G |
| 6 | OD1030C0 | FIANCO SX INOX XV703G |
| 7 | OD1031C0 | FIANCO DX INOX XV703G |
| 8 | OD1035B0 | PROFILO SUP. INOX FACCIA MUFFOLA XV303/703G |
| 9 | OD1036B0 | PROFILO INF. INOX FACCIA MUFFOLA XV303/703G |
| 10 | OE1005C3 | FONDO ESTERNO INOX SERIE 300-700 |
| 11 | OF1015C3 | SCHIENA INOX SERIE 700 |
| 12 | OG1020B1 | CARTER ARIA INOX SERIE 700 |
| 13 | OG1035B0 | DIST. CARTER ARIA INOX XV303G/703G |
| 14 | 2H032 | LAMIERA FERMA PORTA FREDDA LAVATO |
| 15 | OH1005E0 | LAMIERA PORTACOMPONENTI SERIE XB-XV |
| 16 | OH1015A1 | CAMINO FUMI D-EST=30 SP=1 INOX XB-XV |
| 17 | OH1020A0 | STAFFA SUP. SUPPORTO PORTA |
| 18 | OH1021A0 | STAFFA INFERIORE SUPP. PORTA |
| 19 | OH1030A2 | TAPPO INF. CHIUSURA CRUSCOTTI |
| 20 | OH1450A0 | ANGOLO FACCIA MUFFOLA INOX XB-XV-XG L.M. |
| 21 | OH1050A2 | TUBO VENTURI D-EST=30 SP=1 INOX XB-XV-XG |
| 23 | OH1065A0 | NUOVO SOSTEGNO MUFFOLA STANDARD |
| 24 | OH1075A0 | TUBO SCARICO INOX ø30x1.5 SERIE XV |
| 25 | OH2010A0 | PROFILO SOSTEGNO MOTORE XV303G/703G |
| 26 | OH1105A3 | PROF.SALVA-GOCIA INOX XV303G/703G |
| 27 | OH1140A2 | CONTROSTAFFA PORTA XB-XG-XV |
| 28 | OH1500A0 | TUBO ESTERNO UMIDITA' SERIE XB-XV |
| 31 | OM1005A2 | CASSETTO RACCOGLI GOCCE XV303/703G |
| 32 | 2H070 | PROFILO FERMA TUBO UMIDITA' LAVATO |
| 33 | 2H072 | OMEGA DOPPIO FERMA TUBO UM. XV401/501/XG410 |
| 34 | CE1000C0 | CAVO COLL. SCHEDA POT-CONTR 4 FILI VERS. 2003 UL CSA CON |
| 35 | CE1005B0 | CAVO COLLEG. SCHEDA-CONNETT.DB9F RS232 VERS. 2003 |
| 36 | CE212 | MORSETT. 5FK/7FTW GV V0 00160593 |
| 37 | CR045 | CERN.DX INOX XV-XL-XB |
| 38 | CR046 | CERN.SX INOX XV-XL-XB |
| 39 | ED1070A0 | ETICHETTA UNOX ELISSE 78x33 ARGENTO CON BORDO EST. |
| 40 | EL1055A0 | RIDUZIONE J.G. DA D=10 A D=8 PM201008E |
| 41 | EL1125A0 | PASSAPARETE Ø8 |
| 42 | EL1160A0 | ELETTRO DOPPIA ATT. J.GUEST INCORPORATO CON RID.ROSSO TA |
| 43 | GN006A | GUARN.PORTA FREDDA A BAND. PTFE CAR/CARB Sp=1mm |
| 44 | GN100 | PROFILO PORTA SIL NERO P346 XT |
| 45 | GN1000B0 | GUARNIZIONE NERA 50 SHORE FORNI XB-XG-XV |
| 46 | GN1010A0 | GUARN.PTFE+CARB NUOVO SCARICO ø42x28,5x2 |
| 47 | GN102 | PROFILO PORTA SIL NERO C121 XT |
| 48 | GN1045A0 | GUARN.ANTIVIBR. CAMINO-SCARICO ø131-øe39,9-Sp=7,5 |
| 49 | GN1055A0 | OR 46x2 VMQ 70 ROSSO |
| 50 | GN1065A1 | GUARNIZIONE PORTALAMPADA DE=53.2 DI=44.2 SP=3.2 PTFE P |
| 51 | GN1140A0 | GUARNIZIONE PORTAMOTORE STAMP. ALBERO MOT. D10 XB-X |
| 52 | GN224 | GUARN.PTFE+CARB 100x22x0,8sp-c/fori 1999 |
| 53 | GRL1045A1 | GRIGIA LAT. DX/SX INOX 5TG GN |
| 55 | MG1000A0 | NUOVA MANIGLIA STANDARD |

| | | |
|----|----------|--|
| 56 | MN121A | MANOPOLA CON INDICE NON SERIGRAFATO '04 |
| 57 | PD061A | PIEDINO M10 D=35 H=20 NERO OPACO |
| 58 | PE1010B1 | SCHEDA DI POTENZA LINEA PROFESSIONAL VER. 2003.NET |
| 59 | PE102 | SUPPORTO PER SCHEDA 24POT98 |
| 60 | PE1050B2 | CONTROLLO VERTICALE COMPLETO GASTRONOMIA |
| 61 | RC1000B0 | BOCCOLA INOX SUPP. VETRO STANDAR |
| 62 | RC1035A0 | PERNO FILETTATO SUP.PORTA XB-XV-XG |
| 63 | RC1136A0 | RACC.PORTA GIRANTE CON TUBO 0H1778A0 SALDATO |
| 65 | RC540 | BOCCOLA BRONZO STAFFE SUPP. PORTA XV501 |
| 66 | RS1050A0 | RESISTENZA CIRCOLARE 3000W+2000W 230V INCOLOY 5 GIRI |
| 67 | TB008 | TUBO PE 7,93x4,75 TRASPARENTE |
| 68 | TB1005A0 | TUBO SIL. NERO 27x17 55/65 Sh |
| 69 | VE1135A0 | ATTUATORE VENTURI 220V 50/60 Hz SERIE 2 |
| 70 | TR1000A4 | SONDA AL CUORE MANICO LUSCIO |
| 71 | TR1005A2 | SONDA DI TEMP. CON PASSAPARETE DOPPIA SALD AISI316L |
| 72 | TR255B | TERMOSTATO SIC.+UNIPOL.330°C Ty95H L=1300mm |
| 73 | VE1005A1 | LAMPADA ALOGENA 40W 230V |
| 74 | VE1010A1 | VETRO COPRILAMPADA TEMPERATO ANTISHOCK |
| 75 | VE1015A1 | PORTA LAMPADA SERIE 2 PER LAMPADA ALOGENA |
| 76 | VE1020A0 | MICROINTERRUTTORE PORTA MAGNETICO |
| 77 | VE1030A1 | CALAMITA D=22,9mm PER MICROPORTA |
| 78 | VE1075A0 | PRESSACAVO FV 268 RO |
| 79 | VE1095A0 | TELERUTTORE GE 25A 230V 50/60 Hz CL01A400T6 |
| 80 | VE1100A0 | SCATOLA COPRI MORSETTIERA NYLON XBT/XVT |
| 81 | VE221 | CONDENSICAR PRL 5uf 450V FASTON |
| 82 | VI1030A2 | TAPPO FRESATO PER NUOVO SCARICO |
| 83 | VI1235A0 | RONDELLA PIANA 50x28x4 INOX |
| 84 | VI1245A0 | DADO 3/4" H=10 INOX FISSAGGIO PORTA GIRANTE |
| 85 | VI1515A1 | SUPPORTO Sonda AL CUORE CON CAVA PER FILO INOX |
| 86 | VI524 | RONDELLA 6x24x2 INOX |
| 87 | VM1005A0 | COPRITESTA ROTONDO ABS NERO 40x2 |
| 88 | VM250 | MORSETT.A PETTINE |
| 89 | VN1000B0 | MOTORE COND.5uf 200W ALB.M8 CONN.5 POLI |
| 90 | VN1025A2 | VENTOLA D=196 H=61 38 PALE INOX DADO M8 |
| 91 | VT1015A0 | VETRO INT.654x771x6 TFL XV703G |
| 92 | VT1016A0 | VETRO EST.SER.GRIGIO 620x770x4 BETFL XV703G |

DESCRIPTION

| | | |
|----|-----------|---|
| 1 | OB1045A2 | |
| 2 | OB1050A1 | |
| 3 | OB1055A0 | ENG-COLONNINA LATERALE SX INOX XV703G |
| 4 | OB1060A0 | UPPER/LOWER STAINL.STEEL DOOR LISTEL SERIE XV303/703G |
| 5 | OD1025B0 | STAINLESS STEEL COVER XV303/703G |
| 6 | OD1030C0 | |
| 7 | OD1031C0 | |
| 8 | OD1035B0 | |
| 9 | OD1036B0 | |
| 10 | OE1005C3 | |
| 11 | OF1015C3 | |
| 12 | OG1020B1 | |
| 13 | OG1035B0 | |
| 14 | 2H032 | WASHED METAL HOLDER FOR COOL DOOR |
| 15 | OH1005E0 | |
| 16 | OH1015A1 | |
| 17 | OH1020A0 | UPPER BRACKET TO HOLD THE DOOR |
| 18 | OH1021A0 | LOWER BRACKET TO HOLD THE DOOR |
| 19 | OH1030A2 | BOTTOM LID TO CLOSE CONTROL PANEL |
| 20 | OH1450A0 | STAINLESS STEEL MUFFLE FRONT FACE ANGLE XB-XV-XG-L.M. |
| 21 | OH1050A2 | |
| 23 | OH1065A0 | NEW STANDARD CAVITY SUPPORT |
| 24 | OH1075A0 | STAINLESS STEEL DRAIN PIPE ø30x1.5 SERIE XV |
| 25 | OH2010A0 | MOTOR SUPPORT PROFILE XV303G/703G |
| 26 | OH1105A3 | STAINLESS STEEL SAFE-DROP PROFILE XV303G/703G |
| 27 | OH1140A2 | DOOR COUNTERSTIRRUP XB-XG-XV |
| 28 | OH1500A0 | EXTERNAL HUMIDITY TUBE NEW LINE STAND |
| 31 | OM1005A2 | DRIP TRAY XV303/XV703G |
| 32 | 2H070 | WASHED PROFILE TO HOLD HUMIDITY TUBE |
| 33 | 2H072 | DOUBLE BRACKET TO FIX WATER PIPE XV401/501/XG410 |
| 34 | CE1000C0 | CONNECTION CABLE POWER - CONTROL CARD 4 WIRES VERS. 20 |
| 35 | CE1005B0 | CONNECTION CABLE CONTROL-CONNETT.DB9F RS 232 VERS. 20 |
| 36 | CE212 | TERMINAL BOARD 5FK/7FTW GV V0 00160593 |
| 37 | CR045 | RIGHT STAINLESS STEEL HINGE XV-XL-XB |
| 38 | CR046 | LEFT STAINLESS STEEL HINGE XV-XL-XB |
| 39 | ED1070A0 | UNOX ELLIPTICAL STICKER 78x33-SILVER WITH EXTERNAL FRAME |
| 40 | EL1055A0 | J.G. REDUCTION FROM D=10 TO D=8 PM201008E |
| 41 | EL1125A0 | WALL PASSING SEAL Ø8 |
| 42 | EL1160A0 | WATER DOUBLE ELECTROVALVE + J.G. CONN. INCL. W/ RED CAL. |
| 43 | GN006A | COLD DOOR SEAL PTFE CAR/CARB Thickness=1mm |
| 44 | GN100 | DOOR BLACK SEAL P346 XT |
| 45 | GN1000B0 | BLACK DOOR SEAL 50 SHORE OVENS XB-XG-XV |
| 46 | GN1010A0 | SEAL PTFE+CARB NEW DRAIN ø42x28,5x2 |
| 47 | GN102 | BLACK SILICON DOOR PROFILE C121 XT |
| 48 | GN1045A0 | ANTIVIBR.SEAL FOR EXHAUST CHIMNEY ø131-øe39,9-Sp=7,5 |
| 49 | GN1055A0 | OR 46x2 VMQ 70 RED |
| 50 | GN1065A1 | SEAL FOR LAMP GLASS COVER (PURE PTFE) DE=53.2 DI=44.2 TH= |
| 51 | GN1140A0 | MOTOR GASKET |
| 52 | GN224 | PTFE+CARB 100x22x0,8sp-w/holes 1999 GASKET |
| 53 | GRL1045A1 | RIGHT/LEFT LATERAL GRID STAINLESS STEEL 5 TRAYS GN 1/1 |
| 55 | MG1000A0 | NEW STANDARD HANDLE |

| | | |
|----|----------|---|
| 56 | MN121A | KNOB WITH NON SERIGRAPHED INDEX '04 |
| 57 | PD061A | SMALL FOOT M10 D=35 H=20 BLACK OPAQUE |
| 58 | PE1010B1 | PROFESSIONAL POWER CARD VER. 2003.NET |
| 59 | PE102 | SUPPORT FOR CARD 24POT98 |
| 60 | PE1050B2 | COMPLETE VERTICAL CONTROL GASTRONOMY |
| 61 | RC1000B0 | STAINLESS STEEL UPPER BUSHING FOR GLASS |
| 62 | RC1035A0 | THREADED DOOR TOP XB-XV-XG |
| 63 | RC1136A0 | ROTOR SUPPORT CONNECTION WITH WELDED TUBE 0H1778A0 |
| 65 | RC540 | BRONZE BUSHING FOR STIRRUP TO HOLD DOOR XV501 |
| 66 | RS1050A0 | CIRC.HEAT.ELEMENT 3000W+2000W 230 V INCOLOY 5 RODS |
| 67 | TB008 | TRANSPARENT TUBE PE 7,93x4,75 |
| 68 | TB1005A0 | BLACK SILICONE PIPE 27x17 55/65 Sh |
| 69 | VE1135A0 | VENTURI ACTUATOR 220 V 50/60 Hz SERIES 2 |
| 70 | TR1000A4 | |
| 71 | TR1005A2 | TEMPERATE PROBE WITH WALL PASSING NUT-DOUBLE WELDING |
| 72 | TR255B | SAFETY THERMOSTAT+UNIPOL. 330°C Ty95H L=1300mm |
| 73 | VE1005A1 | HALOGEN LAMP 40W |
| 74 | VE1010A1 | TEMPERED LIGHT BULB GLASS COVER |
| 75 | VE1015A1 | LAMP HOLDER SERIE 2 FOR HALOGEN LAMP |
| 76 | VE1020A0 | MAGNETIC DOOR MICROSWITCH |
| 77 | VE1030A1 | MAGNET FOR DOOR MICROSWITCH D=22,9mm |
| 78 | VE1075A0 | CABLE PRESS FV 268 RO |
| 79 | VE1095A0 | REMOTE CONTROL SWITCH GE 25A 230V 50/60 Hz CL01A400T6 |
| 80 | VE1100A0 | TERMINAL BOARD BLACK NYLON COVER XBT/XVT |
| 81 | VE221 | ICAR CONDENSER PRL 5uf 450V FASTON |
| 82 | VI1030A2 | MILLED LID FOR NEW DRAIN PIPE |
| 83 | VI1235A0 | STAINLESS STEEL FLAT WASHER 50x28x4 |
| 84 | VI1245A0 | STAINLESS STEEL 3/4" H=10 NUT TO FIX ROTATING ARM |
| 85 | VI1515A1 | STAINLESS STEEL CORE PROBE SUPPORT WITH CANAL FOR CABLE |
| 86 | VI524 | STAINLESS STEEL WASHER 6x24x2 |
| 87 | VM1005A0 | ROUND HEAD COVER BLACK ABS 40x2 |
| 88 | VM250 | "COMB" TERMINAL BOARD |
| 89 | VN1000B0 | MOTOR COND.5uf 200W ALB.M8 CONN.5 TERMINALS |
| 90 | VN1025A2 | FAN D=196 H=61 38 BLADES STAINLESS STEEL NUT M8 |
| 91 | VT1015A0 | INTERNAL GLASS 645x771x6 TFL XV703G |
| 92 | VT1016A0 | EXTERNAL GREY SER.GLASS 620x770x4 BETFL XV703G |