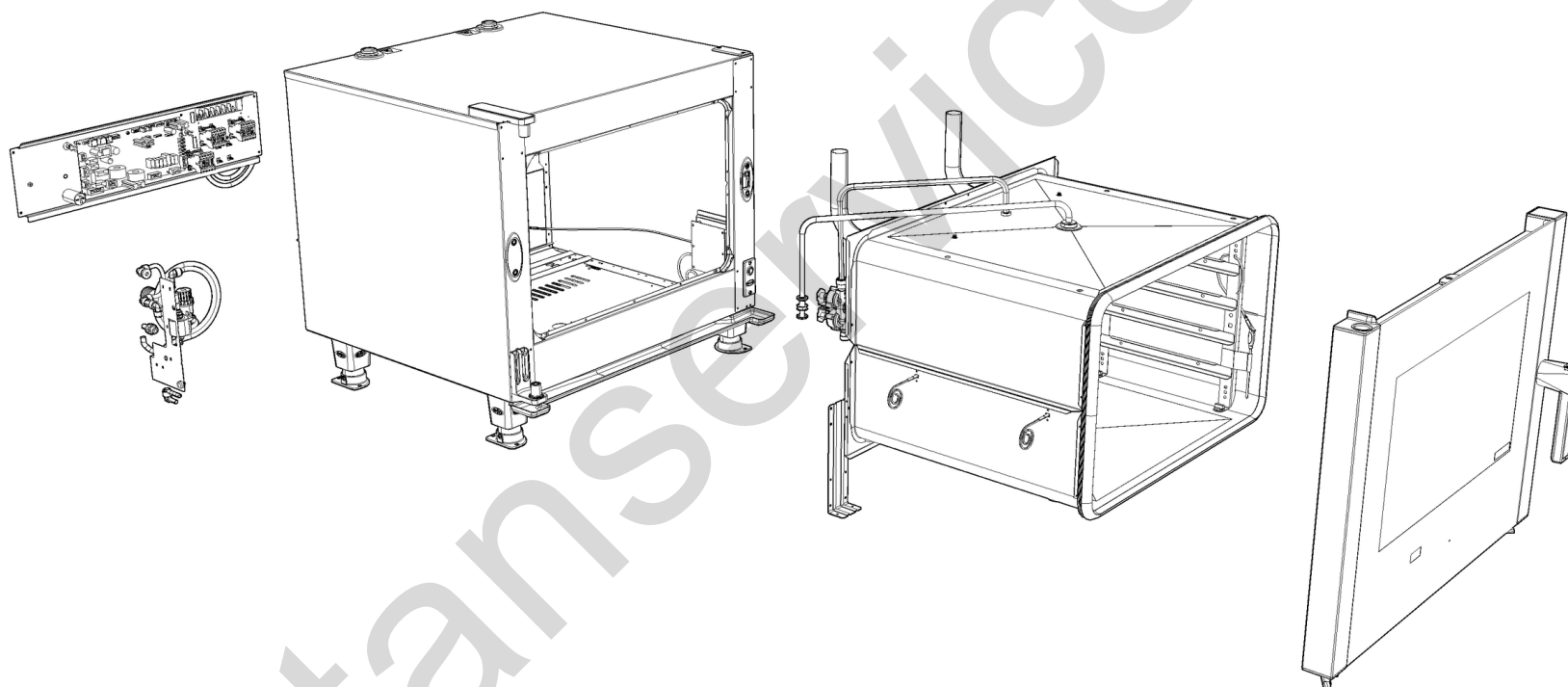
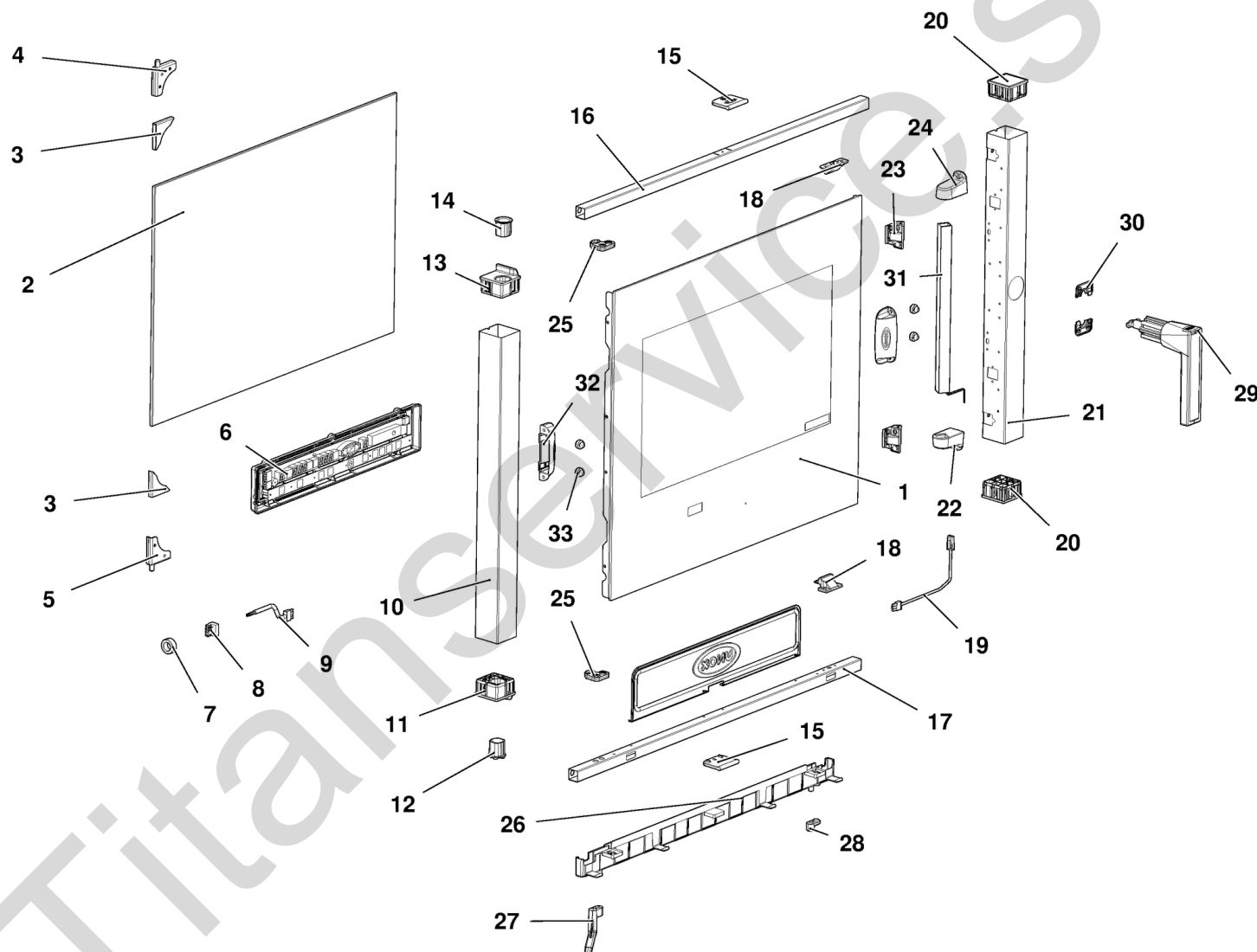


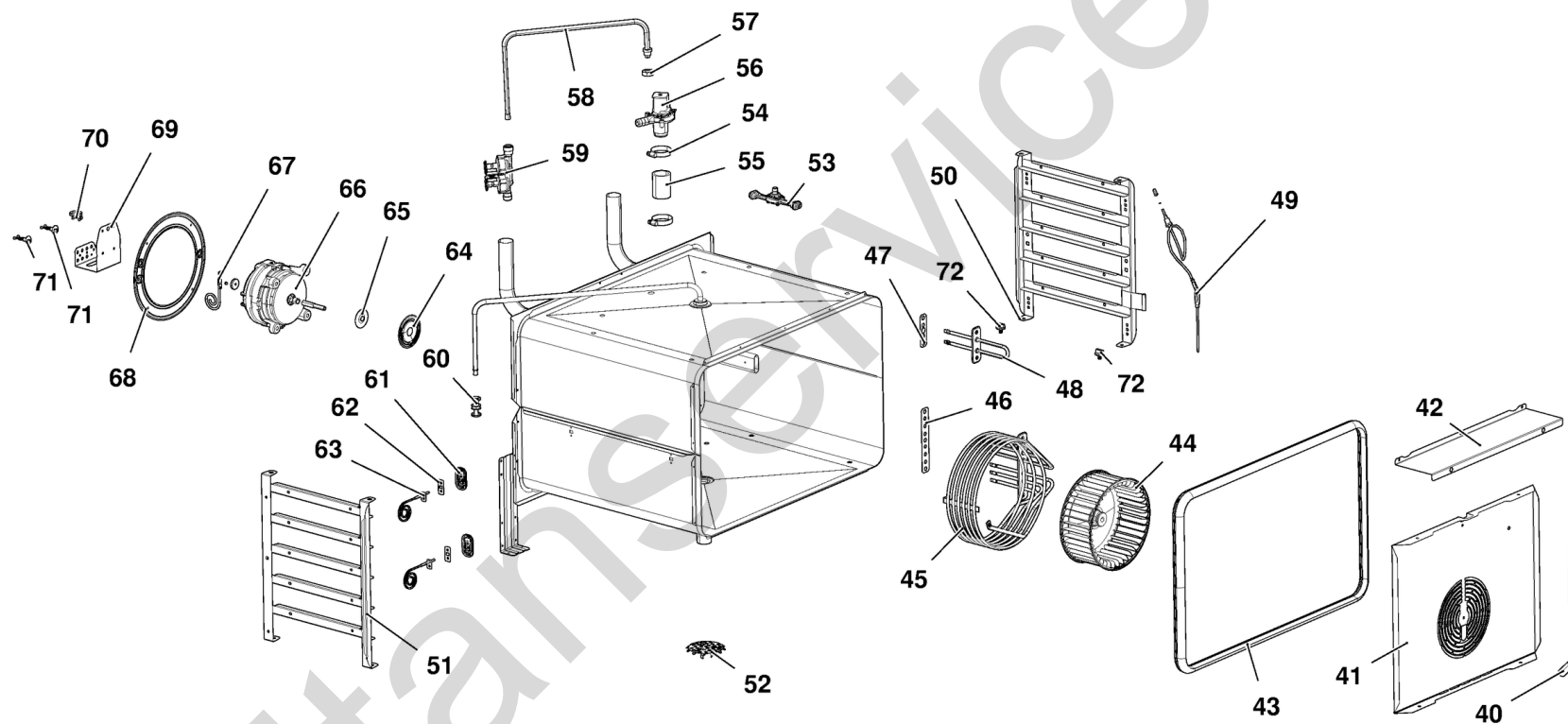
MOD:XVC305E

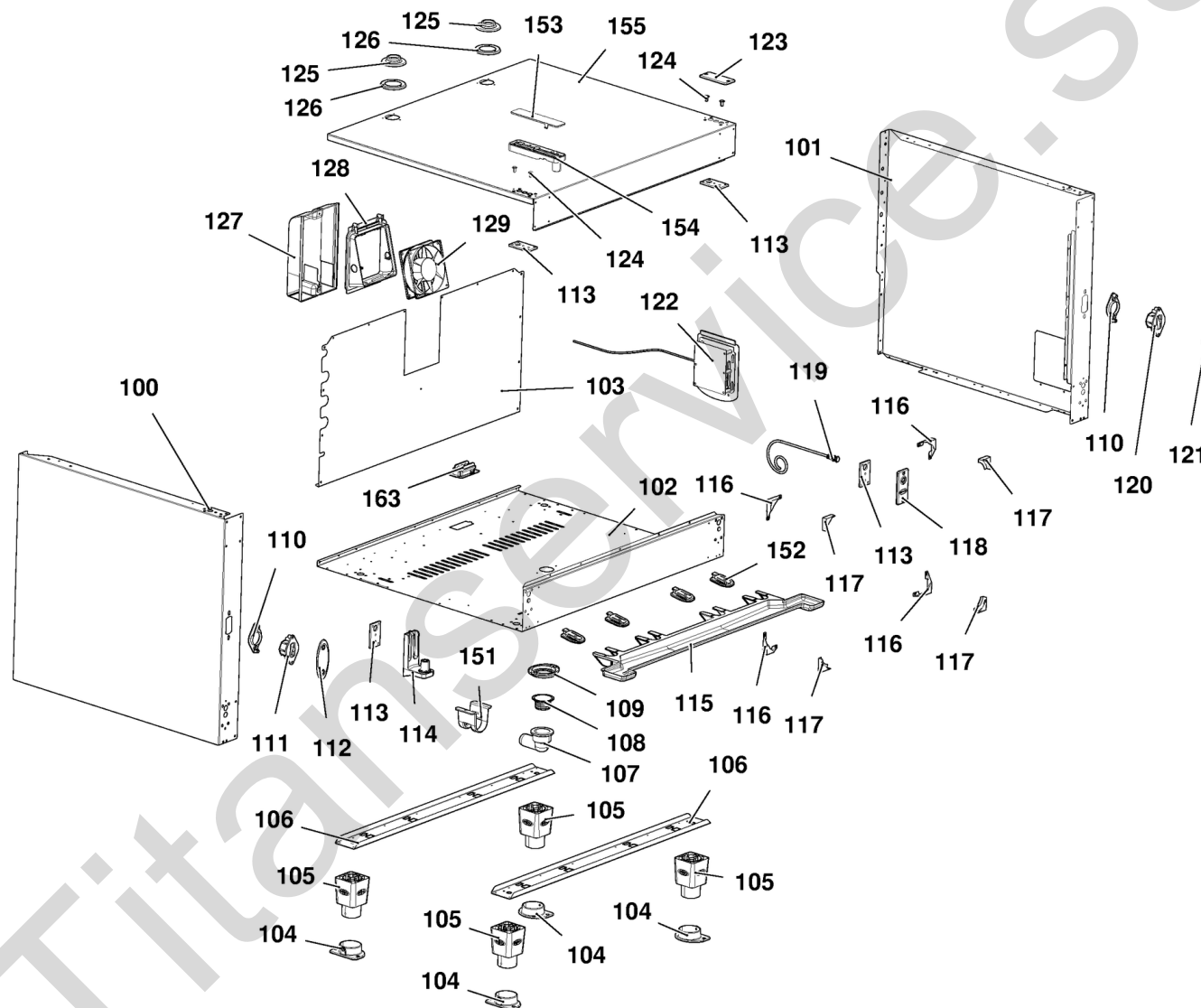


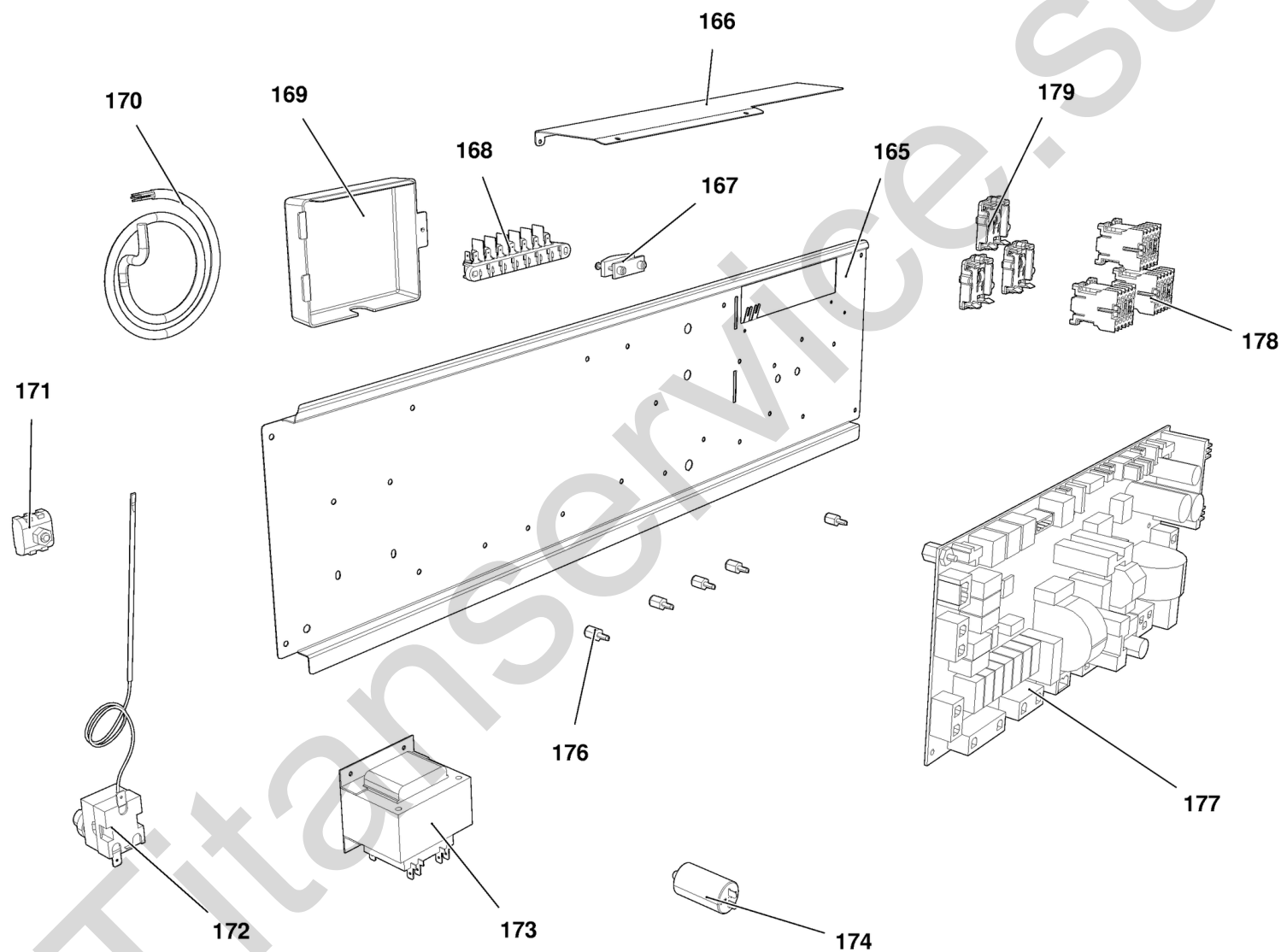
MOD:XVC305E

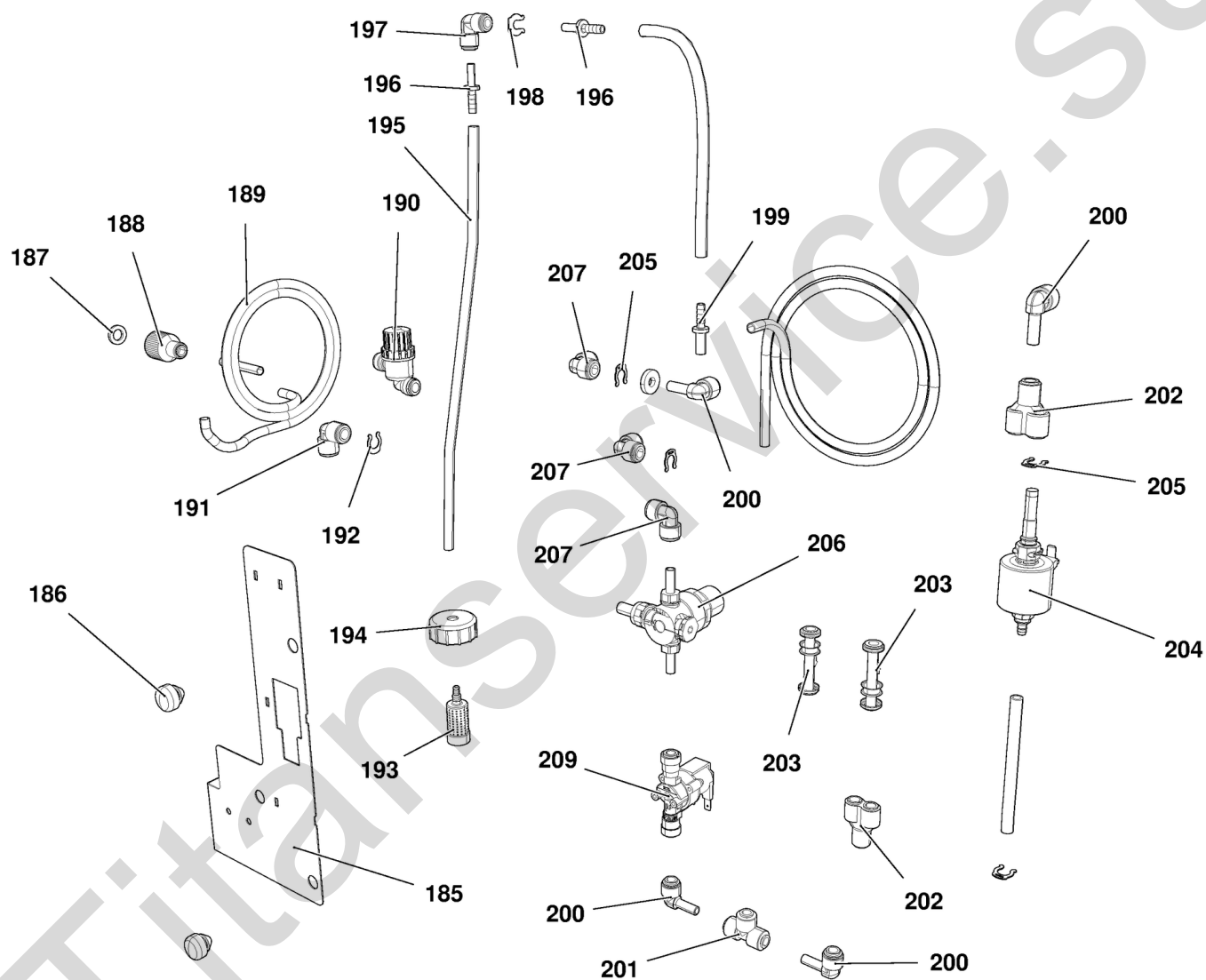


MOD:XVC305E









MOD:XVC305E



IT

Descrizione codici

| | | | | | | | | | | | | | | |
|----|---------|-----------------------------------|----|----------|-----------------------------------|-----|---------|-----------------------------------|-----|---------|-----------------------------------|-----|---------|-----------------------------------|
| 1 | VT1096B | VETRO ESTERNO SER. 647X555X4 CTFL | 32 | VM1591A | STAFFA SPINGIVETRO INTERNO XVC100 | 69 | OH4851A | STAFFA SUPPORTO CABLAGGI STD | 127 | VM1556A | PROTEZIONE VENTOLA RAFFREDDAMENTO | 193 | VL1044B | FILTRO RETINATO CON AFFONDANTE |
| 2 | VT1095A | VETRO INTERNO 633X432X6 BETFL XVC | 33 | VM1630A | TAPPO PREMI VETRO INTERNO | 70 | RC1310A | FASCETTA RICHCO 140X4 CON CLIP | 128 | VM1555A | SUPPORTO VENTOLA RAFFREDDAMENTO C | 194 | VL1041B | TAPPO DETERGENTE FORATO Ø11 |
| 3 | GN1181A | GUARNIZIONE CERN VETRO INT CR1085 | 40 | TB2320A | TUBO UMIDITA' XVC305E/705E Ø16x1 | 71 | VM1610A | CLIP TWIST LOCK DIAM. 7,6-10,2 MM | 129 | VN1163A | VENTOLA RAFFREDDAMENTO 230V | 195 | TB2242B | TUBO PVC 9X6 |
| 4 | CR1085A | CERNIERA VETRO INT INOX SUP | 41 | OG1490A | CARTER ARIA XVC305E | 72 | VM1820A | NOTTOLINO M6 CROMATO FISS. SUPPOR | 151 | VM2035A | SUPPORTO PER TUBO DI SCARICO | 196 | VL1046A | PORTAGOMMA D6-CODOLO D6 |
| 5 | CR1086A | CERNIERA VETRO INT INOX INF | 42 | OG1493A | DISTANZIALE CARTER XVC305E/705E | 100 | OD2176A | FIANCO SX XVC305E | 152 | VM2074A | CLIP CON VITE PER SUPPORTO CASSET | 197 | RC1373A | RACCORDO GOMITO Ø6F-Ø6F |
| 6 | PE1740A | SCHEDA CONTROLLO PE1705 CT BT | 43 | GN1389C | GN1006A-GUARNIZIONE PORTA XVC305E | 101 | OD2177A | FIANCO DX XVC305E | 153 | VM1166A | COPERCHIO STAFFA SUPERIORE PORTA | 198 | EL1348A | CLIP BLOCCA PINZETTA RACCORDI D6 |
| 7 | CE1285A | FERRITE EMI ROUND MOD. 2643801502 | 44 | VN1030A | VENTOLA D196 H81 39 PALE DADO M8 | 102 | OE1318A | FONDO ESTERNO XVC305E/505E/705E | 154 | VM1165B | STAFFA SUPERIORE PORTA CT BT | 199 | VL1047A | PORTAGOMMA D6-CODOLO D8 |
| 8 | CE1290A | MORSETTO FEMMINA ESTRAIBILE CPF 5 | 45 | RS1205A | RES. CIRCOLARE 5600W 230V D230 6 | 103 | OF1450A | SCHIENA XVC305E | 155 | OD2175A | COPERCHIO XVC305E/505E/705E | 200 | EL1195B | RACCORDO GOMITO D8F-D8M |
| 9 | CE1275A | CAVO COLLEGAMENTO POTENZA CONTROL | 46 | GN1085A | GUARNIZIONE RESISTENZA 141x24 G6. | 104 | PD1063A | STAFFA BLOCCAGGIO PIEDE CT BT | 163 | VM2061A | PASSAPARETE CAVI ACCESSORI COMPLE | 201 | EL1020A | RACCORDO INTERMEDIO "I" TUBO Ø8 |
| 10 | TB1186A | COLONNINA SX XVC305 XBC405 50x50x | 47 | GN1326A | GUARNIZIONE RESISTENZA 71x19 G6.2 | 105 | PD1066B | PIEDE H100 PLASTICA BICOMPONENTE | 165 | OH7047A | PROFILO PORTA COMP XVC305E/505E-E | 202 | EL1115B | RACCORDO Y D8 |
| 11 | VM1171B | TAPPO FULCRO INF. PORTA XVC204/30 | 48 | RS1215A | RES. PIANA 147W 105V D230 1 SPIRA | 106 | OH1019A | LAMIERA RINFORZO PIEDI H100 CT | 166 | OH7078A | PROFILO PROTEZIONE SCHEDA POTENZA | 203 | EL1180A | RACCORDO NON RITORNO Ø8 Ø8 FEMMIN |
| 12 | VM1510A | BOCCOLA SCANALATA PERNO PORTA XBC | 49 | TR1040A | SONDA AL CUORE STAMPATA L=1320 | 107 | VL1026A | CURVA PER TUBO DI SCARICO | 167 | VE1075A | PRESSACAVO FV 268 RO+VITI FISSAGG | 204 | VL1038A | POMPA VIBRAZIONE |
| 13 | VM1170B | TAPPO FULCRO SUP. PORTA XVC204/30 | 50 | GRL1220A | SUPPORTO LAT. DX 5 GN1/1 XVC305/3 | 108 | GN1400A | GUARNIZIONE SIFONE | 168 | MR1004A | MORSETT. 7FTW GV VO VL CU 1+2+3/4 | 205 | EL1345A | CLIP BLOCCA PINZETTA RACCORDI Ø8 |
| 14 | VM1511A | BOCCOLA LISCIA PERNO PORTA CHEFFT | 51 | GRL1221A | SUPPORTO LAT. SX 5 GN1/1 XVC305/3 | 109 | VM2039A | ANELLO FISSAGGIO CURVA DI SCARICO | 169 | VM1310A | SCATOLA COPRI MORSETTIERA XB/XV/X | 206 | VL1014A | RIDUTTORE DI PRESSIONE CON DISTRI |
| 15 | VM2031A | PREMIVETRO ESTERNO | 52 | OH2551A | TAPPO PER TUBO DI SCARICO LIQUIDI | 110 | VM1192A | COPERCHIO SCROCCO MANIGLIA CT BT | 170 | CE1355A | CAVO 5X2,5MMQ H07RN-F L=1,5MT | 207 | EL1185B | RACCORDO GOMITO D8F-D8F |
| 16 | TB2325A | LISTELLO SUP. XVC305E/505E/705E 2 | 53 | VM1955B | CORPO GIRANTE LAVAGGIO | 111 | VM1191A | SCROCCO MANIGLIA SX CT BT | 171 | VM1750A | MORSETTIERA A PETTINE | 208 | TB2235A | ROCCETTO DETERGENTE TUBO Ø8 |
| 17 | TB2326A | LISTELLO INF. XVC305E/505E/705E 2 | 54 | RC1378A | FASCETTA STRINGI TUBO ZINCATA | 112 | VM1461A | COPERCHIO SX SCROCCO PORTA XBC/XV | 172 | TR1136A | TERMOSTATO SIC. UNIP. 330°C | 209 | EL1411A | ELETTROVALVOLA H2O CON CHECK VALV |
| 18 | VM2043A | SUPPORTO VETRO SUP - INF | 55 | TB1956A | TB1520A-TUBO NERO EPDM L=50 | 113 | OH2560A | CONTROSTAFFA ZINCATA PORTA C.T. | 173 | VE1026A | TRASFORMATORE 230-21-12Vac 90VA | | | |
| 19 | CE1665A | CAVO ALIMENTAZIONE BARRA LED 1 MT | 56 | VE1135A | ATTUATORE VENTURI 220V 50/60 Hz S | 114 | VM1160B | STAFFA INFERIORE PORTA CT BT | 174 | CN1003A | CONDENSATORE CORAZZATO 6,3 uF | | | |
| 20 | VM1175A | TAPPO ESTETICO COLONNINA PORTA | 57 | RC1170A | DADO M14 H=8 CH=22 INOX | 115 | VM1991A | CASSETTO RACCOGLI GOCCE 750 | 176 | VM1745A | SUPPORTO PER SCHEDA | | | |
| 21 | TB2314A | COLONNINA DX XVC305E-XBC405E 50x5 | 58 | TB1515A | TUBO EST. UMIDITA' + RC1165A0 | 116 | OH1450A | ANGOLO FACCIATA MUFFOLA INOX XB-X | 177 | PE1725E | SCHEDA POTENZA FORNI CT-BT 55.E | | | |
| 22 | VM1620A | SUPPORTO INF BARRA LED | 59 | EL1361A | ELETTROVALVOLA TRI-STADIO JG D8-D | 117 | VM1008A | ANGOLARE INT. SUPPORTO GUARNIZION | 178 | VE1115A | MINICONTATTORE QUADRIPOLEARE 20 A | | | |
| 23 | VM2042A | ASSIEME CHIUSURA VETRO INTERNO LA | 60 | EL1055A | RIDUZIONE INTERMEDIA D10-D8 | 118 | VM1201A | PIASTRINA SUPPORTO MICROPORTA MAG | 179 | VM1056A | STAFFA TELERUTTORE PICCOLO VE1115 | | | |
| 24 | VM1621A | SUPPORTO SUP BARRA LED | 61 | VM1465A | COPERCHIO Sonda TEMPERATURA CHEFT | 119 | VE1020A | MICROINTERRUTTORE PORTA MAGNETICO | 185 | OH6413A | SUPPORTO IMPIANTO IDRICO | | | |
| 25 | VM1680A | CERNIERA APERTURA VETRO INTERNO | 62 | GN1285A | GUARNIZIONE Sonda DI TEMPERATURA | 120 | VM1190A | SCROCCO MANIGLIA DX CT BT | 186 | VM1630A | TAPPO PREMI VETRO INTERNO | | | |
| 26 | VM1616A | PROFILO SALVAGOCIA 300/500/700 | 63 | TR1105A | SONDA TEMPERATURA PT100 L1000 | 121 | VM1460A | COPERCHIO DX SCROCCO PORTA XBC/XV | 187 | GN1200A | GUARNIZIONE D=24 RACCORDO 3/4 GOM | | | |
| 27 | VM2014A | TUBO PER PROFILO RACCOGLI GOCCE S | 64 | OH4305A | DISCO TENUTA ALBERO MOTORE INOX S | 122 | PE1971B | ASM SCHEDA UNOX.LINK MODBUS RJ45+ | 188 | RC1365A | RACCORDO JG FEMMINA 3/4"-10 | | | |
| 28 | VM2044A | TAPPO PER PROFILO RACCOGLI GOCCE | 65 | GN1140A | GUARNIZIONE PORTAMOTORE STAMP. | 123 | VM1195A | PIASTRINA COPRIFORI XVC204/304/50 | 189 | TB2237A | TUBO Ø10 ALLACCIAMENTO RETE | | | |
| 29 | VM1180B | IMPUGNATURA MANIGLIA CT BT | 66 | VN1130A | MOTORE FORNO 330W 230V 50/60HZ | 124 | VM1240A | TAPPO NYLON SUPPORTO CONTROSTAFFA | 190 | VL1034A | FILTRO ACQUA Ø10 MESH100 | | | |
| 30 | VM1490A | COPRI VITI MANIGLIA CHEFTOP BAKER | 67 | PE1710A | SENSORE NUMERO GIRI MOTORE | 125 | GN1275A | GUARNIZIONE CAMINO SILICONE NERO | 191 | RC1360A | RACCORDO GOMITO JG 10-10 | | | |
| 31 | LP1001B | BARRA ILLUMINAZIONE LED L300 | 68 | OH3586A | LAMIERA PROTEZIONE MOTORE ZINCATO | 126 | OH3790A | LAMIERA TENUTA CAMINO | 192 | EL1349A | CLIP BLOCCA PINZETTA RACCORDI D10 | | | |

MOD:XVC305E



EN

Codes descriptions

| | | | | | | | | | | | | | | |
|----|---------|-----------------------------------|----|----------|-----------------------------------|-----|---------|-----------------------------------|-----|---------|------------------------------------|-----|---------|-----------------------------------|
| 1 | VT1096B | XVC305 EXTERNAL GLASS 647X55X4 | 32 | VM1591A | GLASS BRACKET INT. XVC1004 | 69 | OH4851A | BRACKET SUPPORT WIRING HARNESS ST | 127 | VM1556A | XBC-XVC COOLING FAN GUARD | 193 | VL1044B | HOLD DOWN WEIGHT WITH NET FILTER |
| 2 | VT1095A | INNER GLASS 633X432X6 BETFL XVC30 | 33 | VM1630A | INTERNAL GLASS PUSHING CAP | 70 | RC1310A | 140x4 CLAMP WITH CLIP | 128 | VM1555A | CT BT COOLING DOWN FAN SUPPORT | 194 | VL1041B | DETERGENT CAP WITH Ø11 HOLE |
| 3 | GN1181A | INTERNAL GLASS HINGE SEAL | 40 | TB2320A | XVC305E/705E INTERNAL WATER PIPE | 71 | VM1610A | CLIP TWIST LOCK DIAM. 7,6-10,2 MM | 129 | VN1163A | COOLING FAN 230V | 195 | TB2242B | WASHING SYSTEM PIPE 9x6 |
| 4 | CR1085A | INTERNAL GLASS UPPER HINGE | 41 | OG1490A | XVC305E FAN GUARD | 72 | VM1820A | LATERAL SUPPORTS M6 FIXING BOLTS | 151 | VM2035A | DRAIN PIPE SUPPORT | 196 | VL1046A | D6 PIPE HOLDER - D6 J.G. TERMINAL |
| 5 | CR1086A | INTERNAL GLASS LOWER HINGE | 42 | OG1493A | XVC305E/705E FAN GUARD SPACER | 100 | OD2176A | XVC305E EXTERNAL LEFT SIDE | 152 | VM2074A | C.T. DRIP TRAY FIXING CLIP WITH S | 197 | RC1373A | Ø6F-Ø6F ELBOW FITTING |
| 6 | PE1740A | CT BT CONTROL BOARD PE1705 + BOAR | 43 | GN1389C | GN1006A - XVC305E DOOR SEAL | 101 | OD2177A | XVC305E RIGHT SIDE | 153 | VM1166A | CAP FOR DOOR UPPER STIRRUP XVC204 | 198 | EL1348A | CLIP TO FIX Ø06 mm CONNECTION JOI |
| 7 | CE1285A | EMI ROUND FERRITE MOD.2643801502 | 44 | VN1030A | MOTOR FAN D196 H81 39 BLADE NUT M | 102 | OE1318A | XVC305E/505E/705E EXTERNAL BOTTOM | 154 | VM1165B | CT BT DOOR UPPER BRACKET | 199 | VL1047A | D6 PIPE HOLDER - D8 J.G. TERMINAL |
| 8 | CE1290A | EXTRACTABLE FEMALE TERMINAL CPF 5 | 45 | RS1205A | 5600W 230V D230 6 TURNS HEATING E | 103 | OF1450A | XVC305E EXTERNAL BACK PANEL | 155 | OD2175A | XVC305E/505E/705E EXTERNAL COVER | 200 | EL1195B | D8F-D8M ELBOW CONNECTION |
| 9 | CE1275A | CONNECTION CABLE POWER - CONTROL | 46 | GN1085A | HEATING ELEMENT GASKET 141x24 G6. | 104 | PD1063A | CT BT FOOT STOP BRACKET | 163 | VM2061A | ACCESSORIES CABLES WALL PASSING | 201 | EL1020A | INTERMEDIATE "T" CONNECTION ø8 |
| 10 | TB1186A | XVC305 XBC405 ST. ST. LEFT DOOR C | 47 | GN1326A | ELEMENT SEALING 70X22X0.8 | 105 | PD1066B | BI-COMPONENT FOOT H100 | 165 | OH7047A | XVC305E/505E-EP/705E COMPONENTS H | 202 | EL1115B | Y D8 CONNECTION |
| 11 | VM1171B | DOOR LOWER FULCRUM CAP | 48 | RS1215A | 147W 105V D230 1 TURN FLAT ELEMEN | 106 | OH1019A | BRACKET FOR CHEFTOP H100 FEET | 166 | OH7078A | POWER CARD PROTECTING PROFILE H70 | 203 | EL1180A | Ø8 Ø8 FEMALE NON-RETURN CONNECTIO |
| 12 | VM1510A | XBC/XVC GROOVED DOOR PIN BUSHING | 49 | TR1040A | MOLDED CORE PROBE L=1320 | 107 | VL1026A | BEND FOR DRAIN PIPE | 167 | VE1075A | WIRE CLAMP FV 268 RO + FIXING SCR | 204 | VL1038A | VIBRATION PUMP |
| 13 | VM1170B | UPPER DOOR FULCRUM CAP | 50 | GRL1220A | 5 GN1/1 ST. STEEL RIGHT LATERAL S | 108 | GN1400A | U-TRAP SEAL | 168 | MR1004A | TERMINAL 7FTW GV V0 VL CU 1+2+3/4 | 205 | EL1345A | CLIP TO FIX Ø08 mm CONNECTION JOI |
| 14 | VM1511A | XBC/XVC SLEEK DOOR PIN BUSHING | 51 | GRL1221A | 5 GN1/1 ST. STEEL LEFT LATERAL SU | 109 | VM2039A | DRAIN BEND FIXING RING | 169 | VM1310A | COVER FOR TERMINAL BOX XB/XV/XVC/ | 206 | VL1014A | PRESSURE REDUCER WITH DISTRIBUTOR |
| 15 | VM2031A | EXTERNAL GLASS PUSHING PLATE | 52 | OH2551A | XBC/XVC ST.STEEL DRAIN COVER | 110 | VM1192A | CT BT DOOR SPRING LATCH COVER | 170 | CE1355A | CABLE 5 X 2,5 MMQ H07RNF L = 1,5 | 207 | EL1185B | D8F-D8F ELBOW FITTING |
| 16 | TB2325A | XVC305E/505E/705E UPPER LISTEL 20 | 53 | VM1955B | WASHIG SYSTEM ROTOR | 111 | VM1191A | CT BT LEFT DOOR SPRING LATCH | 171 | VM1750A | TERMINAL BOARD | 208 | TB2235A | Ø8 DETERGENT PIPE COIL |
| 17 | TB2326A | XVC305E/505E/705E LOWER LISTEL 20 | 54 | RC1378A | HOSE CLAMP | 112 | VM1461A | XBC/XVC LEFT DOOR LATCH CAP | 172 | TR1136A | SAFETY THERMOSTAT UNIP. 330°C | 209 | EL1411A | SOLENOID VALVE WITH CHECK VALVE |
| 18 | VM2043A | UPPER - LOWER GLASS SUPPORT | 55 | TB1956A | TB1520A - EPDM BLACK PIPE L=50 | 113 | OH2560A | XBC/XVC ZINC PLAT. DOOR COUNTERBR | 173 | VE1026A | TRANSFORMER 230-21-12Vac 80VA | | | |
| 19 | CE1665A | LED POWER SUPPLY 1 M CABLE | 56 | VE1135A | VENTURI ACTUATOR 220 V 50/60 Hz S | 114 | VM1160B | CT BT DOOR LOWER BRACKET | 174 | CN1003A | CONDENSER6,3 Uf | | | |
| 20 | VM1175A | DOOR COLUMN BLANKING CAP | 57 | RC1170A | STAINLESS STEEL NUT M14 H=8 CH=22 | 115 | VM1991A | CHEFTOP E SERIES DRIP TRAY | 176 | VM1745A | BOARD SUPPORT | | | |
| 21 | TB2314A | XVC305E-XBC405E 50x50x1.2 RIGHT C | 58 | TB1515A | EXTERNAL WATER PIPE + RC1165A0 | 116 | OH1450A | XB-XV-XG ST. STEEL MUFFLE FRONT C | 177 | PE1725E | E SERIES CHEFTOP-BAKERTOP POWER C | | | |
| 22 | VM1620A | LED BAR LOWER SUPPORT | 59 | EL1361A | J.G. THREE-STAGE SOLENOID VALVE D | 117 | VM1008A | GASKET SUPPORT INTERNAL CORNER | 178 | VE1115A | MINI CONTACTOR WITH 4 POLES 20 A 2 | | | |
| 23 | VM2042A | INTERNAL GLASS LATERAL LOCKING SY | 60 | EL1055A | INTERMEDIATE REDUCTION FROM D=10 | 118 | VM1201A | MAGNETIC SUPPORT PLATE FOR DOOR M | 179 | VM1056A | SUPPORT MINI CONTACTOR VE1115A | | | |
| 24 | VM1621A | LED BAR UPPER SUPPORT | 61 | VM1465A | CHEFTOP TEMPERATURE PROBE COVER | 119 | VE1020A | MAGNETIC DOOR MICROSWITCH | 185 | OH6413A | WATER SYSTEM SUPPORT | | | |
| 25 | VM1680A | INTERNAL GLASS HINGE | 62 | GN1285A | NTC TEMPERATURE PROBE SEALING | 120 | VM1190A | CT BT RIGHT DOOR SPRING LATCH | 186 | VM1630A | INTERNAL GLASS PUSHING CAP | | | |
| 26 | VM1616A | 300/500/700 E SERIES DRIP PROFILE | 63 | TR1105A | TEMPERATURE PROBE PT100 L1000 | 121 | VM1460A | XBC/XVC RIGHT DOOR LATCH CAP | 187 | GN1200A | 3/4 CONNECTION SEAL D=24 RUBBER+N | | | |
| 27 | VM2014A | LEFT DRIP PROFILE PIPE | 64 | OH4305A | ST. STEEL MOTOR SHAFT SEALING DIS | 122 | PE1971B | UNOX.LINK MODBUS RJ45+USB | 188 | RC1365A | 3/4"-10 JG FEMALE CONNECTION | | | |
| 28 | VM2044A | DRIP PROFILE CAP | 65 | GN1140A | MOLDED MOTOR SUPPORT GASKET | 123 | VM1195A | HOLES BLANKING PLATE XVC204/304/5 | 189 | TB2237A | Ø10 WATER MAIN CONNECTION PIPE | | | |
| 29 | VM1180B | ChefTop/BakerTop HANDLE HAFT | 66 | VN1130A | 330W 230V 50/60HZ MOTOR | 124 | VM1240A | NYLON SUPPORT CAP | 190 | VL1034A | Ø10 MESH100 WATER FILTER | | | |
| 30 | VM1490A | CHEFTOP/BAKERTOP HANDLE SCREWS CO | 67 | PE1710A | MOTOR REVOLUTIONS SENSOR | 125 | GN1275A | XBC/XVC BLACK CHIMNEY SEALING | 191 | RC1360A | 10 - 10 JG ELBOW FITTING | | | |
| 31 | LP1001B | LED LIGHTING BAR L300 | 68 | OH3586A | ZINCATE MOTOR GUARD PLATE XBC-XVC | 126 | OH3790A | CHIMNEY HOLDING PLATE | 192 | EL1349A | CLIP TO FIX Ø10 mm CONNECTION JOI | | | |