

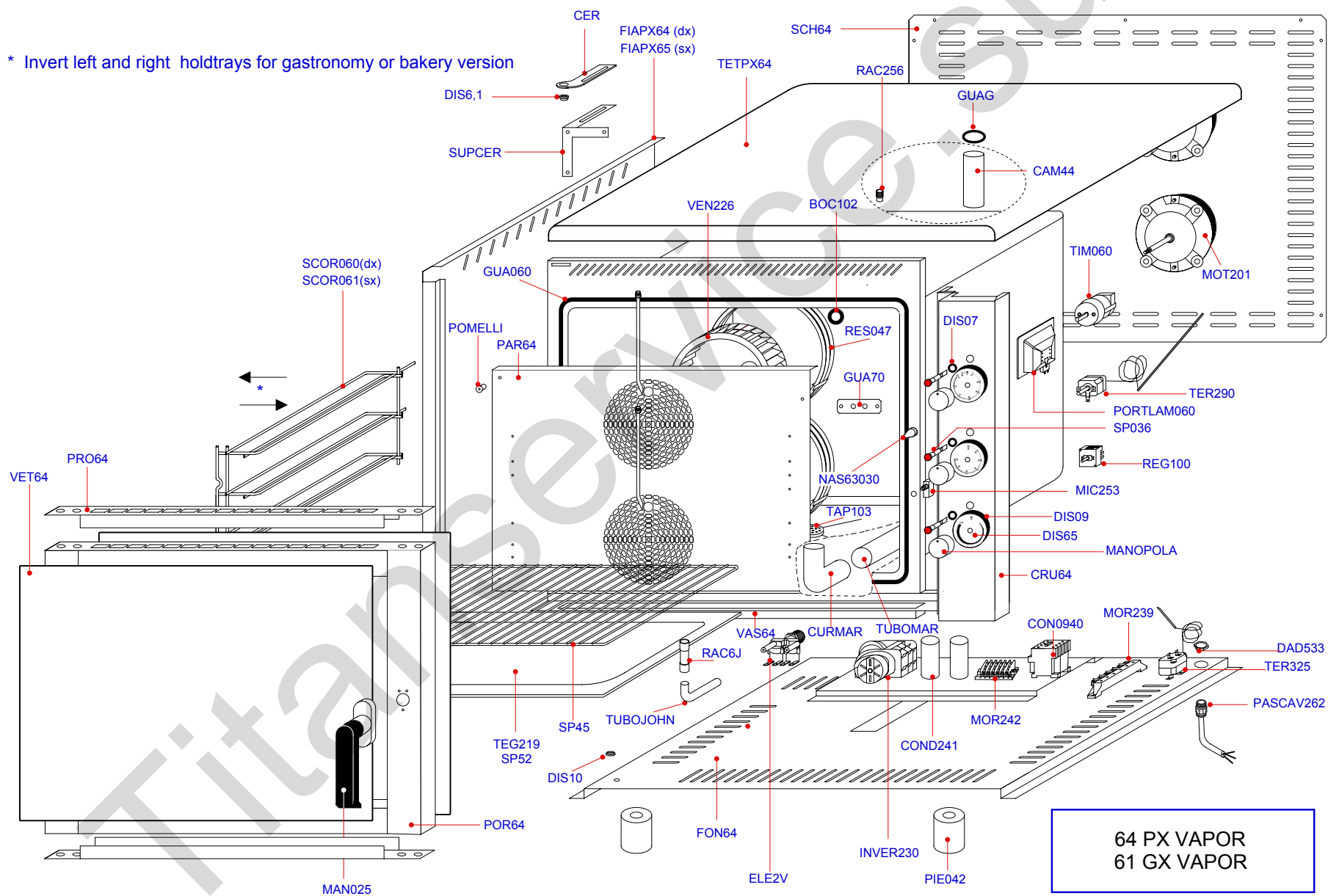
SPARE PARTS PRICE LIST 2006

64 PX VAPOR
61 GX VAPOR



The "Seal of Control" applied on Garbin Ovens
is the proof of the test effected and guarantees the quality of our products

* Invert left and right holdtrays for gastronomy or bakery version



◆ Mod. 64 PX VAPOR ◆ 61 GX VAPOR ◆

Cod.	Descrizione articoli ◆ Description of items ◆ Description articles ◆ Beschreibung Artikel ◆ Descripción artículos
BOC102	GUARNIZIONE TEFLON ◆ TEFLON GASKET ◆ GARNITURE DE TEFLON ◆ TEFLON DICHTUNG ◆ GUARNICION EN TEFLON
CAM44	SFIATO VAPORI ◆ FUMES VENT ◆ FISSURE DES VAPEURS ◆ DUNST LUFTLOCH ◆ CANERIA POR HUMOS
CER	CERNIERA ◆ HINGE ◆ CHARNIÈRE ◆ SCHARNIER ◆ BISAGRA
CON241	CONDENSATORE 2,5 µF ◆ 2,5 µF CAPACITOR ◆ CONDENSATEUR 2,5 µF ◆ KONDENSATOR 2,5 µF ◆ CONDENSADOR 2,5 µF
CON0940	TELERUTTORE ◆ CONTROL SWITCH ◆ TÉLERUPTEUR ◆ SCHÜTZ ◆ TÉLERUPTOR
CRU64	CRUSCOTTO ◆ INSTRUMENT PANEL ◆ BANDEAU DE COMMANDES ◆ BEDIENBLLENDE ◆ PANEL DE MANDOS
CURMAR	CURVA 88 GR ◆ CURVE 88 GR ◆ COURBE 88 GR ◆ KNIE 88 GR ◆ CURVA 88 GR
DAD533	DADO NYLON PG16 ◆ NUT NYLON PG16 ◆ ECROU NYLON PG16 ◆ MUTTER NYLON PG16 ◆ TUERCA NYLON PG16
DIS07	GUARNIZIONE NYLON D 18 ◆ NYLON GASKET D 18 ◆ JOINT NYLON D 18 ◆ NYLONDICHTUNG D 18 ◆ GUARNICIÓN NAILON D18
DIS09	GUARNIZIONE NYLON D 65 ◆ NYLON GASKET D 65 ◆ JOINT NYLON D 65 ◆ NYLONDICHTUNG D 65 ◆ GUARNICIÓN NAILON D 65
DIS10	DISTANZIALE D 10 ◆ SPACER D 10 ◆ ENTRETOISE D 10 ◆ ABSTANDHALTER D 10 ◆ ESPACIADOR D 10
DIS6,1	DISTANZIALE D6,1 ◆ SPACER D 6,1 ◆ ENTRETOISE D 6,1 ◆ ABSTANDHALTER D 6,1 ◆ ESPACIADOR D 6,1
DIS65	DISCHETTO SERIGRAFATO D 65 ◆ SILK SCREEN PRINTED DISC D 65 ◆ DISQUETTE SÉRIGRAPHIÉE D 65 ◆ SERIGRAPHIERTE SCHEIBE D 65 ◆ DISCO SERIGRAFADO D 65
ELE2V	ELETTROVALVOLA 2 VIE ◆ SOLENOID VALVE – 2-WAYS ◆ ELECTROVANNE 2 VOIES ◆ MAGNETVENTIL – 2-WEGE ◆ ELECTROVALVULA 2 VÍAS
FIAPX64	FIANCO DESTRO ◆ RIGHT SIDE ◆ CÔTÉ DROIT ◆ RECHTE SEITE ◆ LATERAL DERECHO
FIAPX65	FIANCO SINISTRO ◆ LEFT SIDE ◆ CÔTÉ GAUCHE ◆ LINCHE SEITE ◆ LATERAL IZQUIERDA
FON64	FONDO LAMIERA ◆ SHEET BOTTOM ◆ FOND EN TÔLE ◆ BODEN BLECH LÜFTERRADSCHUTZGITTER ◆ BASE PLANCHA
GUA060	GUARNIZIONE PORTA INTERNA ◆ INTERNAL DOOR SEAL ◆ JOINT PORTE INTERNE ◆ DICHTUNG INNENTÜR ◆ BURLETE PUERTA
GUA70	GUARNIZIONE ◆ GASKET ◆ JOINT ◆ DICHTUNG ◆ BURLETE
GUAG	GUARNIZIONE CAMINO - GRANDE ◆ CHIMNEY GASKET - BIG ◆ JOINT CHEMINÉE - GRAND ◆ GROSSE SCHORNSTEINDICHTUNG ◆ GUANICIÓN CHIMENEA - GRANDE
INVER230	TEMPORIZZATORE ◆ TIMER ◆ TEMPORISATEUR ◆ ZEITSCHALTUHR ◆ TEMPORIZADOR
MAN025	MANIGLIA ◆ HANDLE ◆ MANETTE ◆ GRIFF ◆ MANECILLA
MANOPOLA	MANOPOLA ◆ KNOB ◆ MANETTE ◆ BEDIENKNOPF ◆ EMPUNADURA
MIC253	MICROINTERRUTTORE PORTA ◆ DOOR MICRO-SWITCH ◆ MINIRUPTEUR PORTE ◆ MIKROSCHALTER TÜR ◆ MICROINTERRUPTOR PUERTA
MOR239	MORSETTIERA ALIMENTAZIONE ◆ SUPPLY TERMINAL BOARD ◆ BORNE ALIMENTATION ◆ VERSORGUNGSKLEMMENLEISTE ◆ BORNERA DE ALIMENTACIÓN
MOR242	MORSETTIERA DI DERIVAZIONE ◆ BRANCH TERMINAL BOARD ◆ BORNE DE DÉRIVATION ◆ ABZWEIGUNGSKLEMMENLEISTE ◆ BORNERA DE DERIVACIÓN
MOT201	MOTORE + CONDENSATORE ◆ MOTOR + CAPACITOR ◆ MOTEUR + CONDENSATEUR ◆ MOTOR + KONDENSATOR ◆ MOTOR + CONDENSADOR
NAS63030	NASELLO ◆ NIB ◆ MENTONNET ◆ NASE ◆ PUNTA
PAR64	PARAVENTOLA ◆ FAN COVER ◆ PROTECTION DU VENTILATEUR ◆ WINDSCHUTZ ◆ PROTECCIÓN VENTILADOR
PASCAV262	PASSACAVO ◆ CABLE GUIDE ◆ PASSE CABLE ◆ KABEL FÜHRUNG ◆ AISCADOR PASAPANEL
PIE042	PIEDINO ◆ FOOT ◆ PIED ◆ FUSS ◆ PIE
POMELLI	POMELLO ◆ KNOB ◆ POMMEAU ◆ KNAUF ◆ TIRADOR
POR64	PORTA ◆ DOOR ◆ PORTE ◆ TÜR ◆ PUERTA
PORTLAM060	PORTALAMPADA ◆ LAMPHOLDER ◆ PORTE-LAMPE ◆ LAMPENFASSUNG ◆ PORTALAMPARAS
PRO64	PROFILO PORTA ◆ DOOR PROFILE ◆ PROFIL PORTE ◆ TÜRRAHMEN ◆ PERFIL PUERTA
RAC256	RACCORDO INTERMEDIO ◆ INTERMEDIATE CONNECTION ◆ RACCORD INTERMÉDIAIRE ◆ INTERMEDIÄRES VEBINDUNGSGLIED ◆ CONEXIÓN INTERMEDIA
RAC6J	RIDUZIONE INTERMEDIA ◆ INTERMEDIATE REDUCTION ◆ REDUCTION INTERMÉDIAIRE ◆ INTERMEDIÄRES UNTERSETZUNGSGETRIEBE ◆ REDUCCIÓN INTERMEDIA
REG100	REGOLATORE DI ENERGIA ◆ ENERGY REGULATOR ◆ RÉGULATEUR D'ÉNERGIE ◆ ENERGIEREGLER ◆ REGULADOR DE ENERGIA
RES047	RESISTENZA 4000W V230 ◆ RESISTOR 4000W V230 ◆ RÉSISTANCE 4000W V230 ◆ WIDERSTAND 4000W V230 ◆ RESISTENCIA 4000W V230
SCH64	SCHIENA ◆ BACK ◆ DOS ◆ RÜCKENTEIL ◆ TRASERA
SCOR060	GRIGLIA LATERALE DESTRA ◆ RIGHT SIDE GRILL ◆ GRILLE LATÉRALE DROITE ◆ RECHTES SEITLICHES GITTER ◆ REJILLA LATERAL DERECHA
SCOR061	GRIGLIA LATERALE SINISTRA ◆ LEFT SIDE GRILL ◆ GRILLE LATÉRALE GAUCHE ◆ LINKES SEITLICHES GITTER ◆ REJILLA LATERAL IZQUIERDA
SP036	SEGNALATORE ROSSO ◆ RED INDICATOR ◆ SIGNALEUR ROUGE ◆ ROTE LEUCHTANZEIGE ◆ INDICADOR ROJO
SP45	GRIGLIA IN ACCIAIO 1/1 GN ◆ STEEL GRILL 1/1 GN ◆ GRILLE EN ACIER 1/1 GN ◆ STAHLGITTERROST 1/1 GN ◆ PARRILLA DE ACERO 1/1 GN
SP52	TEGLIA 1/1 GN H20 ◆ BAKING-PAN 1/1 GN H20 ◆ PLATEAU 1/1 GN H20 ◆ BACKFORM 1/1 GN H20 ◆ BANDEJA 1/1 GN H20
SUPCER	SUPPORTO CERNIERA ◆ HINGE SUPPORT ◆ SUPPORT CHARNIERE ◆ STÜTZE ZUM SCHARNIER ◆ SOPORTE BISAGRA
TAP103	TAPPO ◆ CAP ◆ BOUCHON ◆ VERSCHLUSS ◆ TAPÓN
TEG219	TEGLIA (60X40 H20) ◆ TRAY (60X40 H20) ◆ BAC (60X40 H20) ◆ BACKFORM (60X40 H20) ◆ BANDEJA (60X40 H20)
TER290	TERMOSTATO ◆ THERMOSTAT ◆ THERMOSTAT ◆ THERMOSTAT ◆ TERMOSTATO
TER325	TERMOSTATO SICUREZZA ◆ SAFETY THERMOSTAT ◆ THERMOSTAT DE SÉCURITÉ ◆ SICHERHEITSTHERMOSTAT ◆ TERMOSTATO DE SEGURIDAD
TETPX64	COPERCHIO ◆ COVER ◆ COUVERCLE ◆ DECKEL ◆ TAPA
TIM060	TEMPORIZZATORE 60' ◆ TIMER 60' ◆ TEMPORISATEUR 60' ◆ ZEITSCHALTUHR 60' ◆ TEMPORIZADOR 60'
TUBOJOHN	TUBO TRASPARENTE ◆ TRANSPARENT TUBE ◆ TUBE TRASPARENT ◆ DURCHSICHTIGES ROHR ◆ TUBO TRASPARENTE
TUBOMAR	TUBO ◆ TUBE ◆ TUYAU ◆ ROHR ◆ TUBO
VAS64	VASCHETTA ◆ BOWL ◆ BOL ◆ SCHALE ◆ VASIJA
VEN226	VENTOLA ◆ FAN ◆ VENTILATEUR ◆ LÜFTERRAD ◆ VENTILADOR
VET64	CRISTALLO ESTERNO/INTERNO ◆ EXTERNAL/INTERNAL PLATE GLASS ◆ VITRE EXTERNE/INTERNE ◆ AUSSENGLAS/INNENGLAS ◆ CRISTAL EXTERNO/INTERNO