

# SYNTHESIS 08/50 PW E

**Allegati tecnici**  
**Technical enclosures**  
*Anexos técnicos*  
***Fichiers techniques joints***  
**TECHNISCHE ANLAGEN**

# Tabella codici di riferimento componenti di carpenteria

List of spare component parts

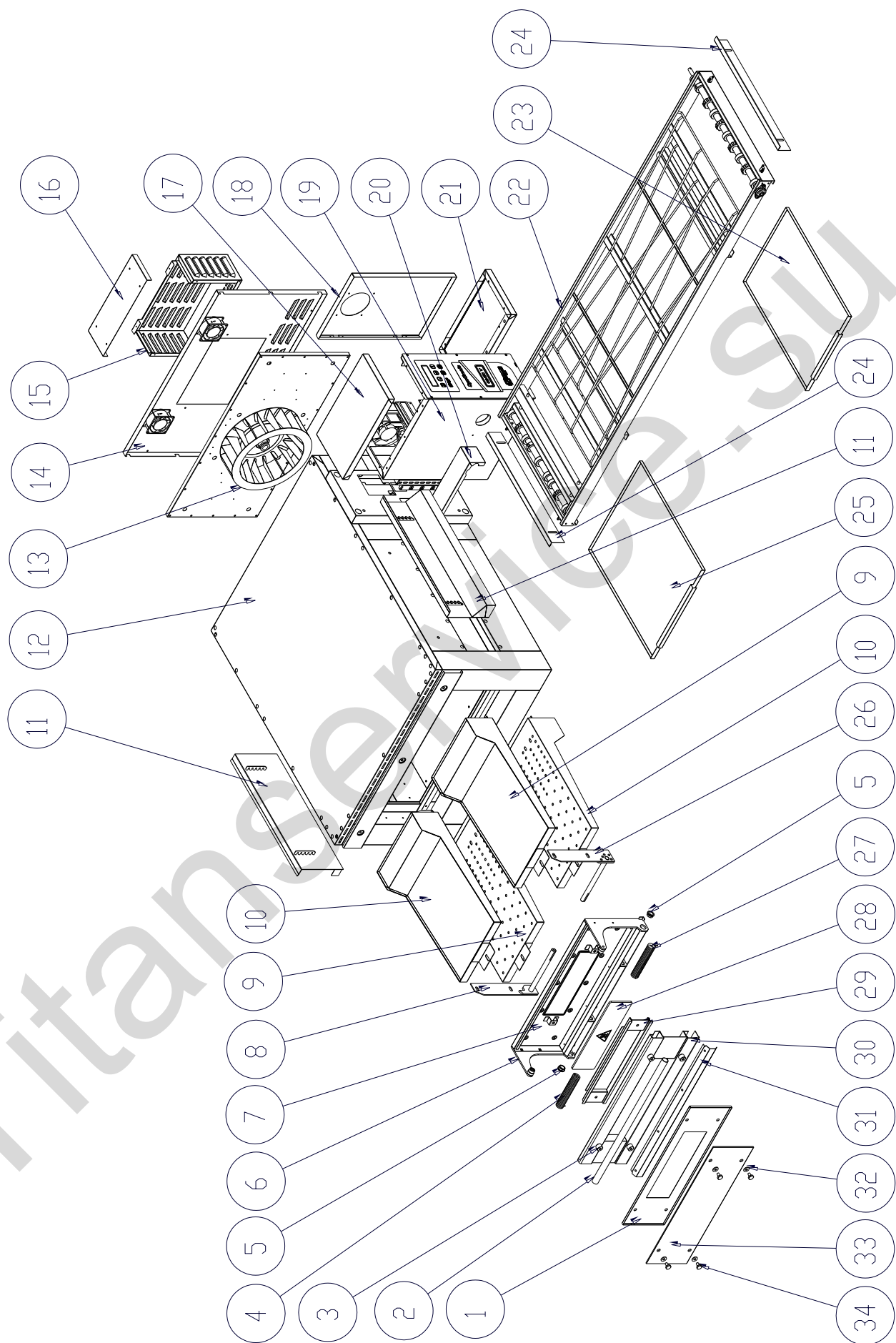
Tabla códigos de referencia componentes de carpintería

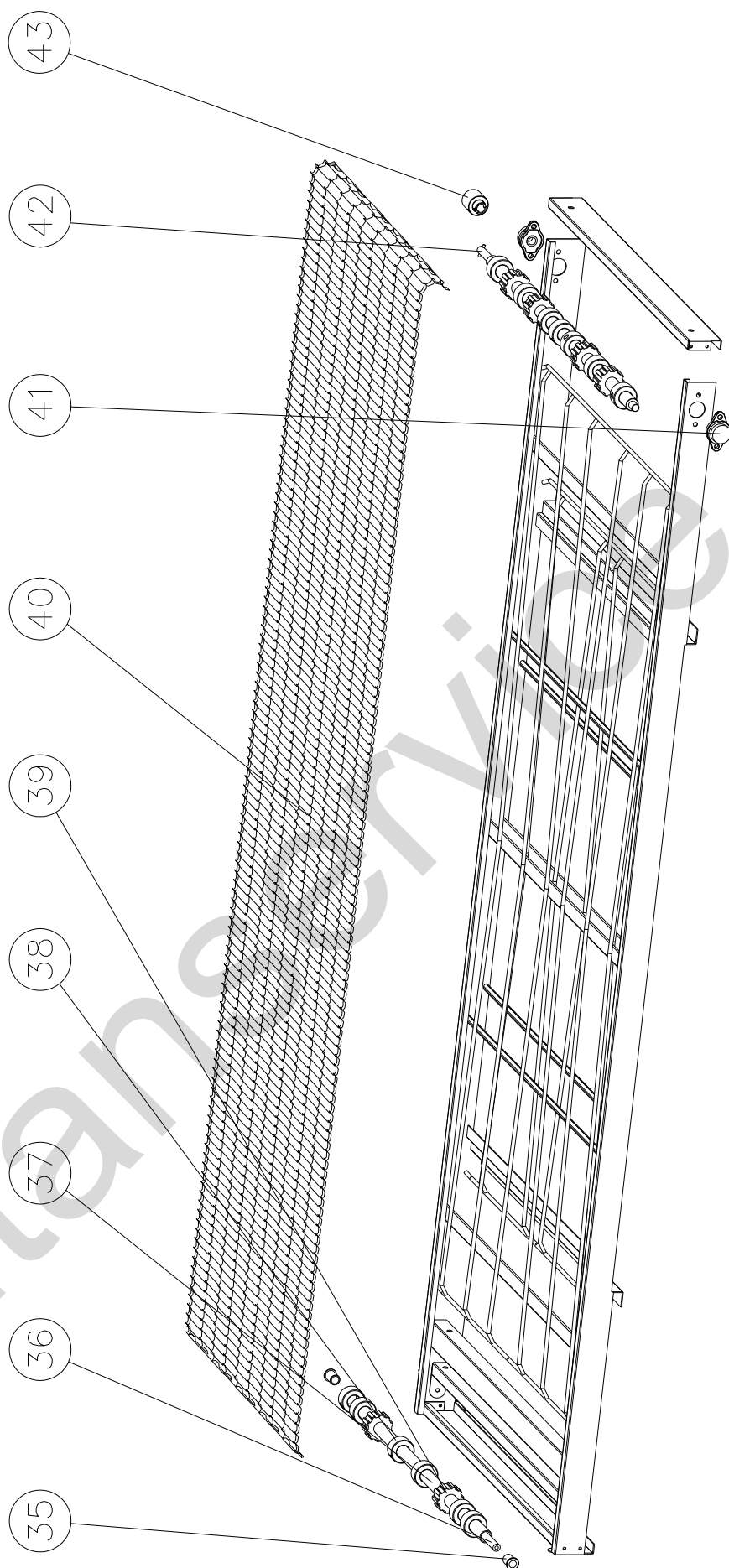
	DESCRIZIONE	DESCRIPTION	DENOMINACIÓN	
1	Telaio vetro esterno porta	Door external glass frame	Telar vidrio externo puerta	CARP1869
2	Maniglia porta	Door handle	Manilla puerta	MANI0080
3	Giunto supporto vetro est.	Coupling for external glass support	Junta soporte vidrio externo	CARP1870
4	Molla sx	Left door spring	Resorte sx	SPRI0009
5	Boccola porta	Door bush	Buje puerta	BOCC0006
6	Telaio portina	Door frame	Telar puerta	PORT0292
7	Porta interna	Internal door	Puerta interior	PORT0293
8	Staffa porta sx	Left staff	Abrazadera puerta sx	SUPP0206
9	Diffusore superiore dx / inferiore sx	Upper diffuser dx / Lower sx	Difusor superior dx / inferior sx	CARP1439
10	Diffusore inferiore dx / superiore sx	Lower diffuser dx / Upper sx	Difusor inferior dx / superior sx	CARP1440
11	Paratoia	Cofferdam	Compuerta	CARP1433
12	Cielo forno	Oven top	Cielo horno	FIAN0317
13	Ventola primaria	Fan primary	Ventilador primario	VENT0018
14	Pannello posteriore	Rear Panel	Panel posterior	FIAN0458
15	Carter motore ventilazione inferiore	Lower ventilation motor casing	Cárter motor ventilación inferior	FIAN0457
16	Carter motore ventilazione superiore	Upper ventilation motor casing	Cárter motor ventilación superior	FIAN0456
17	Cielo carter comandi	Sky carter commands	Cielo cárter comandos	CART0131
18	Pannello chiusura carter comandi	Command Panel carter	Panel cierre cárter comandos	CART0134
19	Fascia carter comandi	Carter commands	Banda cárter comandos	CART0130
20	Protezione giunto rete	Coverjoint	Protección junta red	CARP1437
21	Base carter comandi	Base carter commands	Base cárter comandos	CART0132
22	Bancale rete	Pallet Conveyor	Bancada red	CARP1427
23	Teglia telaio rete uscita	Baking tin frame conveyor exit	Bandeja telar red salida	CARP1431
24	Fermo registrabile	Stop Recording	Afianzador registrable	CARP1443
25	Teglia telaio rete ingresso	Baking tin frame conveyor input	Bandeja telar red ingreso	CARP1432
26	Staffa porta dx	Right staff	Abrazadera puerta dx	SUPP0207
27	Molla dx	Right door spring	Resorte dx	SPRI0010
28	Cristallo porta	Glass door	Cristal puerta	CRIS0026
29	Ferma vetro porta	Door holder	Tope vidrio puerta	CARP0545
30	Porta esterna	External door	Puerta externa	PORT0294
31	Copri molla porta	Door spring cover	Protección resorte puerta	CARP1442
32	Rondella gomma vetro esterno	Rubber washer for external glass	Arandela goma vidrio externo	GUAR0051
33	Vetro esterno porta	Door external glass	Vidrio externo puerta	CRIS0076
34	Vite supporto vetro esterno	Screw for external glass support	Tornillo soporte vidrio externo	CARP1871
35	Boccola albero folle	Bush	Buje árbol vacío	BOCC0013
36	Perno albero folle	Idle shaft	Árbol vacío interior	MECC0467
37	Tubo tendi rete	Tube tend Conveyor	Árbol vacío exterior	MECC0472
38	Distanziale rete	Spacer Conveyor	Distanciador red	MECC0036
39	Ruota rete	Rotate Conveyor	Rueda red	MECC0035
40	Rete	Conveyor	Red	RETE0013
41	Cuscinetto rete	Conveyor bearing	Cojinete red	CUSC0022
42	Albero traino rete	Conveyor driving shaft	Árbol arrastre red	MECC0571
43	Giunto traino rete	Conveyor Joint hub	Junta arrastre red	MECC0114

## Table codes de référence composants de charpenterie

### METALLBESTANDTEILE - KODENTABELLE

	DÉSIGNATION	BESCHREIBUNG	
1	<b>Structure vitre externe porte</b>	AUßENGLASRAHMEN TÜR	CARP1869
2	<b>Poignée porte</b>	TÜRGRIFF	MANI0080
3	<b>Joint support vitre externe</b>	VERBINDUNGSSTÜCK AUßENGLASSCHEIBE	CARP1870
4	<b>Ressort gauche</b>	LINKE FEDER	SPRI0009
5	<b>Raccord porte</b>	TÜRBÜCHSE	BOCC0006
6	<b>Structure porte</b>	TÜRRAHMEN	PORT0292
7	<b>Porte interne</b>	TÜRINNENSEITE	PORT0293
8	<b>Etrier porte gauche</b>	LINKER TÜRHALTER	SUPP0206
9	<b>Diffuseur sup. droit / inf. gauche</b>	VERTEILER OBEN RECHTS / UNTEN LINKS	CARP1439
10	<b>Diffuseur inf. droit / sup. gauche</b>	VERTEILER UNTEN RECHTS / OBEN LINKS	CARP1440
11	<b>Vanne</b>	PLATTE	CARP1433
12	<b>Voûte four</b>	OFENDECKE	FIAN0317
13	<b>Ventilateur primaire</b>	HAUPTVENTILATOR	VENT0018
14	<b>Panneau postérieur</b>	HINTERE PLATTE	FIAN0458
15	<b>Carter moteur ventilation inférieur</b>	MOTORABDECKUNG UNTERES GEBLÄSES	FIAN0457
16	<b>Carter moteur ventilation supérieur</b>	MOTORABDECKUNG OBERES GEBLÄSES	FIAN0456
17	<b>Voûte carter des commandes</b>	DECKEL ABDECKUNG SCHALTUNGSVORRICHTUNG	CART0131
18	<b>Panneau fermeture carter commandes</b>	ABDECKUNGSPLATTE SCHALTUNGSVORRICHTUNG	CART0134
19	<b>Partie carter des commandes</b>	ABDECKUNGSPLATTE SCHALTUNGSVORRICHTUNG	CART0130
20	<b>Protection joint réseau</b>	SCHUTZABDECKUNG NETZBANDKUPPLUNG	CARP1437
21	<b>Base carter des commandes</b>	GRUNDPLATTE ABDECKUNG SCHALTUNGSVORRICHTUNG	CART0132
22	<b>Support ruban transporteur</b>	NETZBANDRAHMEN	CARP1427
23	<b>Plat structure ruban transp. sortie</b>	BACKBLECH NETZBANDRAHMEN - AUSLAUF	CARP1431
24	<b>Butée réglable</b>	EINSTELLBARER HALTER	CARP1443
25	<b>Plat structure ruban transp. Entrée</b>	BACKBLECH NETZBANDRAHMEN - EINLAUF	CARP1432
26	<b>Etrier porte droite</b>	RECHTER TÜRHALTER	SUPP0207
27	<b>Ressort droit</b>	RECHTE FEDER	SPRI0010
28	<b>Verre porte</b>	TÜRGLAS	CRIS0026
29	<b>Parclose porte</b>	GLASHALTER TÜR	CARP0545
30	<b>Porte externe</b>	AUßENTÜR	PORT0294
31	<b>Couvre ressort porte</b>	TÜRFEDERABDECKUNG	CARP1442
32	<b>Rondelle en caoutchouc vitre externe</b>	GUMMIUNTERLEGSCHIEBE AUßENGLAS	GUAR0051
33	<b>Vitre externe porte</b>	AUßENGLAS TÜR	CRIS0076
34	<b>Vis support vitre externe</b>	STÜTZSCHRAUBE AUßENGLAS	CARP1871
35	<b>Fourreau pignon fou</b>	BUCHSE LEERLAUFWELLE	BOCC0013
36	<b>Pignon fou interne</b>	INNERE LEERLAUFWELLE	MECC0467
37	<b>Pignon fou externe</b>	ÄUßERE LEERLAUFWELLE	MECC0472
38	<b>Entretoise ruban transporteur</b>	DISTANZSTÜCK NETZBAND	MECC0036
39	<b>Roue ruban transporteur</b>	NETZBANDRAD	MECC0035
40	<b>Ruban transporteur</b>	NETZBAND	RETE0013
41	<b>Coussinet ruban transporteur</b>	LAGER NETZBAND	CUSC0022
42	<b>Arbre tendeur du ruban transporteur</b>	ANTRIEBSWELLE	MECC0571
43	<b>Joint de traction ruban transporteur</b>	NETZBANDANTRIEBSKUPPLUNG	MECC0114





**Tabella codici di riferimento componenti elettrici**  
List of electrical components parts  
*Tabla códigos de referencia componentes eléctricos*

	DESCRIZIONE	DESCRIPTION	DENOMINACIÓN	
1	Scheda display	Display Card	Cédula display	ELET0673
2	Motore rete (Transtecno) Motore rete (Automec)	Conveyor motor (Transtecno) Conveyor motor (Automec)	Motor red (Transtecno) Motor red (Automec)	MOTO0052 MOTO0004
3	Scheda base	Base board	Cédula base	ELET0676
4	Trasformatore toroidale per scheda base	Toroidal Transformer for Display Card	Trasformador toroidal para cédula base	ELET0156
5	Scheda elettronica rete	Electronic board Conveyor	Cédula electrónica red	ELET0213
6	Teleruttore 32A	Contactor 32A	Telerruptor 32A	ELET0002 ELET0160 ELET0432
7	Morsetto 16 mm <sup>2</sup>	Terminal 16 mm <sup>2</sup>	Borne 16 mm <sup>2</sup>	ELET0719
8	Morsetto di terra 16 mm <sup>2</sup>	Earth terminal 16 mm <sup>2</sup>	Borne de tierra 16 mm <sup>2</sup>	ELET0721
9	Condensatore motore vent.	Condenser fan motor	Condensa motor vent.	ELET0350
10	Termostato di sicurezza 500°C	Safety Thermostat 500°C	Termostato de seguridad 500°C	TERM0005
11	Sonda PT1000	Thermocouple PT1000	Sonda PT1000	TERM0049
12	Ventola raffreddamento	Fan cooling	Ventilador enfriamiento	VENT0012
13	Griglia protezione ventola raff.	Grid Security fan cooling	Reja protección vent.enfriam	VENT0025
14	Ventola raffreddamento	Fan cooling	Ventilador enfriamiento	VENT0024
15	Resistenza cielo (Power) Resistenza cielo (Normal)	Top heating element (Power) Top heating element (Normal)	Resistencia cielo (Power) Resistencia cielo (Normal)	RESI0081 RESI0060
16	Resistenza platea (Power) Resistenza platea (Normal)	Bottom heating element (Power) Bottom heating element (Normal)	Resistencia platea (Power) Resistencia platea (Normal)	RESI0082 RESI0061
17	Filtro ventola raffreddamento	Filter fan cooling	Filtro ventil. enfriamiento	FLTR0003
18	Pannello serigrafato	Serigraph Panel	Panel serigrafiado	PANN0468
19	Pulsantiera	Push button	Botonera	ELET0655
20	Motore ventilazione (50Hz) Motore ventilazione (60Hz)	Fan motor (50 Hz) Fan motor (60 Hz)	Motor ventilación (50Hz) Motor ventilación (60Hz)	MOTO0030 MOTO0076



**Tableau des codes de référence composants électriques**  
**TABELLE BEZUGSARTIKELNUMMERN ELEKTRISCHEN KOMPONENTE**

	DÉSIGNATION	BESCHREIBUNG	
1	<b>Carte display</b>	DISPLAYKARTE	ELET0673
2	<b>Moteur ruban transporteur (Transtecno)</b> <b>Moteur ruban transporteur (Automec)</b>	NETZBANDMOTOR (TRANSTECNO) NETZBANDMOTOR (AUTOMEC)	MOTO0052 MOTO0004
3	<b>Carte base</b>	GRUNDELEKTRONIKKARTE	ELET0676
4	<b>Transformateur toroïdal pour carte base</b>	RINGKERNTRANSFORMATOR FÜR BASISKARTE	ELET0156
5	<b>Carte électronique ruban tranp</b>	ELEKTRONIKKARTE NETZBAND	ELET0213
6	<b>Télérupteur 32A</b>	FERNSCHALTER 32A	ELET0002 ELET0160 ELET0432
7	<b>Borne 16 mm<sup>2</sup></b>	KLEMME 16 MM <sup>2</sup>	ELET0719
8	<b>Borne de terre 16 mm<sup>2</sup></b>	ERDEKLEMME 16 MM <sup>2</sup>	ELET0721
9	<b>Condensateur moteur vent.</b>	KONDENSATOR VENTILATORMOTOR	ELET0350
10	<b>Thermostat de sécurité 500°C</b>	SICHERHEITSTHERMOSTAT 500°C	TERM0005
11	<b>Sonde PT1000</b>	SONDE PT1000	TERM0049
12	<b>Hélice de refroidissement</b>	KÜHLVENTILATOR	VENT0012
13	<b>Grille protection hélice de refroidissement</b>	SCHUTZGITTER KÜHLVENTILATOR	VENT0025
14	<b>Hélice de refroidissement</b>	KÜHLVENTILATOR	VENT0024
15	<b>Résistance voûte (Power)</b> <b>Résistance voûte (Normal)</b>	HEIZWIDERSTAND DECKE (POWER) HEIZWIDERSTAND DECKE (NORMAL)	RESI0081 RESI0060
16	<b>Résistance sole (Power)</b> <b>Résistance sole (Normal)</b>	HEIZWIDERSTAND BODEN (POWER) HEIZWIDERSTAND BODEN (NORMAL)	RESI0082 RESI0061
17	<b>Filtre hélice de refroidissement</b>	FILTER KÜHLVENTILATOR	FLTR0003
18	<b>Panneau sérigraphé</b>	SIEBBEDRUCKTE TAFEL	PANN0468
19	<b>Tableau</b>	DRUCKTASTENTAFEL	ELET0655
20	<b>Moteur ventilation (50 Hz)</b> <b>Moteur ventilation (60 Hz)</b>	VENTILATORMOTOR (50 Hz) VENTILATORMOTOR (60 Hz)	MOTO0030 MOTO0076

