

EXPLODED DRAWING and LIST OF SPARE PARTS

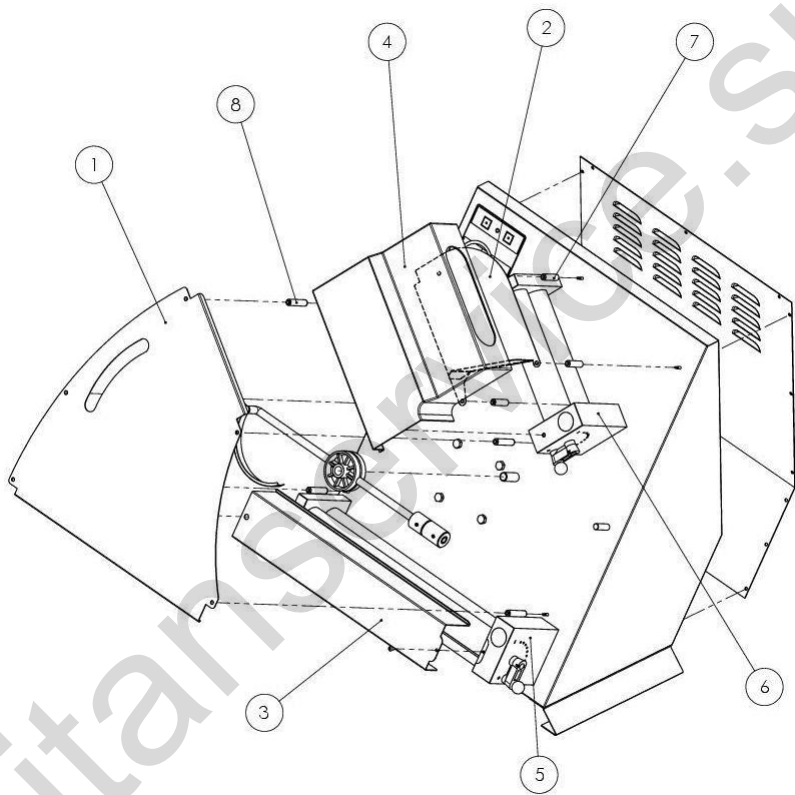


Figure 1

Figure 1 - Roll Mach 32A - P05RO24024

Pos.	Code	Description	Q.ty
1	S47IE54006	RM32A LOWER STEEL SLIDE	1
2	S47SR54001	RM32A UPPER STEEL SLIDE	1
3	S61IE54018	RM32A LOWER GUARD	1
4	A90SU78019	RM32A UPPER GUARD	1
5	S51RL54027	RM32A LOWER ROLLER UNIT	1
6	S51RL54028	RM32A-35A UPPER ROLLER UNIT	1
7	S56SR54001	Ø 10x37 ROLL MACH UPPER SPACER	3
8	S56IE54001	Ø 10x46 ROLL MACH LOWER SPACER	4

Figure 1 - Roll Mach 35A - P05RO24021

Pos.	Code	Description	Q.ty
1	S47IE54010	RM35A LOWER STEEL SLIDE	1
2	S47SR54001	RM35A UPPER STEEL SLIDE	1
3	S61IE54022	RM35A LOWER GUARD	1
4	A90SU78019	RM35A UPPER GUARD	1
5	S51RL54035	RM35A LOWER ROLLER UNIT	1
6	S51RL54028	RM32A-35A UPPER ROLLER UNIT	1
7	S56SR54001	Ø 10x37 ROLL MACH UPPER SPACER	3
8	S56IE54001	Ø 10x46 ROLL MACH LOWER SPACER	4

Figure 1 - Roll Mach 42A - P05RO24025

Pos.	Code	Description	Q.ty
1	S47IE54007	RM42A LOWER STEEL SLIDE	1
2	S47SR54003	RM42A UPPER STEEL SLIDE	1
3	S61IE54020	RM42A LOWER GUARD	1
4	A90SU78020	RM42A UPPER GUARD	1
5	S51RL54031	RM42A LOWER ROLLER UNIT	1
6	S51RL54032	RM42A-45A UPPER ROLLER UNIT	1
7	S56SR54001	Ø 10x37 ROLL MACH UPPER SPACER	3
8	S56IE54001	Ø 10x46 ROLL MACH LOWER SPACER	4

Figure 1 - Roll Mach 42 TA - P05RP24015

Pos.	Code	Description	Q.ty
1	S47IE54013	RM42TA LOWER STEEL SLIDE	1
2	S47SR54006	RM42TA UPPER STEEL SLIDE	1
3	S61IE54020	RM42A-42TA LOWER GUARD	1
4	A90SU78021	RM42TA UPPER GUARD	1
5	S51RL54031	RM42A LOWER ROLLER UNIT	1
6	S51RL54009	RM42TA-45TA UPPER ROLLER UNIT	1
7	S56SR54001	Ø 10x37 ROLL MACH UPPER SPACER	4
8	S56IE54001	Ø 10x46 ROLL MACH LOWER SPACER	4

Figure 1 - Roll Mach 45A - P05RO24023

Pos.	Code	Description	Q.ty
1	S47IE54018	RM45A LOWER STEEL SLIDE	1
2	S47SR54003	RM45A UPPER STEEL SLIDE	1
3	S61IE54032	RM45A LOWER GUARD	1
4	A90SU78020	RM45A UPPER GUARD RM32A	1
5	S51RL54011	RM45A-45TA LOWER ROLLER UNIT	1
6	S51RL54032	RM42A-45A UPPER ROLLER UNIT	1
7	S56SR54001	Ø 10x37 ROLL MACH UPPER SPACER	3
8	S56IE54001	Ø 10x46 ROLL MACH LOWER SPACER	4

Figure 1 - Roll Mach 45 TA - P05RP24011

Pos.	Code	Description	Q.ty
1	S47IE54015	RM45TA LOWER STEEL SLIDE	1
2	S47SR54006	RM42TA UPPER STEEL SLIDE	1
3	S61IE54032	RM45A LOWER GUARD	1
4	A90SU78021	RM42TA UPPER GUARD	1
5	S51RL54011	RM45A-45TA LOWER ROLLER UNIT	1
6	S51RL54009	RM42TA-45 TA UPPER ROLLER UNIT	1
7	S56SR54001	Ø 10x37 ROLL MACH UPPER SPACER	4
8	S56IE54001	Ø 10x46 ROLL MACH LOWER SPACER	4

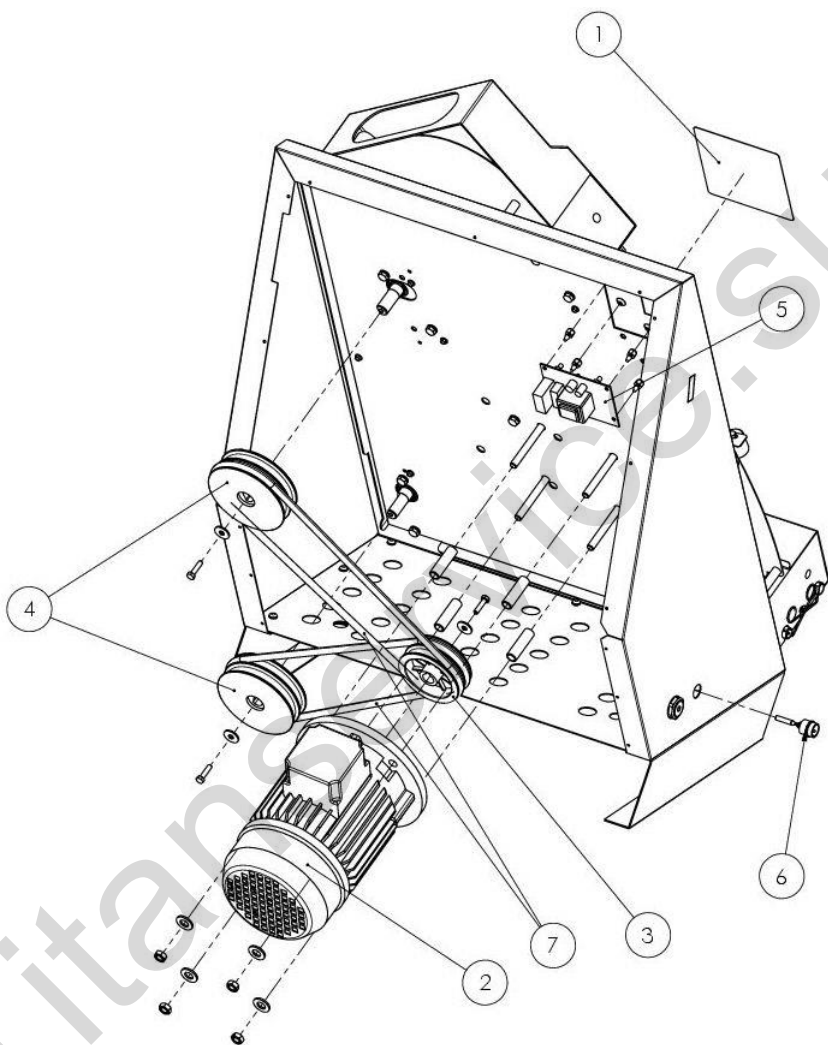


Figure 2

Figure 2 - Roll Mach 32A - P05RO24024

Figure 2 - Roll Mach 35A - P05RO24024

Pos.	Code	Description	Q.ty
1	A93OL78014	CONTROL UNIT LABEL	1
2	A87MR55002	MOTOR 230V-50HZ 0,25kW-0,33HP B5	1
2	A87MR55005	MOTOR 110V-60HZ 0,25kW-0,33HP B5	1 110V-60Hz version
3	A90UL78002	PLASTIC MOTOR PULLEY	1
4	A90UL78001	PLASTIC REDUCTION PULLEY	2
5	A88CY78001	12V "2000" CONTROL PANEL	1
6	A87AZ71001	Ø 15 PEDAL JACK WITH CABLE	OPTIONAL
7	A90KI78004	Ø 8x560 BELT	2

Figure 2 - Roll Mach 42A - P05RO24025

Figure 2 - Roll Mach 42TA - P05RP24015

Figure 2 - Roll Mach 45A - P05RO24023

Figure 2 - Roll Mach 45TA - P05RP24011

Pos.	Code	Description	Q.ty
1	A93OL78014	CONTROL UNIT LABEL	1
2	A87MR55003	MOTOR 230V-50HZ 0,37kW-0,5HP B5	1
2	A87MR55006	MOTOR 110V-60HZ 0,37kW-0,5HP B5	1 110V-60Hz version
3	A90UL78002	PLASTIC MOTOR PULLEY	1
4	A90UL78001	PLASTIC REDUCTION PULLEY	2
5	A88CY78001	12V "2000" CONTROL PANEL	1
6	A87AZ71001	Ø 15 PEDAL JACK WITH CABLE	OPTIONAL
7	A90KI78001	Ø 8x784 BELT	2

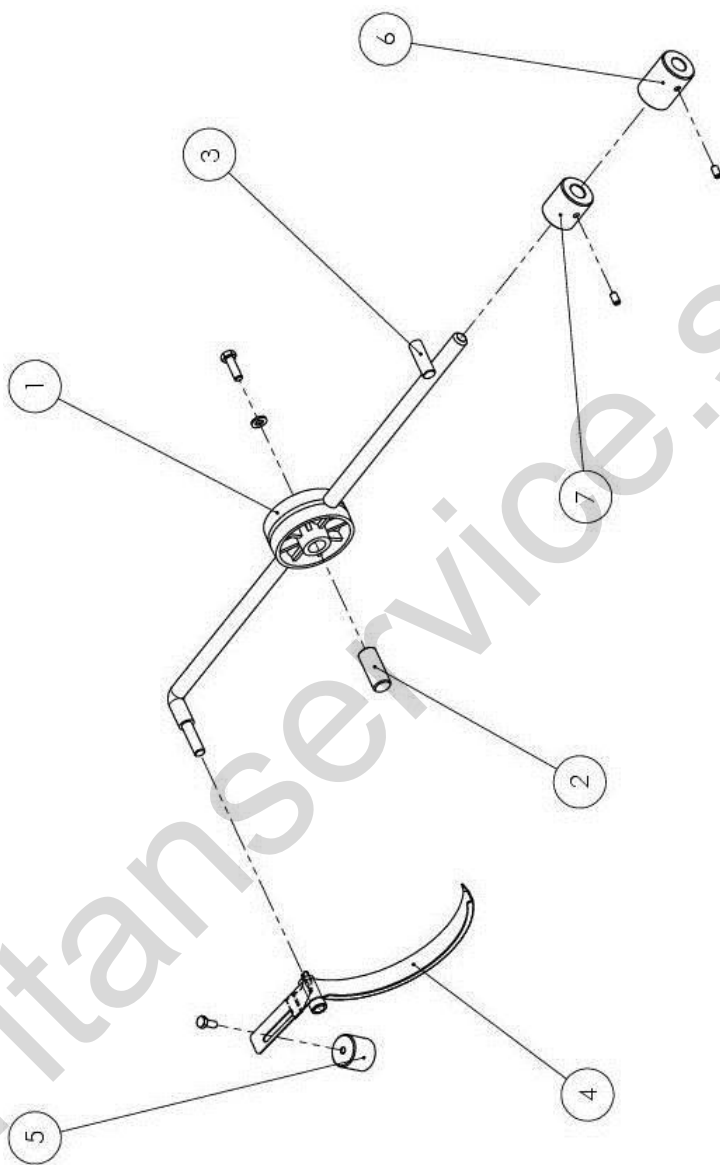


Figure 3

Figure 3 - Roll Mach 32A - P05RO24024

Figure 3 - Roll Mach 35A - P05RO24024

Pos.	Code	Description	Q.ty
1	A90BI54001	RM32-35 SCALE UNIT	1
2	S69FS55001	Ø 14x29,5 M6 STAINLESS STEEL PIN SCALE	1
3	S69FE54001	Ø 10x30 RETAINER PIN BALANCE	1
4	S66BL54001	RM 32 A LIFTING BEAM ASSEMBLY	1
5	S54PX54005	Ø 25x17 COUNTERWEIGHT SCALE	1
6	S54PX54003	Ø 28x38 COUNTERWEIGHT SCALE	1
7	/	/	/

Figure 3 - Roll Mach 42A - P05RO24025

Figure 3 - Roll Mach 42TA - P05RP24015

Figure 3 - Roll Mach 45A - P05RO24023

Figure 3 - Roll Mach 45TA - P05RP24011

Pos.	Code	Description	Q.ty
1	A90BI54002	RM42-45 SCALE UNIT	1
2	S69FS55001	Ø 14x29,5 M6 STAINLESS STEEL PIN SCALE	
3	S69FE54001	Ø 10x30 RETAINER PIN BALANCE	1
4	S66BL54002	RM 42 A LIFTING BEAM ASSEMBLY	1
5	S79BL54001	Ø 25x23 COUNTERWEIGHT SCALE	1
6	S54PX54003	Ø 28x38 COUNTERWEIGHT SCALE	1
7	S54PX54004	Ø 28x38 P40-P40A-P35A COUNTERWEIGHT SCALE	1

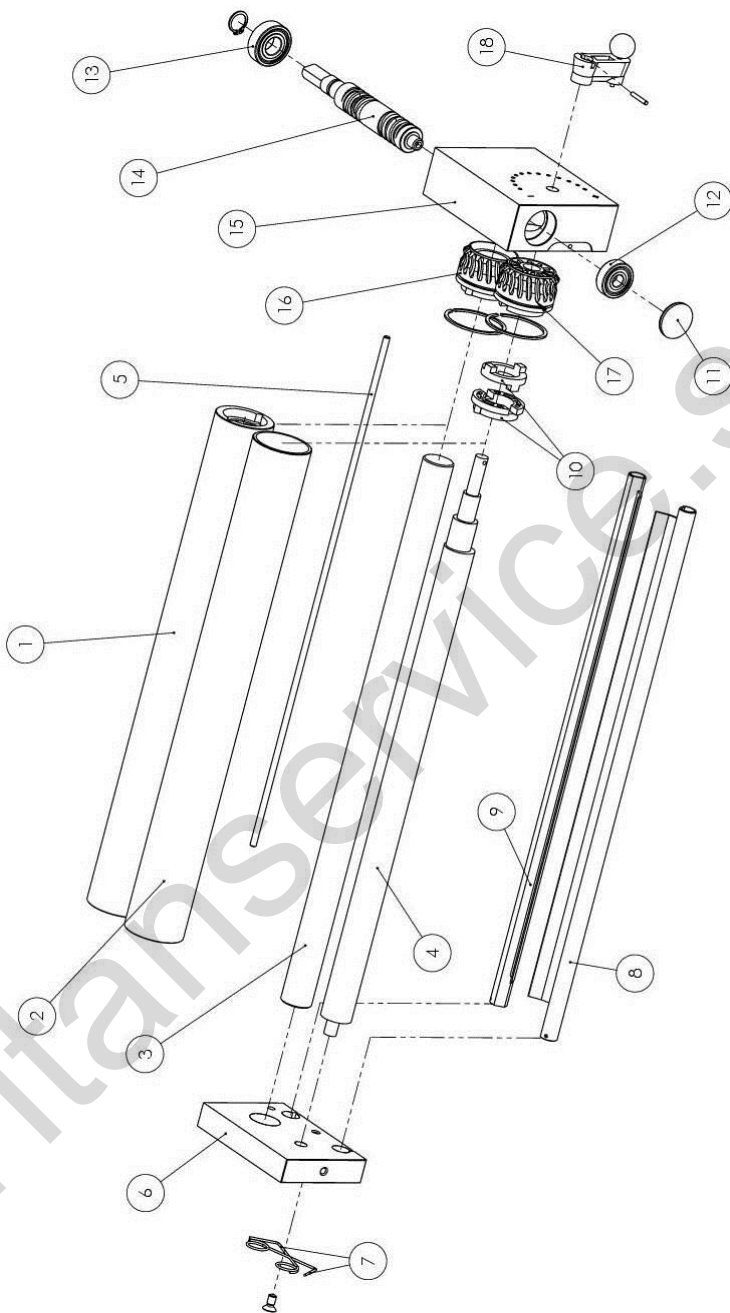


Figure 4 - Lower roller unit

Figure 4 - Lower roller unit S51RL54027 RM32A

Pos.	Code	Description	Q.ty
1	S75CD54009	RM32A LOWER CYLINDRICAL ROLLER	
2	S75EC54009	RM32A LOWER ECCENTRIC ROLLER	1
3	S63CD54006	RM32A LOWER CYLINDRICAL SHAFT	1
4	S63EC54006	RM32A LOWER ECCENTRIC SHAFT	1
5	S61RL54005	Ø 5x334 RM 32 STEEL ROD	1
6	S52IE54006	RM LOWER SMALL SUPPORT	1
7	A86ME30003	RM PIZZA DOUGH SCRAPER SPRING	2
8	S43RA54001	RM 32A FRONT ALUMINUM PIZZA DOUGH SCRAPER	1
9	S43RA54002	RM 32A BACK ALUMINUM PIZZA DOUGH SCRAPER	1
10	S51GN54005	RM MALE/FEMALE GROUP JOINT	1
11	A90TP78003	RM RED RAL 3020 CAP	1
12	A89CK78001	6200 ZZ BEARING	1
13	A89CK78002	6202 ZZ BEARING	1
14	S63TR54009	RM CYLINDRICAL SCREW (ROLLS CENTER DISTANCE OF 50)	1
15	S52RD54010	RM LOWER REDUCTION GEAR SUPPORT	1
16	A90IG78002	RM CYLINDRICAL GEAR	1
17	A90IG78001	RM ECCENTRIC GEAR	1
18	S51GN54001	PIZZA DOUGH ROLL MACH THICKNESS ADJUSTMENT GROUP (RED COLOUR)	1

Figure 4 - Lower roller unit S51RL54035 RM35A – M35

Pos.	Code	Description	Q.ty
1	S75CD54010	RM35A LOWER CYLINDRICAL ROLLER	1
2	S75CD54011	RM35A LOWER ECCENTRIC ROLLER	1
3	S63CD54007	RM35A LOWER CYLINDRICAL SHAFT	1
4	S63EC54007	RM35A LOWER ECCENTRIC SHAFT	1
5	S61RL54003	Ø 5x363 RM 35 STEEL ROD	1
6	S52IE54006	RM LOWER SMALL SUPPORT	1
7	A86ME30003	RM PIZZA DOUGH SCRAPER SPRING	2
8	S43RA54005	RM 35A FRONT ALUMINUM PIZZA DOUGH SCRAPER	1
9	S43RA54006	RM 35A BACK ALUMINUM PIZZA DOUGH SCRAPER	1
10	S51GN54005	RM MALE/FEMALE GROUP JOINT	1
11	A90TP78003	RM RED RAL 3020 CAP	1
12	A89CK78001	6200 ZZ BEARING	1
13	A89CK78002	6202 ZZ BEARING	1
14	S63TR54009	RM CYLINDRICAL SCREW (ROLLS CENTER DISTANCE OF 50)	1
15	S52RD54010	RM LOWER REDUCTION GEAR SUPPORT	1
16	A90IG78002	RM CYLINDRICAL GEAR	1
17	A90IG78001	RM ECCENTRIC GEAR	1
18	S51GN54001	PIZZA DOUGH ROLL MACH THICKNESS ADJUSTMENT GROUP (RED COLOUR)	1

Figure 4 - Lower roller unit S51RL54031 RM42A - RM42TA – M42

Pos.	Code	Description	Q.ty
1	S75CD54008	RM42A-42TA LOWER CYLINDRICAL ROLLER	1
2	S75EC54007	RM42A-42TA LOWER ECCENTRIC ROLLER	1
3	S63CD54002	RM42A-42TA LOWER CYLINDRICAL SHAFT	1
4	S63EC54004	RM42A-42TA LOWER ECCENTRIC SHAFT	1
5	S61RL54003	Ø 5x438 RM 42 STEEL ROD	1
6	S52IE54006	RM LOWER SMALL SUPPORT	1
7	A86ME30003	RM PIZZA DOUGH SCRAPER SPRING	2
8	S43RA54005	RM42A-42TA FRONT ALUMINUM PIZZA DOUGH SCRAPER	1
9	S43RA54006	RM 42A-42TA BACK ALUMINUM PIZZA DOUGH SCRAPER	1
10	S51GN54005	RM MALE/FEMALE GROUP JOINT	1
11	A90TP78003	RM RED RAL 3020 CAP	1
12	A89CK78001	6200 ZZ BEARING	1
13	A89CK78002	6202 ZZ BEARING	1
14	S63TR54009	RM CYLINDRICAL SCREW (ROLLS CENTER DISTANCE OF 50)	1
15	S52RD54010	RM LOWER REDUCTION GEAR SUPPORT	1
16	A90IG78002	RM CYLINDRICAL GEAR	1
17	A90IG78001	RM ECCENTRIC GEAR	1
18	S51GN54001	PIZZA DOUGH ROLL MACH THICKNESS ADJUSTMENT GROUP (RED COLOUR)	1

Figure 4 - Lower roller unit S51RL54011 RM45A - RM45TA

Pos.	Code	Description	Q.ty
1	S75CD54007	RM45A-45TA LOWER CYLINDRICAL ROLLER	1
2	S75EC54008	RM45A-45TA LOWER ECCENTRIC ROLLER	1
3	S63CD54004	RM45A-45TA LOWER CYLINDRICAL SHAFT	1
4	S63EC54005	RM45A-45TA LOWER ECCENTRIC SHAFT	1
5	S61RL54003	Ø 5X510 RM45 STEEL ROD	1
6	S52IE54001	RM LOWER SMALL SUPPORT	1
7	A86ME30003	RM PIZZA DOUGH SCRAPER SPRING	2
8	S43RA54008	RM45A-45TA FRONT ALUMINUM PIZZA DOUGH SCRAPER	1
9	S43RA54007	RM 45A-45TA BACK ALUMINUM PIZZA DOUGH SCRAPER	1
10	S51GN54005	RM MALE/FEMALE GROUP JOINT	1
11	A90TP78003	RM RED RAL 3020 CAP	1
12	A89CK78001	6200 ZZ BEARING	1
13	A89CK78002	6202 ZZ BEARING	1
14	S63TR54010	RM CYLINDRICAL SCREW (ROLLS CENTER DISTANCE OF 60)	1
15	S52RD54003	RM LOWER REDUCTION GEAR SUPPORT	1
16	A90IG78002	RM CYLINDRICAL GEAR	1
17	A90IG78001	RM ECCENTRIC GEAR	1
18	S51GN54001	PIZZA DOUGH ROLL MACH THICKNESS ADJUSTMENT GROUP (RED COLOUR)	1

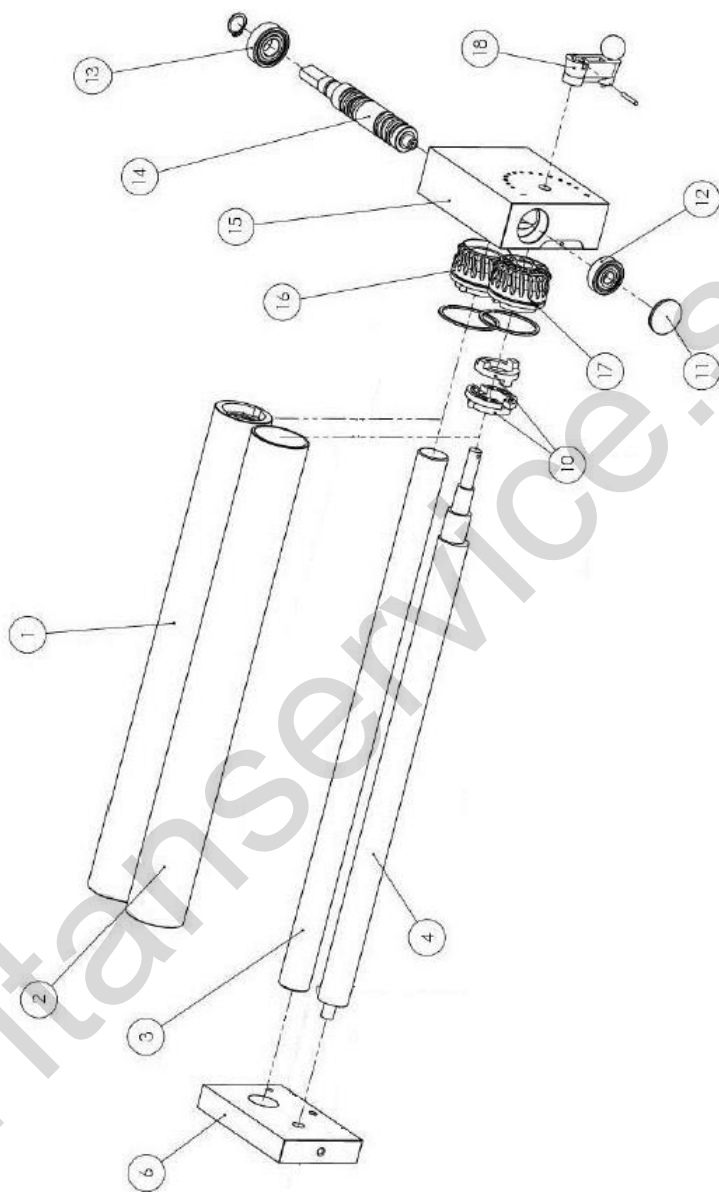


Figure 5 - Upper roller unit

Figure 5 - Upper roller unit S51RL54028 RM32A – RM35

Pos.	Code	Description	Q.ty
1	S75CD54001	RM32A-35A UPPER CYLINDRICAL ROLLER	1
2	S75EC54001	RM32A-35A UPPER ECCENTRIC ROLLER	1
3	S63CD54001	RM32A-35A UPPER CYLINDRICAL SHAFT	1
4	S63EC54001	RM32A-35A UPPER ECCENTRIC SHAFT	1
6	S52IE54006	RM LOWER SMALL SUPPORT	1
10	S51GN54005	RM MALE/FEMALE GROUP JOINT	1
11	A90TP78003	RM RED RAL 3020 CAP	1
12	A89CK78001	6200 ZZ BEARING	1
13	A89CK78002	6202 ZZ BEARING	1
14	S63TR54009	RM CYLINDRICAL SCREW (ROLLS CENTER DISTANCE OF 50)	1
15	S52RD54010	RM LOWER REDUCTION GEAR SUPPORT	1
16	A90IG78002	RM CYLINDRICAL GEAR	1
17	A90IG78001	RM ECCENTRIC GEAR	1
18	S51GN54001	PIZZA DOUGH ROLL MACH THICKNESS ADJUSTMENT GROUP (RED COLOUR)	1

Figure 5 - Upper roller unit S51RL54032 RM42A – RM45A

Pos.	Code	Description	Q.ty
1	S75CD54003	RM42A-45A UPPER CYLINDRICAL ROLLER	1
2	S75EC54003	RM42A-45A UPPER ECCENTRIC ROLLER	1
3	S63CD54005	RM42A-45A UPPER CYLINDRICAL SHAFT	1
4	S63EC54002	RM42A-45A UPPER ECCENTRIC SHAFT	1
6	S52IE54006	RM LOWER SMALL SUPPORT	1
10	S51GN54005	RM MALE/FEMALE GROUP JOINT	1
11	A90TP78003	RM RED RAL 3020 CAP	1
12	A89CK78001	6200 ZZ BEARING	1
13	A89CK78002	6202 ZZ BEARING	1
14	S63TR54009	RM CYLINDRICAL SCREW (ROLLS CENTER DISTANCE OF 50)	1
15	S52RD54010	RM LOWER REDUCTION GEAR SUPPORT	1
16	A90IG78002	RM CYLINDRICAL GEAR	1
17	A90IG78001	RM ECCENTRIC GEAR	1
18	S51GN54001	PIZZA DOUGH ROLL MACH THICKNESS ADJUSTMENT GROUP (RED COLOUR)	1

Figure 5 - Upper roller unit S51RL54009 RM42TA – RM45TA

Pos.	Code	Description	Q.ty
1	S75CD54004	RM42TA-45TA UPPER CYLINDRICAL ROLLER	1
2	S75EC54004	RM42TA-45TA UPPER ECCENTRIC ROLLER	1
3	S63CD54003	RM42TA-45TA UPPER CYLINDRICAL SHAFT	1
4	S63EC54003	RM42TA-45TA UPPER ECCENTRIC SHAFT	1
6	S52IE54006	RM LOWER SMALL SUPPORT	1
10	S51GN54005	RM MALE/FEMALE GROUP JOINT	1
11	A90TP78003	RM RED RAL 3020 CAP	1
12	A89CK78001	6200 ZZ BEARING	1
13	A89CK78002	6202 ZZ BEARING	1
14	S63TR54009	RM CYLINDRICAL SCREW (ROLLS CENTER DISTANCE OF 50)	1
15	S52RD54010	RM LOWER REDUCTION GEAR SUPPORT	1
16	A90IG78002	RM CYLINDRICAL GEAR	1
17	A90IG78001	RM ECCENTRIC GEAR	1
18	S51GN54001	PIZZA DOUGH ROLL MACH THICKNESS ADJUSTMENT GROUP (RED COLOUR)	1

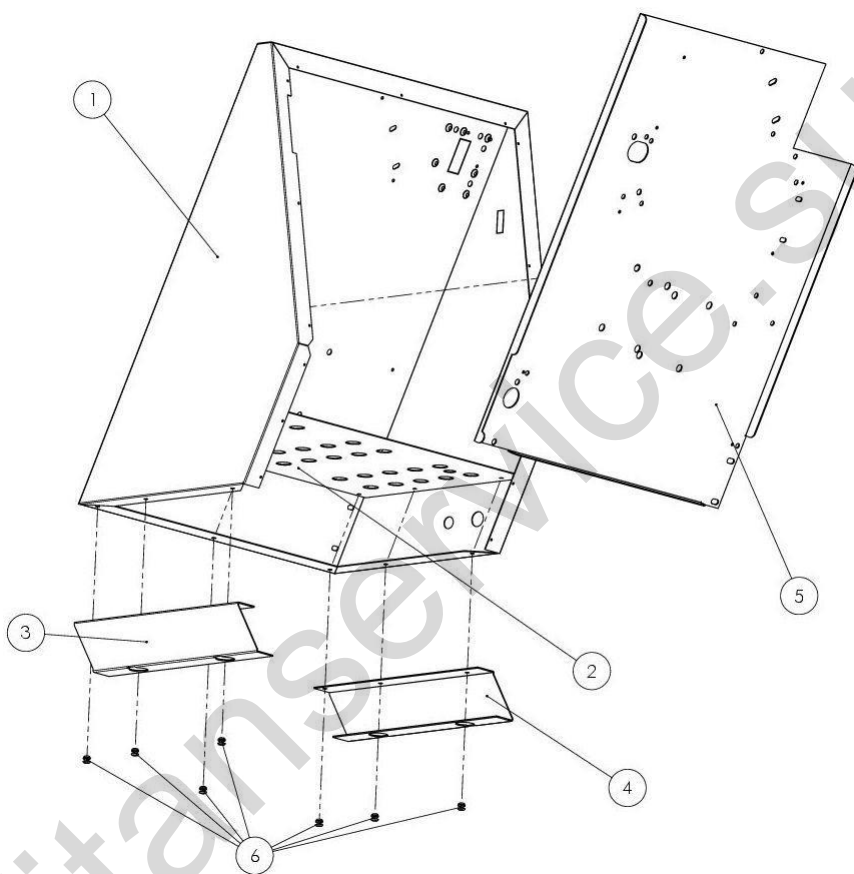


Figure 6

Figure 6 - Enclosure RM32A P05RO24024

Pos.	Code	Description	Q.ty
1	S39SC54035	RM32A EMCLOSURE	1
2	S31DL54018	RM32A GALVANISED SOLE	1
3	S49PA54016	RM32A RIGHT FOOT	1
4	S49PA54018	RM32A LEFT FOOT	1
5	S67DL54021	RM32A SUBPLATE	1
6	/	Stainless steel rivet 4.8x10 roundheaded	7

Figure 6 - Enclosure RM42A P05RO24025

Pos.	Code	Description	Q.ty
1	S39SC54033	RM42A EMCLOSURE	1
2	S31DL54022	RM42A-42TA GALVANISED SOLE	1
3	S49PA54016	RM42A RIGHT FOOT	1
4	S49PA54018	RM42A LEFT FOOT ROLL	1
5	S67DL54036	RM42A-42TA SUBPLATE	1
6	/	Stainless steel rivet 4.8x10 roundheaded	7

Figure 6 - Enclosure RM35A P05RO24021

Pos.	Code	Description	Q.ty
1	S39SC54012	RM35A EMCLOSURE	1
2	S31DL54004	RM35A GALVANISED SOLE	1
3	S49PA54012	RM35A RIGHT FOOT	1
4	S49PA54012	RM35A LEFT FOOT	1
5	S67DL54007	RM35A SUBPLATE	1
6	/	Stainless steel rivet 4.8x10 roundheaded	7

Figure 6 - Enclosure RM45A P05RO24023

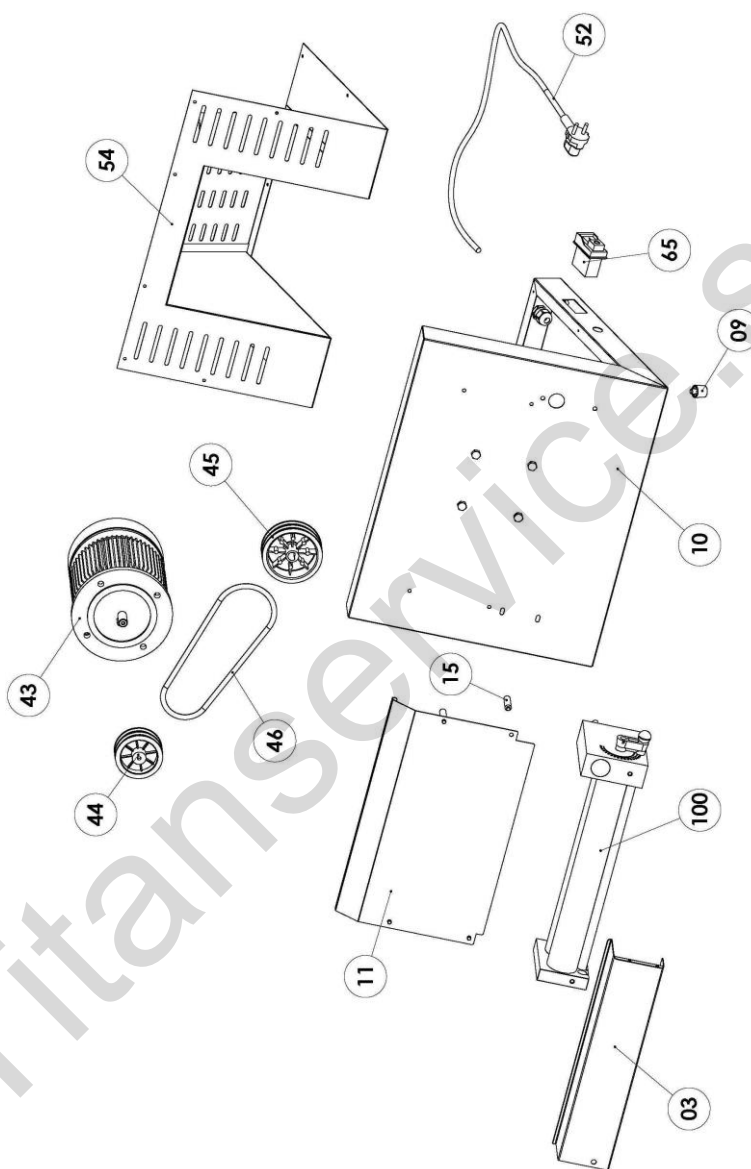
Pos.	Code	Description	Q.ty
1	S39SC54021	RM45A EMCLOSURE	1
2	S31DL54006	RM45A-45TA GALVANISED SOLE	1
3	S49PA54008	RM45A RIGHT FOOT	1
4	S49PA54008	RM45A LEFT FOOT	1
5	S67DL54017	RM45A SUBPLATE	1
6	/	Stainless steel rivet 4.8x10 roundheaded	7

Figure 6 - Enclosure RM42TA P05RP24015

Pos.	Code	Description	Q.ty
1	S39SC54031	RM42TA ENCLOSURE	1
2	S31DL54022	RM42A-42TA GALVANISED SOLE	1
3	S49PA54016	RM42TA RIGHT FOOT	1
4	S49PA54018	RM42TA LEFT FOOT	1
5	S67DL54036	RM42A-RM42TA SUBPLATE	1
6	/	Stainless steel rivet 4.8x10 roundheaded	7

Figure 6 - Enclosure RM45TA P05RP24011

Pos.	Code	Description	Q.ty
1	S39SC54019	RM45TA ENCLOSURE	1
2	S31DL54006	RM45A-45TA GALVANISED SOLE	1
3	S49PA54008	RM45TA RIGHT FOOT	1
4	S49PA54008	RM45TA LEFT FOOT	1
5	S67DL54014	RM45A-RM45TA SUBPLATE	1
6	/	Stainless steel rivet 4.8x10 roundheaded	7



M35A – M42A

M35A

Pos.	Code	Description
03	S61IE54022	RM35A-M35 REAR GUARD
09	A90XP78001	BLACK CORNER FOOT RIVET
10	S39SC54010	M35 STEEL ENCLOSURE
11	S47MO54003	M35 STEEL SLIDE
15	S56SR54001	Ø 10x37 RM UPPER SPACER
43	A87MR55002	MOTOR 230V-50HZ 0,25kW-0,33HP B5
43	A87MR55005	MOTOR 110V-60HZ 0,25kW-0,33HP B5 (110V version)
44	A90UL78002	PLASTIC MOTOR PULLEY
45	A90UL78001	PLASTIC REDUCTION PULLEY
46	A90KI78004	Ø 8x560 BELT
52	A87CX64001	FEED CABLE H05VV-F 3X0,75
54	S66CQ54004	M35 MOTOR CASING ASSEMBLY
65	A96ZN00083	KLD-28A START/STOP GREEN/RED BUTTON
100	S51RL54044	M35 LOWER ROLLER UNIT

M42A

Pos.	Code	Description
03	S61IE54020	RM 42 A Release 2012 REAR GUARD
09	A90XP78001	BLACK CORNER FOOT RIVET 18mm
10	S39SC54023	M42 STEEL ENCLOSURE
11	S47MO54001	M42 STEEL SLIDE
15	S56SR54001	Ø 10x37 RM UPPER SPACER
43	A87MR55003	MOTOR 230V-50HZ 0,37kW-0,5HP B5
43	A87MR55006	MOTOR 110V-60HZ 0,37kW-0,5HP B5 (110V version)
44	A90UL78002	PLASTIC MOTOR PULLEY
45	A90UL78001	PLASTIC REDUCTION PULLEY
46	A90KI78002	Ø 8x680 BELT
52	A87CX64001	FEED CABLE H05VV-F 3X0,75
54	S66CQ54001	M42 MOTOR CASING ASSEMBLY
65	A96ZN00083	KLD-28A START/STOP GREEN/RED BUTTON
100	S51RL54045	M42 LOWER ROLLER UNIT

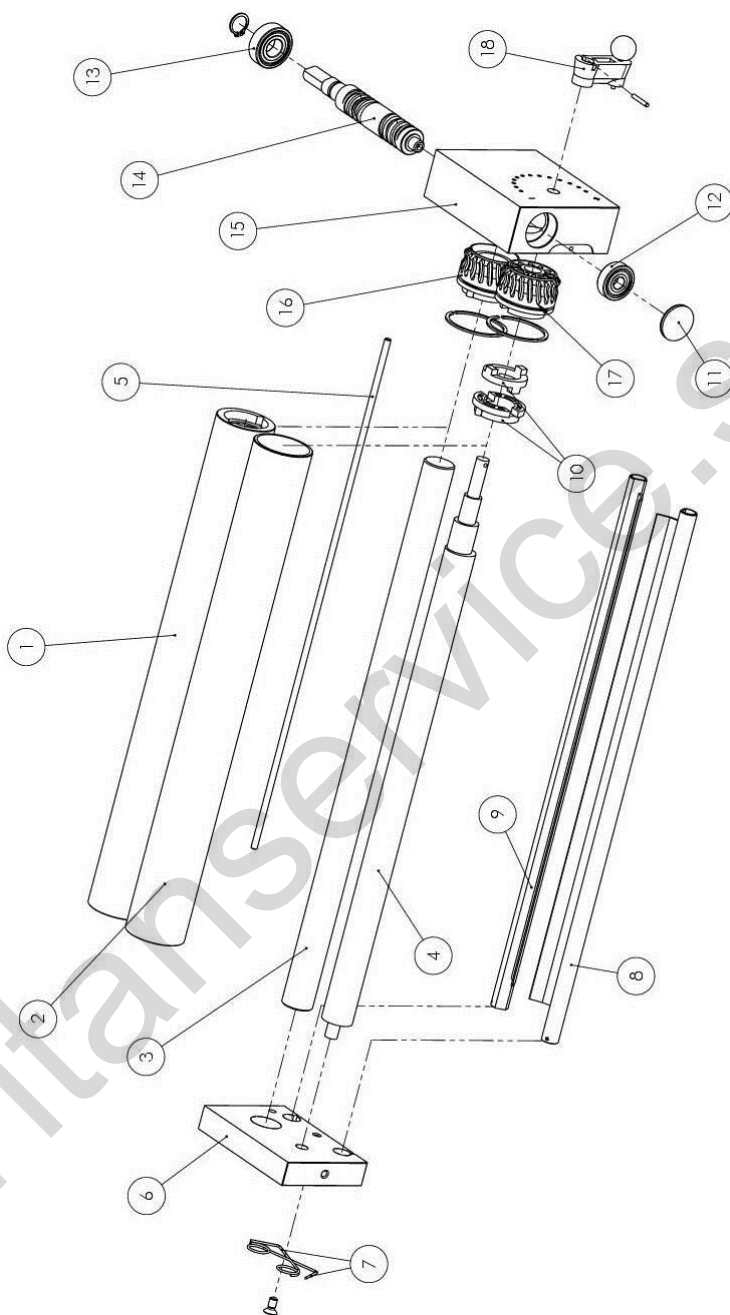


Figure 7 – Roller unit M35 – M42

Figure 7 - Roller unit S51RL54044 M35

Pos.	Code	Description	Q.ty
1	S75CD54010	M35A LOWER CYLINDRICAL ROLLER	1
2	S75CD54011	M35A LOWER ECCENTRIC ROLLER	1
3	S63CD54007	M35A LOWER CYLINDRICAL SHAFT	1
4	S63EC54007	M35A LOWER ECCENTRIC SHAFT	1
5	S61RL54003	Ø 5x363 RM 35 STEEL ROD	1
6	S52IE54006	RM LOWER SMALL SUPPORT	1
7	A86ME30003	RM PIZZA DOUGH SCRAPER SPRING	2
8	S43RA54005	RM 35A FRONT ALUMINUM PIZZA DOUGH SCRAPER	1
9	S43RA54006	RM 35A BACK ALUMINUM PIZZA DOUGH SCRAPER	1
10	S51GN54005	RM MALE/FEMALE GROUP JOINT	1
11	A90TP78003	RM RED RAL 3020 CAP	1
12	A89CK78001	6200 ZZ BEARING	1
13	A89CK78002	6202 ZZ BEARING	1
14	S63TR54009	RM CYLINDRICAL SCREW (ROLLS CENTER DISTANCE OF 50)	1
15	S52RD54010	RM LOWER REDUCTION GEAR SUPPORT	1
16	A90IG78002	RM CYLINDRICAL GEAR	1
17	A90IG78001	RM ECCENTRIC GEAR	1
18	S51GN54001	PIZZA DOUGH ROLL MACH THICKNESS ADJUSTMENT GROUP (RED COLOUR)	1

Figure 7 - Roller unit S51RL54045 M42

Pos.	Code	Description	Q.ty
1	S75CD54008	M42A LOWER CYLINDRICAL ROLLER	1
2	S75EC54007	M42A LOWER ECCENTRIC ROLLER	1
3	S63CD54002	M42A LOWER CYLINDRICAL SHAFT	1
4	S63EC54004	M42 LOWER ECCENTRIC SHAFT	1
5	S61RL54003	Ø 5x438 RM 42 STEEL ROD	1
6	S52IE54006	RM LOWER SMALL SUPPORT	1
7	A86ME30003	RM PIZZA DOUGH SCRAPER SPRING	2
8	S43RA54005	RM42A-42TA FRONT ALUMINUM PIZZA DOUGH SCRAPER	1
9	S43RA54006	RM 42A-42TA BACK ALUMINUM PIZZA DOUGH SCRAPER	1
10	S51GN54005	RM MALE/FEMALE GROUP JOINT	1
11	A90TP78003	RM RED RAL 3020 CAP	1
12	A89CK78001	6200 ZZ BEARING	1
13	A89CK78002	6202 ZZ BEARING	1
14	S63TR54009	RM CYLINDRICAL SCREW (ROLLS CENTER DISTANCE OF 50)	1
15	S52RD54010	RM LOWER REDUCTION GEAR SUPPORT	1
16	A90IG78002	RM CYLINDRICAL GEAR	1
17	A90IG78001	RM ECCENTRIC GEAR	1
18	S51GN54001	PIZZA DOUGH ROLL MACH THICKNESS ADJUSTMENT GROUP (RED COLOUR)	1

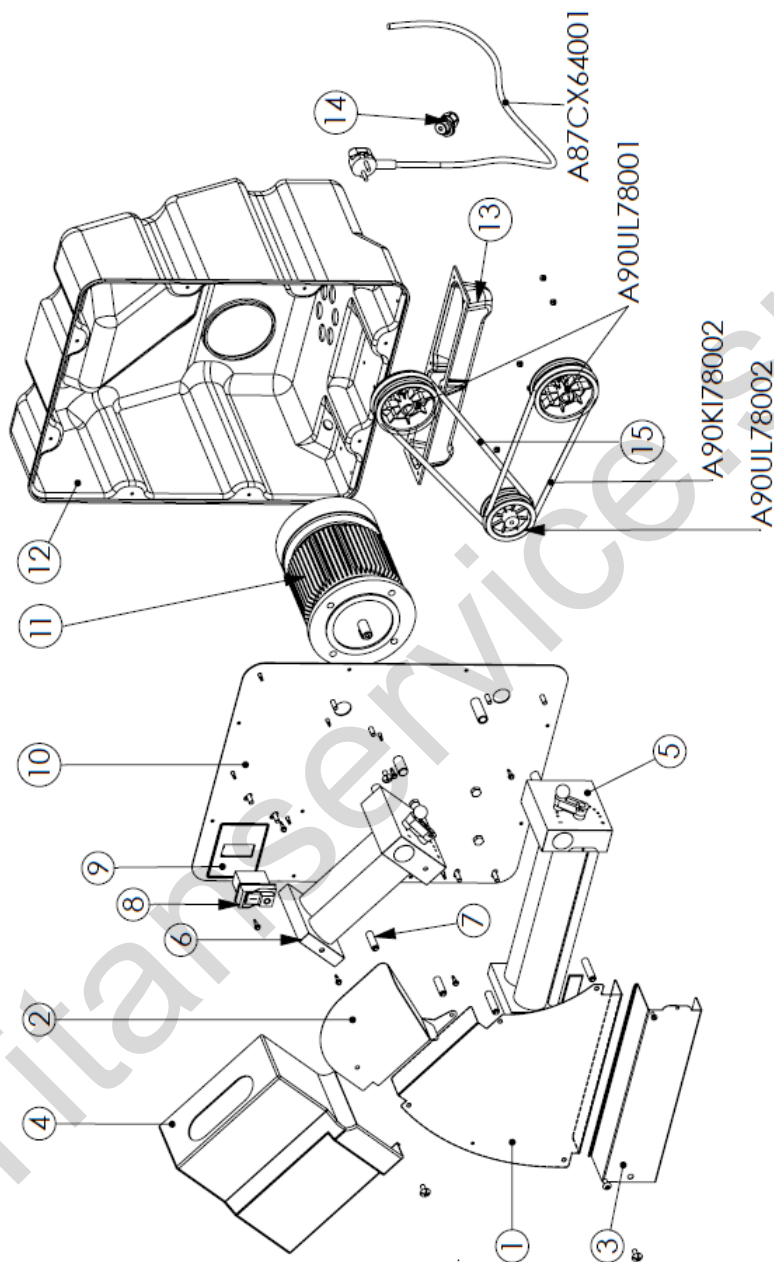


Figure 8 – RM30P – RM40P

Figure 8 – Roll-Mach RM30P – P05RO25015

Pos.	Code	Description	Q.ty
1	S47IE54034	RM30P LOWER STEEL SLIDE	1
2	S47SR54019	RM30P UPPER STEEL SLIDE	1
3	S61IE54034	RM30P LOWER GUARD	1
4	A90SU78019	RM30P UPPER GUARD	1
5	S51RL54003	RM30P LOWER ROLLER UNIT	1
6	S51RL54001	RM30P UPPER ROLLER UNIT	1
7	S56SR54001	Ø 10x37 ROLL MACH UPPER SPACER	1
8	A96ZN00083	KLD-28A START/STOP GREEN/RED BUTTON	1
9	A93OL78002	CONTROL UNIT LABEL	1
10	S41SC54006	RM30P INOX PLATE	1
11	A87MR55002	MOTOR 230V-50HZ 0,25kW-0,33HP B5	1
12	A90FF78005	RM30P GREY PLASTIC BOX RAL7037	1
13	A90FF78007	RM30P PLASTIC FEET	1
14	A86EL46002	CABLE FASTENER	1
15	A87CX64001	FEED CABLE H05VV-F 3X0,75	1

Figure 8 – Roll-Mach RM40P – P05RO25017

Pos.	Code	Description	Q.ty
1	S47IE54007	RM40P LOWER STEEL SLIDE	1
2	S47SR54003	RM40P UPPER STEEL SLIDE	1
3	S61IE54003	RM40P LOWER GUARD	1
4	A90SU78020	RM40P UPPER GUARD	1
5	S51RL54031	RM40P LOWER ROLLER UNIT	1
6	S51RL54032	RM40P UPPER ROLLER UNIT	1
7	S56SR54001	Ø 10x37 ROLL MACH UPPER SPACER	1
8	A96ZN00083	KLD-28A START/STOP GREEN/RED BUTTON	1
9	A93OL78002	CONTROL UNIT LABEL	1
10	S41SC54007	RM40P INOX PLATE	1
11	A87MR55003	MOTOR 230V-50HZ 0,37kW-0,5HP B5	1
12	A90FF78006	RM40P GREY PLASTIC BOX RAL7037	1
13	A90FF78008	RM40P PLASTIC FEET	1
14	A86EL46002	CABLE FASTENER	1
15	A87CX64001	FEED CABLE H05VV-F 3X0,75	1

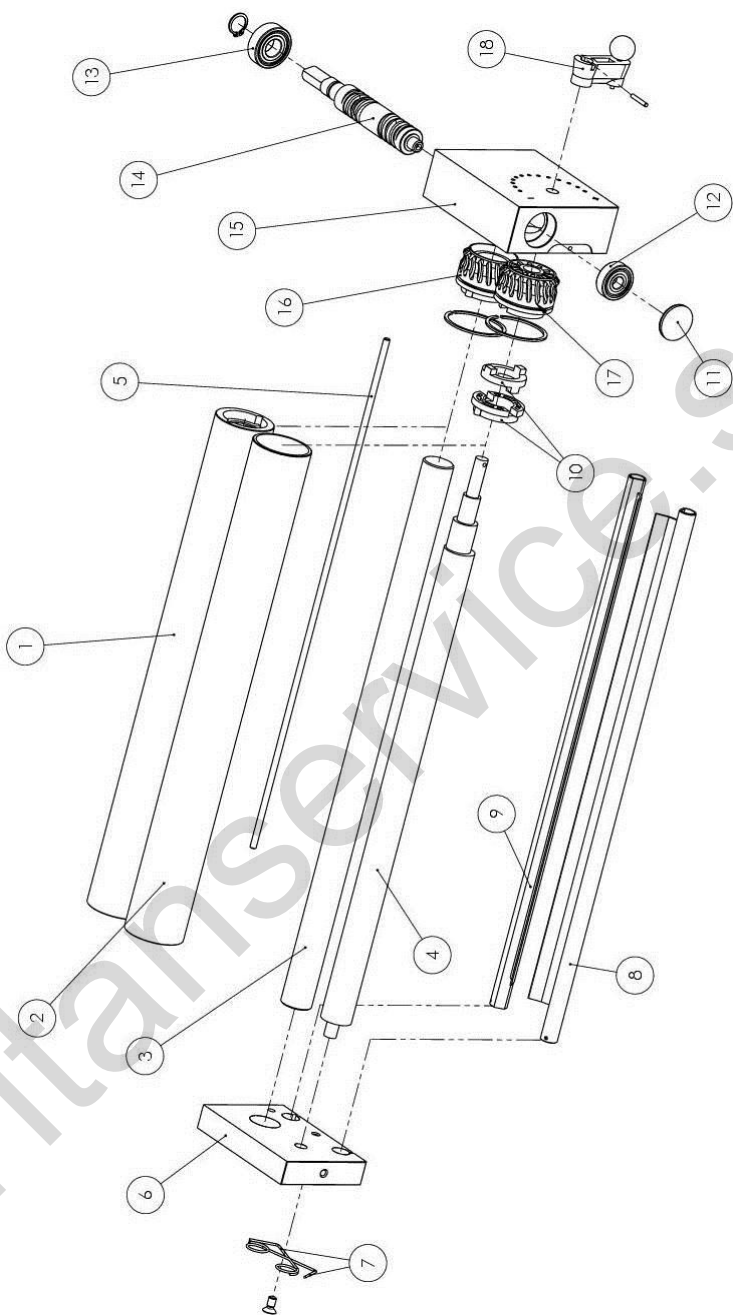


Figure 9 - Lower roller unit

Figure 9 - Lower roller unit S51RL54003 RM30P

Pos.	Code	Description	Q.ty
1	S75CD54005	RM30P LOWER CYLINDRICAL ROLLER	
2	S75EC54005	RM30P LOWER ECCENTRIC ROLLER	1
3	S63CD54003	RM30P LOWER CYLINDRICAL SHAFT	1
4	S63EC54003	RM30P LOWER ECCENTRIC SHAFT	1
5	S61RL54001	Ø 5x315 RM30P STEEL ROD	1
6	S52SR54001	RM30P LOWER SMALL SUPPORT	1
7	A86ME30003	RM PIZZA DOUGH SCRAPER SPRING	2
8	S43RA54004	RM30P FRONT ALUMINUM PIZZA DOUGH SCRAPER	1
9	S43RA54003	RM30P BACK ALUMINUM PIZZA DOUGH SCRAPER	1
10	S51GN54005	RM MALE/FEMALE GROUP JOINT	1
11	A90TP78003	RM RED RAL 3020 CAP	1
12	A89CK78001	6200 ZZ BEARING	1
13	A89CK78002	6202 ZZ BEARING	1
14	S63TR54009	RM CYLINDRICAL SCREW (ROLLS CENTER DISTANCE OF 50)	1
15	S52RD54001	RM30P LOWER REDUCTION GEAR SUPPORT	1
16	A90IG78002	RM CYLINDRICAL GEAR	1
17	A90IG78001	RM ECCENTRIC GEAR	1
18	S51GN54001	PIZZA DOUGH ROLL MACH THICKNESS ADJUSTMENT GROUP (RED COLOUR)	1

Figure 4 - Lower roller unit S51RL54031 RM40P

Pos.	Code	Description	Q.ty
1	S75CD54008	RM42A-42TA LOWER CYLINDRICAL ROLLER	1
2	S75EC54007	RM42A-42TA LOWER ECCENTRIC ROLLER	1
3	S63CD54002	RM42A-42TA LOWER CYLINDRICAL SHAFT	1
4	S63EC54004	RM42A-42TA LOWER ECCENTRIC SHAFT	1
5	S61RL54003	Ø 5x438 RM 42 STEEL ROD	1
6	S52IE54006	RM LOWER SMALL SUPPORT	1
7	A86ME30003	RM PIZZA DOUGH SCRAPER SPRING	2
8	S43RA54005	RM42A-42TA FRONT ALUMINUM PIZZA DOUGH SCRAPER	1
9	S43RA54006	RM 42A-42TA BACK ALUMINUM PIZZA DOUGH SCRAPER	1
10	S51GN54005	RM MALE/FEMALE GROUP JOINT	1
11	A90TP78003	RM RED RAL 3020 CAP	1
12	A89CK78001	6200 ZZ BEARING	1
13	A89CK78002	6202 ZZ BEARING	1
14	S63TR54009	RM CYLINDRICAL SCREW (ROLLS CENTER DISTANCE OF 50)	1
15	S52RD54010	RM LOWER REDUCTION GEAR SUPPORT	1
16	A90IG78002	RM CYLINDRICAL GEAR	1
17	A90IG78001	RM ECCENTRIC GEAR	1
18	S51GN54001	PIZZA DOUGH ROLL MACH THICKNESS ADJUSTMENT GROUP (RED COLOUR)	1

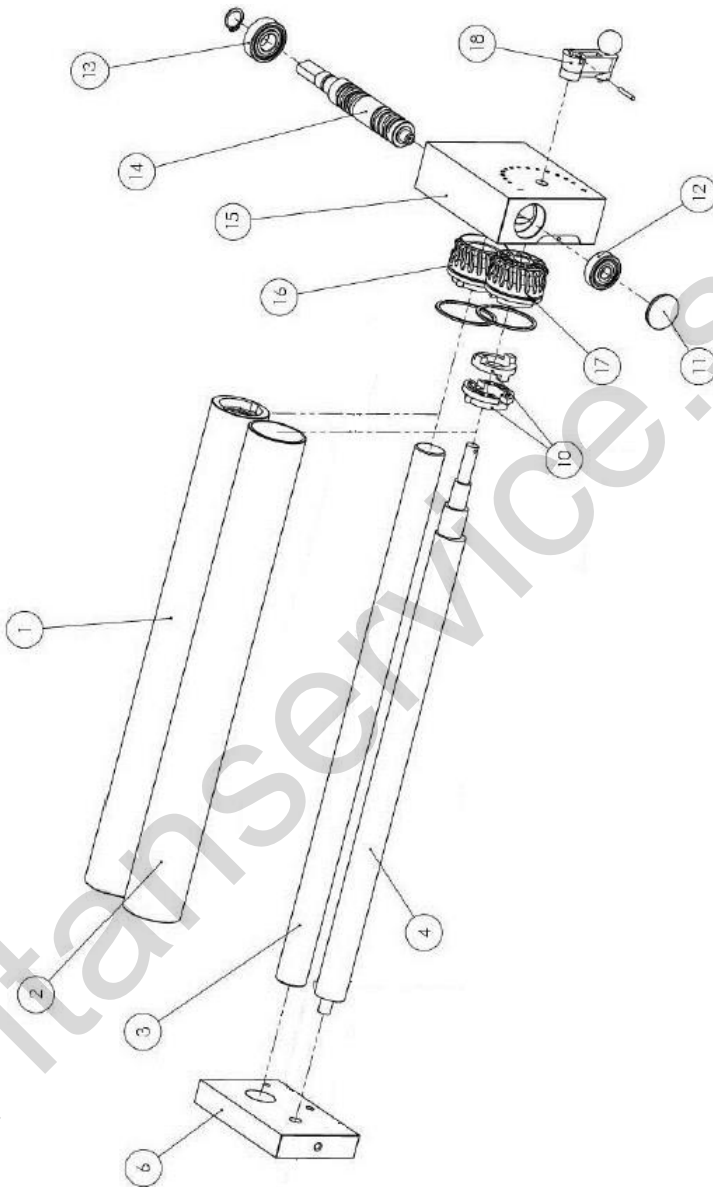


Figure 10 - Upper roller unit

Figure 10 - Upper roller unit S51RL54001 RM30P

Pos.	Code	Description	Q.ty
1	S75CD54001	RM32A-35A UPPER CYLINDRICAL ROLLER	1
2	S75EC54001	RM32A-35A UPPER ECCENTRIC ROLLER	1
3	S63CD54001	RM32A-35A UPPER CYLINDRICAL SHAFT	1
4	S63EC54001	RM32A-35A UPPER ECCENTRIC SHAFT	1
6	S52SR54001	RM LOWER SMALL SUPPORT	1
10	S51GN54005	RM MALE/FEMALE GROUP JOINT	1
11	A90TP78003	RM RED RAL 3020 CAP	1
12	A89CK78001	6200 ZZ BEARING	1
13	A89CK78002	6202 ZZ BEARING	1
14	S63TR54009	RM CYLINDRICAL SCREW (ROLLS CENTER DISTANCE OF 50)	1
15	S52RD54001	RM LOWER REDUCTION GEAR SUPPORT	1
16	A90IG78002	RM CYLINDRICAL GEAR	1
17	A90IG78001	RM ECCENTRIC GEAR	1
18	S51GN54001	PIZZA DOUGH ROLL MACH THICKNESS ADJUSTMENT GROUP (RED COLOUR)	1

Figure 10 - Upper roller unit S51RL54032 RM40P

Pos.	Code	Description	Q.ty
1	S75CD54003	RM42A-45A UPPER CYLINDRICAL ROLLER	1
2	S75EC54003	RM42A-45A UPPER ECCENTRIC ROLLER	1
3	S63CD54005	RM42A-45A UPPER CYLINDRICAL SHAFT	1
4	S63EC54002	RM42A-45A UPPER ECCENTRIC SHAFT	1
6	S52IE54006	RM LOWER SMALL SUPPORT	1
10	S51GN54005	RM MALE/FEMALE GROUP JOINT	1
11	A90TP78003	RM RED RAL 3020 CAP	1
12	A89CK78001	6200 ZZ BEARING	1
13	A89CK78002	6202 ZZ BEARING	1
14	S63TR54009	RM CYLINDRICAL SCREW (ROLLS CENTER DISTANCE OF 50)	1
15	S52RD54010	RM LOWER REDUCTION GEAR SUPPORT	1
16	A90IG78002	RM CYLINDRICAL GEAR	1
17	A90IG78001	RM ECCENTRIC GEAR	1
18	S51GN54001	PIZZA DOUGH ROLL MACH THICKNESS ADJUSTMENT GROUP (RED COLOUR)	1