

EXPLODED DRAWING and LIST OF SPARE PARTS

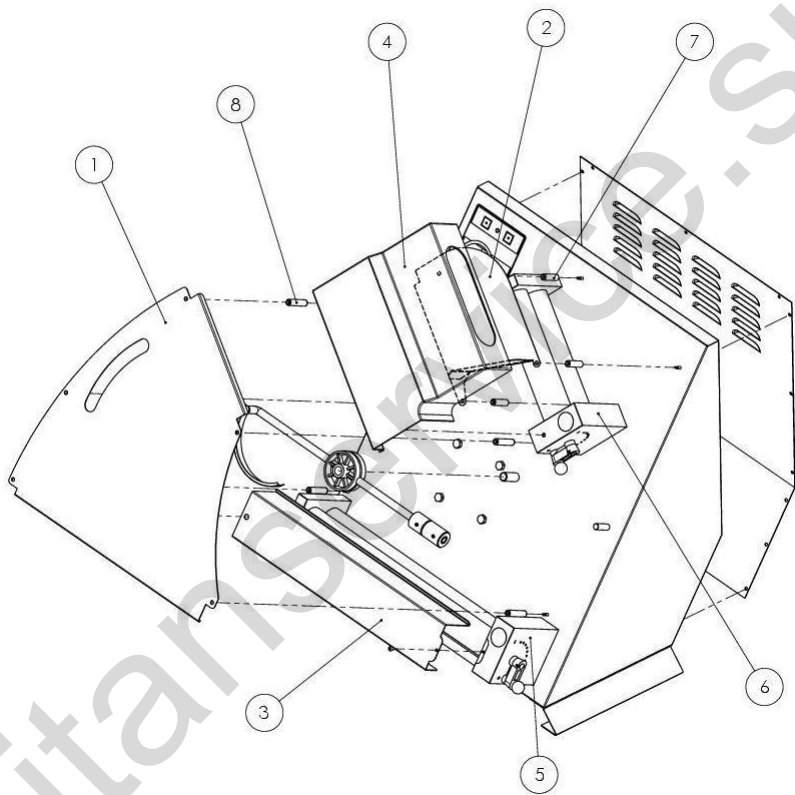


Figure 1

Figure 1 - Roll Mach 32A - P05RO24024

| Pos. | Code | Description | Q.ty |
|------|------------|--------------------------------|------|
| 1 | S47IE54006 | RM32A LOWER STEEL SLIDE | 1 |
| 2 | S47SR54001 | RM32A UPPER STEEL SLIDE | 1 |
| 3 | S61IE54018 | RM32A LOWER GUARD | 1 |
| 4 | A90SU78019 | RM32A UPPER GUARD | 1 |
| 5 | S51RL54027 | RM32A LOWER ROLLER UNIT | 1 |
| 6 | S51RL54028 | RM32A-35A UPPER ROLLER UNIT | 1 |
| 7 | S56SR54001 | Ø 10x37 ROLL MACH UPPER SPACER | 3 |
| 8 | S56IE54001 | Ø 10x46 ROLL MACH LOWER SPACER | 4 |

Figure 1 - Roll Mach 35A - P05RO24021

| Pos. | Code | Description | Q.ty |
|------|------------|--------------------------------|------|
| 1 | S47IE54010 | RM35A LOWER STEEL SLIDE | 1 |
| 2 | S47SR54001 | RM35A UPPER STEEL SLIDE | 1 |
| 3 | S61IE54022 | RM35A LOWER GUARD | 1 |
| 4 | A90SU78019 | RM35A UPPER GUARD | 1 |
| 5 | S51RL54035 | RM35A LOWER ROLLER UNIT | 1 |
| 6 | S51RL54028 | RM32A-35A UPPER ROLLER UNIT | 1 |
| 7 | S56SR54001 | Ø 10x37 ROLL MACH UPPER SPACER | 3 |
| 8 | S56IE54001 | Ø 10x46 ROLL MACH LOWER SPACER | 4 |

Figure 1 - Roll Mach 42A - P05RO24025

| Pos. | Code | Description | Q.ty |
|------|------------|--------------------------------|------|
| 1 | S47IE54007 | RM42A LOWER STEEL SLIDE | 1 |
| 2 | S47SR54003 | RM42A UPPER STEEL SLIDE | 1 |
| 3 | S61IE54020 | RM42A LOWER GUARD | 1 |
| 4 | A90SU78020 | RM42A UPPER GUARD | 1 |
| 5 | S51RL54031 | RM42A LOWER ROLLER UNIT | 1 |
| 6 | S51RL54032 | RM42A-45A UPPER ROLLER UNIT | 1 |
| 7 | S56SR54001 | Ø 10x37 ROLL MACH UPPER SPACER | 3 |
| 8 | S56IE54001 | Ø 10x46 ROLL MACH LOWER SPACER | 4 |

Figure 1 - Roll Mach 42 TA - P05RP24015

| Pos. | Code | Description | Q.ty |
|------|------------|--------------------------------|------|
| 1 | S47IE54013 | RM42TA LOWER STEEL SLIDE | 1 |
| 2 | S47SR54006 | RM42TA UPPER STEEL SLIDE | 1 |
| 3 | S61IE54020 | RM42A-42TA LOWER GUARD | 1 |
| 4 | A90SU78021 | RM42TA UPPER GUARD | 1 |
| 5 | S51RL54031 | RM42A LOWER ROLLER UNIT | 1 |
| 6 | S51RL54009 | RM42TA-45TA UPPER ROLLER UNIT | 1 |
| 7 | S56SR54001 | Ø 10x37 ROLL MACH UPPER SPACER | 4 |
| 8 | S56IE54001 | Ø 10x46 ROLL MACH LOWER SPACER | 4 |

Figure 1 - Roll Mach 45A - P05RO24023

| Pos. | Code | Description | Q.ty |
|------|------------|--------------------------------|------|
| 1 | S47IE54018 | RM45A LOWER STEEL SLIDE | 1 |
| 2 | S47SR54003 | RM45A UPPER STEEL SLIDE | 1 |
| 3 | S61IE54032 | RM45A LOWER GUARD | 1 |
| 4 | A90SU78020 | RM45A UPPER GUARD RM32A | 1 |
| 5 | S51RL54011 | RM45A-45TA LOWER ROLLER UNIT | 1 |
| 6 | S51RL54032 | RM42A-45A UPPER ROLLER UNIT | 1 |
| 7 | S56SR54001 | Ø 10x37 ROLL MACH UPPER SPACER | 3 |
| 8 | S56IE54001 | Ø 10x46 ROLL MACH LOWER SPACER | 4 |

Figure 1 - Roll Mach 45 TA - P05RP24011

| Pos. | Code | Description | Q.ty |
|------|------------|--------------------------------|------|
| 1 | S47IE54015 | RM45TA LOWER STEEL SLIDE | 1 |
| 2 | S47SR54006 | RM42TA UPPER STEEL SLIDE | 1 |
| 3 | S61IE54032 | RM45A LOWER GUARD | 1 |
| 4 | A90SU78021 | RM42TA UPPER GUARD | 1 |
| 5 | S51RL54011 | RM45A-45TA LOWER ROLLER UNIT | 1 |
| 6 | S51RL54009 | RM42TA-45 TA UPPER ROLLER UNIT | 1 |
| 7 | S56SR54001 | Ø 10x37 ROLL MACH UPPER SPACER | 4 |
| 8 | S56IE54001 | Ø 10x46 ROLL MACH LOWER SPACER | 4 |

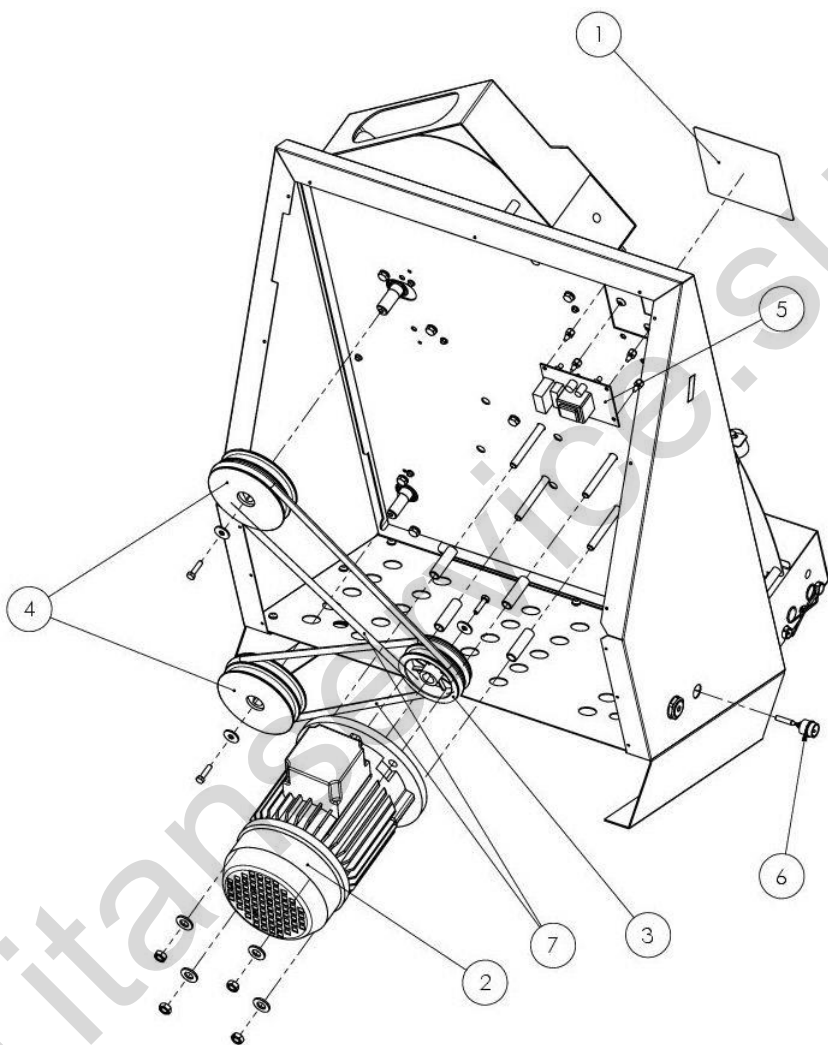


Figure 2

Figure 2 - Roll Mach 32A - P05RO24024

Figure 2 - Roll Mach 35A - P05RO24024

| Pos. | Code | Description | Q.ty |
|------|------------|----------------------------------|---------------------------|
| 1 | A93OL78014 | CONTROL UNIT LABEL | 1 |
| 2 | A87MR55002 | MOTOR 230V-50HZ 0,25kW-0,33HP B5 | 1 |
| 2 | A87MR55005 | MOTOR 110V-60HZ 0,25kW-0,33HP B5 | 1 110V-60Hz version |
| 3 | A90UL78002 | PLASTIC MOTOR PULLEY | 1 |
| 4 | A90UL78001 | PLASTIC REDUCTION PULLEY | 2 |
| 5 | A88CY78001 | 12V "2000" CONTROL PANEL | 1 |
| 6 | A87AZ71001 | Ø 15 PEDAL JACK WITH CABLE | OPTIONAL |
| 7 | A90KI78004 | Ø 8x560 BELT | 2 |

Figure 2 - Roll Mach 42A - P05RO24025

Figure 2 - Roll Mach 42TA - P05RP24015

Figure 2 - Roll Mach 45A - P05RO24023

Figure 2 - Roll Mach 45TA - P05RP24011

| Pos. | Code | Description | Q.ty |
|------|------------|---------------------------------|---------------------------|
| 1 | A93OL78014 | CONTROL UNIT LABEL | 1 |
| 2 | A87MR55003 | MOTOR 230V-50HZ 0,37kW-0,5HP B5 | 1 |
| 2 | A87MR55006 | MOTOR 110V-60HZ 0,37kW-0,5HP B5 | 1 110V-60Hz version |
| 3 | A90UL78002 | PLASTIC MOTOR PULLEY | 1 |
| 4 | A90UL78001 | PLASTIC REDUCTION PULLEY | 2 |
| 5 | A88CY78001 | 12V "2000" CONTROL PANEL | 1 |
| 6 | A87AZ71001 | Ø 15 PEDAL JACK WITH CABLE | OPTIONAL |
| 7 | A90KI78001 | Ø 8x784 BELT | 2 |

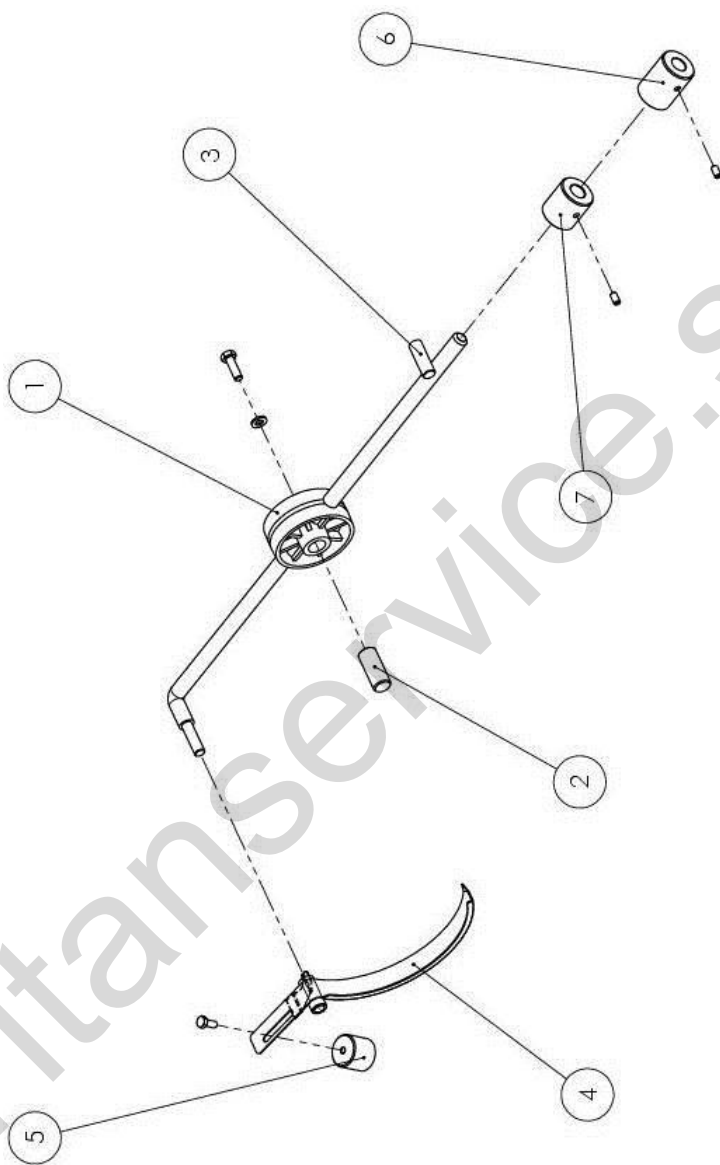


Figure 3

Figure 3 - Roll Mach 32A - P05RO24024

Figure 3 - Roll Mach 35A - P05RO24024

| Pos. | Code | Description | Q.ty |
|------|------------|--|------|
| 1 | A90BI54001 | RM32-35 SCALE UNIT | 1 |
| 2 | S69FS55001 | Ø 14x29,5 M6 STAINLESS STEEL PIN SCALE | 1 |
| 3 | S69FE54001 | Ø 10x30 RETAINER PIN BALANCE | 1 |
| 4 | S66BL54001 | RM 32 A LIFTING BEAM ASSEMBLY | 1 |
| 5 | S54PX54005 | Ø 25x17 COUNTERWEIGHT SCALE | 1 |
| 6 | S54PX54003 | Ø 28x38 COUNTERWEIGHT SCALE | 1 |
| 7 | / | / | / |

Figure 3 - Roll Mach 42A - P05RO24025

Figure 3 - Roll Mach 42TA - P05RP24015

Figure 3 - Roll Mach 45A - P05RO24023

Figure 3 - Roll Mach 45TA - P05RP24011

| Pos. | Code | Description | Q.ty |
|------|------------|---|------|
| 1 | A90BI54002 | RM42-45 SCALE UNIT | 1 |
| 2 | S69FS55001 | Ø 14x29,5 M6 STAINLESS STEEL PIN SCALE | |
| 3 | S69FE54001 | Ø 10x30 RETAINER PIN BALANCE | 1 |
| 4 | S66BL54002 | RM 42 A LIFTING BEAM ASSEMBLY | 1 |
| 5 | S79BL54001 | Ø 25x23 COUNTERWEIGHT SCALE | 1 |
| 6 | S54PX54003 | Ø 28x38 COUNTERWEIGHT SCALE | 1 |
| 7 | S54PX54004 | Ø 28x38 P40-P40A-P35A COUNTERWEIGHT SCALE | 1 |

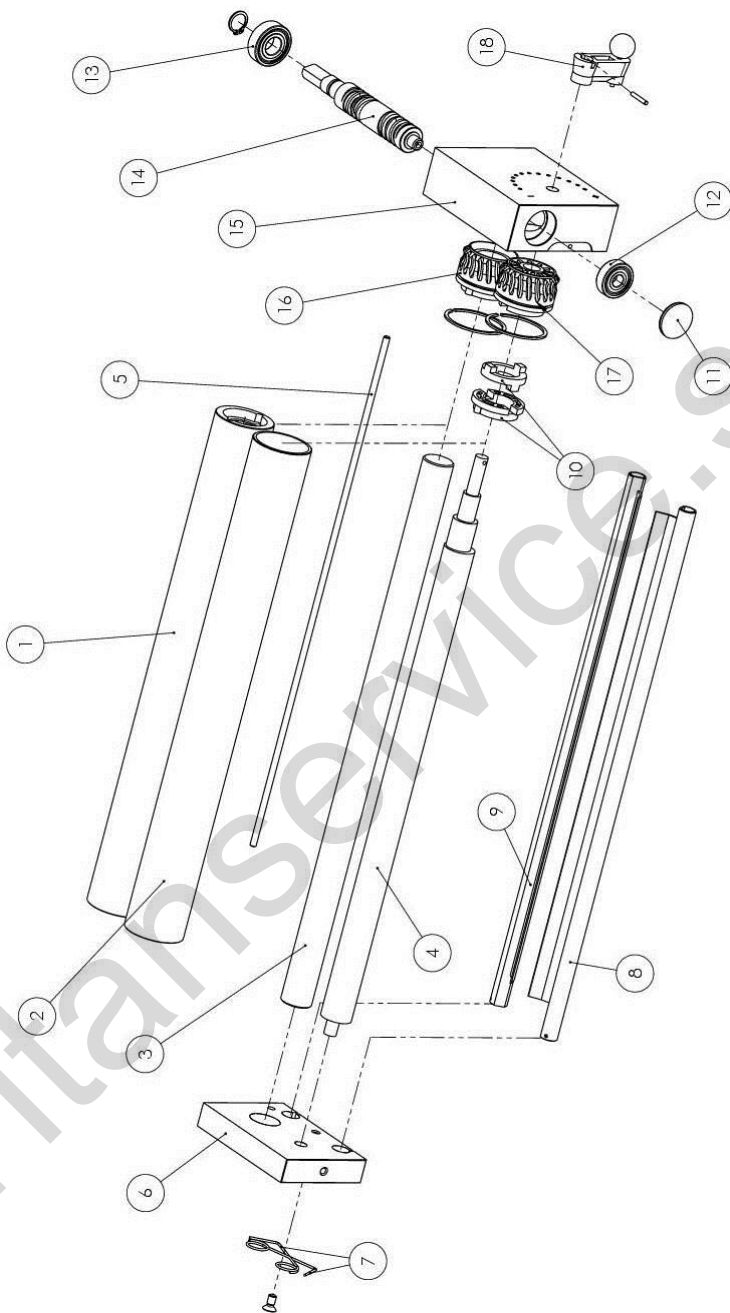


Figure 4 - Lower roller unit

Figure 4 - Lower roller unit S51RL54027 RM32A

| Pos. | Code | Description | Q.ty |
|------|------------|---|------|
| 1 | S75CD54009 | RM32A LOWER CYLINDRICAL ROLLER | |
| 2 | S75EC54009 | RM32A LOWER ECCENTRIC ROLLER | 1 |
| 3 | S63CD54006 | RM32A LOWER CYLINDRICAL SHAFT | 1 |
| 4 | S63EC54006 | RM32A LOWER ECCENTRIC SHAFT | 1 |
| 5 | S61RL54005 | Ø 5x334 RM 32 STEEL ROD | 1 |
| 6 | S52IE54006 | RM LOWER SMALL SUPPORT | 1 |
| 7 | A86ME30003 | RM PIZZA DOUGH SCRAPER SPRING | 2 |
| 8 | S43RA54001 | RM 32A FRONT ALUMINUM PIZZA DOUGH SCRAPER | 1 |
| 9 | S43RA54002 | RM 32A BACK ALUMINUM PIZZA DOUGH SCRAPER | 1 |
| 10 | S51GN54005 | RM MALE/FEMALE GROUP JOINT | 1 |
| 11 | A90TP78003 | RM RED RAL 3020 CAP | 1 |
| 12 | A89CK78001 | 6200 ZZ BEARING | 1 |
| 13 | A89CK78002 | 6202 ZZ BEARING | 1 |
| 14 | S63TR54009 | RM CYLINDRICAL SCREW (ROLLS CENTER DISTANCE OF 50) | 1 |
| 15 | S52RD54010 | RM LOWER REDUCTION GEAR SUPPORT | 1 |
| 16 | A90IG78002 | RM CYLINDRICAL GEAR | 1 |
| 17 | A90IG78001 | RM ECCENTRIC GEAR | 1 |
| 18 | S51GN54001 | PIZZA DOUGH ROLL MACH THICKNESS ADJUSTMENT GROUP (RED COLOUR) | 1 |

Figure 4 - Lower roller unit S51RL54035 RM35A – M35

| Pos. | Code | Description | Q.ty |
|------|------------|---|------|
| 1 | S75CD54010 | RM35A LOWER CYLINDRICAL ROLLER | 1 |
| 2 | S75CD54011 | RM35A LOWER ECCENTRIC ROLLER | 1 |
| 3 | S63CD54007 | RM35A LOWER CYLINDRICAL SHAFT | 1 |
| 4 | S63EC54007 | RM35A LOWER ECCENTRIC SHAFT | 1 |
| 5 | S61RL54003 | Ø 5x363 RM 35 STEEL ROD | 1 |
| 6 | S52IE54006 | RM LOWER SMALL SUPPORT | 1 |
| 7 | A86ME30003 | RM PIZZA DOUGH SCRAPER SPRING | 2 |
| 8 | S43RA54005 | RM 35A FRONT ALUMINUM PIZZA DOUGH SCRAPER | 1 |
| 9 | S43RA54006 | RM 35A BACK ALUMINUM PIZZA DOUGH SCRAPER | 1 |
| 10 | S51GN54005 | RM MALE/FEMALE GROUP JOINT | 1 |
| 11 | A90TP78003 | RM RED RAL 3020 CAP | 1 |
| 12 | A89CK78001 | 6200 ZZ BEARING | 1 |
| 13 | A89CK78002 | 6202 ZZ BEARING | 1 |
| 14 | S63TR54009 | RM CYLINDRICAL SCREW (ROLLS CENTER DISTANCE OF 50) | 1 |
| 15 | S52RD54010 | RM LOWER REDUCTION GEAR SUPPORT | 1 |
| 16 | A90IG78002 | RM CYLINDRICAL GEAR | 1 |
| 17 | A90IG78001 | RM ECCENTRIC GEAR | 1 |
| 18 | S51GN54001 | PIZZA DOUGH ROLL MACH THICKNESS ADJUSTMENT GROUP (RED COLOUR) | 1 |

Figure 4 - Lower roller unit S51RL54031 RM42A - RM42TA – M42

| Pos. | Code | Description | Q.ty |
|------|------------|--|------|
| 1 | S75CD54008 | RM42A-42TA LOWER CYLINDRICAL ROLLER | 1 |
| 2 | S75EC54007 | RM42A-42TA LOWER ECCENTRIC ROLLER | 1 |
| 3 | S63CD54002 | RM42A-42TA LOWER CYLINDRICAL SHAFT | 1 |
| 4 | S63EC54004 | RM42A-42TA LOWER ECCENTRIC SHAFT | 1 |
| 5 | S61RL54003 | Ø 5x438 RM 42 STEEL ROD | 1 |
| 6 | S52IE54006 | RM LOWER SMALL SUPPORT | 1 |
| 7 | A86ME30003 | RM PIZZA DOUGH SCRAPER SPRING | 2 |
| 8 | S43RA54005 | RM42A-42TA FRONT ALUMINUM PIZZA DOUGH SCRAPER | 1 |
| 9 | S43RA54006 | RM 42A-42TA BACK ALUMINUM PIZZA DOUGH SCRAPER | 1 |
| 10 | S51GN54005 | RM MALE/FEMALE GROUP JOINT | 1 |
| 11 | A90TP78003 | RM RED RAL 3020 CAP | 1 |
| 12 | A89CK78001 | 6200 ZZ BEARING | 1 |
| 13 | A89CK78002 | 6202 ZZ BEARING | 1 |
| 14 | S63TR54009 | RM CYLINDRICAL SCREW (ROLLS CENTER DISTANCE OF 50) | 1 |
| 15 | S52RD54010 | RM LOWER REDUCTION GEAR SUPPORT | 1 |
| 16 | A90IG78002 | RM CYLINDRICAL GEAR | 1 |
| 17 | A90IG78001 | RM ECCENTRIC GEAR | 1 |
| 18 | S51GN54001 | PIZZA DOUGH ROLL MACH THICKNESS ADJUSTMENT GROUP (RED COLOUR) | 1 |

Figure 4 - Lower roller unit S51RL54011 RM45A - RM45TA

| Pos. | Code | Description | Q.ty |
|------|------------|--|------|
| 1 | S75CD54007 | RM45A-45TA LOWER CYLINDRICAL ROLLER | 1 |
| 2 | S75EC54008 | RM45A-45TA LOWER ECCENTRIC ROLLER | 1 |
| 3 | S63CD54004 | RM45A-45TA LOWER CYLINDRICAL SHAFT | 1 |
| 4 | S63EC54005 | RM45A-45TA LOWER ECCENTRIC SHAFT | 1 |
| 5 | S61RL54003 | Ø 5X510 RM45 STEEL ROD | 1 |
| 6 | S52IE54001 | RM LOWER SMALL SUPPORT | 1 |
| 7 | A86ME30003 | RM PIZZA DOUGH SCRAPER SPRING | 2 |
| 8 | S43RA54008 | RM45A-45TA FRONT ALUMINUM PIZZA DOUGH SCRAPER | 1 |
| 9 | S43RA54007 | RM 45A-45TA BACK ALUMINUM PIZZA DOUGH SCRAPER | 1 |
| 10 | S51GN54005 | RM MALE/FEMALE GROUP JOINT | 1 |
| 11 | A90TP78003 | RM RED RAL 3020 CAP | 1 |
| 12 | A89CK78001 | 6200 ZZ BEARING | 1 |
| 13 | A89CK78002 | 6202 ZZ BEARING | 1 |
| 14 | S63TR54010 | RM CYLINDRICAL SCREW (ROLLS CENTER DISTANCE OF 60) | 1 |
| 15 | S52RD54003 | RM LOWER REDUCTION GEAR SUPPORT | 1 |
| 16 | A90IG78002 | RM CYLINDRICAL GEAR | 1 |
| 17 | A90IG78001 | RM ECCENTRIC GEAR | 1 |
| 18 | S51GN54001 | PIZZA DOUGH ROLL MACH THICKNESS ADJUSTMENT GROUP (RED COLOUR) | 1 |

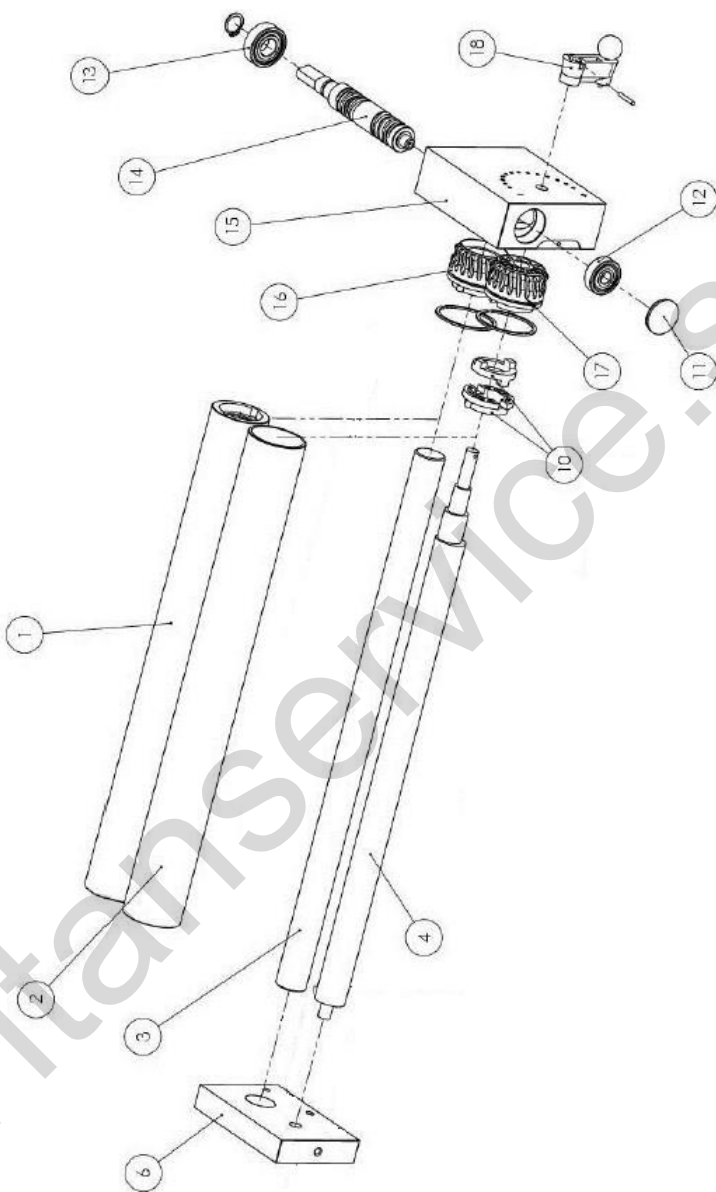


Figure 5 - Upper roller unit

Figure 5 - Upper roller unit S51RL54028 RM32A – RM35

| Pos. | Code | Description | Q.ty |
|------|------------|---|------|
| 1 | S75CD54001 | RM32A-35A UPPER CYLINDRICAL ROLLER | 1 |
| 2 | S75EC54001 | RM32A-35A UPPER ECCENTRIC ROLLER | 1 |
| 3 | S63CD54001 | RM32A-35A UPPER CYLINDRICAL SHAFT | 1 |
| 4 | S63EC54001 | RM32A-35A UPPER ECCENTRIC SHAFT | 1 |
| 6 | S52IE54006 | RM LOWER SMALL SUPPORT | 1 |
| 10 | S51GN54005 | RM MALE/FEMALE GROUP JOINT | 1 |
| 11 | A90TP78003 | RM RED RAL 3020 CAP | 1 |
| 12 | A89CK78001 | 6200 ZZ BEARING | 1 |
| 13 | A89CK78002 | 6202 ZZ BEARING | 1 |
| 14 | S63TR54009 | RM CYLINDRICAL SCREW (ROLLS CENTER DISTANCE OF 50) | 1 |
| 15 | S52RD54010 | RM LOWER REDUCTION GEAR SUPPORT | 1 |
| 16 | A90IG78002 | RM CYLINDRICAL GEAR | 1 |
| 17 | A90IG78001 | RM ECCENTRIC GEAR | 1 |
| 18 | S51GN54001 | PIZZA DOUGH ROLL MACH THICKNESS ADJUSTMENT GROUP (RED COLOUR) | 1 |

Figure 5 - Upper roller unit S51RL54032 RM42A – RM45A

| Pos. | Code | Description | Q.ty |
|------|------------|---|------|
| 1 | S75CD54003 | RM42A-45A UPPER CYLINDRICAL ROLLER | 1 |
| 2 | S75EC54003 | RM42A-45A UPPER ECCENTRIC ROLLER | 1 |
| 3 | S63CD54005 | RM42A-45A UPPER CYLINDRICAL SHAFT | 1 |
| 4 | S63EC54002 | RM42A-45A UPPER ECCENTRIC SHAFT | 1 |
| 6 | S52IE54006 | RM LOWER SMALL SUPPORT | 1 |
| 10 | S51GN54005 | RM MALE/FEMALE GROUP JOINT | 1 |
| 11 | A90TP78003 | RM RED RAL 3020 CAP | 1 |
| 12 | A89CK78001 | 6200 ZZ BEARING | 1 |
| 13 | A89CK78002 | 6202 ZZ BEARING | 1 |
| 14 | S63TR54009 | RM CYLINDRICAL SCREW (ROLLS CENTER DISTANCE OF 50) | 1 |
| 15 | S52RD54010 | RM LOWER REDUCTION GEAR SUPPORT | 1 |
| 16 | A90IG78002 | RM CYLINDRICAL GEAR | 1 |
| 17 | A90IG78001 | RM ECCENTRIC GEAR | 1 |
| 18 | S51GN54001 | PIZZA DOUGH ROLL MACH THICKNESS ADJUSTMENT GROUP (RED COLOUR) | 1 |

Figure 5 - Upper roller unit S51RL54009 RM42TA – RM45TA

| Pos. | Code | Description | Q.ty |
|------|------------|---|------|
| 1 | S75CD54004 | RM42TA-45TA UPPER CYLINDRICAL ROLLER | 1 |
| 2 | S75EC54004 | RM42TA-45TA UPPER ECCENTRIC ROLLER | 1 |
| 3 | S63CD54003 | RM42TA-45TA UPPER CYLINDRICAL SHAFT | 1 |
| 4 | S63EC54003 | RM42TA-45TA UPPER ECCENTRIC SHAFT | 1 |
| 6 | S52IE54006 | RM LOWER SMALL SUPPORT | 1 |
| 10 | S51GN54005 | RM MALE/FEMALE GROUP JOINT | 1 |
| 11 | A90TP78003 | RM RED RAL 3020 CAP | 1 |
| 12 | A89CK78001 | 6200 ZZ BEARING | 1 |
| 13 | A89CK78002 | 6202 ZZ BEARING | 1 |
| 14 | S63TR54009 | RM CYLINDRICAL SCREW (ROLLS CENTER DISTANCE OF 50) | 1 |
| 15 | S52RD54010 | RM LOWER REDUCTION GEAR SUPPORT | 1 |
| 16 | A90IG78002 | RM CYLINDRICAL GEAR | 1 |
| 17 | A90IG78001 | RM ECCENTRIC GEAR | 1 |
| 18 | S51GN54001 | PIZZA DOUGH ROLL MACH THICKNESS ADJUSTMENT GROUP (RED COLOUR) | 1 |

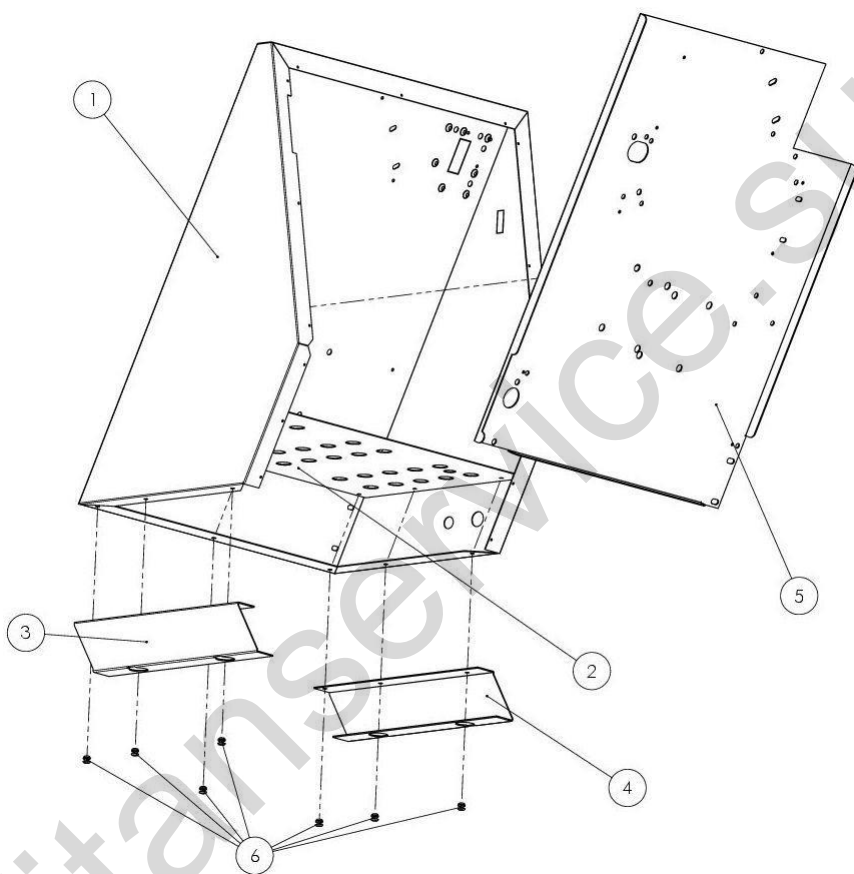


Figure 6

Figure 6 - Enclosure RM32A P05RO24024

| Pos. | Code | Description | Q.ty |
|------|------------|--|------|
| 1 | S39SC54035 | RM32A EMCLOSURE | 1 |
| 2 | S31DL54018 | RM32A GALVANISED SOLE | 1 |
| 3 | S49PA54016 | RM32A RIGHT FOOT | 1 |
| 4 | S49PA54018 | RM32A LEFT FOOT | 1 |
| 5 | S67DL54021 | RM32A SUBPLATE | 1 |
| 6 | / | Stainless steel rivet 4.8x10 roundheaded | 7 |

Figure 6 - Enclosure RM42A P05RO24025

| Pos. | Code | Description | Q.ty |
|------|------------|--|------|
| 1 | S39SC54033 | RM42A EMCLOSURE | 1 |
| 2 | S31DL54022 | RM42A-42TA GALVANISED SOLE | 1 |
| 3 | S49PA54016 | RM42A RIGHT FOOT | 1 |
| 4 | S49PA54018 | RM42A LEFT FOOT ROLL | 1 |
| 5 | S67DL54036 | RM42A-42TA SUBPLATE | 1 |
| 6 | / | Stainless steel rivet 4.8x10 roundheaded | 7 |

Figure 6 - Enclosure RM35A P05RO24021

| Pos. | Code | Description | Q.ty |
|-------------|-------------|--|-------------|
| 1 | S39SC54012 | RM35A EMCLOSURE | 1 |
| 2 | S31DL54004 | RM35A GALVANISED SOLE | 1 |
| 3 | S49PA54012 | RM35A RIGHT FOOT | 1 |
| 4 | S49PA54012 | RM35A LEFT FOOT | 1 |
| 5 | S67DL54007 | RM35A SUBPLATE | 1 |
| 6 | / | Stainless steel rivet 4.8x10 roundheaded | 7 |

Figure 6 - Enclosure RM45A P05RO24023

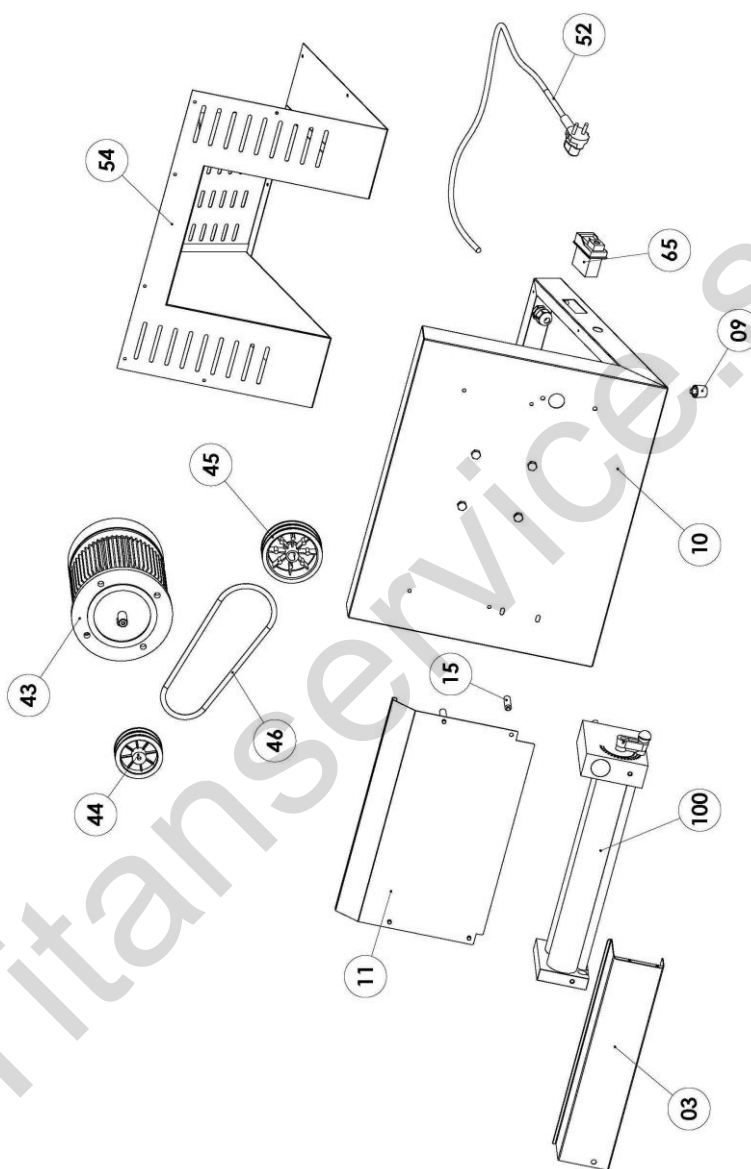
| Pos. | Code | Description | Q.ty |
|-------------|-------------|--|-------------|
| 1 | S39SC54021 | RM45A EMCLOSURE | 1 |
| 2 | S31DL54006 | RM45A-45TA GALVANISED SOLE | 1 |
| 3 | S49PA54008 | RM45A RIGHT FOOT | 1 |
| 4 | S49PA54008 | RM45A LEFT FOOT | 1 |
| 5 | S67DL54017 | RM45A SUBPLATE | 1 |
| 6 | / | Stainless steel rivet 4.8x10 roundheaded | 7 |

Figure 6 - Enclosure RM42TA P05RP24015

| Pos. | Code | Description | Q.ty |
|-------------|-------------|--|-------------|
| 1 | S39SC54031 | RM42TA ENCLOSURE | 1 |
| 2 | S31DL54022 | RM42A-42TA GALVANISED SOLE | 1 |
| 3 | S49PA54016 | RM42TA RIGHT FOOT | 1 |
| 4 | S49PA54018 | RM42TA LEFT FOOT | 1 |
| 5 | S67DL54036 | RM42A-RM42TA SUBPLATE | 1 |
| 6 | / | Stainless steel rivet 4.8x10 roundheaded | 7 |

Figure 6 - Enclosure RM45TA P05RP24011

| Pos. | Code | Description | Q.ty |
|-------------|-------------|--|-------------|
| 1 | S39SC54019 | RM45TA ENCLOSURE | 1 |
| 2 | S31DL54006 | RM45A-45TA GALVANISED SOLE | 1 |
| 3 | S49PA54008 | RM45TA RIGHT FOOT | 1 |
| 4 | S49PA54008 | RM45TA LEFT FOOT | 1 |
| 5 | S67DL54014 | RM45A-RM45TA SUBPLATE | 1 |
| 6 | / | Stainless steel rivet 4.8x10 roundheaded | 7 |



M35A – M42A

M35A

| Pos. | Code | Description |
|------|------------|---|
| 03 | S61IE54022 | RM35A-M35 REAR GUARD |
| 09 | A90XP78001 | BLACK CORNER FOOT RIVET |
| 10 | S39SC54010 | M35 STEEL ENCLOSURE |
| 11 | S47MO54003 | M35 STEEL SLIDE |
| 15 | S56SR54001 | Ø 10x37 RM UPPER SPACER |
| 43 | A87MR55002 | MOTOR 230V-50HZ 0,25kW-0,33HP B5 |
| 43 | A87MR55005 | MOTOR 110V-60HZ 0,25kW-0,33HP B5 (110V version) |
| 44 | A90UL78002 | PLASTIC MOTOR PULLEY |
| 45 | A90UL78001 | PLASTIC REDUCTION PULLEY |
| 46 | A90KI78004 | Ø 8x560 BELT |
| 52 | A87CX64001 | FEED CABLE H05VV-F 3X0,75 |
| 54 | S66CQ54004 | M35 MOTOR CASING ASSEMBLY |
| 65 | A96ZN00083 | KLD-28A START/STOP GREEN/RED BUTTON |
| 100 | S51RL54044 | M35 LOWER ROLLER UNIT |

M42A

| Pos. | Code | Description |
|------|------------|--|
| 03 | S61IE54020 | RM 42 A Release 2012 REAR GUARD |
| 09 | A90XP78001 | BLACK CORNER FOOT RIVET 18mm |
| 10 | S39SC54023 | M42 STEEL ENCLOSURE |
| 11 | S47MO54001 | M42 STEEL SLIDE |
| 15 | S56SR54001 | Ø 10x37 RM UPPER SPACER |
| 43 | A87MR55003 | MOTOR 230V-50HZ 0,37kW-0,5HP B5 |
| 43 | A87MR55006 | MOTOR 110V-60HZ 0,37kW-0,5HP B5 (110V version) |
| 44 | A90UL78002 | PLASTIC MOTOR PULLEY |
| 45 | A90UL78001 | PLASTIC REDUCTION PULLEY |
| 46 | A90KI78002 | Ø 8x680 BELT |
| 52 | A87CX64001 | FEED CABLE H05VV-F 3X0,75 |
| 54 | S66CQ54001 | M42 MOTOR CASING ASSEMBLY |
| 65 | A96ZN00083 | KLD-28A START/STOP GREEN/RED BUTTON |
| 100 | S51RL54045 | M42 LOWER ROLLER UNIT |

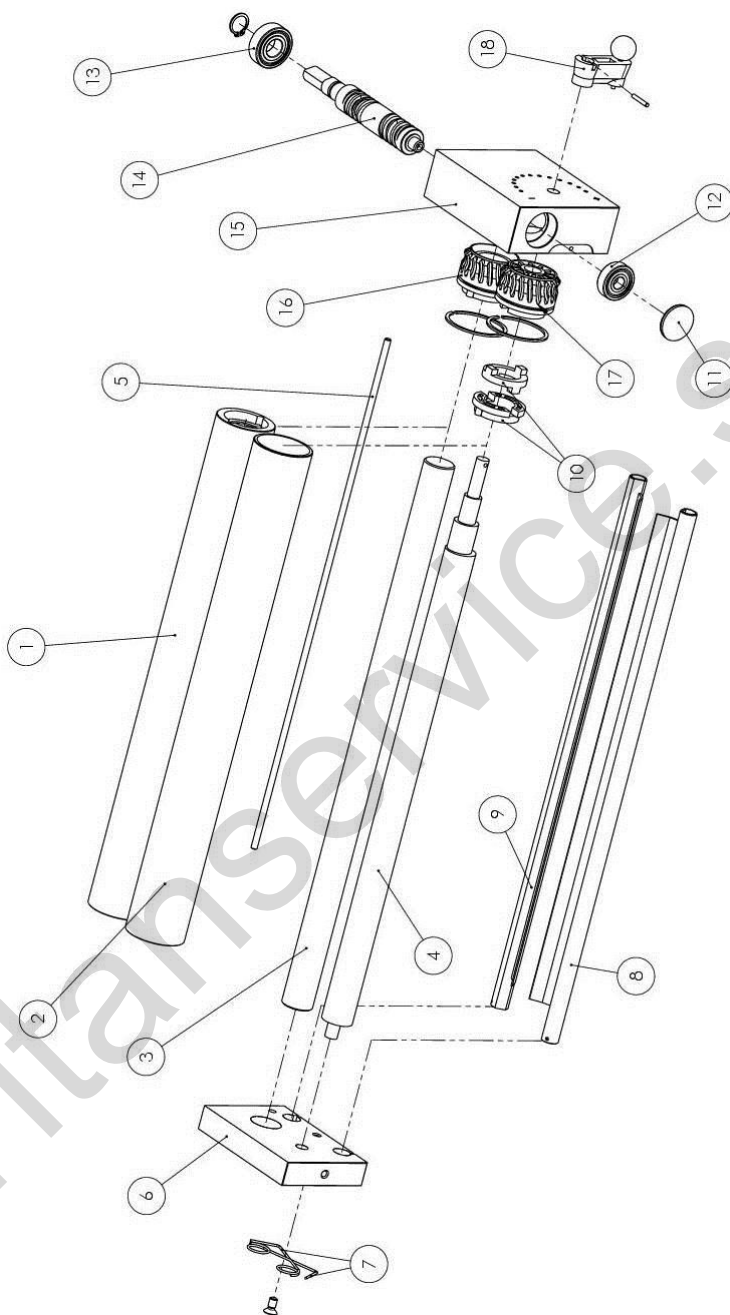


Figure 7 – Roller unit M35 – M42

Figure 7 - Roller unit S51RL54044 M35

| Pos. | Code | Description | Q.ty |
|------|------------|---|------|
| 1 | S75CD54010 | M35A LOWER CYLINDRICAL ROLLER | 1 |
| 2 | S75CD54011 | M35A LOWER ECCENTRIC ROLLER | 1 |
| 3 | S63CD54007 | M35A LOWER CYLINDRICAL SHAFT | 1 |
| 4 | S63EC54007 | M35A LOWER ECCENTRIC SHAFT | 1 |
| 5 | S61RL54003 | Ø 5x363 RM 35 STEEL ROD | 1 |
| 6 | S52IE54006 | RM LOWER SMALL SUPPORT | 1 |
| 7 | A86ME30003 | RM PIZZA DOUGH SCRAPER SPRING | 2 |
| 8 | S43RA54005 | RM 35A FRONT ALUMINUM PIZZA DOUGH SCRAPER | 1 |
| 9 | S43RA54006 | RM 35A BACK ALUMINUM PIZZA DOUGH SCRAPER | 1 |
| 10 | S51GN54005 | RM MALE/FEMALE GROUP JOINT | 1 |
| 11 | A90TP78003 | RM RED RAL 3020 CAP | 1 |
| 12 | A89CK78001 | 6200 ZZ BEARING | 1 |
| 13 | A89CK78002 | 6202 ZZ BEARING | 1 |
| 14 | S63TR54009 | RM CYLINDRICAL SCREW (ROLLS CENTER DISTANCE OF 50) | 1 |
| 15 | S52RD54010 | RM LOWER REDUCTION GEAR SUPPORT | 1 |
| 16 | A90IG78002 | RM CYLINDRICAL GEAR | 1 |
| 17 | A90IG78001 | RM ECCENTRIC GEAR | 1 |
| 18 | S51GN54001 | PIZZA DOUGH ROLL MACH THICKNESS ADJUSTMENT GROUP (RED COLOUR) | 1 |

Figure 7 - Roller unit S51RL54045 M42

| Pos. | Code | Description | Q.ty |
|------|------------|---|------|
| 1 | S75CD54008 | M42A LOWER CYLINDRICAL ROLLER | 1 |
| 2 | S75EC54007 | M42A LOWER ECCENTRIC ROLLER | 1 |
| 3 | S63CD54002 | M42A LOWER CYLINDRICAL SHAFT | 1 |
| 4 | S63EC54004 | M42 LOWER ECCENTRIC SHAFT | 1 |
| 5 | S61RL54003 | Ø 5x438 RM 42 STEEL ROD | 1 |
| 6 | S52IE54006 | RM LOWER SMALL SUPPORT | 1 |
| 7 | A86ME30003 | RM PIZZA DOUGH SCRAPER SPRING | 2 |
| 8 | S43RA54005 | RM42A-42TA FRONT ALUMINUM PIZZA DOUGH SCRAPER | 1 |
| 9 | S43RA54006 | RM 42A-42TA BACK ALUMINUM PIZZA DOUGH SCRAPER | 1 |
| 10 | S51GN54005 | RM MALE/FEMALE GROUP JOINT | 1 |
| 11 | A90TP78003 | RM RED RAL 3020 CAP | 1 |
| 12 | A89CK78001 | 6200 ZZ BEARING | 1 |
| 13 | A89CK78002 | 6202 ZZ BEARING | 1 |
| 14 | S63TR54009 | RM CYLINDRICAL SCREW (ROLLS CENTER DISTANCE OF 50) | 1 |
| 15 | S52RD54010 | RM LOWER REDUCTION GEAR SUPPORT | 1 |
| 16 | A90IG78002 | RM CYLINDRICAL GEAR | 1 |
| 17 | A90IG78001 | RM ECCENTRIC GEAR | 1 |
| 18 | S51GN54001 | PIZZA DOUGH ROLL MACH THICKNESS ADJUSTMENT GROUP (RED COLOUR) | 1 |

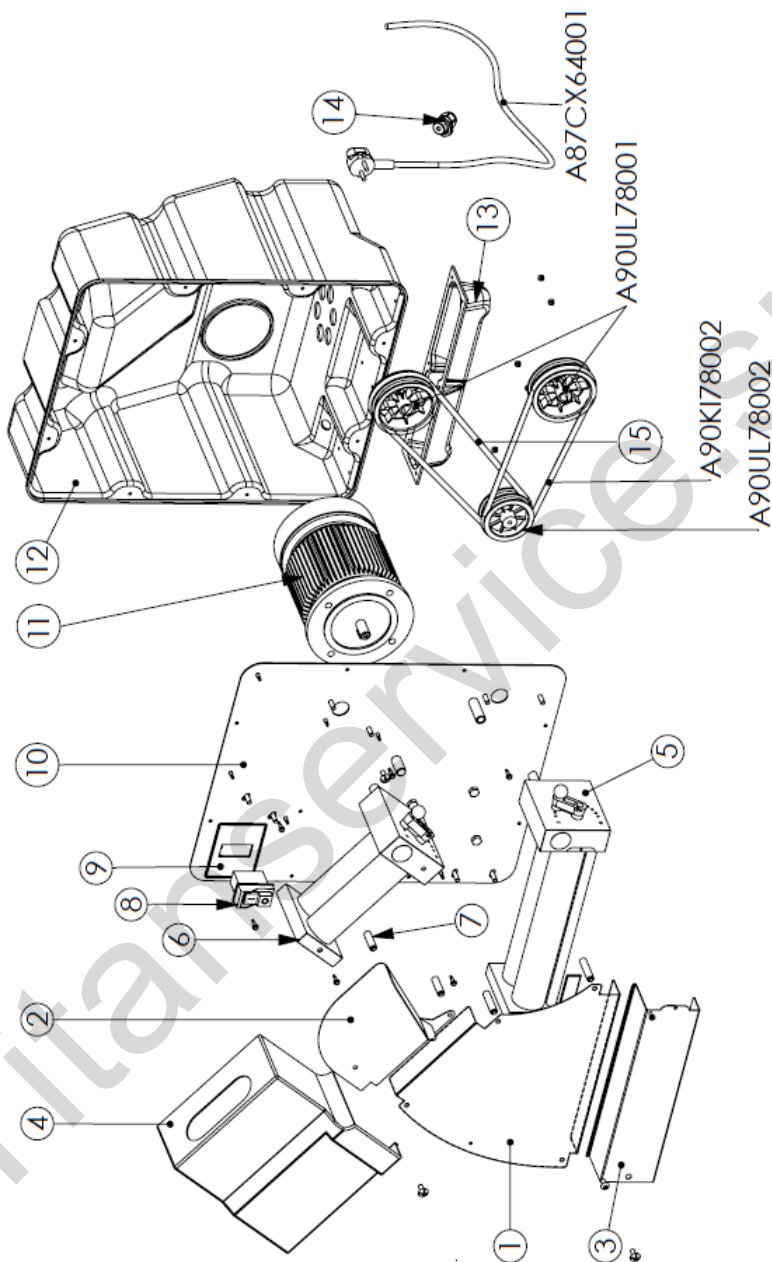


Figure 8 – RM30P – RM40P

Figure 8 – Roll-Mach RM30P – P05RO25015

| Pos. | Code | Description | Q.ty |
|-------------|-------------|--|-------------|
| 1 | S47IE54034 | RM30P LOWER STEEL SLIDE | 1 |
| 2 | S47SR54019 | RM30P UPPER STEEL SLIDE | 1 |
| 3 | S61IE54034 | RM30P LOWER GUARD | 1 |
| 4 | A90SU78019 | RM30P UPPER GUARD | 1 |
| 5 | S51RL54003 | RM30P LOWER ROLLER UNIT | 1 |
| 6 | S51RL54001 | RM30P UPPER ROLLER UNIT | 1 |
| 7 | S56SR54001 | Ø 10x37 ROLL MACH UPPER SPACER | 1 |
| 8 | A96ZN00083 | KLD-28A START/STOP GREEN/RED BUTTON | 1 |
| 9 | A93OL78002 | CONTROL UNIT LABEL | 1 |
| 10 | S41SC54006 | RM30P INOX PLATE | 1 |
| 11 | A87MR55002 | MOTOR 230V-50HZ 0,25kW-0,33HP B5 | 1 |
| 12 | A90FF78005 | RM30P GREY PLASTIC BOX RAL7037 | 1 |
| 13 | A90FF78007 | RM30P PLASTIC FEET | 1 |
| 14 | A86EL46002 | CABLE FASTENER | 1 |
| 15 | A87CX64001 | FEED CABLE H05VV-F 3X0,75 | 1 |

Figure 8 – Roll-Mach RM40P – P05RO25017

| Pos. | Code | Description | Q.ty |
|-------------|-------------|--|-------------|
| 1 | S47IE54007 | RM40P LOWER STEEL SLIDE | 1 |
| 2 | S47SR54003 | RM40P UPPER STEEL SLIDE | 1 |
| 3 | S61IE54003 | RM40P LOWER GUARD | 1 |
| 4 | A90SU78020 | RM40P UPPER GUARD | 1 |
| 5 | S51RL54031 | RM40P LOWER ROLLER UNIT | 1 |
| 6 | S51RL54032 | RM40P UPPER ROLLER UNIT | 1 |
| 7 | S56SR54001 | Ø 10x37 ROLL MACH UPPER SPACER | 1 |
| 8 | A96ZN00083 | KLD-28A START/STOP GREEN/RED BUTTON | 1 |
| 9 | A93OL78002 | CONTROL UNIT LABEL | 1 |
| 10 | S41SC54007 | RM40P INOX PLATE | 1 |
| 11 | A87MR55003 | MOTOR 230V-50HZ 0,37kW-0,5HP B5 | 1 |
| 12 | A90FF78006 | RM40P GREY PLASTIC BOX RAL7037 | 1 |
| 13 | A90FF78008 | RM40P PLASTIC FEET | 1 |
| 14 | A86EL46002 | CABLE FASTENER | 1 |
| 15 | A87CX64001 | FEED CABLE H05VV-F 3X0,75 | 1 |

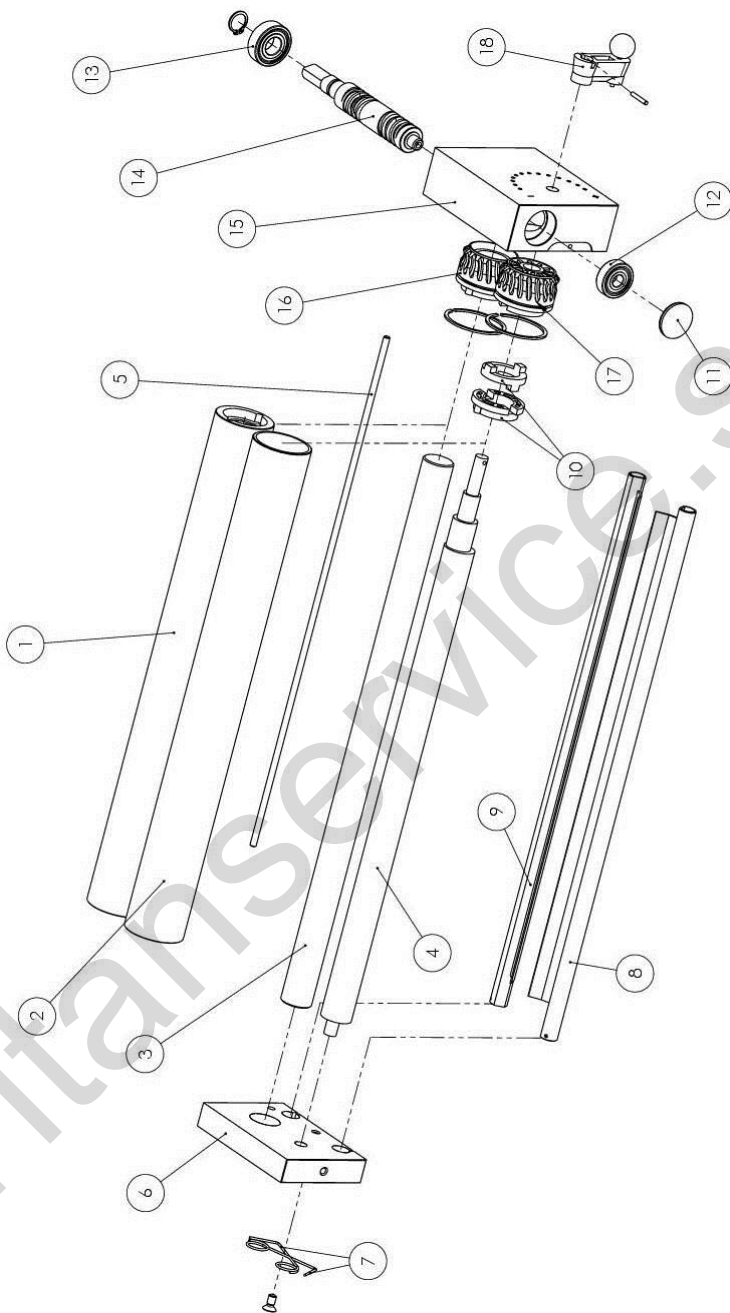


Figure 9 - Lower roller unit

Figure 9 - Lower roller unit S51RL54003 RM30P

| Pos. | Code | Description | Q.ty |
|------|------------|--|------|
| 1 | S75CD54005 | RM30P LOWER CYLINDRICAL ROLLER | |
| 2 | S75EC54005 | RM30P LOWER ECCENTRIC ROLLER | 1 |
| 3 | S63CD54003 | RM30P LOWER CYLINDRICAL SHAFT | 1 |
| 4 | S63EC54003 | RM30P LOWER ECCENTRIC SHAFT | 1 |
| 5 | S61RL54001 | Ø 5x315 RM30P STEEL ROD | 1 |
| 6 | S52SR54001 | RM30P LOWER SMALL SUPPORT | 1 |
| 7 | A86ME30003 | RM PIZZA DOUGH SCRAPER SPRING | 2 |
| 8 | S43RA54004 | RM30P FRONT ALUMINUM PIZZA DOUGH SCRAPER | 1 |
| 9 | S43RA54003 | RM30P BACK ALUMINUM PIZZA DOUGH SCRAPER | 1 |
| 10 | S51GN54005 | RM MALE/FEMALE GROUP JOINT | 1 |
| 11 | A90TP78003 | RM RED RAL 3020 CAP | 1 |
| 12 | A89CK78001 | 6200 ZZ BEARING | 1 |
| 13 | A89CK78002 | 6202 ZZ BEARING | 1 |
| 14 | S63TR54009 | RM CYLINDRICAL SCREW (ROLLS CENTER DISTANCE OF 50) | 1 |
| 15 | S52RD54001 | RM30P LOWER REDUCTION GEAR SUPPORT | 1 |
| 16 | A90IG78002 | RM CYLINDRICAL GEAR | 1 |
| 17 | A90IG78001 | RM ECCENTRIC GEAR | 1 |
| 18 | S51GN54001 | PIZZA DOUGH ROLL MACH THICKNESS ADJUSTMENT GROUP (RED COLOUR) | 1 |

Figure 4 - Lower roller unit S51RL54031 RM40P

| Pos. | Code | Description | Q.ty |
|------|------------|--|------|
| 1 | S75CD54008 | RM42A-42TA LOWER CYLINDRICAL ROLLER | 1 |
| 2 | S75EC54007 | RM42A-42TA LOWER ECCENTRIC ROLLER | 1 |
| 3 | S63CD54002 | RM42A-42TA LOWER CYLINDRICAL SHAFT | 1 |
| 4 | S63EC54004 | RM42A-42TA LOWER ECCENTRIC SHAFT | 1 |
| 5 | S61RL54003 | Ø 5x438 RM 42 STEEL ROD | 1 |
| 6 | S52IE54006 | RM LOWER SMALL SUPPORT | 1 |
| 7 | A86ME30003 | RM PIZZA DOUGH SCRAPER SPRING | 2 |
| 8 | S43RA54005 | RM42A-42TA FRONT ALUMINUM PIZZA DOUGH SCRAPER | 1 |
| 9 | S43RA54006 | RM 42A-42TA BACK ALUMINUM PIZZA DOUGH SCRAPER | 1 |
| 10 | S51GN54005 | RM MALE/FEMALE GROUP JOINT | 1 |
| 11 | A90TP78003 | RM RED RAL 3020 CAP | 1 |
| 12 | A89CK78001 | 6200 ZZ BEARING | 1 |
| 13 | A89CK78002 | 6202 ZZ BEARING | 1 |
| 14 | S63TR54009 | RM CYLINDRICAL SCREW (ROLLS CENTER DISTANCE OF 50) | 1 |
| 15 | S52RD54010 | RM LOWER REDUCTION GEAR SUPPORT | 1 |
| 16 | A90IG78002 | RM CYLINDRICAL GEAR | 1 |
| 17 | A90IG78001 | RM ECCENTRIC GEAR | 1 |
| 18 | S51GN54001 | PIZZA DOUGH ROLL MACH THICKNESS ADJUSTMENT GROUP (RED COLOUR) | 1 |

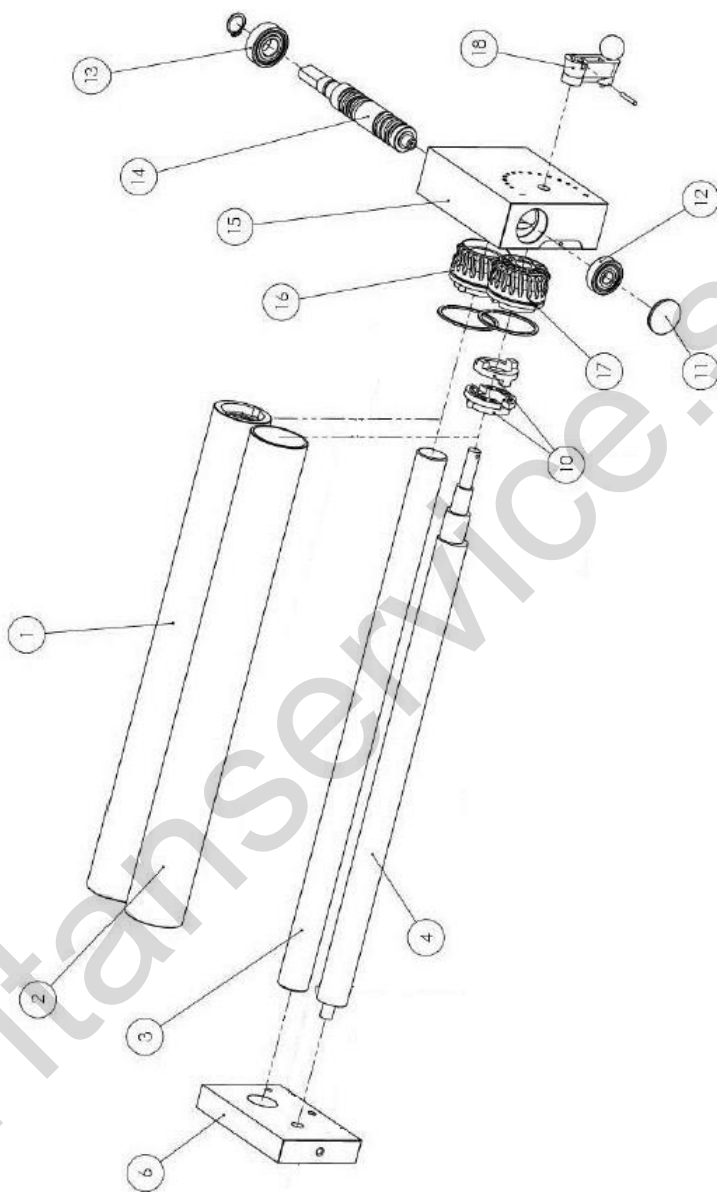


Figure 10 - Upper roller unit

Figure 10 - Upper roller unit S51RL54001 RM30P

| Pos. | Code | Description | Q.ty |
|------|------------|---|------|
| 1 | S75CD54001 | RM32A-35A UPPER CYLINDRICAL ROLLER | 1 |
| 2 | S75EC54001 | RM32A-35A UPPER ECCENTRIC ROLLER | 1 |
| 3 | S63CD54001 | RM32A-35A UPPER CYLINDRICAL SHAFT | 1 |
| 4 | S63EC54001 | RM32A-35A UPPER ECCENTRIC SHAFT | 1 |
| 6 | S52SR54001 | RM LOWER SMALL SUPPORT | 1 |
| 10 | S51GN54005 | RM MALE/FEMALE GROUP JOINT | 1 |
| 11 | A90TP78003 | RM RED RAL 3020 CAP | 1 |
| 12 | A89CK78001 | 6200 ZZ BEARING | 1 |
| 13 | A89CK78002 | 6202 ZZ BEARING | 1 |
| 14 | S63TR54009 | RM CYLINDRICAL SCREW (ROLLS CENTER DISTANCE OF 50) | 1 |
| 15 | S52RD54001 | RM LOWER REDUCTION GEAR SUPPORT | 1 |
| 16 | A90IG78002 | RM CYLINDRICAL GEAR | 1 |
| 17 | A90IG78001 | RM ECCENTRIC GEAR | 1 |
| 18 | S51GN54001 | PIZZA DOUGH ROLL MACH THICKNESS ADJUSTMENT GROUP (RED COLOUR) | 1 |

Figure 10 - Upper roller unit S51RL54032 RM40P

| Pos. | Code | Description | Q.ty |
|------|------------|---|------|
| 1 | S75CD54003 | RM42A-45A UPPER CYLINDRICAL ROLLER | 1 |
| 2 | S75EC54003 | RM42A-45A UPPER ECCENTRIC ROLLER | 1 |
| 3 | S63CD54005 | RM42A-45A UPPER CYLINDRICAL SHAFT | 1 |
| 4 | S63EC54002 | RM42A-45A UPPER ECCENTRIC SHAFT | 1 |
| 6 | S52IE54006 | RM LOWER SMALL SUPPORT | 1 |
| 10 | S51GN54005 | RM MALE/FEMALE GROUP JOINT | 1 |
| 11 | A90TP78003 | RM RED RAL 3020 CAP | 1 |
| 12 | A89CK78001 | 6200 ZZ BEARING | 1 |
| 13 | A89CK78002 | 6202 ZZ BEARING | 1 |
| 14 | S63TR54009 | RM CYLINDRICAL SCREW (ROLLS CENTER DISTANCE OF 50) | 1 |
| 15 | S52RD54010 | RM LOWER REDUCTION GEAR SUPPORT | 1 |
| 16 | A90IG78002 | RM CYLINDRICAL GEAR | 1 |
| 17 | A90IG78001 | RM ECCENTRIC GEAR | 1 |
| 18 | S51GN54001 | PIZZA DOUGH ROLL MACH THICKNESS ADJUSTMENT GROUP (RED COLOUR) | 1 |