



ED SERIES
Electric Designer

PARTS LIST

Toll Free Phone, (US & Canada): (800) 427-6668

Toll Free Fax, (US & Canada): (800) 361-7745

<http://www.garland-group.com>

Titanservice.su

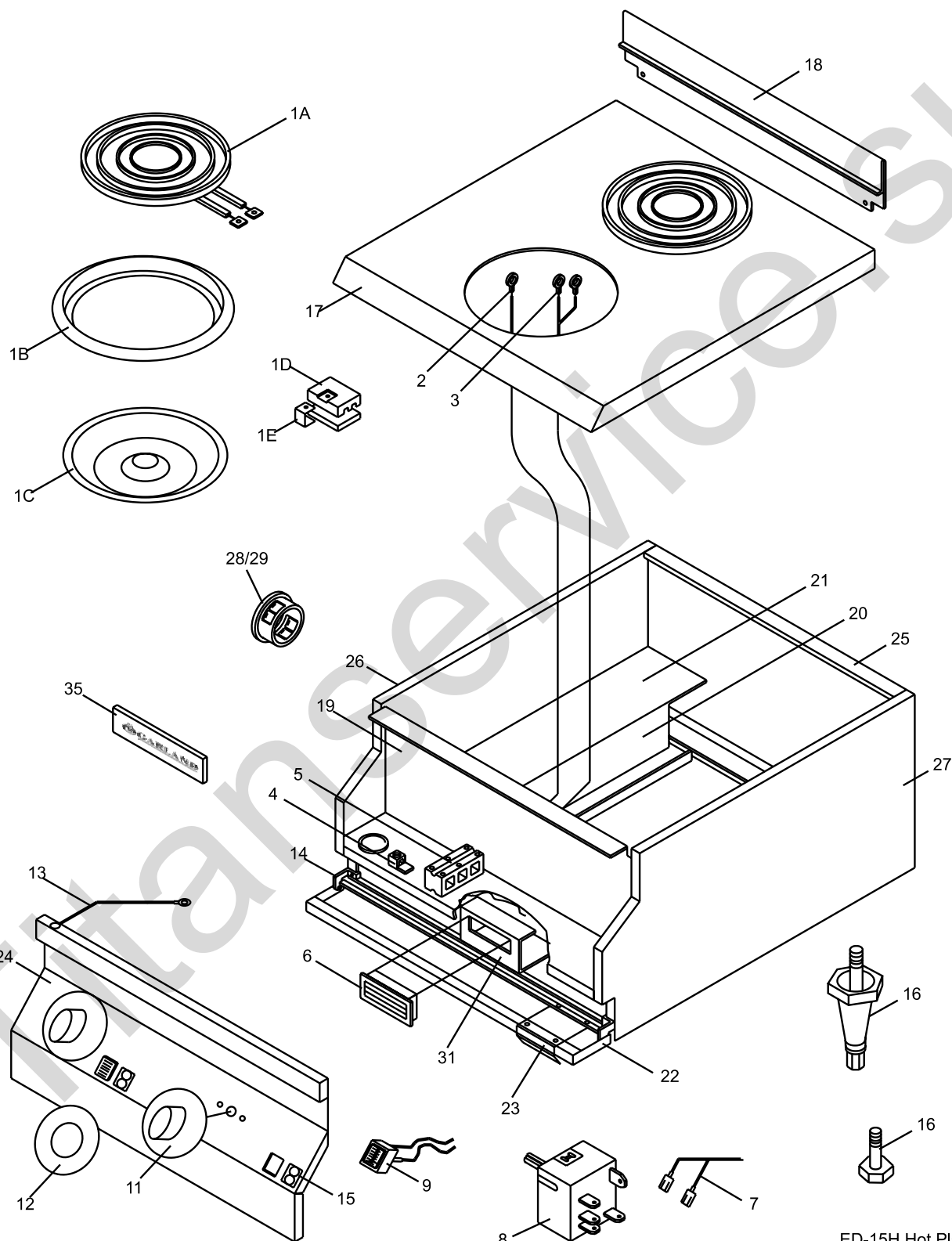


ED SERIES

Electric Designer

Contents:

HOT PLATE ED-15H	Page 4
HOT PLATES ED-15HSE, ED-15THSE & EDU-15HSE	Page 8
GRIDDLES ED/EDU-15G, ED/EDU-24G, ED/EDU-36G	Page 12
BROILER ED/EDU-15B, ED/EDU-30B, ED/EDU-42B	Page 16
FOOD WARMER ED/EDU-15W/ED-15WP	Page 20
ELECTRIC SUPER FRYER ED-15SF, ED-30SFT, EDU-18-36SF	Page 24
ELECTRIC FRYER ED-15-30F, EDU-18-36FT	Page 30
Revision History	Page 35



GARLAND PARTS IDENTIFICATION

HOT PLATE ED-15H

ED Series

ITEM	PART #	DESCRIPTION	MODEL ED-15H
			QTY
1A	2195000	8" Surface Element 208V (2.1Kw)	2
	2195001	8" Surface Element 240V (2.1Kw)	2
	2195002	8" Surface Element 220V (2.1Kw)	2
1B	2602399	8" Ring Assembly	2
1C	2195300	8" Pan Reflector	2
1D	2195800	Split Terminal Block (Small)	2
1E	2627700	Terminal Block Clip	2
2	2147703	Ground Wire	2
3	2148100	Element Wires Harness	1
4	G01500-1	Ground Terminal 55AMP	1
5	2147300	Terminal Block 3 Circuit	1
	2147302	Terminal Block 3 Circuit Export	1
6	078174-1	Magnetic Door Catch	1
7	2148000	Primary Wires	1
8	G03185-2	Infinite Switch-240 Volt	2
9	2138504	Pilot Green	2
11	2138700	Knob	2
12	2139000	Dial Insert	2
13	2147700	Ground Wire	1
14	2149400	Door Hinge Right Hand	1
	2149401	Door Hinge Left Hand	1
15	2150000	Element Identification Plate	2
16	F157	Bolt-3/8-16X1 1/16"	4
	078109-1	Plastic Leg (Optional)	4
17	2132699	Main Top Assembly	1
18	2168000	Back Splash to 12/07/95	1
	2385500	Back Splash from 12/07/95	1
19	2132798	Control Shield Assembly to 2/23/93	1
	2132799	Control Shield Assembly from 2/23/93 to 4/04/94	1
	2351899	Control Shield Assembly from 4/04/94	1
20	2149600	Wireway	1
21	2156500	Body Shield	1
22	2149299	Door Assembly Enamelled 15"	1
23	2149300	Door Pull	1
24	2137700	Control Panel to 4/04/94	1
	2349600	Control Panel from 4/04/94	1
25	2180900	Body Back & Bottom	1
	2180901	Body Back & Bottom S/S	1
26	2180699	Side Assembly LH - Black (Code 9402CG0180) to 02/21/94	1
	2180698	Side - Left Assembly S/S (Code 9402CG0180) to 02/21/94	1
	2349498	Body Side Assembly LH (Code 9402CG0181) from 02/21/94	1
	2349496	Body Side Assembly LH (Code 9402CG0181) from 02/21/94	1
* NOT ILLUSTRATED			
RECOMMENDED STOCK PARTS			

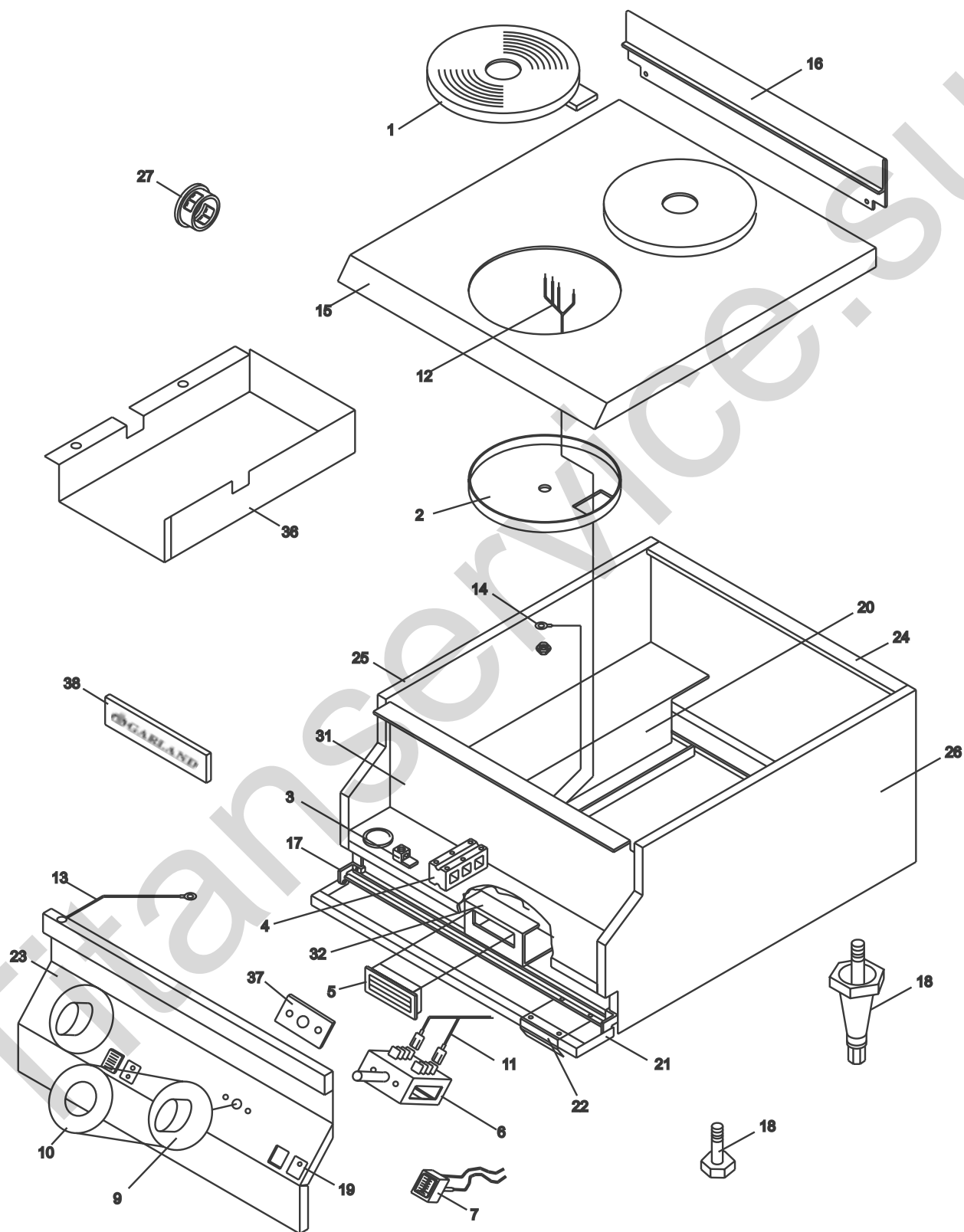
GARLAND PARTS IDENTIFICATION

HOT PLATE ED-15H

ED Series

ITEM	PART #	DESCRIPTION	MODEL ED-15H
			QTY
27	2180599	Side Assembly RH (Code 9402CG0180) to 02/21/94	1
	2180598	Side - Right Assembly S/S (Code 9402CG0180) to 02/21/94	1
	2349499	Body Side Assembly RH (Code 9402CG0181) from 02/21/94	1
	2349497	Body Side Assembly RH (Code 9402CG0181) from 02/21/94	1
28	G01487-8	Heyco Bushing 11/16 ID	1
29	G01487-5	Heyco Bushing 1-5/16 ID	1
30*	2174500	Joiner Tab	2
31	2139600	Magnet Mounting Bracket to 5/07/91	1
	2183500	Magnet Bracket from 5/07/91	1
32*	2149800	Access Panel	1
33*	2171400	Terminal Block Mounting Bracket	1
34*	2139700	Control Panel Clip	2
35	1902919	Garland Nameplate 4"	1
36*	2146100	Wiring Diagram (Domestic) ED-15H 208V	
37*	2146200	Wiring Diagram (Export) ED-15H 220V	
* NOT ILLUSTRATED			
RECOMMENDED STOCK PARTS			

Titanservice.su



GARLAND PARTS IDENTIFICATION
HOT PLATES ED-15HSE, ED-15THSE & EDU-15HSE

ITEM	PART #	DESCRIPTION	MODEL		
			QTY		
			ED-15HSE	ED-15THSE	EDU-15HSE
1	2590200	Sealed Element 208		2	
		Tim Hortons Only			
	2590201	Sealed Element 220		2	
		Tim Hortons Only			
	2590202	Sealed Element 240		2	
		Tim Hortons Only			
	2147100	Sealed Element 208	2		
2	2147101	Sealed Element 220	2		2
	2147102	Sealed Element 240	2		2
	2147200	Screening Sheet 237MM	2		2
3	2147201	Screening Sheet 180MM		2	
		Tim Hortons Only			
4	G01500-1	Ground Terminal 55AMP	1	1	1
5	2147300	Terminal Block 3 Circuit	1	1	
	2147302	Terminal Block 3 Circuit Export	1		1
6	078174-1	Magnetic Door Catch	1	1	1
7	2146900	6 Heat Switch	2	2	2
8	2138504	Pilot Green	2	2	2
9	2138700	Knob NLA Use 3043200	2	2	2
10	2139100	Dial Insert	2	2	2
11	2147800	Primary Wires Harness	1	1	1
12	2147900	Element Wires Harness	2	2	2
13	2147702	Ground Wire Rear	2	2	2
14	2147700	Ground Wire	1	1	1
15	2137399	Main Top Assembly	1		1
	2137398	Main Top Assembly		1	
16	2137398	Tim Hortons Only			
17	2168000	Back Splash to 12/07/95	1		1
	2385500	Back Splash from 12/07/95	1	1	1
18	2149400	Door Hinge Right Hand	1	1	1
	2149401	Door Hinge Left Hand	1	1	1
19	F157	Bolt-3/8-16X1 1/16"	4	4	4
	078109-1	Plastic Leg (Optional)	4	4	4
20	2150000	Element Identification Plate	2	2	2
21	2149600	Wireway	1	1	1
22	2149299	Door Assembly Enamelled 15"	1	1	1
23	2149300	Door Pull			
		Up to 3/06/00	1	1	1
24	2149301	Door Handle			
		From 3/06/00			
25	2137700	Control Panel to 4/04/94	1		
	2349600	Control Panel from 4/04/94	1	1	
26	2349601	Control Panel			1
	2180900	Body Back & Bottom	1	1	1
27	2180901	Body Back & Bottom S/S	1	1	1
28	2180699	Side Assembly LH - Black (Code 9402CG0180)	1	1	
		Up to 02/21/94			
29	2180698	Side - Left Assembly S/S (Code 9402CG0180)	1	1	
		Up to 02/21/94			
30	2349498	Body Side Assembly LH (Code 9402CG0181)	1	1	1
		From 02/21/94			
31	2349496	Body Side Assembly LH (Code 9402CG0181)	1	1	1
		From 02/21/94			

* NOT ILLUSTRATED

RECOMMENDED STOCK PARTS

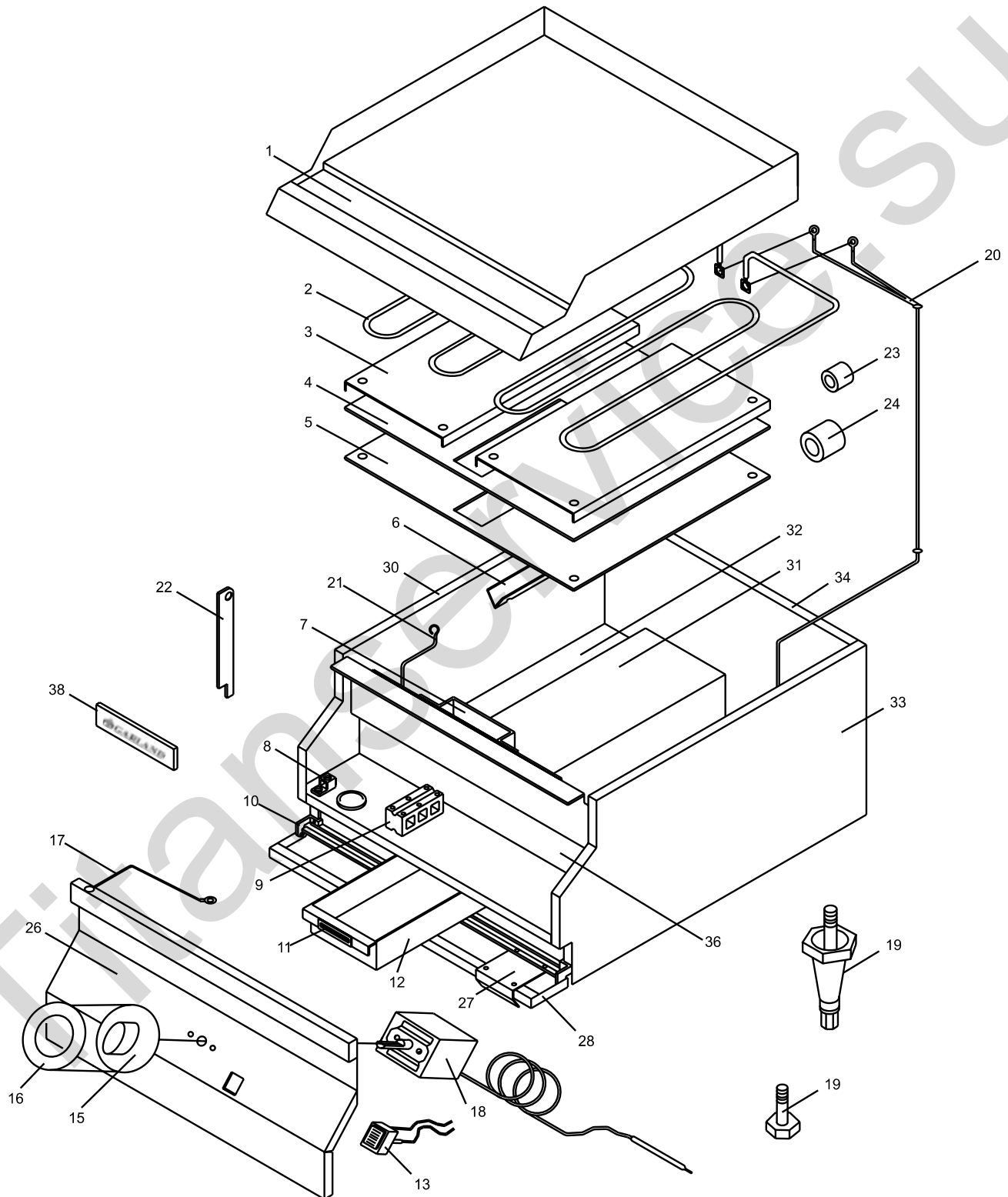
GARLAND PARTS IDENTIFICATION
HOT PLATES ED-15HSE, ED-15THSE & EDU-15HSE

ITEM	PART #	DESCRIPTION	MODEL		
			QTY		
			ED-15HSE	ED-15THSE	EDU-15HSE
26	2180599	Side Assembly RH (Code 9402CG0180)	1	1	
		Up to 02/21/94			
	2180598	Side - Right Assembly S/S (Code 9402CG0180)	1	1	
		Up to 02/21/94			
	2349499	Body Side Assembly RH (Code 9402CG0181)	1	1	1
		From 02/21/94			
	2349497	Body Side Assembly RH (Code 9402CG0181)	1	1	1
		From 02/21/94			
27	G01487-8	Heyco Bushing 11/16 ID	1	1	1
28*	G01487-5	Heyco Bushing 1-5/16 ID	1	1	1
29*	2139700	Control Panel Clip	2	2	2
30*	2174500	Joiner Tab	2	2	2
31	2132799	Control Shield Assembly from 2/23/93 to 4/04/94	1	1	
	2351899	Control Shield Assembly from 4/04/94	1	1	1
32	2139600	Magnet Mounting Bracket	1	1	1
		Up to 5/07/91			
	2183500	Magnet Bracket	1	1	1
		From 5/07/91			
33*	2149800	Access Panel	1	1	1
34*	2150200	Bottom Baffle	1	1	1
35*	2171400	Terminal Block Mounting Bracket	1	1	1
36	2608700	Wireway			1
37	2618500	Switch Seal			2
38	1902919	Garland Nameplate 4"	1	1	1
		Up to 10/01/01			
	3077101	Garland Nameplate			
		From 10/01/01			
39*	2618600	Side Seal			2
40*	2618700	Front Seal			1
41*	2146401	Wiring Diagram, EDU-15HSE-CE V			1
42*	2146300	Wiring Diagram ED-15HSE 208DOM	1		
43*	2146400	Wiring Diagram ED-15HSE 220EXP	1		
44*	2146301	Wiring Diagram		1	
		Tim Hortons Only			

* NOT ILLUSTRATED

RECOMMENDED STOCK PARTS

Titanservice.su



GARLAND PARTS IDENTIFICATION

GRIDDLES ED/EDU-15G, ED/EDU-24G, ED/EDU-36G

ED Series

ITEM	PART #	DESCRIPTION	MODEL		
			QTY		
			ED/EDU -15G	ED/EDU -24G	ED/EDU -36G
1	2142699	Griddle Assembly 15"	1		
	2220399	15" Grooved Griddle Assembly	1		
	2151097	Griddle Assembly 24"		1	
	2220499	24" Griddle Assy Fully Grooved		1	
	2220498	24" Griddle Assy 12" Grooved LT		1	
	2220497	24" Griddle Assy 12" Grooved RT		1	
	2151197	Griddle Assembly 36"			1
	2220599	36" Griddle Assy Fully Grooved			1
	2220597	36" Griddle Assy. 24" Grooved RT			1
	2220598	36" Griddle Assy. 24" Grooved LT			1
	2220595	36" Griddle Ass'y 12" Grooved LT			1
	2220596	36" Griddle Ass'y 12" Grooved RT			1
2	G01816-1	Element 208V,3350W	1	2	3
	G01816-2	Element 240V,3350W	1	2	3
	G01816-3	Element 220V,3350W	1	2	3
	G01816-4	Element 230 Volts	1	2	3
		EDU Models Only			
3	G01884-1-6	Element Clamp	2	4	6
4	079113-1	Fibrefrac 970J 1/8"	1	2	3
5	2142700	Element Cover	1	2	3
6	G01891-1-6	Bulb Clamp	1	2	3
7	2155499	Grease Chute Assembly	1	1	1
8	G01500-1	Ground Terminal 55AMP	1	1	1
9	2147300	Terminal Block 3 Circuit	1	1	1
	2147302	Terminal Block 3 Circuit Export	1	1	1
	2147301	Terminal Block-4 Circuit	1	1	1
10	2149400	Door Hinge Right Hand	1	1	1
	2149401	Door Hinge Left Hand	1	1	1
11	078174-1	Magnetic Door Catch	1	1	1
12	2142800	Grease Tray	1	1	1
13	2138500	Pilot Amber	1	2	3
15	2138700	Knob	1	2	3
16	2138800	Dial Insert Degrees F	1	2	3
	2138801	Dial Insert Degrees C	1	2	3
17	2147700	Ground Wire	1	1	1
18	G2674-1	Thermostat G1 150F TO 450F	1	2	3
19	F157	Bolt-3/8-16X1 1/16"	4	4	4
	078109-1	Plastic Leg (Optional)	4	4	4
20	2158900	Wire Harness	1		
	2158901	Wire Harness		1	
	2158902	Wire Harness			1
21	H87	14 Ga Nickel Wire Bare 651ALOY	1	1	1
* NOT ILLUSTRATED					
RECOMMENDED STOCK PARTS					

GARLAND PARTS IDENTIFICATION

GRIDDLES ED/EDU-15G, ED/EDU-24G, ED/EDU-36G

ED Series

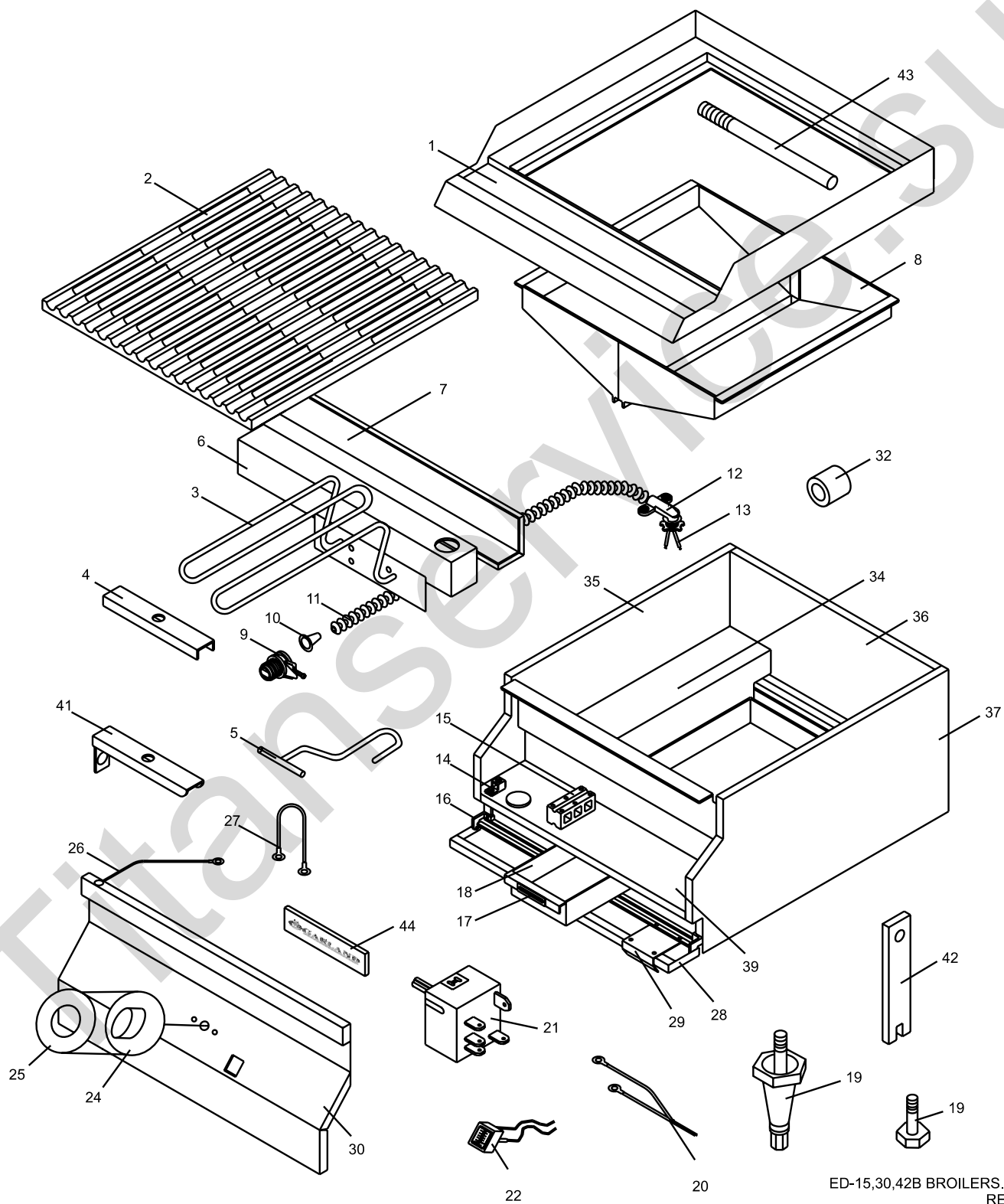
ITEM	PART #	DESCRIPTION	MODEL		
			QTY		
			ED/EDU -15G	ED/EDU -24G	ED/EDU -36G
22	G2402-3-5	Top Support Prop	1	1	1
23	G01487-8	Heyco Bushing 11/16 ID	1	2	3
24	G01487-5	Heyco Bushing 1-5/16 ID	1	1	1
25*	2139700	Control Panel Clip	2	2	3
26	2137900	Control Panel Up to 5/06/94	1		
	2349700	Control Panel 15" From 5/06/94	1		
	2138000	Control Panel Up to 2/23/94		1	
	2349800	Control Panel 24" From 2/23/94		1	
	2138300	Control Panel Up to 2/23/94			1
	2350100	Control Panel 36" From 2/23/94			1
27	2149300	Door Pull	1	1	1
28	2149299	Door Assembly Enamelled 15"	1		
	2149297	Door Assembly Enamelled 24"		1	
	2149295	Door Assembly Enamelled 36"			1
29*	2372800	Body Side Stiffener	2	2	2
30	2180699	Side Assembly LH - Black (Code 9402CG0180)	1	1	1
	2180698	Side - Left Assembly S/S (Code 9402CG0180)	1	1	1
	2349498	Body Side Assembly LH (Code 9402CG0181)	1	1	1
	2349496	Body Side Assembly LH (Code 9402CG0181)	1	1	1
31	2156300	Tray Cover	1	1	1
32	2149600	Wireway	1	1	1
33	2180599	Side Assembly RH (Code 9402CG0180)	1	1	1
	2180598	Side - Right Assembly S/S (Code 9402CG0180)	1	1	1
	2349499	Body Side Assembly RH (Code 9402CG0181)	1	1	1
	2349497	Body Side Assembly RH (Code 9402CG0181)	1	1	1
34	2180900	Body Back & Bottom	1		
	2180901	Body Back & Bottom S/S	1		
	2181100	Body Back & Bottom (24G)		1	
	2181101	Body Back & Bottom S/S		1	
	2181400	Body Back & Bottom (36G)			1
	2181401	Body Back & Bottom S/S			1
35*	2155700	Grease Tray Slide	2	2	2
36	2156199	Control Shield Assembly Up to 3/03/94	1		
	2352299	Control Shield Assembly From 3/03/94	1		
	2156999	Control Shield Assembly Up to 2/23/94		1	
* NOT ILLUSTRATED					
RECOMMENDED STOCK PARTS					

GARLAND PARTS IDENTIFICATION

GRIDDLES ED/EDU-15G, ED/EDU-24G, ED/EDU-36G

ED Series

ITEM	PART #	DESCRIPTION	MODEL		
			QTY		
			ED/EDU -15G	ED/EDU -24G	ED/EDU -36G
36 Cont.	2352499	Control Shield Assembly		1	
		From 2/23/94			
	2156699	Control Shield Assembly			1
		Up to 2/23/94			
	2352399	Control Shield Assembly			1
		From 2/23/94			
37*	2174500	Joiner Tab	2	2	2
38	1902919	Garland Nameplate 4"	1	1	1
39*	2144500	Wiring Diagram			
40*	2144600	Wiring Diagram			
41*	2144601	Wiring Diagram, EDU-15G-CE VER.			
42*	2144700	Wiring Diagram			
43*	2144800	Wiring Diagram			
44*	2144801	Wiring Diagram, EDU-24G-CE VER			
45*	2144900	Wiring Diagram			
46*	2145000	Wiring Diagram			
47*	2145001	Wiring Diagram, EDU-36G-CE VER			
* NOT ILLUSTRATED					
RECOMMENDED STOCK PARTS					



GARLAND PARTS IDENTIFICATION

BROILER ED/EDU-15B, ED/EDU-30B, ED/EDU-42B

ED Series

ITEM	PART #	DESCRIPTION	MODEL		
			QTY		
			ED/EDU -15B	ED/EDU -30B	ED/EDU -42B
1	2134899	Main Top Assembly	1		
	2161499	Main Top Assembly		1	
	2165399	Main Top Assembly			1
2	G0844-1	Broiler Grate	2	4	6
3	G0875-2	Element Broiler 208V, 1.35KW	2	4	6
	G0875-1	Element Broiler 240V, 1.35KW	2	4	6
	G0875-4	Element Broiler 220V, 1.35KW	2	4	6
	G0875-5	Element Assy, 230V, 1350W	2	4	6
		EDU Models Only			
4	G0857-1-9	Element Clamp	5	10	15
5	2135799	Grate Handle Assembly	1	1	1
6	2135400	Element Terminal Box	1	2	3
7	2135500	Element Terminal Box Cover	1	2	3
8	2159499	Grease Collector Assembly	1		
	2162199	Grease Collector Assembly		1	
	2165899	Grease Collector Assembly			1
9	G01497-1	Bx Connector Straight 3/8".	1	2	3
10	1029600	Antishorts #1	2	4	6
11	1029400	BX Cable 3/8"	1	2	3
12	1028500	Connector 3/8" 90 DEG. Romex	1	2	3
13	2159100	Element Wires	1	2	3
14	G01500-1	Ground Terminal 55AMP	1	1	1
15	2147300	Terminal Block 3 Circuit	1	1	1
	2147302	Terminal Block 3 Circuit Export	1	1	
	2147301	Terminal Block-4 Circuit			1
16	2149400	Door Hinge Right Hand	1	1	1
	2149401	Door Hinge Left Hand	1	1	1
17	078174-1	Magnetic Door Catch	1	1	1
18	2142800	Grease Tray	1	1	
	2222900	Grease Tray			1
19	F157	Bolt-3/8-16X1 1/16"	4	4	4
	078109-1	Plastic Leg (Optional)	4	4	4
20	2159000	Primary Wires	1		
	2159001	Primary Wires		1	
	2159002	Primary Wires			1
21	G03185-2	Infinite Switch-240 Volt	1	2	3
22	2138504	Pilot Green	1	2	3
24	2138700	Knob	1	2	3
25	2139000	Dial Insert	1	2	3
26	2147700	Ground Wire	1	1	1
27	2159101	Element Wires	2	4	6
28	2149299	Door Assembly Enamelled 15"	1		
	2149296	Door Assembly Enamelled 30"		1	
	2149289	Door Assembly 42" Enamelled			1
* NOT ILLUSTRATED					
RECOMMENDED STOCK PARTS					

GARLAND PARTS IDENTIFICATION

BROILER ED/EDU-15B, ED/EDU-30B, ED/EDU-42B

ED Series

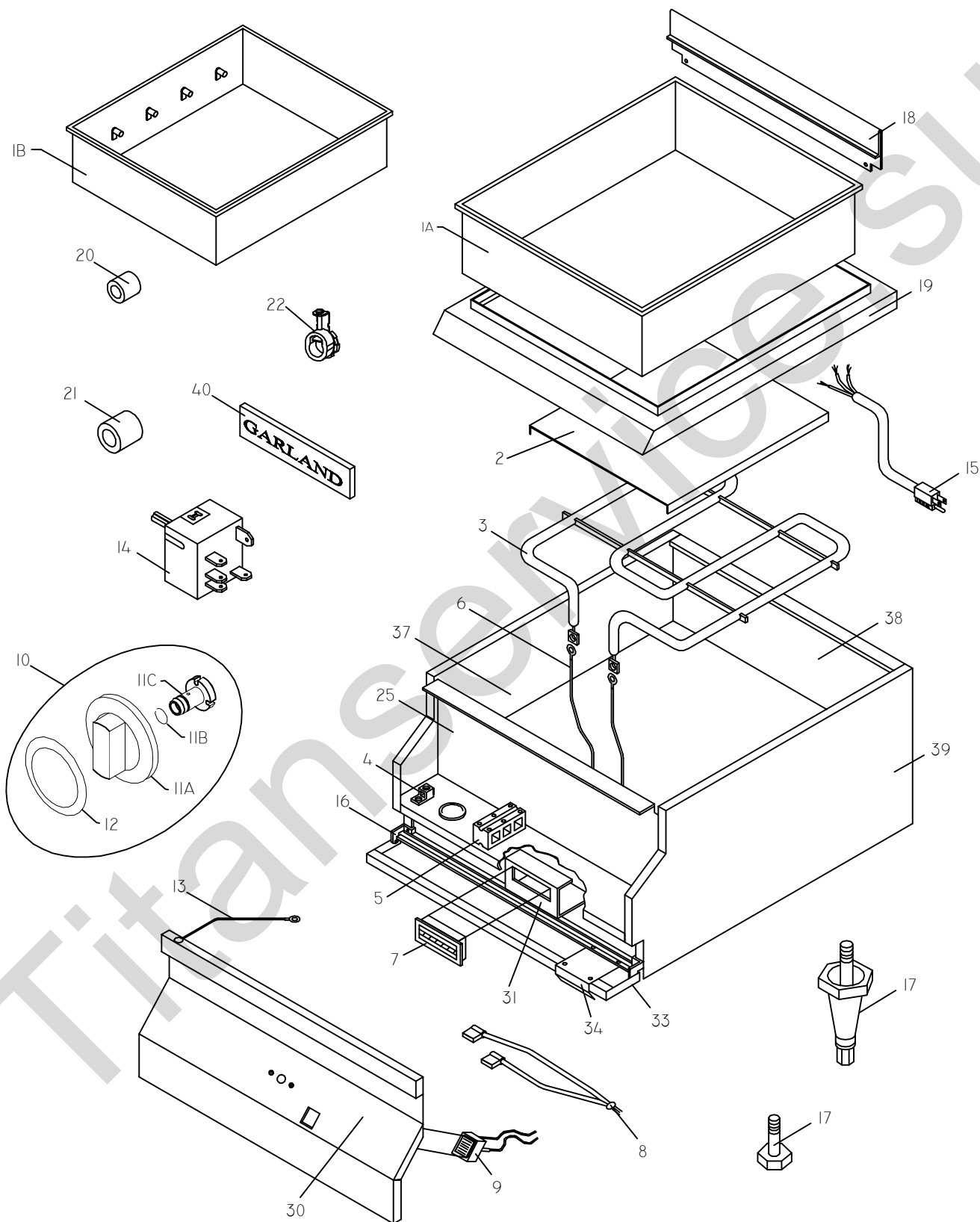
ITEM	PART #	DESCRIPTION	MODEL		
			QTY		
			ED/EDU -15B	ED/EDU -30B	ED/EDU -42B
29	2149300	Door Pull	1	1	1
30	2137900	Control Panel Up to 5/06/94	1		
	2349700	Control Panel 15" From 5/06/94	1		
	2138100	Control Panel Up to 4/04/94		1	
	2349900	Control Panel 30" From 4/04/94		1	
	2138400	Control Panel Up to 3/28/94			1
	2350200	Control Panel 42" From 3/28/94			1
31*	2139700	Control Panel Clip	2	2	3
32	G01487-5	Heyco Bushing 1-5/16 ID	1	1	1
33*	2155700	Grease Tray Slide	2	2	2
34	2149600	Wireway	1	1	1
35	2180699	Side Assembly LH - Black (Code 9402CG0180)	1	1	1
	2180698	Side - Left Assembly S/S (Code 9402CG0180)	1	1	1
	2349498	Body Side Assembly LH (Code 9402CG0181)	1	1	1
	2349496	Body Side Assembly LH (Code 9402CG0181)	1	1	1
36	2181000	Body Back & Bottom	1		
	2181001	Body Back & Bottom S/S	1		
	2181200	Body Back & Bottom (30B)		1	
	2181201	Body Back & Bottom S/S		1	
	2181500	Body Back & Bottom (42B)			1
	2181501	Body Back & Bottom S/S			1
37	2180599	Side Assembly RH (Code 9402CG0180)	1	1	1
	2180598	Side - Right Assembly S/S (Code 9402CG0180)	1	1	1
	2349499	Body Side Assembly RH (Code 9402CG0181)	1	1	1
	2349497	Body Side Assembly RH (Code 9402CG0181)	1	1	1
38*	2174500	Joiner Tab	2	2	2
39	2135199	Control Shield Assembly Up to 3/03/94	1		
	2352199	Control Shield Assembly From 3/03/94	1		
	2161699	Control Shield Assembly Up to 4/04/94		1	
	2352699	Control Shield Assembly From 4/04/94		1	
	2165299	Control Shield Assembly Up to 3/03/94			1
	2352799	Control Shield Assembly From 3/03/94			1
40*	2135600	Shield	1	2	3
41	2436000	Prop Hanger	1	2	3
42	2436100	Prop	1	2	3
* NOT ILLUSTRATED					
RECOMMENDED STOCK PARTS					

GARLAND PARTS IDENTIFICATION

BROILER ED/EDU-15B, ED/EDU-30B, ED/EDU-42B

ED Series

ITEM	PART #	DESCRIPTION	MODEL		
			QTY		
			ED/EDU -15B	ED/EDU -30B	ED/EDU -42B
43	2159800	Grate Stop	1	2	3
44	1902919	Garland Nameplate 4"	1	1	1
45*	2145100	Wiring Diagram ED-15B-Domestic			
	2145200	Wiring Diagram ED-15B-Exp			
	2145201	Wiring Diagram -EDU-15B-CE VER.			
46*	2155300	Wiring Diagram ED-30B-Domestic			
	2145400	Wiring Diagram ED-30B-Exp.			
	2145401	Wiring Diagram -EDU-30B-CE VER.			
47*	2145500	Wiring Diagram ED-42B-Domestic			
	2145600	Wiring Diagram ED-42B-Exp.			
	2145601	Wiring Diagram EDU-42B-CE VER.			
* NOT ILLUSTRATED					
RECOMMENDED STOCK PARTS					



GARLAND PARTS IDENTIFICATION
FOOD WARMER ED/EDU-15W, ED-15WP

ITEM	PART #	DESCRIPTION	MODEL	
			QTY	
			ED/EDU -15W	ED-15WP
1A	2186100	Food Warmer Tank	1	1
1B	2186199	Food Well With Pan Stop (Tim Hortons Only)		1
2	2156400	Element Plate	1	1
3	G0569-1	Element 120V,1 KW		1
	G0569-2	Element 208V,1KW	1	
	G0569-3	Element 240V,1 KW	1	
	G0569-5	Element 230V, 1.1KW EDU Models Only	1	
4	G01500-1	Ground Terminal 55AMP	1	1
5	2147300	Terminal Block 3 Circuit	1	1
	2147302	Terminal Block 3 Circuit Export	1	
6	2148300	Element Wires	1	1
7	078174-1	Magnetic Door Catch	1	1
8	2148200	Primary Wires		1
	2148201	Primary Wires	1	
9	2138504	Pilot Green	1	1
10	4512115	Knob Kit 2138700,2139000 Include Items # 11A, 11B, 11C & 12	1	1
11A	2138700	Knob NLA Use 3043200	1	1
	3043200	Knob		
11B	3043300	Hub Retaining Spring		
11C	3043207	Hub		
12	2139000	Dial Insert		
13	2147700	Ground Wire	1	1
14	G03185-1	Infinite Switch-120 VOLT		1
	G03185-2	Infinite Switch-240 Volt	1	
15	G2840-1	Cord & Plug-Set 3/14 Wire 15A		1
16	2149400	Door Hinge Right Hand	1	1
	2149401	Door Hinge Left Hand	1	1
17	F157	Bolt-3/8-16X1 1/16"	4	4
	078109-1	Plastic Leg (Optional)	4	4
18	2168000	Back Splash to 12/07/95	1	1
	2385500	Back Splash from 12/07/95	1	1
19	2133700	Main Top	1	1
20	G01487-8	Heyco Bushing 11/16 ID	1	1
21	G01487-5	Heyco Bushing 1-5/16 ID	1	1
22	G01497-1	Bx Connector Straight 3/8".	1	1
23*	G0577-1-6	Element Baffle Pan	1	1
24*	1472205	Insulation 17 X 12 X 1	1	1
25	2133899	Control Shield Assembly Up to 8/18/94	1	1
		Control Shield Assembly From 8/18/94		
	2352099	Control Shield Assembly From 8/18/94	1	1

* NOT ILLUSTRATED

RECOMMENDED STOCK PARTS

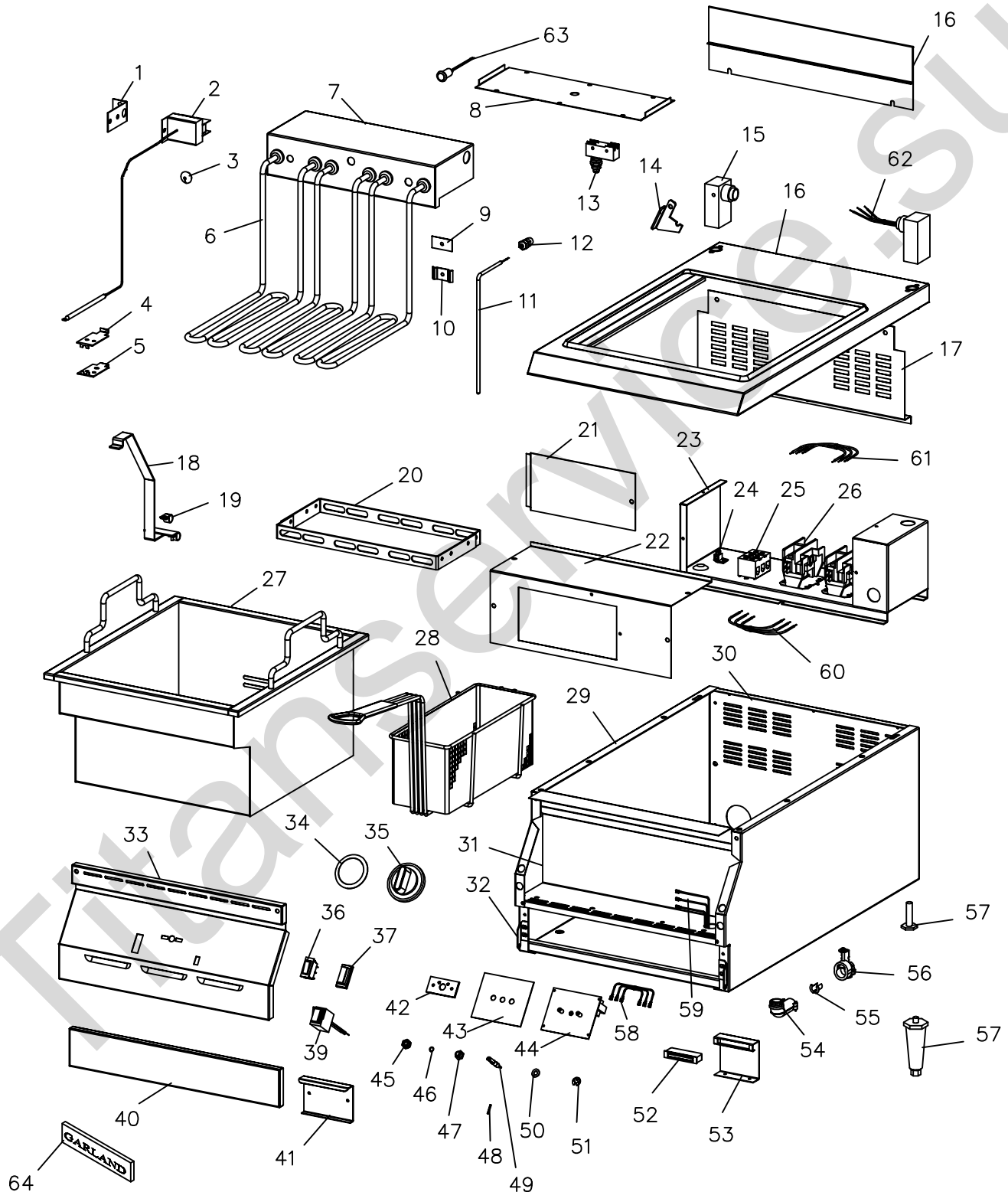
GARLAND PARTS IDENTIFICATION
FOOD WARMER ED/EDU-15W, ED-15WP

ITEM	PART #	DESCRIPTION	MODEL	
			QTY	
			ED/EDU -15W	ED-15WP
26*	079113-1	Fibrefrac 970J 1/8"	1	1
27*	2133999	Element Tray Assembly	1	1
28*	2134000	Side Liner	2	2
29*	2134500	Front Liner	1	1
30	2137900	Control Panel	1	1
		Up to 5/06/94		
	2349700	Control Panel 15"	1	1
		From 5/06/94		
31	2139600	Magnet Mounting Bracket	1	1
		Up to 5/07/91		
	2183500	Magnet Bracket	1	1
		From 5/07/91		
32*	2139700	Control Panel Clip	2	2
33	2149299	Door Assembly Enamelled 15"	1	1
34	2149300	Door Pull	1	1
35*	2149600	Wireway	1	1
36*	2174500	Joiner Tab	2	2
37	2180699	Side Assembly LH - Black (Code 9402CG0180)	1	1
	2180698	Side - Left Assembly S/S (Code 9402CG0180)	1	1
	2349498	Body Side Assembly LH (Code 9402CG0181)	1	1
	2349496	Body Side Assembly LH (Code 9402CG0181)	1	1
38	2181000	Body Back & Bottom	1	1
	2181001	Body Back & Bottom S/S	1	1
39	2180599	Side Assembly RH (Code 9402CG0180)	1	1
	2180598	Side - Right Assembly S/S (Code 9402CG0180)	1	1
	2349499	Body Side Assembly RH (Code 9402CG0181)	1	1
	2349497	Body Side Assembly RH (Code 9402CG0181)	1	1
40	1902919	Garland Nameplate 4"	1	1
41*	2146500	Wiring Diagram Domestic ED-15W		
42*	2146600	Wiring Diagram Export ED-15W		
43*	2146601	Wiring Diagram EDU-15W CE VER.		
44*	2146700	Wiring Diagram ED-15WP		

* NOT ILLUSTRATED

RECOMMENDED STOCK PARTS

Titanservice.su



GARLAND PARTS IDENTIFICATION
ELECTRIC SUPER FRYER ED-15SF, ED-30SFT, EDU-18-36SF

ITEM	PART #	DESCRIPTION	MODEL			
			QTY			
			ED-15 SF	ED-30 SFT	EDU- 18SF	EDU- 36SF
1	2158300	Hi-Limit Mounting Bracket	1	2	1	2
2	2147600	Hi Limit 430 Degrees F	1	2	1	2
3	G1155-1	Black PVC Grommet #315-463	1	2	1	2
4	2160700	Bulb Clamp Top	1	2	1	2
5	2160899	Bulb Clamp Bottom Assembly	1	2	1	2
6	2147500	Super Fryer Element 208 VOLT	3	6		
	2147501	Super Fryer Element 220 VOLT	3	6		
	2147502	Super Fryer Element 240 VOLT	3	6	3	6
	2147503	Super Fryer Element 230 VOLTS EDU Model Only			3	6
7	2158499	Termination Box Assembly	1	2	1	2
8	2158500	Termination Box Cover	1	2		
	2158501	Termination Box Cover Ce.			1	2
9	2160499	Clamp Back Assembly	1	2	1	2
10	2160300	Rtd Clamp	1	2	1	2
11	2147000	Rtd Sensor-Fryer	1	2	1	2
12	2147400	Liquid-Tite Fitting #3444	1	2	1	2
13	2398600	Switch W/Sealing Cap X01-E1G6			1	2
14	2385400	Termination Box Support	1	2	1	2
15	2157399	End Post Assembly	2	4	2	4
16	2384999	Main Top Assy	1			
	2385199	Main Top Assy		1		
	2384998	Main Top Assembly			1	
	2385198	Main Top Assembly				1
17	2157800	Rear Shield	1			
	2157801	Rear Shield		1		
	2157802	Rear Sheild			1	
	2157803	Rear Sheild				1
18	2160598	Element Lifting Handle	1	2	1	2
19	F141	Clamp-Tube Tinnerman Use GF141	2	4	2	4
20	2158699	Element Clamp Assembly	1	2	1	2
21	2176000	Inspection Cover	1	1	1	1
22	2157900	Contacto Box Cover	1			
	2157700	Contacto Box Cover		1		
	2157901	Contacto Box Cover			1	
	2157701	Contacto Box Cover				1
23	2158100	Contacto Box	1			
	2158000	Contacto Box		1		
	2158101	Contacto Box			1	
	2158001	Contacto Box				1
24	G01500-1	Ground Terminal 55AMP	1		1	
	G01499-1	Ground Terminal 105A Large SLU-70		1		1
25	2147300	Terminal Block 3 Circuit	1		1	
	G01268-1	Terminal Block #824 Export N.L.A.		3		
	G01268-1	Terminal Block #824 Export N.L.A.		4		

* NOT ILLUSTRATED

RECOMMENDED STOCK PARTS

GARLAND PARTS IDENTIFICATION
ELECTRIC SUPER FRYER ED-15SF, ED-30SFT, EDU-18-36SF

ITEM	PART #	DESCRIPTION	MODEL			
			QTY			
			ED-15 SF	ED-30 SFT	EDU- 18SF	EDU- 36SF
25 Cont	G01268-2	Terminal Block End #830 N.L.A.		1		
	G01280-3-7	Terminal Block Channel 3 LUG Domestic N.L.A.		1		
	G01280-4-7	Terminal Block Channel 4 LUG Export N.L.A.		1		
	2694800	Export Terminal Block (5)				1
26	2186900	Contactor Single Pole	2	4	2	4
27	2133599	Fry-Tank Assembly	1	2	1	2
28	G02700-3	Fryer Basket Twin R.H.	1	2	1	2
	G02700-4	Fryer Basket Twin L.H.	1	2	1	2
	G02701-2	Fryer Basket Single	OPTIONAL			
29	2180699	Side Assembly LH - Black (Code 9402CG0180)	1	1	1	1
	2180698	Side - Left Assembly S/S (Code 9402CG0180)	1	1	1	1
	2180599	Side Assembly RH (Code 9402CG0180)	1	1	1	1
	2180598	Side - Right Assembly S/S (Code 9402CG0180)	1	1	1	1
	2349499	Body Side Assembly RH (Code 9402CG0181)	1	1	1	1
	2349498	Body Side Assembly LH (Code 9402CG0181)	1	1	1	1
	2349497	Body Side Assembly RH (Code 9402CG0181)	1	1	1	1
	2349496	Body Side Assembly LH (Code 9402CG0181)	1	1	1	1
30	2180899	Body Back & Bottom Assy (15F)	1			
	2180898	Body Back & Bottom S/S	1			
	2181399	Body Back & Bottom Assy (30FT)		1		
	2181398	Body Back & Bottom S/S		1		
	2180897	Body Back & Bottom Assy. 18" W.C.			1	
	2180896	Body Back & Bottom Assy S/S			1	
	2181397	Back and Bottom Assembly W.C.				1
	2181396	Back & Bottom Assembly S/S				1
31	2351900	Control Shield	1			
	2352500	Control Shield		1		
	2351902	Control Sheild			1	
	2352502	Control Sheild				1
32	2149400	Door Hinge Right Hand	1	1	1	1
	2149401	Door Hinge Left Hand	1	1	1	1
33	2349500	Control Panel	1			
	2350000	Control Panel		1		
	2349501	Control Panel			1	
	2350001	Control Panel				1
34	2138900	Dial Insert F/ED-15F,30F (F) 200-375	1	2	1	2
	2138901	Dial Insert F/ED-15FE,30FE (C) 95-192	1	2	1	2
35	2138700	Knob NLA Use 3043200	1	2	1	2
36	2146800	Illuminated Power Switch	1	2	1	2
37	3011401	PVC Cap	1	2	1	2
39	2138500	Pilot Amber	1	2	1	2
40	2149299	Door Assembly Enamelled 15"	1			
	2149296	Door Assembly Enamelled 30"		1		
	2149298	Door Ass'y (Enamelled) 18"			1	

* NOT ILLUSTRATED

RECOMMENDED STOCK PARTS

GARLAND PARTS IDENTIFICATION
ELECTRIC SUPER FRYER ED-15SF, ED-30SFT, EDU-18-36SF

ITEM	PART #	DESCRIPTION	MODEL			
			QTY			
			ED-15 SF	ED-30 SFT	EDU- 18SF	EDU- 36SF
	2149295	Door Assembly Enamelled 36"				1
41	2149300	Door Pull	1	1	1	1
42	2491500	Stop Plate Assembly	1	2	1	2
43	2159300	Insulator-Thermostat	1	2	1	2
44	2142000	Electronic Thermostat 200-375 F	1	2	1	2
45	2358200	Shaft Seal N9030 X 1/4	1	2	1	2
46	2382800	Shaft Retaining Spring	1	2	1	2
47	2167300	Panel Bearing Assembly	1	2	1	2
48	2167000	Spring Tension Pin	1	2	1	2
49	2166800	Potentiometer Shaft	1	2	1	2
50	2167100	Bowed Spring Washer	1	2	1	2
51	2167200	Retaining Ring	1	2	1	2
52	078174-1	Magnetic Door Catch	1	1	1	1
53	2139600	Magnet Mounting Bracket to 5/07/91	1	1	1	1
	2183500	Magnet Bracket from 5/07/91	1	1	1	1
54	1028500	Connector 3/8" 90 DEG. Romex	1	2	1	2
55	1029600	Antishorts #1	2	4	2	4
56	G01497-1	Bx Connector Straight 3/8".	1	2	1	2
57	F157	Bolt-3/8-16X1 1/16"	4	4	4	4
	078109-1	Plastic Leg (Optional)	4	4	4	4
58	2169200	Panel Control Wire F/ED15F,30F	1	2	1	2
59	2169100	Contact Control Wire F/ED-15F	1			
	2170500	Contact Control Wire F/ED-30F		1		
	2169101	Control Wires - Contactor			1	
	2170501	Control Wires - Contactor				1
60	2168800	Contact Jumper F/ED-15F,30F Export	1	2	1	
	2168801	Contact Jumper				2
	2170000	Contact Jumper F/ED-30F Domestic		1		
61	2168700	Contact Wire F/ED-15F Domestic	1			
	2168701	Contact Wire F/ED-15F Export	1		1	
	2169900	Contact Wire F/ED-30F Domestic		1		
	2169901	Contact Wires F/ED-30F Export		1		1
62	2168900	Left End Post Wire F/ED-15F Dom.	1			
	2168901	Left End Post Wire F/ED-15F Export	1			
	2168902	Left End Post Wires Harness			1	
	2169000	Right End Post Wire F/ED-15F Domestic	1			
	2169001	Right End Post Wire F/ED-15F Export	1		1	
	2170100	LF Left End Post Wire F/ED-30F Domestic		1		
	2170101	LF Left End Post Wire EXPED30F Export		1		
	2170102	L.F. Left End Post Wires Harness				1
	2170200	LF Right End Post Wire F/ED30F Domestic		1		
	2170201	LF Right End Post Wire F/ED30F Export		1		1
	2170300	RF Left End Post Wire F/ED-30F Domestic		1		
	2170301	RF Left End Post Wire F/ED-30F Export		1		
	2170302	R.F. Left End Post Wires Harness				1
	2170400	RF Right End Post Wire F/ED30F Domestic		1		
	2170401	Right End Post Wire F/ED30F Export		1		1

* NOT ILLUSTRATED

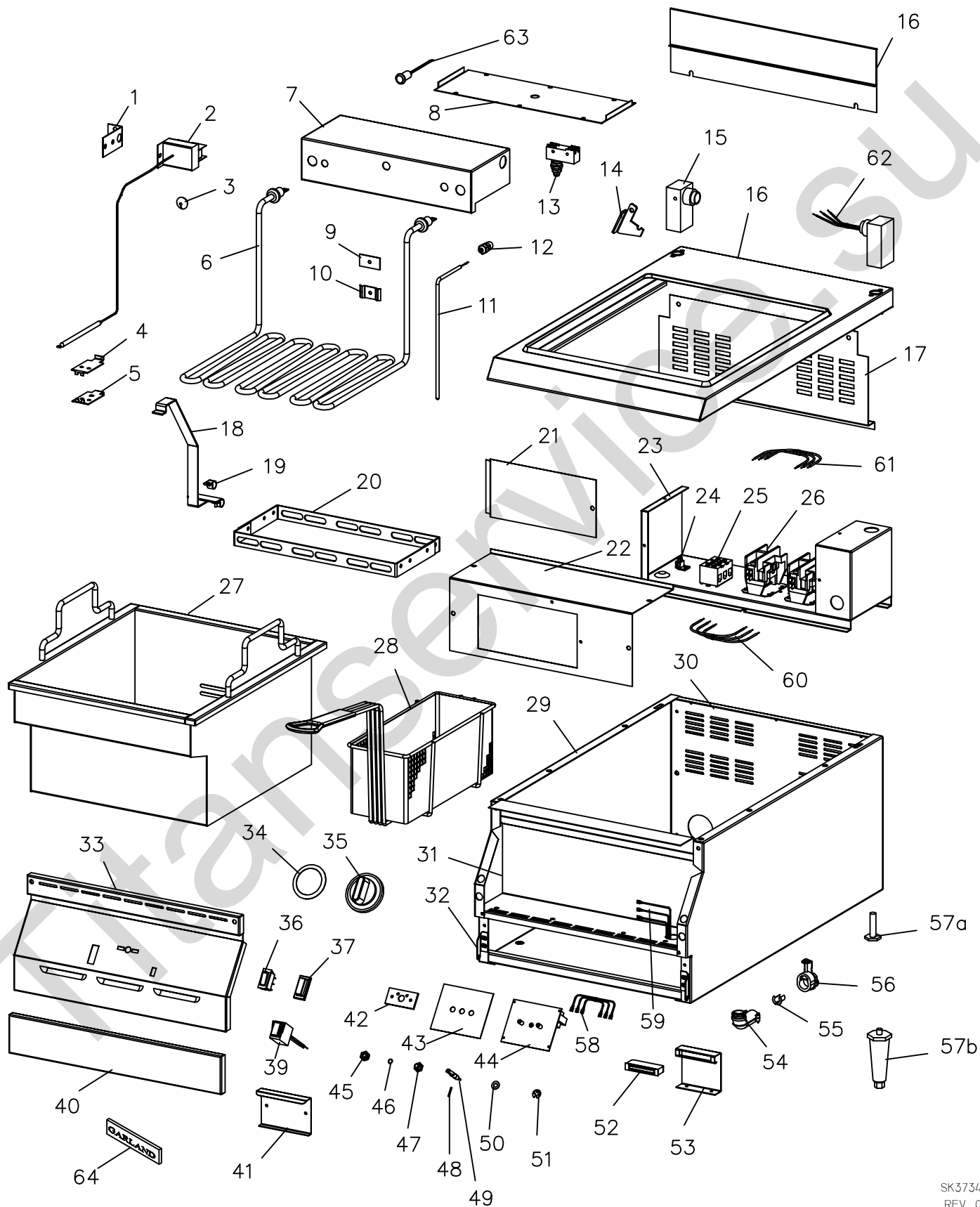
RECOMMENDED STOCK PARTS

GARLAND PARTS IDENTIFICATION
ELECTRIC SUPER FRYER ED-15SF, ED-30SFT, EDU-18-36SF

ITEM	PART #	DESCRIPTION	MODEL			
			QTY			
			ED-15 SF	ED-30 SFT	EDU- 18SF	EDU- 36SF
63	G01296-1	Pilot Red 240V			1	2
64	1902919	Garland Nameplate 4"	1	1	1	1
65*	2145700	Wiring Diagram	ED-15SF-DOM			
	2145800	Wiring Diagram	ED-15SF-EXP			
66*	2145900	Wiring Diagram	ED-30SF-DOM			
	2144600	Wiring Diagram	ED-30SF-EXP			
67*	2145801	Wiring Diagram	EDU-18SF			
68*	2146001	Wiring Diagram	EDU-36SF			

* NOT ILLUSTRATED
RECOMMENDED STOCK PARTS

Titanservice.su



GARLAND PARTS IDENTIFICATION
ELECTRIC FRYER ED-15F,ED-30FT, EDU-18-36FT

ITEM	PART #	DESCRIPTION	MODEL			
			QTY			
			ED-15F	ED-30FT	EDU-18F	EDU-36FT
1	2158300	Hi-Limit Mounting Bracket	1	2	1	2
2	2147600	Hi Limit 430 Degrees F	1	2	1	2
3	G1155-1	Black PVC Grommet #315-463	1	2	1	2
4	2160700	Bulb Clamp Top	1	2	1	2
5	2160899	Bulb Clamp Bottom Assembly	1	2	1	2
6	2185500	Fryer Element 208V 5.3KW	1	2	1	2
	2185501	Fryer Element 220V 5.929KW	1	2	1	2
	2185502	Fryer Element 240V 5.3KW	1	2	1	2
	2185503	Fryer Element, 230V, 5.3KW EDU Model Only			1	2
7	2158499	Termination Box Assembly	1	2	1	2
8	2158500	Termination Box Cover	1	2		
	2158501	Termination Box Cover Ce.			1	2
9	2160499	Clamp Back Assembly	1	2	1	2
10	2160300	Rtd Clamp	1	2	1	2
11	2147000	Rtd Sensor-Fryer	1	2	1	2
12	2147400	Liquid-Tite Fitting #3444	1	2	1	2
13	2398600	Switch W/Sealing Cap X01-E1G6			1	2
14	2385400	Termination Box Support	1	2	1	2
15	2157399	End Post Assembly	2	4	2	4
16	2384999	Main Top Assy	1			
	2385199	Main Top Assy		1		
	2384998	Main Top Assembly			1	
	2385198	Main Top Assembly				1
17	2157800	Rear Shield	1			
	2157801	Rear Shield		1		
	2157802	Rear Sheild			1	
	2157803	Rear Sheild				1
18	2160598	Element Lifting Handle	1	2	1	2
19	F141	Clamp-Tube Tinnerman Use GF141	2	4	2	4
20	2158699	Element Clamp Assembly	1	2	1	2
21	2176000	Inspection Cover	1	1	1	1
22	2157900	Contactactor Box Cover	1			
	2157700	Contactactor Box Cover		1		
	2157901	Contactactor Box Cover			1	
	2157701	Contactactor Box Cover				1
23	2158100	Contactactor Box	1			
	2158000	Contactactor Box		1		
	2158101	Contactactor Box			1	
	2158001	Contactactor Box				1
24	G01500-1	Ground Terminal 55AMP	1		1	
	G01499-1	Ground Terminal 105A Large SLU-70		1		1

* NOT ULLUSTRATED
RECOMMENDED STOCK PARTS

GARLAND PARTS IDENTIFICATION
ELECTRIC FRYER ED-15F,ED-30FT, EDU-18-36FT

ITEM	PART #	DESCRIPTION	MODEL			
			QTY			
			ED-15F	ED-30FT	EDU-18F	EDU-36FT
25	2147300	Terminal Block 3 Circuit	1		1	
	G01268-1	Terminal Block #824 Export N.L.A.		3		
	G01268-1	Terminal Block #824 Export N.L.A.		4		
	G01268-2	Terminal Block End #830 N.L.A.		1		
	G01280-3-7	Terminal Block Channel 3 LUG Domestic N.L.A.		1		
	G01280-4-7	Terminal Block Channel 4 LUG Export N.L.A.		1		
	2694800	Export Terminal Block (5)				1
26	2186900	Contactor Single Pole	2	4	2	4
27	2133599	Fry-Tank Assembly	1	2	1	2
28	G02700-3	Fryer Basket Twin R.H.	1	2	1	2
	G02700-4	Fryer Basket Twin L.H.	1	2	1	2
	G02701-2	Fryer Basket Single	OPTIONAL			
29	2180699	Side Assembly LH - Black (Code 9402CG0180)	1	1	1	1
	2180698	Side - Left Assembly S/S (Code 9402CG0180)	1	1	1	1
	2180599	Side Assembly RH (Code 9402CG0180)	1	1	1	1
	2180598	Side - Right Assembly S/S (Code 9402CG0180)	1	1	1	1
	2349499	Body Side Assembly RH (Code 9402CG0181)	1	1	1	1
	2349498	Body Side Assembly LH (Code 9402CG0181)	1	1	1	1
	2349497	Body Side Assembly RH (Code 9402CG0181)	1	1	1	1
30	2349496	Body Side Assembly LH (Code 9402CG0181)	1	1	1	1
	2180899	Body Back & Bottom Assy (15F)	1			
	2180898	Body Back & Bottom S/S	1			
	2181399	Body Back & Bottom Assy (30FT)		1		
	2181398	Body Back & Bottom S/S		1		
	2180897	Body Back & Bottom Assy. 18" W.C.			1	
	2180896	Body Back & Bottom Assy S/S			1	
31	2181397	Back and Bottom Assembly W.C.				1
	2181396	Back & Bottom Assembly S/S				1
	2351900	Control Shield	1			
	2352500	Control Shield		1		
32	2351902	Control Sheild			1	
	2352502	Control Sheild				1
	2149400	Door Hinge Right Hand	1	1	1	1
33	2149401	Door Hinge Left Hand	1	1	1	1
	2349500	Control Panel	1			
	2350000	Control Panel		1		
	2349501	Control Panel			1	
34	2350001	Control Panel				1
	2138900	Dial Insert F/ED-15F,30F (F) 200-375	1	2	1	2
	2138901	Dial Insert F/ED-15FE,30FE (C) 95-192	1	2	1	2
35	2138700	Knob NLA Use 3043200	1	2	1	2
36	2146800	Illuminated Power Switch	1	2	1	2
37	3011401	PVC Cap	1	2	1	2
39	2138500	Pilot Amber	1	2	1	2

* NOT ULLUSTRATED
RECOMMENDED STOCK PARTS

GARLAND PARTS IDENTIFICATION
ELECTRIC FRYER ED-15F,ED-30FT, EDU-18-36FT

ITEM	PART #	DESCRIPTION	MODEL			
			QTY			
			ED-15F	ED-30FT	EDU-18F	EDU-36FT
40	2149299	Door Assembly Enamelled 15"	1			
	2149296	Door Assembly Enamelled 30"		1		
	2149298	Door Ass'y (Enamelled) 18"			1	
	2149295	Door Assembly Enamelled 36"				1
41	2149300	Door Pull	1	1	1	1
42	2491500	Stop Plate Assembly	1	2	1	2
43	2159300	Insulator-Thermostat	1	2	1	2
44	2142000	Electronic Thermostat 200-375 F	1	2	1	2
45	2358200	Shaft Seal N9030 X 1/4	1	2	1	2
46	2382800	Shaft Retaining Spring	1	2	1	2
47	2167300	Panel Bearing Assembly	1	2	1	2
48	2167000	Spring Tension Pin	1	2	1	2
49	2166800	Potentiometer Shaft	1	2	1	2
50	2167100	Bowed Spring Washer	1	2	1	2
51	2167200	Retaining Ring	1	2	1	2
52	078174-1	Magnetic Door Catch	1	1	1	1
53	2139600	Magnet Mounting Bracket to 5/07/91	1	1	1	1
	2183500	Magnet Bracket from 5/07/91	1	1	1	1
54	1028500	Connector 3/8" 90 DEG. Romex	1	2	1	2
55	1029600	Antishorts #1	2	4	2	4
56	G01497-1	Bx Connector Straight 3/8".	1	2	1	2
57a	F157	Bolt-3/8-16X1 1/16"	4	4	4	4
57b	078109-1	Plastic Leg (Optional)	4	4	4	4
58	2169200	Panel Control Wire F/ED15F,30F	1	2	1	2
59	2169100	Contacto Control Wire F/ED-15F	1			
	2170500	Contacto Control Wire F/ED-30F		1		
	2169101	Control Wires - Contactor			1	
	2170501	Control Wires - Contactor				1
60	2168800	Contacto Jumper F/ED-15F,30F Export	1	2		
	2168801	Contacto Jumper			1	2
61	2184801	Contacto Wires	1			
	2184803	Contacto Wires	1		1	
	2184800	Contacto Wires		1		
	2184802	Contacto Wires		1		1
62	2184900	Left End Post Wires	1			
	2184901	Left End Post Wire Harness			1	
	2185000	Right End Post Wires	1			
	2185001	Right End Post Wires	1		1	
	2185100	L.F. Left End Post Wires		1		
	2185101	L.F. Left End Post Wires Harness				1
	2185200	L.F.Right End Post Wires		1		
	2185201	L.F.Right End Post Wires		1		1
	2185300	R.F. Left End Post Wires		1		
	2185301	R.F. Left End Post Wires Harness				1

* NOT ULLUSTRATED

RECOMMENDED STOCK PARTS

GARLAND PARTS IDENTIFICATION
ELECTRIC FRYER ED-15F,ED-30FT, EDU-18-36FT

ITEM	PART #	DESCRIPTION	MODEL			
			QTY			
			ED-15F	ED-30FT	EDU-18F	EDU-36FT
62	2185400	R.F.Right End Post Wires		1		
Cont	2185401	R.F.Right End Post Wires		1		1
63	G01296-1	Pilot Red 240V			1	2
64	1902919	Garland Nameplate 4"	1	1	1	1
65*	2184400	Wiring Diagram	ED-15F - DOM			
	2184500	Wiring Diagram	ED-15F - EXP			
66*	2184600	Wiring Diagram	ED-30F - DOM			
	2184700	Wiring Diagram	ED-30F - EXP			
67*	2184501	Wiring Diagram	EDU-18F			
68*	2184701	Wiring Diagram	EDU-36F			

* NOT ULLUSTRATED
RECOMMENDED STOCK PARTS

GARLAND PARTS IDENTIFICATION
Revision History

REV. #	PAGE #	ITEM #	NOTE	DATE
4	20		New Drawing	Dec. 4/02
	21	1B	New Part Number added (2186199)	
		10	New Knob Kit number added (4512115)	
		11B	New Part numbers added	
		11C		
5	8	13 & 14	Swicthed numbers	Feb 25/04
	10	31	Asterisk deleted	
	24		Item # 16 was # 64 (Error)	
	28	67	Part number 2145801 - was 21445801	
	33	57b	Part number 078109-1 Added	

Titanservice.su

NOTES

Titanservice.su

 **GARLAND**

Titanservice.su