

# PARTS LIST

for

# **KitchenAid®**

## **7 QT. STAND MIXER – EUROPEAN**

### **RESIDENTIAL – BOWL LIFT**

#### **MODELS:**

5KSM7580XEOB0 (Onyx Black)  
5KSM7580XECA0 (Candy Apple)  
5KSM7580XEER0 (Empire Red)  
5KSM7580XEMS0 (Medallion Silver)  
5KSM7580XAFP0 (Frosted Pearl)



FOR CUSTOMER SATISFACTION ALWAYS USE  
FACTORY SPECIFICATION PARTS

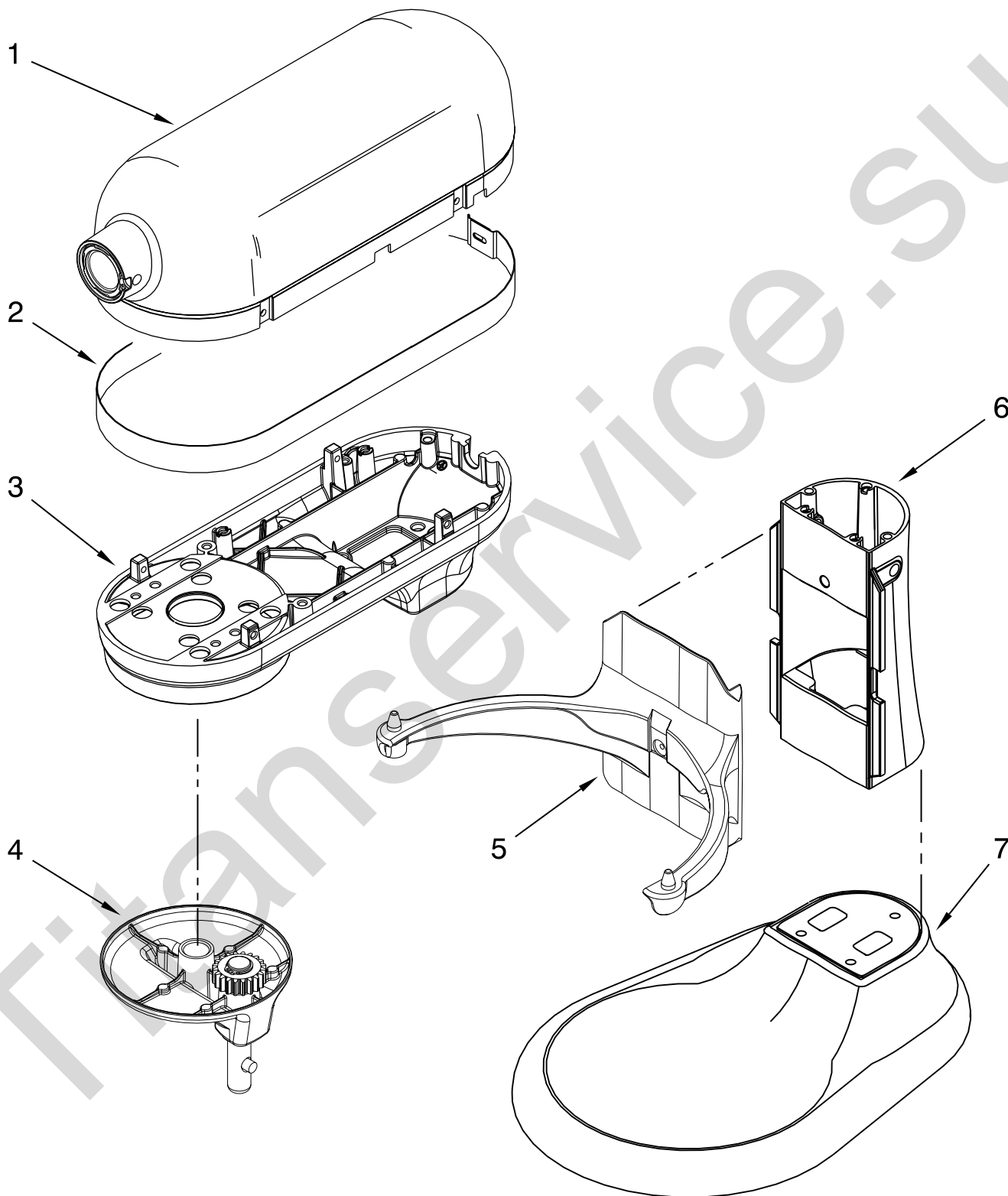


KITCHENAID

ST. JOSEPH MICHIGAN 49085

# COLOR VARIATION PARTS

For Model: 5KSM7580XE\_\_0



FOR ORDERING INFORMATION REFER TO PARTS PRICE LIST

# COLOR VARIATION PARTS

For Model: 5KSM7580XE\_\_0

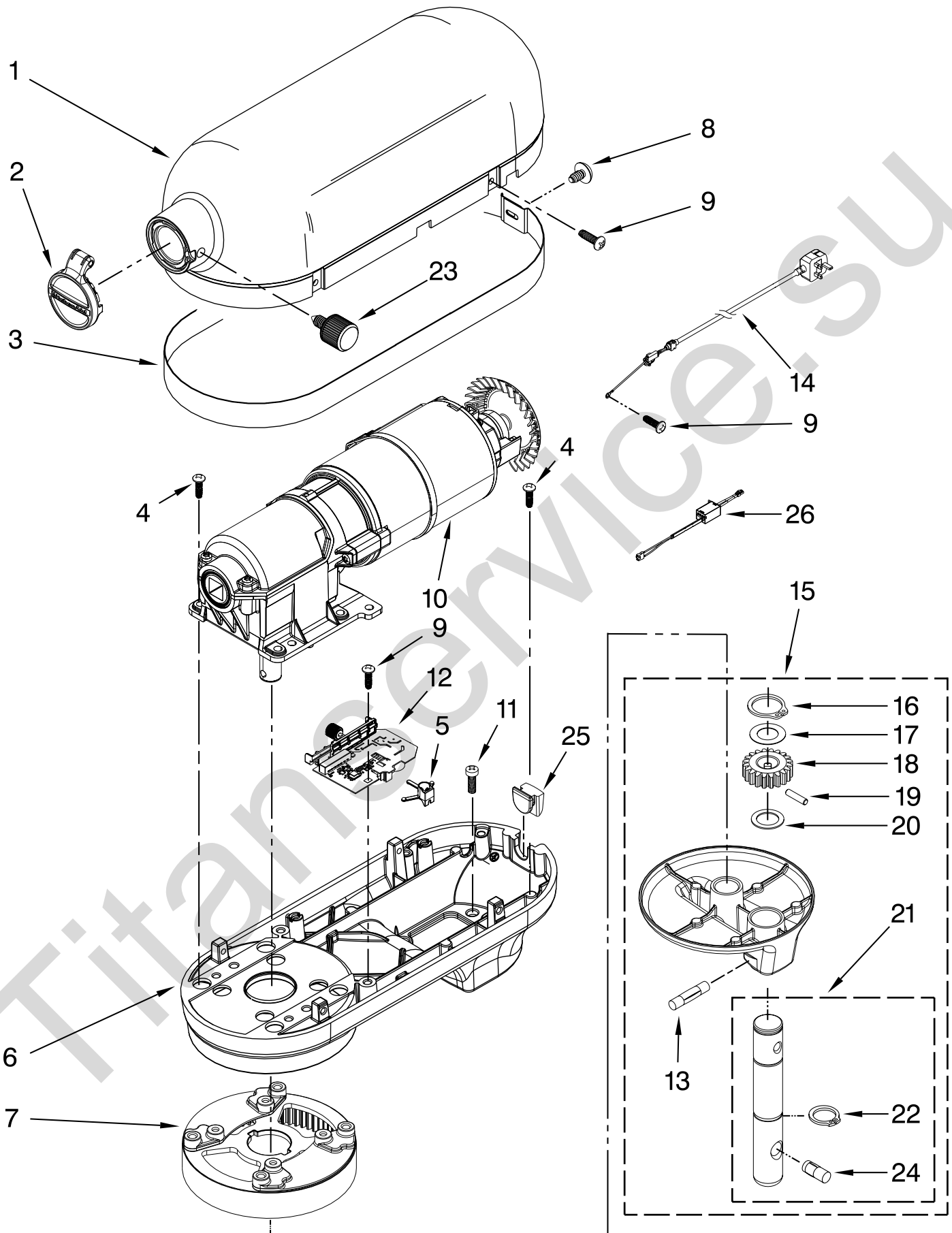
Illus. No.	Part No.	DESCRIPTION
---------------	-------------	-------------

Colors Subject To Change.  
Any Color Not Listed is  
No Longer Available.  
If Additional Colors Are Added,  
This Page Will Be Updated.

1	Motor Housing
	9705296 Onyx Black
	W10403016 Candy Apple
	9705300 Empire Red
	W10354887 Medallion Silver
	W10454050 Frosted Pearl
2	Trim Band
	W10419449 Dark Platinum
3	Lower Gearcase
	W10410012 Onyx Black
	W10403004 Candy Apple
	W10410011 Empire Red
	W10354881 Medallion Silver
	W10454059 Frosted Pearl
4	Planetary
	W10419443 Onyx Black
	W10419440 Candy Apple
	W10419442 Empire Red
	W10452362 Medallion Silver
	W10452343 Frosted Pearl
5	Bowl Support and Pins
	9705356 Onyx Black
	W10402998 Candy Apple
	9705360 Empire Red
	W10354878 Medallion Silver
	W10448659 Frosted Pearl
6	Column and Pins
	W10450990 Onyx Black
	W10450997 Candy Apple
	W10451578 Empire Red
	W10451118 Medallion Silver
	W10444018 Frosted Pearl
7	Base & Foot Assembly
	9705344 Onyx Black
	W10402986 Candy Apple
	9705348 Empire Red
	W10354860 Medallion Silver
	W10448638 Frosted Pearl

# CASE, GEARING AND PLANETARY UNIT

For Model: 5KSM7580XE\_0



FOR ORDERING INFORMATION REFER TO PARTS PRICE LIST

# CASE, GEARING AND PLANETARY UNIT

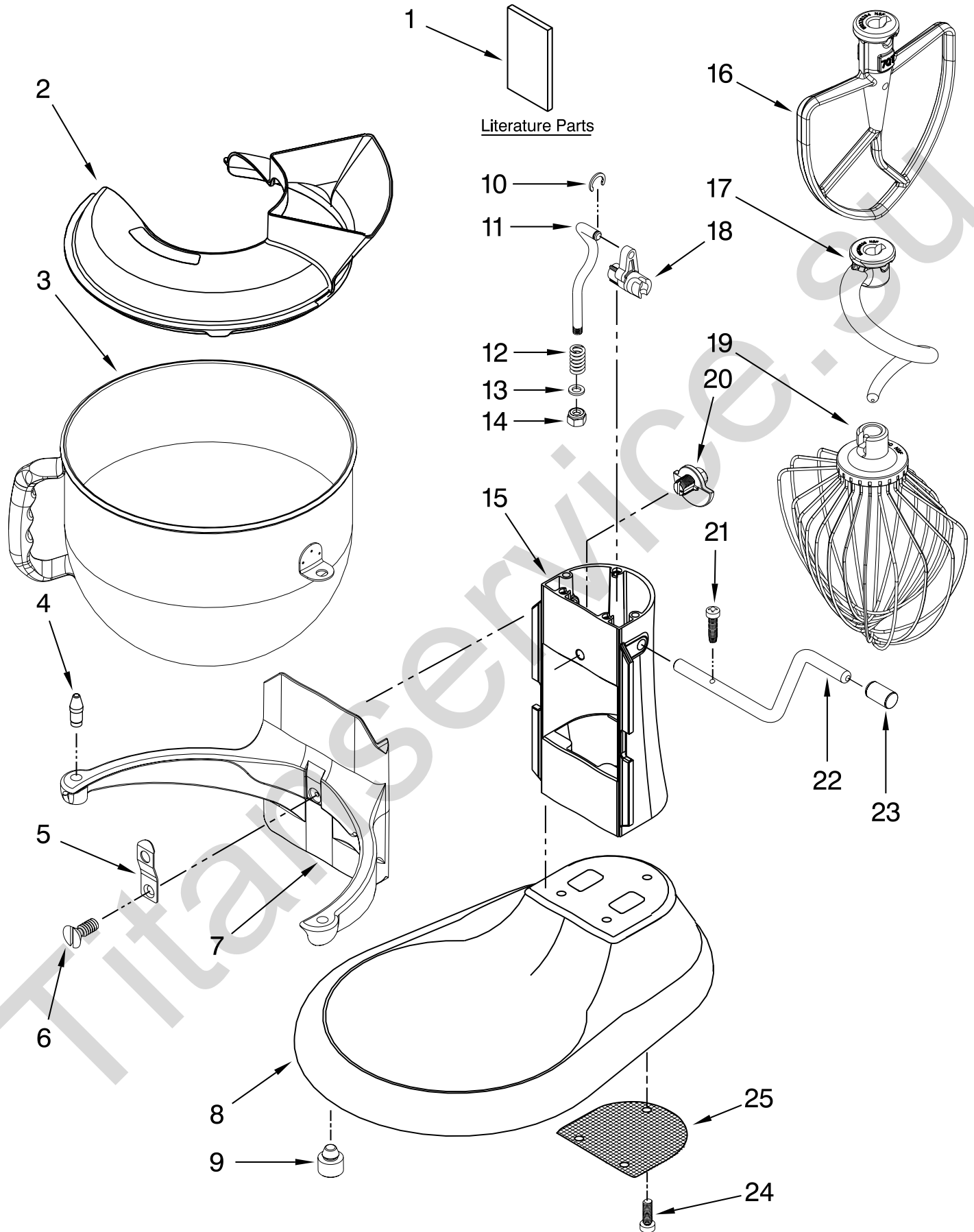
For Model: 5KSM7580XE\_\_0

Illus. No.	Part No.	DESCRIPTION
1	**	Gearcase Motor Housing
2	W10394928	Cap, Attachment Hub, Hinged
3	**	Band, Trim
4	W10351843	Screw
5	W10305968	Holder, Control
6	**	Lower Gearcase
7	W10234493	Gear, Ring & Plate to Planetary
8	3400617	Screw
9	3400814	Screw
10	W10307642	Motor, 230 V Assy w/Transmission
11	3400200	Screw
12	W10388322	Control Assembly
13	W10234531	Pin, Groove
14		Cord, Power
	W10459114	White
	W10307850	Black
15	**	Planetary Assembly
16	9703438	Clip, Retaining
17	9706090	Washer
18	W10234643	Gear, Pinion
19	9707223	Pin, Retaining
20	8533910	Washer
21	W10419438	Shaft, Agitator
22	9703680	Clip, Retaining
23		Thumb Screw
	W10360791	Black
24	9704677	Pin, Groove
25	W10417201	Clip, Plug
26	W10447372	RFI Filter

\*\*Refer To Page 3  
Color Variation Parts

# BASE AND PEDESTAL UNIT

For Model: 5KSM7580XE\_0



FOR ORDERING INFORMATION REFER TO PARTS PRICE LIST

# BASE AND PEDESTAL UNIT

For Model: 5KSM7580XE\_\_0

Illus. No.	Part No.	DESCRIPTION
1		Literature Parts
	W10421400	Use & Care Guide
	W10463000	Repair Parts List
2	9709924	Shield, Pouring
3	W10354778	Bowl, 7 Qt.
4	240185	Pin, Bowl Locating
5	9703474	Latch, Bowl Spring
6	3400018	Screw
7	**	Bowl Support
8	**	Base and Foot Assembly
9	9708649	Foot, Rubber
10	9703307	Clip
11	9706787	Rod, Bowl Lift
12	9237	Spring
13	9703439	Washer
14	8533907	Nut
15	**	Column Assembly
16	W10376294	Beater, Flat
17	W10462785	Hook, Dough
18	9706885	Arm, Bowl Lift
19	W10352664	Whip, Wire
20	9703426	Cam, Adjusting
21	3400863	Screw
22	9706788	Handle, Bowl Lift
23	9703698	Cap, Handle
24	3400200	Screw
25	9706814	Screen, Vent

\*\*Refer To Page 3  
Color Variation Parts

# ACCESSORY PARTS

For Model: 5KSM7580XE\_\_0

Illus. No.	Part No.	DESCRIPTION
	4164778	Mixer Attachment Pak (Includes Food Grinder (FG-A), Food Strainer (FVSP), And Vegetable Slicer, (RVS-A) (FPP-A)
	4164749	Food Grinder (FG-A)
	4164775	Fruit/Vegetable Strainer Parts (Use With FG-A Model Only) (FVSP)
	4164750	Rotor Slicer/Shredder (With 4 Standard Cones) Fine Shredder, Coarse Shredder, Thick Slicer, And Thin Slicer (RVS-A)
	4164774	Fruit/Vegetable Strainer And Food Grinder (FVS/FG-A)
	241675	Food Tray (FT)
	4164748	Juicer (JE)
	4164803	Sausage Stuffer Kit (SSA)
	4176597	Grease, Planetary
	KPEXTA	Pasta Extruder with 6 Discs

FOR ORDERING INFORMATION REFER TO PARTS PRICE LIST