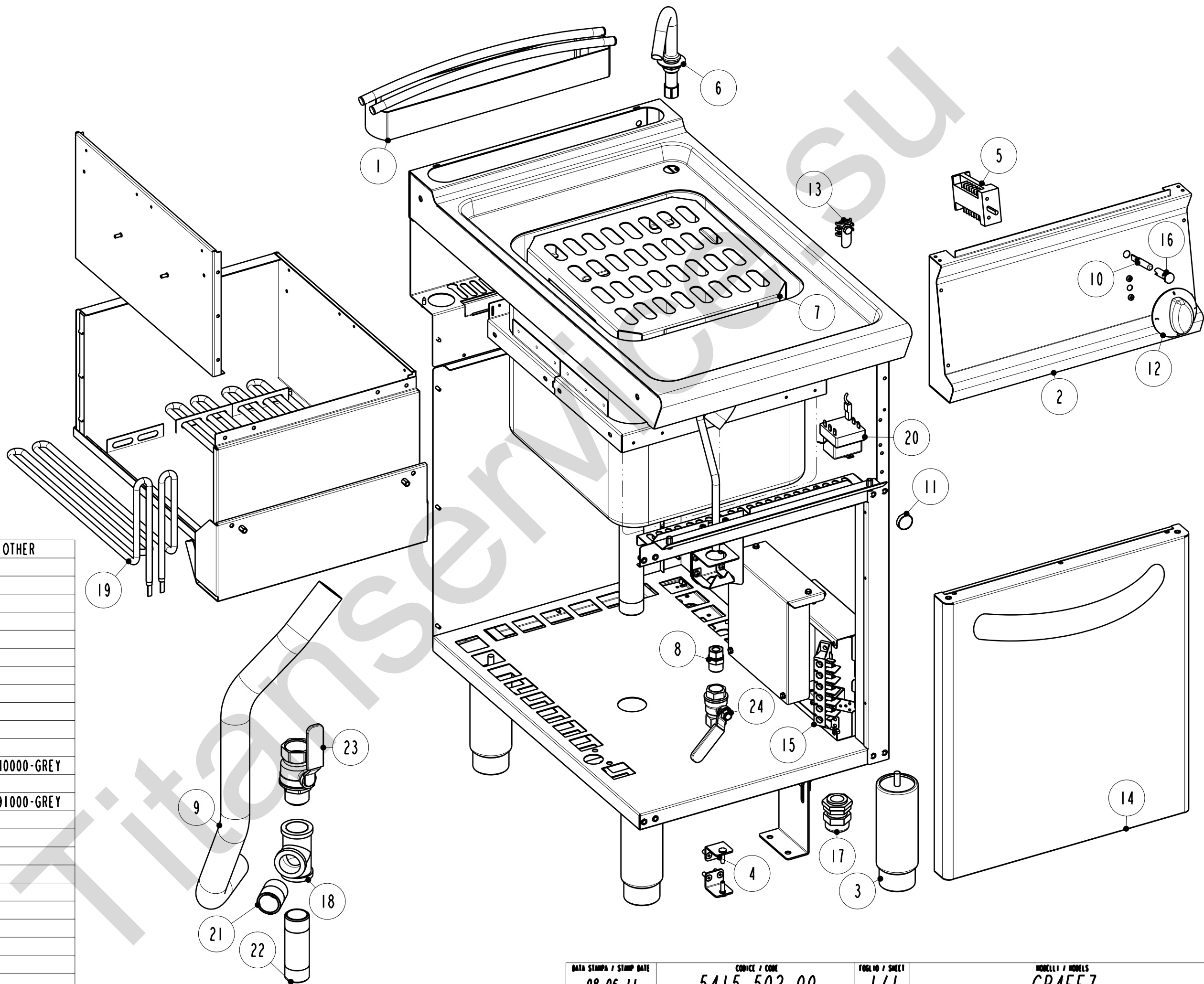


POS	STANDARD	OTHER
1	01711000	
2	01475000	
3	00602000	
4	01392000-2Pz	
5	01071000	
6	01756000	
7	00575000	
8	00828000	
9	00586000	
10	00052000-LAMP	
11	01135000	
12	01249000 BLU	01340000-GREY
13	00304000	
14	01390000 BLU	01391000-GREY
15	00194000	
16	00053000-GREEN	
17	01055000-PG21	
18	00826000	
19	01798000	
20	00001007	
21	00825000	
22	00827000	
23	00579000	
24	01758000	



CODICI RICAMBIO PER FINITO / SPARE PARTS FOR THE FINISHED PRODUCT

Aggiornato al/Updated to 27/11/17

Artic./Item	Descrizione/Description			Modello/Model
716059	CUOCIPASTA ELETTRICO 24LT GN2/3 24LT GN2/3 ELECTRIC PASTA COOKER			CP4FE7
Cons./Recom.	Pos./Posit.	Ricambio/Replacement		Prezzo/Price List
	00322000	RC00322000	PASSACAVO OVALE	OVAL FAIRLEAD 4,86
	01784000	RC01784000	MANIGLIA VANO PROFI3520	HANDLE 39,47
	01905000	RC01905000	SOTTOMANOPOLA EL 1L NERO	BLACK UNDERKNOB 7,70
	02024000	RC02024000	SOTTOMANOPOLA EL 1L GRIGIO	GREY UNDERKNOB 7,18
	01	RC01711000	CAMINO 40 H45 TECNO74	FLUE ASSEMBLY 40 H45 L7 80,08
	03	RC00602000	PIEDE 1"3/4 INOX	FOOT 36,41
	04	RC01392000	CERNIERA PORTA VANO L9	DOOR HINGE 16,88
*	05	RC01071000	COMMUTATORE	SWITCH 18,87
	06	RC01756000	EROGATORE FISSO CUOCIPASTA	PASTACOOKER WATER OUTPUT 46,06
	07	RC00575000	FALSO FONDO	FALSE-BOTTOM 63,55
	08	RC00828000	GIUNTO	JOINT 22,84
	09	RC00586000	TUBO GOMMA	RUBBER TUBE 27,14
*	10	RC01782000	LAMPADA SEGN.NEON FASTON VERDE 230V	GREEN NEON LAMP 230V 6,09
	11	RC01135000	MAGNETE PER PORTE VANI	MAGNET FOR COMPARTMENT DOORS 5,96
	12a	RC01566000	MANOPOLA CUOCIPASTA ELETTRICO NERA	PASTACOOKER BLACK KNOB 9,05
	12b	RC01618000	MANOPOLA CUOCIPASTA ELETTRICO GRIGIA	PASTACOOKER GREY KNOB 9,05
	13	RC00304000	MORSETTO EQUIPOTENZIALE COMPLETO	EQUIPOTENTIAL CONNECTING BLOCK 6,62
	15	RC00194000	MORSETTIERA FV 122 B	CONNECTING BLOCK 9,16
*	16	RC01783000	PORTALAMPADA TRASPARENTE D10	TRANSPARENT LAMP HOLDER D10 5,30
	17	RC01055000	PRESSACAVO PG21 CON DADO	CABLE GLAND WITH NUT 9,16
	18	RC00826000	RACCORDO T 1" F-F	UNION T 1" F-F 17,54
*	19	RC01798000	RESISTENZA CUOCIPASTA CP_E7 T74 2KW 230V	HEATING ELEMENT FOR PASTACOOKER 71,72
*	20	RC00001007	TERMOSTATO DI SICUREZZA	SAFETY THERMOSTAT CPE 88,16

PAG. 1

CODICI RICAMBIO PER FINITO / SPARE PARTS FOR THE FINISHED PRODUCT

Aggiornato al/Updated to 27/11/17

Artic./Item	Descrizione/Description		Modello/Model
716059	CUOCIPASTA ELETTRICO 24LT GN2/3 24LT GN2/3 ELECTRIC PASTA COOKER		CP4FE7
Cons./Recom.	Pos./Posit.	Ricambio/Replacement	Prezzo/Price List
	21	RC00825000 TUBO SCARICO AMIDI	STARCH DRAIN PIPE 16,11
	22	RC00827000 TUBO SCARICO CUOCIPASTA	PASTA COOKER DRAIN PIPE 20,74
*	23	RC01522000 VALVOLA SFERA FF 1" LEVA ROSSA"	1" FF VALVE 48,17
	24	RC01758000 VALVOLA R910 1/2" F-F GIACOMINI	VALVE 1/2" 30,79