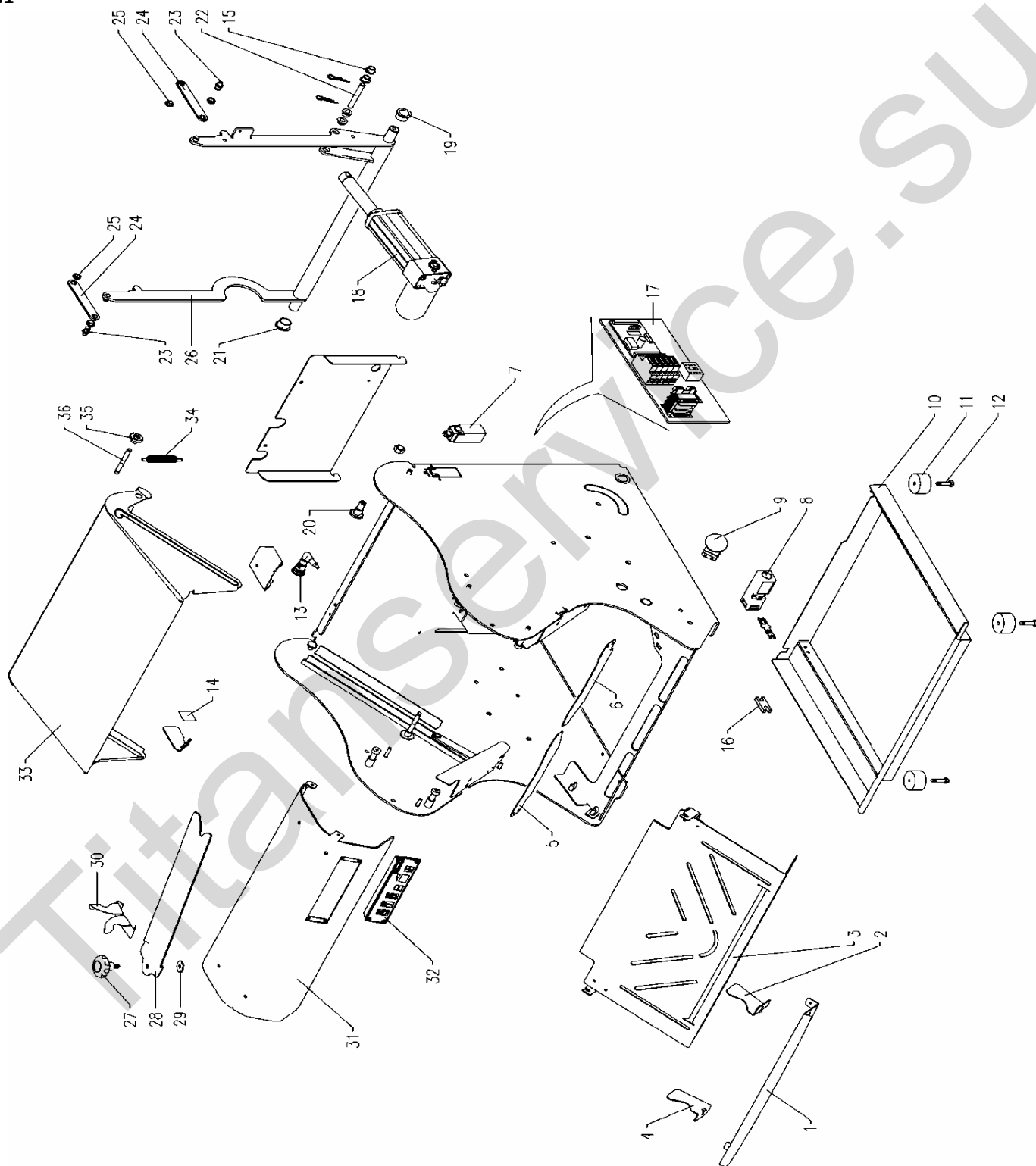


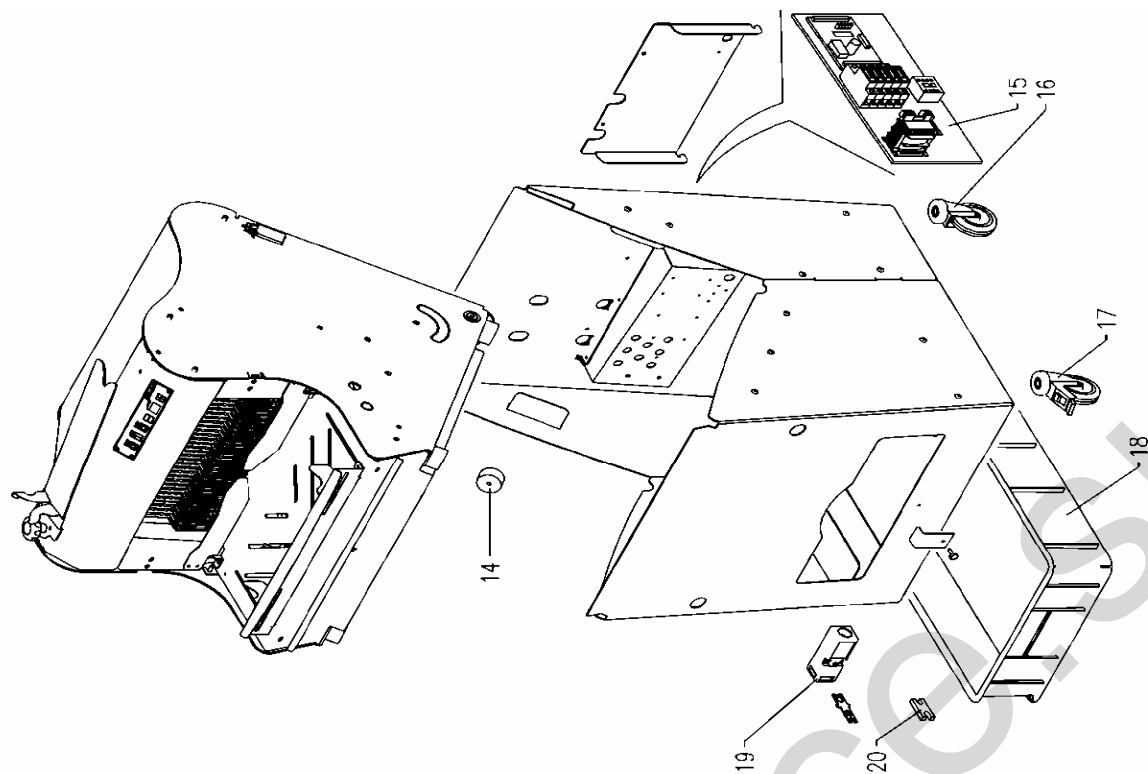
CP42 / 52 (2012)

Tav.1

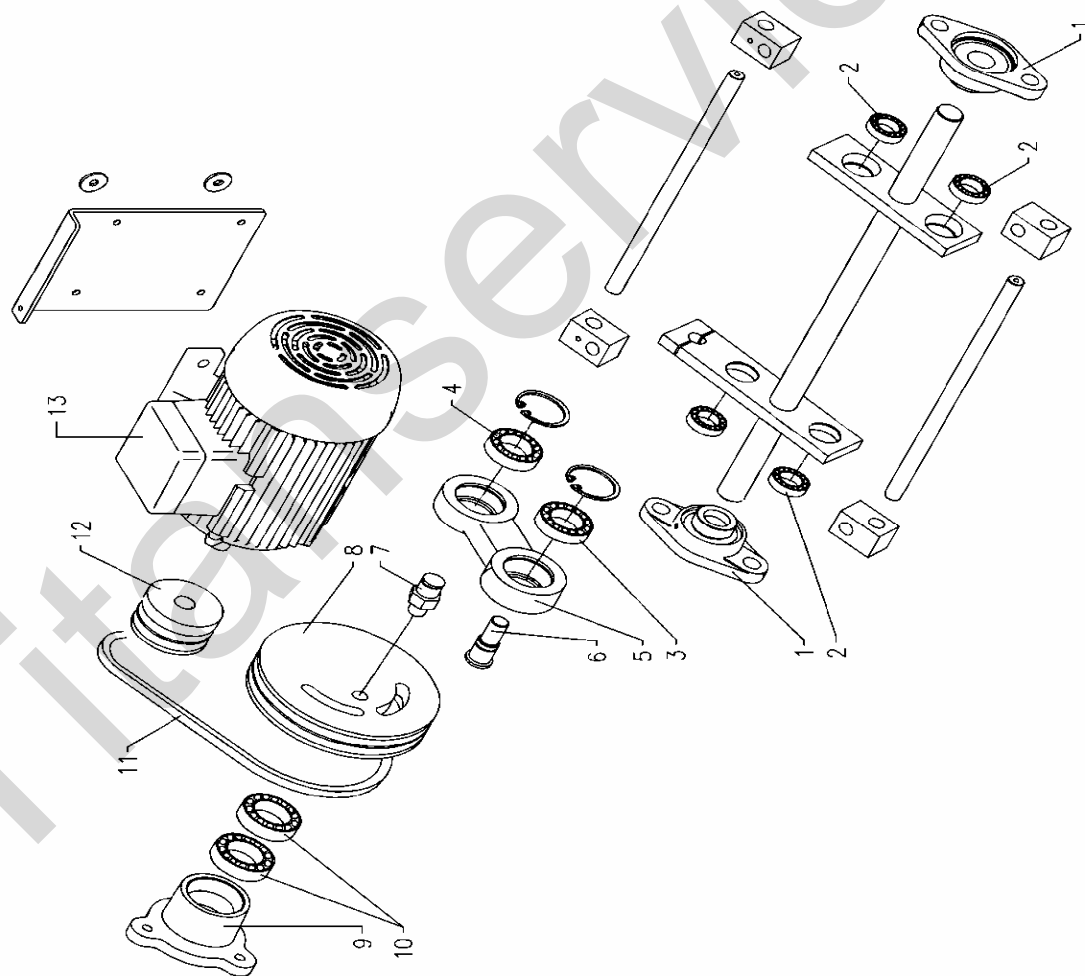


| Tav. 1 | | | CP42 | CP52 |
|--------|------------------------------------|--------------------------|---------------|---------------|
| | | | Codice / Code | Codice / Code |
| 1 | Piatto di contenimento | Exit bread support | D00670 | |
| 2 | Aletta di contenimento destra | Retaining right wing | D00688 | |
| 3 | Scivolo anteriore | Front slipping plate | D00648 | D00835 |
| 4 | Aletta di contenimento sinistra | Retaining left wing | D00689 | |
| 5 | Bandella di ritenuta | Plates | D00787 | |
| 6 | Bandella di ritenuta | Plates | D00787 | |
| 7 | Fine corsa (AP3T13Z11) | Limit switch | S00433 | |
| 8 | Micro interruttore + azionatore | Mcro switch | S00441 | |
| 9 | Pulsante di emergenza | Emergency button | S00055 | |
| 10 | Cassetto raccogli briciole | Drawer for crumbs | D00669 | |
| 11 | Piedini | Supports | C00050 | |
| 12 | Vite fissaggio piedini | Supports screw | D02888 | |
| 13 | Fotocellula | Photocell | S00023 | |
| 14 | Riflettore adesivo | Reflective adhesive | S00399 | |
| 15 | Bussola | Bushing | C00041 | |
| 16 | Distanziale forcella micro | Spacer Fork micro | D02892 | |
| 17 | Scheda elettrica | Electric board | S00409 | |
| 18 | Attuatore | Actuator | S00006 | |
| 19 | Boccola MP 08-20-2 | Bush | C00043 | |
| 20 | Perno apertura coperchio superiore | Pin open the top cover | D01259 | |
| 21 | Boccola MP 08-20-2 | Bush | C00043 | |
| 22 | Perno | Pin | D00636 | |
| 23 | Perno carro spingipane | Bread- press pin | D00636 | |
| 24 | Leva braccio spingipane | Bread- press lever | D00637 | |
| 25 | Bussola miniplast tipo mp 08-10-10 | Bushing | C00039 | |
| 26 | Braccio spingipane vern. | Bread-press arm | D00624 | |
| 27 | Volantino | Knob | C00060 | |
| 28 | Piano di confezionamento | Packaging surface | D00662 | |
| 29 | Rondella | Washer | C00428 | |
| 30 | Fermo piano di confezionamento | Packaging pin | D00663 | |
| 31 | Distanziale superiore | Front upper spacer plate | D00917 | |
| 32 | Tastiera comandi CP | Keyboard | S00410 | |
| 33 | Coperchio superiore | Front cover | D01261 | |
| 34 | Molla chiusura | Spring | C00306 | |
| 35 | Bussola coperchio superiore | Bush top cover | D01258 | |
| 36 | Perno coperchio superiore | Pin top cover | D01257 | |

Tav. 2



Tav.2

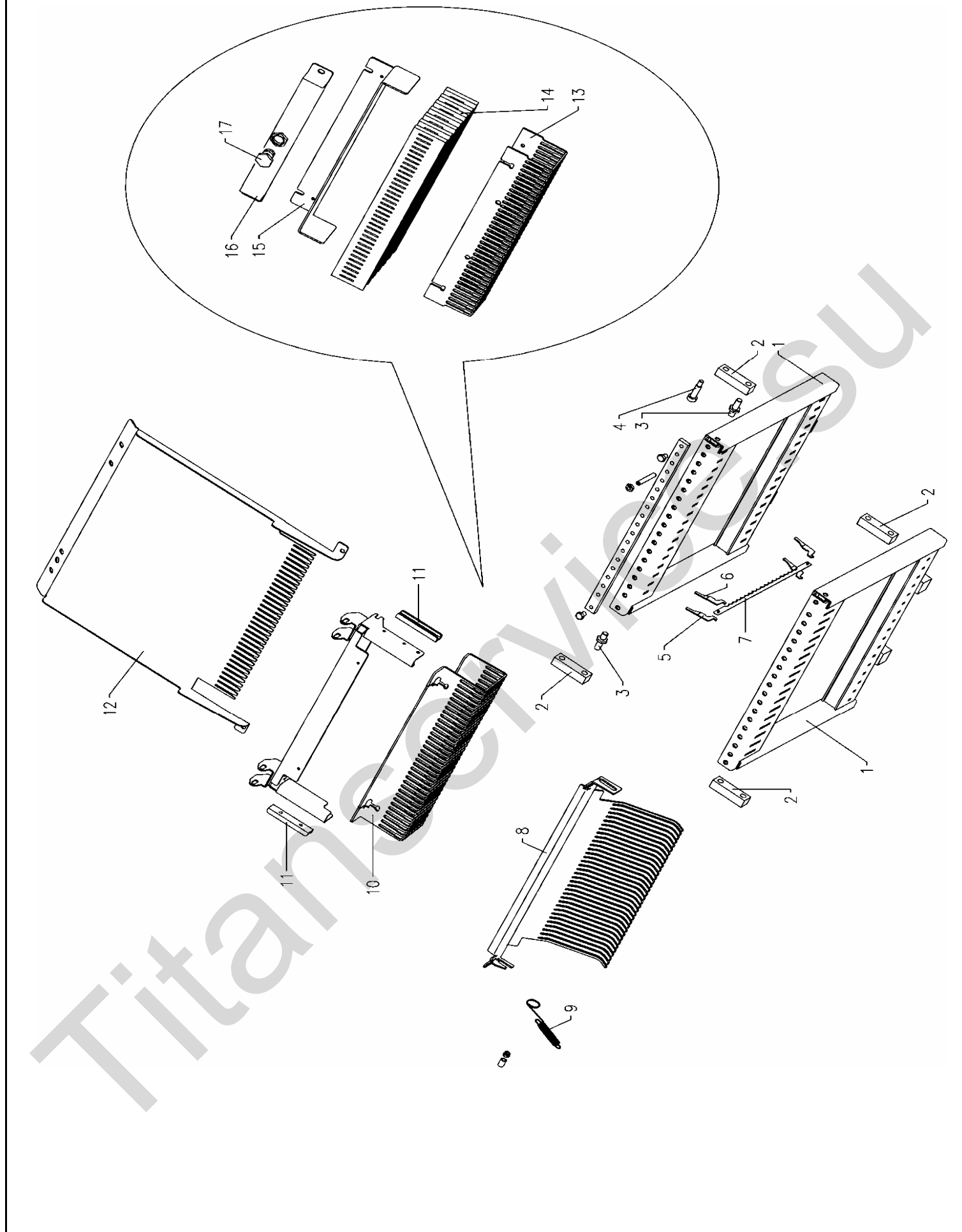


Tav. 2

CP42S

CP52S

| | | | | |
|----|----------------------------------|------------------------|---------------|--|
| 1 | Supporto ucfl 205 | Support | C00463 | |
| 2 | Cuscinetto uni 6202 2rs 15/35/11 | Bearing | C00174 | |
| 3 | Cuscinetto uni 2204 2rs 20/47/18 | Bearing | C00164 | |
| 4 | Cuscinetto uni 6204 2rs 20/47/14 | Bearing | C00175 | |
| 5 | Biella puleggia condotta | Connecting rod | D00642 | |
| 6 | Perno biella | Pulley pin | D00644 | |
| 7 | Perno puleggia condotta | Pulley pin | D00643 | |
| 8 | Puleggia condotta | Pulley | D00641 | |
| 9 | Supporto puleggia condotta | Pulley support | D00639 | |
| 10 | Cuscinetto 2rs 25/52/15 uni 6205 | Bearing | C00176 | |
| 11 | Cinghia trapezoidale rex xpz 710 | Trapezoidal belt | C00144 | |
| 12 | Puleggia motrice (50 hz) | Driving pulley | D00640 | |
| 13 | Motore elettrico | Electric motor | C00338 | |
| 14 | Piedini | Supports | C00050 | |
| 15 | Scheda elettrica | Electric board | S00409 | |
| 16 | Ruota girevole | Swinging wheel | C00439 | |
| 17 | Ruota girevole frenante | Swinging wheel + brake | C00438 | |
| 18 | Cassetto raccogli briciole | Drawer for crumbs | C00186 | |
| 19 | Chiave per micro interruttore | Key for micro switch | S00441 | |
| 20 | Micro interruttore | Mcro switch | D02505 | |



| | | | | |
|----|--------------------------------------|--------------------------|---------------|---------------|
| 1 | Telaio portalame (varie misure) | Blade frame | | |
| 2 | Biella | Connecting rod | D01431 | |
| 3 | Perno superiore telaio portalame | Blade frame superior pin | D00614 | |
| 4 | Vite rettificata M8 10x40 | Screw M8 10x40 | C00046 | |
| 5 | Leva tiramolla sinistro | Left spring lever | D00617 | |
| 6 | Leva tiramolla destro | Right spring lever | D00616 | |
| 7 | Lama inox con perni | Inox blade with pin | P00488 | |
| 8 | Premipane (varie misure) | Bread-press | | |
| 9 | Molla traz f1.24 l80.5 ø12 occhiello | Spring | D02800 | |
| 10 | Spingipane (varie misure) | Bread-push | | |
| 11 | Guida per spingipane | Bread- press guide | D00632 | |
| 12 | Scivolo posteriore (varie misure) | Rear slide | | |
| 13 | Spingipane (vari passi) | Bread-push | | |
| 14 | Feltro per oliatura sm42 | Oiling flet | D02797 | D02798 |
| 15 | Lamiera premi feltro | Felt sheet metal awards | D01612 | D01622 |
| 16 | Serbatoio olio | Oil tank | D01613 | D01623 |
| 17 | Tappo olio | Oil plug | C00599 | |