

POS.	Qty.	NAME	ART.No°	DRW. No°	MATERIAL	DIMENSION
All dimensions in mm General tolerance $\pm 0,5\text{mm}$			DRAWN: P.S.		MAT. : -	
FORM: February 2002			DATE : 23-4-2003		DIM. : -	
NAME: EXPLODED VIEW 430-STE			CHECK : -		REM. : PARTLIST 30.10.0.0000	
HFE VACUUM SYSTEMS Po. Box 2261 5202 CG 's-Hertogenbosch Phone : +31 (0)73 6271271 Fax: +31 (0)73 6271200			SCALE: 1 : 10		FINISH : -	
			FORM. A3		ART. No° -	
			REPLACED BY: -		REPLACES: -	
			REV. -		DRW No° 430-STE-090101	

Partlist 430-STE

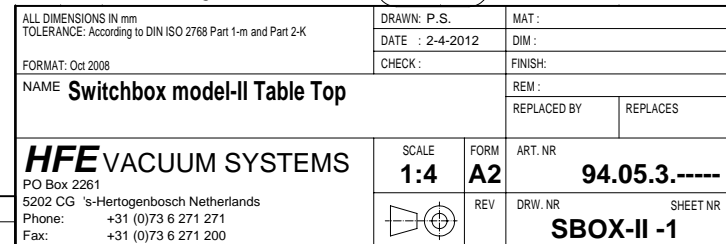
POS	ART. NR	DESCRIPTION
10	12.10.0.0240	BEARING SKIFFY 03/ACR
20	09.06.0.0310	TUBE STST 16X2 L=205
30	01.99.6.0020	BALLTAP 03/ACR L=29,5
40	01.99.6.0010	BALLTAP 03/ACR L=22
50	01.05.1.5010	ADJ.SCREW/SOC.HEAD M8X10 DIN916 A2
60	08.07.1.2110	HINGEPART ACR/03
70	01.10.1.0040	HEXAGON NUT M6 DIN934 A2
80	01.10.1.0030	HEXAGON NUT M5 DIN934 A2
85	01.22.1.0030	SPRING RING M5 DIN127 A2
90	01.04.1.5012	HEX.SOCKET HEAD CAP SCREW M8X12 DIN912 A2
100	01.20.1.0050	CASTLE WASHER M8
110	09.08.0.0550	HINGESUPPORT 03/ACR/1
130	06.01.4.0210	GASCYLINDER WITH BALL KNOB 350N/5257PK
140	09.02.1.1300	SUPPORT GASVALVE
150	06.09.3.0070	SPRING CONTROL BOX
170	01.04.1.3008	HEX.SOCKET HEAD CAP SCREW M5X8 DIN912 A2
300	94.05.3.15220	CONTROL UNIT 430-STE DS 1~230V 6,5A 1X16V
310	12.07.0.9530	COVER SWITCHBOX
320	12.07.0.7050A	MICROCELLULAR RUBBER 4MM BLACK
330	01.13.0.0000	HEXAGON FLANGENUT M5 DIN6923 A2
350	11.01.2.0000	SEALCORD C1-01
360	11.01.2.2000	VALVE CORD CC2-01
370	12.01.0.0240B	VACUUMCOVER 430-STE
380	01.05.1.6050	ADJ.SCREW/SOC.HEAD M10X50 D916 A2
390	01.21.1.0060	FLAT WASHER M10 D9021 A2
400	09.15.0.0055D	VACUUMCHAMBER 430-STE
410	09.01.1.0320B	BOTTOM SECTION 430-STE
420	1201.00030	INSERTPLATE 430-STE/180-/420-ST
430	11.02.0.1450	LIMITSWITCH WITH CABLE
440	01.04.1.3025	HEX.SOCKET HEAD CAP SCREW M5X25 DIN912 A2
450	96.03.2.1090	STICKER TENSION TRIANGLE
460	96.03.2.0398	STICKER MACHINETYPE
470	96.03.2.1100	STICKER 19X38 YELLOW
490	96.03.2.1110	STICKER 98X65 YELLOW
500	12.05.0.5010	SIL.PROFILE LIDGASKET 8MM 60°SH/25MTR
510	12.07.0.3060	CLOSINGRING 10X5X1 70 SHORE
520	01.09.3.0020	BOOK SCREW COVER 20MM
530	12.11.0.0010	RING NYLON (33-5)
540	12.08.0.0020	VIBRATION ABSORBER SILICONHOLDER ACR.COVER
550	08.01.1.0290	SILICONHOLDER 430-STE
570	12.05.0.5150	SILICON T-PROFILE 40° SHORE - 25M
580	01.06.1.2008	SLOTTED CHEESE HEAD SCREW M4X8 A2 DIN84
585	0199.00010	TENSION NAIL SILICONHOLDER
590	01.11.1.0050	CAPNUT HIGH M5 D1587 A2
610	08.08.1.7010	SUPPORT VIBR.ABSOR VAC-BAG-HOLDER
620	01.09.1.0010	SLOTT.RAIS.COUNTER.HEAD SCREW M4X10 DIN966 A2
630	12.08.0.0030	VIBRATION ABSORBER VACUUMBAGHOLDER
640	02.03.3.0090	ELBOW BRASS FOR GASPIPE
650	02.06.3.0070	BRASS NUT 1/4"
670	09.08.0.0035	LIDLOCKER 430-STE/180-/420-ST
680	02.06.9.0240	BLINDSTOPPER 1/8" OUT.HEXAGON COMPL.

Partlist 430-STE

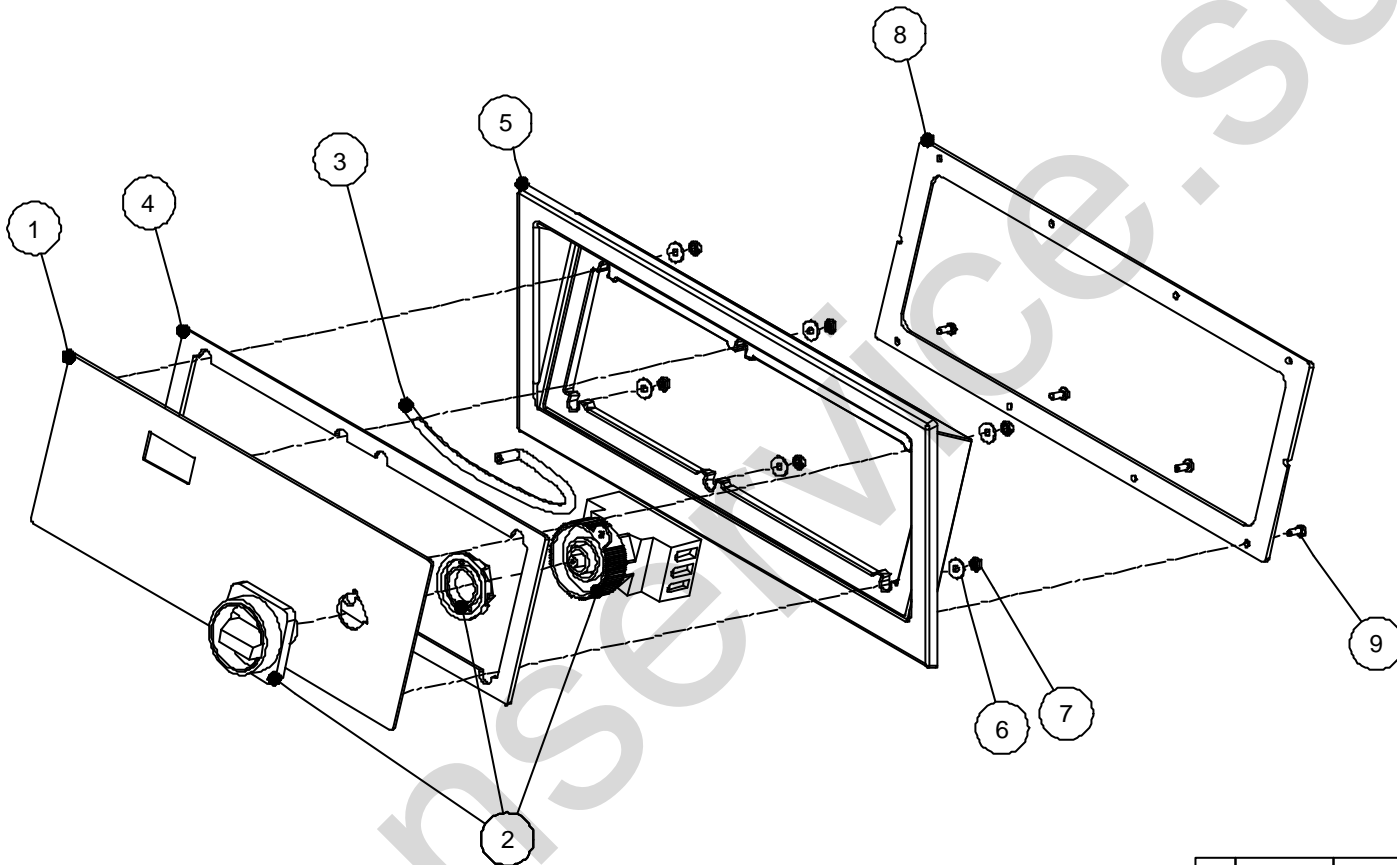
POS	ART. NR	DESCRIPTION
690	09.12.0.2060	GASNOZZLE STST 1/8"
710	02.05.4.0040	Y CONNECTINGPIECE 6MM
720	9414.00005	SEALCYLINDER 90MM TROUGH SHAFT M4+M5
725	01.05.1.3016	ADJ.SCREW/SOC.HEAD M5X16 DIN916 A2
730	0803.00015	EXTENSIONPIECE SEALCYLINDER 44MM
760	02.04.4.0020	SQUARE HOSE COUPLING 1/8"X6 EXT.
770	02.05.4.0060	CONNECTINGPIECE T-PIECE 6MM
781	9402.30455	SEALBEAM DS/3/455
782	9403.30455	SEALBEAM TS/3/455
783	9406.30455	SEALBEAM 8MM/3/455
784	9404.30455	SEALBEAM S2/3/455
790	12.08.0.0010	VIBRATION ABSORBER FOOT
800	01.09.1.0040	SLOTT.RAIS.COUNTER.HEAD SCREW M4X12 DIN7985 A2
805	01.21.1.0020	FLAT WASHER M4 D9021 A2
810	03.02.0.0140A	VALVE 2/2 MA-222-003-P27-SAH 24
820	02.04.3.0010	BRASS HOSE COUPLING 1/8"X6 EXT.
830	03.01.0.0130	VAC.PUMP 021-336 220/240-1-50
860	02.04.3.0090	HOSE COUPLING SQUARE 1/2"X19 MM
920	02.01.2.0080	HOSE CLIP ABA 15-24MM
930	12.05.0.2000	PVC SUCTIONHOSE HNA-20X3.4MM
940	07.03.4.0010	BRANCH PIPE READY
950	02.06.3.0130	BRASS DOUBLE NIPPLE 1/8"
960	13.40.0.0120	SILENCER ID-CL 1/8
970	03.02.0.0010A	VALVE COMBINATION 2/42/82
990	12.07.0.1210	O- RING 32X4
1000	03.01.1.0210	OIL ISO VG 32
1010	12.05.0.0010	HOSE (O2) DRAGO 6X13
1040	01.20.1.0030	CASTLE WASHER M5
1060	01.21.1.0040	FLAT WASHER M6 D9021 A2
1070	01.02.1.5010	HEXAGON SCREW M8X10 DIN933 A2
1080	01.22.2.0030	VEERRING VERTAND M4 DIN 6798-A
1090	01.22.1.0040	SPRING RING M6 DIN127 A2
1100	01.02.1.4010	HEXAGON SCREW M6X10 DIN933 A2
1110	02.01.2.0030	HOSE CLIP KLEMFA 12.8X14.8MM
1120	01.11.3.0100	CAPNUT HIGH M10 D1587 A2
1130	02.03.3.0010	ELBOW 1/8" INT/EXT BRASS
1150	96.03.2.0460	STICKER OIL
1160	01.21.1.0050	FLAT WASHER M8 D9021 A2
9010	11.07.3.0020	CONTROL 03-TURBOVAC
9011	11.04.0.1650	PLUG BLAC R5
9012	11.04.0.1660	PLUG BLAC R6
9013	11.04.0.1670	PLUG BLAC R10
9020	12.07.0.7020	PACKING CONTROL + GLUE-LAYER
9040	11.02.0.1470	MAINSWITCH 3-P 25 A
9050	12.18.0.0080	CONTROLPANELHOLDER TURBOVAC
9051	96.03.2.1410	UPPERSTICKER TURBOVAC 03
9060	12.07.0.7030	PACKING COVER CONTROL + GLUE-LAYER
9070	02.06.3.0070	BRASS NUT 1/4"
9080	02.04.4.0010	SQUARE HOSE COUPLING 1/8"X4 EXT.
9090	11.06.0.0090	PLASTIC CHECKNUT PG 16
9100	12.07.0.9520	COVER CONTROLBOX

Partlist 430-STE

POS	ART. NR	DESCRIPTION
9110	01.09.1.0130A	CROSS RECESSED RAISED CHEESE HEAD SCREW M3.5X10
9120	11.06.0.0150	CABLE GLAND PG16 IP65 PLASTIC
9130	12.07.0.5010	SEALING WASHER 0-1/4
9140	02.06.3.0300	REDUCING RING 1/4"X1/8"
9150	02.04.4.0020	SQUARE HOSE COUPLING 1/8"X6 EXT.
9160	01.21.1.0020	FLAT WASHER M4 D9021 A2
9170	01.10.1.0010	HEXAGON NUT M3 DIN934 A2



C:\Working Folder\HFE Engineering\Exploded view\Sub assemblies\DIN rail & Schakelkasten\SBOX-II Switchbox model-II Table Top.idw



1	11.07.3.00--	03-besturing	1	
2	11.02.0.1470/1660	Lastscheider 3-polig 25 of 40 Amp	1	
3	12.05.0.5050	Silicone slang 3x6mm 60 shore	1	
4	12.07.0.7020	Pakking besturing + plaklaag	1	71011
5	12.18.0.0--	Houder besturing	1	55781
6	01.21.1.0010/0020	M3 of M4 Washer DIN 9021	7	
7	01.10.1.0010/0020	M3 of M4 Hex Nut DIN 934	7	
8	12.07.0.7030	Pakking deksel + plaklaag	1	71012
9	01.09.1.0130A	M3,5x10 Cross recessed raised cheese head screws DIN 7985 (H)	4	
POS	ART. NR	DESCRIPTION	QTY	DRW. NR

ALL DIMENSIONS IN mm
TOLERANCE: According to DIN ISO 2768 Part 1-m and Part 2-K

FORMAT: Oct2008

NAME **Assembly control B Sensor**

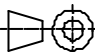
HFE VACUUM SYSTEMS

PO Box 2261

5202 CG 's-Hertogenbosch Netherlands

Phone: +31 (0)73 6 271 271

Fax: +31 (0)73 6 271 200

REV	DATE	DESCRIPTION	
REVISION HISTORY			
DRAWN: P.S.		MAT :	
DATE : 27-3-2009		DIM :	
CHECK :		FINISH:	
r		REM :	
		REPLACED BY	REPLACES
MS	SCALE 1:3	FORM A3	ART. NR S6>03-03-__
		REV	DRW.NR Ctrl-B-sensor-1 SHEET NR

SEC. VOLTAGE SEALTRANSFORMERS

MAX. TOTAL SEALLENGTH [mm]	SEC. VOLTAGE [V]
410 - 620	16
500 - 825	24
750 - 1030	32
1000 - 1250	48 (24+24)

PRIMAIR VOLTAGE, FUSES

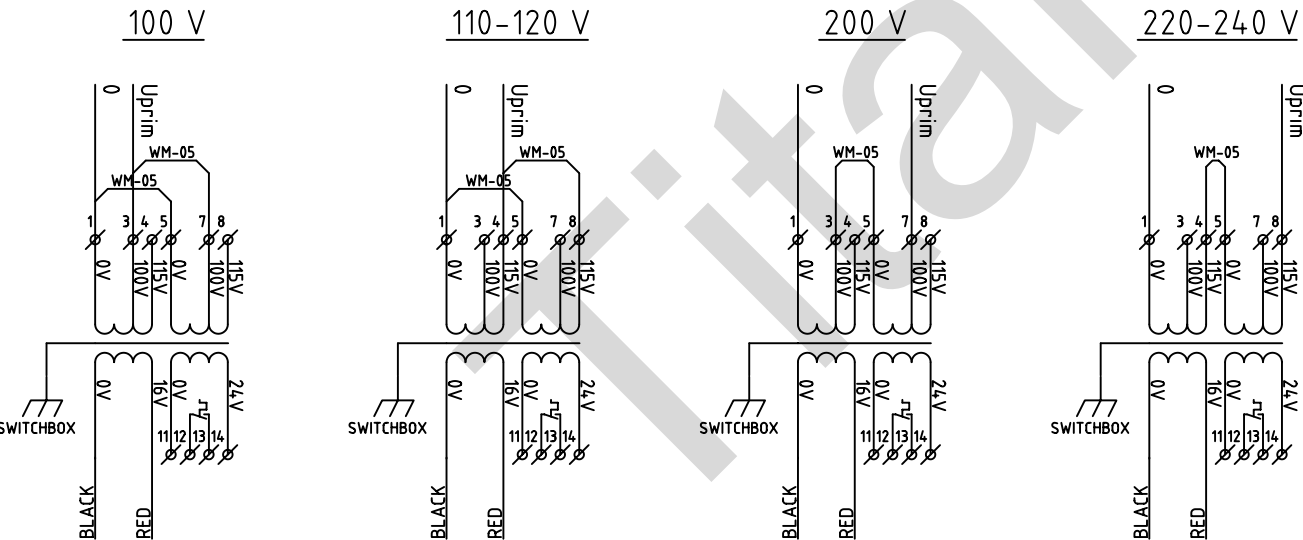
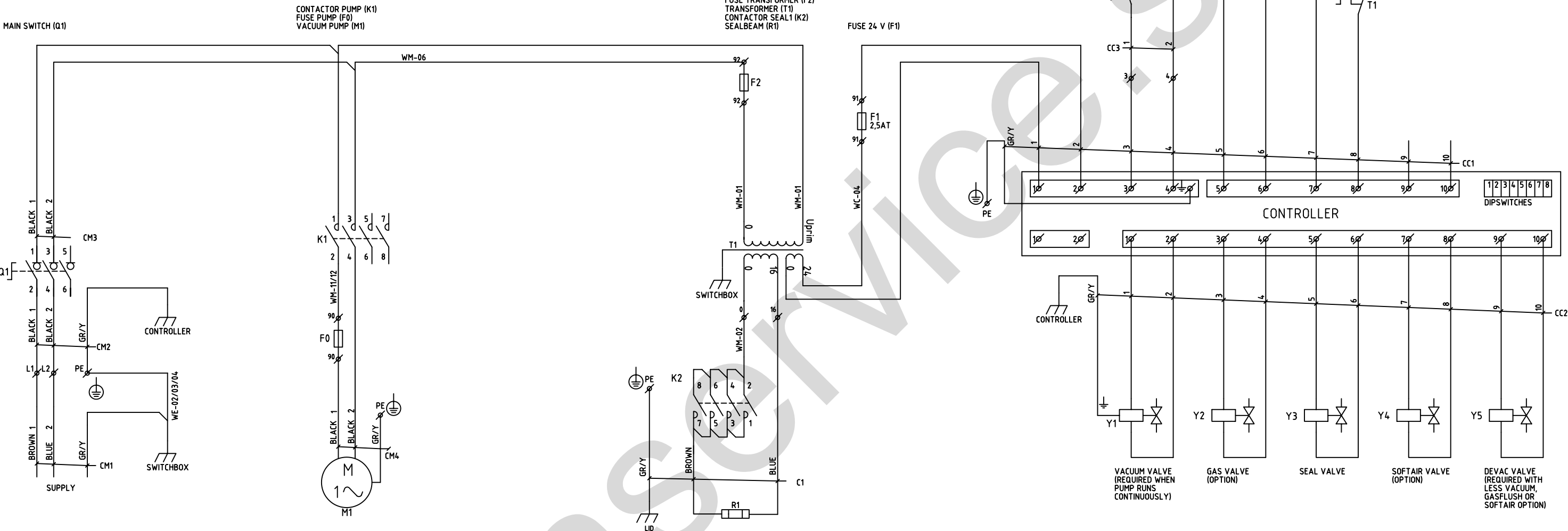
PRIM. VOLTAGE 50/60 Hz [Uprim] [V]	FUSES [A] (SLOW ACTING)			
	F0	F1	F2	
100/120 V	12,5 A	13 A	2,5 A	8 A
220-240 V	6,3 A	8 A	2,5 A	4 A

CABLE AND WIRE NAMES

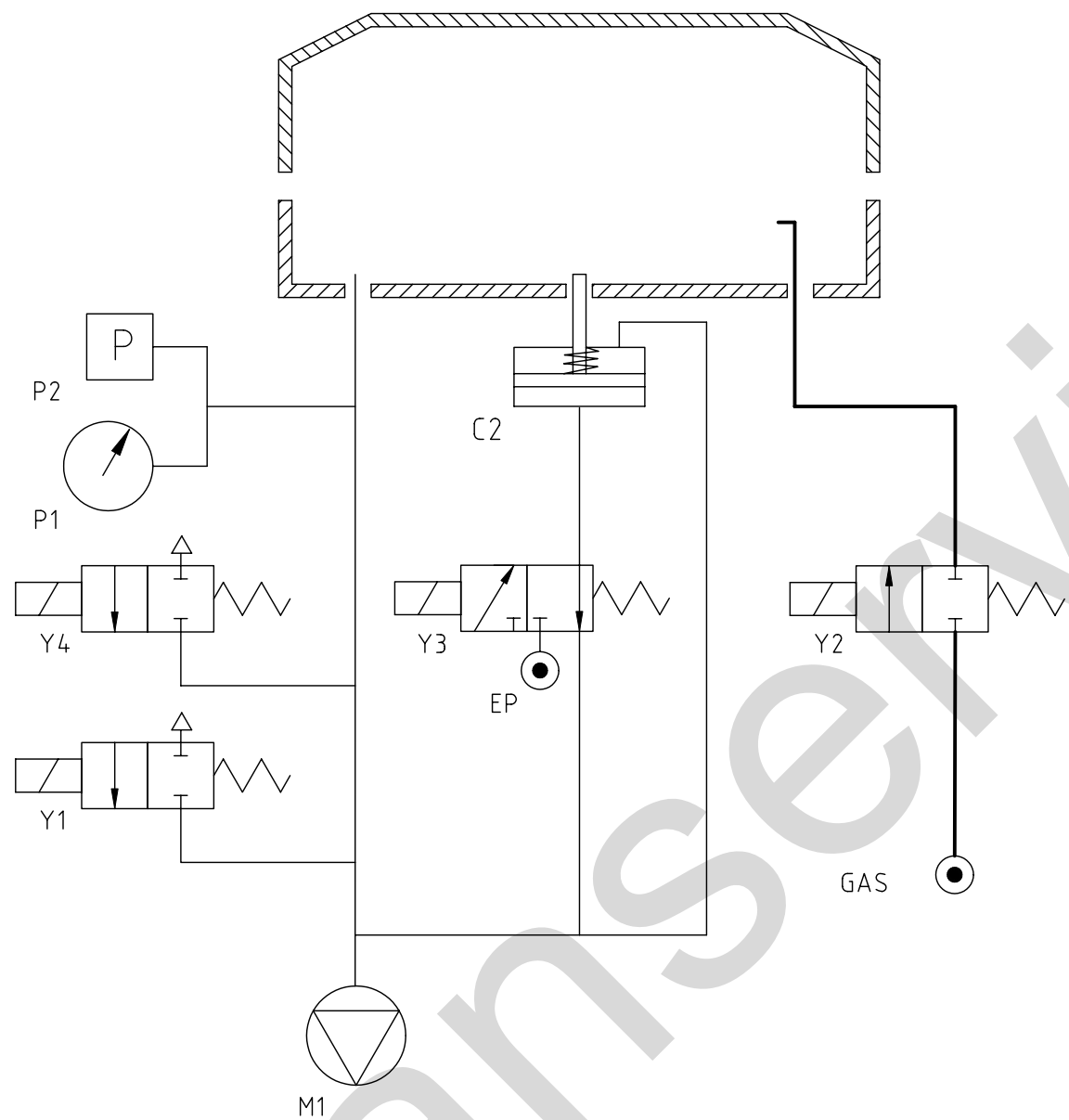
CODE	NAME
CM	MAIN CIRCUIT CABLE
CC	CONTROL CIRCUIT CABLE
WE	MISCELLANEOUS CABLE
WM	EARTH WIRE
WC	MAIN CIRCUIT WIRE

DIPSWITCH SETTINGS


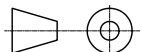
DIPSW. NUMB.	DIPSWITCH "ON"	DIPSWITCH "OFF"
1	VACUUM+ INSTALLED	VACUUM+ NOT INSTALLED
2	GASFLUSH INSTALLED	GASFLUSH NOT INSTALLED
3	SEAL1/2 INSTALLED	SEAL1/2 NOT INSTALLED
4	SOFT-AIR VALVE INSTALLED	SOFT-AIR VALVE NOT INSTALLED
5	PUMP RUNS CONTINUOUSLY	PUMP ON/OFF
6	SEALPRESSURE INSTALLED	SEALPRESSURE NOT INSTALLED
7	DEVAC VALVE INSTALLED	DEVAC VALVE NOT INSTALLED
8	VACUUM VALVE INSTALLED	VACUUM VALVE NOT INSTALLED



POS.	Qty.	NAME	ART.No°	DRW. No°	MATERIAL	DIMENSION
All dimensions in mm General tolerance ±0,5mm			DRAWN: P.S.		MAT. : -	
FORM: February 2002			DATE : 05-04-2004		DIM. : -	
NAME: Circuitdiagram 1~ Table Top ES/DS/TS (1x16 V)			CHECK : -		REM. : -	
HFE VACUUM SYSTEMS Po. Box 2261 5202 CG 's-Hertogenbosch Phone : +31 (0)73 6271271 Fax: +31 (0)73 6271200			FINISH : -		ART. No° -	
			SCALE: -	FORM. A3	REPLACED BY: -	REPLACES: -
			REV. -	DRW No° 8235-120102		



C2 = Seal cylinder
EP = Extra sealpressure
(optional)
M1 = Vacuum pump
P1 = Vacuumgauge analoog
(optional)
P2 = Vacuum sensor (optional)
Y1 = Devac valve
Y2 = Gas valve (optional)
Y3 = Seal valve
Y4 = Softair valve (optional)

POS.	Qty.	NAME	ART.No°	DRW. No°	MATERIAL	DIMENSION
All dimensions in mm General tolerance ±0,5mm FORM: February 2002			DRAWN: RdJ		MAT. : -	
			DATE : 05-01-2001		DIM. : -	
			CHECK : -		REM. : -	
NAME: Pneumatic diagram Table-Top Single chamber, Seal cilinder					FINISH : -	
					ART. No° -	
HFE VACUUM SYSTEMS  Po. Box 2261 5202 CG 's-Hertogenbosch Phone : +31 (0)73 6271271 Fax: +31 (0)73 6271200			SCALE: -	FORM. A3	REPLACED BY: -	REPLACES: -
				REV. -	DRW No° TTSCCIL-010105	