



***ED SERIES***  
***Electric Designer***

**PARTS LIST**

**Toll Free Phone, (US & Canada): (800) 427-6668**

**Toll Free Fax, (US & Canada): (800) 361-7745**

**<http://www.garland-group.com>**



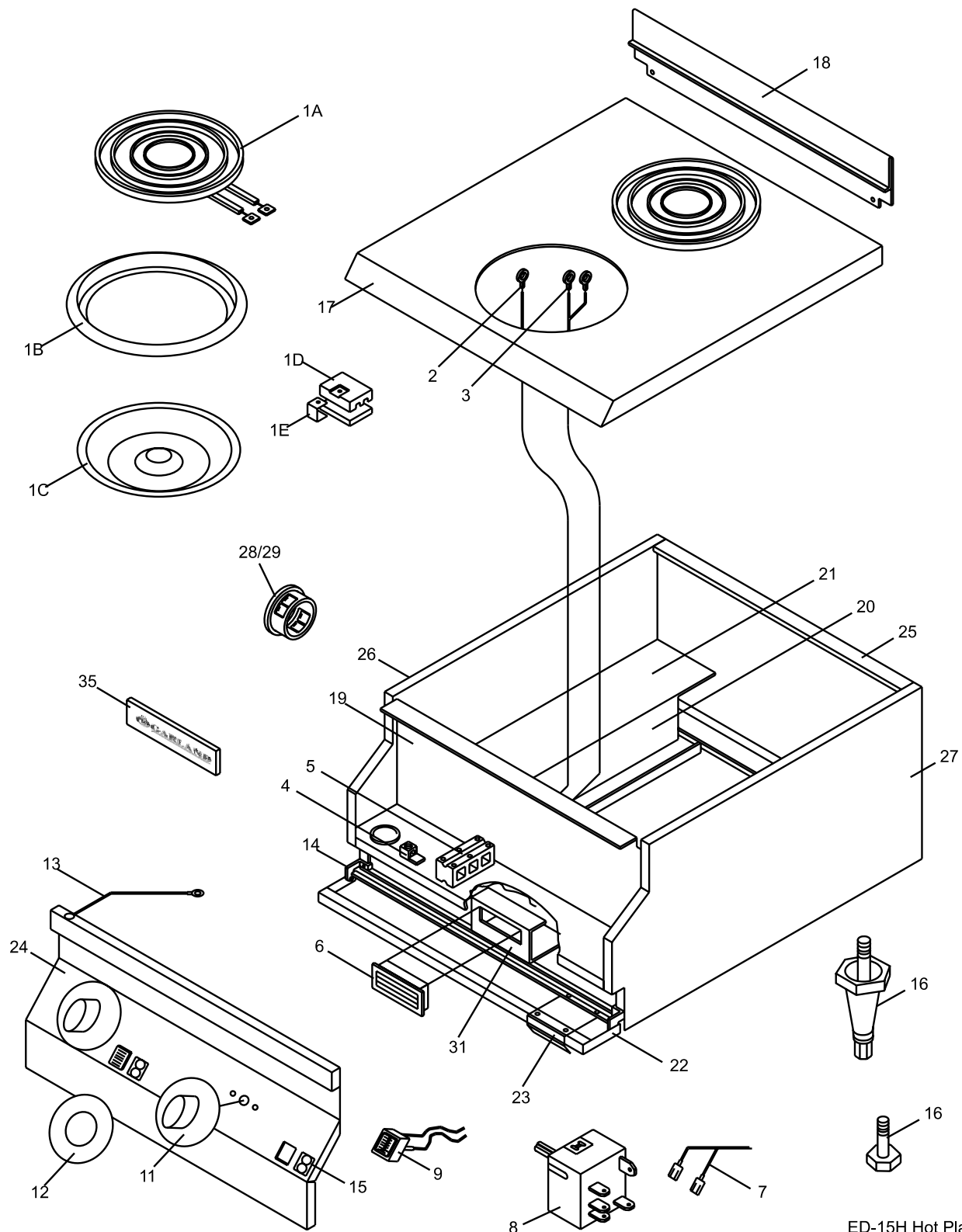


# ***ED SERIES***

## ***Electric Designer***

### *Contents:*

|   |         |
|---|---------|
| HOT PLATE ED-15H .....                                    | Page 4  |
| HOT PLATES ED-15HSE, ED-15THSE & EDU-15HSE .....          | Page 8  |
| GRIDDLES ED/EDU-15G, ED/EDU-24G, ED/EDU-36G .....         | Page 12 |
| BROILER ED/EDU-15B, ED/EDU-30B, ED/EDU-42B .....          | Page 16 |
| FOOD WARMER ED/EDU-15W/ED-15WP .....                      | Page 20 |
| ELECTRIC SUPER FRYER ED-15SF, ED-30SFT, EDU-18-36SF ..... | Page 24 |
| ELECTRIC FRYER ED-15-30F, EDU-18-36FT .....               | Page 30 |
| Revision History .....                                    | Page 35 |



# GARLAND PARTS IDENTIFICATION

*HOT PLATE ED-15H*

*ED Series*

| ITEM                    | PART #   | DESCRIPTION  | MODEL ED-15H |
|-------------------------|----------|--|--------------|
|                         |          |  | QTY          |
| 1A                      | 2195000  | 8" Surface Element 208V (2.1Kw)                        | 2            |
|                         | 2195001  | 8" Surface Element 240V (2.1Kw)                        | 2            |
|                         | 2195002  | 8" Surface Element 220V (2.1Kw)                        | 2            |
| 1B                      | 2602399  | 8" Ring Assembly                                       | 2            |
| 1C                      | 2195300  | 8" Pan Reflector                                       | 2            |
| 1D                      | 2195800  | Split Terminal Block (Small)                           | 2            |
| 1E                      | 2627700  | Terminal Block Clip                                    | 2            |
| 2                       | 2147703  | Ground Wire  | 2            |
| 3                       | 2148100  | Element Wires Harness                                  | 1            |
| 4                       | G01500-1 | Ground Terminal 55AMP                                  | 1            |
| 5                       | 2147300  | Terminal Block 3 Circuit                               | 1            |
|                         | 2147302  | Terminal Block 3 Circuit Export                        | 1            |
| 6                       | 078174-1 | Magnetic Door Catch                                    | 1            |
| 7                       | 2148000  | Primary Wires  | 1            |
| 8                       | G03185-2 | Infinite Switch-240 Volt                               | 2            |
| 9                       | 2138504  | Pilot Green  | 2            |
| 11                      | 2138700  | Knob   | 2            |
| 12                      | 2139000  | Dial Insert  | 2            |
| 13                      | 2147700  | Ground Wire  | 1            |
| 14                      | 2149400  | Door Hinge Right Hand                                  | 1            |
|                         | 2149401  | Door Hinge Left Hand                                   | 1            |
| 15                      | 2150000  | Element Identification Plate                           | 2            |
| 16                      | F157     | Bolt-3/8-16X1 1/16"                                    | 4            |
|                         | 078109-1 | Plastic Leg (Optional)                                 | 4            |
| 17                      | 2132699  | Main Top Assembly                                      | 1            |
| 18                      | 2168000  | Back Splash to 12/07/95                                | 1            |
|                         | 2385500  | Back Splash from 12/07/95                              | 1            |
| 19                      | 2132798  | Control Shield Assembly to 2/23/93                     | 1            |
|                         | 2132799  | Control Shield Assembly from 2/23/93 to 4/04/94        | 1            |
|                         | 2351899  | Control Shield Assembly from 4/04/94                   | 1            |
| 20                      | 2149600  | Wireway  | 1            |
| 21                      | 2156500  | Body Shield  | 1            |
| 22                      | 2149299  | Door Assembly Enamelled 15"                            | 1            |
| 23                      | 2149300  | Door Pull  | 1            |
| 24                      | 2137700  | Control Panel to 4/04/94                               | 1            |
|                         | 2349600  | Control Panel from 4/04/94                             | 1            |
| 25                      | 2180900  | Body Back & Bottom                                     | 1            |
|                         | 2180901  | Body Back & Bottom S/S                                 | 1            |
| 26                      | 2180699  | Side Assembly LH - Black (Code 9402CG0180) to 02/21/94 | 1            |
|                         | 2180698  | Side - Left Assembly S/S (Code 9402CG0180) to 02/21/94 | 1            |
|                         | 2349498  | Body Side Assembly LH (Code 9402CG0181) from 02/21/94  | 1            |
|                         | 2349496  | Body Side Assembly LH (Code 9402CG0181) from 02/21/94  | 1            |
| * NOT ILLUSTRATED       |          |  |              |
| RECOMMENDED STOCK PARTS |          |  |              |

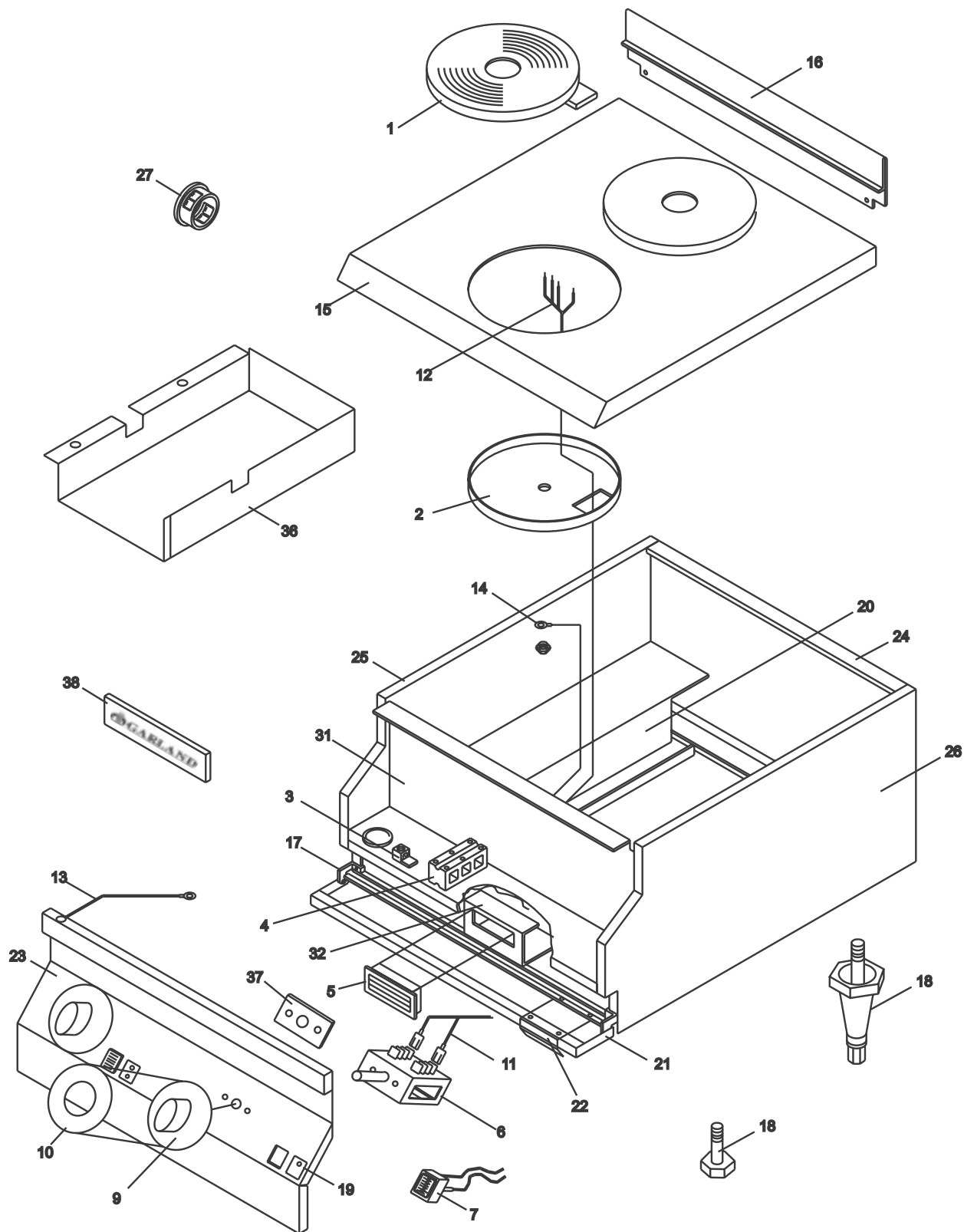
# GARLAND PARTS IDENTIFICATION

*HOT PLATE ED-15H*

*ED Series*

| ITEM                    | PART #   | DESCRIPTION  | MODEL ED-15H |
|-------------------------|----------|--|--------------|
|                         |          |  | QTY          |
| 27                      | 2180599  | Side Assembly RH (Code 9402CG0180)<br>to 02/21/94          | 1            |
|                         | 2180598  | Side - Right Assembly S/S (Code 9402CG0180)<br>to 02/21/94 | 1            |
|                         | 2349499  | Body Side Assembly RH (Code 9402CG0181)<br>from 02/21/94   | 1            |
|                         | 2349497  | Body Side Assembly RH (Code 9402CG0181)<br>from 02/21/94   | 1            |
| 28                      | G01487-8 | Heyco Bushing 11/16 ID                                     | 1            |
| 29                      | G01487-5 | Heyco Bushing 1-5/16 ID                                    | 1            |
| 30*                     | 2174500  | Joiner Tab   | 2            |
| 31                      | 2139600  | Magnet Mounting Bracket<br>to 5/07/91                      | 1            |
|                         | 2183500  | Magnet Bracket<br>from 5/07/91                             | 1            |
| 32*                     | 2149800  | Access Panel   | 1            |
| 33*                     | 2171400  | Terminal Block Mounting Bracket                            | 1            |
| 34*                     | 2139700  | Control Panel Clip   | 2            |
| 35                      | 1902919  | Garland Nameplate 4"                                       | 1            |
| 36*                     | 2146100  | Wiring Diagram (Domestic) ED-15H 208V                      |              |
| 37*                     | 2146200  | Wiring Diagram (Export) ED-15H 220V                        |              |
| * NOT ILLUSTRATED       |          |  |              |
| RECOMMENDED STOCK PARTS |          |  |              |

## *NOTES*





**GARLAND PARTS IDENTIFICATION**  
HOT PLATES ED-15HSE, ED-15THSE & EDU-15HSE

| ITEM | PART #   | DESCRIPTION                                | MODEL    |           |           |
|------|----------|--|----------|-----------|-----------|
|      |          |  | QTY      |           |           |
|      |          |  | ED-15HSE | ED-15THSE | EDU-15HSE |
| 1    | 2590200  | Sealed Element 208                         |          | 2         |           |
|      |          | Tim Hortons Only                           |          |           |           |
|      | 2590201  | Sealed Element 220                         |          | 2         |           |
|      |          | Tim Hortons Only                           |          |           |           |
|      | 2590202  | Sealed Element 240                         |          | 2         |           |
|      |          | Tim Hortons Only                           |          |           |           |
|      | 2147100  | Sealed Element 208                         | 2        |           |           |
| 2    | 2147101  | Sealed Element 220                         | 2        |           | 2         |
|      | 2147102  | Sealed Element 240                         | 2        |           | 2         |
|      | 2147200  | Screening Sheet 237MM                      | 2        |           | 2         |
| 3    | 2147201  | Screening Sheet 180MM                      |          | 2         |           |
|      |          | Tim Hortons Only                           |          |           |           |
| 4    | G01500-1 | Ground Terminal 55AMP                      | 1        | 1         | 1         |
| 5    | 2147300  | Terminal Block 3 Circuit                   | 1        | 1         |           |
|      | 2147302  | Terminal Block 3 Circuit Export            | 1        |           | 1         |
| 6    | 078174-1 | Magnetic Door Catch                        | 1        | 1         | 1         |
| 7    | 2146900  | 6 Heat Switch                              | 2        | 2         | 2         |
| 8    | 2138504  | Pilot Green                                | 2        | 2         | 2         |
| 9    | 2138700  | Knob NLA Use 3043200                       | 2        | 2         | 2         |
| 10   | 2139100  | Dial Insert                                | 2        | 2         | 2         |
| 11   | 2147800  | Primary Wires Harness                      | 1        | 1         | 1         |
| 12   | 2147900  | Element Wires Harness                      | 2        | 2         | 2         |
| 13   | 2147702  | Ground Wire Rear                           | 2        | 2         | 2         |
| 14   | 2147700  | Ground Wire                                | 1        | 1         | 1         |
| 15   | 2137399  | Main Top Assembly                          | 1        |           | 1         |
|      | 2137398  | Main Top Assembly                          |          | 1         |           |
|      |          | Tim Hortons Only                           |          |           |           |
| 16   | 2168000  | Back Splash to 12/07/95                    | 1        |           | 1         |
|      | 2385500  | Back Splash from 12/07/95                  | 1        | 1         | 1         |
| 17   | 2149400  | Door Hinge Right Hand                      | 1        | 1         | 1         |
|      | 2149401  | Door Hinge Left Hand                       | 1        | 1         | 1         |
| 18   | F157     | Bolt-3/8-16X1 1/16"                        | 4        | 4         | 4         |
|      | 078109-1 | Plastic Leg (Optional)                     | 4        | 4         | 4         |
| 19   | 2150000  | Element Identification Plate               | 2        | 2         | 2         |
| 20   | 2149600  | Wireway                                    | 1        | 1         | 1         |
| 21   | 2149299  | Door Assembly Enamelled 15"                | 1        | 1         | 1         |
| 22   | 2149300  | Door Pull                                  |          |           |           |
|      |          | Up to 3/06/00                              |          |           |           |
|      | 2149301  | Door Handle                                | 1        | 1         | 1         |
|      |          | From 3/06/00                               |          |           |           |
| 23   | 2137700  | Control Panel to 4/04/94                   | 1        |           |           |
|      | 2349600  | Control Panel from 4/04/94                 | 1        | 1         |           |
|      | 2349601  | Control Panel                              |          |           | 1         |
| 24   | 2180900  | Body Back & Bottom                         | 1        | 1         | 1         |
|      | 2180901  | Body Back & Bottom S/S                     | 1        | 1         | 1         |
| 25   | 2180699  | Side Assembly LH - Black (Code 9402CG0180) | 1        | 1         |           |
|      |          | Up to 02/21/94                             |          |           |           |
|      | 2180698  | Side - Left Assembly S/S (Code 9402CG0180) | 1        | 1         |           |
|      |          | Up to 02/21/94                             |          |           |           |
|      | 2349498  | Body Side Assembly LH (Code 9402CG0181)    | 1        | 1         | 1         |
|      |          | From 02/21/94                              |          |           |           |
|      | 2349496  | Body Side Assembly LH (Code 9402CG0181)    | 1        | 1         | 1         |
|      |          | From 02/21/94                              |          |           |           |

\* NOT ILLUSTRATED

**RECOMMENDED STOCK PARTS**

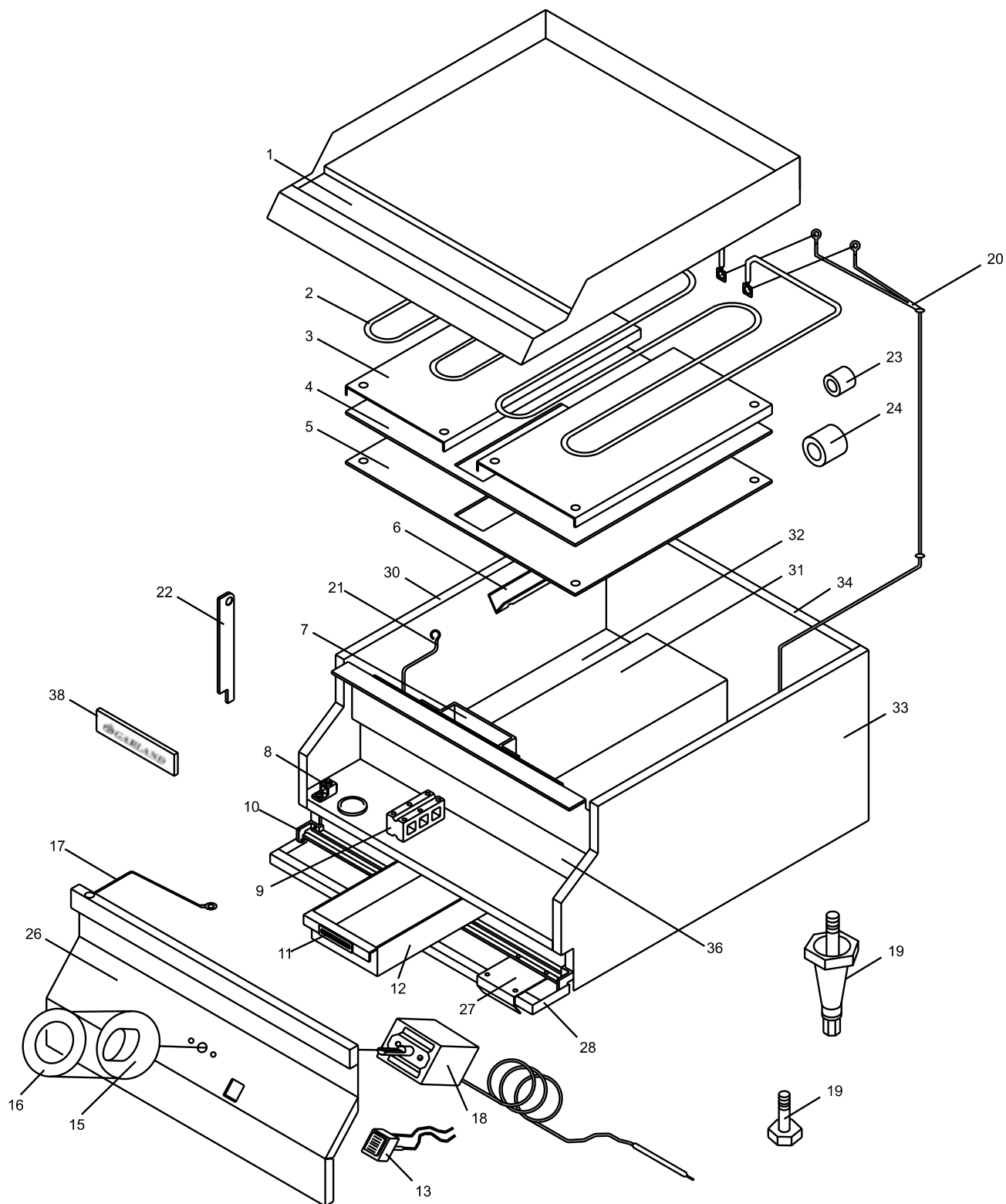
**GARLAND PARTS IDENTIFICATION**  
**HOT PLATES ED-15HSE, ED-15THSE & EDU-15HSE**

| ITEM | PART #   | DESCRIPTION                                     | MODEL    |           |           |
|------|----------|---|----------|-----------|-----------|
|      |          |   | QTY      |           |           |
|      |          |   | ED-15HSE | ED-15THSE | EDU-15HSE |
| 26   | 2180599  | Side Assembly RH (Code 9402CG0180)              | 1        | 1         |           |
|      |          | Up to 02/21/94                                  |          |           |           |
|      | 2180598  | Side - Right Assembly S/S (Code 9402CG0180)     | 1        | 1         |           |
|      |          | Up to 02/21/94                                  |          |           |           |
|      | 2349499  | Body Side Assembly RH (Code 9402CG0181)         | 1        | 1         | 1         |
|      |          | From 02/21/94                                   |          |           |           |
|      | 2349497  | Body Side Assembly RH (Code 9402CG0181)         | 1        | 1         | 1         |
|      |          | From 02/21/94                                   |          |           |           |
| 27   | G01487-8 | Heyco Bushing 11/16 ID                          | 1        | 1         | 1         |
| 28*  | G01487-5 | Heyco Bushing 1-5/16 ID                         | 1        | 1         | 1         |
| 29*  | 2139700  | Control Panel Clip                              | 2        | 2         | 2         |
| 30*  | 2174500  | Joiner Tab                                      | 2        | 2         | 2         |
| 31   | 2132799  | Control Shield Assembly from 2/23/93 to 4/04/94 | 1        | 1         |           |
|      | 2351899  | Control Shield Assembly from 4/04/94            | 1        | 1         | 1         |
| 32   | 2139600  | Magnet Mounting Bracket                         | 1        | 1         | 1         |
|      |          | Up to 5/07/91                                   |          |           |           |
|      | 2183500  | Magnet Bracket                                  | 1        | 1         | 1         |
|      |          | From 5/07/91                                    |          |           |           |
| 33*  | 2149800  | Access Panel                                    | 1        | 1         | 1         |
| 34*  | 2150200  | Bottom Baffle                                   | 1        | 1         | 1         |
| 35*  | 2171400  | Terminal Block Mounting Bracket                 | 1        | 1         | 1         |
| 36   | 2608700  | Wireway   |          |           | 1         |
| 37   | 2618500  | Switch Seal                                     |          |           | 2         |
| 38   | 1902919  | Garland Nameplate 4"                            | 1        | 1         | 1         |
|      |          | Up to 10/01/01                                  |          |           |           |
|      | 3077101  | Garland Nameplate                               |          |           |           |
|      |          | From 10/01/01                                   |          |           |           |
| 39*  | 2618600  | Side Seal                                       |          |           | 2         |
| 40*  | 2618700  | Front Seal                                      |          |           | 1         |
| 41*  | 2146401  | Wiring Diagram, EDU-15HSE-CE V                  |          |           | 1         |
| 42*  | 2146300  | Wiring Diagram ED-15HSE 208DOM                  | 1        |           |           |
| 43*  | 2146400  | Wiring Diagram ED-15HSE 220EXP                  | 1        |           |           |
| 44*  | 2146301  | Wiring Diagram                                  |          | 1         |           |
|      |          | Tim Hortons Only                                |          |           |           |

\* NOT ILLUSTRATED

**RECOMMENDED STOCK PARTS**

## *NOTES*



# GARLAND PARTS IDENTIFICATION

GRIDDLES ED/EDU-15G, ED/EDU-24G, ED/EDU-36G

ED Series

| ITEM                    | PART #     | DESCRIPTION                      | MODEL          |                |                |
|-------------------------|------------|----------------------------------|----------------|----------------|----------------|
|                         |            |                                  | QTY            |                |                |
|                         |            |                                  | ED/EDU<br>-15G | ED/EDU<br>-24G | ED/EDU<br>-36G |
| 1                       | 2142699    | Griddle Assembly 15"             | 1              |                |                |
|                         | 2220399    | 15" Grooved Griddle Assembly     | 1              |                |                |
|                         | 2151097    | Griddle Assembly 24"             |                | 1              |                |
|                         | 2220499    | 24" Griddle Assy Fully Grooved   |                | 1              |                |
|                         | 2220498    | 24" Griddle Assy 12" Grooved LT  |                | 1              |                |
|                         | 2220497    | 24" Griddle Assy 12" Grooved RT  |                | 1              |                |
|                         | 2151197    | Griddle Assembly 36"             |                |                | 1              |
|                         | 2220599    | 36" Griddle Assy Fully Grooved   |                |                | 1              |
|                         | 2220597    | 36" Griddle Assy. 24" Grooved RT |                |                | 1              |
|                         | 2220598    | 36" Griddle Assy. 24" Grooved LT |                |                | 1              |
|                         | 2220595    | 36" Griddle Ass'y 12" Grooved LT |                |                | 1              |
|                         | 2220596    | 36" Griddle Ass'y 12" Grooved RT |                |                | 1              |
| 2                       | G01816-1   | Element 208V,3350W               | 1              | 2              | 3              |
|                         | G01816-2   | Element 240V,3350W               | 1              | 2              | 3              |
|                         | G01816-3   | Element 220V,3350W               | 1              | 2              | 3              |
|                         | G01816-4   | Element 230 Volts                | 1              | 2              | 3              |
|                         |            | EDU Models Only                  |                |                |                |
| 3                       | G01884-1-6 | Element Clamp                    | 2              | 4              | 6              |
| 4                       | 079113-1   | Fibrefrac 970J 1/8"              | 1              | 2              | 3              |
| 5                       | 2142700    | Element Cover                    | 1              | 2              | 3              |
| 6                       | G01891-1-6 | Bulb Clamp                       | 1              | 2              | 3              |
| 7                       | 2155499    | Grease Chute Assembly            | 1              | 1              | 1              |
| 8                       | G01500-1   | Ground Terminal 55AMP            | 1              | 1              | 1              |
| 9                       | 2147300    | Terminal Block 3 Circuit         | 1              | 1              | 1              |
|                         | 2147302    | Terminal Block 3 Circuit Export  | 1              | 1              | 1              |
|                         | 2147301    | Terminal Block-4 Circuit         | 1              | 1              | 1              |
| 10                      | 2149400    | Door Hinge Right Hand            | 1              | 1              | 1              |
|                         | 2149401    | Door Hinge Left Hand             | 1              | 1              | 1              |
| 11                      | 078174-1   | Magnetic Door Catch              | 1              | 1              | 1              |
| 12                      | 2142800    | Grease Tray                      | 1              | 1              | 1              |
| 13                      | 2138500    | Pilot Amber                      | 1              | 2              | 3              |
| 15                      | 2138700    | Knob                             | 1              | 2              | 3              |
| 16                      | 2138800    | Dial Insert Degrees F            | 1              | 2              | 3              |
|                         | 2138801    | Dial Insert Degrees C            | 1              | 2              | 3              |
| 17                      | 2147700    | Ground Wire                      | 1              | 1              | 1              |
| 18                      | G2674-1    | Thermostat G1 150F TO 450F       | 1              | 2              | 3              |
| 19                      | F157       | Bolt-3/8-16X1 1/16"              | 4              | 4              | 4              |
|                         | 078109-1   | Plastic Leg (Optional)           | 4              | 4              | 4              |
| 20                      | 2158900    | Wire Harness                     | 1              |                |                |
|                         | 2158901    | Wire Harness                     |                | 1              |                |
|                         | 2158902    | Wire Harness                     |                |                | 1              |
| 21                      | H87        | 14 Ga Nickel Wire Bare 651ALOY   | 1              | 1              | 1              |
| * NOT ILLUSTRATED       |            |                                  |                |                |                |
| RECOMMENDED STOCK PARTS |            |                                  |                |                |                |

# GARLAND PARTS IDENTIFICATION

GRIDDLES ED/EDU-15G, ED/EDU-24G, ED/EDU-36G

*ED Series*

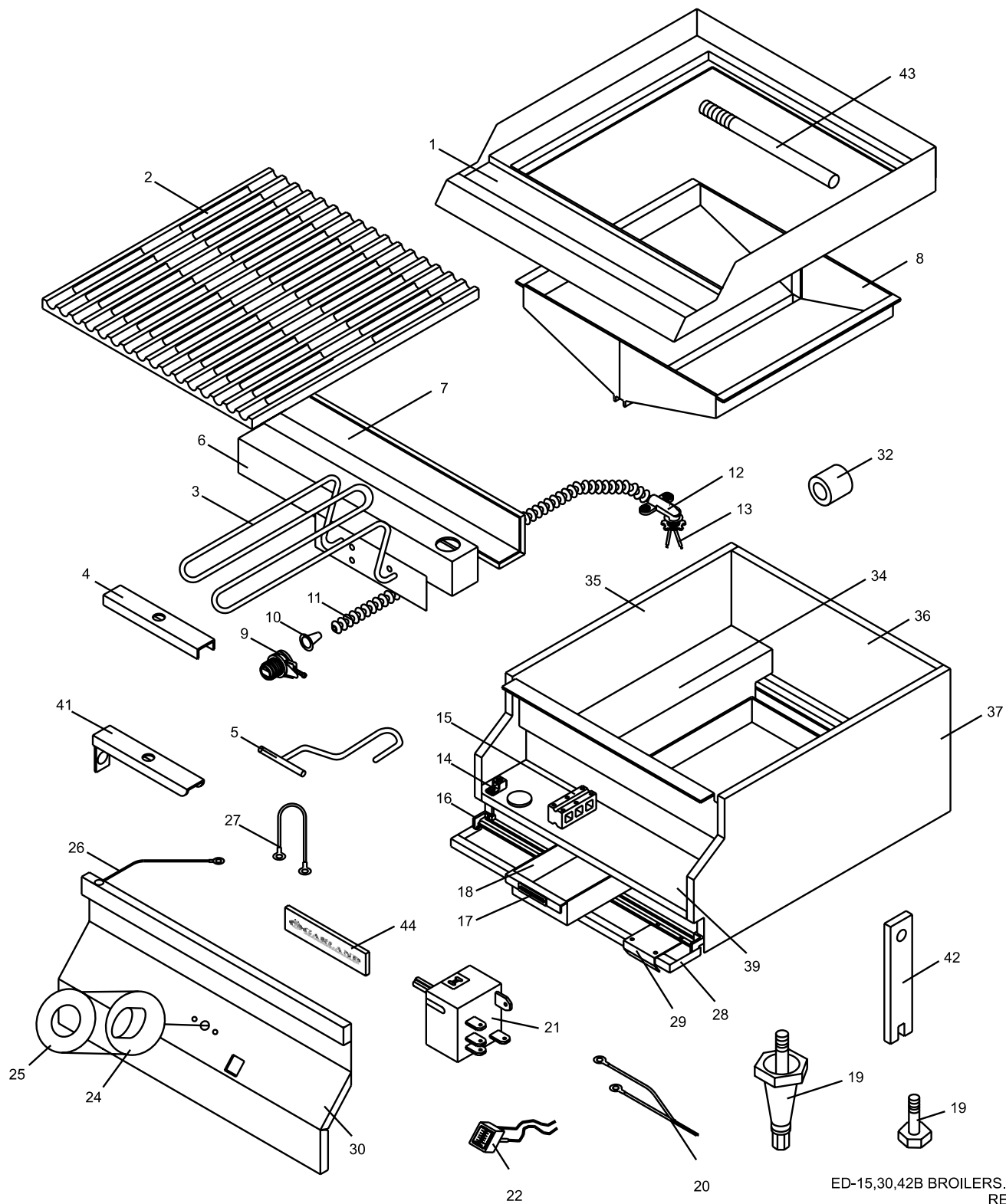
| ITEM                    | PART #    | DESCRIPTION                                 | MODEL          |                |                |
|-------------------------|-----------|---|----------------|----------------|----------------|
|                         |           |   | QTY            |                |                |
|                         |           |   | ED/EDU<br>-15G | ED/EDU<br>-24G | ED/EDU<br>-36G |
| 22                      | G2402-3-5 | Top Support Prop                            | 1              | 1              | 1              |
| 23                      | G01487-8  | Heyco Bushing 11/16 ID                      | 1              | 2              | 3              |
| 24                      | G01487-5  | Heyco Bushing 1-5/16 ID                     | 1              | 1              | 1              |
| 25*                     | 2139700   | Control Panel Clip                          | 2              | 2              | 3              |
| 26                      | 2137900   | Control Panel                               | 1              |                |                |
|                         |           | Up to 5/06/94                               |                |                |                |
|                         | 2349700   | Control Panel 15"                           | 1              |                |                |
|                         |           | From 5/06/94                                |                |                |                |
|                         | 2138000   | Control Panel                               |                | 1              |                |
|                         |           | Up to 2/23/94                               |                |                |                |
|                         | 2349800   | Control Panel 24"                           |                | 1              |                |
|                         |           | From 2/23/94                                |                |                |                |
|                         | 2138300   | Control Panel                               |                |                | 1              |
|                         |           | Up to 2/23/94                               |                |                |                |
|                         | 2350100   | Control Panel 36"                           |                |                | 1              |
|                         |           | From 2/23/94                                |                |                |                |
| 27                      | 2149300   | Door Pull                                   | 1              | 1              | 1              |
| 28                      | 2149299   | Door Assembly Enamelled 15"                 | 1              |                |                |
|                         | 2149297   | Door Assembly Enamelled 24"                 |                | 1              |                |
|                         | 2149295   | Door Assembly Enamelled 36"                 |                |                | 1              |
| 29*                     | 2372800   | Body Side Stiffener                         | 2              | 2              | 2              |
| 30                      | 2180699   | Side Assembly LH - Black (Code 9402CG0180)  | 1              | 1              | 1              |
|                         | 2180698   | Side - Left Assembly S/S (Code 9402CG0180)  | 1              | 1              | 1              |
|                         | 2349498   | Body Side Assembly LH (Code 9402CG0181)     | 1              | 1              | 1              |
|                         | 2349496   | Body Side Assembly LH (Code 9402CG0181)     | 1              | 1              | 1              |
| 31                      | 2156300   | Tray Cover                                  | 1              | 1              | 1              |
| 32                      | 2149600   | Wireway                                     | 1              | 1              | 1              |
| 33                      | 2180599   | Side Assembly RH (Code 9402CG0180)          | 1              | 1              | 1              |
|                         | 2180598   | Side - Right Assembly S/S (Code 9402CG0180) | 1              | 1              | 1              |
|                         | 2349499   | Body Side Assembly RH (Code 9402CG0181)     | 1              | 1              | 1              |
|                         | 2349497   | Body Side Assembly RH (Code 9402CG0181)     | 1              | 1              | 1              |
| 34                      | 2180900   | Body Back & Bottom                          | 1              |                |                |
|                         | 2180901   | Body Back & Bottom S/S                      | 1              |                |                |
|                         | 2181100   | Body Back & Bottom (24G)                    |                | 1              |                |
|                         | 2181101   | Body Back & Bottom S/S                      |                | 1              |                |
|                         | 2181400   | Body Back & Bottom (36G)                    |                |                | 1              |
|                         | 2181401   | Body Back & Bottom S/S                      |                |                | 1              |
| 35*                     | 2155700   | Grease Tray Slide                           | 2              | 2              | 2              |
| 36                      | 2156199   | Control Shield Assembly                     | 1              |                |                |
|                         |           | Up to 3/03/94                               |                |                |                |
|                         | 2352299   | Control Shield Assembly                     | 1              |                |                |
|                         |           | From 3/03/94                                |                |                |                |
|                         | 2156999   | Control Shield Assembly                     |                | 1              |                |
| Up to 2/23/94           |           |   |                |                |                |
| * NOT ILLUSTRATED       |           |   |                |                |                |
| RECOMMENDED STOCK PARTS |           |   |                |                |                |

## GARLAND PARTS IDENTIFICATION

*GRIDDLES ED/EDU-15G, ED/EDU-24G, ED/EDU-36G*

*ED Series*

| ITEM                    | PART #  | DESCRIPTION                     | MODEL          |                |                |
|-------------------------|---------|---------------------------------|----------------|----------------|----------------|
|                         |         |                                 | QTY            |                |                |
|                         |         |                                 | ED/EDU<br>-15G | ED/EDU<br>-24G | ED/EDU<br>-36G |
| 36<br>Cont.             | 2352499 | Control Shield Assembly         |                | 1              |                |
|                         |         | From 2/23/94                    |                |                |                |
|                         | 2156699 | Control Shield Assembly         |                |                | 1              |
|                         |         | Up to 2/23/94                   |                |                |                |
|                         | 2352399 | Control Shield Assembly         |                |                | 1              |
|                         |         | From 2/23/94                    |                |                |                |
| 37*                     | 2174500 | Joiner Tab                      | 2              | 2              | 2              |
| 38                      | 1902919 | Garland Nameplate 4"            | 1              | 1              | 1              |
| 39*                     | 2144500 | Wiring Diagram                  |                |                |                |
| 40*                     | 2144600 | Wiring Diagram                  |                |                |                |
| 41*                     | 2144601 | Wiring Diagram, EDU-15G-CE VER. |                |                |                |
| 42*                     | 2144700 | Wiring Diagram                  |                |                |                |
| 43*                     | 2144800 | Wiring Diagram                  |                |                |                |
| 44*                     | 2144801 | Wiring Diagram, EDU-24G-CE VER  |                |                |                |
| 45*                     | 2144900 | Wiring Diagram                  |                |                |                |
| 46*                     | 2145000 | Wiring Diagram                  |                |                |                |
| 47*                     | 2145001 | Wiring Diagram, EDU-36G-CE VER  |                |                |                |
| * NOT ILLUSTRATED       |         |                                 |                |                |                |
| RECOMMENDED STOCK PARTS |         |                                 |                |                |                |





# GARLAND PARTS IDENTIFICATION

*BROILER ED/EDU-15B, ED/EDU-30B, ED/EDU-42B*

*ED Series*

| ITEM                    | PART #    | DESCRIPTION                     | MODEL          |                |                |
|-------------------------|-----------|---------------------------------|----------------|----------------|----------------|
|                         |           |                                 | QTY            |                |                |
|                         |           |                                 | ED/EDU<br>-15B | ED/EDU<br>-30B | ED/EDU<br>-42B |
| 1                       | 2134899   | Main Top Assembly               | 1              |                |                |
|                         | 2161499   | Main Top Assembly               |                | 1              |                |
|                         | 2165399   | Main Top Assembly               |                |                | 1              |
| 2                       | G0844-1   | Broiler Grate                   | 2              | 4              | 6              |
| 3                       | G0875-2   | Element Broiler 208V, 1.35KW    | 2              | 4              | 6              |
|                         | G0875-1   | Element Broiler 240V, 1.35KW    | 2              | 4              | 6              |
|                         | G0875-4   | Element Broiler 220V, 1.35KW    | 2              | 4              | 6              |
|                         | G0875-5   | Element Assy, 230V, 1350W       | 2              | 4              | 6              |
|                         |           | EDU Models Only                 |                |                |                |
| 4                       | G0857-1-9 | Element Clamp                   | 5              | 10             | 15             |
| 5                       | 2135799   | Grate Handle Assembly           | 1              | 1              | 1              |
| 6                       | 2135400   | Element Terminal Box            | 1              | 2              | 3              |
| 7                       | 2135500   | Element Terminal Box Cover      | 1              | 2              | 3              |
| 8                       | 2159499   | Grease Collector Assembly       | 1              |                |                |
|                         | 2162199   | Grease Collector Assembly       |                | 1              |                |
|                         | 2165899   | Grease Collector Assembly       |                |                | 1              |
| 9                       | G01497-1  | Bx Connector Straight 3/8".     | 1              | 2              | 3              |
| 10                      | 1029600   | Antishorts #1                   | 2              | 4              | 6              |
| 11                      | 1029400   | BX Cable 3/8"                   | 1              | 2              | 3              |
| 12                      | 1028500   | Connector 3/8" 90 DEG. Romex    | 1              | 2              | 3              |
| 13                      | 2159100   | Element Wires                   | 1              | 2              | 3              |
| 14                      | G01500-1  | Ground Terminal 55AMP           | 1              | 1              | 1              |
| 15                      | 2147300   | Terminal Block 3 Circuit        | 1              | 1              | 1              |
|                         | 2147302   | Terminal Block 3 Circuit Export | 1              | 1              |                |
|                         | 2147301   | Terminal Block-4 Circuit        |                |                | 1              |
| 16                      | 2149400   | Door Hinge Right Hand           | 1              | 1              | 1              |
|                         | 2149401   | Door Hinge Left Hand            | 1              | 1              | 1              |
| 17                      | 078174-1  | Magnetic Door Catch             | 1              | 1              | 1              |
| 18                      | 2142800   | Grease Tray                     | 1              | 1              |                |
|                         | 2222900   | Grease Tray                     |                |                | 1              |
| 19                      | F157      | Bolt-3/8-16X1 1/16"             | 4              | 4              | 4              |
|                         | 078109-1  | Plastic Leg (Optional)          | 4              | 4              | 4              |
| 20                      | 2159000   | Primary Wires                   | 1              |                |                |
|                         | 2159001   | Primary Wires                   |                | 1              |                |
|                         | 2159002   | Primary Wires                   |                |                | 1              |
| 21                      | G03185-2  | Infinite Switch-240 Volt        | 1              | 2              | 3              |
| 22                      | 2138504   | Pilot Green                     | 1              | 2              | 3              |
| 24                      | 2138700   | Knob                            | 1              | 2              | 3              |
| 25                      | 2139000   | Dial Insert                     | 1              | 2              | 3              |
| 26                      | 2147700   | Ground Wire                     | 1              | 1              | 1              |
| 27                      | 2159101   | Element Wires                   | 2              | 4              | 6              |
| 28                      | 2149299   | Door Assembly Enamelled 15"     | 1              |                |                |
|                         | 2149296   | Door Assembly Enamelled 30"     |                | 1              |                |
|                         | 2149289   | Door Assembly 42" Enamelled     |                |                | 1              |
| * NOT ILLUSTRATED       |           |                                 |                |                |                |
| RECOMMENDED STOCK PARTS |           |                                 |                |                |                |

# GARLAND PARTS IDENTIFICATION

*BROILER ED/EDU-15B, ED/EDU-30B, ED/EDU-42B*

*ED Series*

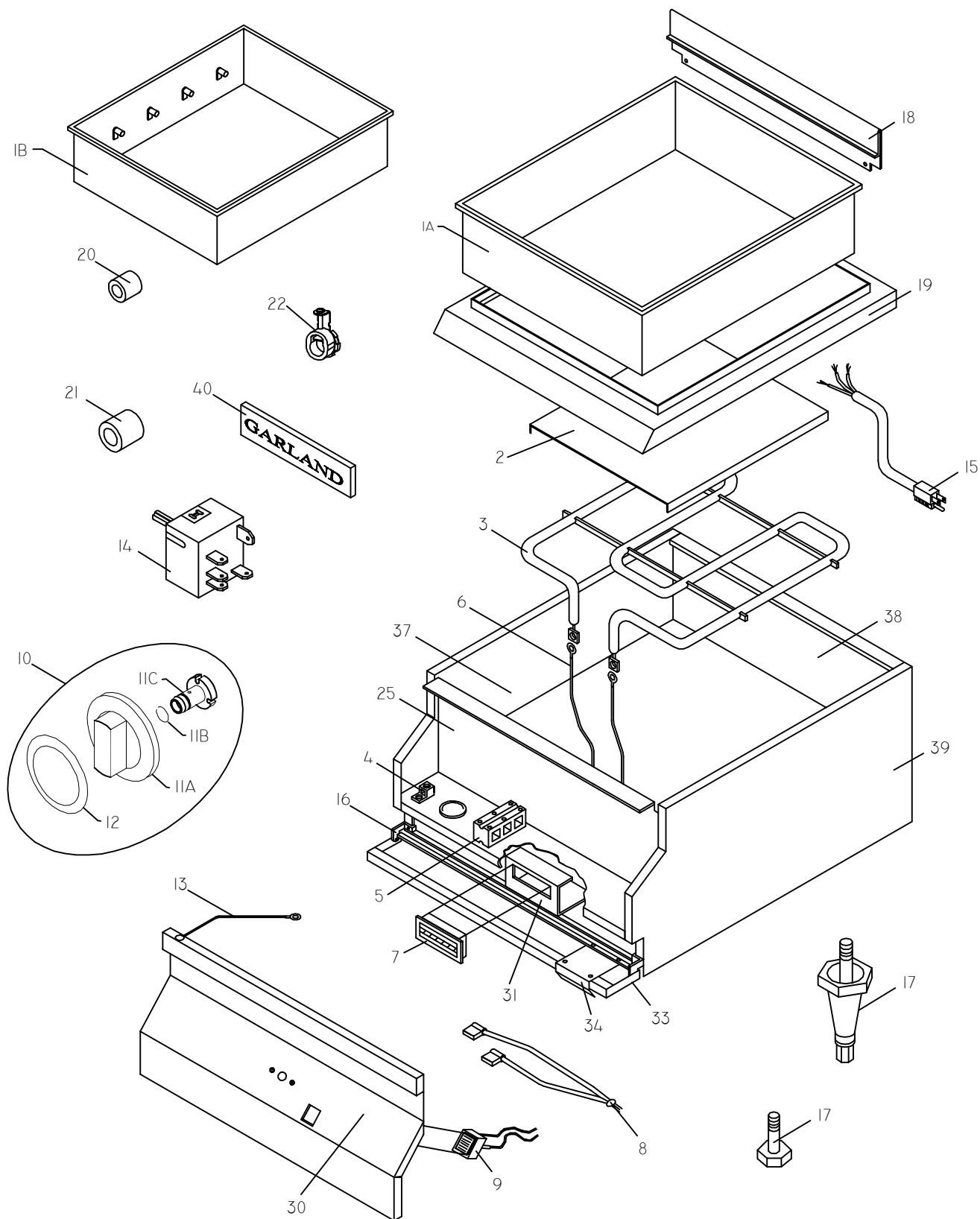
| ITEM                    | PART #   | DESCRIPTION                                 | MODEL          |                |                |
|-------------------------|----------|---|----------------|----------------|----------------|
|                         |          |   | QTY            |                |                |
|                         |          |   | ED/EDU<br>-15B | ED/EDU<br>-30B | ED/EDU<br>-42B |
| 29                      | 2149300  | Door Pull                                   | 1              | 1              | 1              |
| 30                      | 2137900  | Control Panel<br>Up to 5/06/94              | 1              |                |                |
|                         |          |   |                |                |                |
|                         | 2349700  | Control Panel 15"<br>From 5/06/94           | 1              |                |                |
|                         |          |   |                |                |                |
|                         | 2138100  | Control Panel<br>Up to 4/04/94              |                | 1              |                |
|                         |          |   |                |                |                |
|                         | 2349900  | Control Panel 30"<br>From 4/04/94           |                | 1              |                |
|                         |          |   |                |                |                |
|                         | 2138400  | Control Panel<br>Up to 3/28/94              |                |                | 1              |
|                         |          |   |                |                |                |
|                         | 2350200  | Control Panel 42"<br>From 3/28/94           |                |                | 1              |
|                         |          |   |                |                |                |
| 31*                     | 2139700  | Control Panel Clip                          | 2              | 2              | 3              |
| 32                      | G01487-5 | Heyco Bushing 1-5/16 ID                     | 1              | 1              | 1              |
| 33*                     | 2155700  | Grease Tray Slide                           | 2              | 2              | 2              |
| 34                      | 2149600  | Wireway                                     | 1              | 1              | 1              |
| 35                      | 2180699  | Side Assembly LH - Black (Code 9402CG0180)  | 1              | 1              | 1              |
|                         | 2180698  | Side - Left Assembly S/S (Code 9402CG0180)  | 1              | 1              | 1              |
|                         | 2349498  | Body Side Assembly LH (Code 9402CG0181)     | 1              | 1              | 1              |
|                         | 2349496  | Body Side Assembly LH (Code 9402CG0181)     | 1              | 1              | 1              |
| 36                      | 2181000  | Body Back & Bottom                          | 1              |                |                |
|                         | 2181001  | Body Back & Bottom S/S                      | 1              |                |                |
|                         | 2181200  | Body Back & Bottom (30B)                    |                | 1              |                |
|                         | 2181201  | Body Back & Bottom S/S                      |                | 1              |                |
|                         | 2181500  | Body Back & Bottom (42B)                    |                |                | 1              |
|                         | 2181501  | Body Back & Bottom S/S                      |                |                | 1              |
| 37                      | 2180599  | Side Assembly RH (Code 9402CG0180)          | 1              | 1              | 1              |
|                         | 2180598  | Side - Right Assembly S/S (Code 9402CG0180) | 1              | 1              | 1              |
|                         | 2349499  | Body Side Assembly RH (Code 9402CG0181)     | 1              | 1              | 1              |
|                         | 2349497  | Body Side Assembly RH (Code 9402CG0181)     | 1              | 1              | 1              |
| 38*                     | 2174500  | Joiner Tab                                  | 2              | 2              | 2              |
| 39                      | 2135199  | Control Shield Assembly<br>Up to 3/03/94    | 1              |                |                |
|                         |          |   |                |                |                |
|                         | 2352199  | Control Shield Assembly<br>From 3/03/94     | 1              |                |                |
|                         |          |   |                |                |                |
|                         | 2161699  | Control Shield Assembly<br>Up to 4/04/94    |                | 1              |                |
|                         |          |   |                |                |                |
|                         | 2352699  | Control Shield Assembly<br>From 4/04/94     |                | 1              |                |
|                         |          |   |                |                |                |
|                         | 2165299  | Control Shield Assembly<br>Up to 3/03/94    |                |                | 1              |
|                         |          |   |                |                |                |
|                         | 2352799  | Control Shield Assembly<br>From 3/03/94     |                |                | 1              |
|                         |          |   |                |                |                |
| 40*                     | 2135600  | Shield                                      | 1              | 2              | 3              |
| 41                      | 2436000  | Prop Hanger                                 | 1              | 2              | 3              |
| 42                      | 2436100  | Prop  | 1              | 2              | 3              |
| * NOT ILLUSTRATED       |          |   |                |                |                |
| RECOMMENDED STOCK PARTS |          |   |                |                |                |

## GARLAND PARTS IDENTIFICATION

*BROILER ED/EDU-15B, ED/EDU-30B, ED/EDU-42B*

*ED Series*

| ITEM                    | PART #  | DESCRIPTION                     | MODEL          |                |                |
|-------------------------|---------|---------------------------------|----------------|----------------|----------------|
|                         |         |                                 | QTY            |                |                |
|                         |         |                                 | ED/EDU<br>-15B | ED/EDU<br>-30B | ED/EDU<br>-42B |
| 43                      | 2159800 | Grate Stop                      | 1              | 2              | 3              |
| 44                      | 1902919 | Garland Nameplate 4"            | 1              | 1              | 1              |
| 45*                     | 2145100 | Wiring Diagram ED-15B-Domestic  |                |                |                |
|                         | 2145200 | Wiring Diagram ED-15B-Exp       |                |                |                |
|                         | 2145201 | Wiring Diagram -EDU-15B-CE VER. |                |                |                |
| 46*                     | 2155300 | Wiring Diagram ED-30B-Domestic  |                |                |                |
|                         | 2145400 | Wiring Diagram ED-30B-Exp.      |                |                |                |
|                         | 2145401 | Wiring Diagram -EDU-30B-CE VER. |                |                |                |
| 47*                     | 2145500 | Wiring Diagram ED-42B-Domestic  |                |                |                |
|                         | 2145600 | Wiring Diagram ED-42B-Exp.      |                |                |                |
|                         | 2145601 | Wiring Diagram EDU-42B-CE VER.  |                |                |                |
| * NOT ILLUSTRATED       |         |                                 |                |                |                |
| RECOMMENDED STOCK PARTS |         |                                 |                |                |                |



**GARLAND PARTS IDENTIFICATION**  
**FOOD WARMER ED/EDU-15W, ED-15WP**

| ITEM | PART #          | DESCRIPTION                                       | MODEL          |          |
|------|-----------------|---|----------------|----------|
|      |                 |   | QTY            |          |
|      |                 |   | ED/EDU<br>-15W | ED-15WP  |
| 1A   | <b>2186100</b>  | <b>Food Warmer Tank</b>                           | <b>1</b>       | <b>1</b> |
| 1B   | <b>2186199</b>  | <b>Food Well With Pan Stop (Tim Hortons Only)</b> |                | <b>1</b> |
| 2    | 2156400         | Element Plate                                     | 1              | 1        |
| 3    | <b>G0569-1</b>  | <b>Element 120V,1 KW</b>                          |                | <b>1</b> |
|      | <b>G0569-2</b>  | <b>Element 208V,1KW</b>                           | <b>1</b>       |          |
|      | <b>G0569-3</b>  | <b>Element 240V,1 KW</b>                          | <b>1</b>       |          |
|      | <b>G0569-5</b>  | <b>Element 230V, 1.1KW</b>                        | <b>1</b>       |          |
|      |                 | <b>EDU Models Only</b>                            |                |          |
| 4    | G01500-1        | Ground Terminal 55AMP                             | 1              | 1        |
| 5    | 2147300         | Terminal Block 3 Circuit                          | 1              | 1        |
|      | 2147302         | Terminal Block 3 Circuit Export                   | 1              |          |
| 6    | 2148300         | Element Wires                                     | 1              | 1        |
| 7    | <b>078174-1</b> | <b>Magnetic Door Catch</b>                        | <b>1</b>       | <b>1</b> |
| 8    | 2148200         | Primary Wires                                     |                | 1        |
|      | 2148201         | Primary Wires                                     | 1              |          |
| 9    | <b>2138504</b>  | <b>Pilot Green</b>                                | <b>1</b>       | <b>1</b> |
| 10   | <b>4512115</b>  | <b>Knob Kit 2138700,2139000</b>                   | <b>1</b>       | <b>1</b> |
|      |                 | <b>Include Items # 11A, 11B, 11C &amp; 12</b>     |                |          |
| 11A  | <b>2138700</b>  | <b>Knob NLA Use 3043200</b>                       | <b>1</b>       | <b>1</b> |
|      | <b>3043200</b>  | <b>Knob</b>                                       |                |          |
| 11B  | <b>3043300</b>  | <b>Hub Retaining Spring</b>                       |                |          |
| 11C  | <b>3043207</b>  | <b>Hub</b>  |                |          |
| 12   | <b>2139000</b>  | <b>Dial Insert</b>                                |                |          |
| 13   | 2147700         | Ground Wire                                       | 1              | 1        |
| 14   | <b>G03185-1</b> | <b>Infinite Switch-120 VOLT</b>                   |                | <b>1</b> |
|      | <b>G03185-2</b> | <b>Infinite Switch-240 Volt</b>                   | <b>1</b>       |          |
| 15   | G2840-1         | Cord & Plug-Set 3/14 Wire 15A                     |                | 1        |
| 16   | 2149400         | Door Hinge Right Hand                             | 1              | 1        |
|      | 2149401         | Door Hinge Left Hand                              | 1              | 1        |
| 17   | F157            | Bolt-3/8-16X1 1/16"                               | 4              | 4        |
|      | 078109-1        | Plastic Leg (Optional)                            | 4              | 4        |
| 18   | 2168000         | Back Splash to 12/07/95                           | 1              | 1        |
|      | 2385500         | Back Splash from 12/07/95                         | 1              | 1        |
| 19   | 2133700         | Main Top  | 1              | 1        |
| 20   | G01487-8        | Heyco Bushing 11/16 ID                            | 1              | 1        |
| 21   | G01487-5        | Heyco Bushing 1-5/16 ID                           | 1              | 1        |
| 22   | G01497-1        | Bx Connector Straight 3/8".                       | 1              | 1        |
| 23*  | G0577-1-6       | Element Baffle Pan                                | 1              | 1        |
| 24*  | 1472205         | Insulation 17 X 12 X 1                            | 1              | 1        |
| 25   | 2133899         | Control Shield Assembly                           | 1              | 1        |
|      |                 | Up to 8/18/94                                     |                |          |
|      | 2352099         | Control Shield Assembly                           | 1              | 1        |
|      |                 | From 8/18/94                                      |                |          |

\* NOT ILLUSTRATED

**RECOMMENDED STOCK PARTS**

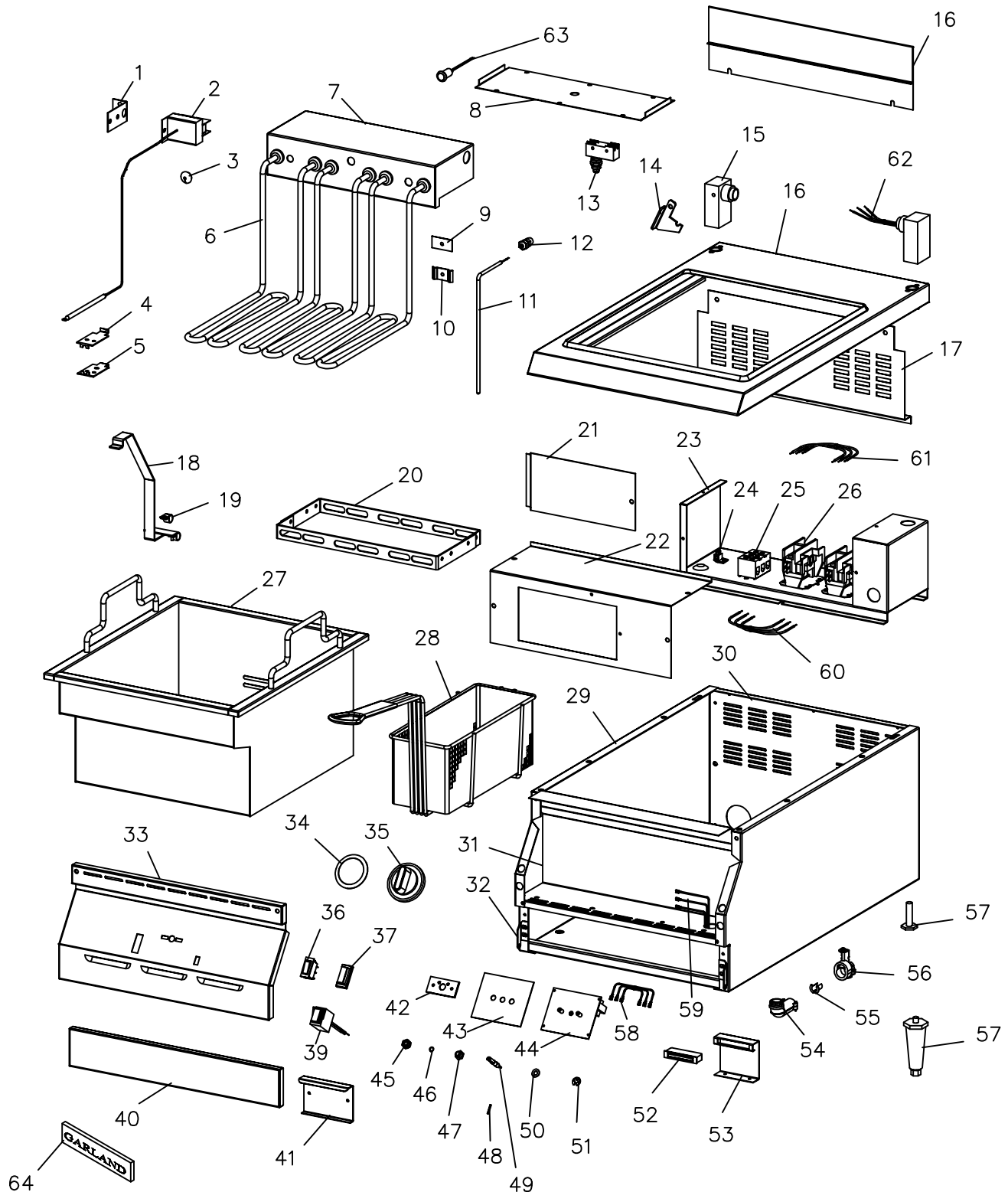
**GARLAND PARTS IDENTIFICATION**  
**FOOD WARMER ED/EDU-15W, ED-15WP**

| ITEM | PART #   | DESCRIPTION                                 | MODEL          |         |
|------|----------|---|----------------|---------|
|      |          |   | QTY            |         |
|      |          |   | ED/EDU<br>-15W | ED-15WP |
| 26*  | 079113-1 | Fibrefrac 970J 1/8"                         | 1              | 1       |
| 27*  | 2133999  | Element Tray Assembly                       | 1              | 1       |
| 28*  | 2134000  | Side Liner                                  | 2              | 2       |
| 29*  | 2134500  | Front Liner                                 | 1              | 1       |
| 30   | 2137900  | Control Panel                               | 1              | 1       |
|      |          | Up to 5/06/94                               |                |         |
|      | 2349700  | Control Panel 15"                           | 1              | 1       |
|      |          | From 5/06/94                                |                |         |
| 31   | 2139600  | Magnet Mounting Bracket                     | 1              | 1       |
|      |          | Up to 5/07/91                               |                |         |
|      | 2183500  | Magnet Bracket                              | 1              | 1       |
|      |          | From 5/07/91                                |                |         |
| 32*  | 2139700  | Control Panel Clip                          | 2              | 2       |
| 33   | 2149299  | Door Assembly Enamelled 15"                 | 1              | 1       |
| 34   | 2149300  | Door Pull                                   | 1              | 1       |
| 35*  | 2149600  | Wireway                                     | 1              | 1       |
| 36*  | 2174500  | Joiner Tab                                  | 2              | 2       |
| 37   | 2180699  | Side Assembly LH - Black (Code 9402CG0180)  | 1              | 1       |
|      | 2180698  | Side - Left Assembly S/S (Code 9402CG0180)  | 1              | 1       |
|      | 2349498  | Body Side Assembly LH (Code 9402CG0181)     | 1              | 1       |
|      | 2349496  | Body Side Assembly LH (Code 9402CG0181)     | 1              | 1       |
| 38   | 2181000  | Body Back & Bottom                          | 1              | 1       |
|      | 2181001  | Body Back & Bottom S/S                      | 1              | 1       |
| 39   | 2180599  | Side Assembly RH (Code 9402CG0180)          | 1              | 1       |
|      | 2180598  | Side - Right Assembly S/S (Code 9402CG0180) | 1              | 1       |
|      | 2349499  | Body Side Assembly RH (Code 9402CG0181)     | 1              | 1       |
|      | 2349497  | Body Side Assembly RH (Code 9402CG0181)     | 1              | 1       |
| 40   | 1902919  | Garland Nameplate 4"                        | 1              | 1       |
| 41*  | 2146500  | Wiring Diagram Domestic ED-15W              |                |         |
| 42*  | 2146600  | Wiring Diagram Export ED-15W                |                |         |
| 43*  | 2146601  | Wiring Diagram EDU-15W CE VER.              |                |         |
| 44*  | 2146700  | Wiring Diagram ED-15WP                      |                |         |

\* NOT ILLUSTRATED

**RECOMMENDED STOCK PARTS**

## NOTES





**GARLAND PARTS IDENTIFICATION**  
**ELECTRIC SUPER FRYER ED-15SF, ED-30SFT, EDU-18-36SF**

| ITEM | PART #         | DESCRIPTION   | MODEL       |              |              |              |
|------|----------------|---|-------------|--------------|--------------|--------------|
|      |                |   | QTY         |              |              |              |
|      |                |   | ED-15<br>SF | ED-30<br>SFT | EDU-<br>18SF | EDU-<br>36SF |
| 1    | 2158300        | Hi-Limit Mounting Bracket                               | 1           | 2            | 1            | 2            |
| 2    | 2147600        | Hi Limit 430 Degrees F                                  | 1           | 2            | 1            | 2            |
| 3    | G1155-1        | Black PVC Grommet #315-463                              | 1           | 2            | 1            | 2            |
| 4    | 2160700        | Bulb Clamp Top  | 1           | 2            | 1            | 2            |
| 5    | 2160899        | Bulb Clamp Bottom Assembly                              | 1           | 2            | 1            | 2            |
| 6    | <b>2147500</b> | <b>Super Fryer Element 208 VOLT</b>                     | 3           | 6            |              |              |
|      | <b>2147501</b> | <b>Super Fryer Element 220 VOLT</b>                     | 3           | 6            |              |              |
|      | <b>2147502</b> | <b>Super Fryer Element 240 VOLT</b>                     | 3           | 6            | 3            | 6            |
|      | <b>2147503</b> | <b>Super Fryer Element 230 VOLTS<br/>EDU Model Only</b> |             |              | 3            | 6            |
| 7    | 2158499        | Termination Box Assembly                                | 1           | 2            | 1            | 2            |
| 8    | 2158500        | Termination Box Cover                                   | 1           | 2            |              |              |
|      | 2158501        | Termination Box Cover Ce.                               |             |              | 1            | 2            |
| 9    | 2160499        | Clamp Back Assembly                                     | 1           | 2            | 1            | 2            |
| 10   | 2160300        | Rtd Clamp   | 1           | 2            | 1            | 2            |
| 11   | <b>2147000</b> | <b>Rtd Sensor-Fryer</b>                                 | 1           | 2            | 1            | 2            |
| 12   | 2147400        | Liquid-Tite Fitting #3444                               | 1           | 2            | 1            | 2            |
| 13   | <b>2398600</b> | <b>Switch W/Sealing Cap X01-E1G6</b>                    |             |              | 1            | 2            |
| 14   | 2385400        | Termination Box Support                                 | 1           | 2            | 1            | 2            |
| 15   | 2157399        | End Post Assembly                                       | 2           | 4            | 2            | 4            |
| 16   | 2384999        | Main Top Assy   | 1           |              |              |              |
|      | 2385199        | Main Top Assy   |             | 1            |              |              |
|      | 2384998        | Main Top Assembly                                       |             |              | 1            |              |
|      | 2385198        | Main Top Assembly                                       |             |              |              | 1            |
| 17   | 2157800        | Rear Shield   | 1           |              |              |              |
|      | 2157801        | Rear Shield   |             | 1            |              |              |
|      | 2157802        | Rear Sheild   |             |              | 1            |              |
|      | 2157803        | Rear Sheild   |             |              |              | 1            |
| 18   | 2160598        | Element Lifting Handle                                  | 1           | 2            | 1            | 2            |
| 19   | F141           | Clamp-Tube Tinnerman Use GF141                          | 2           | 4            | 2            | 4            |
| 20   | 2158699        | Element Clamp Assembly                                  | 1           | 2            | 1            | 2            |
| 21   | 2176000        | Inspection Cover  | 1           | 1            | 1            | 1            |
| 22   | 2157900        | Contactactor Box Cover                                  | 1           |              |              |              |
|      | 2157700        | Contactactor Box Cover                                  |             | 1            |              |              |
|      | 2157901        | Contactactor Box Cover                                  |             |              | 1            |              |
|      | 2157701        | Contactactor Box Cover                                  |             |              |              | 1            |
| 23   | <b>2158100</b> | <b>Contactactor Box</b>                                 | 1           |              |              |              |
|      | <b>2158000</b> | <b>Contactactor Box</b>                                 |             | 1            |              |              |
|      | <b>2158101</b> | <b>Contactactor Box</b>                                 |             |              | 1            |              |
|      | <b>2158001</b> | <b>Contactactor Box</b>                                 |             |              |              | 1            |
| 24   | G01500-1       | Ground Terminal 55AMP                                   | 1           |              | 1            |              |
|      | G01499-1       | Ground Terminal 105A Large SLU-70                       |             | 1            |              | 1            |
| 25   | 2147300        | Terminal Block 3 Circuit                                | 1           |              | 1            |              |
|      | G01268-1       | Terminal Block #824 Export N.L.A.                       |             | 3            |              |              |
|      | G01268-1       | Terminal Block #824 Export N.L.A.                       |             | 4            |              |              |

\* NOT ILLUSTRATED

**RECOMMENDED STOCK PARTS**

**GARLAND PARTS IDENTIFICATION**  
**ELECTRIC SUPER FRYER ED-15SF, ED-30SFT, EDU-18-36SF**

| ITEM       | PART #          | DESCRIPTION                                  | MODEL       |              |              |              |
|------------|-----------------|--|-------------|--------------|--------------|--------------|
|            |                 |  | QTY         |              |              |              |
|            |                 |  | ED-15<br>SF | ED-30<br>SFT | EDU-<br>18SF | EDU-<br>36SF |
| 25<br>Cont | G01268-2        | Terminal Block End #830 N.L.A.               |             | 1            |              |              |
|            | G01280-3-7      | Terminal Block Channel 3 LUG Domestic N.L.A. |             | 1            |              |              |
|            | G01280-4-7      | Terminal Block Channel 4 LUG Export N.L.A.   |             | 1            |              |              |
|            | 2694800         | Export Terminal Block (5)                    |             |              |              | 1            |
| 26         | <b>2186900</b>  | <b>Contactor Single Pole</b>                 | 2           | 4            | 2            | 4            |
| 27         | <b>2133599</b>  | <b>Fry-Tank Assembly</b>                     | 1           | 2            | 1            | 2            |
| 28         | <b>G02700-3</b> | <b>Fryer Basket Twin R.H.</b>                | 1           | 2            | 1            | 2            |
|            | <b>G02700-4</b> | <b>Fryer Basket Twin L.H.</b>                | 1           | 2            | 1            | 2            |
|            | G02701-2        | Fryer Basket Single                          | OPTIONAL    |              |              |              |
| 29         | 2180699         | Side Assembly LH - Black (Code 9402CG0180)   | 1           | 1            | 1            | 1            |
|            | 2180698         | Side - Left Assembly S/S (Code 9402CG0180)   | 1           | 1            | 1            | 1            |
|            | 2180599         | Side Assembly RH (Code 9402CG0180)           | 1           | 1            | 1            | 1            |
|            | 2180598         | Side - Right Assembly S/S (Code 9402CG0180)  | 1           | 1            | 1            | 1            |
|            | 2349499         | Body Side Assembly RH (Code 9402CG0181)      | 1           | 1            | 1            | 1            |
|            | 2349498         | Body Side Assembly LH (Code 9402CG0181)      | 1           | 1            | 1            | 1            |
|            | 2349497         | Body Side Assembly RH (Code 9402CG0181)      | 1           | 1            | 1            | 1            |
|            | 2349496         | Body Side Assembly LH (Code 9402CG0181)      | 1           | 1            | 1            | 1            |
| 30         | 2180899         | Body Back & Bottom Assy (15F)                | 1           |              |              |              |
|            | 2180898         | Body Back & Bottom S/S                       | 1           |              |              |              |
|            | 2181399         | Body Back & Bottom Assy (30FT)               |             | 1            |              |              |
|            | 2181398         | Body Back & Bottom S/S                       |             | 1            |              |              |
|            | 2180897         | Body Back & Bottom Assy. 18" W.C.            |             |              | 1            |              |
|            | 2180896         | Body Back & Bottom Assy S/S                  |             |              | 1            |              |
|            | 2181397         | Back and Bottom Assembly W.C.                |             |              |              | 1            |
|            | 2181396         | Back & Bottom Assembly S/S                   |             |              |              | 1            |
| 31         | 2351900         | Control Shield                               | 1           |              |              |              |
|            | 2352500         | Control Shield                               |             | 1            |              |              |
|            | 2351902         | Control Sheild                               |             |              | 1            |              |
|            | 2352502         | Control Sheild                               |             |              |              | 1            |
| 32         | 2149400         | Door Hinge Right Hand                        | 1           | 1            | 1            | 1            |
|            | 2149401         | Door Hinge Left Hand                         | 1           | 1            | 1            | 1            |
| 33         | 2349500         | Control Panel                                | 1           |              |              |              |
|            | 2350000         | Control Panel                                |             | 1            |              |              |
|            | 2349501         | Control Panel                                |             |              | 1            |              |
|            | 2350001         | Control Panel                                |             |              |              | 1            |
| 34         | <b>2138900</b>  | <b>Dial Insert F/ED-15F,30F (F) 200-375</b>  | 1           | 2            | 1            | 2            |
|            | <b>2138901</b>  | <b>Dial Insert F/ED-15FE,30FE (C) 95-192</b> | 1           | 2            | 1            | 2            |
| 35         | <b>2138700</b>  | <b>Knob NLA Use 3043200</b>                  | 1           | 2            | 1            | 2            |
| 36         | 2146800         | Illuminated Power Switch                     | 1           | 2            | 1            | 2            |
| 37         | 3011401         | PVC Cap                                      | 1           | 2            | 1            | 2            |
| 39         | <b>2138500</b>  | <b>Pilot Amber</b>                           | 1           | 2            | 1            | 2            |
| 40         | 2149299         | Door Assembly Enamelled 15"                  | 1           |              |              |              |
|            | 2149296         | Door Assembly Enamelled 30"                  |             | 1            |              |              |
|            | 2149298         | Door Ass'y (Enamelled) 18"                   |             |              | 1            |              |

\* NOT ILLUSTRATED

**RECOMMENDED STOCK PARTS**

**GARLAND PARTS IDENTIFICATION**  
**ELECTRIC SUPER FRYER ED-15SF, ED-30SFT, EDU-18-36SF**

| ITEM | PART #          | DESCRIPTION                             | MODEL       |              |              |              |
|------|-----------------|---|-------------|--------------|--------------|--------------|
|      |                 |   | QTY         |              |              |              |
|      |                 |   | ED-15<br>SF | ED-30<br>SFT | EDU-<br>18SF | EDU-<br>36SF |
|      | 2149295         | Door Assembly Enamelled 36"             |             |              |              | 1            |
| 41   | 2149300         | Door Pull                               | 1           | 1            | 1            | 1            |
| 42   | 2491500         | Stop Plate Assembly                     | 1           | 2            | 1            | 2            |
| 43   | 2159300         | Insulator-Thermostat                    | 1           | 2            | 1            | 2            |
| 44   | <b>2142000</b>  | <b>Electronic Thermostat 200-375 F</b>  | 1           | 2            | 1            | 2            |
| 45   | 2358200         | Shaft Seal N9030 X 1/4                  | 1           | 2            | 1            | 2            |
| 46   | 2382800         | Shaft Retaining Spring                  | 1           | 2            | 1            | 2            |
| 47   | 2167300         | Panel Bearing Assembly                  | 1           | 2            | 1            | 2            |
| 48   | 2167000         | Spring Tension Pin                      | 1           | 2            | 1            | 2            |
| 49   | 2166800         | Potentiometer Shaft                     | 1           | 2            | 1            | 2            |
| 50   | 2167100         | Bowed Spring Washer                     | 1           | 2            | 1            | 2            |
| 51   | 2167200         | Retaining Ring                          | 1           | 2            | 1            | 2            |
| 52   | <b>078174-1</b> | <b>Magnetic Door Catch</b>              | 1           | 1            | 1            | 1            |
| 53   | 2139600         | Magnet Mounting Bracket<br>to 5/07/91   | 1           | 1            | 1            | 1            |
|      | 2183500         | Magnet Bracket<br>from 5/07/91          | 1           | 1            | 1            | 1            |
| 54   | 1028500         | Connector 3/8" 90 DEG. Romex            | 1           | 2            | 1            | 2            |
| 55   | 1029600         | Antishorts #1                           | 2           | 4            | 2            | 4            |
| 56   | G01497-1        | Bx Connector Straight 3/8".             | 1           | 2            | 1            | 2            |
| 57   | F157            | Bolt-3/8-16X1 1/16"                     | 4           | 4            | 4            | 4            |
|      | 078109-1        | Plastic Leg (Optional)                  | 4           | 4            | 4            | 4            |
| 58   | 2169200         | Panel Control Wire F/ED15F,30F          | 1           | 2            | 1            | 2            |
| 59   | 2169100         | Contacto Control Wire F/ED-15F          | 1           |              |              |              |
|      | 2170500         | Contacto Control Wire F/ED-30F          |             | 1            |              |              |
|      | 2169101         | Control Wires - Contactor               |             |              | 1            |              |
|      | 2170501         | Control Wires - Contactor               |             |              |              | 1            |
| 60   | 2168800         | Contacto Jumper F/ED-15F,30F Export     | 1           | 2            | 1            |              |
|      | 2168801         | Contacto Jumper                         |             |              |              | 2            |
|      | 2170000         | Contacto Jumper F/ED-30F Domestic       |             | 1            |              |              |
| 61   | 2168700         | Contacto Wire F/ED-15F Domestic         | 1           |              |              |              |
|      | 2168701         | Contacto Wire F/ED-15F Export           | 1           |              | 1            |              |
|      | 2169900         | Contacto Wire F/ED-30F Domestic         |             | 1            |              |              |
|      | 2169901         | Contacto Wires F/ED-30F Export          |             | 1            |              | 1            |
| 62   | 2168900         | Left End Post Wire F/ED-15F Dom.        | 1           |              |              |              |
|      | 2168901         | Left End Post Wire F/ED-15F Export      | 1           |              |              |              |
|      | 2168902         | Left End Post Wires Harness             |             |              | 1            |              |
|      | 2169000         | Right End Post Wire F/ED-15F Domestic   | 1           |              |              |              |
|      | 2169001         | Right End Post Wire F/ED-15F Export     | 1           |              | 1            |              |
|      | 2170100         | LF Left End Post Wire F/ED-30F Domestic |             | 1            |              |              |
|      | 2170101         | LF Left End Post Wire EXPED30F Export   |             | 1            |              |              |
|      | 2170102         | L.F. Left End Post Wires Harness        |             |              |              | 1            |
|      | 2170200         | LF Right End Post Wire F/ED30F Domestic |             | 1            |              |              |
|      | 2170201         | LF Right End Post Wire F/ED30F Export   |             | 1            |              | 1            |
|      | 2170300         | RF Left End Post Wire F/ED-30F Domestic |             | 1            |              |              |
|      | 2170301         | RF Left End Post Wire F/ED-30F Export   |             | 1            |              |              |
|      | 2170302         | R.F. Left End Post Wires Harness        |             |              |              | 1            |
|      | 2170400         | RF Right End Post Wire F/ED30F Domestic |             | 1            |              |              |
|      | 2170401         | Right End Post Wire F/ED30F Export      |             | 1            |              | 1            |

\* NOT ILLUSTRATED

**RECOMMENDED STOCK PARTS**

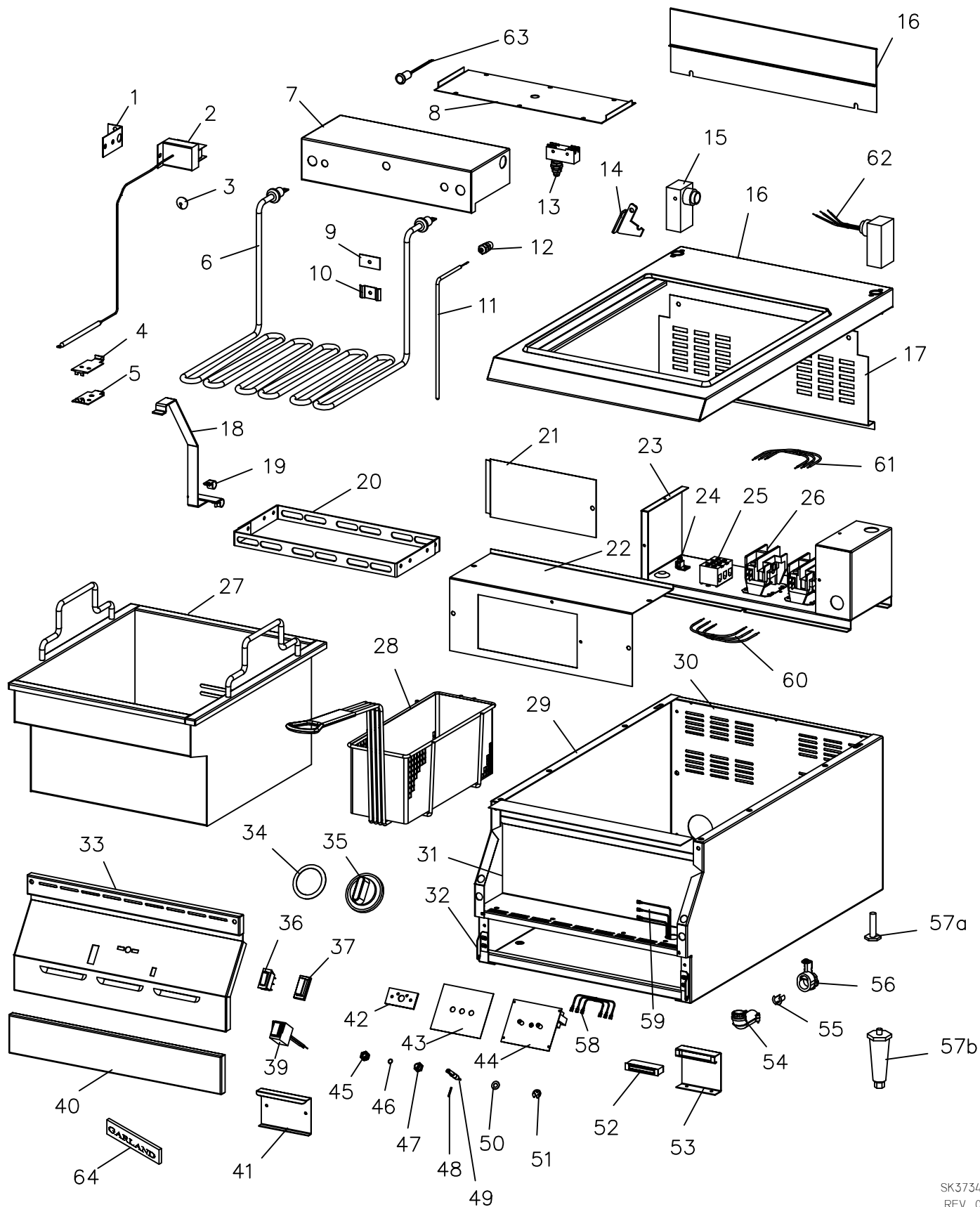
**GARLAND PARTS IDENTIFICATION**  
**ELECTRIC SUPER FRYER ED-15SF, ED-30SFT, EDU-18-36SF**

| ITEM | PART #          | DESCRIPTION           | MODEL       |              |              |              |
|------|-----------------|-----------------------|-------------|--------------|--------------|--------------|
|      |                 |                       | QTY         |              |              |              |
|      |                 |                       | ED-15<br>SF | ED-30<br>SFT | EDU-<br>18SF | EDU-<br>36SF |
| 63   | <b>G01296-1</b> | <b>Pilot Red 240V</b> |             |              | 1            | 2            |
| 64   | 1902919         | Garland Nameplate 4"  | 1           | 1            | 1            | 1            |
| 65*  | 2145700         | Wiring Diagram        | ED-15SF-DOM |              |              |              |
|      | 2145800         | Wiring Diagram        | ED-15SF-EXP |              |              |              |
| 66*  | 2145900         | Wiring Diagram        | ED-30SF-DOM |              |              |              |
|      | 2144600         | Wiring Diagram        | ED-30SF-EXP |              |              |              |
| 67*  | 2145801         | Wiring Diagram        | EDU-18SF    |              |              |              |
| 68*  | 2146001         | Wiring Diagram        | EDU-36SF    |              |              |              |

\* NOT ILLUSTRATED

**RECOMMENDED STOCK PARTS**

## NOTES



**GARLAND PARTS IDENTIFICATION**  
**ELECTRIC FRYER ED-15F,ED-30FT, EDU-18-36FT**

| ITEM | PART #         | DESCRIPTION  | MODEL  |         |         |          |
|------|----------------|--|--------|---------|---------|----------|
|      |                |  | QTY    |         |         |          |
|      |                |  | ED-15F | ED-30FT | EDU-18F | EDU-36FT |
| 1    | 2158300        | Hi-Limit Mounting Bracket                            | 1      | 2       | 1       | 2        |
| 2    | 2147600        | Hi Limit 430 Degrees F                               | 1      | 2       | 1       | 2        |
| 3    | G1155-1        | Black PVC Grommet #315-463                           | 1      | 2       | 1       | 2        |
| 4    | 2160700        | Bulb Clamp Top                                       | 1      | 2       | 1       | 2        |
| 5    | 2160899        | Bulb Clamp Bottom Assembly                           | 1      | 2       | 1       | 2        |
| 6    | <b>2185500</b> | <b>Fryer Element 208V 5.3KW</b>                      | 1      | 2       | 1       | 2        |
|      | <b>2185501</b> | <b>Fryer Element 220V 5.929KW</b>                    | 1      | 2       | 1       | 2        |
|      | <b>2185502</b> | <b>Fryer Element 240V 5.3KW</b>                      | 1      | 2       | 1       | 2        |
|      | <b>2185503</b> | <b>Fryer Element, 230V, 5.3KW<br/>EDU Model Only</b> |        |         | 1       | 2        |
| 7    | 2158499        | Termination Box Assembly                             | 1      | 2       | 1       | 2        |
| 8    | 2158500        | Termination Box Cover                                | 1      | 2       |         |          |
|      | 2158501        | Termination Box Cover Ce.                            |        |         | 1       | 2        |
| 9    | 2160499        | Clamp Back Assembly                                  | 1      | 2       | 1       | 2        |
| 10   | 2160300        | Rtd Clamp  | 1      | 2       | 1       | 2        |
| 11   | <b>2147000</b> | <b>Rtd Sensor-Fryer</b>                              | 1      | 2       | 1       | 2        |
| 12   | 2147400        | Liquid-Tite Fitting #3444                            | 1      | 2       | 1       | 2        |
| 13   | <b>2398600</b> | <b>Switch W/Sealing Cap X01-E1G6</b>                 |        |         | 1       | 2        |
| 14   | 2385400        | Termination Box Support                              | 1      | 2       | 1       | 2        |
| 15   | 2157399        | End Post Assembly                                    | 2      | 4       | 2       | 4        |
| 16   | 2384999        | Main Top Assy  | 1      |         |         |          |
|      | 2385199        | Main Top Assy  |        | 1       |         |          |
|      | 2384998        | Main Top Assembly                                    |        |         | 1       |          |
|      | 2385198        | Main Top Assembly                                    |        |         |         | 1        |
| 17   | 2157800        | Rear Shield  | 1      |         |         |          |
|      | 2157801        | Rear Shield  |        | 1       |         |          |
|      | 2157802        | Rear Sheild  |        |         | 1       |          |
|      | 2157803        | Rear Sheild  |        |         |         | 1        |
| 18   | 2160598        | Element Lifting Handle                               | 1      | 2       | 1       | 2        |
| 19   | F141           | Clamp-Tube Tinnerman Use GF141                       | 2      | 4       | 2       | 4        |
| 20   | 2158699        | Element Clamp Assembly                               | 1      | 2       | 1       | 2        |
| 21   | 2176000        | Inspection Cover                                     | 1      | 1       | 1       | 1        |
| 22   | 2157900        | Contacto Box Cover                                   | 1      |         |         |          |
|      | 2157700        | Contacto Box Cover                                   |        | 1       |         |          |
|      | 2157901        | Contacto Box Cover                                   |        |         | 1       |          |
|      | 2157701        | Contacto Box Cover                                   |        |         |         | 1        |
| 23   | <b>2158100</b> | <b>Contacto Box</b>                                  | 1      |         |         |          |
|      | <b>2158000</b> | <b>Contacto Box</b>                                  |        | 1       |         |          |
|      | <b>2158101</b> | <b>Contacto Box</b>                                  |        |         | 1       |          |
|      | <b>2158001</b> | <b>Contacto Box</b>                                  |        |         |         | 1        |
| 24   | G01500-1       | Ground Terminal 55AMP                                | 1      |         | 1       |          |
|      | G01499-1       | Ground Terminal 105A Large SLU-70                    |        | 1       |         | 1        |

\* NOT ULLUSTRATED

**RECOMMENDED STOCK PARTS**

**GARLAND PARTS IDENTIFICATION**  
**ELECTRIC FRYER ED-15F,ED-30FT, EDU-18-36FT**

| ITEM | PART #          | DESCRIPTION                                  | MODEL    |         |         |          |
|------|-----------------|--|----------|---------|---------|----------|
|      |                 |  | QTY      |         |         |          |
|      |                 |  | ED-15F   | ED-30FT | EDU-18F | EDU-36FT |
| 25   | 2147300         | Terminal Block 3 Circuit                     | 1        |         | 1       |          |
|      | G01268-1        | Terminal Block #824 Export N.L.A.            |          | 3       |         |          |
|      | G01268-1        | Terminal Block #824 Export N.L.A.            |          | 4       |         |          |
|      | G01268-2        | Terminal Block End #830 N.L.A.               |          | 1       |         |          |
|      | G01280-3-7      | Terminal Block Channel 3 LUG Domestic N.L.A. |          | 1       |         |          |
|      | G01280-4-7      | Terminal Block Channel 4 LUG Export N.L.A.   |          | 1       |         |          |
|      | 2694800         | Export Terminal Block (5)                    |          |         |         | 1        |
| 26   | <b>2186900</b>  | <b>Contactor Single Pole</b>                 | 2        | 4       | 2       | 4        |
| 27   | <b>2133599</b>  | <b>Fry-Tank Assembly</b>                     | 1        | 2       | 1       | 2        |
| 28   | <b>G02700-3</b> | <b>Fryer Basket Twin R.H.</b>                | 1        | 2       | 1       | 2        |
|      | <b>G02700-4</b> | <b>Fryer Basket Twin L.H.</b>                | 1        | 2       | 1       | 2        |
|      | G02701-2        | Fryer Basket Single                          | OPTIONAL |         |         |          |
| 29   | 2180699         | Side Assembly LH - Black (Code 9402CG0180)   | 1        | 1       | 1       | 1        |
|      | 2180698         | Side - Left Assembly S/S (Code 9402CG0180)   | 1        | 1       | 1       | 1        |
|      | 2180599         | Side Assembly RH (Code 9402CG0180)           | 1        | 1       | 1       | 1        |
|      | 2180598         | Side - Right Assembly S/S (Code 9402CG0180)  | 1        | 1       | 1       | 1        |
|      | 2349499         | Body Side Assembly RH (Code 9402CG0181)      | 1        | 1       | 1       | 1        |
|      | 2349498         | Body Side Assembly LH (Code 9402CG0181)      | 1        | 1       | 1       | 1        |
|      | 2349497         | Body Side Assembly RH (Code 9402CG0181)      | 1        | 1       | 1       | 1        |
| 30   | 2349496         | Body Side Assembly LH (Code 9402CG0181)      | 1        | 1       | 1       | 1        |
|      | 2180899         | Body Back & Bottom Assy (15F)                | 1        |         |         |          |
|      | 2180898         | Body Back & Bottom S/S                       | 1        |         |         |          |
|      | 2181399         | Body Back & Bottom Assy (30FT)               |          | 1       |         |          |
|      | 2181398         | Body Back & Bottom S/S                       |          | 1       |         |          |
|      | 2180897         | Body Back & Bottom Assy. 18" W.C.            |          |         | 1       |          |
|      | 2180896         | Body Back & Bottom Assy S/S                  |          |         | 1       |          |
| 31   | 2181397         | Back and Bottom Assembly W.C.                |          |         |         | 1        |
|      | 2181396         | Back & Bottom Assembly S/S                   |          |         |         | 1        |
|      | 2351900         | Control Shield                               | 1        |         |         |          |
|      | 2352500         | Control Shield                               |          | 1       |         |          |
| 32   | 2351902         | Control Sheild                               |          |         | 1       |          |
|      | 2352502         | Control Sheild                               |          |         |         | 1        |
|      | 2149400         | Door Hinge Right Hand                        | 1        | 1       | 1       | 1        |
| 33   | 2149401         | Door Hinge Left Hand                         | 1        | 1       | 1       | 1        |
|      | 2349500         | Control Panel                                | 1        |         |         |          |
|      | 2350000         | Control Panel                                |          | 1       |         |          |
|      | 2349501         | Control Panel                                |          |         | 1       |          |
| 34   | 2350001         | Control Panel                                |          |         |         | 1        |
|      | <b>2138900</b>  | <b>Dial Insert F/ED-15F,30F (F) 200-375</b>  | 1        | 2       | 1       | 2        |
|      | <b>2138901</b>  | <b>Dial Insert F/ED-15FE,30FE (C) 95-192</b> | 1        | 2       | 1       | 2        |
| 35   | <b>2138700</b>  | <b>Knob NLA Use 3043200</b>                  | 1        | 2       | 1       | 2        |
| 36   | 2146800         | Illuminated Power Switch                     | 1        | 2       | 1       | 2        |
| 37   | 3011401         | PVC Cap                                      | 1        | 2       | 1       | 2        |
| 39   | 2138500         | Pilot Amber                                  | 1        | 2       | 1       | 2        |

\* NOT ULLUSTRATED  
**RECOMMENDED STOCK PARTS**



**GARLAND PARTS IDENTIFICATION**  
**ELECTRIC FRYER ED-15F,ED-30FT, EDU-18-36FT**

| ITEM | PART #          | DESCRIPTION                            | MODEL  |         |         |          |
|------|-----------------|--|--------|---------|---------|----------|
|      |                 |  | QTY    |         |         |          |
|      |                 |  | ED-15F | ED-30FT | EDU-18F | EDU-36FT |
| 40   | 2149299         | Door Assembly Enamelled 15"            | 1      |         |         |          |
|      | 2149296         | Door Assembly Enamelled 30"            |        | 1       |         |          |
|      | 2149298         | Door Ass'y (Enamelled) 18"             |        |         | 1       |          |
|      | 2149295         | Door Assembly Enamelled 36"            |        |         |         | 1        |
| 41   | 2149300         | Door Pull                              | 1      | 1       | 1       | 1        |
| 42   | 2491500         | Stop Plate Assembly                    | 1      | 2       | 1       | 2        |
| 43   | 2159300         | Insulator-Thermostat                   | 1      | 2       | 1       | 2        |
| 44   | <b>2142000</b>  | <b>Electronic Thermostat 200-375 F</b> | 1      | 2       | 1       | 2        |
| 45   | 2358200         | Shaft Seal N9030 X 1/4                 | 1      | 2       | 1       | 2        |
| 46   | 2382800         | Shaft Retaining Spring                 | 1      | 2       | 1       | 2        |
| 47   | 2167300         | Panel Bearing Assembly                 | 1      | 2       | 1       | 2        |
| 48   | 2167000         | Spring Tension Pin                     | 1      | 2       | 1       | 2        |
| 49   | 2166800         | Potentiometer Shaft                    | 1      | 2       | 1       | 2        |
| 50   | 2167100         | Bowed Spring Washer                    | 1      | 2       | 1       | 2        |
| 51   | 2167200         | Retaining Ring                         | 1      | 2       | 1       | 2        |
| 52   | <b>078174-1</b> | <b>Magnetic Door Catch</b>             | 1      | 1       | 1       | 1        |
| 53   | 2139600         | Magnet Mounting Bracket<br>to 5/07/91  | 1      | 1       | 1       | 1        |
|      | 2183500         | Magnet Bracket<br>from 5/07/91         | 1      | 1       | 1       | 1        |
| 54   | 1028500         | Connector 3/8" 90 DEG. Romex           | 1      | 2       | 1       | 2        |
| 55   | 1029600         | Antishorts #1                          | 2      | 4       | 2       | 4        |
| 56   | G01497-1        | Bx Connector Straight 3/8".            | 1      | 2       | 1       | 2        |
| 57a  | F157            | Bolt-3/8-16X1 1/16"                    | 4      | 4       | 4       | 4        |
| 57b  | 078109-1        | Plastic Leg (Optional)                 | 4      | 4       | 4       | 4        |
| 58   | 2169200         | Panel Control Wire F/ED15F,30F         | 1      | 2       | 1       | 2        |
| 59   | 2169100         | Contacto Control Wire F/ED-15F         | 1      |         |         |          |
|      | 2170500         | Contacto Control Wire F/ED-30F         |        | 1       |         |          |
|      | 2169101         | Control Wires - Contactor              |        |         | 1       |          |
|      | 2170501         | Control Wires - Contactor              |        |         |         | 1        |
| 60   | 2168800         | Contacto Jumper F/ED-15F,30F Export    | 1      | 2       |         |          |
|      | 2168801         | Contacto Jumper                        |        |         | 1       | 2        |
| 61   | 2184801         | Contacto Wires                         | 1      |         |         |          |
|      | 2184803         | Contacto Wires                         | 1      |         | 1       |          |
|      | 2184800         | Contacto Wires                         |        | 1       |         |          |
|      | 2184802         | Contacto Wires                         |        | 1       |         | 1        |
| 62   | 2184900         | Left End Post Wires                    | 1      |         |         |          |
|      | 2184901         | Left End Post Wire Harness             |        |         | 1       |          |
|      | 2185000         | Right End Post Wires                   | 1      |         |         |          |
|      | 2185001         | Right End Post Wires                   | 1      |         | 1       |          |
|      | 2185100         | L.F. Left End Post Wires               |        | 1       |         |          |
|      | 2185101         | L.F. Left End Post Wires Harness       |        |         |         | 1        |
|      | 2185200         | L.F.Right End Post Wires               |        | 1       |         |          |
|      | 2185201         | L.F.Right End Post Wires               |        | 1       |         | 1        |
|      | 2185300         | R.F. Left End Post Wires               |        | 1       |         |          |
|      | 2185301         | R.F. Left End Post Wires Harness       |        |         |         | 1        |

\* NOT ULLUSTRATED

**RECOMMENDED STOCK PARTS**

**GARLAND PARTS IDENTIFICATION**  
**ELECTRIC FRYER ED-15F,ED-30FT, EDU-18-36FT**

| ITEM | PART #          | DESCRIPTION              | MODEL        |         |         |          |
|------|-----------------|--------------------------|--------------|---------|---------|----------|
|      |                 |                          | QTY          |         |         |          |
|      |                 |                          | ED-15F       | ED-30FT | EDU-18F | EDU-36FT |
| 62   | 2185400         | R.F.Right End Post Wires |              | 1       |         |          |
| Cont | 2185401         | R.F.Right End Post Wires |              | 1       |         | 1        |
| 63   | <b>G01296-1</b> | <b>Pilot Red 240V</b>    |              |         | 1       | 2        |
| 64   | 1902919         | Garland Nameplate 4"     | 1            | 1       | 1       | 1        |
| 65*  | 2184400         | Wiring Diagram           | ED-15F - DOM |         |         |          |
|      | 2184500         | Wiring Diagram           | ED-15F - EXP |         |         |          |
| 66*  | 2184600         | Wiring Diagram           | ED-30F - DOM |         |         |          |
|      | 2184700         | Wiring Diagram           | ED-30F - EXP |         |         |          |
| 67*  | 2184501         | Wiring Diagram           | EDU-18F      |         |         |          |
| 68*  | 2184701         | Wiring Diagram           | EDU-36F      |         |         |          |

\* NOT ULLUSTRATED

**RECOMMENDED STOCK PARTS**

**GARLAND PARTS IDENTIFICATION**  
Revision History

| REV. # | PAGE # | ITEM #  | NOTE                                | DATE      |
|--------|--------|---------|-------------------------------------|-----------|
| 4      | 20     |         | New Drawing                         | Dec. 4/02 |
|        | 21     | 1B      | New Part Number added (2186199)     |           |
|        |        | 10      | New Knob Kit number added (4512115) |           |
|        |        | 11B     | New Part numbers added              |           |
|        |        | 11C     |                                     |           |
| 5      | 8      | 13 & 14 | Swicthed numbers                    | Feb 25/04 |
|        | 10     | 31      | Asterisk deleted                    |           |
|        | 24     |         | Item # 16 was # 64 (Error)          |           |
|        | 28     | 67      | Part number 2145801 - was 21445801  |           |
|        | 33     | 57b     | Part number 078109-1 Added          |           |



## NOTES

 GARLAND