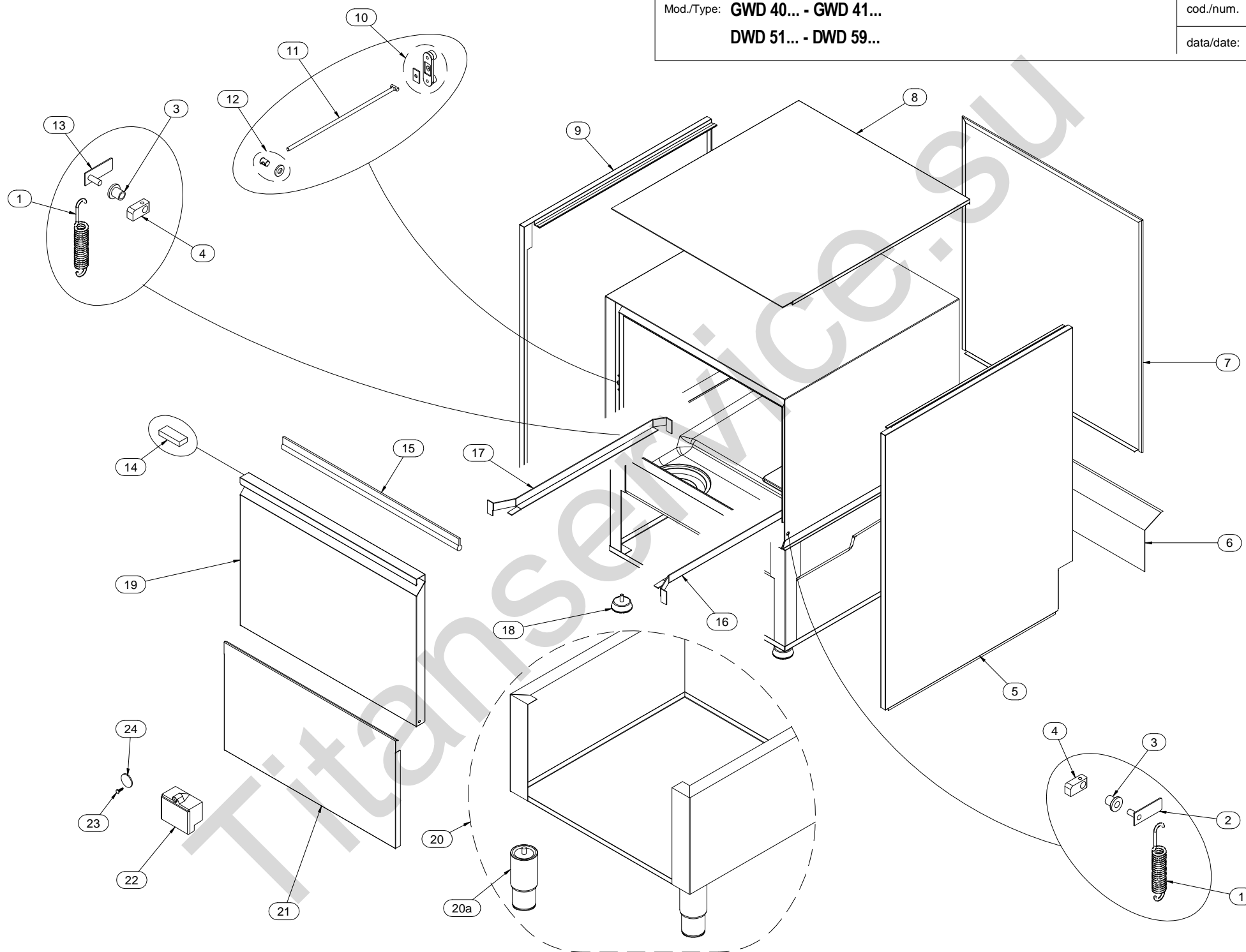


Mod./Type: GWD 40... - GWD 41...

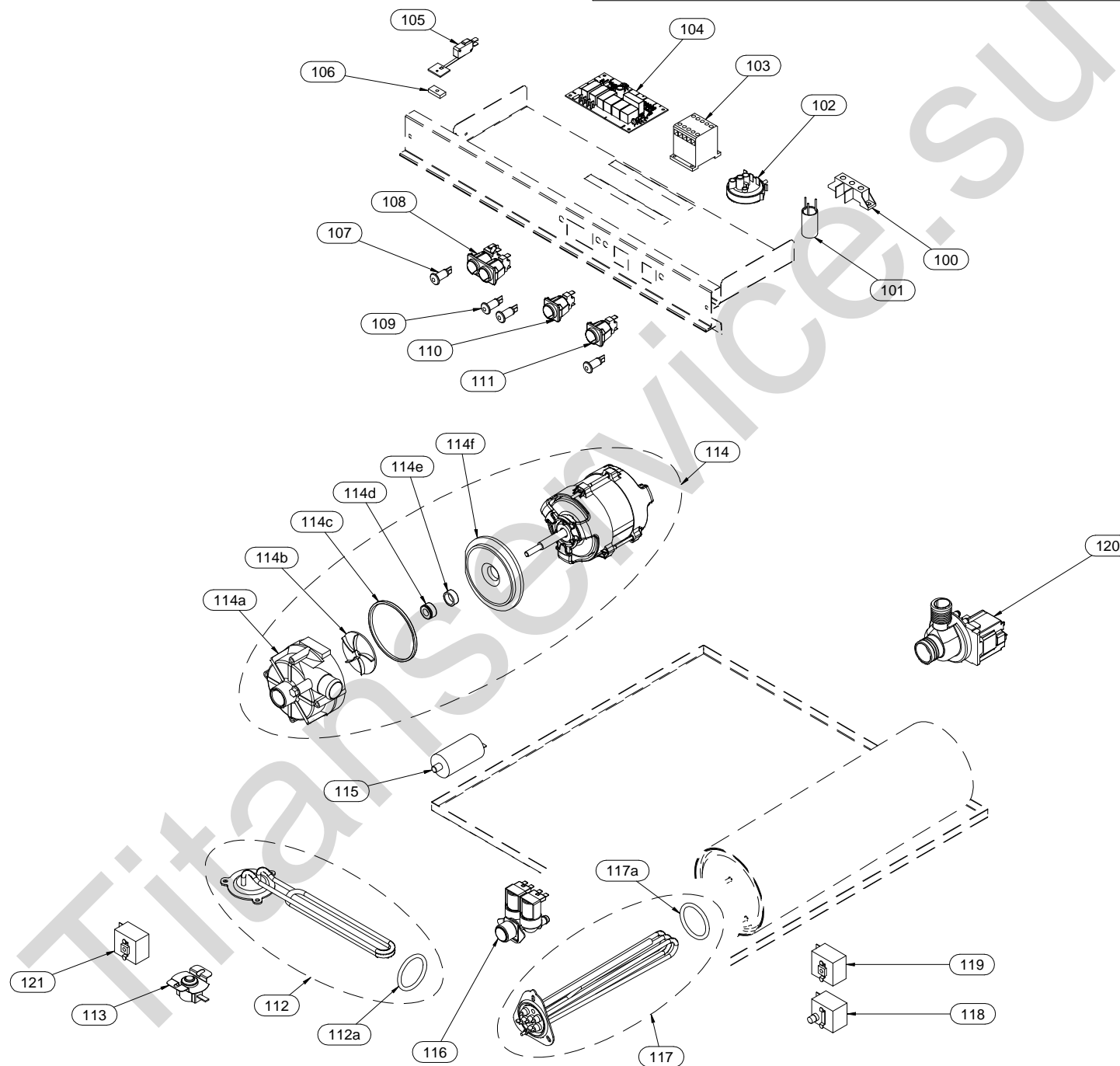
DWD 51... - DWD 59...

cod./num. 2532219.00

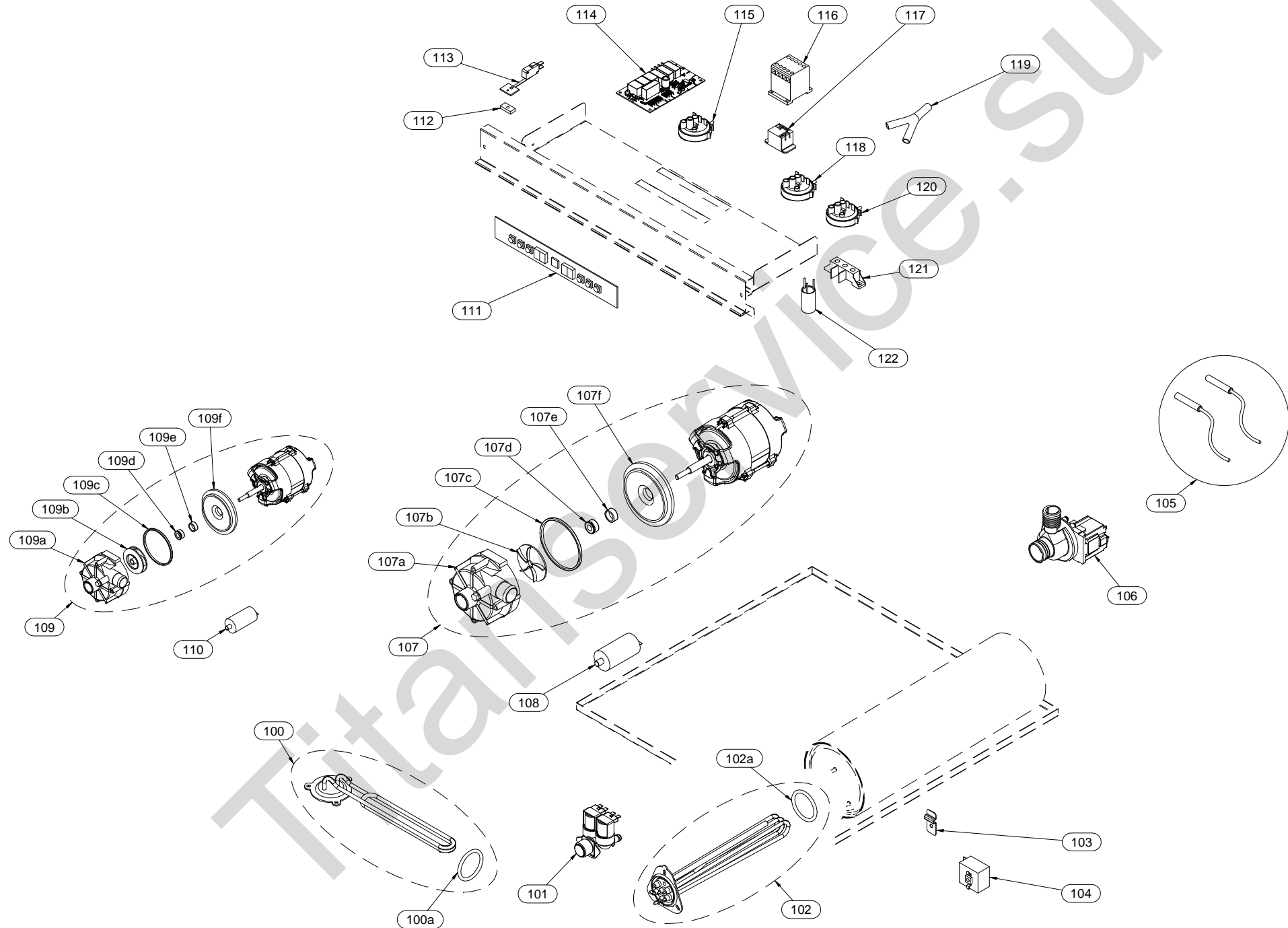
data/date: 29/05/2015



Mod.:	GWD 40... - GWD 41... DWD 51... - DWD 59...			cod. / num.		RICAMBIO CONSIGLIATO - RECOMMENDED SPARE PARTS - RECOMMANDÉES PIÈCES DÉTACHÉES - EMPFORHLENERSATZTEILE	GWD 40...	GWD 41...	DWD 51...	DWD 59...	NOTE	
				data / date								
				29/05/2015								
		rif. / ref.		2532219.00		Q.ty						
POS.	DESCRIZIONE	DESCRIPTION	DENOMINATION	BENENNUNG	COD.							
1	MOLLA	SPRING	RESSORT	FEDER	260.018.00		1					
					260.017.00			1				
					260.012.00				1	1		
2	PERNO CERNIERA	JOINT STUD	GOUJON DE LA CHARNIÈRE	SCHARNIERBOLZEN	412.037.00		1	1	1	1		
3	BOCCOLA	PLAIN BEARING	PALIER LISSE	BUCHSE	451.099.00		2	2	2	2		
4	SUPPORTO	SUPPORT	SUPPORT	UNTERSTÜTZUNG	451.115.00		2	2	2	2		
5	FIANCO DX	RIGHT SIDE	CÔTÉ DROITE	SEITENWAND RECHTS	421.101.00		1					
					421.103.00			1				
					421.029.00				1			
					421.134.00					1		
6	PROTEZIONE	PROTECTION	PROTECTION	SCHUTZ	421.078.14		1	1				
					421.036.00				1	1		
7	PANNELLO POSTERIORE	BACK PANEL	PANNEAU POSTERIEUR	HINTERBRETT	421.084.14		1	1				
					421.033.00				1			
					421.136.00					1		
8	COPERTURA	COVER	COUVERTURE	ABDECKUNG	421.105.00		1	1				
					421.032.00				1			
					421.157.00					1		
9	FIANCO SX	LEFT SIDE	COTÉ GAUCHE	SEITENWAND LINKS	421.102.00		1					
					421.104.00			1				
					421.030.00				1			
					421.135.00					1		
10	PARACOLPI	BUFFER	PARA-CHOC	BUMPERS	256.441.00		2	2	2	2		
11	ASTA PORTA	DOOR ROD	TIGE DE SUPPORT PORTE	VERSTEIGERUNG DES TÜR	412.094.00		2	2	2	2		
12	FERMO PORTA	DOORSTOP	ARRETE DE TIGE	TÜRVERRIEGELUNG	256.442.00		2	2	2	2		
13	PERNO CERNIERA	JOINT STUD	GOUJON DE LA CHARNIÈRE	SCHARNIERBOLZEN	412.038.00		1	1	1	1		
14	MAGNETE	MAGNET	MAGNÉTO	MAGNET	461.070.00		1	2	3	4		
15	GUARNIZIONE	SEAL	JOINT	DICHTUNG	453.007.00	*	1	1				
					453.010.00	*			1	1		
16	GUIDA CESTO DX	RIGHT RACK SLIDE	GLISSIÈRE DROITE PANIER	KORBSCHIENEN RECHTS	423.088.24		1	1				
					423.119.22				1	1		
17	GUIDA CESTO SX	LEFT RACK SLIDE	GLISSIÈRE GAUCHE PANIER	KORBSCHIENEN LINKS	423.089.24		1	1				
					423.118.22				1	1		
18	PIEDINO	FOOT	PIED	STELLFUSS	451.071.00		1	1		-		
					451.130.00				1	-	-	
19	PORTA	DOOR	PORTE	TÜR	411.067.00		1					
					411.066.00			1				
					411.042.00				1			
					411.109.00					1		
20	BASAMENTO	BASE UNIT	BASE	UNTERBAU	410.015.00		-	-	-	1		
20a	PIEDINO	FOOT	PIED	STELLFUSS	912.033.00		-	-	-	4		
21	PANNELLO FRONTALE	FRONTAL PANEL	PANNEAU FRONTAL	FRONTPLATTE	421.106.00		1	1				
					421.161.00				1	1		
22	CONTENTITORE BRILLANTANTE	RINSE AGENT DISPENSER	DISTRIBUTEUR PRODUIT DE RINÇAGE	KLARSPÜLMITTELBEHÄLTHER	451.072.00		1	1	-	-		
23	PERNO CHIUSURA	LINCHPIN FASTENER	PIVOT DE FERMETURE	VERSCHLUßSTIFT	441.082.00		1	1	-	-		
24	CHIUSURA	LOCK	FERMETURE	SCHLUSS	451.088.00		1	1	-	-		
25												
26												
27												
28												



Mod.:	DW 50... - DWD 51...			cod. / num. 2532178.00		RICAMBI CONSULENTI - RECOMMENDED SPARE PARTS - RECHAMBRÉS EMPFOHLENEN ERSATZTEILE	DW 50	DW 50 A	DW 50 PS	DW 50 A PS	DW 51	DW 51 A	DW 51 PS	DW 51 A PS	DWD 51	DWD 51 A	DWD 51 PS	DWD 51 A PS	DWD 59	DWD 59 A	DWD 59 PS	DWD 59 A PS	NOTE		
	DW 51... - DWD 59...			data / date 21/05/2015			Q.ty																		
	rif. / ref. 2532177.00																								
POS.	DESCRIZIONE	DESCRIPTION	DENOMINATION	BENENNUNG	COD.																				
100	MORSETTIERA	TERMINAL BOARD	BORNES	KLEMMENBRETT	463.026.00		1	1	1	1															
					663.036.00																				
101	FILTRO ANTIDISTURBO	LIMITER FILTER	FILTRE DE BRUIT	ANTIJAMMING FILTER	464.067.00		1	1	1	1	3	3	3	3	3	3	3	3	3	3	3	3	3		
102	PRESSOSTATO	PRESSURE SWITCH	PRESSOSTAT	NIVEAUSCHALTER	462.003.00	*	1	1	1	1	1	1	1	1	1	1	1	1	1	1	1	1	1		
103	CONTATTORE	CONTACTOR	CONTACTEUR	FERNSCHALTER	461.021.00	*	-	-	-	-	2	2	2	2	2	2	2	2	2	2	2	2	2		
104	SCHEDA RELÉ	RELAY BOARD	CARTE DE RELAIS	RELAISPLATINE	256.444.00	*	1	1	1	1	1	1	1	1	1	1	1	1	1	1	1	1	1		
					256.444.13	*	1	1	1	1	1	1	1	1	1	1	1	1	1	1	1	1	1	1	
105	MICRO PORTA	DOOR MICROSWITCH	MICROINTERRUPTEUR PORTE	TUERKONTAKT SCHALTER	412.075.00	*	1	1	1	1	1	1	1	1	1	1	1	1	1	1	1	1	1		
106	MAGNETE	MAGNET	MAGNÉTO	MAGNET	461.043.00		1	1	1	1	1	1	1	1	1	1	1	1	1	1	1	1	1		
107	LAMPADA SPIA VERDE	GREEN INDICATOR LIGHT	LAMPE TEMOIN VERTE	GRUENE KONTROLLAMPE	463.014.00		1	1	1	1	1	1	1	1	1	1	1	1	1	1	1	1	1		
108	INTERRUTTORE DOPPIO	DOUBLE SWITCH	INTERRUPTEUR DOUBLE	DOPPELSCHALTER	461.093.00	*	1	1	1	1	1	1	1	1	1	1	1	1	1	1	1	1	1		
109	LAMPADA SPIA ARANCIO	ORANGE INDICATOR LIGHT	LAMPE TEMOIN ORANGE	ORANGE KONTROLLAMPE	463.012.00		2	3	2	3	2	3	2	3	2	3	2	3	2	3	2	3	2	3	
110	INTERRUTTORE	SWITCH	INTERRUPTEUR	SCHALTER	461.094.00	*	1	1	1	1	1	1	1	1	1	1	1	1							
					461.098.00	*																			
111	PULSANTE	BUTTON	BOUTON	TASTE	461.092.00	*	-	1	-	1	-	1	-	1	-	1	-	1	-	1	-	1	-	1	
112	RESISTENZA VASCA	SAFETY RELAY CONTACTS	RES. CUVE	TANKHEIZKORPER	465.008.14	*	1	1	1	1	1	1	1	1	1	1	1	1	1	1	1	1	1		
112a	GUARNIZIONE RESISTENZA	HEATING ELEMENT GASKET	JOINT DE LA RÉSISTENCE	WIDERSTAND-DICHTUNG	0835.53374.1		1	1	1	1	1	1	1	1	1	1	1	1	1	1	1	1	1		
113	TERMOSTATO VASCA	TUB THERMOSTAT	THERMOSTAT CUVE	TANKTHERMOSTAT	461.082.00	*	1	1	1	1	1	1	1	1	-	-	-	-	-	-	-	-	-		
114	ELETTROPOMPA	MOTOR PUMP	ELECTROPOMPE	ELEKTROPUMPE	464.013.00		1	1	1	1	1	1	1	1	1	1	1	1							
					464.015.00																				
114a	COCLEA	HELIX SCREW	PELLETEUSE HELICOÏDALE	FÖRDERSCHNECKE	464.023.00		1	1	1	1	1	1	1	1	1	1	1	1	1	1	1	1	1		
114b	GIRANTE	IMPELLER	ROUE	IMPELLER	464.021.00		1	1	1	1	1	1	1	1	1	1	1	1							
					464.031.00																				
114c	GUARNIZIONE	SEAL	JOINT	DICHTUNG	464.019.00		1	1	1	1	1	1	1	1	1	1	1	1	1	1	1	1	1		
114d	TENUTA ROTANTE	ROTATING SEAL	BOURRAGE DE POMPE	DREHDICHTUNG	464.020.00		1	1	1	1	1	1	1	1	1	1	1	1	1	1	1	1	1		
114e	TENUTA FISSA	FIXED SEAL	ÉTANCHÉITÉ FIXE	FIXE DICHTUNG	464.026.00		1	1	1	1	1	1	1	1	1	1	1	1	1	1	1	1	1	1	
114f	SUPPORTO COCLEA	HELIX SCREW SUPPORT	SUPPORT PELLETEUSE HELICOÏDALE	ABSTÜTZUNG FÜR FÖRDERSCHNECKE	464.018.00		1	1	1	1	1	1	1	1	1	1	1	1	1	1	1	1	1	1	
115	CONDENSATORE	CONDENSER	CONDENSEUR	KONDENSATOR	464.042.00		1	1	1	1	1	1	1	1	1	1	1	1							
					464.110.00																				
116	ELETTROVALVOLA	SOLENOID VALVE	ELECTROVANNE	ELEKTROVENTIL	462.000.00	*	1		1		1		1		1		1		1		1				
					256.371.00	*		1		1		1		1		1		1		1				1	
117	RESISTENZA BOILER	BOILER RESISTANCE	RES. CHAUFFE- EAU	BOILERHEIZKORPER	465.011.00	*	1	1	1	1															
					465.010.13	*					1	1	1	1	1	1	1	1							
					465.006.00	*																			
117a	GUARNIZIONE RESISTENZA	HEATING ELEMENT GASKET	JOINT DE LA RÉSISTENCE	WIDERSTAND-DICHTUNG	0835.53470.1		1	1	1	1	1	1	1	1	1	1	1	1	1	1	1	1	1		
118	TERMOSTATO SICUREZZA	SAFETY THERMOSTAT	THERMOSTAT DE SECURITÉ	SICHERHEITSTHERMOSTAT	461.071.00	*	1	1	1	1	1	1	1	1	1	1	1	1	1	1	1	1	1	1	
119	TERMOSTATO BOILER	BOILER THERMOSTAT	THERMOSTAT CHAUFFE-EAU	BOILER-THERMOSTAT	461.016.00	*	1	1	1	1	1	1	1	1	1	1	1	1	1	1	1	1	1	1	
120	POMPA SCARICO	EXHAUST PUMP	ELECTROPOMPE DE VIDANGE	ABLAUF PUMPE	464.037.00		-	-	1	1	-	-	1	1	1	1	1	1	1	1	1	1	1	1	
121	TERMOSTATO VASCA	TUB THERMOSTAT	THERMOSTAT CUVE	TANKTHERMOSTAT	461.015.00	*	-	-	-	-	-	-	-	-	1	1	1	1	1	1	1	1	1	1	
122																									
123																									
124																									
125																									
126																									
127																									
128																									
129																									
130																									
131																									
132																									
133																									
134																									
135																									
136																									
137																									



Mod.:	DWD 59...DT			cod. / num. 2532227.00		RICAMBI CONSIGLIATI - RECOMMENDED SPARE PARTS - PIÉCES DÉTACHÉES RECOMMANDÉES - EIMPFOLGENEN ERSATZTEILE	DWD 59 DT	DWD 59 A DT	DWD 59 PS DT	DWD 59 A PS DT	DWD 59 BT DT	DWD 59 A BT DT	DWD 59 PS BT DT	DWD 59 A PS BT DT	NOTE
				data / date 28/05/2015											
				rif. / ref. 2532223.00											
POS.	DESCRIZIONE	DESCRIPTION	DENOMINATION	BENENNUNG	COD.		Q. tà								
100	RESISTENZA VASCA	SAFETY RELAY CONTACTS	RES. CUVE	TANKHEIZKORPER	465.008.14	*	1	1	1	1	1	1	1	1	
100a	GUARNIZIONE RESISTENZA	HEATING ELEMENT GASKET	JOINT DE LA RÉSISTENCE	WIDERSTAND-DICHTUNG	0835.53374.1		1	1	1	1	1	1	1	1	
101	ELETTROVALVOLA	SOLENOID VALVE	ELECTROVANNE	ELEKTROVENTIL	462.000.00	*	1		1	1	1				
					256.371.00	*		1		1	1		1		
102	RESISTENZA BOILER	BOILER RESISTANCE	RES. CHAUFFE- EAU	BOILERHEIZKORPER	465.006.00	*	1	1	1	1	1	1	1	1	
102a	GUARNIZIONE RESISTENZA	HEATING ELEMENT GASKET	JOINT DE LA RÉSISTENCE	WIDERSTAND-DICHTUNG	0835.53470.1		1	1	1	1	1	1	1	1	
103	FISSAGGIO SONDA VASCA	TANK PROBE FIXING	FIXATION SONDE CUVE	BEFESTIGUNG DER PROBE AM TANK	423.212.00		1	1	1	1	1	1	1	1	
104	TERMOSTATO SICUREZZA	SAFETY THERMOSTAT	THERMOSTAT DE SECURITÉ	SICHERHEITSTHERMOSTAT	461.071.00	*	1	1	1	1	1	1	1	1	
105	SONDE	PROBE ASSEMBLY	GROUPE SONDE	SONDEGRUPPE	468.119.00	*	1	1	1	1	1	1	1	1	
106	POMPA SCARICO	EXHAUST PUMP	ELECTROPOMPE DE VIDANGE	ABLAUF PUMPE	464.037.00		-	-	1	1	-	-	1	1	
107	ELETTROPOMPA	MOTOR PUMP	ELECTROPOMPE	ELEKTROPUMPE	464.015.00		1	1	1	1	1	1	1	1	
107a	COCLEA	HELIx SCREW	PELLETEUSE HELICOÏDALE	FÖRDERSCHNECKE	464.023.00		1	1	1	1	1	1	1	1	
107b	GIRANTE	IMPELLER	ROUE	IMPELLER	464.031.00		1	1	1	1	1	1	1	1	
107c	GUARNIZIONE	SEAL	JOINT	DICHTUNG	464.019.00		1	1	1	1	1	1	1	1	
107d	TENUTA ROTANTE	ROTATING SEAL	BOURRAGE DE POMPE	DREHDICHTUNG	464.020.00		1	1	1	1	1	1	1	1	
107e	TENUTA FISSA	FIXED SEAL	ÉTANCHÉITÉ FIXE	FIXE DICHTUNG	464.026.00		1	1	1	1	1	1	1	1	
107f	SUPPORTO COCLEA	HELIx SCREW SUPPORT	SUPPORT PELLETEUSE HELICOÏDALE	ABSTÜTZUNG FÜR FÖRDERSCHNECKE	464.018.00		1	1	1	1	1	1	1	1	
108	CONDENSATORE	CONDENSER	CONDENSEUR	KONDENSATOR	464.110.00		1	1	1	1	1	1	1	1	
109	ELETTROPOMPA	MOTOR PUMP	ELECTROPOMPE	ELEKTROPUMPE	464.125.00		-	-	-	-	1	1	1	1	
109a	COCLEA	HELIx SCREW	PELLETEUSE HELICOÏDALE	FÖRDERSCHNECKE	464.138.00		-	-	-	-	1	1	1	1	
109b	GIRANTE	IMPELLER	ROUE	IMPELLER	464.139.00		-	-	-	-	1	1	1	1	
109c	GUARNIZIONE	SEAL	JOINT	DICHTUNG	464.140.00		-	-	-	-	1	1	1	1	
109d	TENUTA ROTANTE	ROTATING SEAL	BOURRAGE DE POMPE	DREHDICHTUNG	464.141.00		-	-	-	-	1	1	1	1	
109e	TENUTA FISSA	FIXED SEAL	ÉTANCHÉITÉ FIXE	FIXE DICHTUNG	464.026.00		-	-	-	-	1	1	1	1	
109f	SUPPORTO COCLEA	HELIx SCREW SUPPORT	SUPPORT PELLETEUSE HELICOÏDALE	ABSTÜTZUNG FÜR FÖRDERSCHNECKE	464.142.00		-	-	-	-	1	1	1	1	
110	CONDENSATORE	CONDENSER	CONDENSEUR	KONDENSATOR	464.042.00		-	-	-	-	1	1	1	1	
111	USER SCHEDA TIMER	USER TIMER CARD	FICHE MINUTERIE UTILISATEUR	USER ZEITSCHALTER KARTe	256.372.00	*	1	1	1	1	1	1	1	1	
112	MAGNETE	MAGNET	MAGNÉTO	MAGNET	461.043.00		1	1	1	1	1	1	1	1	
113	MICRO PORTA	DOOR MICROSWITCH	MICROINTERRUPTEUR PORTE	TUERKONTAKT SCHALTER	412.075.00	*	1	1	1	1	1	1	1	1	
114	SCHEDA RELÉ	RELAY BOARD	CARTE DE RELAIS	RELAISPLATINE	256.445.00	*	1	1	1	1	1	1	1	1	
115	PRESSOSTATO	PRESSURE SWITCH	PRESSOSTAT	NIVEAUSCHALTER	462.012.00	*	-	-	-	-	-	-	1	1	
116	CONTATTORE	CONTACTOR	CONTACTEUR	FERNSCHALTER	461.021.00	*	1	1	1	1	1	1	1	1	
117	RELÉ	RELAY	RELAY	RELAIS	461.083.00	*	1	1	1	1	1	1	1	1	
118	PRESSOSTATO	PRESSURE SWITCH	PRESSOSTAT	NIVEAUSCHALTER	462.003.00	*	1	1	1	1	1	1	1	1	
119	RACCORDO A Y	Y PIECE UNION FOR AIR SWITCH	RACCORD À Y	Y ANSCHLUSS	451.116.00		-	-	1	1	-	-	1	1	
120	PRESSOSTATO	PRESSURE SWITCH	PRESSOSTAT	NIVEAUSCHALTER	462.012.00	*	-	-	1	1	-	-	1	1	
121	MORSETTIERA	TERMINAL BOARD	BORNES	KLEMMENBRETT	663.036.00		1	1	1	1	1	1	1	1	
122	FILTRO ANTIDISTURBO	LIMITER FILTER	FILTRE DE BRUIT	ANTIJAMMING FILTER	464.067.00		3	3	3	3	3	3	3	3	
123															
124															
125															
126															
127															
128															
129															
130															
131															
132															

Mod./Type: DWD 45...

DW 5.... - DWD 51... - DWD 59... - HT 5...

cod./num. 2532183.00

data/date: 25/05/2015

