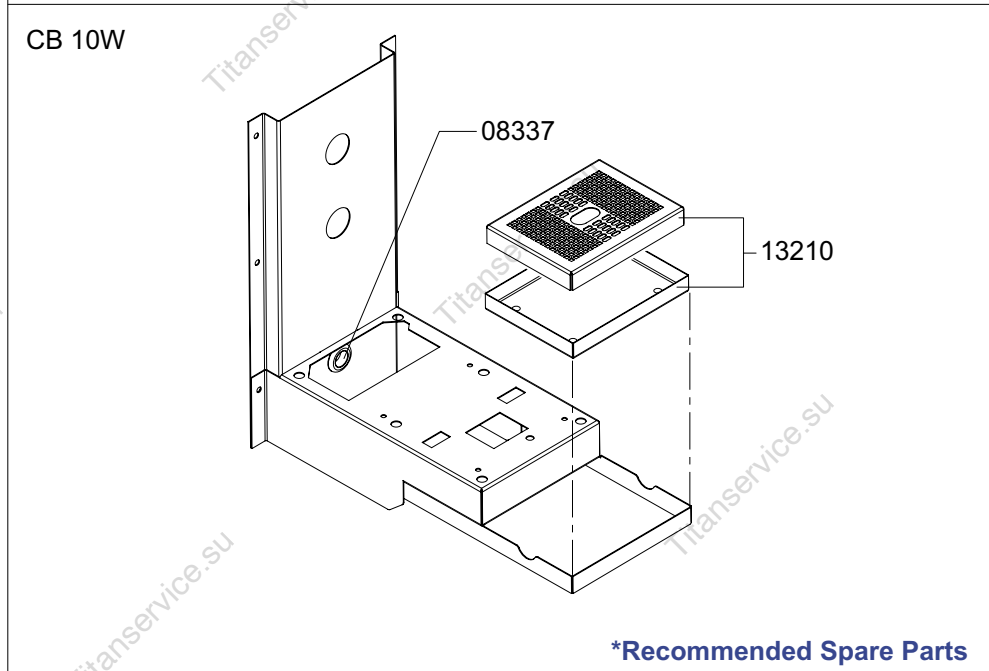
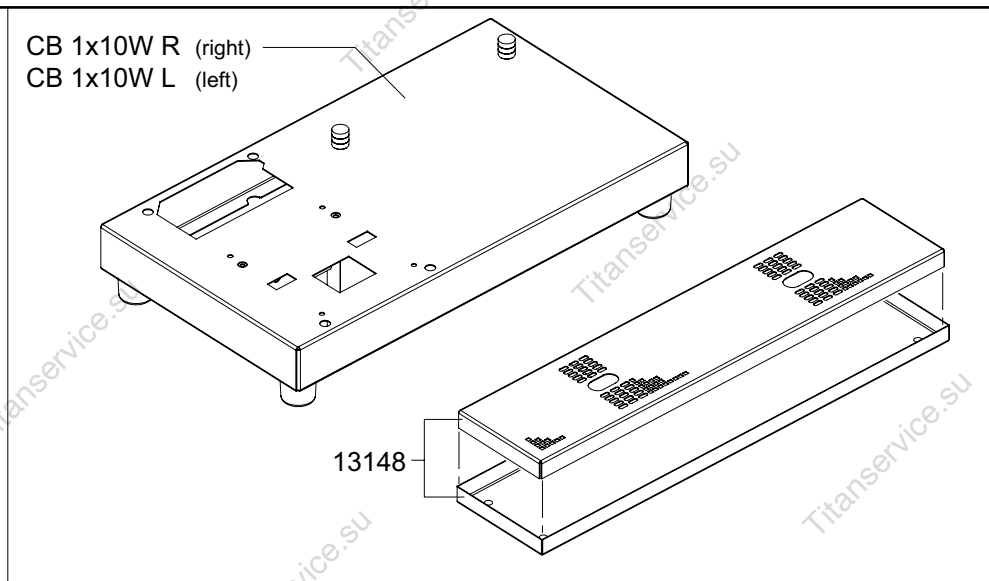
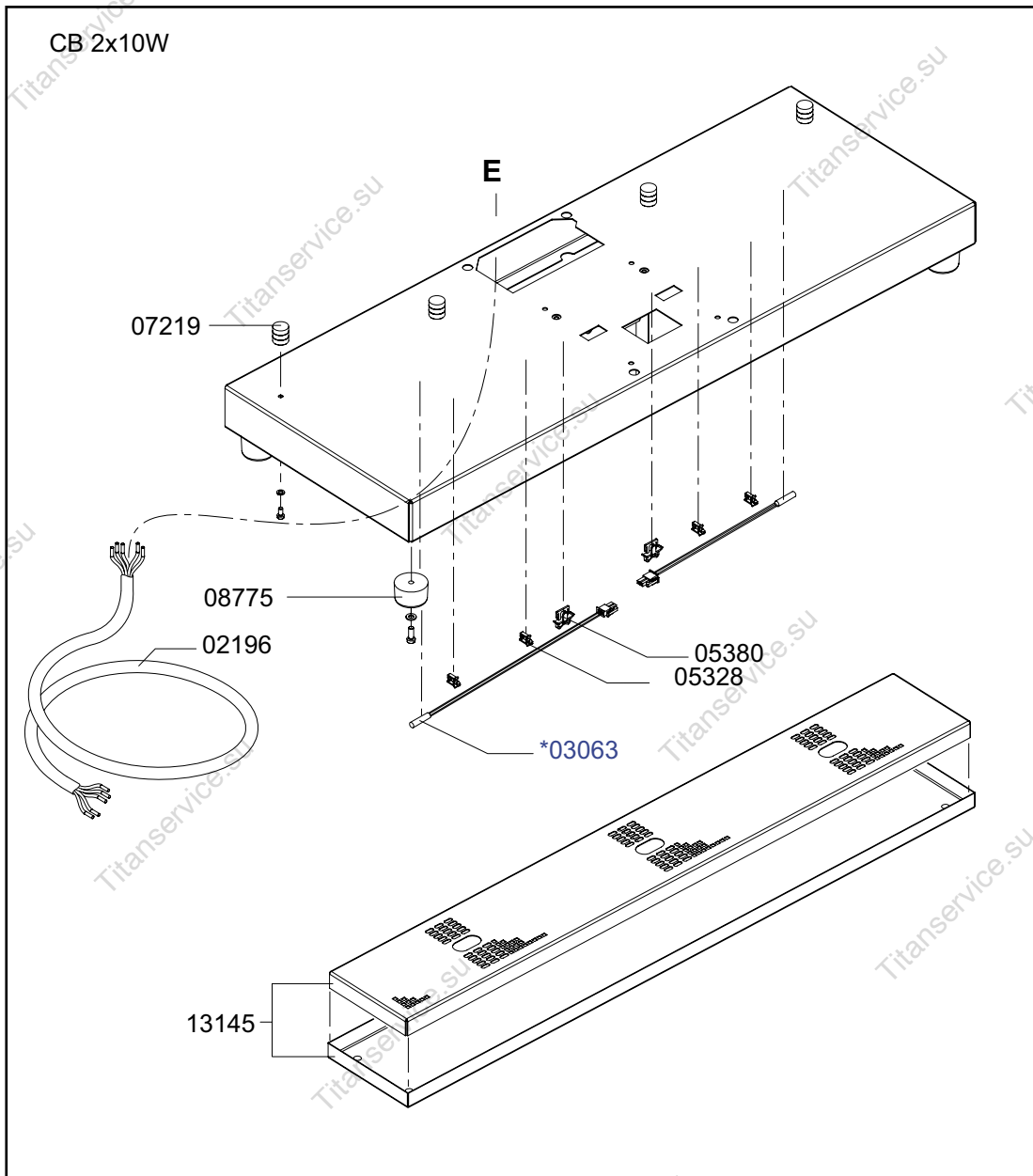
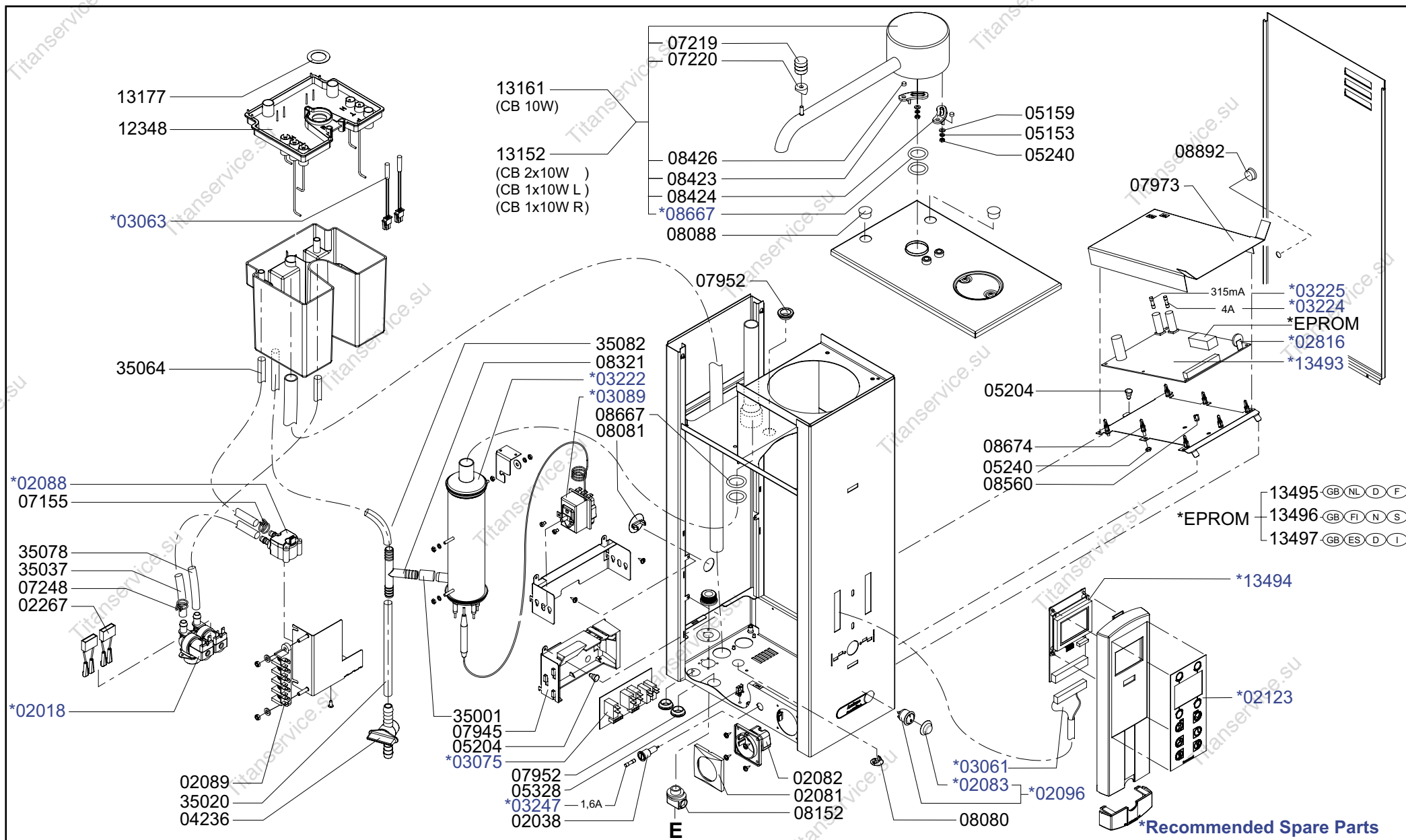


|  |                         |  |                 |
|--|-------------------------|--|-----------------|
| Type : CB 2x10W, CB 1x10W L/R, CB 10W      | From mach.nr. : 4M23917 | Page : 1-4   | Drawer : A.V.   |
| Artikel : 10655, 10660/10665, 10675        | Date : 10/03            | Rev. : 1   | Date : 05-04-06 |
| Rated voltage : 3N~ 380-415V 50-60Hz 8400W | <b>Spare Parts Info</b> | ***** <b>Animo</b> *****<br><b>Assen - Holland</b> |                 |



**\*Recommended Spare Parts**

|  |                         |  |                 |
|--|-------------------------|--|-----------------|
| Type : CB 2x10W, CB 1x10W L/R, CB 10W      | From mach.nr. : 4M23917 | Page : 2-4   | Drawer : A.V.   |
| Artikel : 10655, 10660/10665, 10675        | Date : 10/03            | Rev. : 1   | Date : 05-04-06 |
| Rated voltage : 3N~ 380-415V 50-60Hz 8400W | <b>Spare Parts Info</b> | ***** <b>Animo</b> *****<br><b>Assen - Holland</b> |                 |



Type : CB 2x10W, CB 1x10W L/R, CB 10W

Artikel : 10655, 10660/10665, 10675

Rated voltage : 3N~ 380-415V 50-60Hz 8400W

From mach.nr. : 4M23917

Date : 10/03

## Spare Parts Info

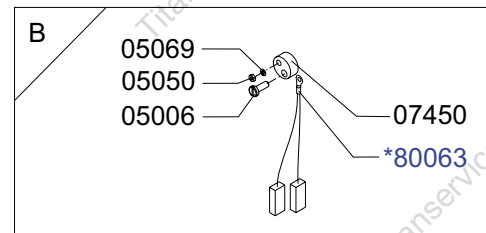
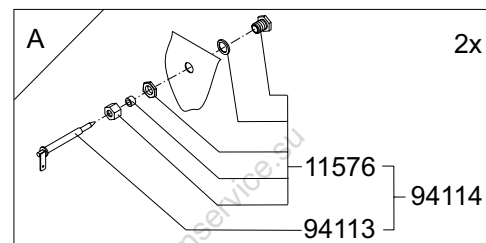
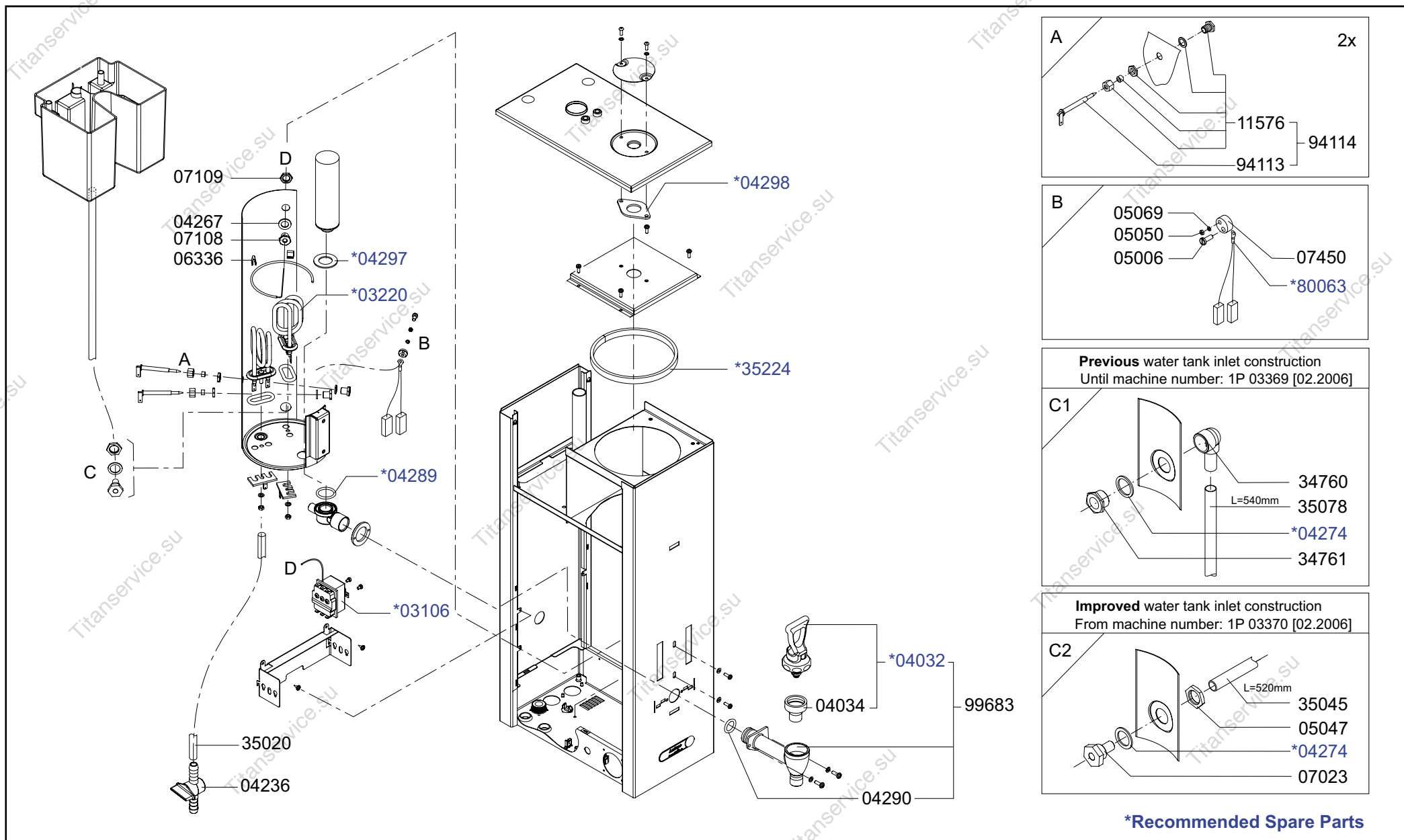
Page : 3-4

Rev. : 1

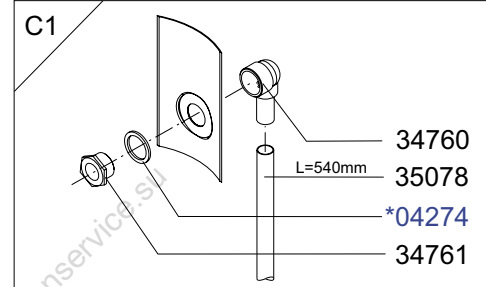
\*\*\*\*\* **Animo** \*\*\*\*\*  
Assen - Holland

Drawer : A.V.

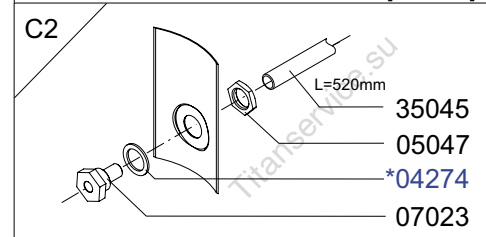
Date : 05-04-06



**Previous water tank inlet construction**  
Until machine number: 1P 03369 [02.2006]



**Improved water tank inlet construction**  
From machine number: 1P 03370 [02.2006]



**\*Recommended Spare Parts**

Type : CB 2x10W, CB 1x10W L/R, CB 10W  
Artikel : 10655, 10660/10665, 10675

From mach.nr. : 4M23917  
Date : 10/03

Page : 4-4  
Rev. : 1

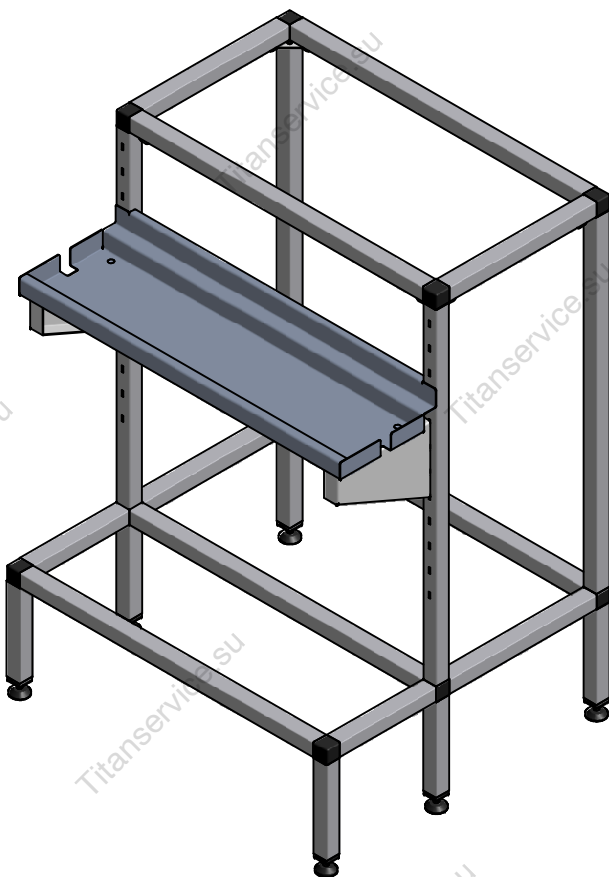
Drawer : A.V.  
Date : 05-04-06

Rated voltage : 3N~ 380-415V 50-60Hz 8400W

**Spare Parts Info**

\*\*\*\*\* **Animo** \*\*\*\*\*  
**Assen - Holland**

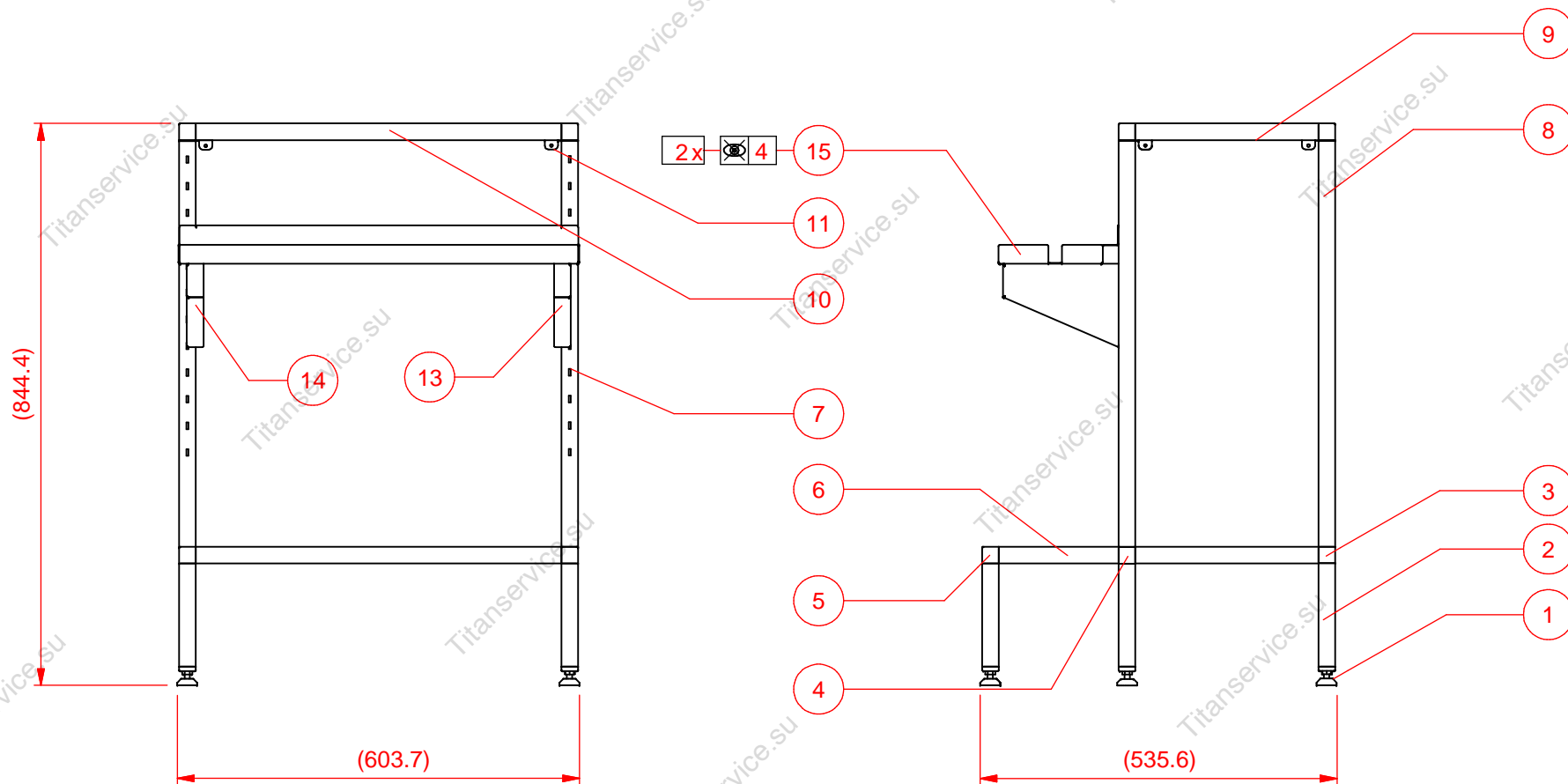




|    |   |                               |                |        |
|----|---|-------------------------------|----------------|--------|
| 15 | 1 | LEKBAKHOUDER ONDERST CB 1x10  |                | 68548. |
| 14 | 1 | LEKBAKSTEUN ONDERSTEL CB LI   |                | 68544  |
| 13 | 1 | LEKBAKSTEUN ONDERSTEL CB RE   |                | 68543  |
| 12 | 4 | METAALSCHROEF RVS M 5X40 CK   | niet afgebeeld | 05035  |
| 11 | 4 | BEUGEL ZIJWAND ONDERSTEL CB   |                | 68546  |
| 10 | 5 | PIJP RVS 25x25x1.2 L= 549     |                | 68537  |
| 9  | 4 | PIJP RVS 25x25x1.2 L= 275     |                | 68534  |
| 8  | 2 | PIJP RVS 25x25x1.2 L= 610     |                | 68386  |
| 7  | 2 | PIJP RVS 25x25x1.2 GAT L= 610 |                | 68532  |
| 6  | 2 | PIJP RVS 25x25x1.2 L= 180     |                | 68533  |
| 5  | 6 | BUISVERBINDING 3W             |                | 08614  |
| 4  | 2 | BUISVERBINDING 5W             |                | 08615  |
| 3  | 2 | BUISVERBINDING 4W             |                | 08616  |
| 2  | 6 | PIJP RVS 25x25x1.2 L= 155     |                | 68380  |
| 1  | 6 | STELVOETJES M8 COMBI-TUBE     |                | 08617  |

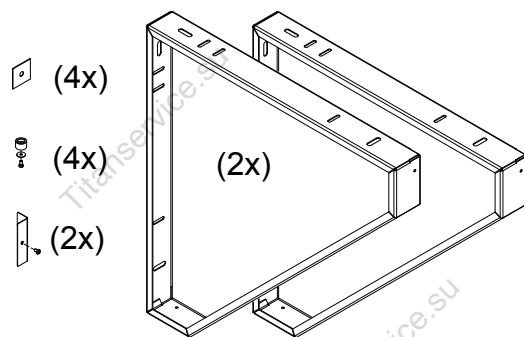
| STUK-NR   | AAN-TAL | BENAMING OF MATERIAAL  | AFMETINGEN OF OPMERKINGEN                       | ARTIKELNUMMER                         |
|---|---------|--|---|---------------------------------------|
| <div> <div> SYMBOLLEN VOLGENS<br/>ANIMO-NORM-02 IK-4.11 </div> <div> MAATTOLERANTIES VOLGENS<br/>ANIMO-NORM-01 IK-4.8 </div> <div> REV. 01 31-08-04<br/>STUKLIJST Aangepast </div> </div> |         |  |   |                                       |
| <div> <div>PROJECTIE</div> <div> </div> </div>  |         | <div> SCHAAL: 1:10<br/> MAATEENHEID: mm<br/> DATUM: 13-4-2004 </div> | <div> GETEKEND: W.B<br/> GECONTROLEERD:  </div> | <div> BLAD 1 van 2<br/> T10731 </div> |
| <div> <div>Animo</div> <div>ONDERSTEL RVS CB 1x10 (W) R/L</div> </div>  |         |  |   | <div> A4 </div>                       |





| STUK-NR   | AANTAL | BENAMING OF MATERIAAL | AFMETINGEN OF OPMERKINGEN               | ARTIKELNUMMER |
|---|--------|-----------------------|---|---------------|
| <div> <div> SYMBOLLEN VOLGENS<br/>ANIMO-NORM-02 IK-4.11 </div> <div> MAATTOLERANTIES VOLGENS<br/>ANIMO-NORM-01 IK-4.8 </div> <div> GETEKEND: W.B. </div> <div> GECONTROLEERD: </div> </div> |        |                       |   |               |
| <div> <div>PROJECTIE</div> <div> </div> </div>  |        |                       | REV. 01 31-08-04<br>STUKLIJST Aangepast |               |
| <div> <div> </div> <div> SCHAAL: 1:10<br/>MAATEENHEID: mm<br/>DATUM: 13-4-2004 </div> </div>  |        |                       | BLAD 2 van 2<br>T10731                  | A4            |

ONDERSTEL RVS CB 1x10 (W) R/L



Art.nr. 10740

| CB (W) | X (mm) |
|--------|--------|
| 1x5    | 475    |
| 2x5    | 715    |
| 1x10   | 544    |
| 2x10   | 852    |
| 1x20   | 598    |
| 2x20   | 960    |

Advice hight 800 - 900 mm

X (h.o.h)

20L  
5+10L

Min. Ø 8mm

