

Type : CB 2x10W, CB 1x10W L/R, CB 10W  
 Artikel : 10655, 10660/10665, 10675

From mach.nr. : 4M23917  
 Date : 10/03

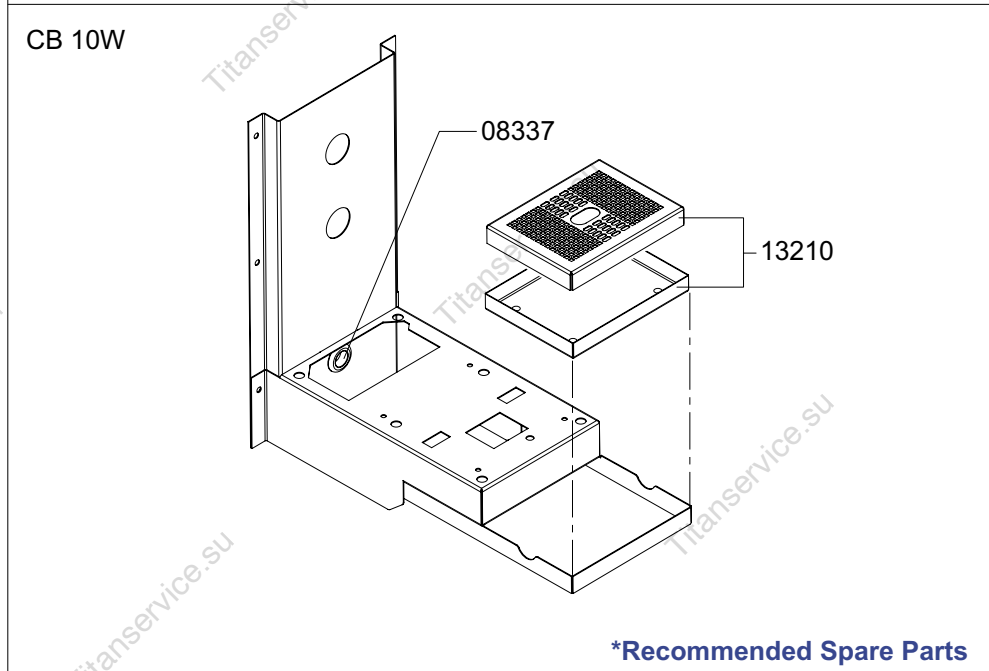
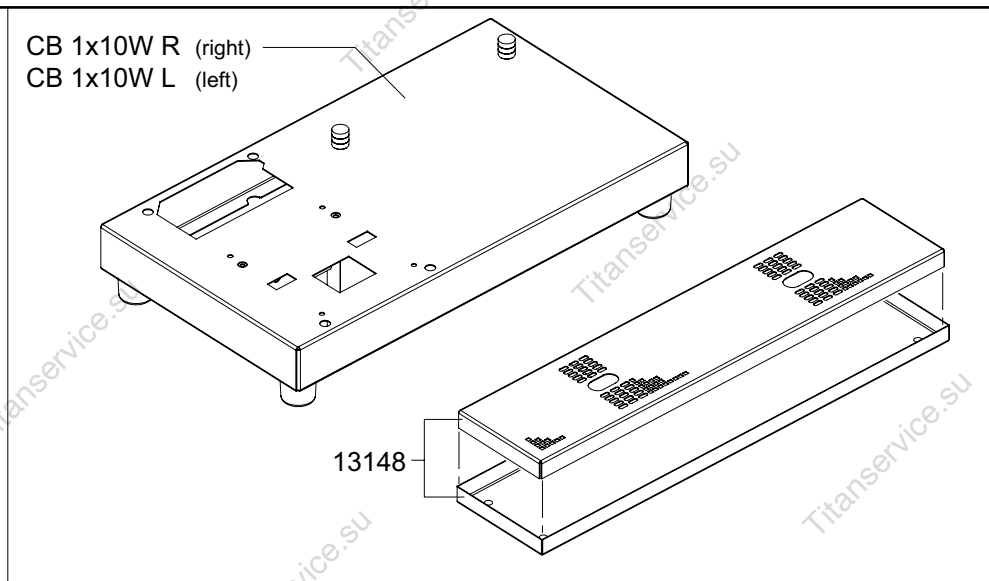
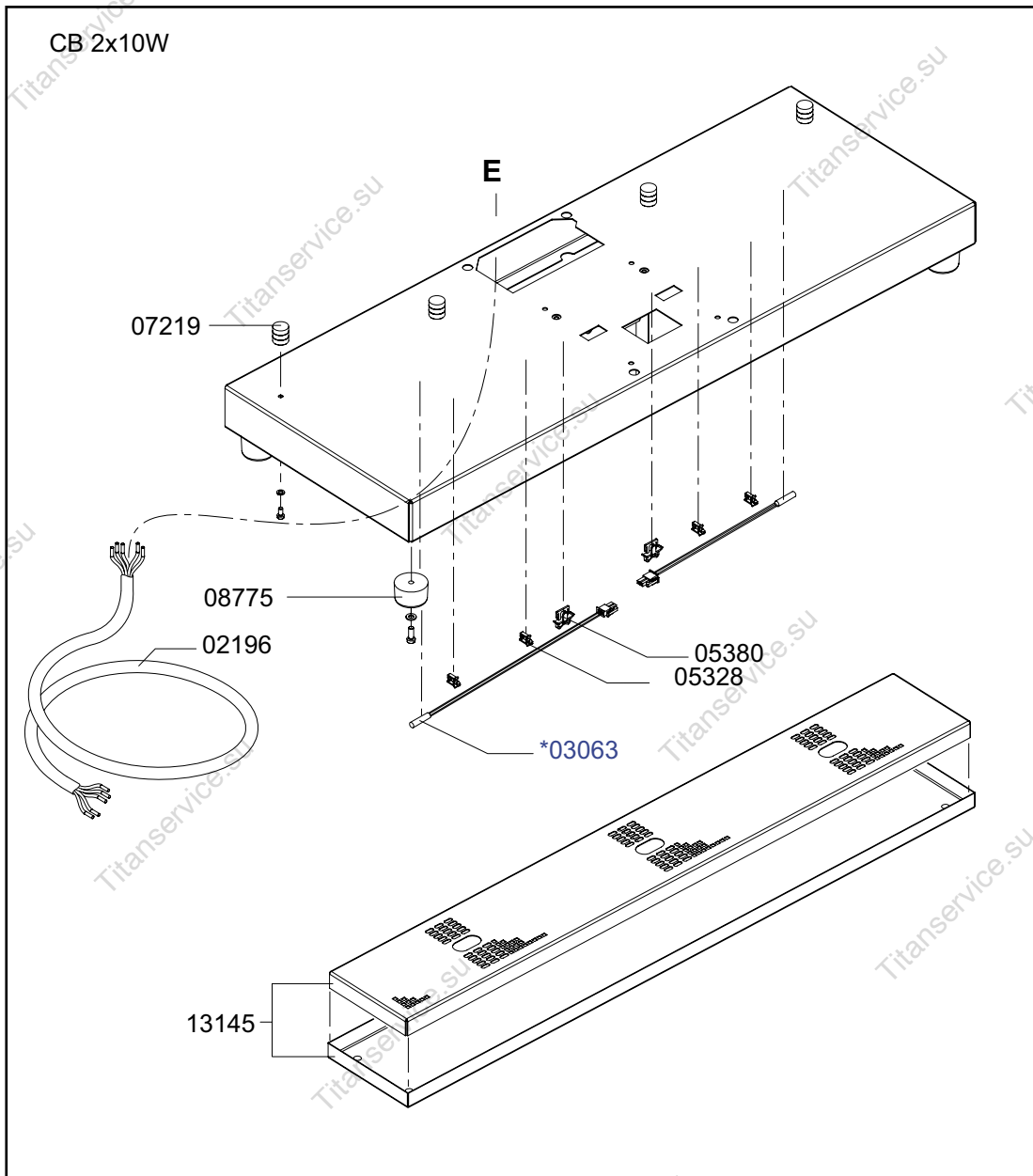
Page : 1-4  
 Rev. : 1

Drawer : A.V.  
 Date : 05-04-06

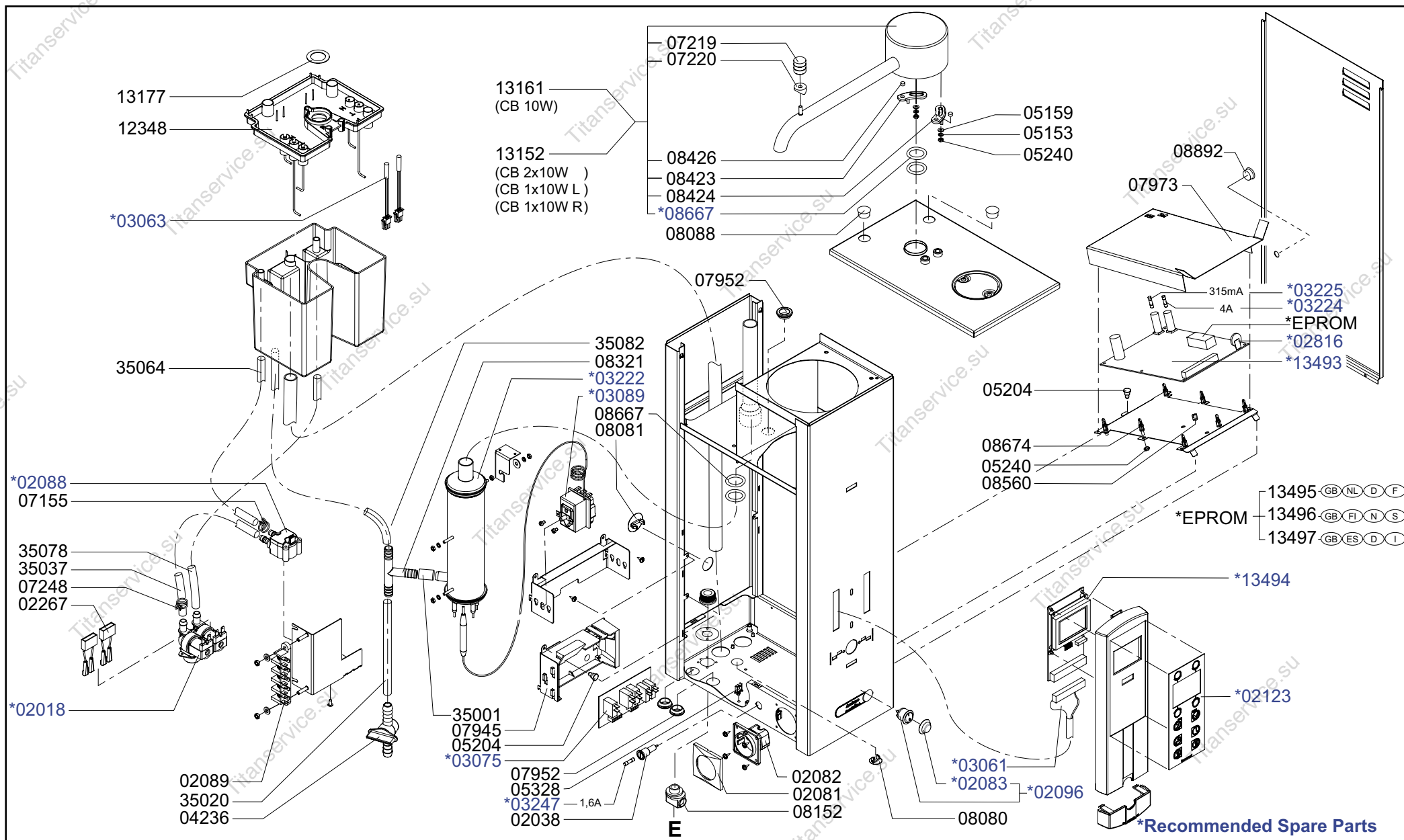
Rated voltage : 3N~ 380-415V 50-60Hz 8400W

**Spare Parts Info**

\*\*\*\*\* **Animo** \*\*\*\*\*  
**Assen - Holland**



Type : CB 2x10W, CB 1x10W L/R, CB 10W	From mach.nr. : 4M23917	Page : 2-4	Drawer : A.V.
Artikel : 10655, 10660/10665, 10675	Date : 10/03	Rev. : 1	Date : 05-04-06
Rated voltage : 3N~ 380-415V 50-60Hz 8400W	<b>Spare Parts Info</b>	***** <b>Animo</b> ***** <b>Assen - Holland</b>	



Type : CB 2x10W, CB 1x10W L/R, CB 10W

Artikel : 10655, 10660/10665, 10675

Rated voltage : 3N~ 380-415V 50-60Hz 8400W

From mach.nr. : 4M23917

Date : 10/03

## Spare Parts Info

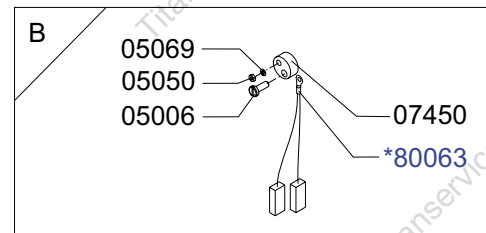
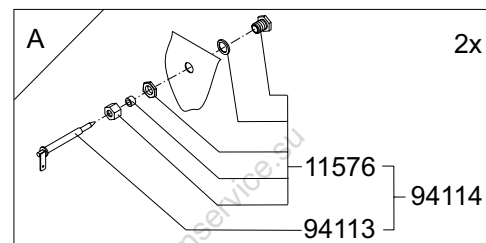
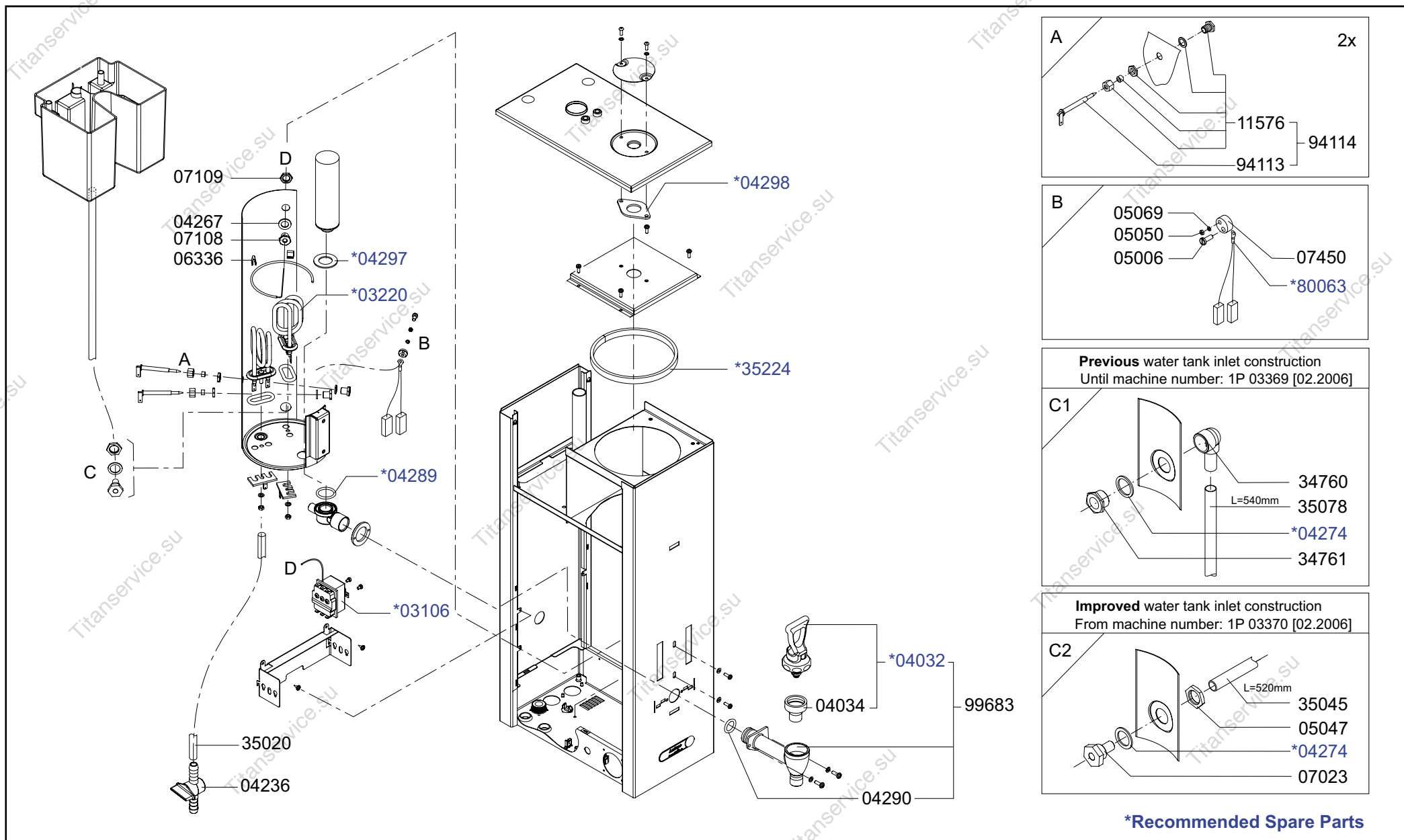
Page : 3-4

Rev. : 1

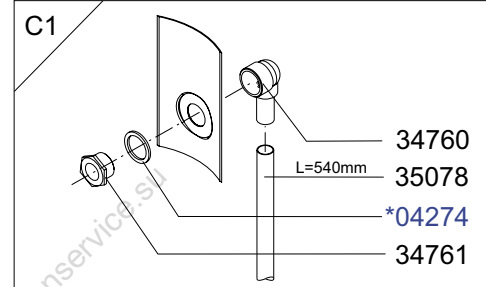
\*\*\*\*\* **Animo** \*\*\*\*\*  
Assen - Holland

Drawer : A.V.

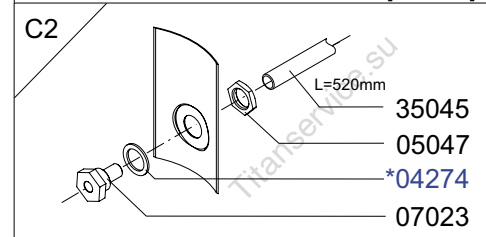
Date : 05-04-06



**Previous water tank inlet construction**  
Until machine number: 1P 03369 [02.2006]



**Improved water tank inlet construction**  
From machine number: 1P 03370 [02.2006]



**\*Recommended Spare Parts**

Type : CB 2x10W, CB 1x10W L/R, CB 10W  
Artikel : 10655, 10660/10665, 10675

From mach.nr. : 4M23917  
Date : 10/03

Page : 4-4  
Rev. : 1

Drawer : A.V.  
Date : 05-04-06

Rated voltage : 3N~ 380-415V 50-60Hz 8400W

**Spare Parts Info**

\*\*\*\*\* **Animo** \*\*\*\*\*  
**Assen - Holland**