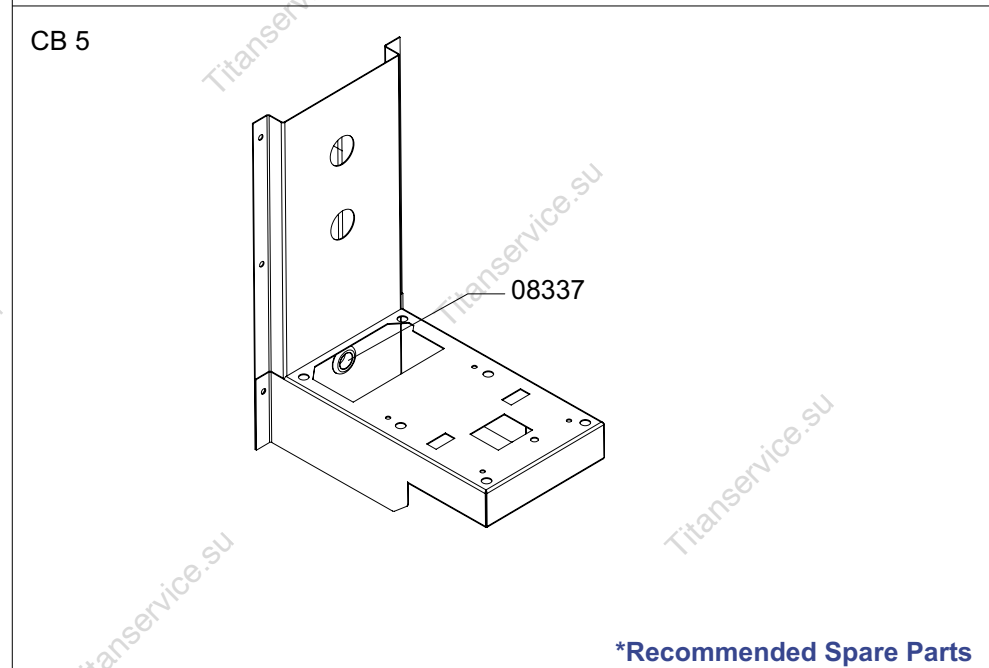
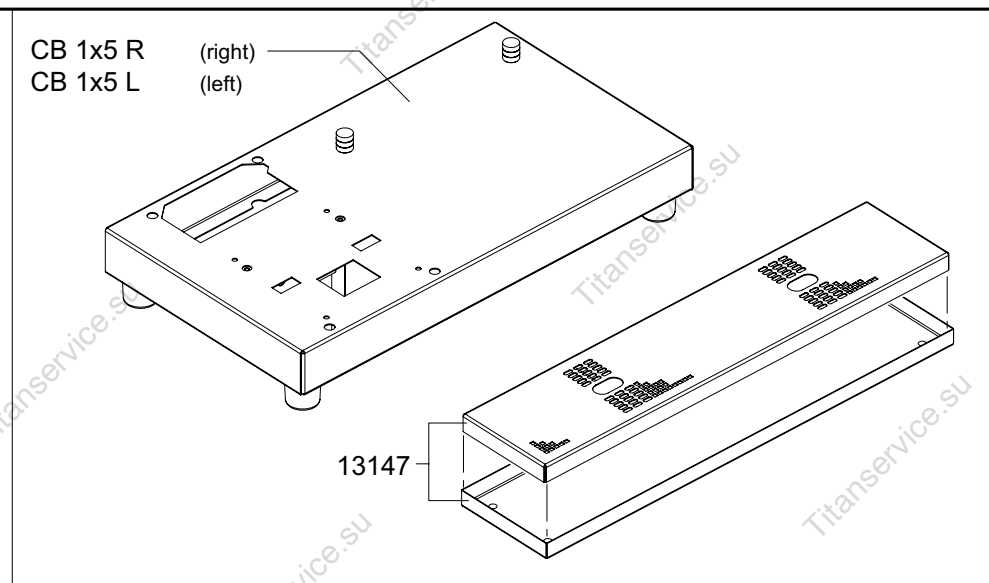
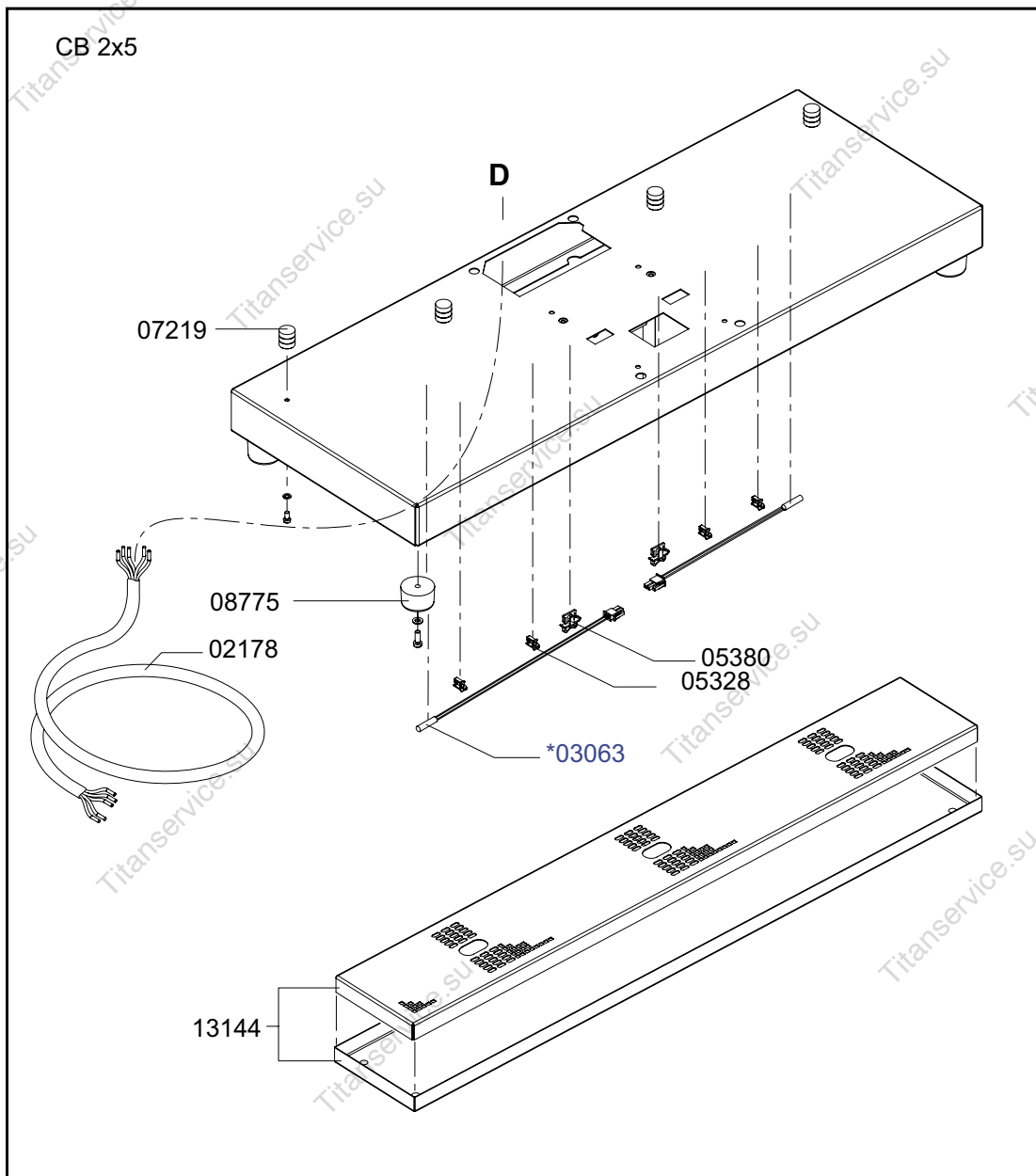
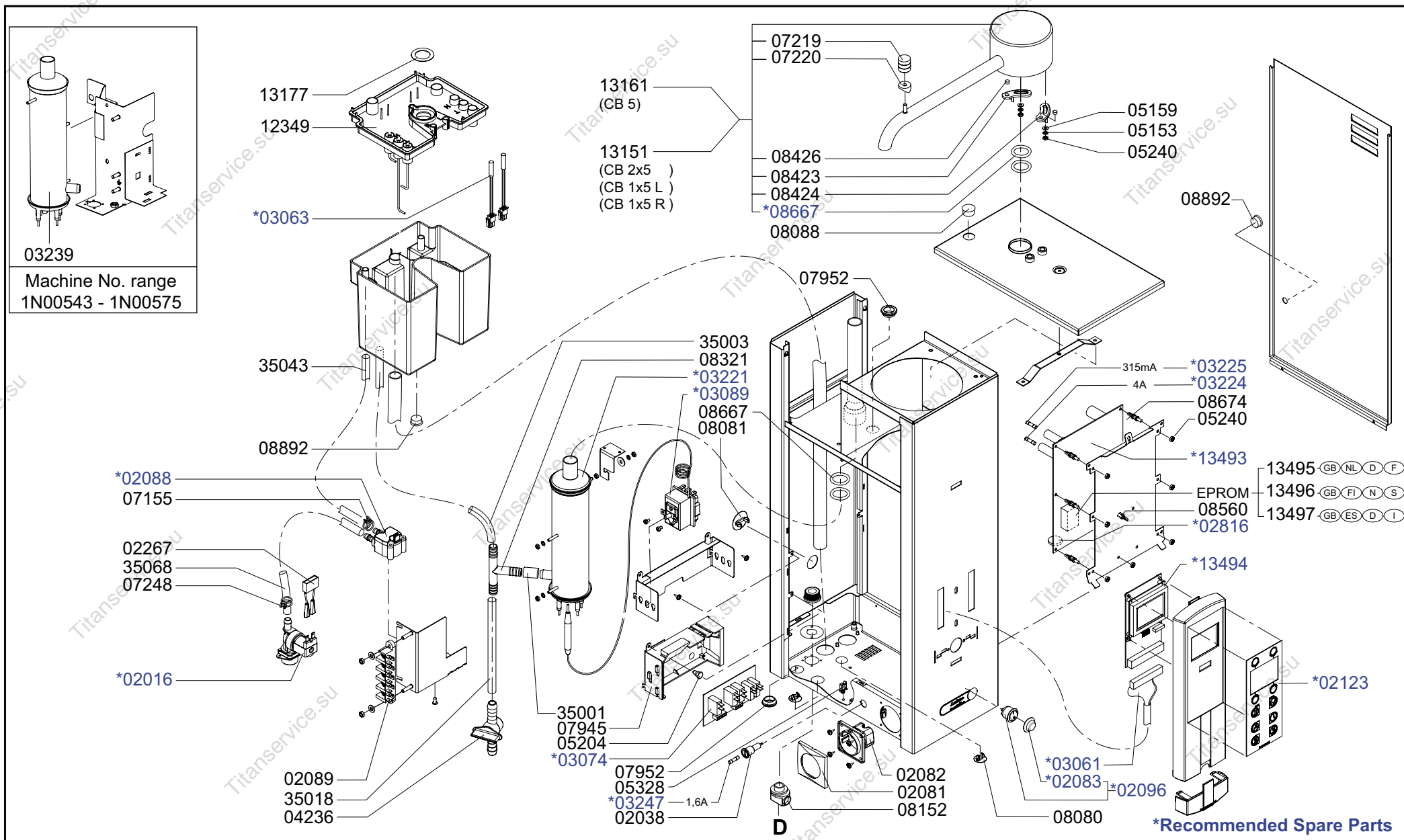


Type : CB 2x5, CB 1x5 L/R, CB 5	From mach.nr. : 4M23917	Page : 1-3	Drawer : A.V.
Artikel : 10600, 10605/10610, 10630	Date : 10/03	Rev. : 1	Date : 05-04-06
Rated voltage : 1N~ 220-240V 50-60HZ 3200W	<b>Spare Parts Info</b>	***** <b>Animo</b> ***** <b>Assen - Holland</b>	

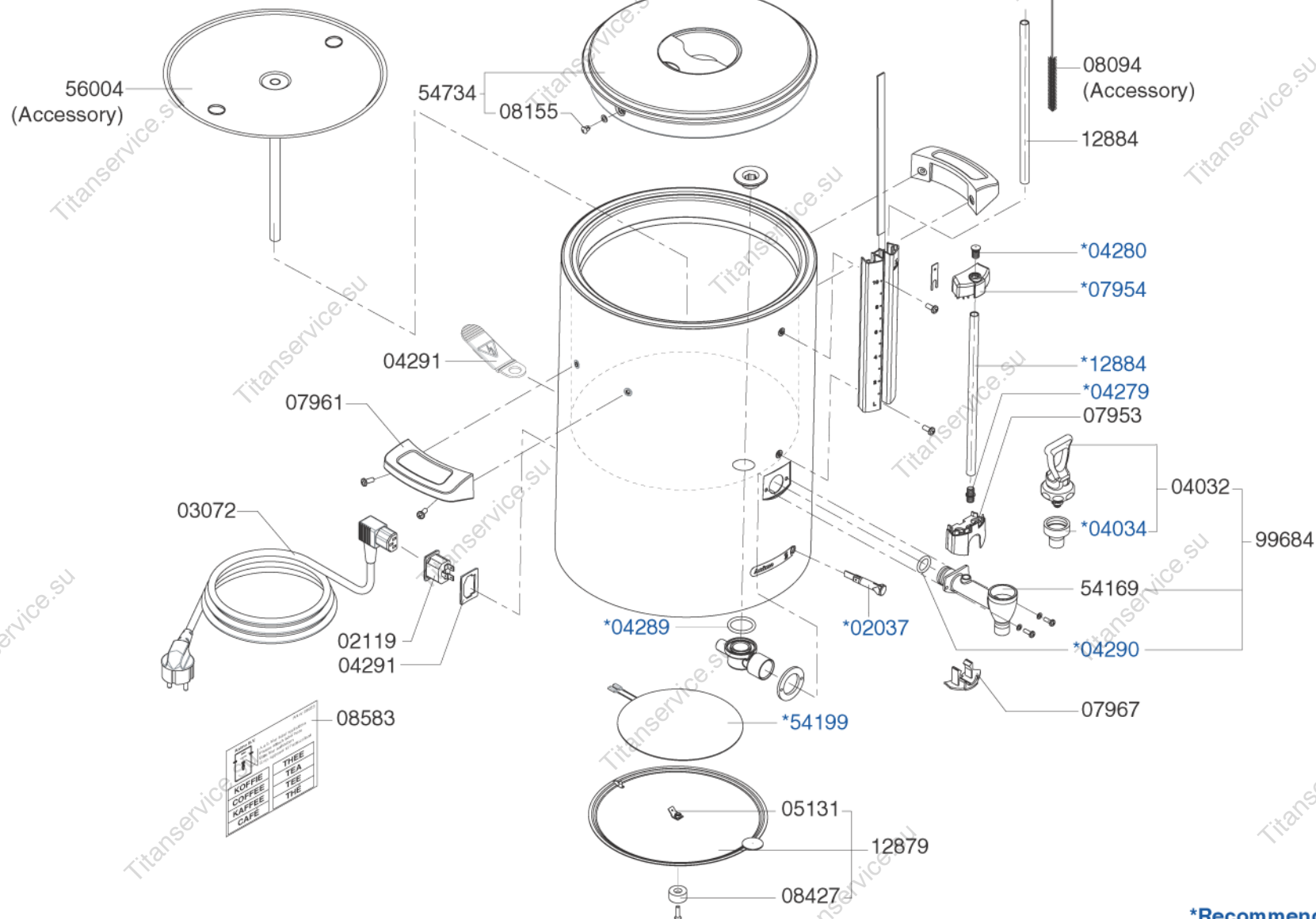


**\*Recommended Spare Parts**

Type : CB 2x5, CB 1x5 L/R, CB 5	From mach.nr. : 4M23917	Page : 2-3	Drawer : A.V.
Artikel : 10600, 10605/10610, 10630	Date : 10/03	Rev. : 1	Date : 05-04-06
Rated voltage : 1N~ 220-240V 50-60HZ 3200W	<b>Spare Parts Info</b>	***** <b>Animo</b> ***** <b>Assen - Holland</b>	

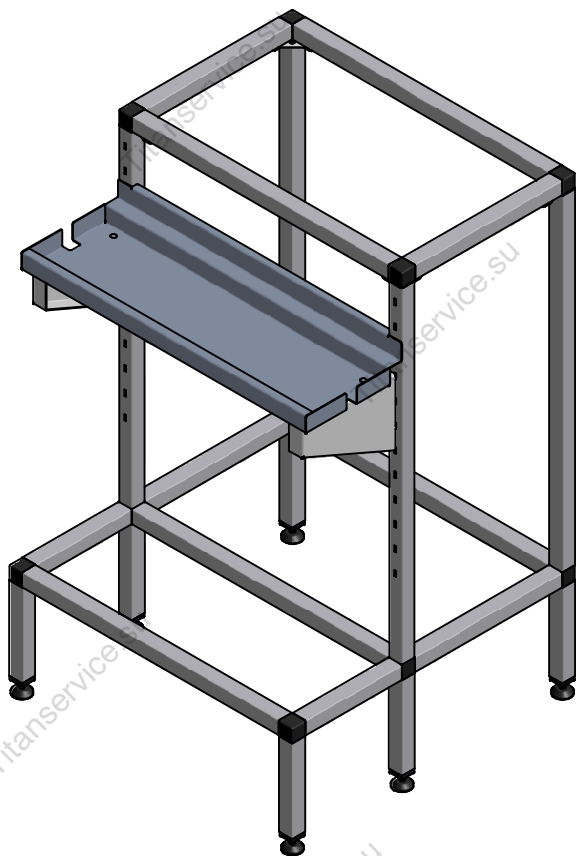


Type : CB 2x5, CB 1x5 L/R, CB 5	From mach.nr. : 4M23917	Page : 3-3	Drawer : A.V.
Artikel : 10600, 10605/10610, 10630	Date : 10/03	Rev. : 1	Date : 05-04-06
Rated voltage : 1N~ 220-240V 50-60HZ 3200W	<b>Spare Parts Info</b>	***** <b>Animo</b> ***** <b>Assen - Holland</b>	

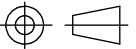
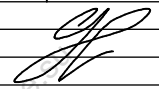


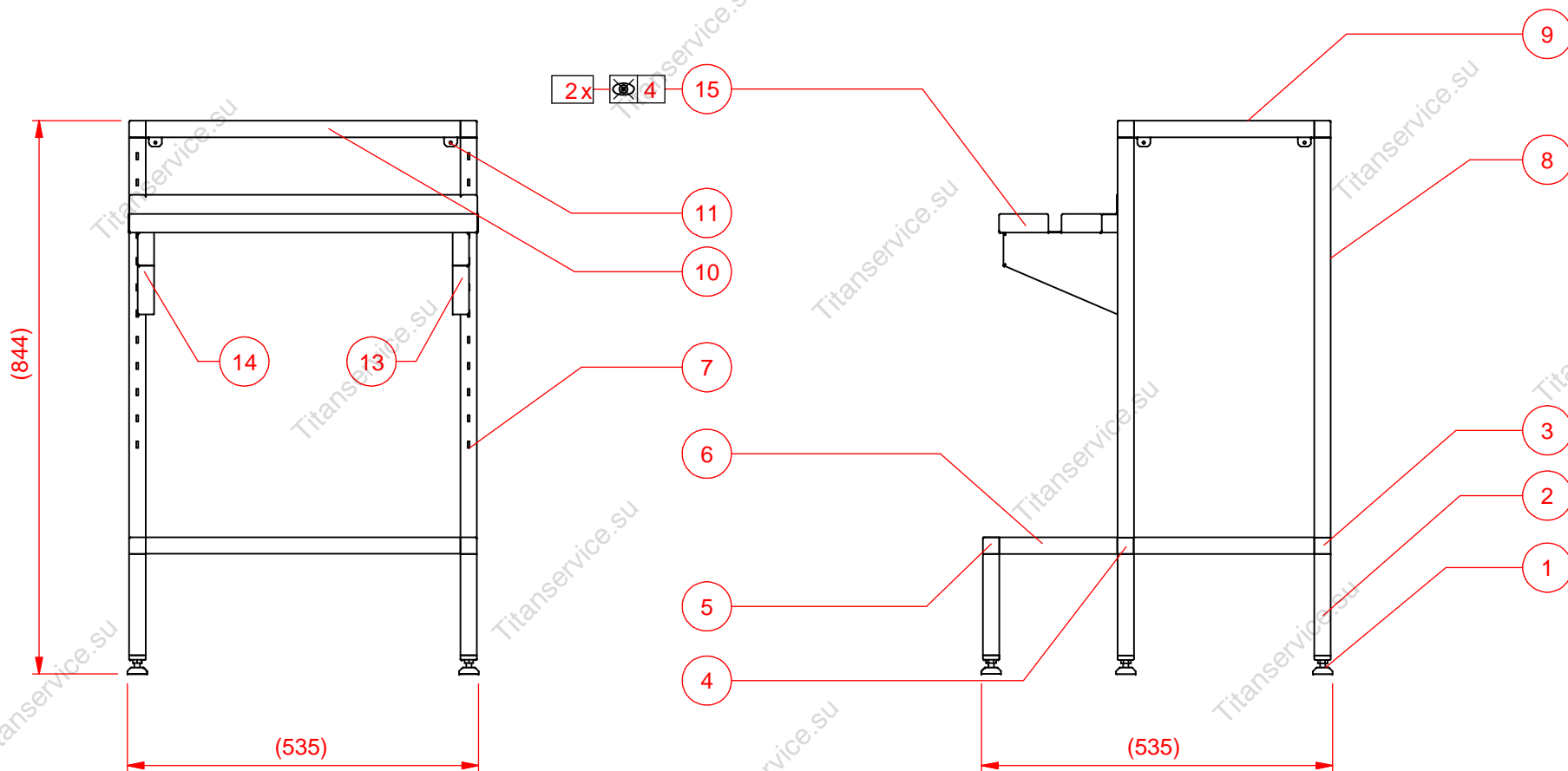
**\*Recommended Spare Parts**

Type : CN5e	From mach.nr. : 3M22227	Page : 1-1	Drawer : A.V.
Artikel : 51105	Date : 09/03	Rev. : 0	Date : 06-04-04
Rated voltage : 1N~ 220-240V 50-60Hz 35W	<b>Spare Parts Info</b>		***** <b>Animo</b> ***** <b>Assen - Holland</b>

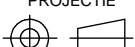


15	1	LEKBAKHOUDER ONDERST CB 1x 5		68547
14	1	LEKBAKSTEUN ONDERSTEL CB LI		68544
13	1	LEKBAKSTEUN ONDERSTEL CB RE		68543
12	4	METAALSCHROEF RVS M 5X40 CK	niet afgebeeld	05035
11	4	BEUGEL ZIJWAND ONDERSTEL CB		68546
10	5	PIJP RVS 25x25x1.2 L= 480		68536
9	4	PIJP RVS 25x25x1.2 L= 275		68534
8	2	PIJP RVS 25x25x1.2 L= 610		68386
7	2	PIJP RVS 25x25x1.2 GAT L= 610		68532
6	2	PIJP RVS 25x25x1.2 L= 180		68533
5	6	BUISVERBINDING 3W		08614
4	2	BUISVERBINDING 5W		08615
3	2	BUISVERBINDING 4W		08616
2	6	PIJP RVS 25x25x1.2 L= 155		68380
1	6	STELVOETJES M8 COMBI-TUBE		08617

STUK-NR	AAN-TAL	BENAMING OF MATERIAAL	AFMETINGEN OF OPMERKINGEN	ARTIKELNUMMER
<div style="display: flex; justify-content: space-between;"> <div> <p><b>ANIMO</b></p> </div> <div> <p>SYMBOLLEN VOLGENS ANIMO-NORM-02 IK-4.11</p> <p>PROJECTIE</p>  </div> <div> <p>MAATTOLERANTIES VOLGENS ANIMO-NORM-01 IK-4.8</p> <p>SCHAAL: 1:10</p> <p>MAATEENHEID: mm</p> <p>DATUM: 12-4-2004</p> </div> <div> <p>GETEKEND: W.B</p> <p>GECONTROLEERD:</p>  </div> <div> <p>REV. 01 31-08-04</p> <p>STUKLIJST GEWIJZIGD</p> </div> </div>				
<p>ONDERSTEL RVS CB 1x 5 (W) R/L</p>				<p>BLAD 1 van 2</p> <p><b>T10730</b></p>
				<p><b>A4</b></p>



Animo

STUK-NR	AANTAL	BENAMING OF MATERIAAL		AFMETINGEN OF OPMERKINGEN	ARTIKELNUMMER
SYMBOLLEN VOLGENS ANIMO-NORM-02 IK-4.11		MAATTOLERANTIES VOLGENS ANIMO-NORM-01 IK-4.8			
		SCHAAL: 1:10		GETEKEND: W.B.	
		MAATEENHEID: mm		GECONTROLEERD:	
		DATUM: 12-4-2004			
ONDERSTEL RVS CB 1x 5 (W) R/L				REV. 01 31-08-04	
				STUKLIJST GEWIJZIGD	
				BLAD 2 van 2	
				T10730	
				A4	

ONDERSTEL RVS CB 1x 5 (W) R/L