

Type : CB 2x20W, CB 1x20W L/R, CB 20W  
 Artikel : 10695, 10700/10705, 10715

From mach.nr. : 4M23917  
 Date : 10/03

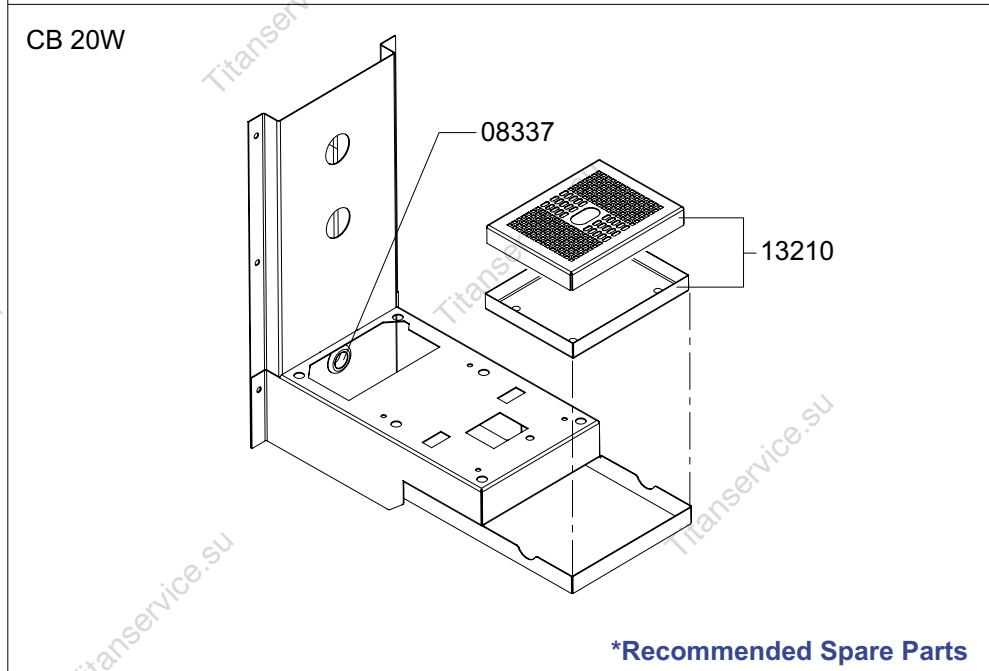
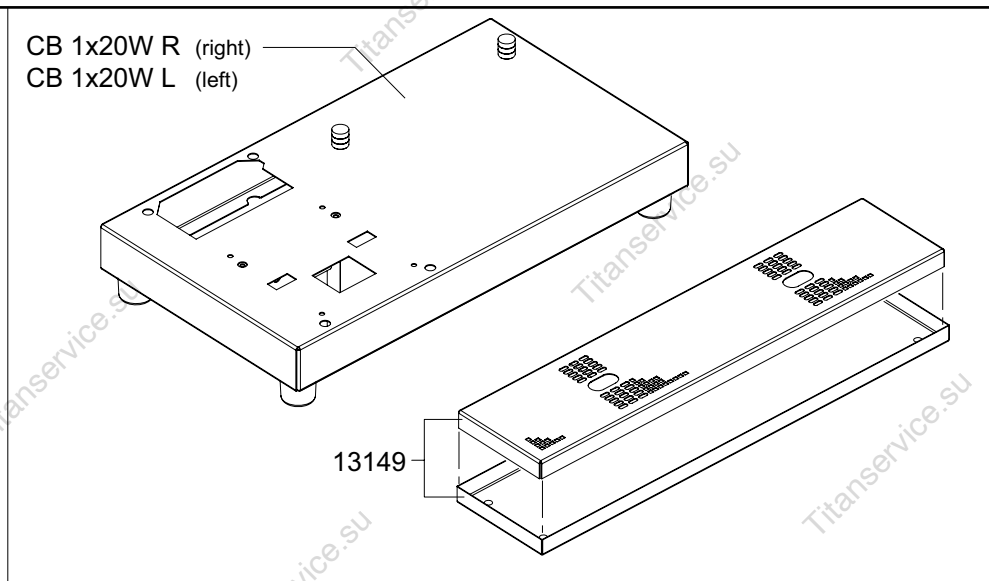
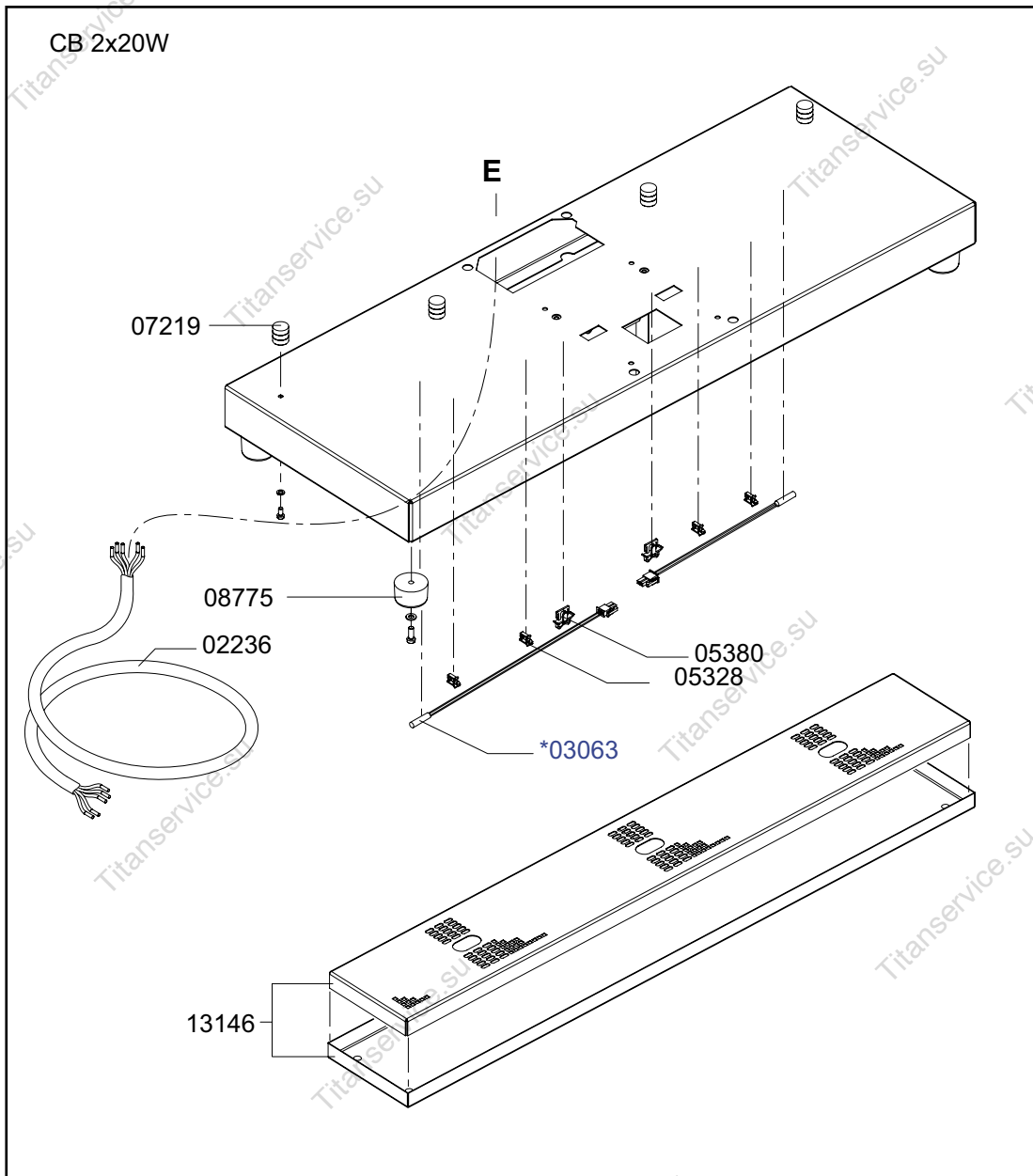
Page : 1-4  
 Rev. : 1

Drawer : A.V.  
 Date : 05-04-06

Rated voltage : 3N~ 380-415V 50-60Hz 11400W

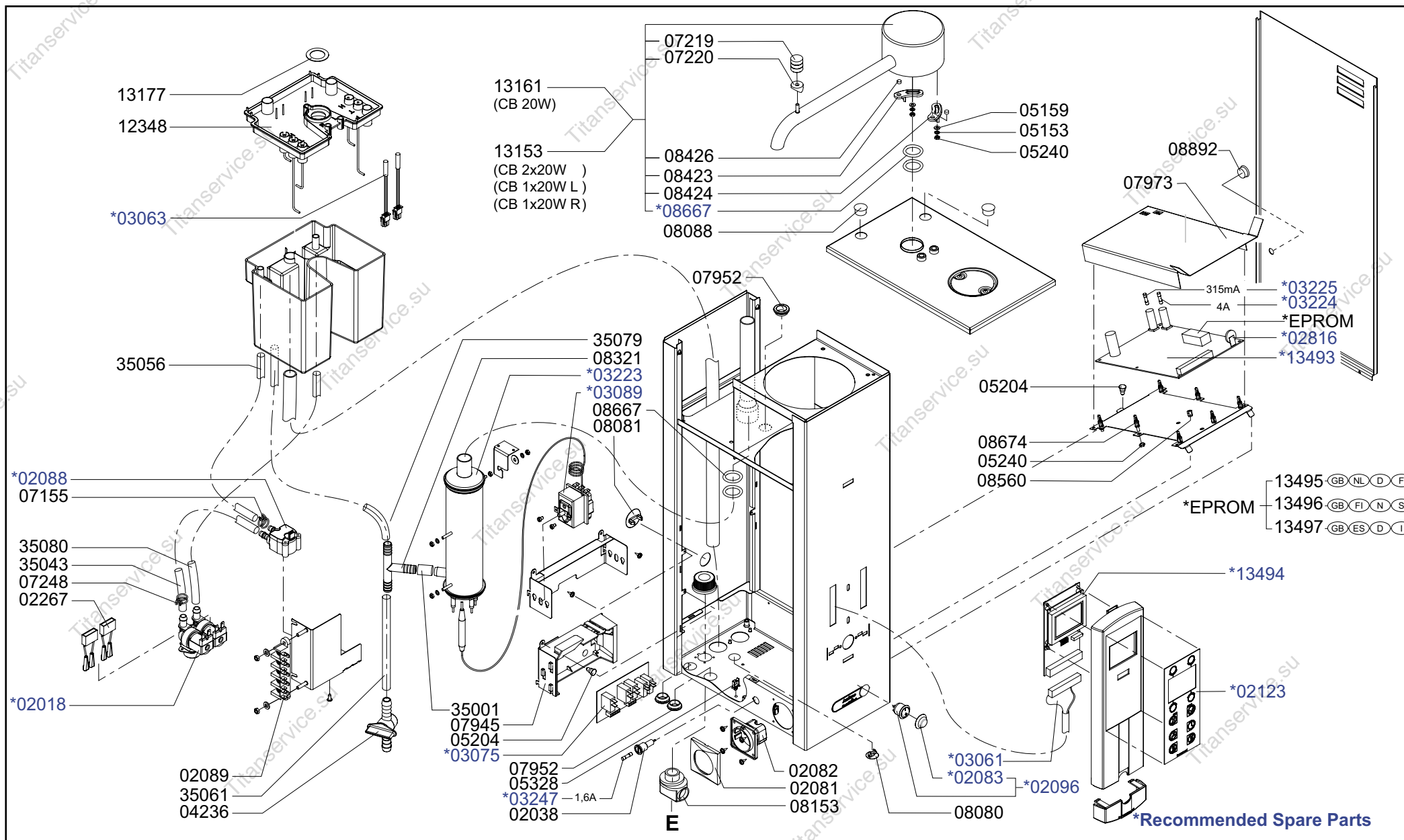
**Spare Parts Info**

\*\*\*\*\* **Animo** \*\*\*\*\*  
**Assen - Holland**

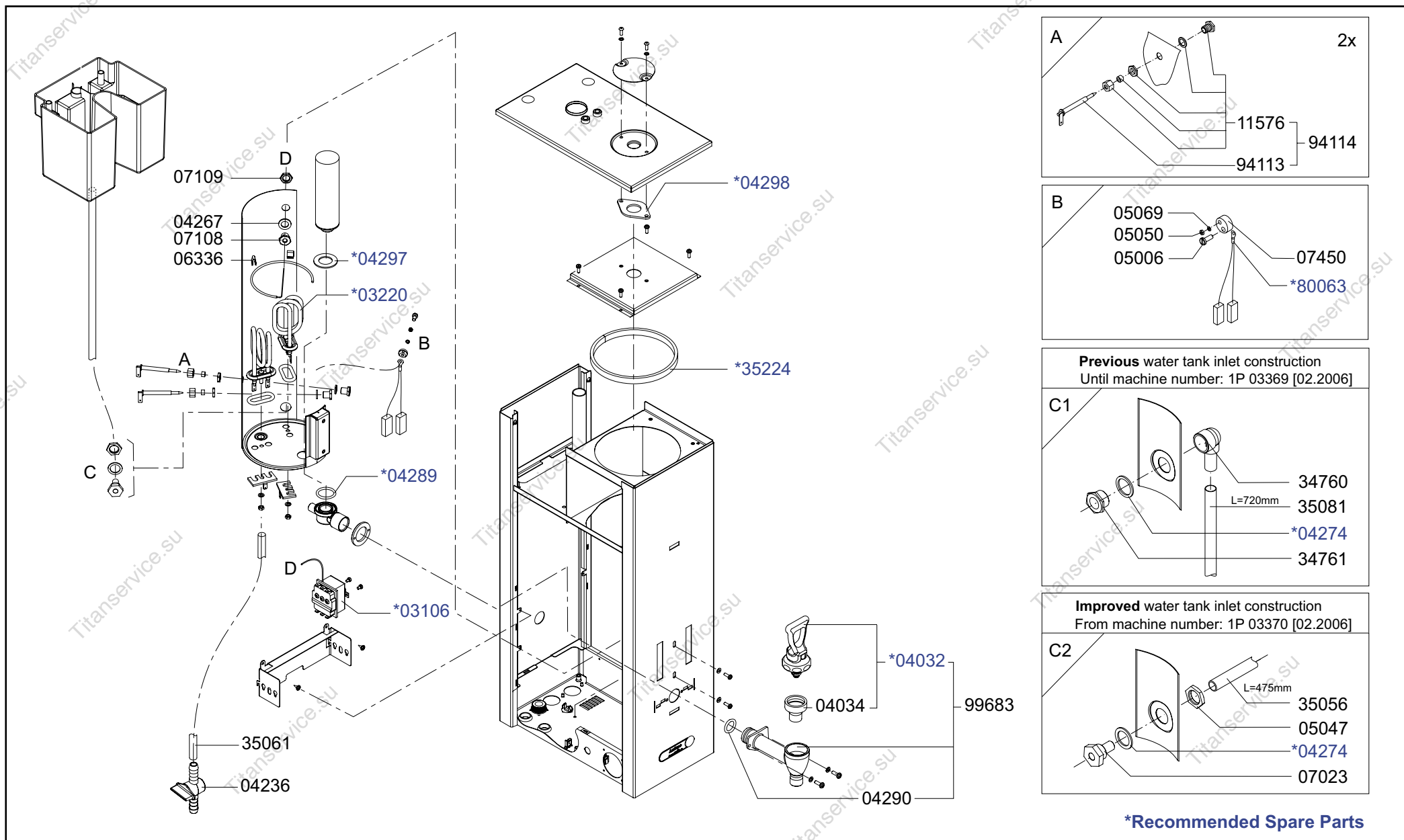


**\*Recommended Spare Parts**

Type : CB 2x20W, CB 1x20W L/R, CB 20W	From mach.nr. : 4M23917	Page : 2-4	Drawer : A.V.
Artikel : 10695, 10700/10665, 10715	Date : 10/03	Rev. : 1	Date : 05-04-06
Rated voltage : 3N~ 380-415V 50-60Hz 11400W	<b>Spare Parts Info</b>	***** <b>Animo</b> ***** <b>Assen - Holland</b>	



Type : CB 2x20W, CB 1x20W L/R, CB 20W	From mach.nr. : 4M23917	Page : 3-4	Drawer : A.V.
Artikel : 10695, 10700/10665, 10715	Date : 10/03	Rev. : 1	Date : 05-04-06
Rated voltage : 3N~ 380-415V 50-60Hz 11400W	<b>Spare Parts Info</b>	***** <b>Animo</b> ***** <b>Assen - Holland</b>	



Type : CB 2x20W, CB 1x20W L/R, CB 20W  
 Artikel : 10695, 10700/10665, 10715

From mach.nr. : 4M23917  
 Date : 10/03

Page : 4-4  
 Rev. : 1

Drawer : A.V.  
 Date : 05-04-06

Rated voltage : 3N~ 380-415V 50-60Hz 11400W

**Spare Parts Info**

\*\*\*\*\* **Animo** \*\*\*\*\*  
**Assen - Holland**

56010  
(Accessory)

54725

08155

08094  
(Accessory)

12886

04291

07963

03072

02119  
04291

08583

\*04289

\*02037

\*04280

\*07954

\*12886

\*04279

07953

04032

\*04034

99684

54169

\*04290

07967

\*54203

05131

12882

08427

**\*Recommended Spare Parts**

Type : CN20e

Artikel : 51120

From mach.nr. : 3M22227

Date : 09/03

Page : 1-1

Rev. : 0

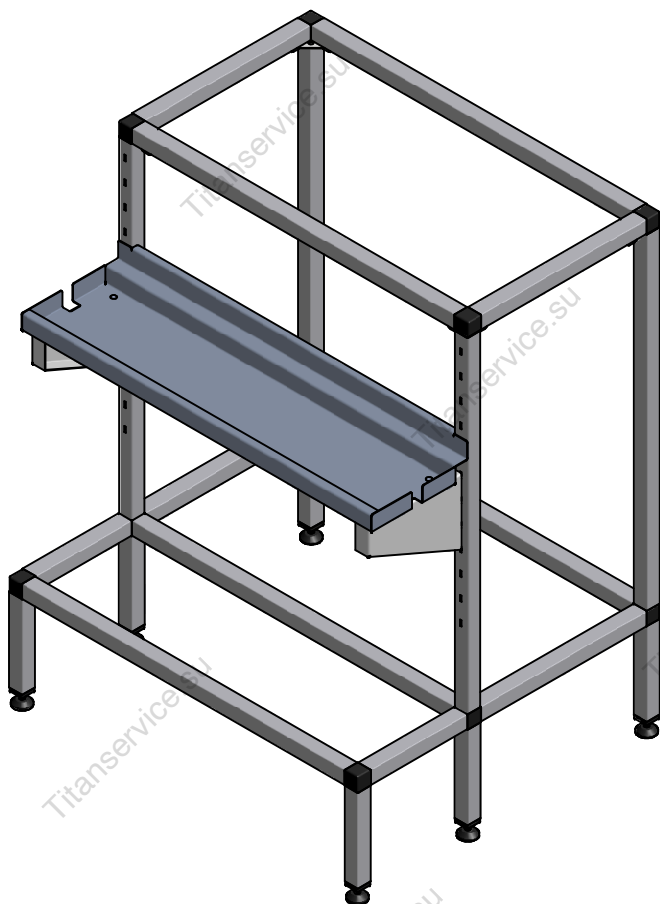
Drawer : A.V.

Date : 06-04-04

Rated voltage : 1N~ 220-240V 50-60Hz 70W

**Spare Parts Info**

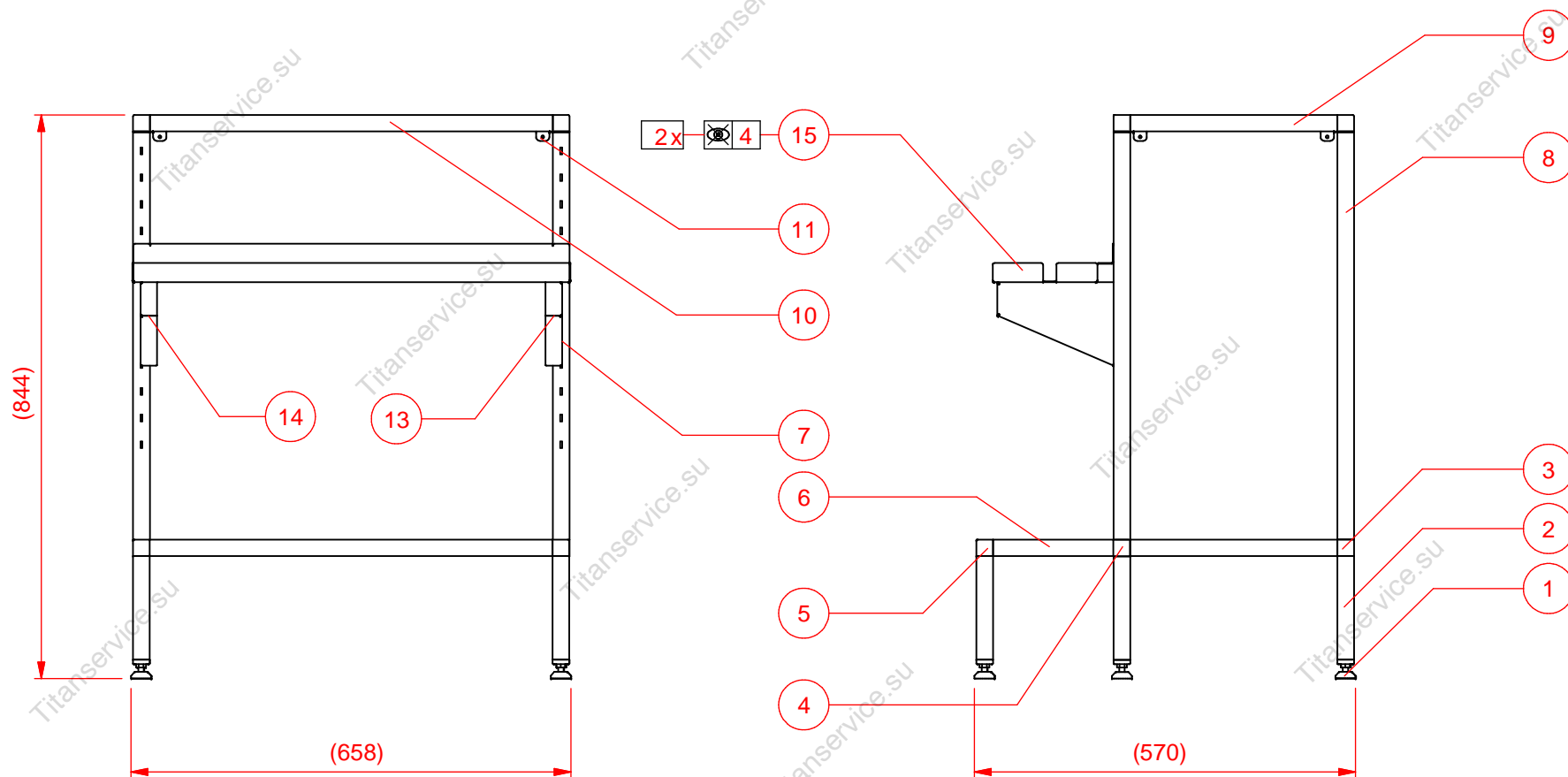
\*\*\*\*\* **Animo** \*\*\*\*\*  
**Assen - Holland**



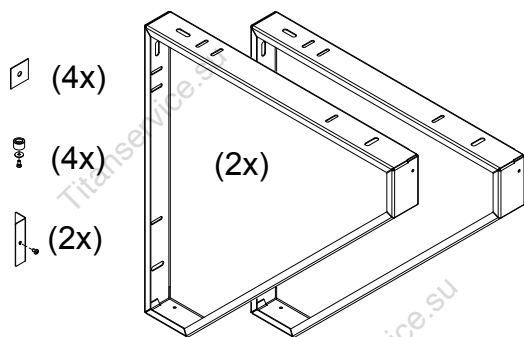
15	1	LEKBAKHOUDER ONDERST CB 1x20(W)		68549
14	1	LEKBAKSTEUN ONDERSTEL CB LI		68544
13	1	LEKBAKSTEUN ONDERSTEL CB RE		68543
12	4	METAALSCHROEF RVS M5x40 CK	niet afgebeeld	05035
11	4	BEUGEL ZIJWAND ONDERSTEL CB		68546
10	5	PIJP RVS 25x25x1.2 L= 603		68538
9	4	PIJP RVS 25x25x1.2 L= 310		68535
8	2	PIJP RVS 25x25x1.2 L= 610		68386
7	2	PIJP RVS 25x25x1.2 GAT L= 610		68532
6	2	PIJP RVS 25x25x1.2 L= 180		68533
5	6	BUISVERBINDING 3W		08614
4	2	BUISVERBINDING 5W		08615
3	2	BUISVERBINDING 4W		08616
2	6	PIJP RVS 25x25x1.2 L= 155		68380
1	6	STELVOETJES M8 COMBI-TUBE		08617

STUK-NR	AAN-TAL	BENAMING OF MATERIAAL	AFMETINGEN OF OPMERKINGEN	ARTIKELNUMMER
<div> <div> SYMBOLLEN VOLGENS ANIMO-NORM-02 IK-4.11 </div> <div> MAATTOLERANTIES VOLGENS ANIMO-NORM-01 IK-4.8 </div> <div> REV. 01 31-08-04 STUKLIJST Aangepast </div> </div>				
<div> <div>PROJECTIE</div> <div> </div> </div>		<div> SCHAAL: 1:10  MAATEENHEID: mm  DATUM: 13-4-2004 </div>	<div> GETEKEND: W.B  GECONTROLEERD:  </div>	<div> BLAD 1 van 2  T10732 </div>
<div> <div>Animo</div> <div>ONDERSTEL RVS CB 1x20 (W) R/L</div> </div>				<div> A4 </div>





STUK-NR	AAN-TAL	BENAMING OF MATERIAAL	AFMETINGEN OF OPMERKINGEN	ARTIKELNUMMER
<div> <div> SYMBOLLEN VOLGENS ANIMO-NORM-02 IK-4.11 </div> <div> MAATTOLERANTIES VOLGENS ANIMO-NORM-01 IK-4.8 </div> <div> GETEKEND: W.B </div> <div> REV. 01 31-08-04 STUKLIJST Aangepast </div> </div>				
PROJECTIE		SCHAAL: 1:10	GECONTROLEERD:	BLAD 2 van 2
		MAATEENHEID: mm		
		DATUM: 13-4-2004		
ONDERSTEL RVS CB 1x20 (W) R/L				T10732
				A4



Art.nr. 10740

CB (W)	X (mm)
1x5	475
2x5	715
1x10	544
2x10	852
1x20	598
2x20	960

Advice hight 800 - 900 mm

X (h.o.h)

20L  
5 + 10L

Min. Ø 8mm

