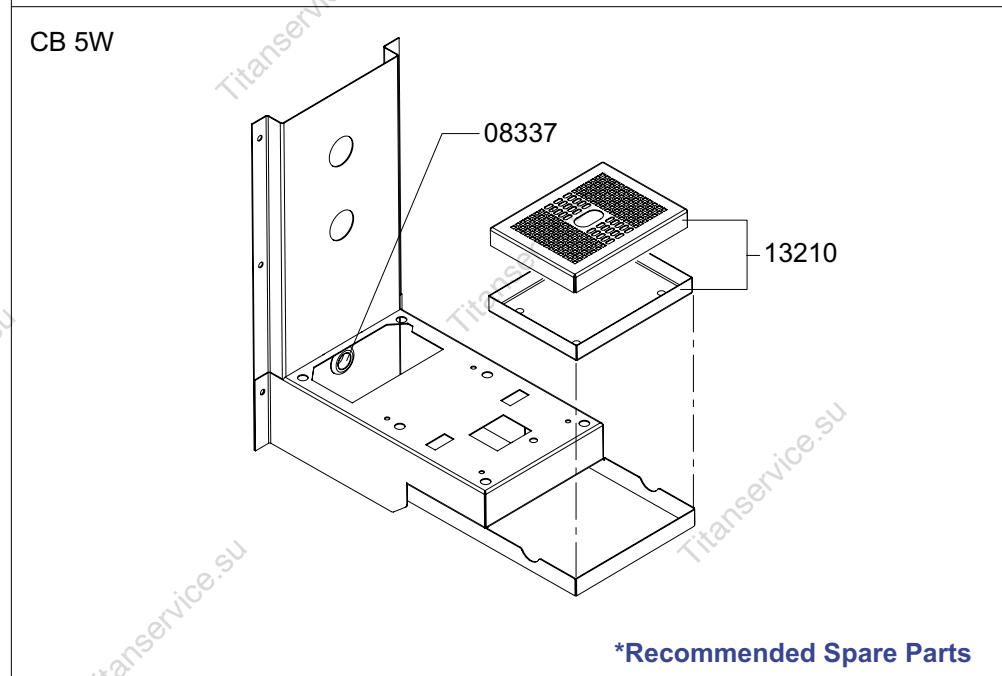
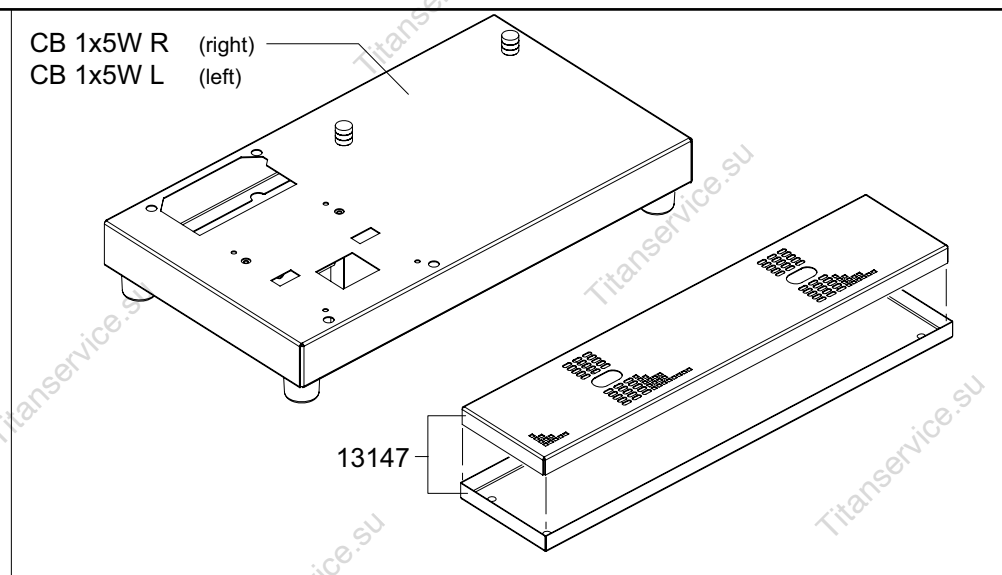
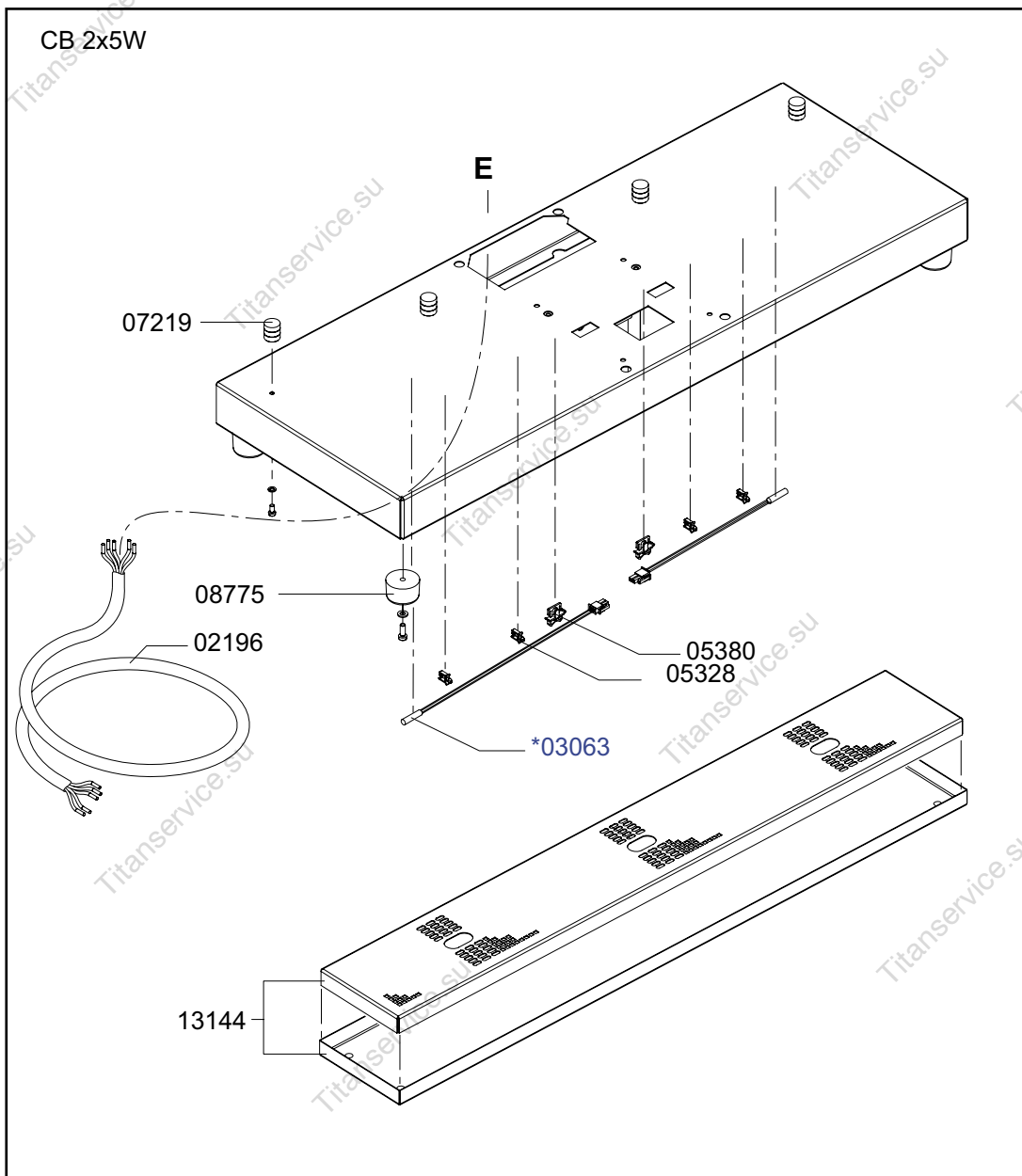


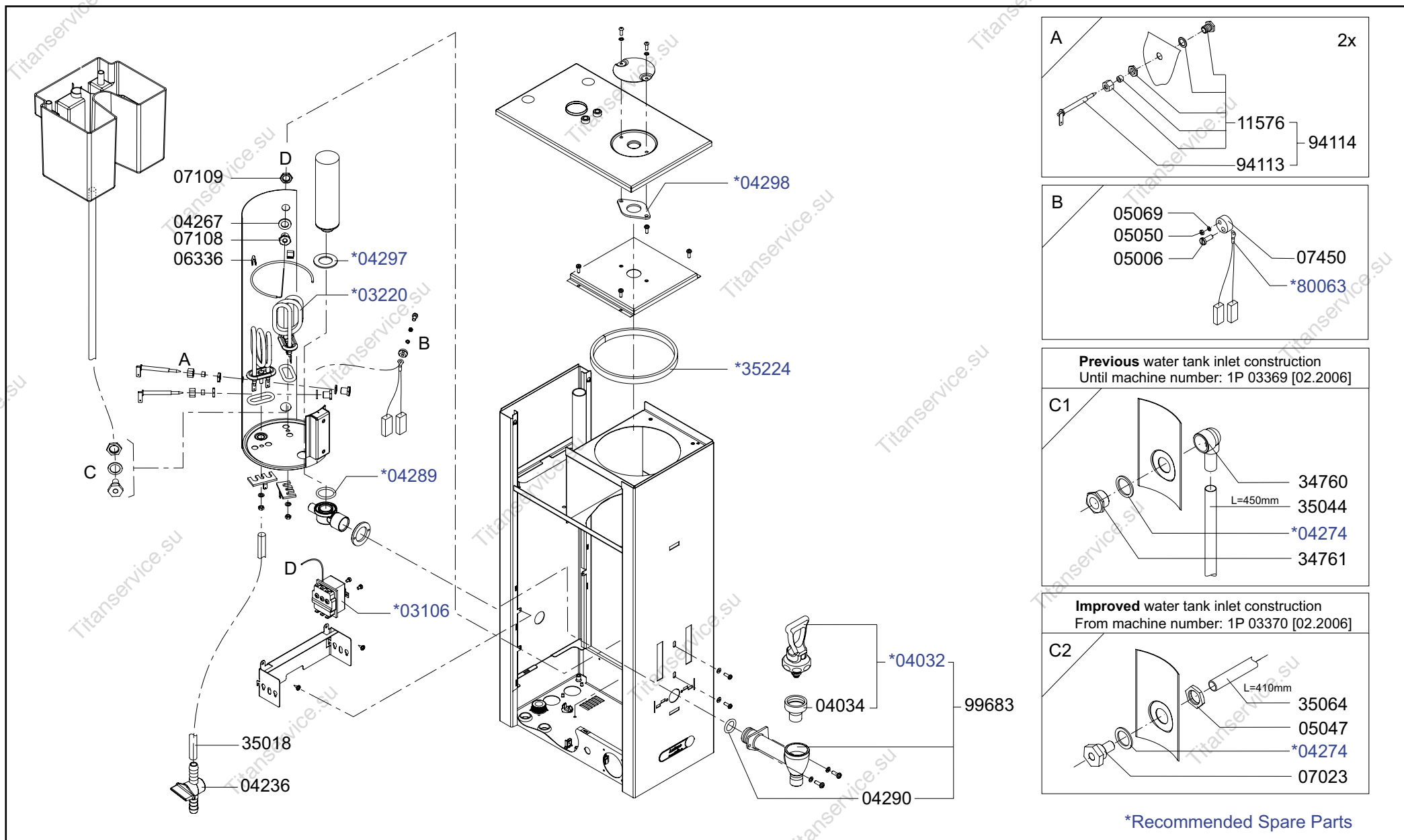
***Recommended Spare Parts**

Type : CB 2x5W, CB 1x5W L/R, CB 5W	From mach.nr. : 4M23917	Page : 1-4	Drawer : A.V.
Artikel : 10615, 10620/10625, 10635	Date : 10/03	Rev. : 1	Date : 05-04-06
Rated voltage : 3N~ 380-415V 50-60Hz 5400W	Spare Parts Info	***** Animo ***** Assen - Holland	



***Recommended Spare Parts**

Type : CB 2x5W, CB 1x5W L/R, CB 5W	From mach.nr. : 4M23917	Page : 2-4	Drawer : A.V.
Artikel : 10615, 10620/10625, 10635	Date : 10/03	Rev. : 1	Date : 05-04-06
Rated voltage : 3N~ 380-415V 50-60Hz 5400W	Spare Parts Info	***** Animo ***** Assen - Holland	



Type : CB 2x5W, CB 1x5W L/R, CB 5W
 Artikel : 10615, 10620/10625, 10635

From mach.nr. : 4M23917
 Date : 10/03

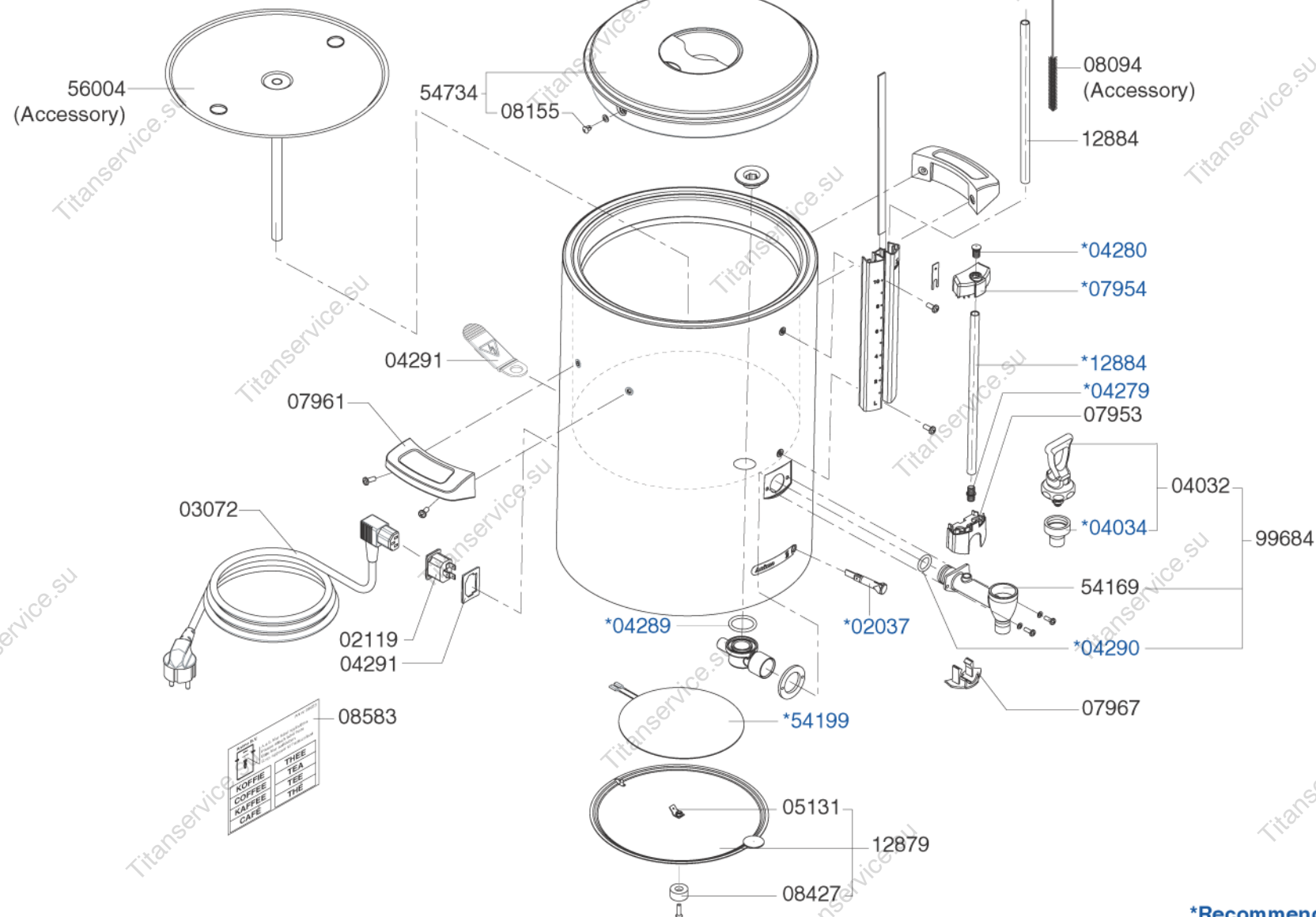
Page : 4-4
 Rev. : 1

Drawer : A.V.
 Date : 05-04-06

Rated voltage : 3N~ 380-415V 50-60Hz 5400W

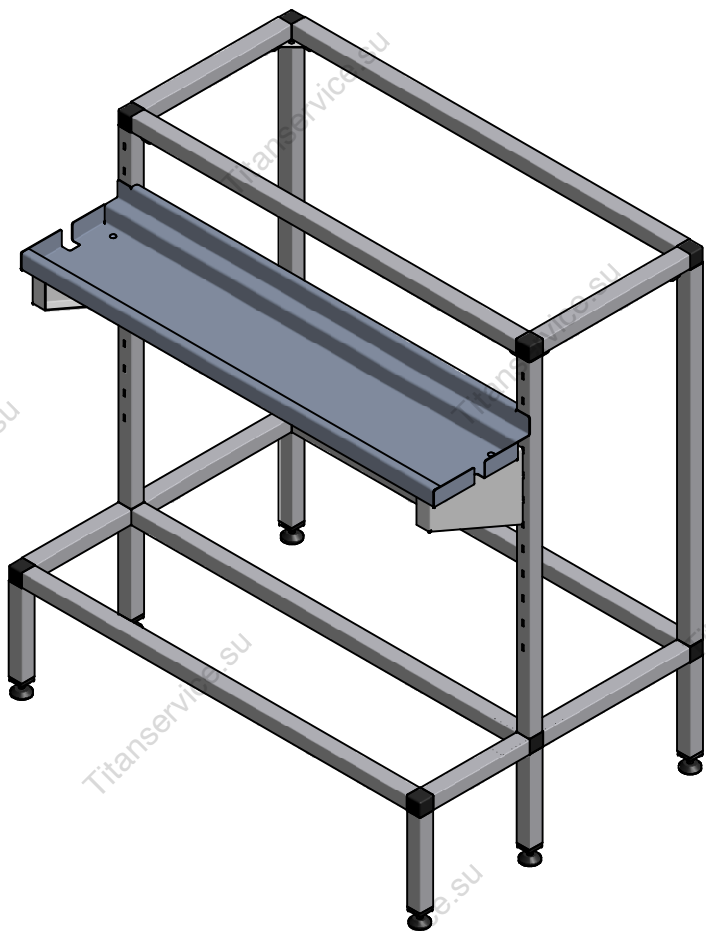
Spare Parts Info

***** **Animo** *****
Assen - Holland



***Recommended Spare Parts**

Type : CN5e	From mach.nr. : 3M22227	Page : 1-1	Drawer : A.V.
Artikel : 51105	Date : 09/03	Rev. : 0	Date : 06-04-04
Rated voltage : 1N~ 220-240V 50-60Hz 35W	Spare Parts Info		***** Animo ***** Assen - Holland

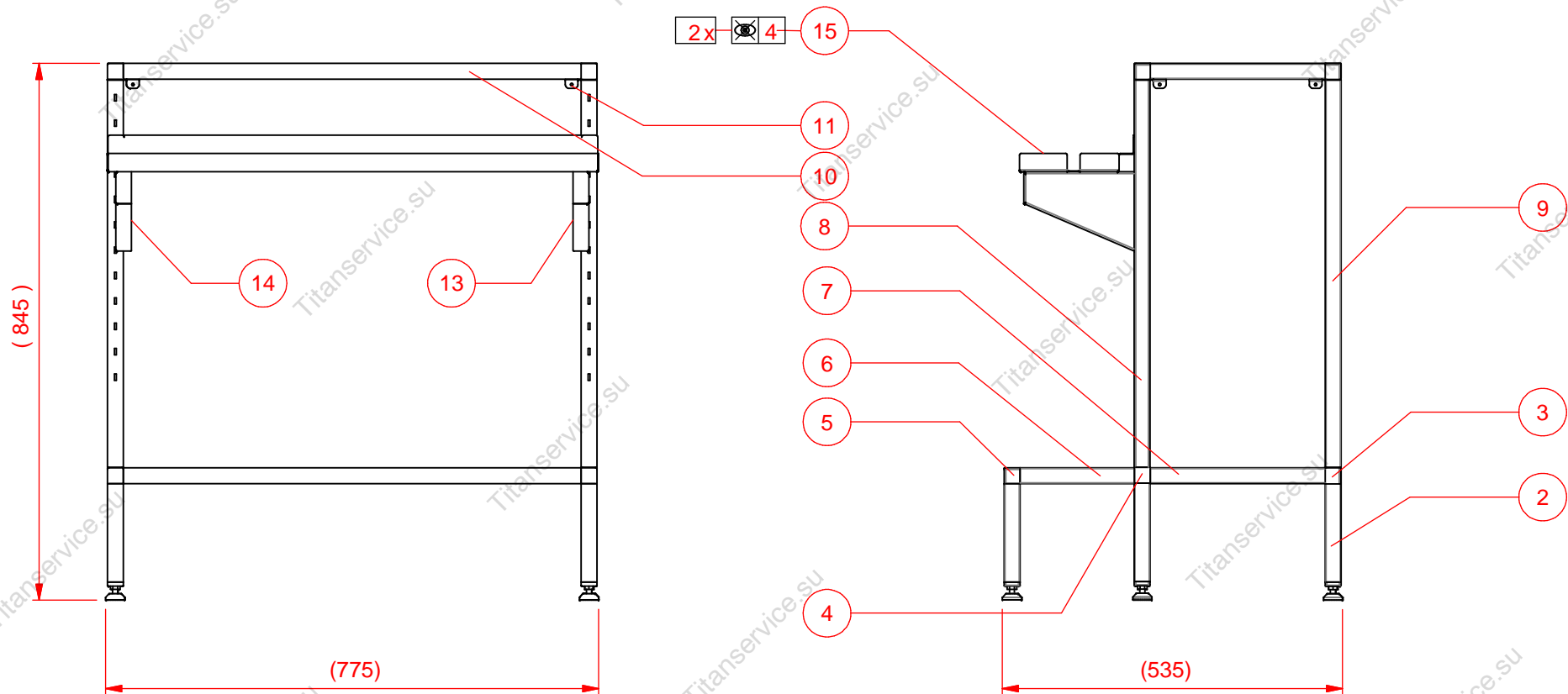


15	1	LEKBAKHOUDER ONDERSTELCB 2x5(W)		68550
14	1	LEKBAKSTEUN ONDERSTEL CB LI		68544
13	1	LEKBAKSTEUN ONDERSTEL CB RE		68543
12	4	METAALBOUT RVS M5x40	niet afgebeeld	05035
11	4	BEUGEL ZIJWAND ONDERSTEL CB		68546
10	5	PIJP RVS 25x25x1.2 L= 720		68539
9	2	PIJP RVS 25x25x1.2 L= 610		68386
8	2	PIJP RVS 25x25x1.2 GAT L= 610		68532
7	4	PIJP RVS 25x25x1.2 L= 275		68534
6	2	PIJP RVS 25x25x1.2 L= 180		68533
5	6	BUISVERBINDING 3W		08614
4	2	BUISVERBINDING 5W		08615
3	2	BUISVERBINDING 4W		08616
2	6	PIJP RVS 25x25x1.2 L= 155		68380
1	6	STELVOETJES M8 COMBI-TUBE		08617

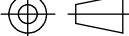

STUK-NR	AAN-TAL	BENAMING OF MATERIAAL	AFMETINGEN OF OPMERKINGEN	ARTIKELNUMMER
<div> <div> SYMBOLLEN VOLGENS ANIMO-NORM-02 IK-4.11 </div> <div> MAATTOLERANTIES VOLGENS ANIMO-NORM-01 IK-4.8 </div> <div> REV. 01 30-08-04 STUKLIJST Aangepast </div> </div>				
<div> <div>PROJECTIE</div> <div> </div> </div>		<div> <div>SCHAAL: 1:10</div> <div>MAATEENHEID: mm</div> <div>DATUM: 12-3-2004</div> </div>		<div> <div>GETEKEND: W.B</div> <div>GECONTROLEERD:</div> </div>
<div> <div>ONDERSTEL RVS CB 2x 5 (W)</div> </div>				<div> <div>BLAD 1 van 2</div> <div>T10733</div> </div>

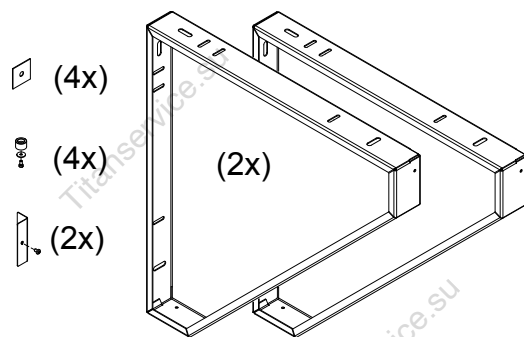
Animo

A4



Animo

STUK-NR	AAN-TAL	BENAMING OF MATERIAAL			AFMETINGEN OF OPMERKINGEN		ARTIKELNUMMER
SYMBOLEN VOLGENS ANIMO-NORM-02 IK-4.11		MAATTOLERANTIES VOLGENS ANIMO-NORM-01 IK-4.8				REV. 01 30-08-04 STUKLIJST Aangepast	
<div>PROJECTIE</div> <div></div>		SCHAAL: 1:10	GETEKEND: W.B.				
		MAATEENHEID: mm	GECONTROLEERD: 				
		DATUM: 12-3-2004					
ONDERSTEL RVS CB 2x 5 (W)						BLAD 2 van 2	
						T10733	
						A4	



Art.nr. 10740

CB (W)	X (mm)
1x5	475
2x5	715
1x10	544
2x10	852
1x20	598
2x20	960

Advice hight 800 - 900 mm

X (h.o.h)

20L
5 + 10L

Min. Ø 8mm

