



MUSTER 1500

LIST OF THE EXPLODED VIEWS



SHELL ASSY

COOLING SYSTEM

EVAPORATOR

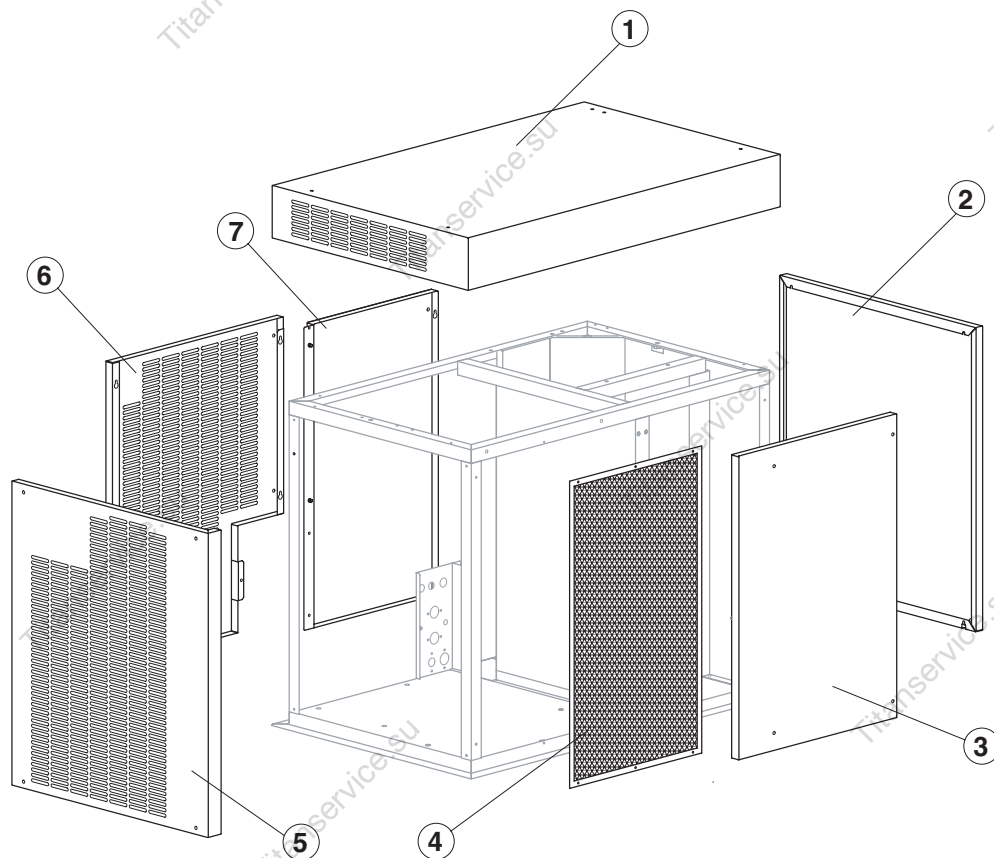
PUMP

ELECTRIC PARTS



MUSTER 1500

SHELL ASSY

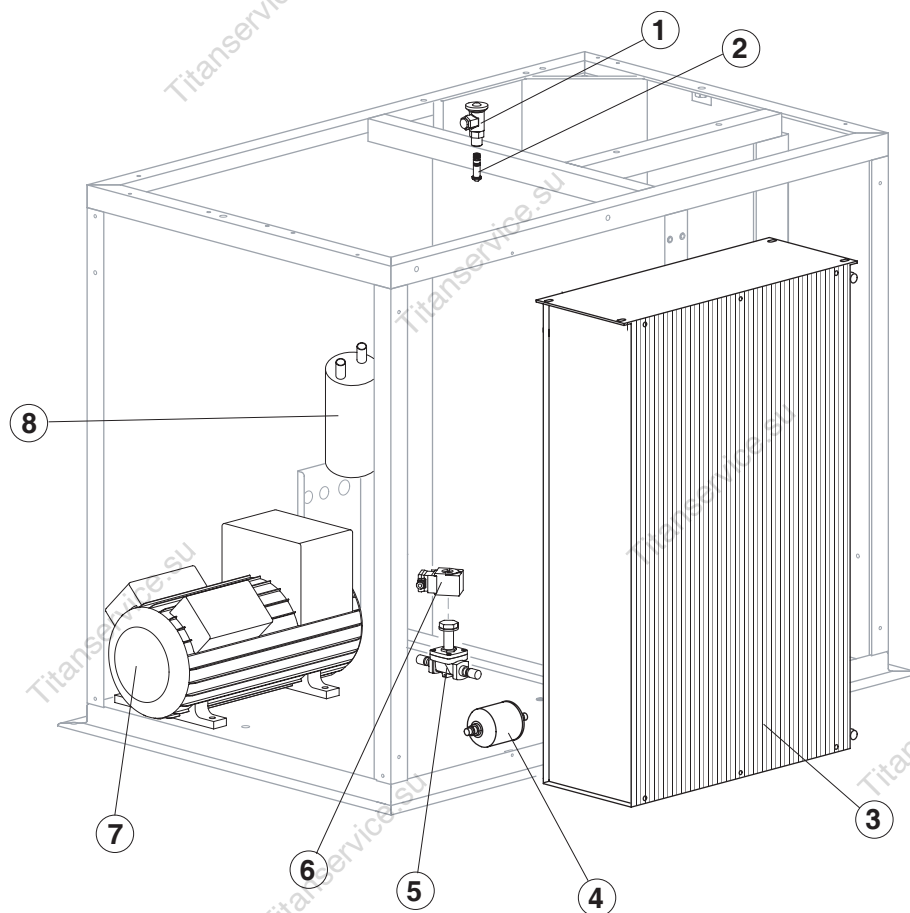


| Ref. | Spare Description | Code |
|------|------------------------------------|----------|
| 1 | Top Assembly | C22449 |
| 2 | Right Side Panel | 221051 |
| 3 | Front Panel Assy (Evaporator Side) | C221052B |
| 4 | Filter | 18192 |
| 5 | Left Side Panel | 221050 |
| 6 | Rear Panel (Group Side) | 221054 |
| 7 | Rear Panel (Evaporator Side) | 221053 |



MUSTER 1500

COOLING SYSTEM

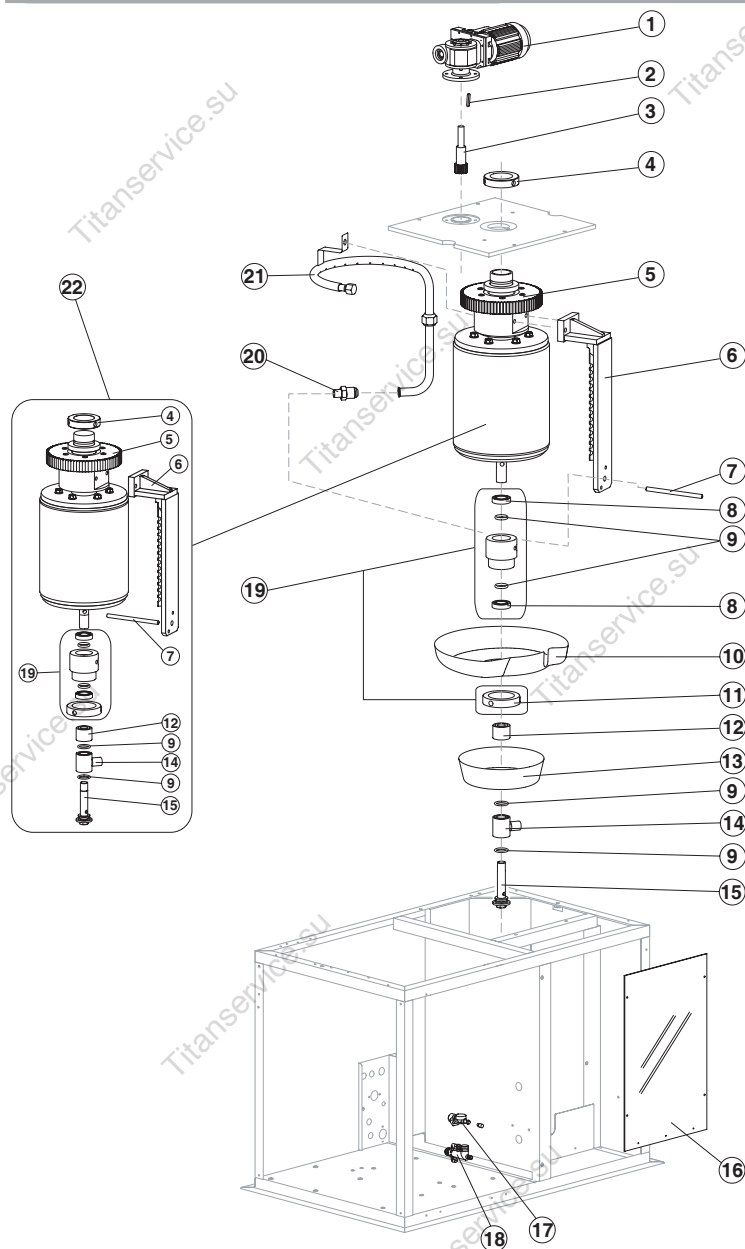


| Ref. | Spare Description | Code |
|------|--------------------|-------|
| 1 | Expansion Valve | 20826 |
| 2 | Orifice | 20833 |
| 3 | Air Condenser | 20830 |
| 4 | Solid Core drier | 14255 |
| 5 | Hot Gas Valve Body | 20409 |
| 6 | Hot Gas Valve Coil | 23091 |
| 7 | Compressor | 23863 |
| 8 | Liquid Separetor | 20883 |



MUSTER 1500

EVAPORATOR

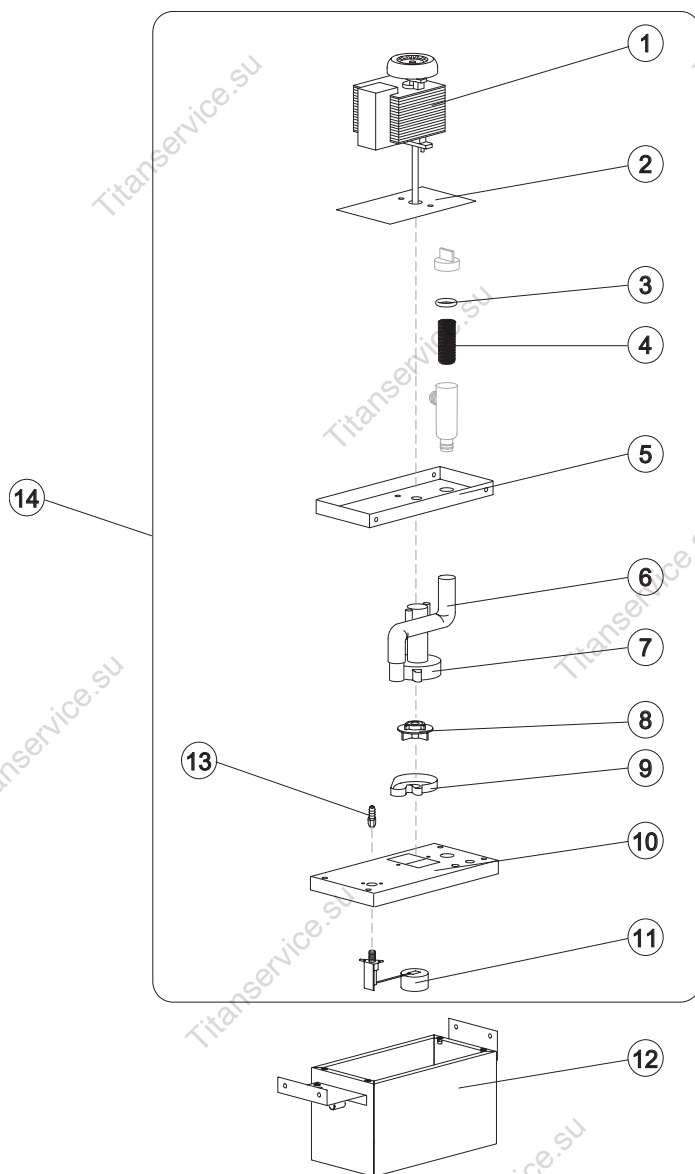


| Ref. | Spare Description | Code |
|------|---------------------------------|--------|
| 1 | Gearmotor Ass | C23412 |
| 2 | Key 6x6x40 | 20350 |
| 3 | Pinion with Shaft for Gearmotor | C20344 |
| 4 | Cylinder Locking Ring Nut | 20365 |
| 5 | Ring Gear | 20363 |
| 6 | Scraper | 20873 |
| 7 | M10 Tie Rod (to Block Scraper) | 20874 |
| 8 | Stainless Steel Upper Bearin | 20045 |
| 9 | Silicone OR 4081 Ring | 20338 |
| 10 | Rotating Basin | 10191 |
| 11 | Ring Nut for Rotating Ring | 10194 |
| 12 | Spacer | 10528 |
| 13 | Fixed Basin | C10192 |
| 14 | Water Inlet Ring | 20851 |
| 15 | Screw | 20872 |
| 16 | Evaporator Chamber Shield | 10536 |
| 17 | 1 Way- Water Inlet Nipple | 10239 |
| 18 | Discharges Manifold | C10384 |
| 19 | Complete Rotating Ring | C10193 |
| 20 | Joint | 20367 |
| 21 | Sprayer Ring | C20882 |
| 22 | Evaporator | C20877 |



MUSTER 1500

PUMP

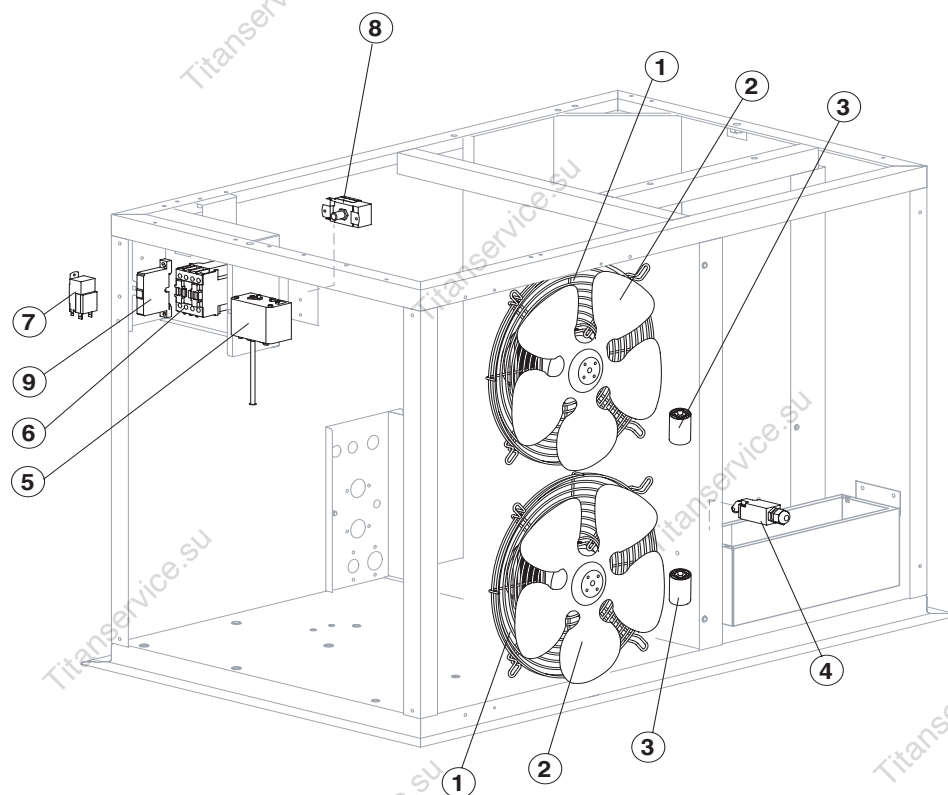


| Ref. | Spare Description | Code |
|------|-----------------------------|--------|
| 1 | Pump | 23600 |
| 2 | Heat Dissipator | 22430 |
| 3 | Pump Filter Gasket | 13080 |
| 4 | Filtering Element | 20254 |
| 5 | Pump Motor Support | 10161 |
| 6 | Pump-Filter Connection Pipe | 13084 |
| 7 | Pump Body | 10065 |
| 8 | Pump Impeller | 10066 |
| 9 | Diffusor | 10067 |
| 10 | Water Pump Basin Cover | 22420 |
| 11 | Floating Valve | 10188 |
| 12 | Water Pump Basin | C22443 |
| 13 | Connection | 20799 |
| 14 | Pump and Filter Assy | C26732 |



MUSTER 1500

ELECTRIC PARTS



| Ref. | Spare Description | Code |
|------|--|--------|
| 1 | Fan Motor Grid | 12053 |
| 2 | Fan Motor | 23468 |
| 3 | 5µF Capacitor | 23469 |
| 4 | Microswitch for Overflow Ice | 23746 |
| 5 | Safety Pressure Switch (Low Pressure) | 23763 |
| 6 | Contactor | 23398 |
| 7 | Bin Thermostat | R23005 |
| 8 | Safety Pressure Switch (High Pressure) | 23342 |
| 9 | Thermomagnetic circuit breaker | 23910 |