



# VM 500

## LIST OF THE EXPLODED VIEWS

From s/n. 297566 up Today

From s/n.141196 till s/n. 297565



SHELL ASSY

COOLING SYSTEM

HYDRAULIC CIRCUIT

SPRAYER PUMP

ELECTRIC PARTS



SHELL ASSY

COOLING SYSTEM

HYDRAULIC CIRCUIT

SPRAYER PUMP

ELECTRIC PARTS

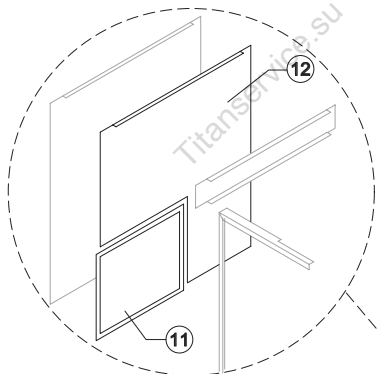


# VM 500

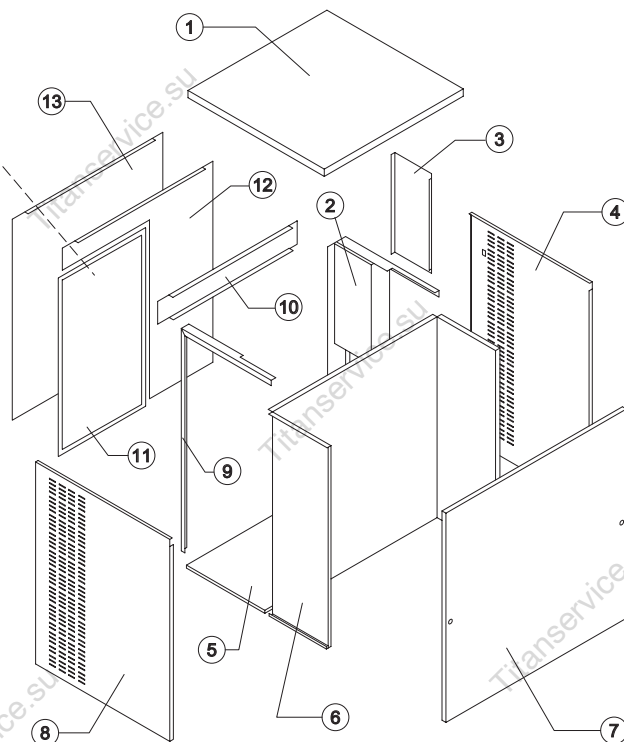
From s/n. 297566 up Today

## SHELL ASSY

OLD



NEW



### Common Parts

Ref.	Spare Description	Code
1	Top Assembly	C22813
2	Right Angle Bar	22814
3	Electrical Box Cover	21323
4	Right Side Panel	22408
5	Base Plate	22812
6	Evaporator Chamber	22819
7	Front Panel Assembly	C22816B
8	Left Side Panel	22822
9	Left Angle Bar	22820
10	Rear Cross Bar	22817

### Parts for Air-Cooled Version Only

Ref.	Spare Description	Code
11	Filter	See Table -
12	Rear Panel	See Table -

### Parts for Water-Cooled Version Only

Ref.	Spare Description	Code
13	Rear Panel	21285

#### Ref. 11 - Filter

Version	Code
NEW	18178
OLD	18163

#### Ref. 12 - Rear Panel

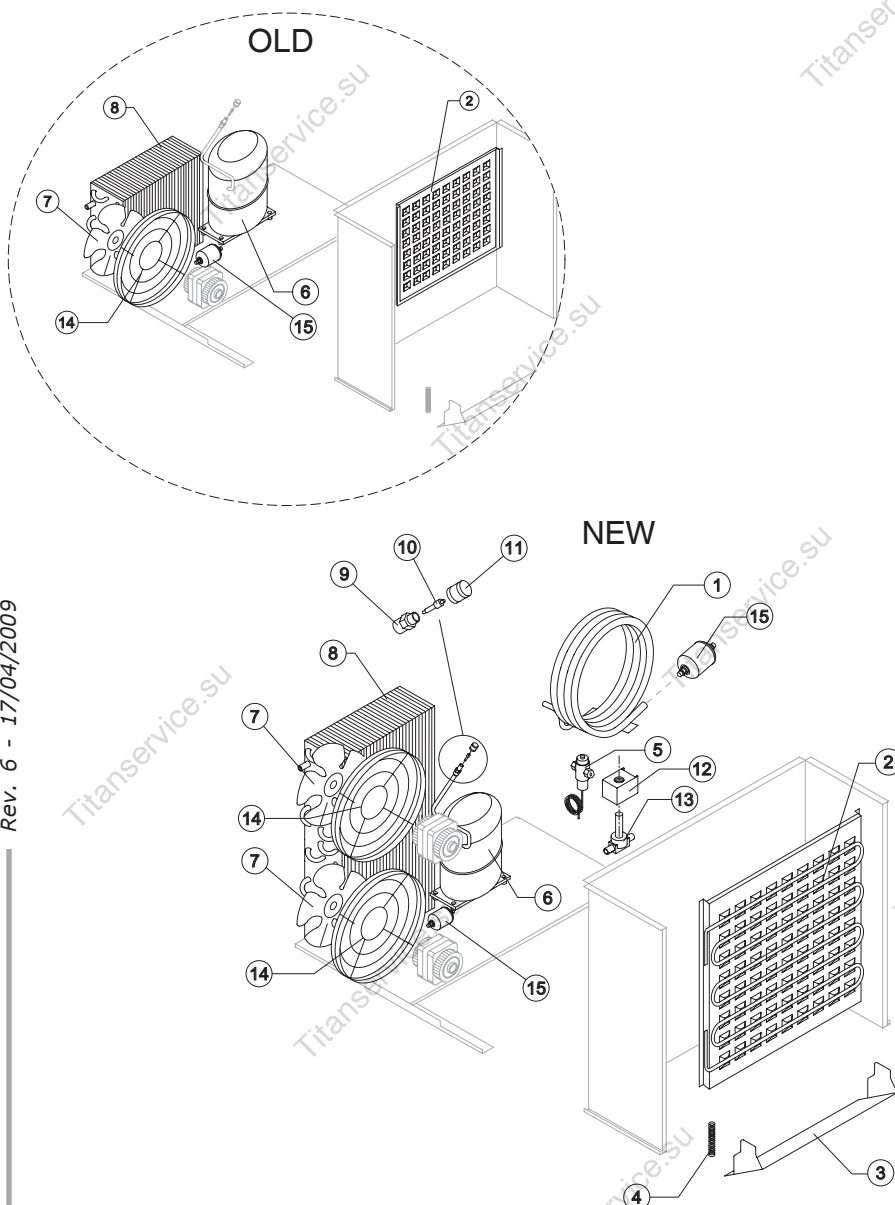
Version	Code
NEW	21324
OLD	21286



# VM 500

From s/n. 297566 up Today

## COOLING SYSTEM



### Common Parts

Ref.	Spare Description	Code
2	Evaporator	See Table
3	Horizontally Hinged Panel	22608
4	Spring	20464
6	Compressor	See Table
9	Vacuum-Charge Valve Body	14007
10	Vacuum-Charge Valve Device	14005
11	Vacuum-Charge Valve Plug	14006
12	Hot Gas Valve Coil	See Table
13	Hot Gas Valve Body	20409
15	Liquid Line Drier	14084

### Parts for Air-Cooled Version Only

Ref.	Spare Description	Code
7	Sucking Fan	See Table
8	Air Condenser	See Table

### Parts for Water-Cooled Version Only

Ref.	Spare Description	Code
1	Water Condenser	14081
5	Pressostatic Valve	20210

### Ref. 1 - Evaporator

Version	Code
NEW	D10228
OLD	D10227

### Ref. 6 - Compressor

Tension	NEW	OLD
T11	23840	23543
T12	23897	23642
T18	23642	23642

### Ref. 7 - Sucking Fan

Version	Code
NEW	20153
OLD	20407

### Ref. 8 - Air Condenser

Version	Code
NEW	20406
OLD	20670

### Ref. 12- Hot Gas Valve Coil

Tension	Code
T11	23091
T12	23091
T18	23843



# VM 500

From s/n. 297566 up Today

## HYDRAULIC CIRCUIT

### Common Parts

Ref.	Spare Description	Code
1	Overflow Pipe	10133
2	OR Gasket for Overflow Pipe	20233
3	Overflow Pipe Nipple	10471
4	Silicone Gasket	13006
5	Semirigid Polyethylene Gasket	13007
6	Bin Discharge Nut	10096
7	Water Basin	10395
8	Ice Cubes Slide	D12057
10	Overflow Pipe Nipple	13120
11	Drain Nipple	10431
12	Discharge Valve Connection Pipe - Discharge	13040
13	Discharge Valve Connection Pipe ("T" Shaped)	13102

### Parts for Water-Cooled Version Only

Ref.	Spare Description	Code
9	Connection with Plate	C20462

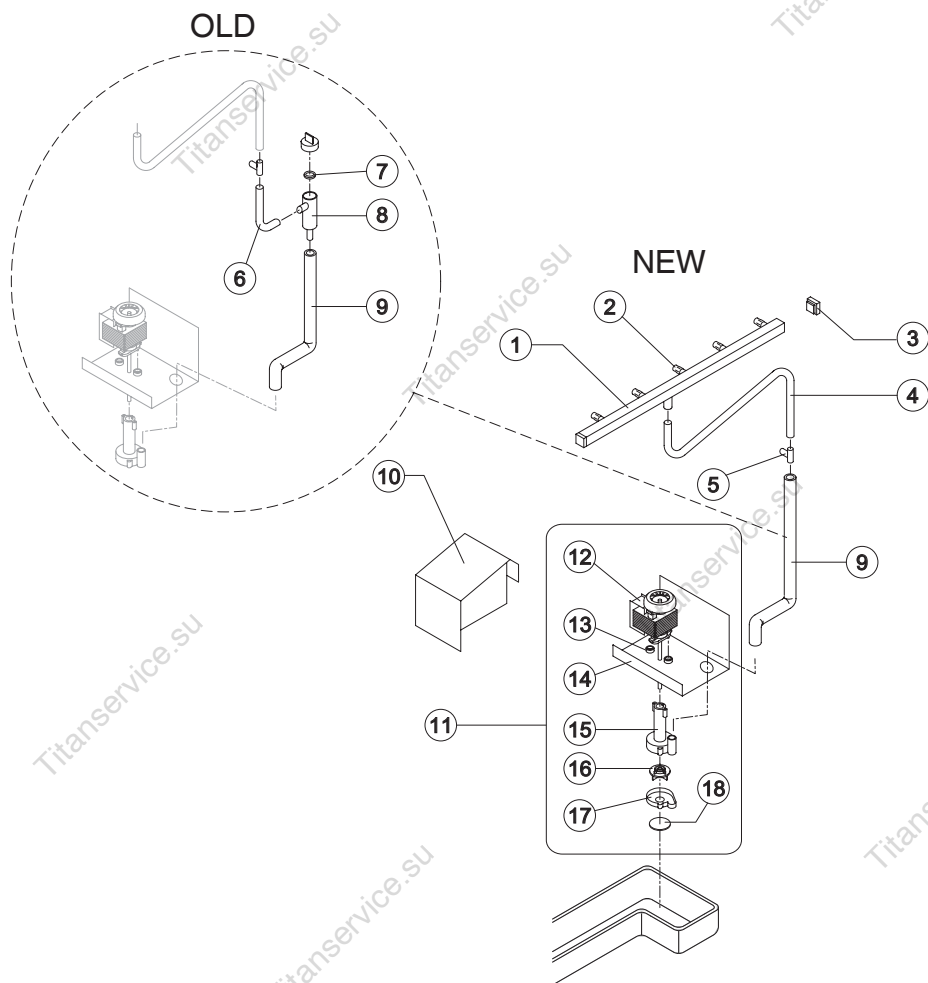
Rev. 6 - 17/04/2009



# VM 500

From s/n. 297566 up Today

## SPRAYER PUMP



Ref.	Spare Description	Code
1	Sprayers Bar Assembly	C20465
2	Sprayer	D20002
3	Sprayers Bar Plug	10012
4	Sprinkler Bar Connecting Pipe ("T" Shaped)	13134
5	Plastic "T" ø 20	10082
6	Sprayers Feeding Pipe	13005
7	Pump Filter Gasket	13080
8	Pump Filter	10139
9	"T" - Pump Connection Pipe	See Table -
10	Protection Pump Panel	22804
11	Pump Assembly	See Table -
12	Pump	See Table -
13	Pump Motor Shim	20510
14	Pump Motor Support	22799
15	Pump Body	10065
16	Pump Impeller	See Table -
17	Diffusor	10067
18	Pump Filter	20518

Ref. 9 - "T" - Pump Connection Pipe

Version	Code
NEW	13113
OLD	13157

Ref. 12 - Pump

Tension	Code
T11	23073
T12	23187
T18	23187

Ref. 11 - Pump Assy

Tension	Code
T11	C23624
T12	C23616
T18	C23616

Ref. 16 - Pump Impeller

Tension	Code
T11	10066
T12	10138
T18	10138

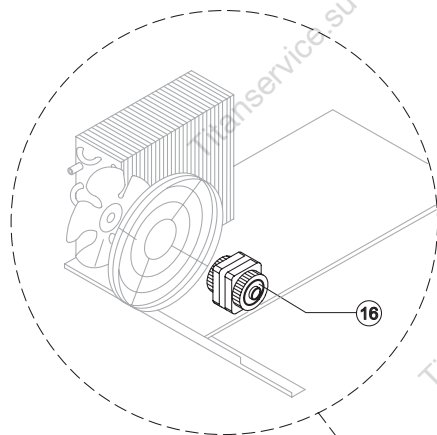


# VM 500

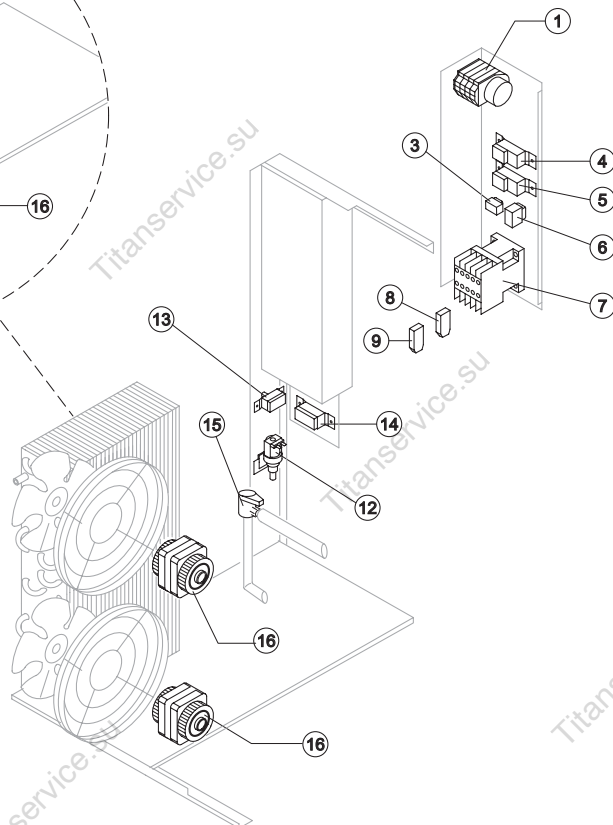
From s/n. 297566 up Today

## ELECTRIC PARTS

OLD



NEW



### Common Parts

Ref.	Spare Description	Code
1	Timer	See Table
3	"Cleaning" Switch	23619
4	Bin Thermostat	R23005
5	Evaporator Thermostat	R23597
6	Green Light Switch (On-Off)	23327
7	Contactor	23147
12	1 Way- Water Inlet Valve	23787
13	Safety Pressure Switch	23342
15	Water Outlet Valve	23537

### Parts for Air-Cooled Version Only

Ref.	Spare Description	Code
8	Anti Radio Interference Filter	Only T11 C23459
9	Anti Radio Interference Filter	Only T11 C23458
14	Condenser Pressure Switch	See Table -
16	Fan Motor	23121

### Ref. 1 - Timer

Tensione	Codice
T11	23635
T12	23632
T18	23632

### Ref. 14 - Cond. Pressure Switch

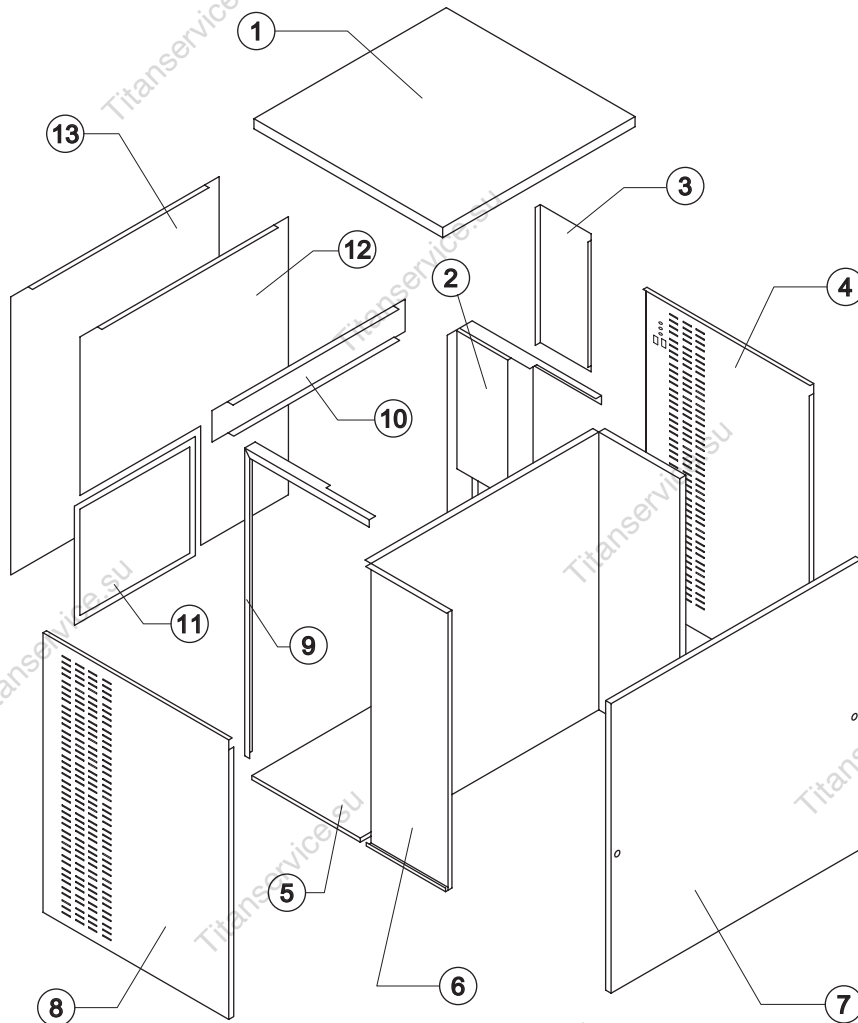
Tension	Code
T11	23175
T12	23175
T18	23680



# VM 500

From s/n. 141196 till s/n. 297565

## SHELL ASSY



### Common Parts

Ref.	Spare Description	Code
1	Top Assembly	C22813
2	Right Angle Bar	22814
3	Electrical Box Cover	21274
4	Right Side Panel	22821
5	Base Plate	22812
6	Evaporator Chamber	22819
7	Front Panel Assembly	C22816B
8	Left Side Panel	22822
9	Left Angle Bar	22820
10	Rear Cross Bar	22817

### Parts for Air-Cooled Version Only

Ref.	Spare Description	Code
11	Filter	18163
12	Rear Panel	21286

### Parts for Water-Cooled Version Only

Ref.	Spare Description	Code
13	Rear Panel	21285





# VM 500

From s/n. 141196 till s/n. 297565

## COOLING SYSTEM

### Common parts

Ref.	Spare Description	Code
2	Evaporator	D10227
3	Horizontally Hinged Panel	22608
4	Spring	20464
6	Compressor	See Table -
9	Vacuum-Charge Valve Body	14007
10	Vacuum-Charge Valve Device	14005
11	Vacuum-Charge Valve Plug	14006
12	Hot Gas Valve Coil	See Table - T11

10066

T12	10138
T18	10138
T11	23073

### Parts for Air-Cooled Version Only

Ref.	Spare Description	Code
T12	23187	
T18	23187	
7	Sucking Fan T11 C23624	20407
8	Air Condenser T18 C23616	20670

### Parts for Water-Cooled Version Only

Ref.	Spare Description	Code
13	Hot Gas Valve Body	20409
1	Water Condenser	14081
5	Pressostatic Valve	20210

### Ref. 6 - Compressor

Tension	Code	Note
T11	23543	
T12	23642	Current Version
T12	23593	Till s/n. 189944
T18	23642	Current Version
T18	23593	Till s/n. 189944

### Rif. 12- Bobina Valv. Inv. Ciclo

Tensione	Codice
T11	23091
T12	23091
T18	23843





# VM 500

From s/n. 141196 till s/n. 297565

## HYDRAULIC CIRCUIT

### Common parts

Ref.	Spare Description	Code
1	Overflow Pipe	10133
2	OR Gasket for Overflow Pipe	20233
3	Overflow Pipe Nipple	10241
4	Silicone Gasket	13006
5	Semirigid Polyethylene Gasket	13007
6	Bin Discharge Nut	10096
7	Water Basin	10395
8	Ice Cubes Slide	D12057
10	Overflow Pipe Nipple	13120
11	Drain Nipple	10431
12	Discharge Valve Connection Pipe - Discharge	13040
13	Discharge Valve Connection Pipe ("T" Shaped)	13102

### Parts for Water-Cooled Version Only

Ref.	Spare Description	Code
9	Connection with Plate	C20462

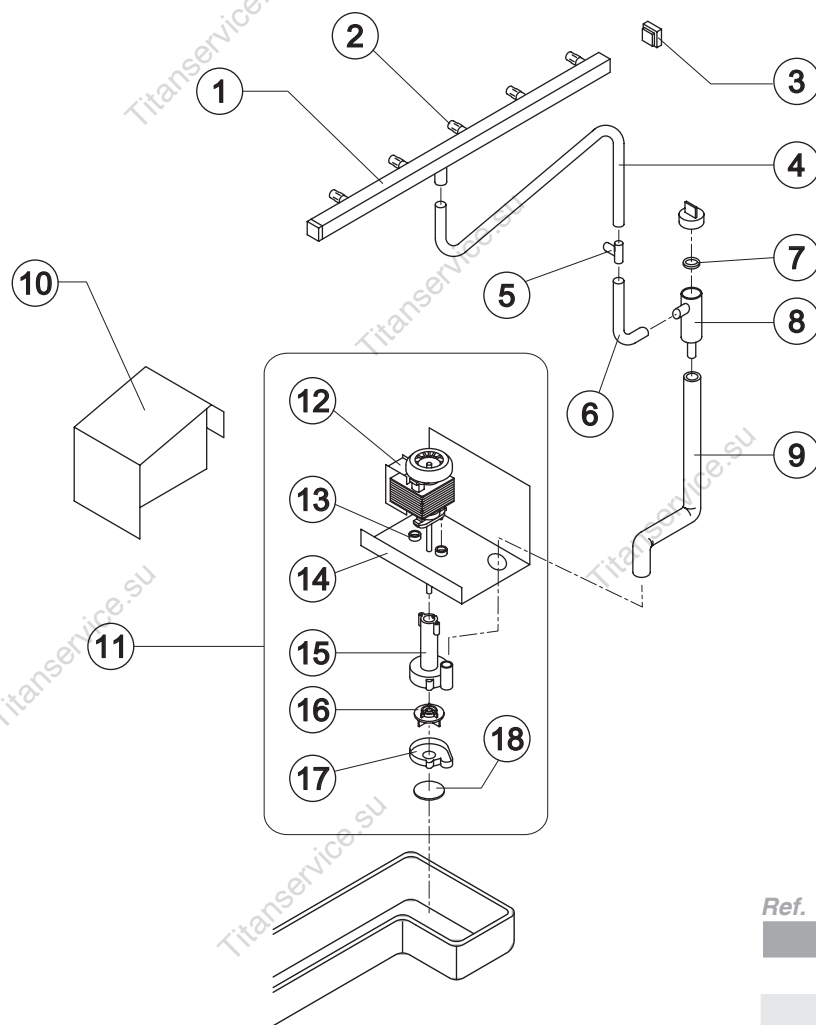
Rev. 6 - 17/04/2009



# VM 500

From s/n. 141196 till s/n. 297565

## SPRAYER PUMP



Ref.	Spare Description	Code
1	Sprayers Bar Assembly	C20465
2	Sprayer	D20002
3	Sprayers Bar Plug	10012
4	Sprinkler Bar Connecting Pipe ("T" Shaped)	13134
5	Plastic "T" ø 20	10082
6	Sprayers Feeding Pipe	13005
7	Pump Filter Gasket	13080
8	Pump Filter	10139
9	"T" - Pump Connection Pipe	13157
10	Protection Pump Panel	22804
11	Pump Assembly	See Table -
12	Pump	See Table -
13	Thickness Pump Motor	20510
14	Pump Motor Support	22799
15	Pump Body	10065
16	Pump Impeller	See Table -
17	Diffusor	10067
18	Pump Filter	20518

Ref. 11 - Pump Assy

Tension	Code
T11	C23624
T12	C23616
T18	C23616

Ref. 12 - Pump

Tension	Code
T11	23073
T12	23187
T18	23187

Ref. 16 - Pump Impeller

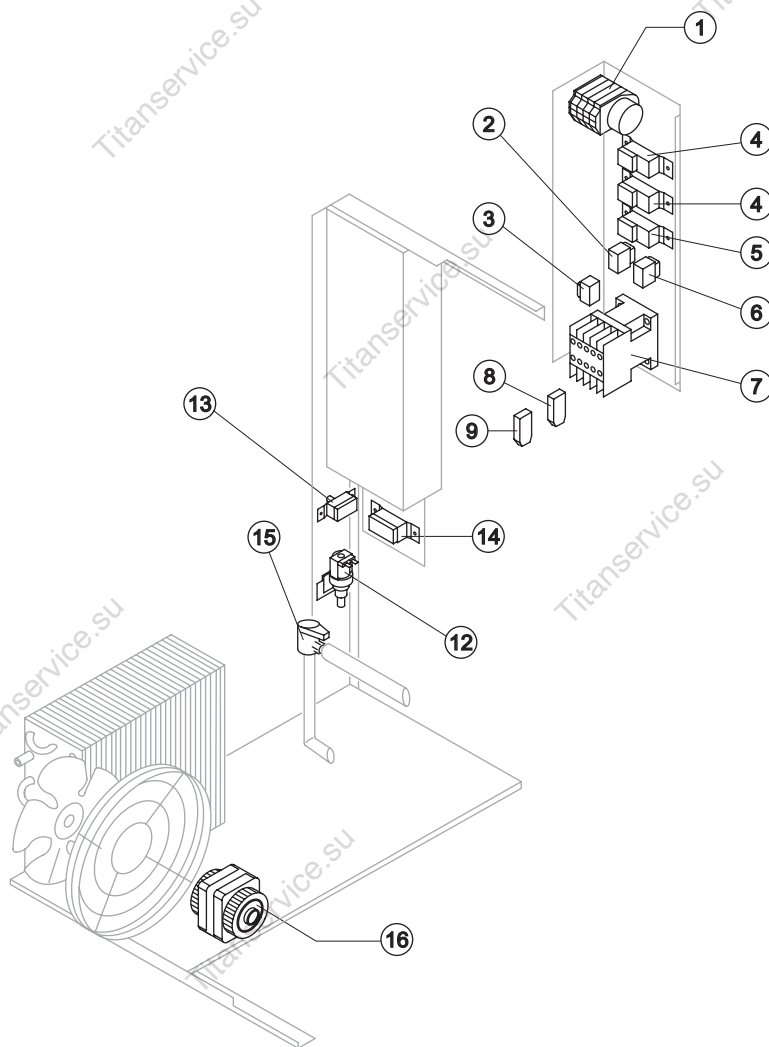
Tension	Code
T11	10066
T12	10138
T18	10138



# VM 500

From s/n. 141196 till s/n. 297565

## ELECTRIC PARTS



### Common parts

Ref.	Spare Description	Code
1	Timer	See Table
2	Light Switch "Economy-Full"	23611
3	"Cleaning" Switch	23619
4	Bin Thermostat	R23005
5	Evaporator Thermostat	R23597
6	Green Light Switch (On-Off)	23327
7	Contactors	23147
12	1 Way- Water Inlet Valve	23787
13	Safety Pressure Switch	23342
15	Water Outlet Valve	23537

### Parts for Air-Cooled Version Only

Ref.	Spare Description	Code
8	Anti Radio Interference Filter	Only T11 C23459
9	Anti Radio Interference Filter	Only T11 C23458
14	Condenser Pressure Switch	See Table -
16	Fan Motor	23121

#### Ref. 1 - Timer

Tension	Code
T11	23635
T12	23632
T18	23632

#### Ref. 14 - Cond. Pressure Switch

Tension	Code
T11	23175
T12	23175
T18	23680