



# VM 900

## LIST OF THE EXPLODED VIEWS

From s/n. 297566 up Today



SHELL ASSY

COOLING SYSTEM

HYDRAULIC CIRCUIT

SPRAYER PUMP

ELECTRIC PARTS

From s/n.141196 Till s/n. 297565



SHELL ASSY

COOLING SYSTEM

HYDRAULIC CIRCUIT

SPRAYER PUMP

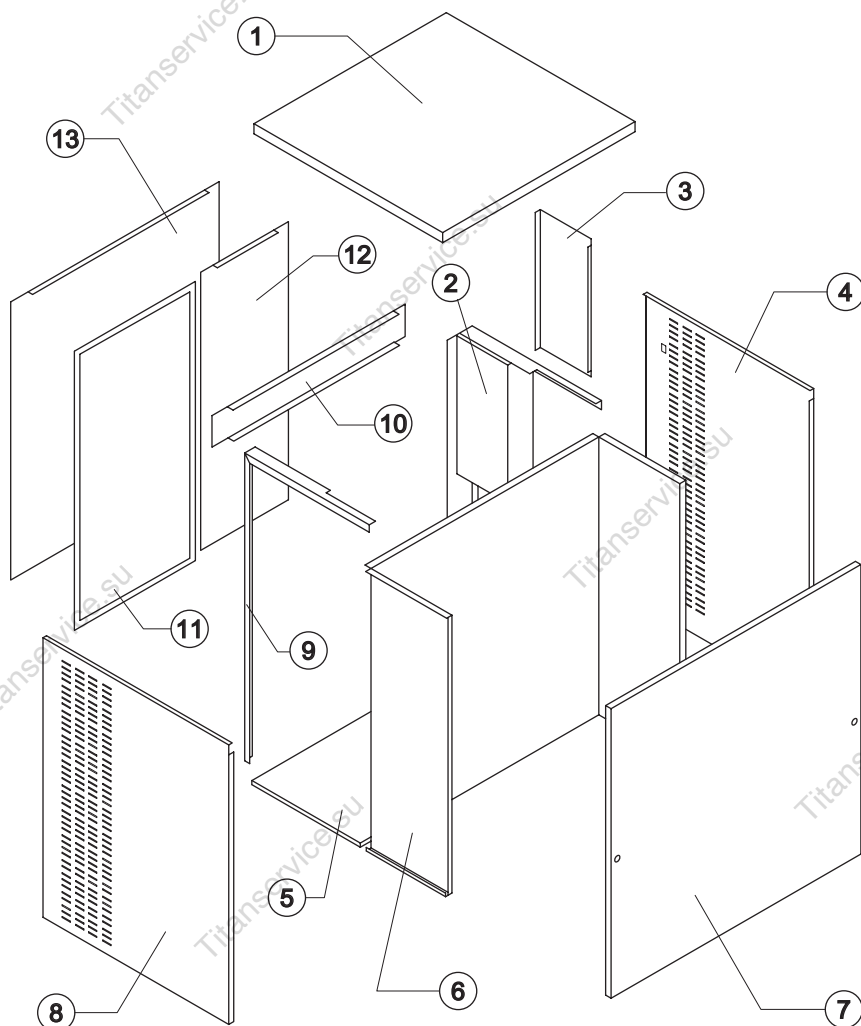
ELECTRIC PARTS



# VM 900

From s/n. 297566 up Today

## SHELL ASSY



### Common Parts

Ref.	Spare Description	Code
1	Top Assembly	C22813
2	Right Angle Bar	22814
3	Electrical Box Cover	21323
4	Right Side Panel	22408
5	Base Plate	22812
6	Evaporator Chamber	22819
7	Front Panel Assembly	C22816B
8	Left Side Panel	22822
9	Left Angle Bar	22820
10	Rear Cross Bar	22817

### Parts for Air-Cooled Version Only

Ref.	Spare Description	Code
11	Filter	18166
12	Rear Panel	21287

### Parts for Water-Cooled Version Only

Ref.	Spare Description	Code
13	Rear Panel	21285



# COOLING SYSTEM



### Parts for Air-Cooled Version Only

### Parts for Water-Cooled Version Only

**Ref. 7 - Compressor**

**Ref. 13 - Hot Gas Valve Coil**

Page 3



# VM 900

From s/n. 297566 up Today

## HYDRAULIC CIRCUIT

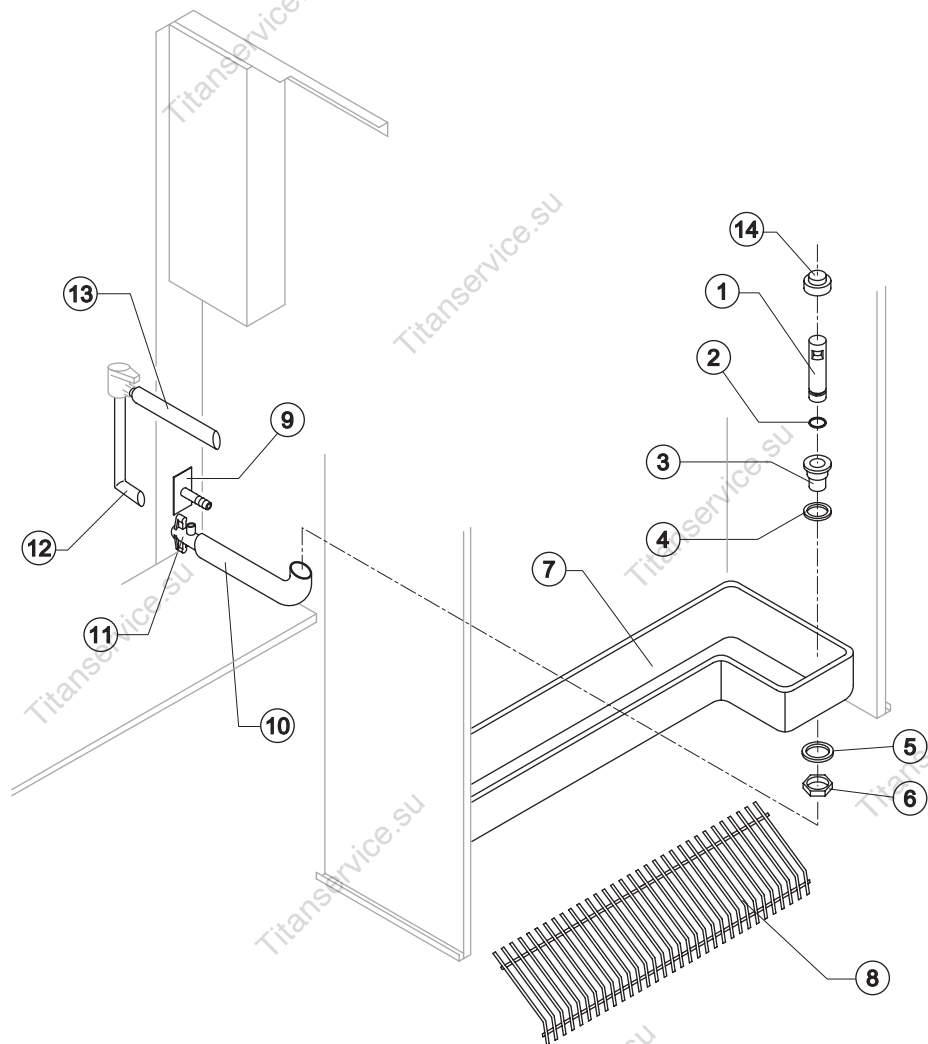
### Common Parts

Ref.	Spare Description	Code
1	Overflow Pipe	10399
2	OR Gasket for Overflow Pipe	20233
3	Overflow Pipe Nipple	10471
4	Silicone Gasket	13006
5	Semirigid Polyethylene Gasket	13007
6	Bin Discharge Nut	10096
7	Water Basin	10395
8	Ice Cubes Slide	D12057
10	Overflow Pipe Nipple	13120
11	Drain Nipple	10431
12	Discharge Valve Connection Pipe - Discharge	13040
13	Discharge Valve Connection Pipe ("T"Shaped)	13102
14	Overflow Cap	10305

### Parts for Water-Cooled Version Only

Ref.	Spare Description	Code
9	Conenction with Plate	C20462

Rev. 6 - 25/05/2009

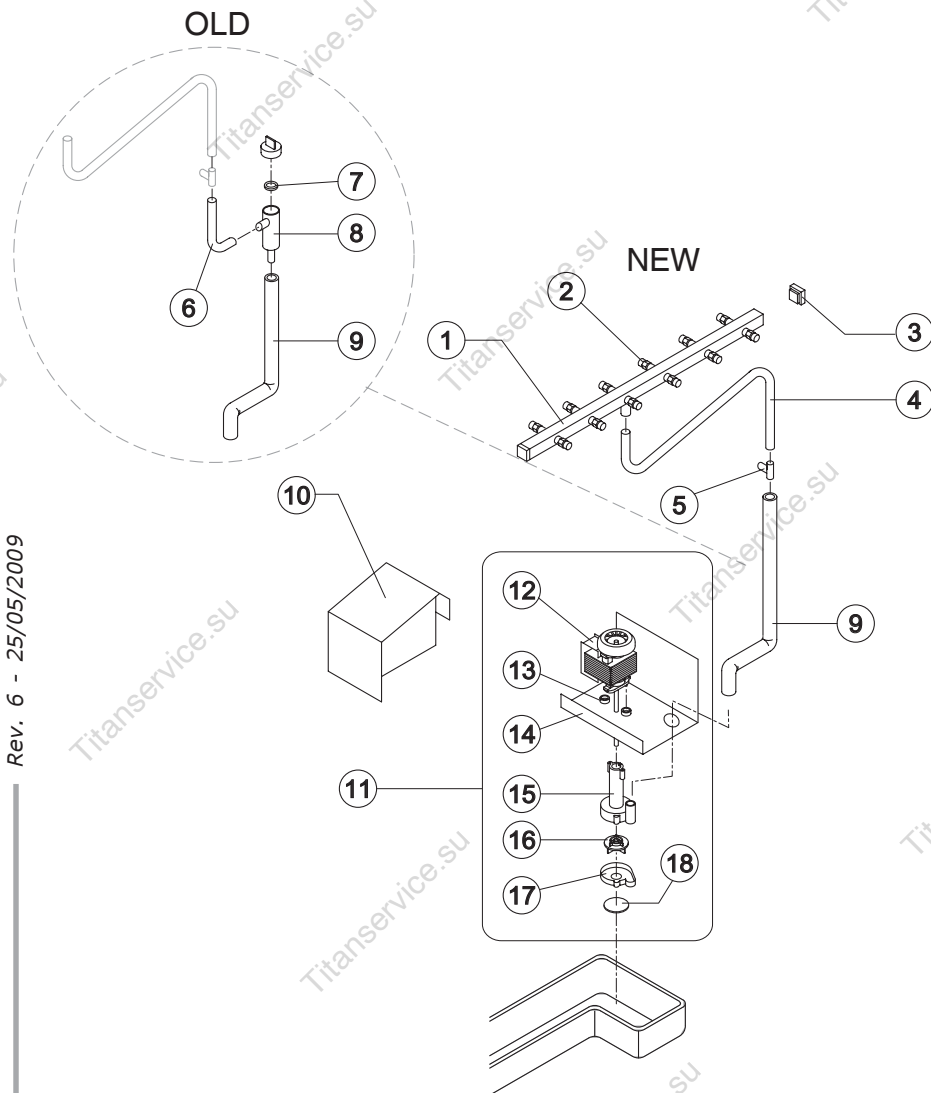




# VM 900

From s/n. 297566 up Today

## SPRAYER PUMP



Ref.	Spare Description	Code
1	Sprayers Bar Assembly	C20617
2	Sprayer	D20463
3	Sprayers Bar Plug	10012
4	Sprinkler Ba Connection Pipe ("T" Shaped)	13134
5	Plastic "T" ø 20	10082
6	Sprayers Feeding Pipe	13005
7	Pump Filter Gasket	13080
8	Pump Filter	10139
9	"T" - Pump Connection Pipe	See Table -
10	Protection Pump Panel	22804
11	Pump Assembly	See Table -
12	Pump	See Table -
13	Pump Motor Shim	20510
14	Pump Motor Support	22799
15	Pump Body	10065
16	Pump Impeller	See Table -
17	Diffusor	10067
18	Pump Filter	20518

Ref. 9 - "T"-Pump Connection Pipe

Version	Code
NEW	13113
OLD	13157

Ref. 12 - Pump

Tension	Code
T11	23600
T12	23601
T18	23601

Ref. 11 - Pump Assembly

Tension	Code
T11	C23626
T12	C23627
T18	C23627

Ref. 16 - Pump Impeller

Tension	Code
T11	10066
T12	10138
T18	10138



# VM 900

From s/n. 297566 up Today

## ELECTRIC PARTS

### Common Parts

Ref.	Spare Description	Code
1	Timer	See Table
3	"Cleaning" Switch	23619
4	Bin Thermostat	R23005
5	Evaporator Thermostat	R23597
6	Green Light Switch (On-Off)	23327
7	Contactor	23147
12	1 Way- Water Inlet Valve	23623
13	Safety Pressure Switch	23342
15	Water Outlet Valve	23537

### Parts for Air-Cooled Version Only

Ref.	Spare Description	Code
8	Anti Radio Interference Filter	Only T11 C23459
9	Anti Radio Interference Filter	Only T11 C23458
14	Condenser Pressure Switch	See Table -
16	Fan Motor	23121

#### Ref. 1 - Timer

Tension	Code
T11	23635
T12	23632
T18	23632

#### Ref. 14 - Cond. Pressure Switch

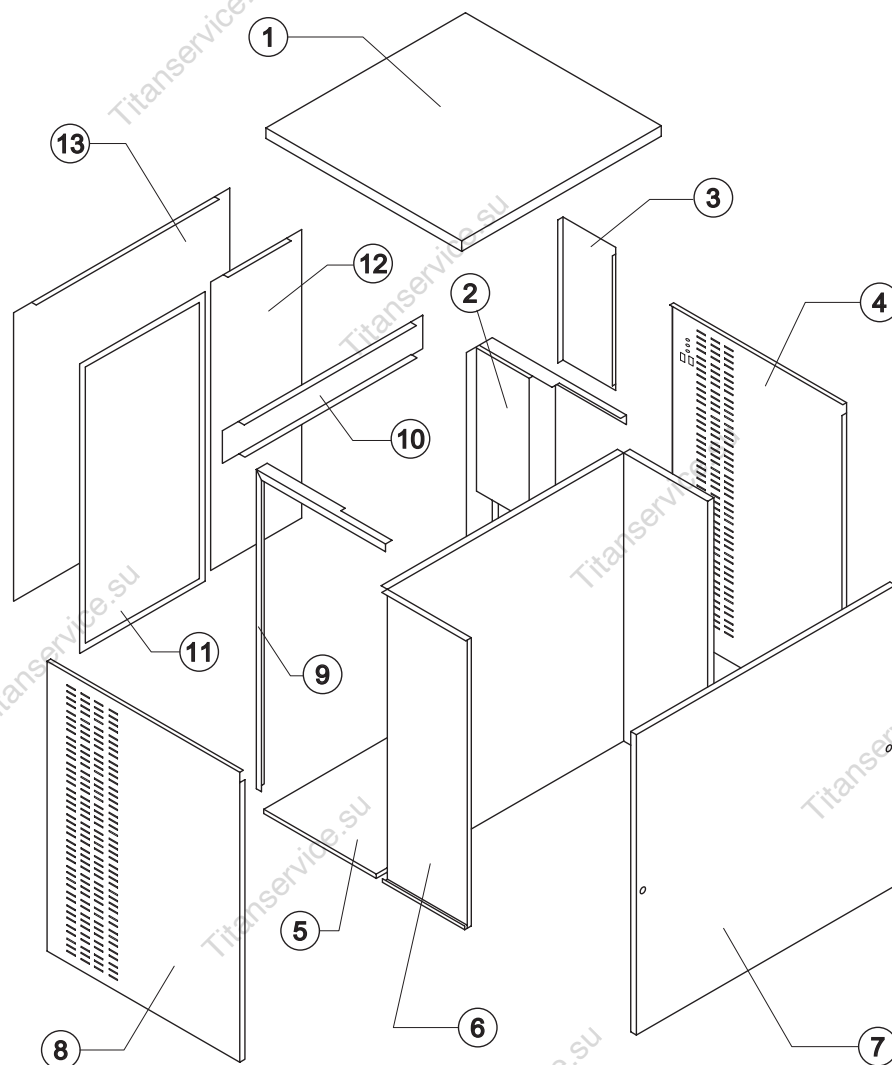
Tension	Code
T11	23175
T12	23175
T18	23680



# VM 900

From s/n. 141196 Till s/n. 297565

## SHELL ASSY



### Common Parts

Ref.	Spare Description	Code
1	Top Assembly	C22813
2	Right Angle Bar	22814
3	Electrical Box Cover	21274
4	Right Side Panel	22821
5	Base Plate	22812
6	Evaporator Chamber	22819
7	Front Panel Assembly	C22816B
8	Left Side Panel	22822
9	Left Angle Bar	22820
10	Rear Cross Bar	22817

### Parts for Air-Cooled Version Only

Ref.	Spare Description	Code
11	Filter	18166
12	Rear Panel	21287

### Parts for Water-Cooled Version Only

Ref.	Spare Description	Code
13	Rear Panel	21285

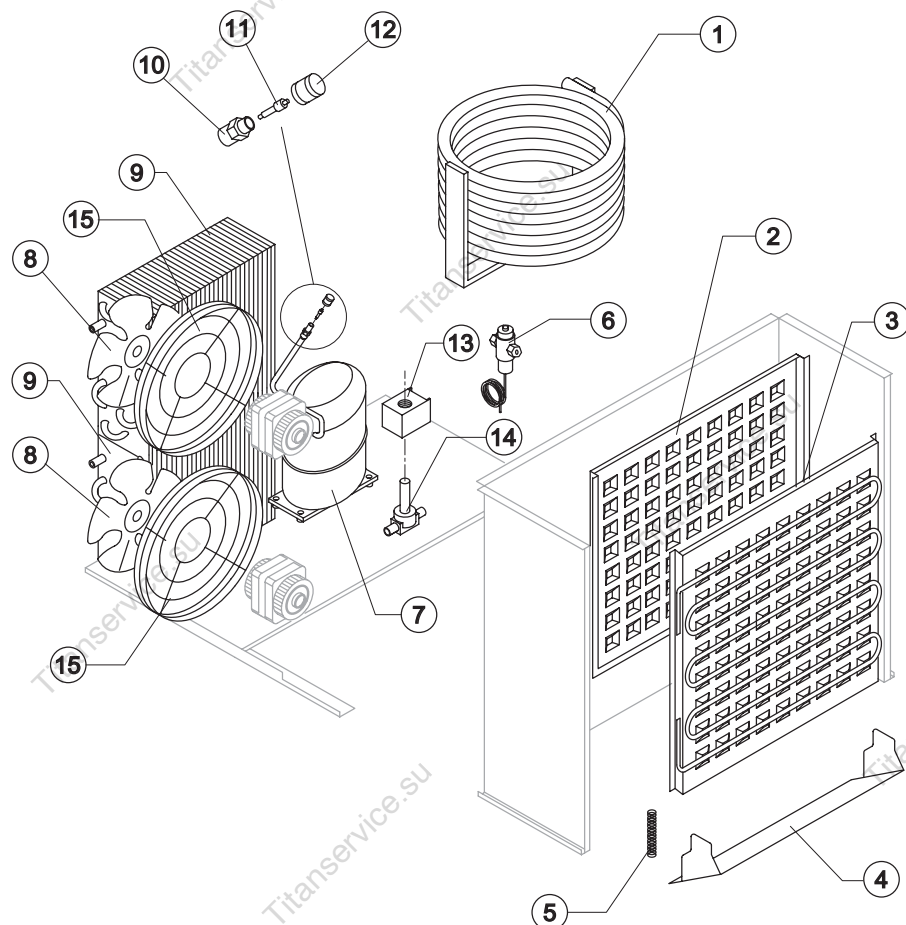




# VM 900

From s/n. 141196 Till s/n. 297565

## COOLING SYSTEM



### Common Parts

Ref.	Spare Description	Code
2	Evaporator (Back)	D10227
3	Evaporatore (Front)	D10228
4	Horizontally Hinged Panel	22608
5	Spring	20464
7	Compressor	See Table -
10	Vacuum-Charge Valve Body	14007
11	Vacuum-Charge Valve Device	14005
12	Vacuum-Charge Valve Plug	14006
13	Hot Gas Valve Coil	See Table -
14	Hot Gas Valve Body	20409

### Parts for Air-Cooled Version Only

Ref.	Spare Description	Code
8	Sucking Fan	20407
9	Air Condenser	20670
15	Fan Motor Grid	12056

### Parts for Water-Cooled Version Only

Ref.	Spare Description	Code
1	Water Condenser	14285
6	Pressostatic Valve	20149

### Ref. 7 - Compressor

Tension		Code
T11	Current Version	23647
T11	Till s/n. .173858	23489
T12	Current Version	23651
T12	Till s/n. 173885	23527
T18	Current Version	23651
T18	Till s/n. 173885	23527

### Ref. 13 - Hot Gas Valve Coil

Tension	Code
T11	23091
T12	23091
T18	23843





# VM 900

From s/n. 141196 Till s/n. 297565

## HYDRAULIC CIRCUIT

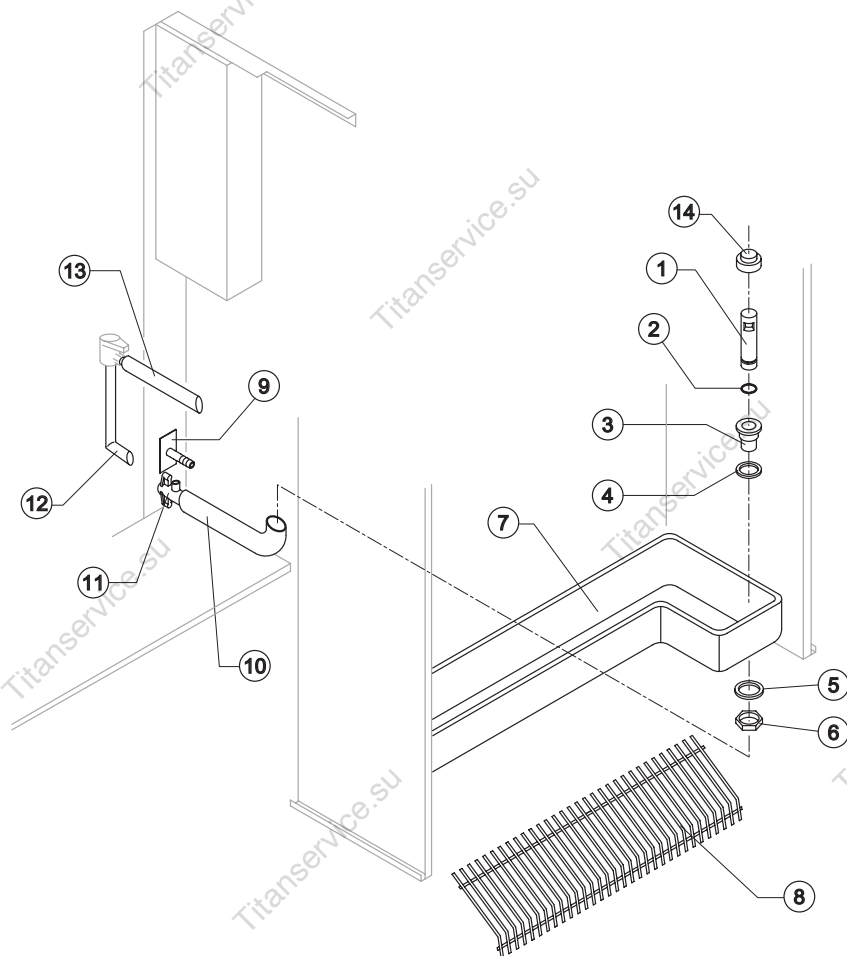
### Common Parts

Ref.	Spare Description	Code
1	Overflow Pipe	10399
2	OR Gasket for Overflow Pipe	20233
3	Silicone Gasket	10241
4	Silicone Gasket	13006
5	Semirigid Polyethylene Gasket	13007
6	Bin Discharge Nut	10096
7	Water Basin	10395
8	Ice Cubes Slide	D12057
10	Overflow Pipe Nipple	13120
11	Drain Nipple	10431
12	Discharge Valve Connection Pipe - Discharge	13040
13	Discharge Valve Connection Pipe ("T"Shaped)	13102
14	Overflow Cap	10305

### Parts for Water-Cooled Version Only

Ref.	Spare Description	Code
9	Connection with Plate	C20462

Rev. 6 - 25/05/2009

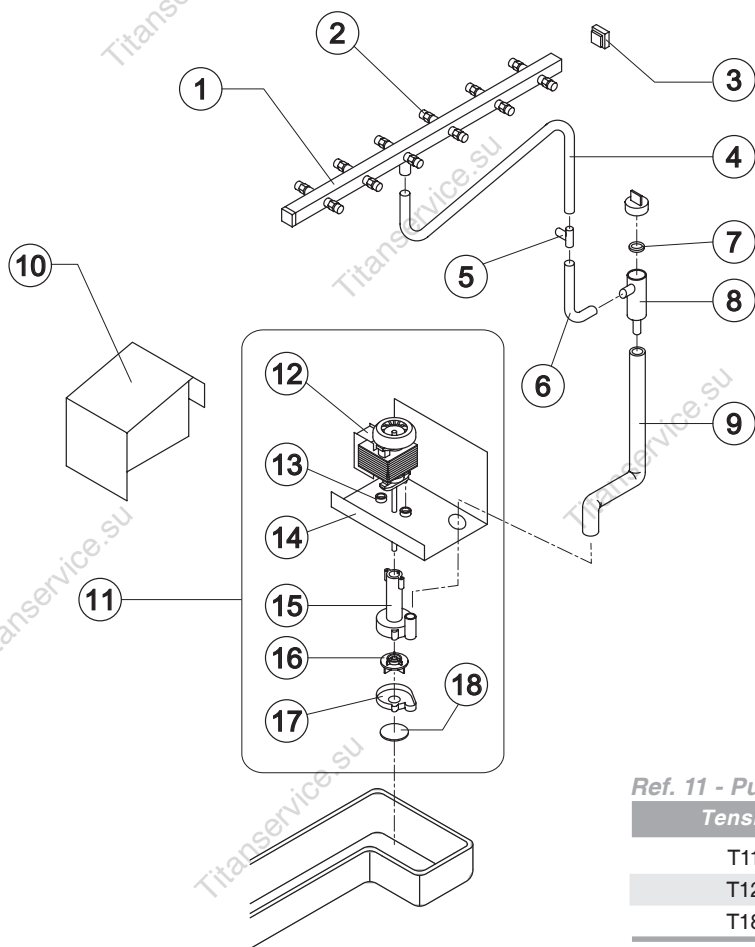




# VM 900

From s/n. 141196 Till s/n. 297565

## SPRAYER PUMP



Ref.	Spare Description	Code
1	Sprayers Bar Assembly	C20617
2	Sprayer	D20463
3	Sprayers Bar Plug	10012
4	Sprinkler Ba Connection Pipe ("T" Shaped)	13134
5	Plastic "T" ø 20	10082
6	Sprayers Feeding Pipe	13005
7	Pump Filter Gasket	13080
8	Pump Filter	10139
9	"T" - Pump Connection Pipe	13157
10	Protection Pump Panel	22804
11	Pump Assembly	See Table -
12	Pump	See Table -
13	Pump Motor Shim	20510
14	Pump Motor Support	22799
15	Pump Body	10065
16	Pump Impeller	See Table -
17	Diffusor	10067
18	Pump Filter	20518

Ref. 11 - Pump Assembly

Tension	Code
T11	C23626
T12	C23627
T18	C23627

Ref. 12 - Pump

Tension	Code
T11	23600
T12	23601
T18	23601

Ref. 16 - Pump Impeller

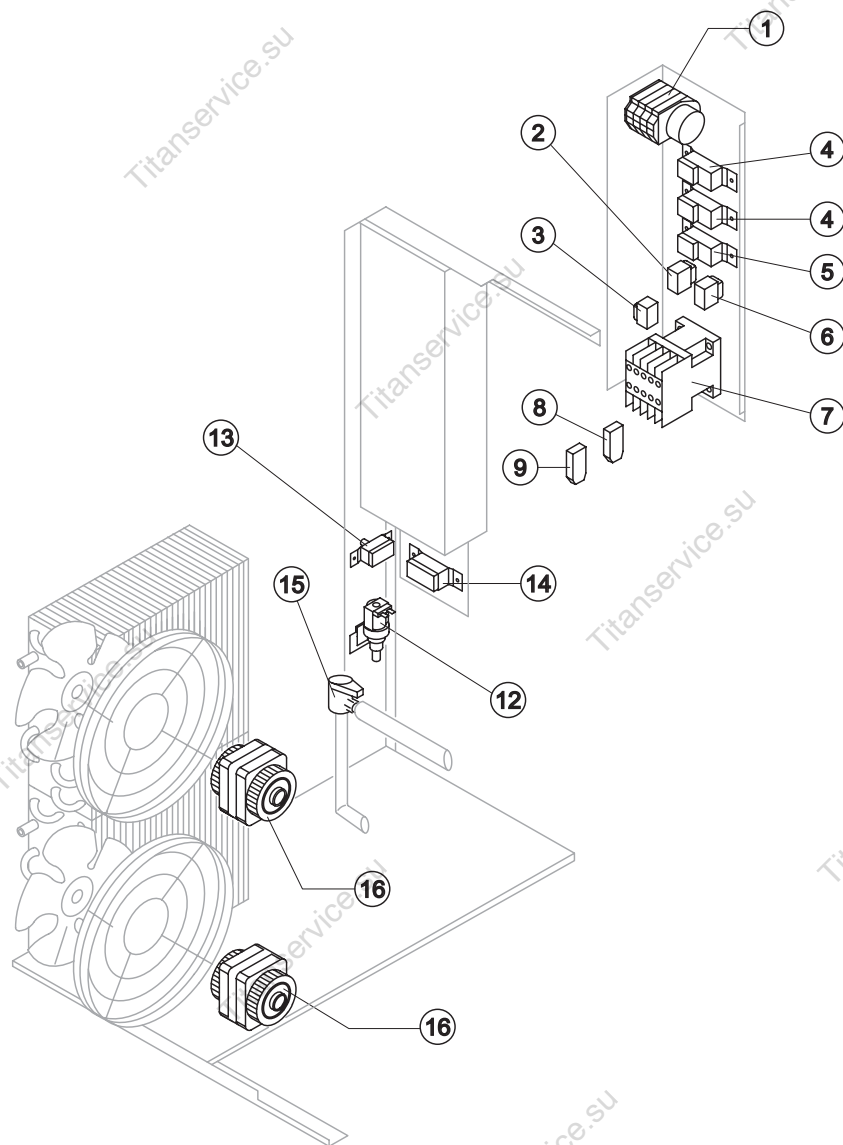
Tension	Code
T11	10066
T12	10138
T18	10138



# VM 900

From s/n. 141196 Till s/n. 297565

## ELECTRIC PARTS



### Common Parts

Ref.	Spare Description	Code
1	Timer	See Table
2	Light Switch "Economy-Full"	23611
3	"Cleaning" Switch	23619
4	Bin Thermostat	R23005
5	Evaporator Thermostat	R23597
6	Green Light Switch (On-Off)	23327
7	Contactor	23147
12	1 Way- Water Inlet Valve	23623
13	Safety Pressure Switch	23342
15	Water Outlet Valve	23537

### Parts for Air-Cooled Version Only

Ref.	Spare Description	Code
8	Anti Radio Interference Filter	Only T11 C23459
9	Anti Radio Interference Filter	Only T11 C23458
14	Condenser Pressure Switch	See Table 23175
16	Fan Motor	23121

### Ref. 1 - Timer

Tension	Code
T11	23635
T12	23632
T18	23632

### Ref. 14 - Cond. Pressure Switch

Tension	Code
T11	23175
T12	23175
T18	23680