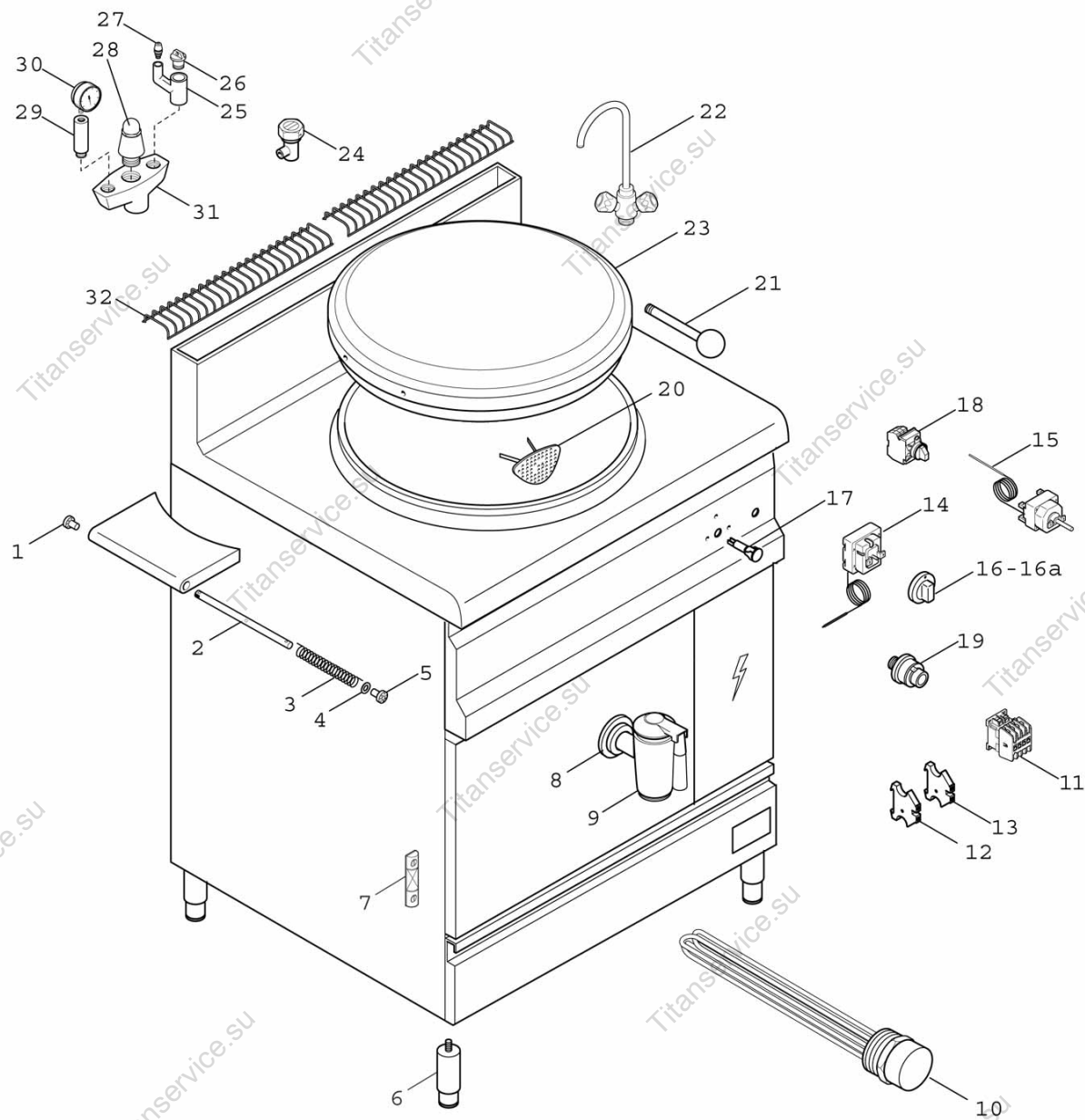




E7PI





E7PI

| Pos. Item | Codice Code | Descrizione | Item Description | Designation articles | Artikelbeschreibung | Decripción artículos | N° pezzi - No. pieces | | | | | |
|----------------|----------------|-------------------------------------|--------------------------------|---------------------------------------|--------------------------------------|---|-----------------------|--|--|------------------------------|--|------|
| | | | | | | | | | | | | E7PI |
| 1 | 31889000 | Mozzo cern.ant. e7pi-g7pi-g7pd | Hooge cern.e7pi-g7pi-g7pd | Gond cha. e7pi-g7pi-g7pd | Scharnier. e7pi-g7pi-g7pd | Cubo anter. bi. e7pi-g7pi-g7pd | | | | | | 1 |
| 2 | 31291000 | Tube per molla e7pi-g7pi-g7pd | Sp. tubero e7pi-g7pi-g7pd | Toube pour re. e7pi-g7pi-g7pd | Fed. e7pi-g7pi-g7pd | Tube para mu. e7pi-g7pi-g7pd | | | | | | 1 |
| 3 | 31878200 | Molla e7pi-g7pi-g7pd | Sp. e7pi-g7pi-g7pd | Re. e7pi-g7pi-g7pd | Fed. e7pi-g7pi-g7pd | Mu. e7pi-g7pi-g7pd | | | | | | 1 |
| 4 | 31938200 | Rondel. x molla e7pi-g7pi-g7pd | Washer for sp.e7pi-g7pi-g7pd | Rondelle pour ressort | Federscheibe | Arandela para muelle | | | | | | 1 |
| e7pi-g7pi-g7pd | 31889200 | Mozzo cern.post.e7pi-g7pi-g7pd | Hooge cern.post.e7pi-g7pi-g7pd | Gond cha. e7pi-g7pi-g7pd | Scharnier. e7pi-g7pi-g7pd | Cubo post.bisagra e7pi-g7pi-g7pd | | | | cubo post.bisagra | | 1 |
| 6 | 24684200 | Piedino inox 1 1/2 h-125/175 | Foot 1 1/2 h-125/175 | Pied 1 1/2 h-125/175 | Fuss 1 1/2 h-125/175 | Pata 1 1/2 h-125/175 | | | | | | 4 |
| 7 | 31240000 | Livello "d" e7pi-g7pi | Level "d" e7pi-g7pi | Niveau e7pi-g7pi | Stand "d" e7pi-g7pi | Nivel "d" e7pi-g7pi | | | | nivel "d" e7pi-g7pi | | 1 |
| 8 | 31780000 | Bo. rub. e7pi-g7pi-g7pd (1997-2003) | Drain cook boss e7pi-g7pi-g7pd | Ron. podrain cook boss e7pi-g7pi-g7pd | Abfl. schahn-auflange e7pi-g7pi-g7pd | Ara. grifo de ablaschahn e7pi-g7pi-g7pd | | | | | | 1 |
| 9 | 31274300 | Rub. sc. e7pi-g7pi-g7pd (1997-2003) | 1 1/4 boiling pan drain tap | ro. de vidange marmite 1 1/4 | topf-ablasshahn 1 1/4 | grifo descarga marmita 1 1/4 | | | | | | 1 |
| 10 | 35040000 | | | | | | | | | | | 1 |
| 11 | 31205200 | Contattore e7pi | Electric meter e7pi | Contacteur e7pi | SchÜtz e7pi | Contactor e7pi | | | | | | 1 |
| 12 | 31886200 | Morsettiera di terra e7pi-g7pi | Earthing terminal board | Bornier de terre | Erdklemmen | Bornera de tierra | | | | | | 1 |
| 13 | 31886000 | Morsettiera e7pi | Ter. board e7pi | Bornier e7pi | Klemmbrett e7pi | Bornera e7pi | | | | | | 3 |
| e7pi | 14 | 31290500 | Term. lavoro 110Ø e7pi | Ope. thermost. 110Ø e7pi | Thermost. de fonctionn. 110Ø e7pi | Term. de funcionam. 110Ø e7pi | | | | thermost. de funcionam. 110Ø | | 1 |
| 15 | 31290200 | Termostato sicurezza g7pi | Sa. thermostat g7pi | Ther. de sÜretÉ g7pi | Sicherhei. g7pi | Term. de seguridad g7pi | | | | | | 1 |
| 16 | 35876200 | Manopola rossa p. 6x4.6 a o° | Red knob 6x4.6 o° c | Manette rouge 6x4.6 o° c | Drehknopf 6x4.6 o° c | Mando rojo 6x4.6 o° c | | | | | | 1 |
| 16A | 31954100 | Serig.rossa manop.e7pi-g7pi | Serig.rossa manop.e7pi-g7pi | Serigraphie de la manette | Drehknopfserigraphie | Serigrafia mando | | | | | | 1 |
| 16 | 35877200 | Man. rossa p. 6x4.6 a o° ral3000 | Red knob p. 6x4.6 a o° ral3000 | Ma. rouge p. 6x4.6 a o° ral3000 | Drehknopf p. 6x4.6 a o° ral3000 | Mando rojo p. 6x4.6 a o° ral3000 | | | | | | 1 |
| 17 | 33170700 | Spia ar. 230v d.13 mm | Or. pilot light 230v d.13 mm | TÉ. lumineux orange 230v d.13 mm | Kontrol. 230v d.13 mm | Ind. lumin. naranja 230v d.13mm | | | | | | 1 |
| 18 | 31205000 | Int.generale/commut. e7pi-g7pi | Int.generale/commut. e7pi-g7pi | Comm. e7pi-g7pi | Umsc. e7pi-g7pi | Inte. general conmutador | | | | | | 1 |
| 19 | 31917000 | Pressostato e7pi-g7pi | Man. e7pi-g7pi | Pres. e7pi-g7pi | Druck. e7pi-g7pi | Pres. e7pi-g7pi | | | | | | 1 |
| 20 | 31856900 | Griglia scarico e7pi-g7pi-g7pd | Drain grid e7pi-g7pi-g7pd | Gr. vidange e7pi-g7pi-g7pd | Ablas. e7pi-g7pi-g7pd | Re. de descarga e7pi-g7pi-g7pd | | | | | | 1 |
| 21 | 31875600 | Man. a leva e7pi-g7pi-g7pd | Lever type ha. e7pi-g7pi-g7pd | Po. a levier e7pi-g7pi-g7pd | Oheb. e7pi-g7pi-g7pd | Pa. e7pi-g7pi-g7pd | | | | | | 1 |
| 22 | 31857200 | Gr. monoforo e7pi-g7pi-g7pd | Single-hole tap e7pi-g7pi-g7pd | Ro. mono e7pi-g7pi-g7pd | Einloch-hah e7pi-g7pi-g7pd | Grifo mon. e7pi-g7pi-g7pd | | | | | | 1 |
| 23 | 31205400 | Cop. pent. e7pi-g7pi-g7pd | Bo. pan lid e7pi-g7pi-g7pd | Cou. petite marmite e7pi-g7pi-g7pd | TÖpfch. e7pi-g7pi-g7pd | Tapa olla e7pi-g7pi-g7pd | | | | tapa olla e7pi-g7pi-g7pd | | 1 |
| 24 | 31954600 | Scaricatore aria e7pi-g7pi | 1/2 breather pipe | evacuation air 1/2 | luftablasser 1/2 | evacuador de aire 1/2 | | | | | | 1 |
| 25 | 31273900 | Rub. con imbuto e7pi-g7pi | Tap with fu. e7pi-g7pi | Ro. avec entonnoir e7pi-g7pi | Wass. mit trichter e7pi-g7pi | Grifo con em. e7pi-g7pi | | | | | | 1 |
| 26 | 31287500 | Tappo cromato e7pi-g7pi | chromium-plated plug e7pi-g7pi | Bouchon chrome e7pi-g7pi | Verchromte pfropfen e7pi-g7pi | Tapon cromado e7pi-g7pi | | | | | | 1 |
| 27 | 31990600 | Va. depressione e7pi-g7pi | 1/4 va. valve e7pi-g7pi | so. de depression 1/4 e7pi-g7pi | unterdr. 1/4 e7pi-g7pi | vÁ. de vacio 1/4 e7pi-g7pi | | | | | | 1 |
| 28 | 31990900 | Va. sicurezza 0,5 bar pentola ind. | Safety valve | Soupape de surete | Scherheitsventil | VÁlvula de seguridad | | | | | | 1 |
| 29 | 31954900 | Sifone portamanom.ro e7pi-g7pi | Gauge holder e7pi-g7pi | Siphon porte-manometre | Manometerheber-siphon | Sifón portamanómetro | | | | | | 1 |
| 30 | 31875700 | Manometro da 1/4' Ø 50 | 1/4' Ø 50 bar gauge | Manometre 1/4' Ø 50 | Manometer 1/4' Ø 50 | Manometro 1/4' Ø 50 | | | | | | 1 |
| 31 | 31857400 | Gruppo sicurezza 3/4 e7pi-g7pi | Support | Support | Halter | | | | | | | 1 |
| 32 | 32848400 | Griglia camino gl/lx mobile | Chimney grill gl/lx | Grille hotte gl/lx | Grillkamin gl/lx | Rejilla chimenea gl/lx | | | | | | 2 |