

HOOD TYPE MACHINE

INSULATED DOUBLE WALLED CAPOTE
ELECTRONIC SWITCHES VERSION

TYPE: 37E

Accessories

CAPOTE "LIFT" LIFTING SYSTEM

BOOSTER PUMP

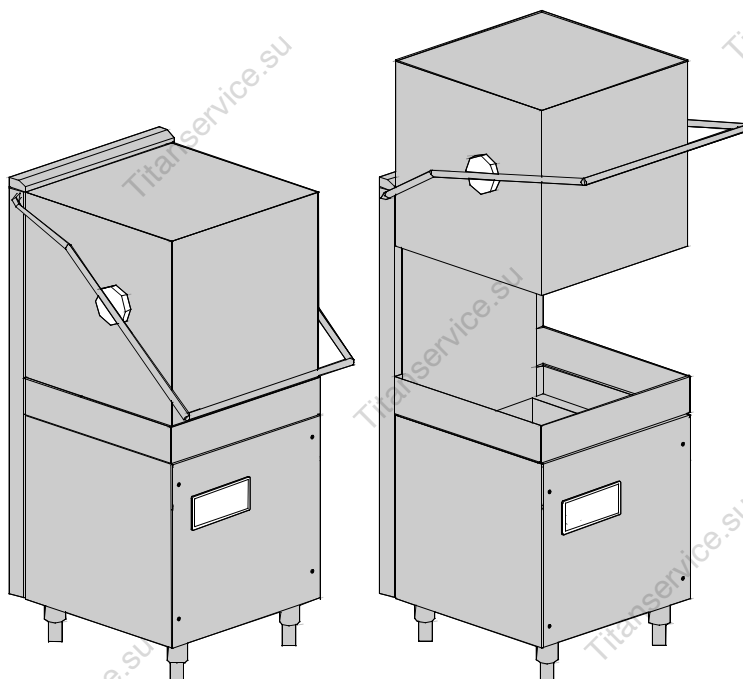
DVGW

WATER SOFTNER

DETERGENT DISPENSER

DRAIN PUMP

Spare parts manual



S/N:

Valid from:..01/2003

Rev.: 0.0

1. Spare parts

General body parts.....	7
Closing panelig.....	9
Capote LIFT lifting system.....	11
Control electric components.....	13
Control electric components.....	15
Solenoid valve group	17
Solenoid valve group	19
Booster pump.....	21
DVGW	23
Water softner group.....	25
Shining product dosing device group .	27
Boiler group	29
3 ways derivation.....	31
Derivation group	33
Wash pump group	35
Dosing device group	37

Dosing device group39

Drain pump group.....41

Pressure switch group with air trap ...43

Turret group with rotating arms45

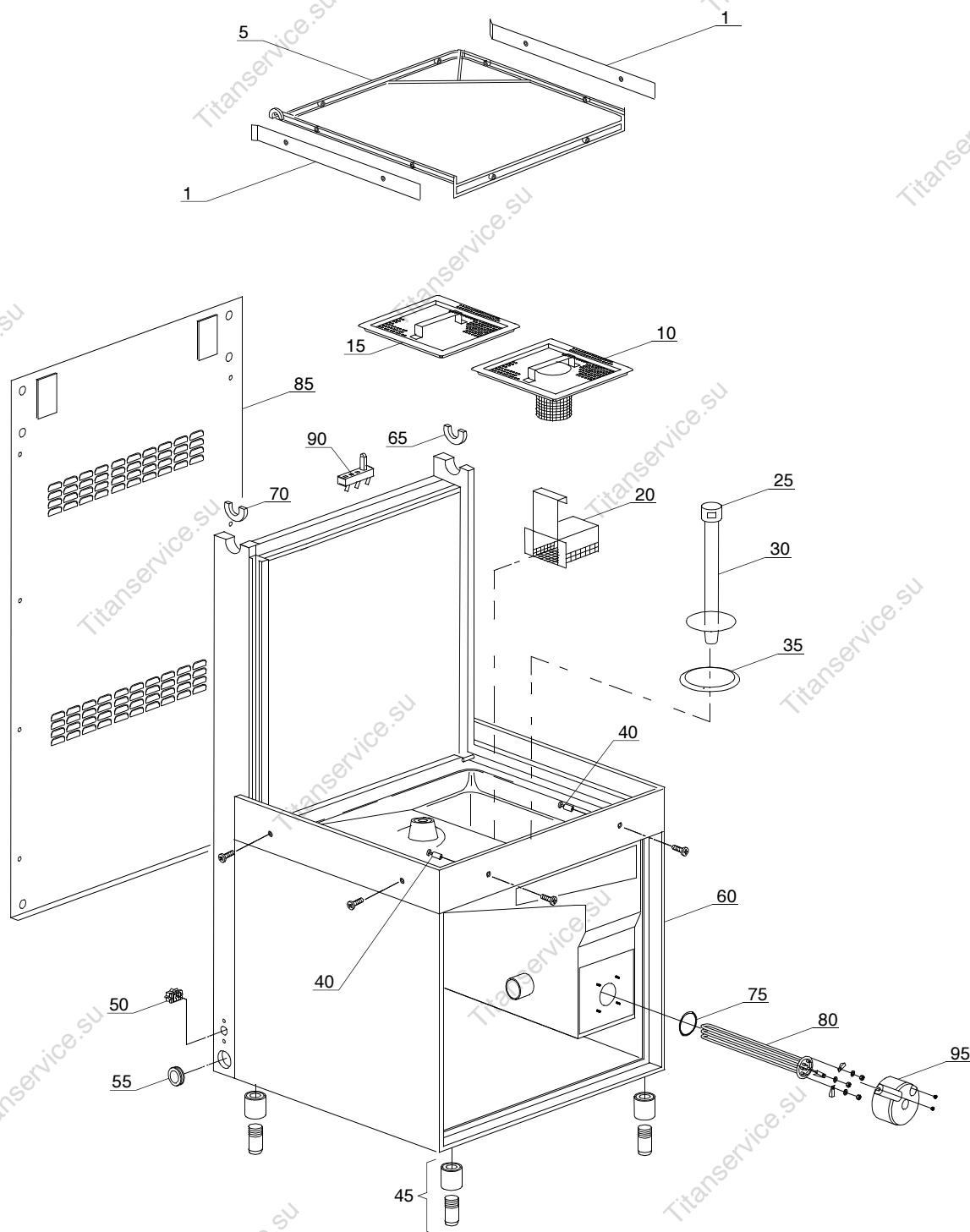
1.1 Voltage codes

Voltage code	Voltage
A	3/N/PE~400/230V 50Hz
B	~250V 16A 50Hz
C	3/N/PE~380/220V 50Hz
D	3/PE~200V 50-60Hz
F	2/PE 220-240V 50Hz
G	3/N/PE~415/240V 50Hz
H	3/PE~230V 50Hz
I	3/PE~220V 60Hz
J	3/PE~380 50Hz
K	3/PE~400V 50Hz
L	3/PE~415V 50Hz
M	3/PE~440V 60Hz
N	3/PE~460V 60Hz
O	3/PE~480V 60Hz
P	1/N/PE~220-240V 50Hz
R	2/PE~220-230V 60Hz
S	3/N/PE~400/230V 50Hz
T	3/PE~230V 60Hz

1.2 Product codes

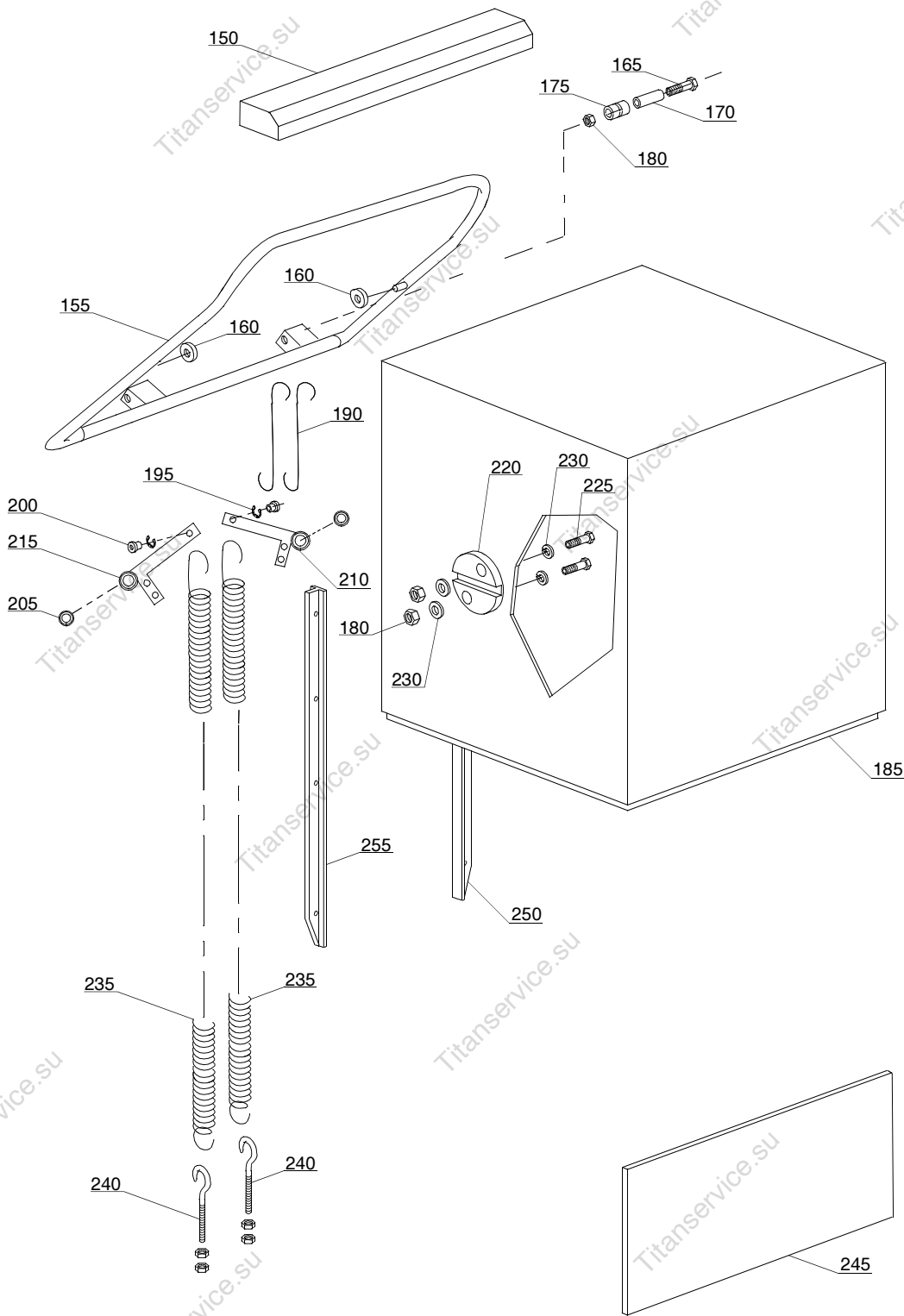
Product code	Full name
Model codes	
is	INSULATED DOUBLE WALLED CAPOTE
e	ELECTRONIC SWITCHES VERSION
Type codes	
37E	37E
Accessory codes	
lift	CAPOTE "LIFT" LIFTING SYSTEM
pap	BOOSTER PUMP
dvgw	DVGW
d	WATER SOFTNER
dde	DETERGENT DISPENSER
ps	DRAIN PUMP

01_004_e

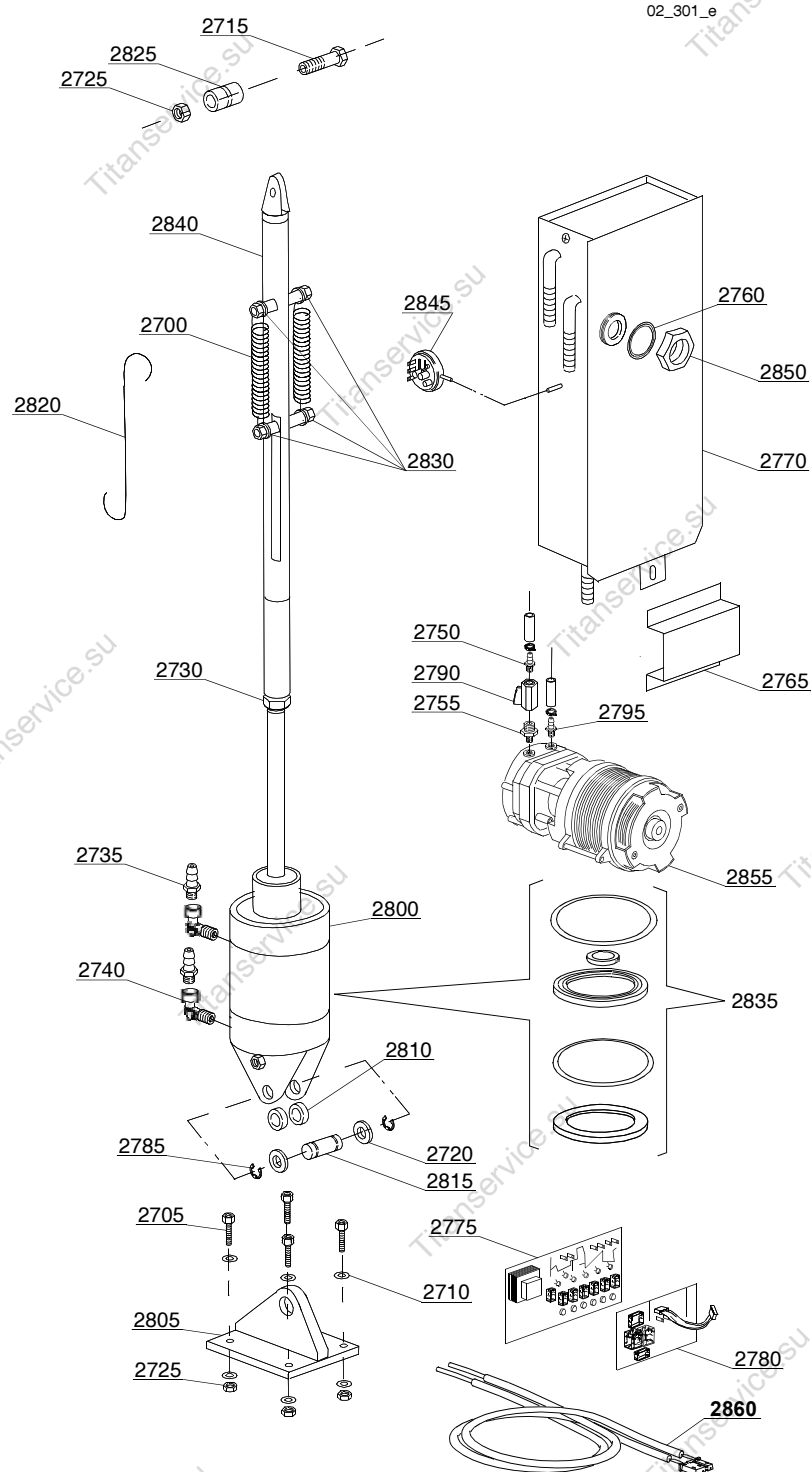


[illegible]

02_202_e

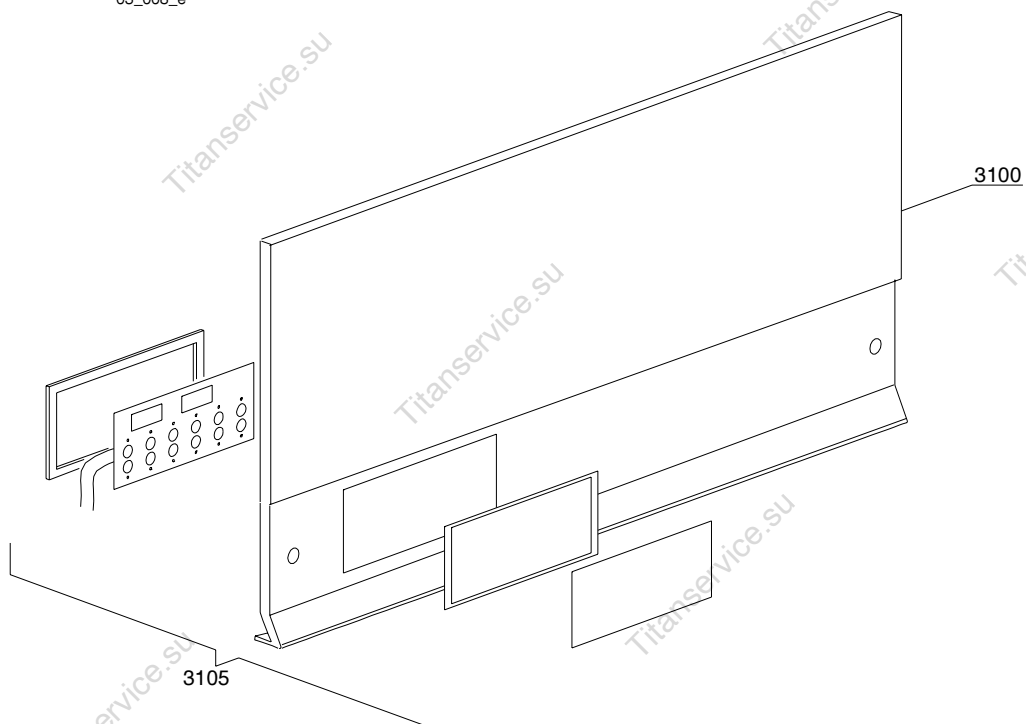


ID	P-code	Model	Type	Accessory	Voltage	Description
MODULE: Closing panelig						
150	11600913		37E			Spoiler
155	11600910		37E			Grip
160	89919		37E			Wheel for basket
165	11214		37E			Screw
170	11600015		37E			Roller spacer
175	11600014		37E			Roller tie rod
180	11718		37E			M8 stainless steel self-locking nut
185	11600902		37E			Capote
190	11600013		37E			Union grip/levers tie rod
195	11823		37E			O10 stainless steel snap ring
200	11600038		37E			Spring bush
205	10800010		37E			Lever bearing
210	11600026		37E			Right lever
215	11600027		37E			Left lever
220	11600030		37E			Capote movement cam
225	11110		37E			M8x35 TE stainless steel screw
230	13301		37E			Gasket
235	70302		37E			Back spring
240	10800210		37E			Tie rod screw with hook
245	11600616		37E			Lower door panel
250	11600028		37E			Capote right sliding guide
255	11600029		37E			Capote left sliding guide

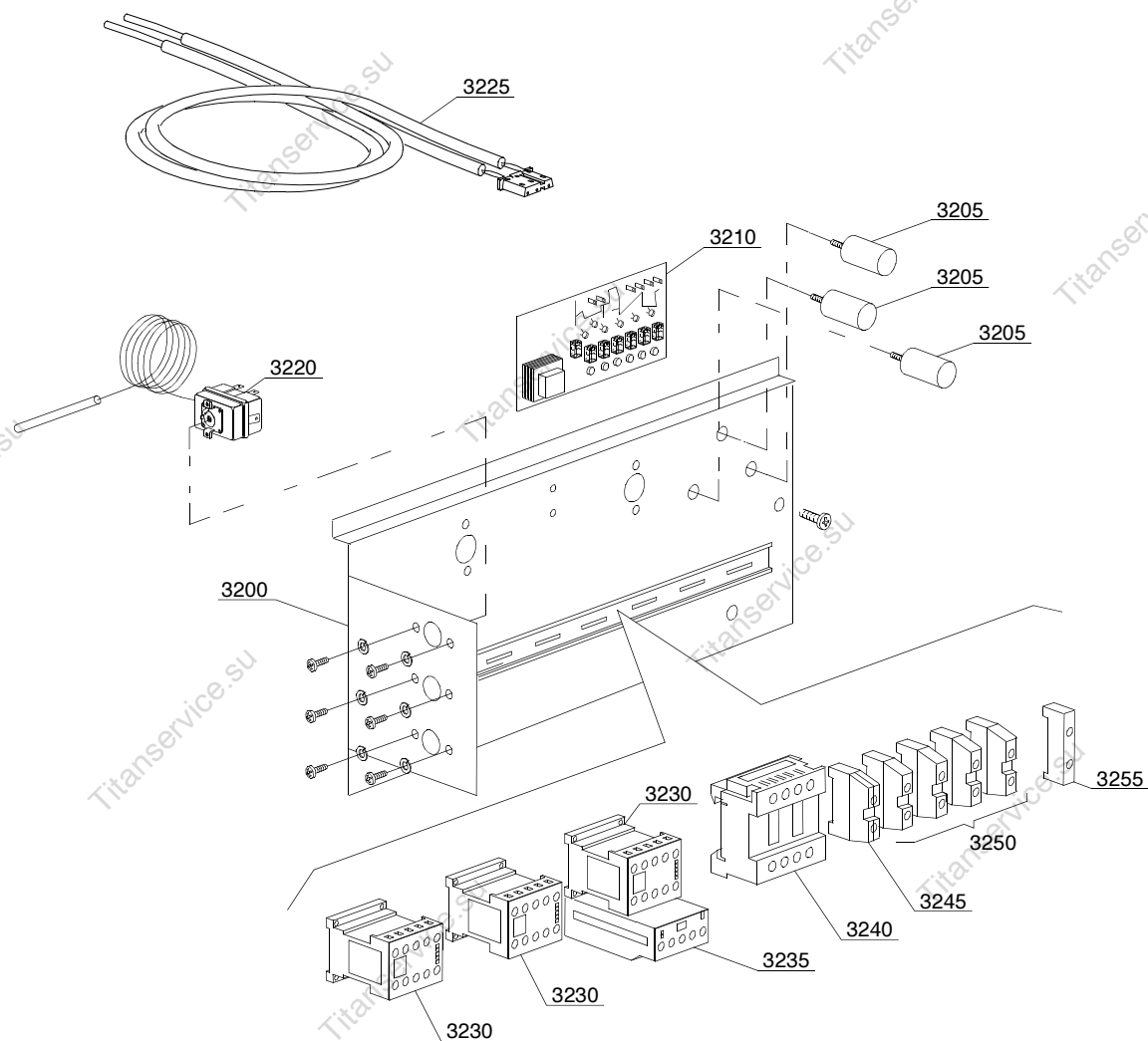


[illegible]

03_008_e



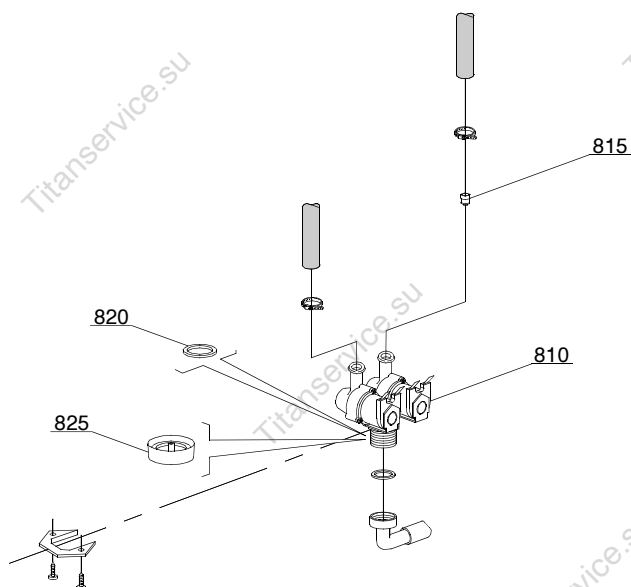
ID	P-code	Model	Type	Accessory	Voltage	Description
MODULE:Control electric components						
3100	11600923		37E			Control panel
3105	50570		37E	dp		Complet membrane key-driver



04_006_e

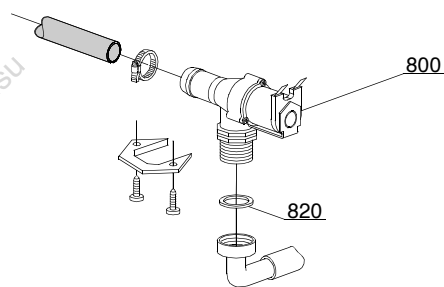
Spare parts

[illegible]



05_003_e

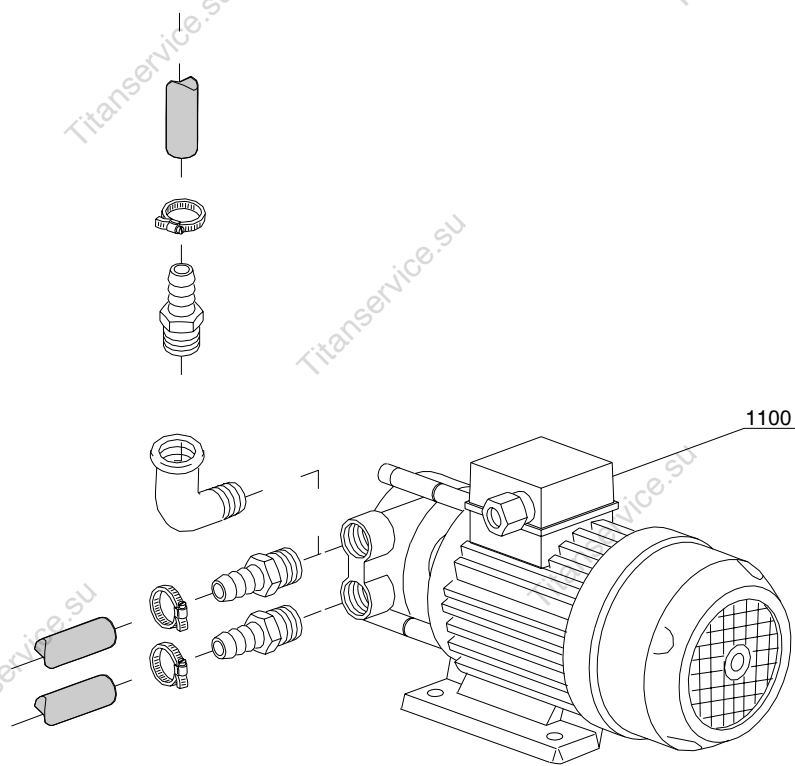
ID	P-code	Model	Type	Accessory	Voltage	Description
MODULE:Solenoid valve group						
810	15098		37E	cr,ws		Double solenoid valve - O10
815	15115		37E	cr,ws		Green pression solenoid valve
820	N.C.		37E	cr,ws		Pression reducing valve



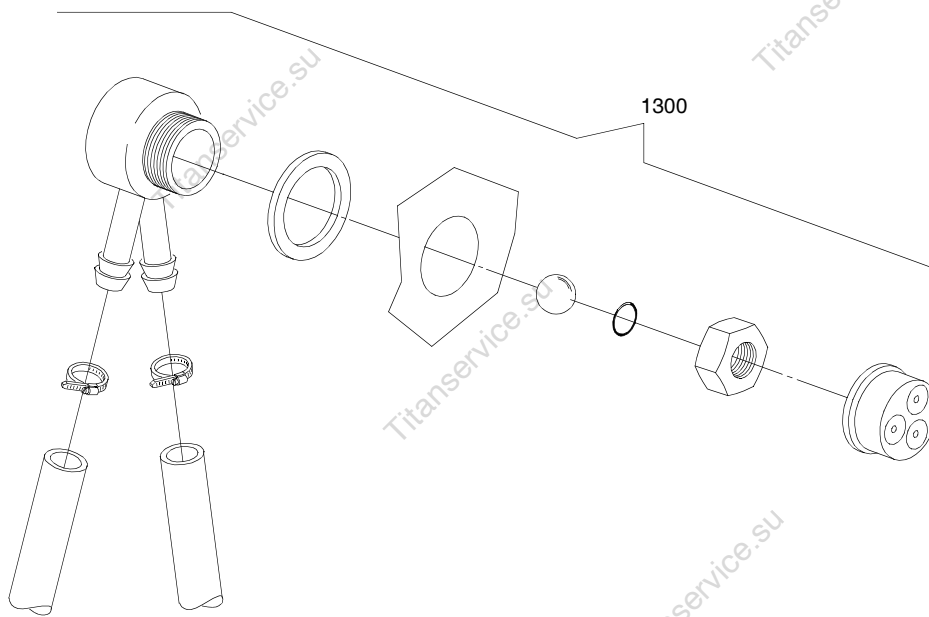
05_005_e

ID	P-code	Model	Type	Accessory	Voltage	Description
MODULE:Solenoid valve group						
800	30001000		37E			Single solenoid valve
820	N.C.		37E			Pression reducing valve

07_002_e



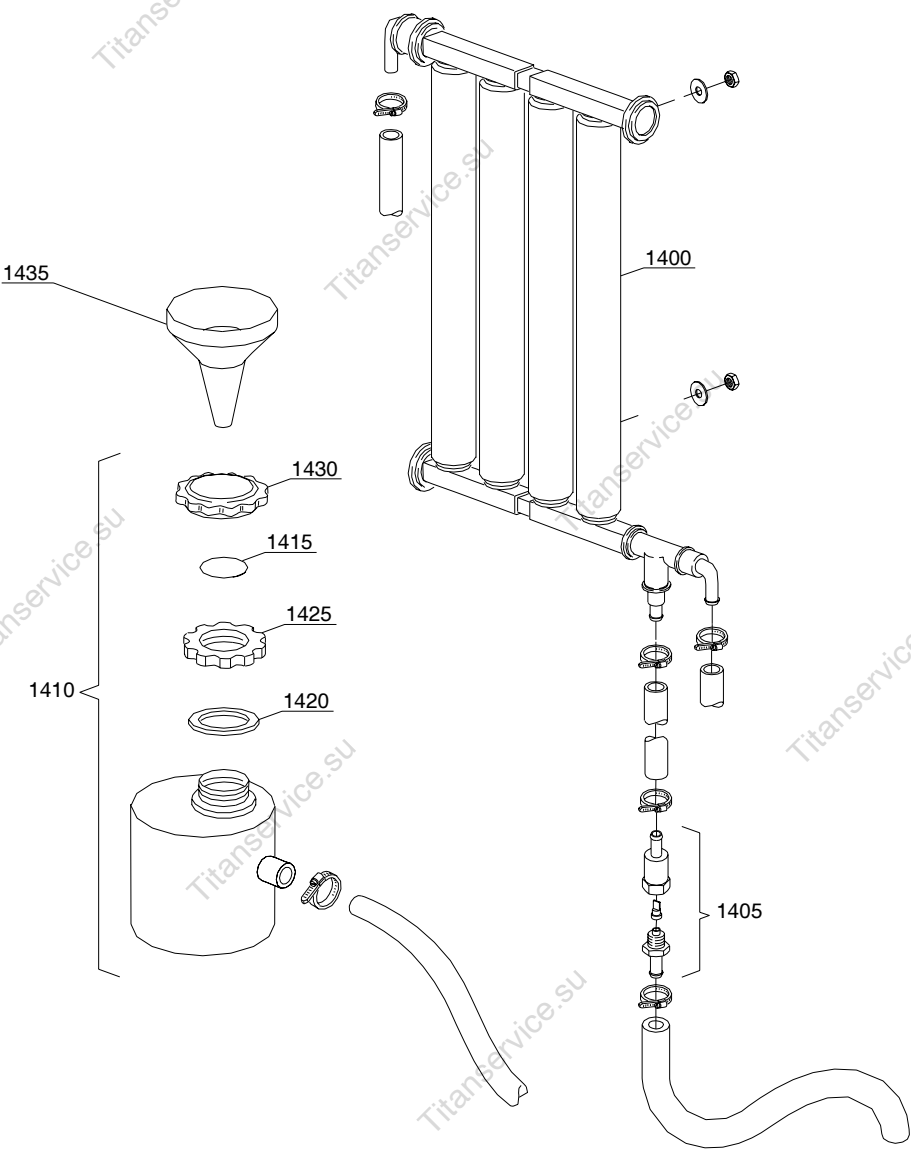
ID	P-code	Model	Type	Accessory	Voltage	Description
MODULE:Booster pump						
1100	15100		37E	bp		Booster pump



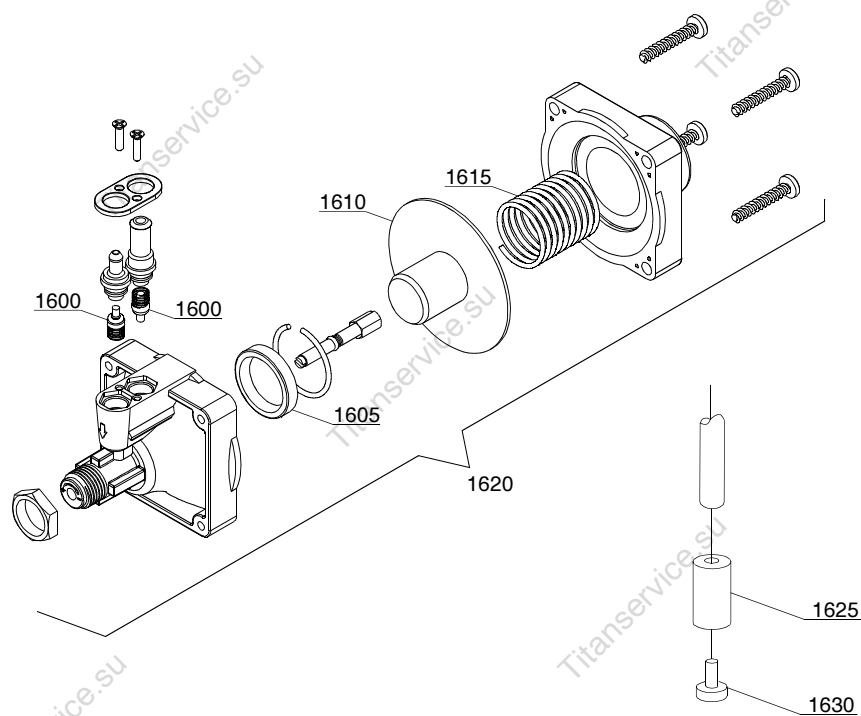
08_005_e

ID	P-code	Model	Type	Accessory	Voltage	Description
MODULE:DVGW						
1300	999900006		37E	dvgw		DVGW assembly

09_001_e

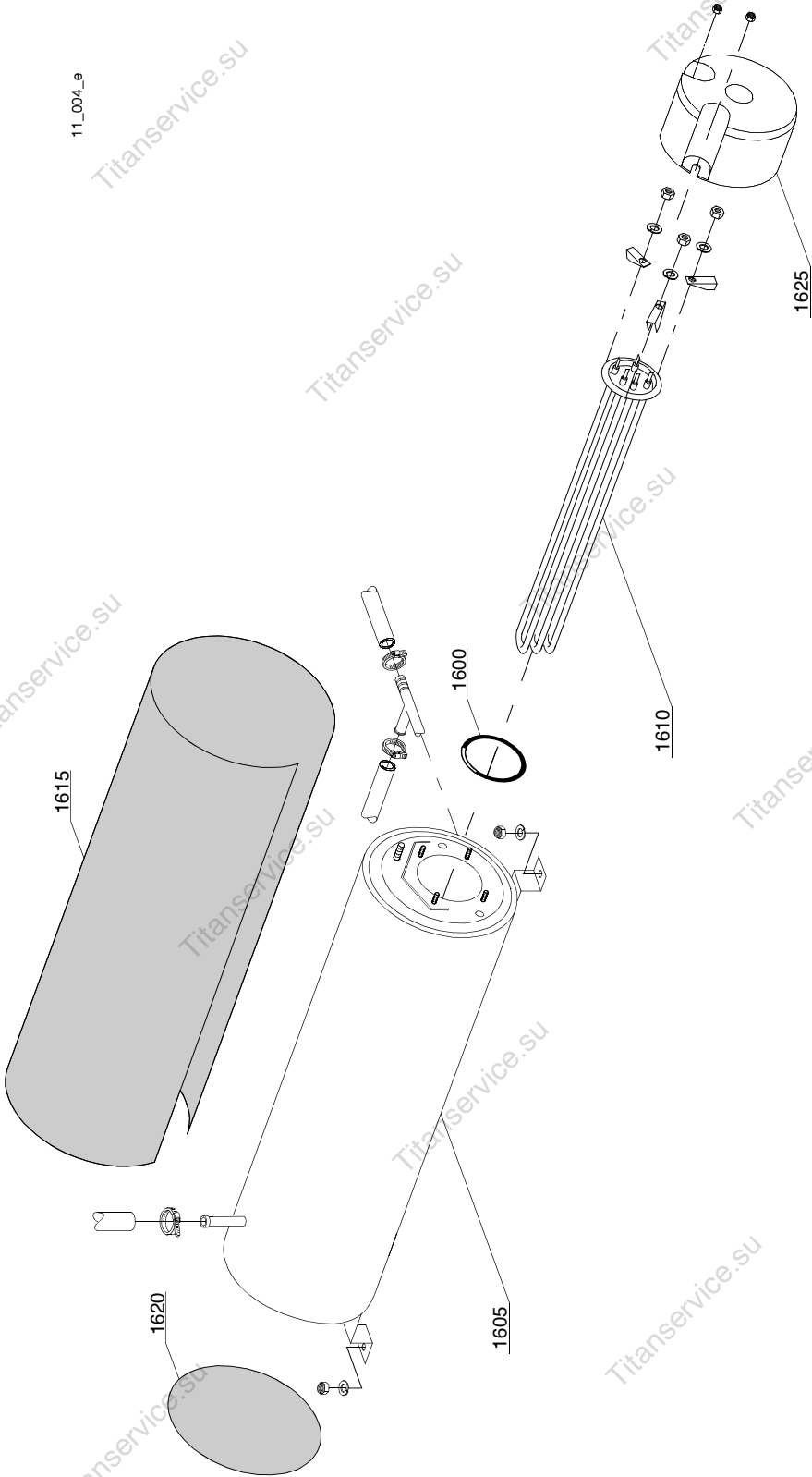


ID	P-code	Model	Type	Accessory	Voltage	Description
MODULE: Water softner group						
1400	16066		37E	ws		4 elements water softner
1405	16070		37E	ws		Nonreturn valve
1410	16065		37E	ws		Salt container
1415	16067/A		37E	ws		OR gasket
1420	16067/B		37E	ws		Gasket
1425	16067/C		37E	ws		Ring nut
1430	16067/D		37E	ws		Plug
1435	16082		37E	ws		Funnel

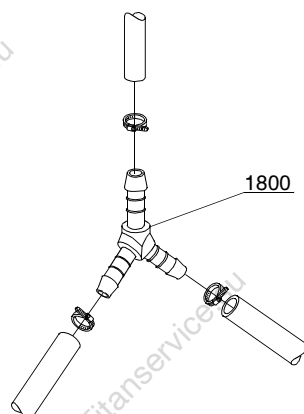


10_003_e

ID	P-code	Model	Type	Accessory	Voltage	Description
MODULE:Shining product dosing device group						
1600	10805		37E			Tecnopro dosing valve
1605	10806		37E			O22 gasket
1610	10807		37E			Membrane
1615	10808		37E			Spring
1620	10599999		37E			Shining product dosing device
1625	12525		37E			Counter-weight
1630	15058		37E			Small filter



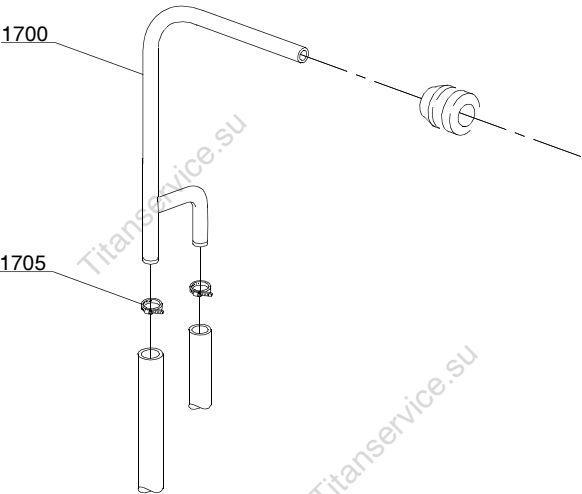
ID	P-code	Model	Type	Accessory	Voltage	Description
MODULE:Boiler group						
1600	13015		37E			6225 OR 160 NBR gasket
1605	22002		37E			Boiler
1610	30001011		37E			9KW heating element
1610	30001011/A		37E			12KW heating element
1610	30001011/C		37E			9KW heating element (440Vac)
1615	30002030		37E			Insulating boiler
1620	75205		37E			O160 bottom
1625	75311		37E			Heating element guard



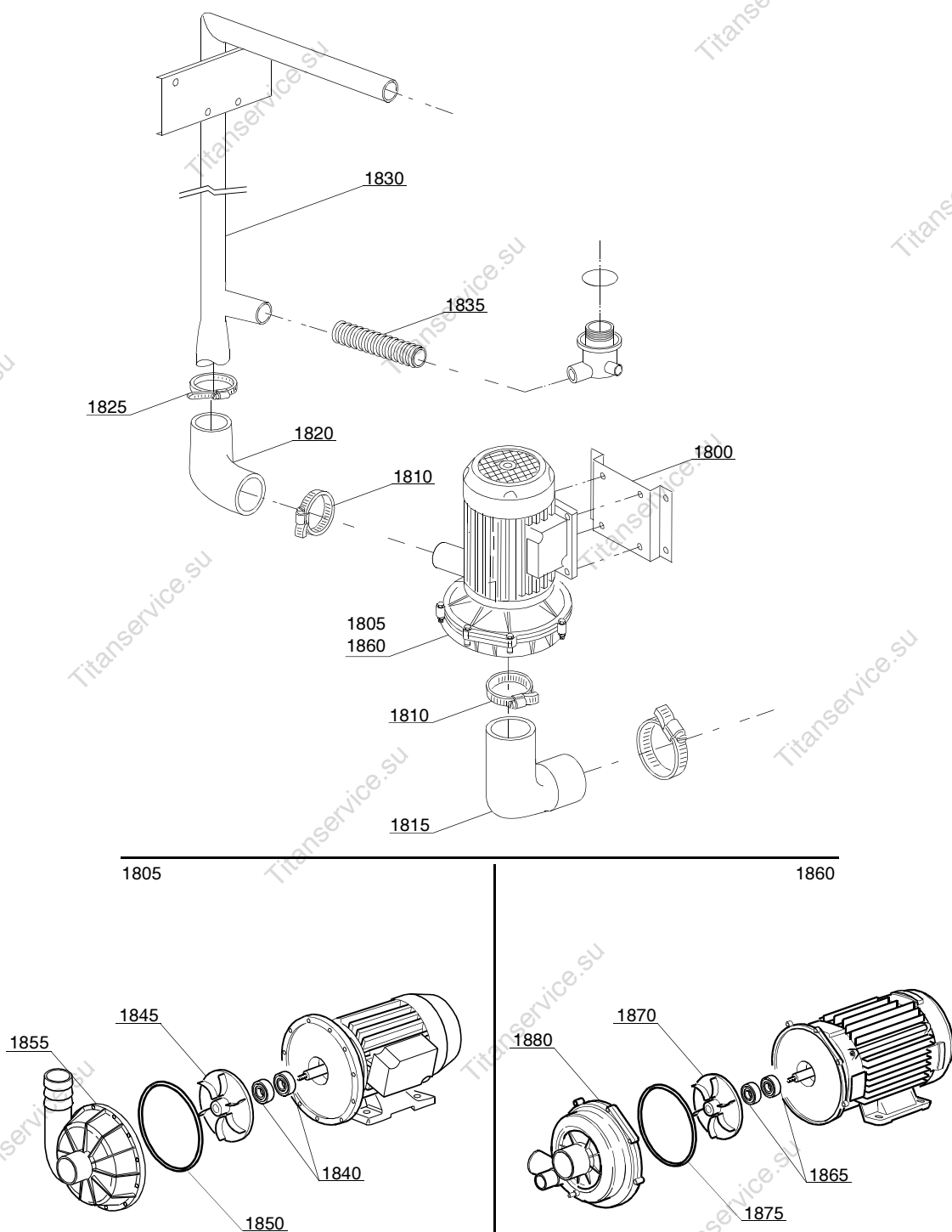
12_003_e

ID	P-code	Model	Type	Accessory	Voltage	Description
MODULE:3 ways derivation						
1800	540090		37E	ws		O10 mm plastic 3 ways derivation

12_007_e

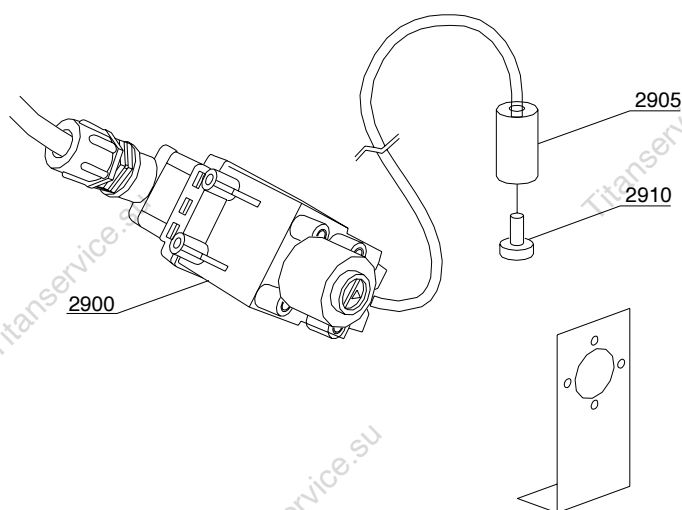
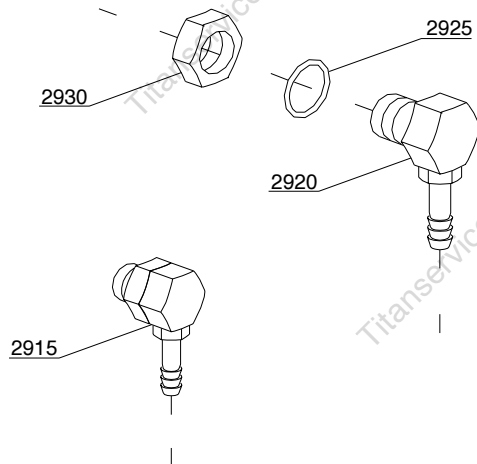


ID	P-code	Model	Type	Accessory	Voltage	Description
MODULE:Derivation group						
1700	15045/B		37E			3 ways derivation
1705	11807		37E			12/22 clamp

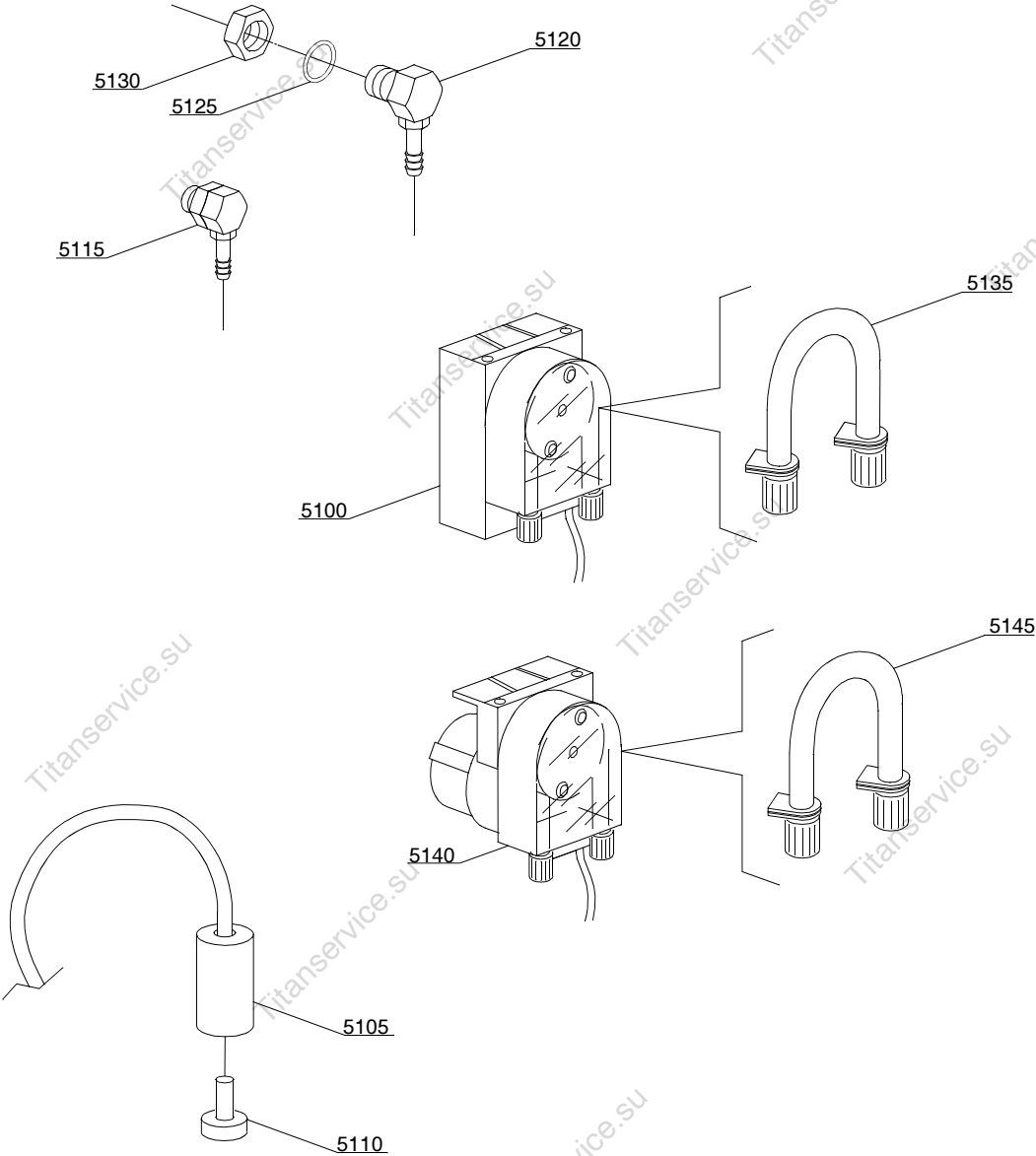


ID	P-code	Model	Type	Accessory	Voltage	Description
MODULE:Wash pump group						
1800	11600623		37E			Pump support hanger
1805	10300057/A		37E			1,5Hp pump
1810	11824		37E			50/70 clamp
1815	3002020		37E			Elbow pipe coupling
1820	11600000		37E			Wash ramp delivery side pipe coupling
1825	11809		37E			30/45 clamp
1830	11600022		37E			Wash ramp
1835	11600048		37E			Pipe coupling
1840	15080		37E			Rotating seals
1845	10209807		37E			Pump rotor (pump 1,5KW)
1850	10200290		37E			OR 1225 gasket
1855	10200222		37E			Scroll

14_002_e



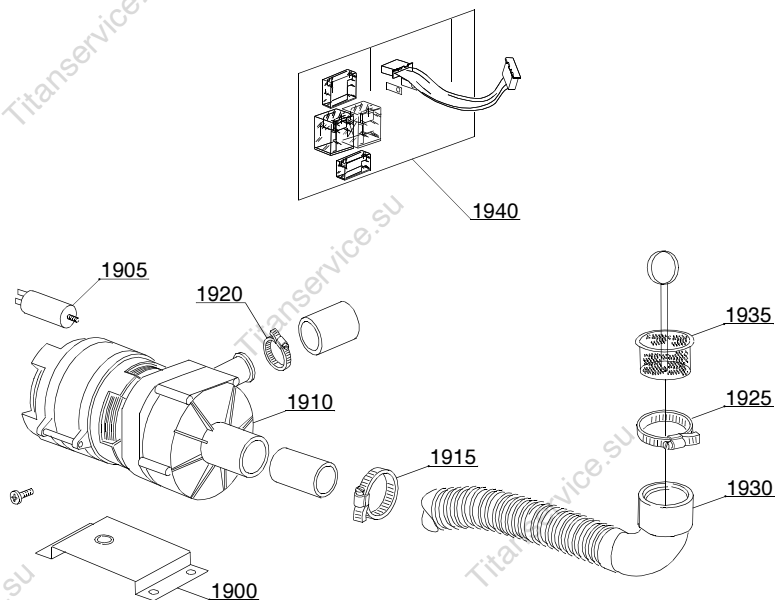
ID	P-code	Model	Type	Accessory	Voltage	Description
MODULE:Dosing device group						
2900	15108/L		37E	dd		Lang dosing device
2905	12525		37E	dd		Counter-weight
2910	15058		37E	dd		Small filter
2915	15123		37E	dd		Compleat plastic injector
2920	15148		37E	dd		Steel injector
2925	15159		37E	dd		OR gasket
2930	10200205		37E	dd		M12x1 stainless steel nut



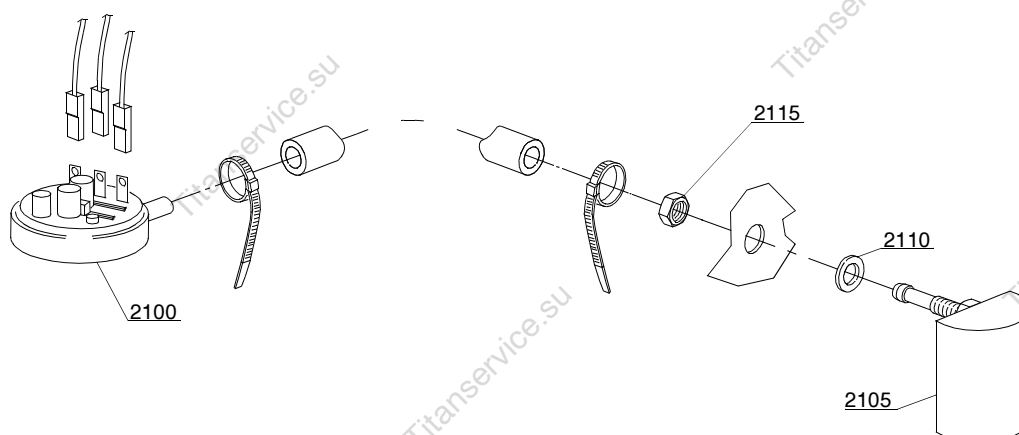
14_004_e

ID	P-code	Model	Type	Accessory	Voltage	Description
MODULE:Dosing device group						
5100	15985		37E	dd		Seko dosing device
5105	12525		37E	dd		Counter-weight
5110	15058		37E	dd		Small filter
5115	15123		37E	dd		Compleat plastic injector
5120	15148		37E	dd		Steel injector
5125	15159		37E	dd		OR gasket
5130	10200205		37E	dd		M12x1 stainless steel nut
5135	15185		37E	dd		Seko thermoplastic pipe
5140	15985		37E	dd		Germac dosing device
5145	15108/E		37E	dd		Germac thermoplastic pipe

15_003_e

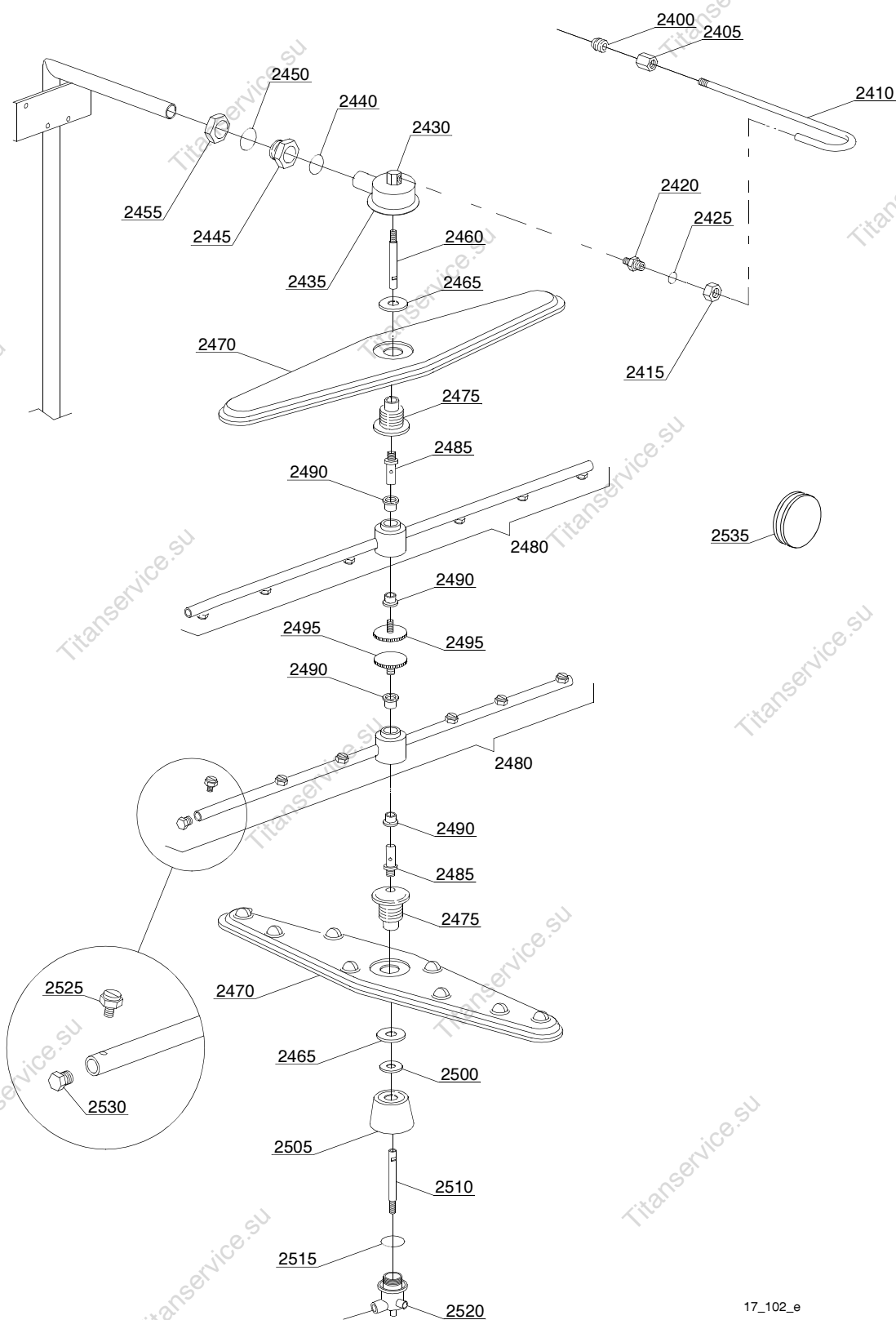


ID	P-code	Model	Type	Accessory	Voltage	Description
MODULE:Drain pump group						
1900	440122		37E	dp		Pump support
1905	10702		37E	dp		5 Uf Condenser
1910	10501/A		37E	dp		0,10 Hp wash pump
1915	11806		37E	dp		25/40 clamp
1920	11836		37E	dp		20/32 clamp
1925	11809		37E	dp		30/45 clamp
1930	15131		37E	dp		Suction pipe
1935	10200039		37E	dp		Flow drain filter
1940	50559		37E	dp		Electronic timer for Exp - Ps card
1945	11600050		37E	dp		Suction pipe



16_001_e

ID	P-code	Model	Type	Accessory	Voltage	Description
MODULE:Pressure switch group with air trap						
2100	88110		37E			260-30 pressure switch
2105	10911/B		37E			Air trap assembly
2110	13301		37E			Gasket
2115	11702		37E			M8 stainless steel nut



17_102_e

Spare parts

[illegible]