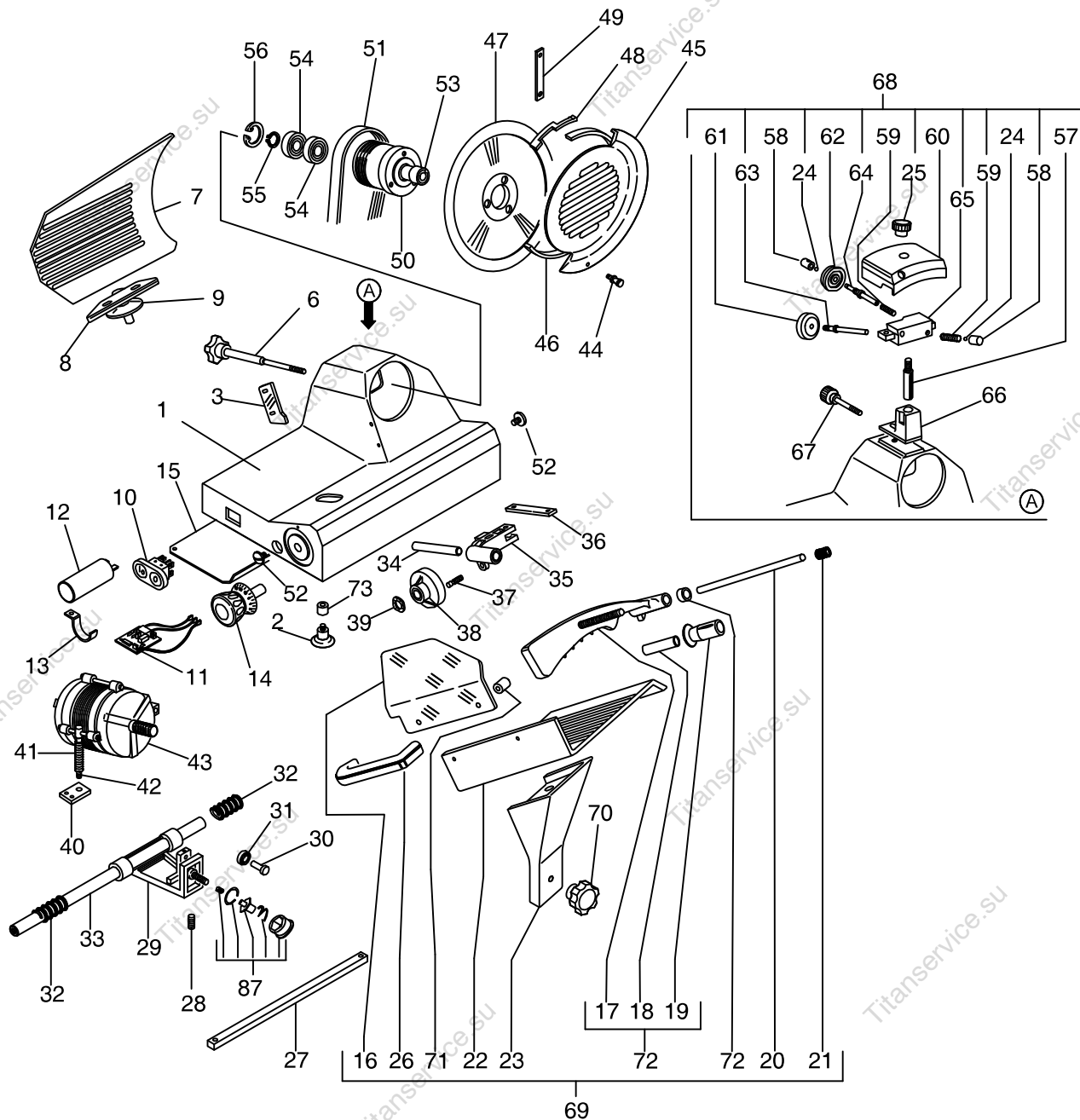


Rif./Ref.	Codice/Code	Sigla /Features	Descrizione/Description	
1	CO3930	(H220)	Base	
1	CO3931	(H250-275-HS250)	Base	
+ 2	CO3908		Foot	
3	CO3912	(H220)	Protection	
3	CO3932	(H-HS250)	Protection	
3	CO3933	(H275)	Protection	
+ 4	CO3443		Deburring wheel	
+ 5	CO3444		Grinding wheel	
+ 6	CO4135	(H220)	Tie rod	
+ 6	CO3911	(H250-275-HS250)	Tie rod	
7	CO3936	(H220)	Sail	
7	CO3937	(H-HS250)	Sail	
7	CO3938	(H275)	Sail	
8	CO3939	(H220)	Support	
8	CO3940	(H250-275-HS250)	Support	
9	CO3941		Ring	
+ 10	CO3914		Push button	
+ 11	CO3913	230V/1Ph/50-60Hz	Electronic card	
12	CO3942	8µF	Condenser	
13	CO3943		Bracket	
14	CO3919		Knob	
15	CO3944	(H220)	Bottom	
15	CO3945	(H250-275-HS250)	Bottom	
16	CO3905	(H220)	Protection	
16	CO4688	(H250-275-HS250)	Protection	
17	CO3906	(H220)	Ram	
17	CO3947	(H250-275-HS250)	Ram	
18	CO3948		Spacer	
+ 19	CO3907		Handle	
20	CO3949	(H220)	Rod	
20	CO3950	(H250-275-HS250)	Rod	
21	CO3951		Bush	

Rif./Ref.	Codice/Code	Sigla /Features	Descrizione/Description	
22	CO3952	(H220)	Flat	
22	CO3953	(H-HS250)	Flat	
22	CO3954	(H275)	Flat	
23	CO3955	(H220-250-HS250)	Support	
23	CO3956	(H275)	Support	
26	CO3959	(H250-275-HS250)	Handle	
27	CO3960	(H220)	Bar	
27	CO3961	(H250-275-HS250)	Bar	
28	CO3962	M8	Grub screw	
29	CO3963	(H220-250-275)	Support	
29	CO4139	(HS250)	Support	
30	CO3964		Pivot	
31	CO4680	626 ZZ	Bearing	
32	CO3965		Spring	
33	CO3966	(H220)	Shaft	
33	CO3967	(H250-275-HS250)	Shaft	
34	CO3968		Rod	
35	CO3969		Support	
36	CO3970		Plate	
37	CO3971		Pivot	
38	CO3904		Cam	
39	CO3972		Washer	
40	CO3973		Plate	
41	CO3974		Spring	
42	CO3975		Tie rod	
43	CO4141	230V/1Ph/50-60Hz (H220)	Motor	
43	CO3902	01/01/02 f.p.(*) (H220)	Motor	
43	CO4142	230V/1Ph/50-60Hz (H250-275-HS250)	Motor	
43	CO3976	01/01/02 f.p.(*)(H250-275-HS250)	Motor	
44	CO3977	(H220)	Pivot	
44	CO3978	(H250-275-HS250)	Pivot	
45	CO3909	CE norms (H220)	Blade cover	

Rif./Ref.	Codice/Code	Sigla /Features	Descrizione/Description	
45	CO3929	CE norms (H-HS250)	Blade cover	
45	CO3979	CE norms (H275)	Blade cover	
46	CO3980	CE norms (H220)	Ring	
46	CO3981	CE norms (H-HS250)	Ring	
46	CO3982	CE norms (H275)	Ring	
47	CO3910	(H220)	Blade	
47	CO3921	(H-HS250)	Blade	
47	CO3983	(H275)	Blade	
48	CO3984	CE norms (H220)	Protection	
48	CO3985	CE norms (H-HS250)	Protection	
48	CO3986	CE norms (H275)	Protection	
49	CO3987	CE norms (H220)	Plate	
49	CO3988	CE norms (H-HS250)	Plate	
49	CO3989	CE norms (H275)	Plate	
50	CO3915	(H220)	Pulley	
50	CO3990	(H250-275-HS250)	Pulley	
+	51	CO3903	TB2.34 295x8 (H220)	Belt
+	51	CO3918	TB2.34 310x8 (H250-275-HS250)	Belt
	52	CO3991		Screw
	53	CO3992	(H220)	Pivot
	53	CO3993	(H250-275-HS250)	Pivot
	54	SL2472	6202 ZZ	Bearing
	55	SL2471	ø15	Seeger
	56	CO3254	ø35	Seeger
	57	CO4553	(H220-250-HS250)	Pivot
	57	CO3995	(H275)	Pivot
	58	CO3996		Wheel pusher
	59	CO3997		Spring
	60	CO4554	(H220-250-HS250)	Covering
	60	CO3998	(H275)	Covering
+	61	CO3901		Grinding wheel
+	62	CO3900		Deburring wheel

Rif./Ref.	Codice/Code	Sigla /Features	Descrizione/Description	
63	CO3999		Pivot	
64	CO4000		Pivot	
65	CO4001		Support	
66	CO4555		Support	
67	CO4003		Knob	
68	CO4499	Assembly (H220-250-HS250)	Tool grinder	
68	CO3926	Assembly (H275)	Tool grinder	
69	CO4124	Assembly (H220)	Flat	
69	CO4125	Assembly (H-HS250)	Flat	
69	CO4126	Assembly (H275)	Flat	
70	CO4053	(HS250)	Knob	
72	CO3906	Assembly (H220)	Ram	
72	CO3947	Assembly (H250-275-HS250)	Ram	
79	CO3196	Assembly (H220-250)	Tool grinder	
79	CO4765	Assembly (H275)	Tool grinder	
80	CO3902	230V/1Ph/50-60Hz (H220)	Motor	
80	CO3976	230V/1Ph/50-60Hz (H250-275)	Motor	
81	CO2877		Push button	
82	CO3881		Protection	
84	CO2942		Knob	
85	CO0385	(H220)	Sail	
85	CO0263	(H250)	Sail	
85	CO0386	(H275)	Sail	
86	CO3866	(H220)	Blade cover	
86	CO4770	(H250)	Blade cover	
86	CO4766	(H275)	Blade cover	
87	CO5353	(HS250)	Kit fence plate safety lock	



Without CE norms

