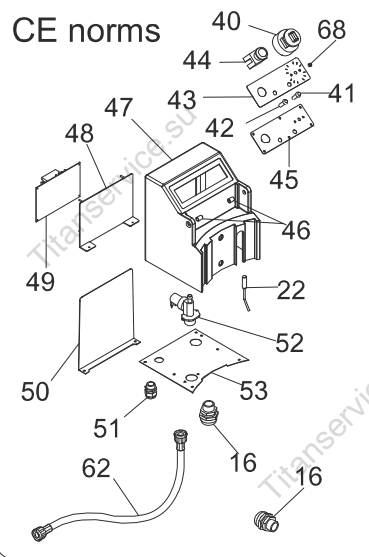


Rif./Ref.	Codice/Code	Sigla /Features	Descrizione/Description	
1	35V6381		Bracket	
+ 2	3600310		Magnet	
3	SL3156		Cover	
4	36D9550		Bush	
5	36M5090		Handle	
+ 6	SL3317		Gasket	
7	SA1130	Assembly	Emery cloth	
8	SL3300		Gasket	
9	SL3199		Bottom	
10	36D9660		Leaper	
11	33Q6210	1/4" M-F	Nipple	
12	33Q6040	L 90° M-F	Nipple	
13	33Q5180	1/4" M ø12	Cluch	
14	36G2040		Pivot	
15	SL3143		Housing	
16	32D1090	PG21	Sheathing clamp	
+ 17	37Q7860		Gasket	
18	36C0011		Frame	
19	SL3197		Door	
20	SA1093	Assembly	Handle	
+ 21	3600160		Magnet	
+ 22	32W3240	CE norms	Microswitch	
23	SL3231		Tap	
24	SL3198		Shaft	
25	SL3006	ø35xø62x10	Oil seal	
26	SL3191	6305 2RS	Bearing	
27	SL3217		Spacer	
28	SL3195		Pulley	
+ 29	SL3159	Poly V-723 J16	Belt	
30	SL3181		Flange	
31	SL3155		Pulley	
32	SL0089	400V/3Ph/50Hz	Motor	

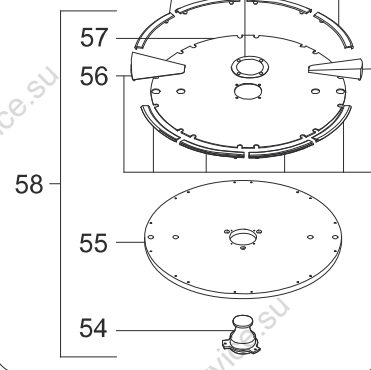
Rif./Ref.	Codice/Code	Sigla /Features	Descrizione/Description	
32	SL3270	230V/1Ph/50Hz	Motor	
33	SL3154	ø90 (PPN25)	Tube	
33	35X1150	ø90 (PPF25)	Tube	
34	SL2720	ø100-ø50 (PPN25)	Reduction	
35	SL2719	L 90° ø50 (PPN25)	Bend	
36	SL3192		Bracket	
37	SL3368	(PPN25)	Bottom	
37	SL3224	(PPF25)	Bottom	
38	SL3223	(PPN25)	Foot	
39	ACCB	(PPF25)	Frame	
+	40	SA1087	Timer	
+	41	32W2970	230V 2W green	Lamp
+	42	32W3280	230V 2W white	Lamp
	43	SL3705	Label	
	43	SL3530	01/12/08 f.p.(*)	Label
+	44	SA1088	Unstable	Push button
	45	SL3693	Panel	
	45	30A3620	01/12/08 f.p.(*)	Panel
	46	36D7310	Bush	
	47	36Z0690	Box	
	48	SL2785	Plate	
+	49	SL2921	Electronic card	
	50	35M8840	Covering	
	51	SL0893	PG13,5	Cable clamp
+	52	33D1371	230V/50-60Hz 3/4" M	Electro-valve
	53	SL2939	Plate	
	54	36M5250	Knob	
	55	SL3149	Disk	
+	56	SA3650	Plastic (PTB)	Disk set
	57	SL3151		Emery cloth
	58	ACPTB	Assembly	Potato disk
	59	SA3660	Assembly	Cover

Rif./Ref.	Codice/Code	Sigla / Features	Descrizione/Description	
60	SA1074	Assembly	Door	
61	SL2349		Pivot	
62	33M0010	3/4" F-F	Tube	
63	SL1622	1/4" M-F	Cock	
64	SL2904		Bracket	
65	SA1092	Assembly	Timer	
66	SL2745	ø50÷ø70 (PPN25)	Clip	
67	3140460	ø88÷ø96	Clip	
68	SL0772	V-8-S	V-ring	
69	SL3201	ø62	Seeger	

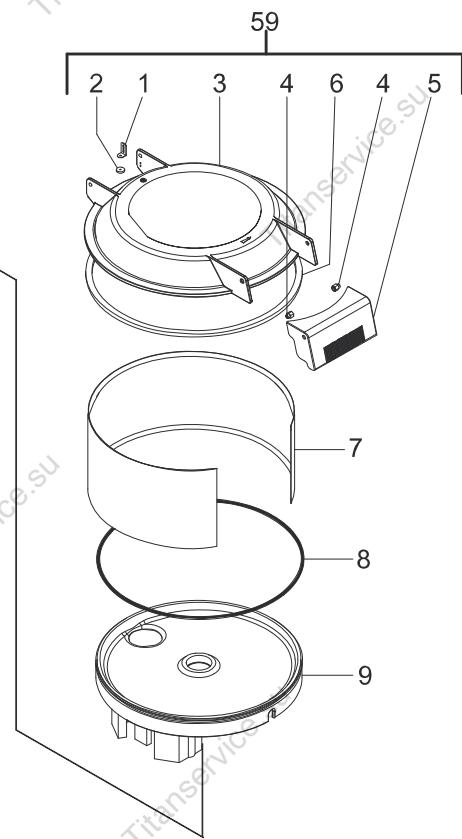
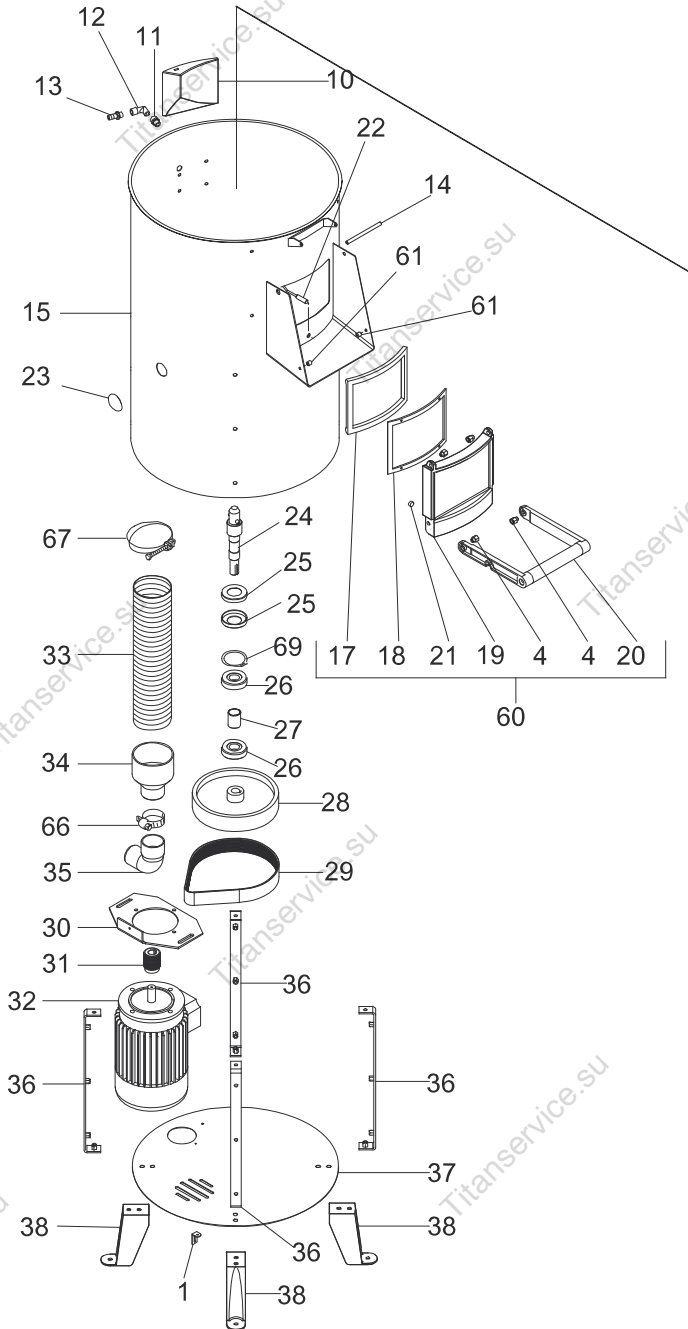
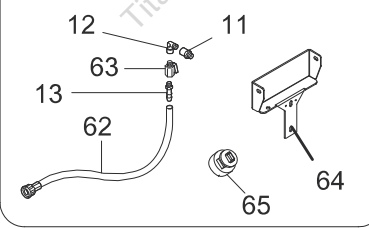
CE norms



ACPTB



without CE norms



ACCB

