



GB 1540

LIST OF THE EXPLODED VIEWS



SHELL ASSY

COOLING SYSTEM

EVAPORATOR

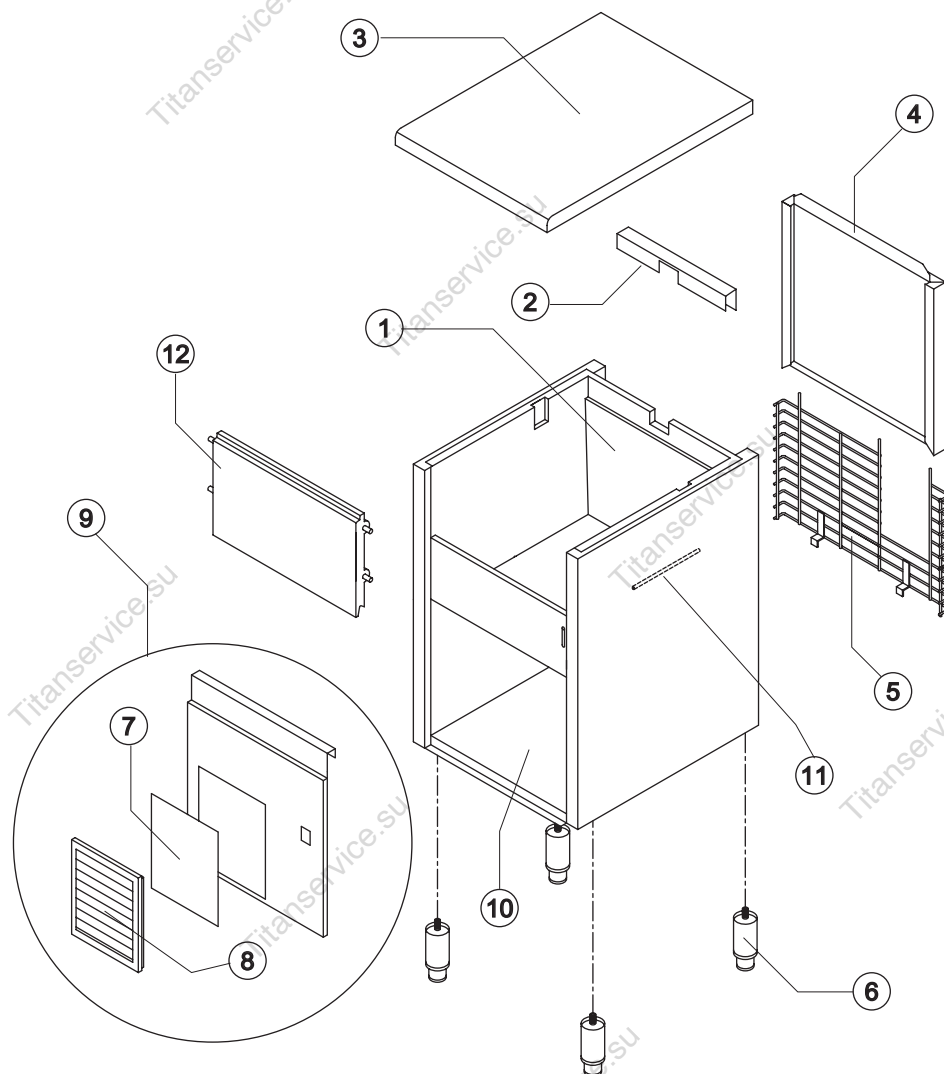
HYDRAULIC CIRCUIT

ELECTRIC PARTS



GB 1540

SHELL ASSY



| Ref. | Spare Description | Code |
|------|---|--------|
| 1 | Foamed Cabinet Assy See Table | - |
| 2 | Cover for Ice Exhaust | 22592 |
| 3 | Top Assembly | C22690 |
| 4 | Rear Panel Assembly | C21201 |
| 5 | Rear Grid | D12020 |
| 6 | Adjustable Stainless Steel Foot Current Version | 20613 |
| 6 | ABS Foot Till s/n. 142485 | 10040 |
| 7 | Filtering Panel | 18106 |
| 8 | Frame + Grid & Filter | C10205 |
| 9 | Front Grid Panel | C22509 |
| 10 | Base Plate Current Version | 21284 |
| 10 | Base Plate Till s/n.142485 | C21044 |
| 11 | Bulbe-holder Pipe | 20522 |
| 12 | Door Assy | C10275 |

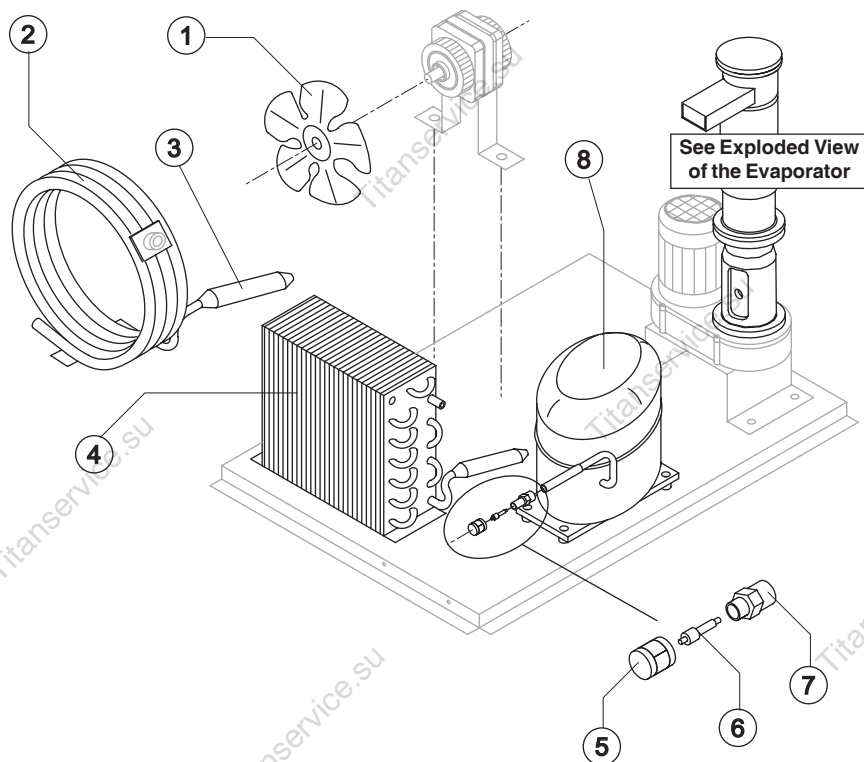
Ref. 1 - Foamed Cabinet Assy

| Condensation | Code |
|--------------|---------|
| Air | C11097A |
| Water | C11097W |



GB 1540

COOLING SYSTEM



Common Parts

| Ref. | Spare Description | Code |
|------|----------------------------|-----------|
| 3 | Molecular Drier | 14009 |
| 5 | Vacuum-Charge Valve Plug | 14006 |
| 6 | Vacuum-Charge Valve Body | 14005 |
| 7 | Vacuum-Charge Valve Device | 14007 |
| 8 | Compressor | See Table |

Parts for Air-Cooled Version Only

| Ref. | Spare Description | Code |
|------|-------------------|------------------------|
| 1 | Sucking Fan | 20031 |
| 4 | Air Condenser | Current Version 20558 |
| 4 | Air Condenser | Till s/n. 347947 20175 |
| 4 | Air Condenser | Till s/n.74774 20019 |

Parts for Water-Cooled Version Only

| Ref. | Spare Description | Code |
|------|-------------------|-------|
| 1 | Sucking Fan | 10213 |
| 2 | Water Condenser | 14014 |

Ref. 8 - Compressor

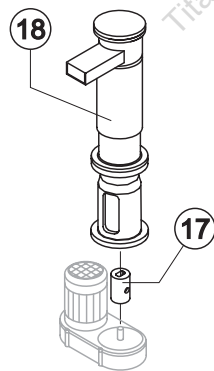
| Tension | Code |
|---------|--------|
| T11 | 23832 |
| T12 | 23578A |
| T13 | 23679 |
| T19 | 23679 |



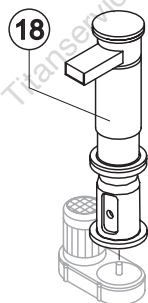
GB 1540

EVAPORATOR

Rev. 10 - 17/06/2009



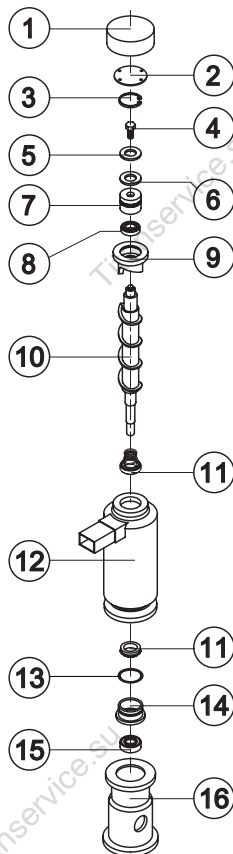
C11140



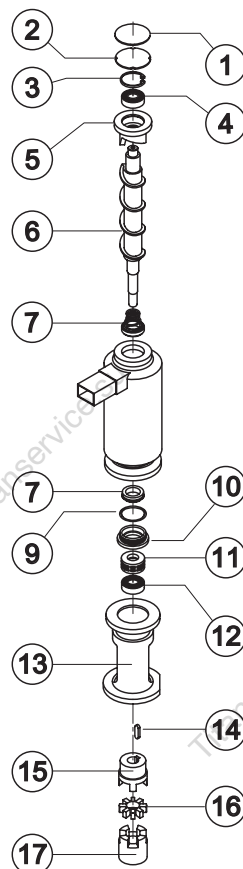
KITNEVGB

Current Version

Till s/n.157640



For Complete Evaporator,
order C11140.



For Complete Evaporator,
order KITNEVGB

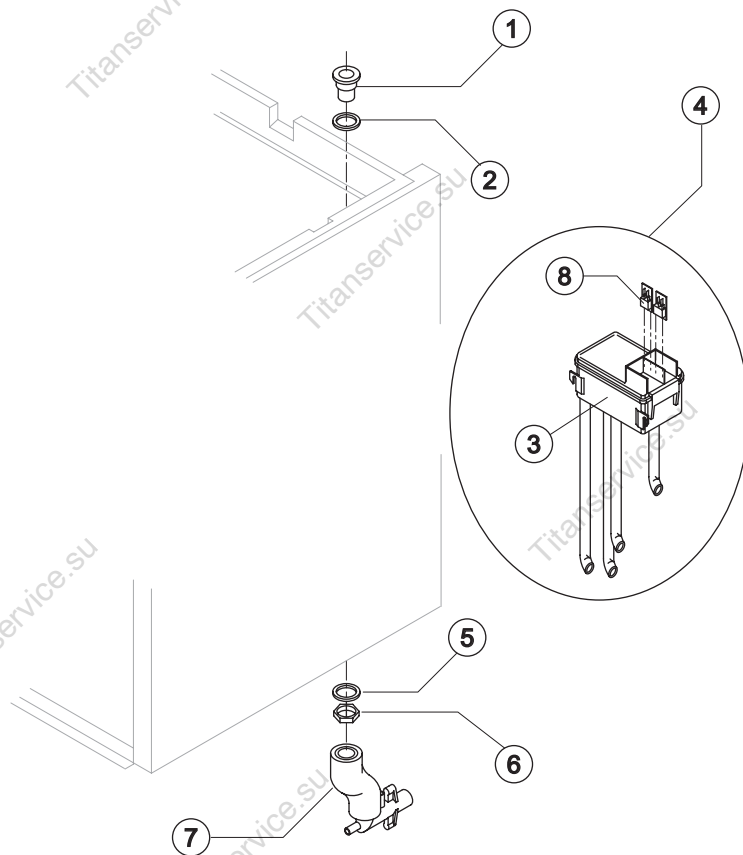
| Ref. | Spare Description (Current Version) | | Code |
|------|-------------------------------------|------------------|----------|
| 1 | Insulating Cap | Current Version | 18170 |
| 1 | Insulating Cap | Till s/n. 180719 | 18164 |
| 2 | Closing Disk | | 22825 |
| 3 | Seeger | | 20043 |
| 4 | Stainless Steel Screw | Current Version | 20663 |
| 4 | Stainless Steel Screw | Till s/n. 161504 | 15093 |
| 5 | Shimming Disk | | 22826 |
| 6 | Self-Lubricating Disk | | 20631 |
| 7 | Stainless Steel Thrust Bearing | | 20686 |
| 8 | OR Gasket 3087 | Current Version | 20688 |
| 8 | Seal Ring | Till s/n. 211897 | 20632 |
| 9 | Ice Breaker | | 20626 |
| 10 | Auger | Current Version | 20783 |
| 10 | Auger with Screw | Till s/n. 223592 | C20783 |
| 11 | Ceramic Seal | | 20937 |
| 12 | Insulated Evaporator | | C11107 |
| 13 | OR Gasket 3162 NBR70 | | 20429 |
| 14 | Reduction Ring | Current Version | 20785 |
| 14 | Reduction Ring | Till s/n. 223592 | 20624 |
| 15 | Stainless Steel Bearing | Current Version | 20782 |
| 15 | Stainless Steel Bearing | Till s/n. 223592 | 20045 |
| 16 | Flange | | 20629 |
| 17 | Joint | Current Version | D20784 |
| 17 | Joint | Till s/n. 223592 | D20630 |
| 18 | Evaporator Assy | Current Version | C11140 |
| 18 | Evaporator Assy | Till s/n. 223592 | KITNEVGB |

| Ref. | Spare Description (Till s/n.157640) | | Code |
|------|-------------------------------------|-----------|----------|
| 1 | Insulating Sponge | | 18116 |
| 2 | Closing Disk | | 22588 |
| 3 | Seeger Ring | | 20434 |
| 4 | Stainless Steel Upper Bearing | | 20433 |
| 5 | Ice Breaker | | 20440 |
| 6 | Auger | | 20439 |
| 7 | Ceramic Seal | | 20428 |
| 9 | OR Gasket 3162 NBR70 | | 20429 |
| 10 | Reduction Ring | | 20427 |
| 11 | Stainless Steel Thrust Bearing | | 20049 |
| 12 | Stainless Steel Bearing | | 20045 |
| 13 | Machined Joint Flange | | E20438 |
| 14 | Key | | 20431 |
| 15 | Semi-Joint | | D20430 |
| 16 | Vibration-Damping Elastomer | | 20455 |
| 17 | Semi-Joint | | D20454 |
| 18 | Evaporator Assy | ex C11095 | KITNEVGB |



GB 1540

HYDRAULIC CIRCUIT



Common Parts

| Ref. | Spare Description | Code |
|------|-------------------------------|----------|
| 1 | Water Outlet Nipple | 10472 |
| 2 | Silicone Gasket | 13006 |
| 3 | Double Switch Basin | 10145 |
| 4 | Double Switch Basin Assembly | C10165GB |
| 5 | Semirigid Polyethylene Gasket | 13007 |
| 6 | Bin Discharge Nut | 10096 |
| 8 | Microswitch | 23055 |

Parts for Air-Cooled Version Only

| Ref. | Spare Description | Code |
|------|---------------------|--------|
| 7 | Discharges Manifold | C10235 |

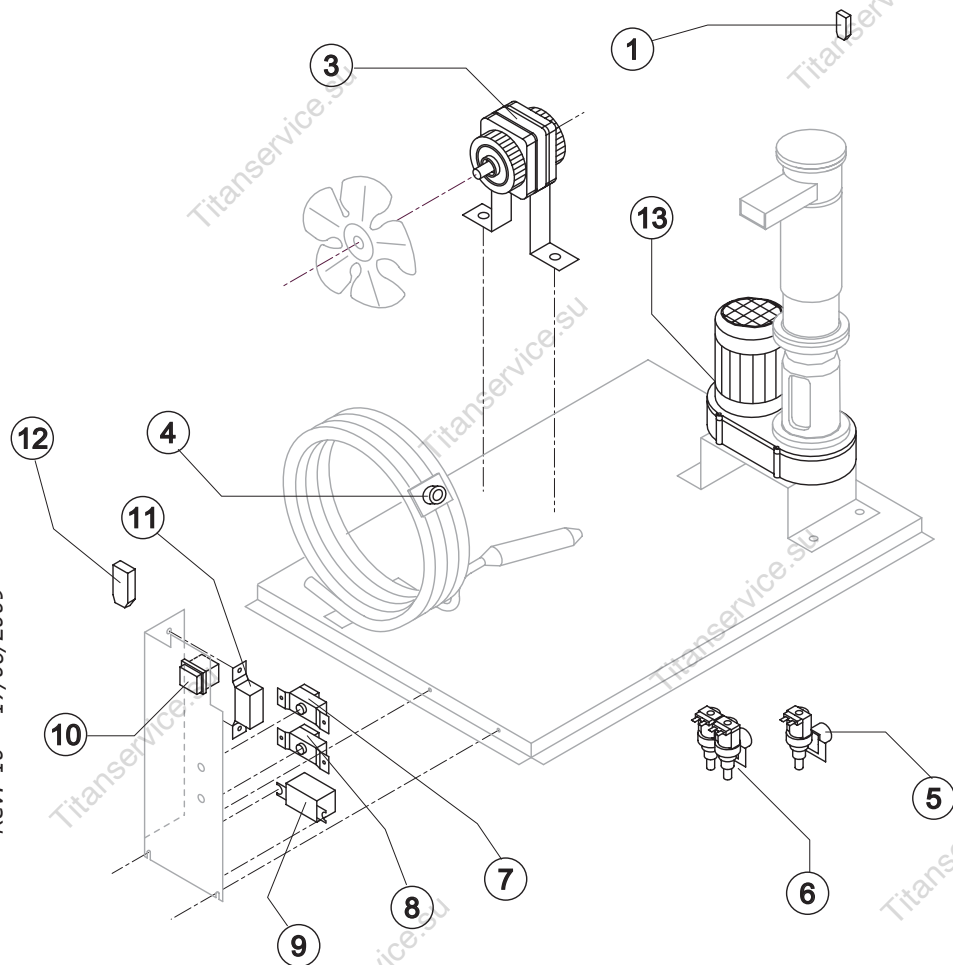
Parts for Water-Cooled Version Only

| Ref. | Spare Description | Code |
|------|---------------------|--------|
| 7 | Discharges Manifold | C10240 |



GB 1540

ELECTRIC PARTS



Common Parts

| Ref. | Spare Description | Code |
|------|-------------------------------------|--------|
| 1 | Anti Radio Interference Filter T11 | C23457 |
| 3 | Fan Motor See Table | - |
| 7 | Bin Thermostat | R23005 |
| 8 | Evaporator Thermostat | R23034 |
| 9 | Relay See Table | - |
| 10 | Green Light Switch (On-Off) | 23327 |
| 11 | Condenser Pressure Switch See Table | - |
| 12 | Anti Radio Interference Filter T11 | C23459 |
| 13 | Gearmotor See Table | - |

Parts for Air-Cooled Version Only

| Ref. | Spare Description | Code |
|------|------------------------------------|------|
| 5 | 1 Way- Water Inlet Valve See Table | - |

Parts for Water-Cooled Version Only

| Ref. | Spare Description | Code |
|------|-------------------------------------|--------|
| 4 | Safety Thermostat | C23114 |
| 6 | 2 Ways- Water Inlet Valve See Table | - |

Ref. 3 - Fan Motor

| Tension | Air | Water |
|---------|-------|-------|
| T11 | 23067 | 23029 |
| T12 | 23681 | 23029 |
| T13 | 23621 | 23683 |
| T19 | 23621 | 23683 |

Ref.5 - 1 Way-Water Inlet Valve

| Tension | Code |
|---------|-------|
| T11 | 23115 |
| T12 | 23115 |
| T13 | 23410 |
| T19 | 23410 |

Ref.6 - 2 Ways-Water Inlet Valve

| Tension | Code |
|---------|-------|
| T11 | 23010 |
| T12 | 23010 |
| T13 | 23261 |
| T19 | 23261 |

Ref. 9 - Relay

| Tension | Code |
|---------|-------|
| T11 | 23190 |
| T12 | 23190 |
| T13 | 23557 |
| T19 | 23557 |

Ref. 11 - Cond. Pressure Switch

| Tension | Code |
|---------|-------|
| T11 | 23175 |
| T12 | 23175 |
| T13 | 23175 |
| T19 | 23680 |

Ref. 13 - Gearmotor

| Tension | Code |
|---------|-------|
| T11 | 23532 |
| T12 | 23532 |
| T13 | 23556 |
| T19 | 23556 |