



GB 1555

LIST OF THE EXPLODED VIEWS



SHELL ASSY

COOLING SYSTEM

EVAPORATOR

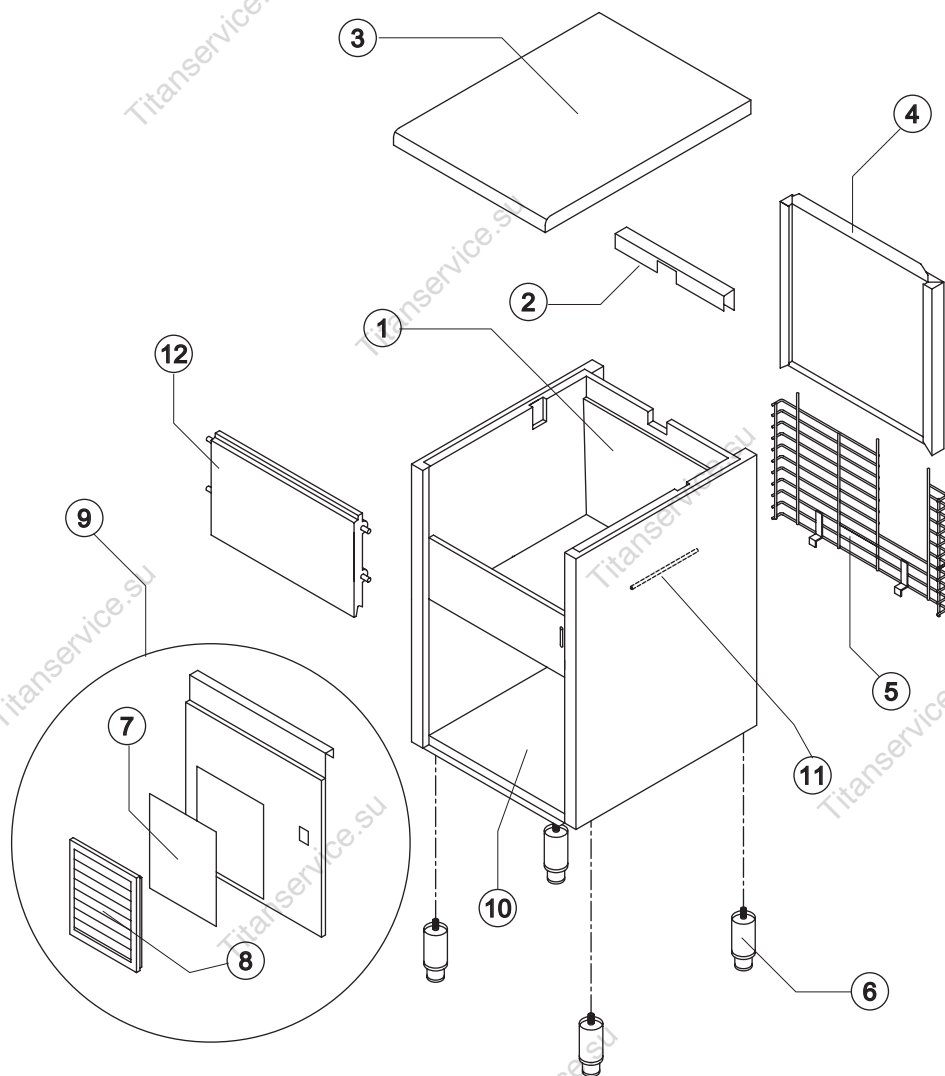
HYDRAULIC CIRCUIT

ELECTRIC PARTS



GB 1555

SHELL ASSY



Ref.	Spare Description	Code
1	Foamed Cabinet Assy	See Table
2	Cover for Ice Exhaust	22592
3	Top Assembly	C21202
4	Rear Panel Assembly	C22290
5	Rear Grid	D12020
6	Adjustable Stainless Steel Foot	Current Version
6	ABS Foot	Till s/n. 142485
7	Filtering Panel	18106
8	Frame + Grid & Filter	C10205
9	Front Grid Panel	C22510
10	Base Plate	Current Version
10	Base Plate	Till s/n. 142485
11	Bulbe-holder Pipe	20522
12	Door Assy	C10275

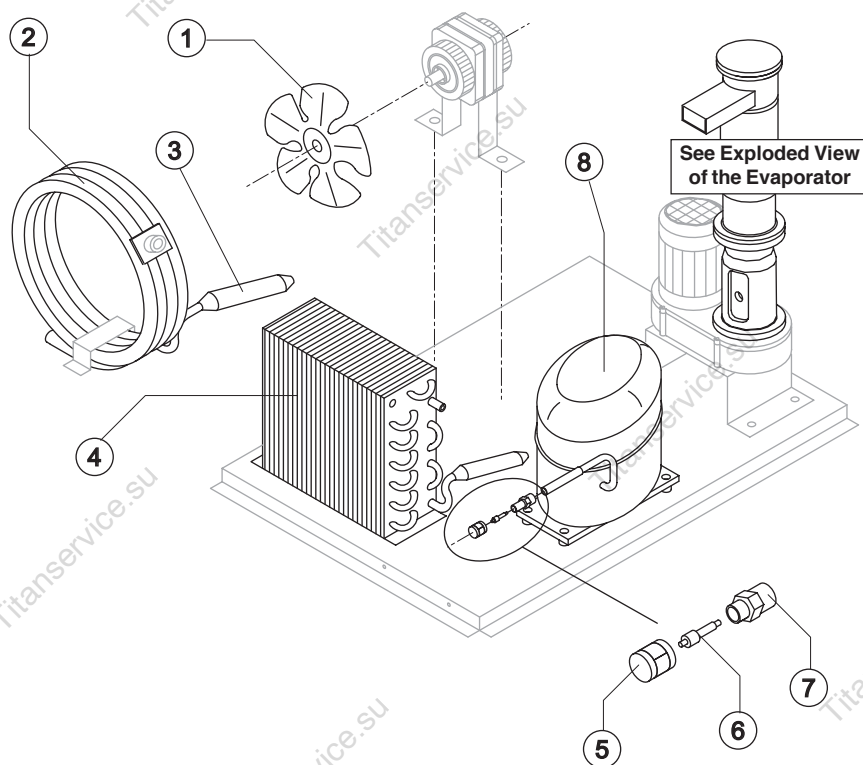
Ref. 1 - Foamed Cabinet Assy

Condensation	Code
Air	C11098A
Water	C11098W



GB 1555

COOLING SYSTEM



Common Parts

Ref.	Spare Description	Code
3	Molecular Drier	14009
8	Compressor	See Table
5	Vacuum-Charge Valve Plug	14006
6	Vacuum-Charge Valve Device	14005
7	Vacuum-Charge Valve Body	14007

Parts for Air-Cooled Version Only

Ref.	Spare Description	Code
1	Sucking Fan	20031
4	Air Condenser	Current version
4	Air Condenser	Till s/n. 347947
4	Air Condenser	Till s/n. 74774

Parts for Water-Cooled Version Only

Ref.	Spare Description	Code
1	Sucking Fan	10213
2	Water Condenser	14014

Ref. 8 - Compressor

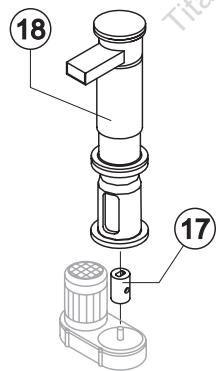
Tension	Code
220/240V 50 Hz	23832
220/230V 60 Hz	23578A
110/115V 60 Hz	23579



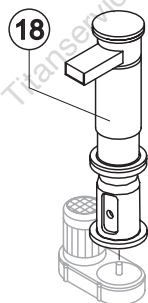
GB 1555

EVAPORATOR

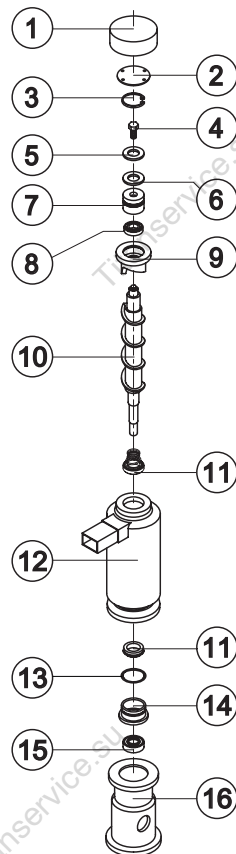
Rev. 8 - 09/07/2007



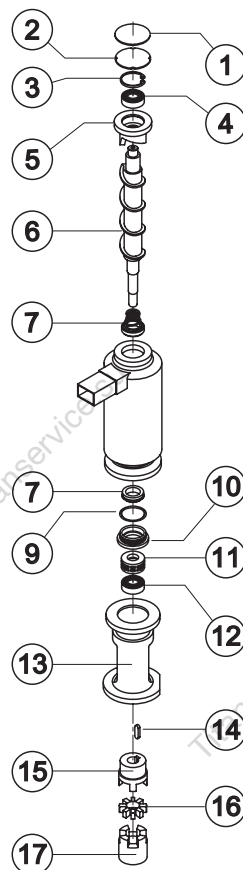
C11140



KITNEVGB



For Complete Evaporator,
order C11140.



For Complete Evaporator,
order KITNEVGB

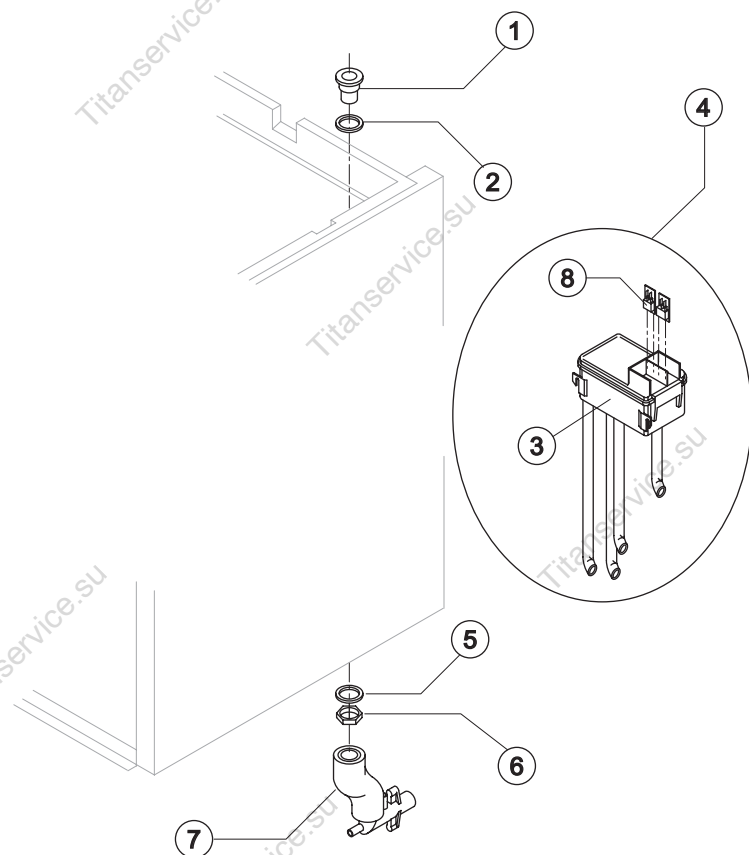
Ref.	Spare Description (Current Version)		Code
1	Insulating Cap	Current Version	18170
1	Insulating Cap	Till s/n. 180719	18164
2	Closing Disk		22825
3	Seeger		20043
4	Stainless Steel Screw	Current Version	20663
4	Stainless Steel Screw	Till s/n. 161504	15093
5	Shimming Disk		22826
6	Self-Lubricating Disk		20631
7	Stainless Steel Thrust Bearing		20686
8	OR Gasket 3087	Current Version	20688
8	Seal Ring	Till s/n. 211897	20632
9	Ice Breaker		20626
10	Auger	Current Version	20783
10	Auger with Screw	Till s/n. 223592	C20783
11	Ceramic Seal		20633
12	Insulated Evaporator		C11107
13	OR Gasket 3162 NBR70		20429
14	Reduction Ring	Current Version	20785
14	Reduction Ring	Till s/n. 223592	20624
15	Stainless Steel Bearing	Current Version	20782
15	Stainless Steel Bearing	Till s/n. 223592	20045
16	Flange		20629
17	Joint	Current Version	D20784
17	Joint	Till s/n. 223592	D20630
18	Evaporator Assy	Current Versio	C11140
18	Evaporator Assy	Till s/n. 223592	KITNEVGB

Ref.	Spare Description (Till s/n.157640)		Code
1	Insulating Sponge		18116
2	Closing Disk		22588
3	Seeger Ring		20434
4	Stainless Steel Upper Bearing		20433
5	Ice Breaker		20440
6	Auger		20439
7	Ceramic Seal		20428
9	OR Gasket 3162 NBR70		20429
10	Reduction Ring		20427
11	Stainless Steel Thrust Bearing		20049
12	Stainless Steel Bearing		20045
13	Machined Joint Flange		E20438
14	Key		20431
15	Semi-Joint		D20430
16	Vibration-Damping Elastomer		20455
17	Semi-Joint		D20454
18	Evaporator Assy	ex C11095	KITNEVGB



GB 1555

HYDRAULIC CIRCUIT



Common Parts

Ref.	Spare Description	Code
1	Water Outlet Nipple	10472
2	Silicone Gasket	13006
3	Double Switch Basin	10145
4	Double Switch Basin Assembly	C10200GB
5	Semirigid Polyethylene Gasket	13007
6	Bin Discharge Nut	10096
8	Microswitch	23055

Parts for Air-Cooled Version Only

Ref.	Spare Description	Code
7	Discharges Manifold	C10235

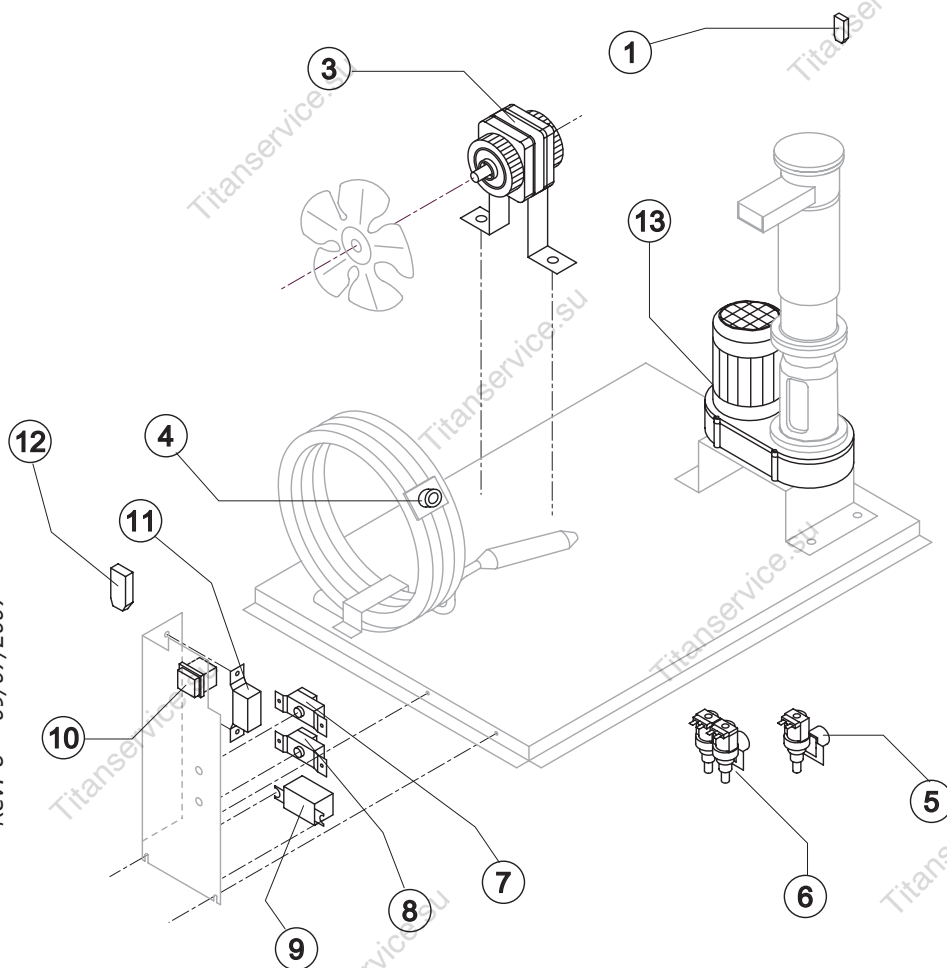
Parts for Water-Cooled Version Only

Ref.	Spare Description	Code
7	Discharges Manifold	C10240



GB 1555

ELECTRIC PARTS



Common Parts

Ref.	Spare Description	Code
1	Anti Radio Interference Filter 220/240V 50 Hz	C23457
3	Fan Motor See Table	-
7	Bin Thermostat	R23005
8	Evaporator Thermostat	R23034
9	Relay See Table	-
10	Green Light Switch (On-Off)	23327
11	Condenser Pressure Switch	23175
12	Anti Radio Interference Filter 220/240V 50 Hz	C23459
13	Gearmotor See Table	-

Parts for Air-Cooled Version Only

Ref.	Spare Description	Code
5	1 Way- Water Inlet Valve See Table	-

Parts for Water-Cooled Version Only

Ref.	Spare Description	Code
4	Safety Thermostat	C23114
6	2 Ways- Water Inlet Valve See Table	-

Ref. 3 - Fan Motor

Tension	Air	Water
220/240V 50 Hz	23067	23029
220/230V 60 Hz	23681	23029
110/115V 60 Hz	23621	23683

Ref. 5 - 1 Way-Water Inlet Valve

Tension	Code
220/240V 50 Hz	23115
220/230V 60 Hz	23115
110/115V 60 Hz	23410

Ref. 6 - 2 Ways-Water Inlet Valve

Tension	Code
220/240V 50 Hz	23010
220/230V 60 Hz	23010
110/115V 60 Hz	23261

Ref. 9 - Relay

Tension	Code
220/240V 50 Hz	23190
220/230V 60 Hz	23190
110/115V 60 Hz	23557

Ref. 13 - Gearmotor

Tension	Code
220/240V 50 Hz	23532
220/230V 60 Hz	23532
110/115V 60 Hz	23556