



# **MUSTER 800**

## **LIST OF THE EXPLODED VIEWS**

**2nd Version M800A - M800W - M800AW**



**1st Version M800A/W - M800W**



**SHELL 2nd Version M800A - M800W - M800AW**

**SHELL ASSY 1st Version M800A/W - M800W**

**COOLING SYSTEM 2nd Version M800A - M800W - M800AW**

**COOLING SYSTEM 1st Version M800A/W - M800W**

**EVAPORATOR 2nd Version M800A - M800W - M800AW**

**EVAPORATOR 1st Version M800A/W - M800W**

**PUMP**

**ELECTRIC PARTS 2nd Version M800A - M800W - M800AW**

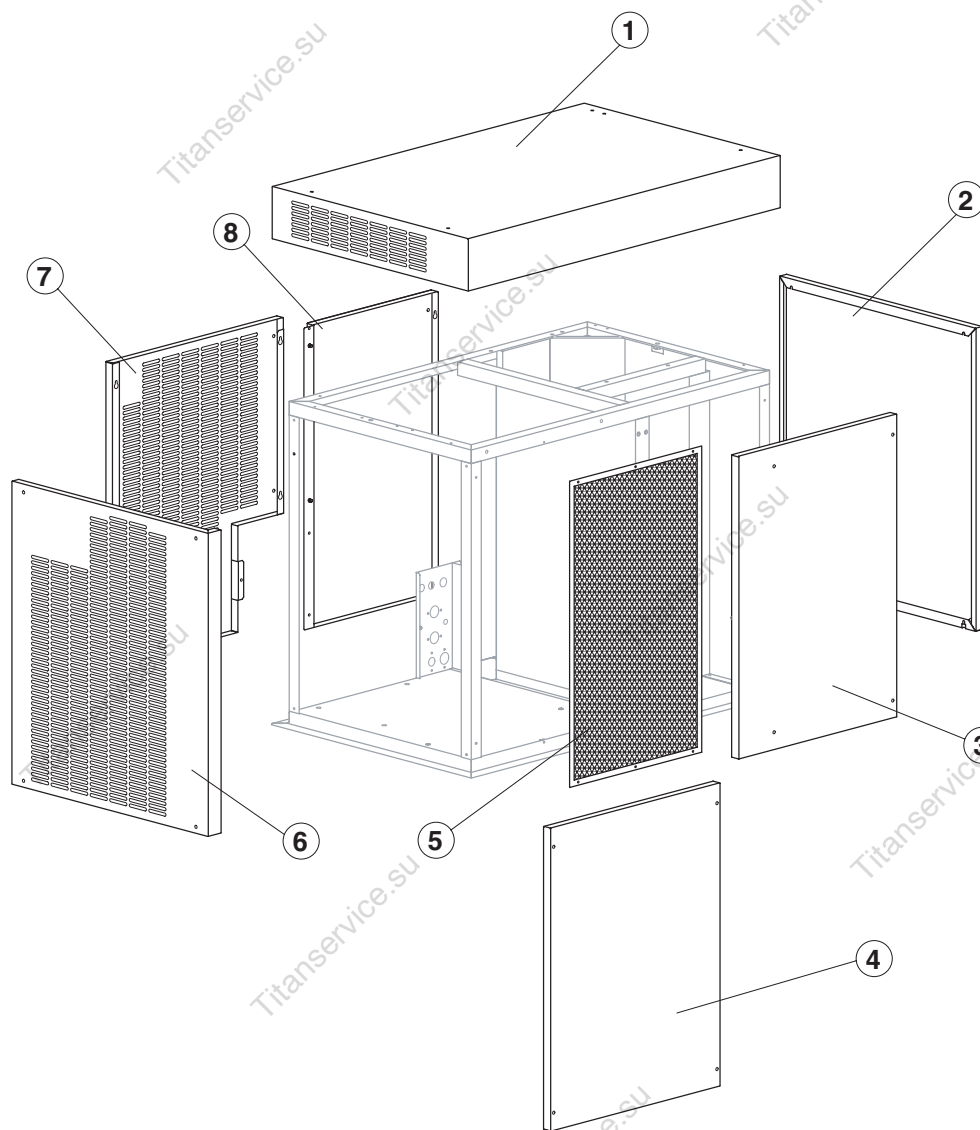
**ELECTRIC PARTS 1st Version M800A/W - M800W**



# MUSTER 800

2nd Version M800A - M800W - M800AW

## SHELL ASSY



### Common Parts

Ref.	Spare Description	Code
1	Top Assembly	C22449
2	Right Side Panel	22445
3	Front Panel Assy (Evaporator Side)	C22448B
6	Left Side Panel	22444
7	Rear Panel (Group Side)	22926
8	Rear Panel (Evaporator Side)	22925

### Parts for Air-Cooled and Mixed Cooled Version Only

Ref.	Spare Description	Code
5	Filter	18183

### Parts for Water-Cooled Version Only

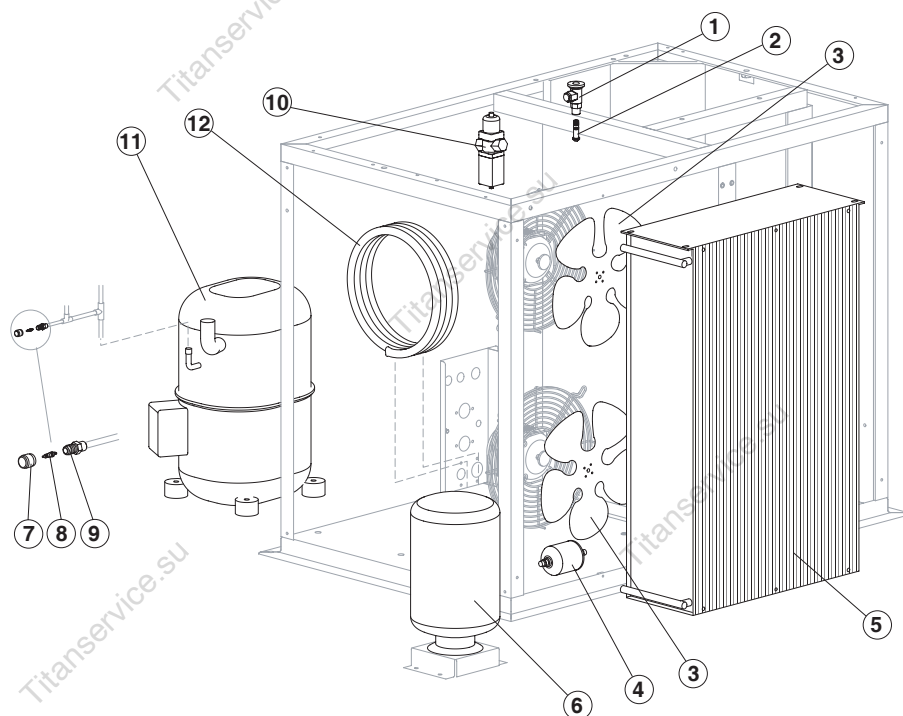
Ref.	Spare Description	Code
4	Front Panel	22927



# MUSTER 800

2nd Version M800A - M800W - M800AW

## COOLING SYSTEM



### Common Parts

Ref.	Spare Description	Code
1	Expansion Valve	20734
2	Orifice	20733
4	Solid Core drier	14255
7	Vacuum-Charge Valve Plug	14006
8	Vacuum-Charge Valve Device	14005
9	Vacuum-Charge Valve Body	14007
11	Compressor	23518

### Parts for Air-Cooled Version Only

Ref.	Spare Description	Code
3	Sucking Fan	20407
5	Air Condenser	20787

### Parts for Water-Cooled Version Only

Ref.	Spare Description	Code
6	Water Condenser	14496
10	Pressostatic Valve	20149

### Parts for Mixed Cooled Version Only

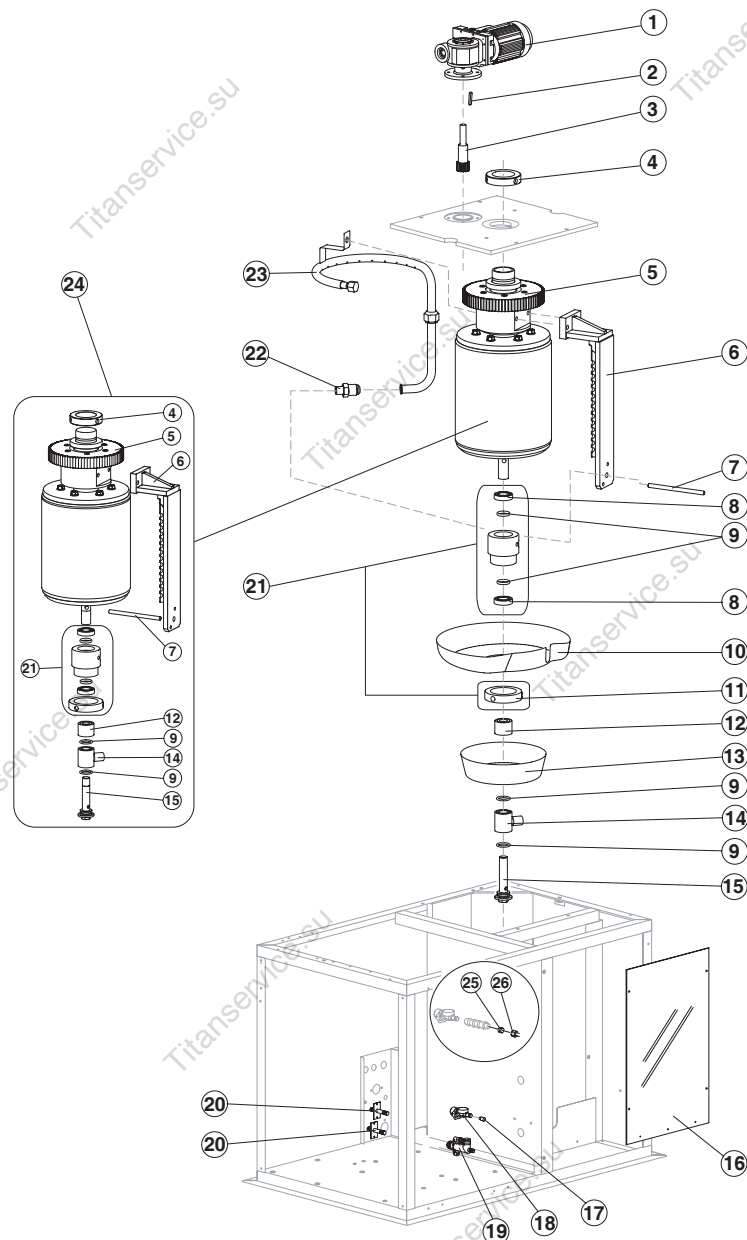
Ref.	Spare Description	Code
3	Sucking Fan	20407
5	Air Condenser	20787
12	Water Condenser	14034



# MUSTER 800

2nd Version M800A - M800W - M800AW

## EVAPORATOR



### Common Parts

Ref.	Spare Description	Code
1	Gearmotor Assy	C23412
2	Key 6x6x40	20350
3	Pinion with Shaft for Gearmotor	C20344
4	Cylinder Locking Ring Nut	20365
5	Ring Gear	20363
6	Scraper	20358
7	M10 Tie Rod (to Block Scraper)	20369
8	Stainless Steel Upper Bearing	20045
9	Silicone OR 4081 Ring	20338
10	Rotating Basin	10191
11	Ring Nut for Rotating Ring	10194
12	Spacer	Current Version 10528
12	Spacer	Till s/n. 387018 20366
13	Fixed Basin	C10192
14	Water Inlet Ring	20851
15	Screw	20872
16	Evaporator Chamber Shield	Current Version 10531
16	Evaporator Chamber Shield	Till s/n. 387018 10196
18	1 Way- Water Inlet Nipple	10239
19	Discharges Manifold	C10384
21	Complete Rotating Ring	C10193
22	Joint	20367
23	Sprayer Ring	C20357
24	Evaporator	Current Version C20879
24	Evaporator	Till s/n. 387018 KITNEVM800
25	Bush	Till s/n. 260296 20405
26	Nut	Till s/n. 260296 20404

### Parts for Water-Cooled version Only

Ref.	Spare Description	Code
20	Connection with Plate	C20462

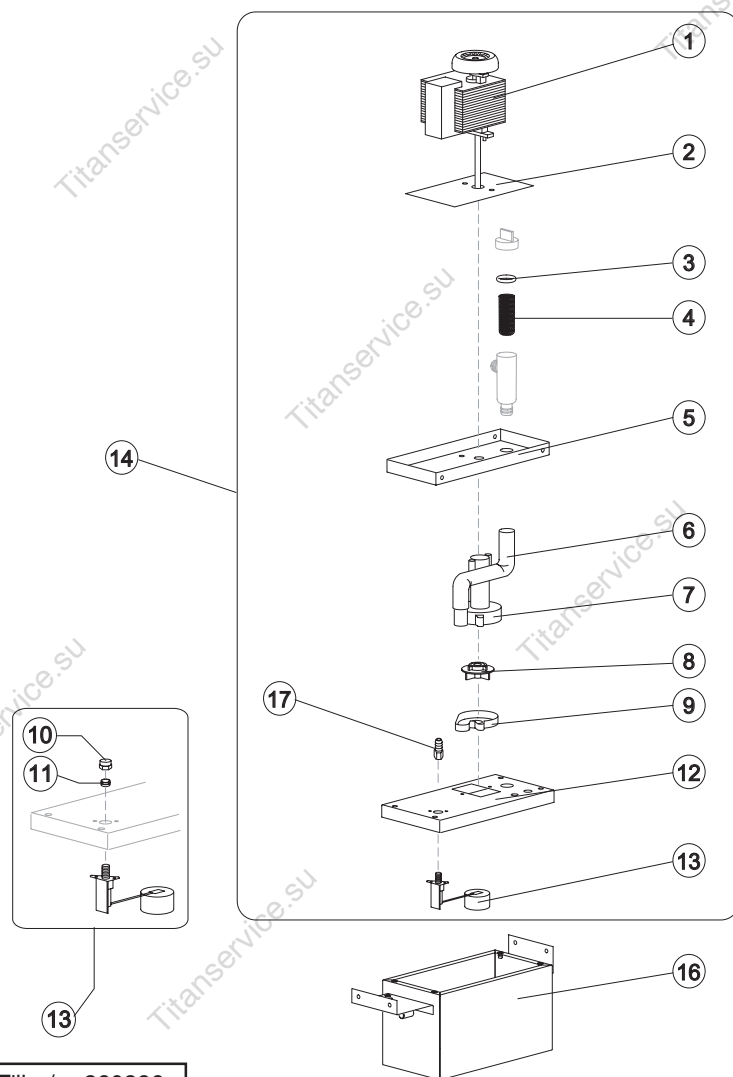
### Parts for Mixed Cooled version Only

Ref.	Spare Description	Code
17	Lt. 2,0 Flow Control for Water Inlet Connector	10077
20	Connection with Plate	C20462



# MUSTER 800

## PUMP



### Common Parts

Ref.	Spare Description	Code
1	Pump	See Table
2	Heat Dissipator	22430
3	Pump Filter Gasket	13080
4	Filtering Element	20254
5	Pump Motor Support	10161
6	Pump-Filter Connection Pipe	13084
7	Pump Body	10065
8	Pump Impeller	10138
9	Diffusor	10067
10	Nut	Till s/n. 260296
11	Bush	Till s/n. 260296
12	Water Pump Basin Cover	22420
13	Floating Valve	Current Version
13	Floating Valve Assy	Till s/n. 260296
14	Pump and Filter Assy	See Table
16	Water Pump Basin	C22443
17	Connection	20799

### Ref. 1 - Pump

Tension	Code
T14	23073
T15	23073
T16	23187
T17	23187

### Ref. 14 - Pump and Filter Assy

Tension	Code	Till Oct. 31st, 2007
T14	C26738	C26711
T15	C26738	C26711
T16	C26739	C26712
T17	C26739	C26712



Ref. 14 - For ice-makers with s/n. before 260297 ask also the Nut (ref. 10) and the Bush (ref. 11).

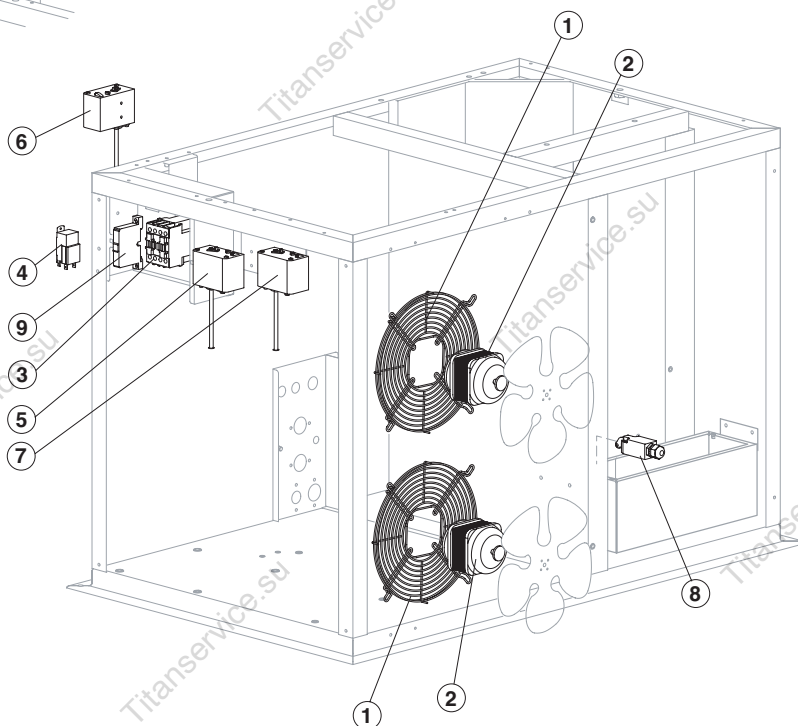
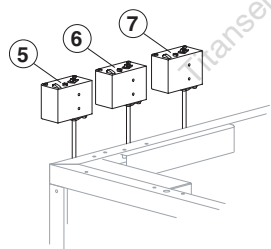


# MUSTER 800

2nd Version M800A - M800W - M800AW

## ELECTRIC PARTS

Pressure Switch Views till s/n. 301010



### Common Parts

Ref.	Spare Description	Code
3	Contacteur	23147
4	Bin Thermostat	R23005
5	Safety Pressure Switch (Low Pressure Circuit) Current Version	23763
5	Safety Pressure Switch (Low Pressure Circuit) Till s/n. 237664	23577
6	Safety Pressure Switch (Low Pressure)	23729
7	Safety Pressure Switch (High Pressure)	23729
8	Microswitch for Overflow Ice	23746
9	Thermomagnetic circuit breaker	23910

### Parts for Air-Cooled Version Only

Ref.	Spare Description	Code
1	Fan Motor Grid	12056
2	Fan Motor	23121