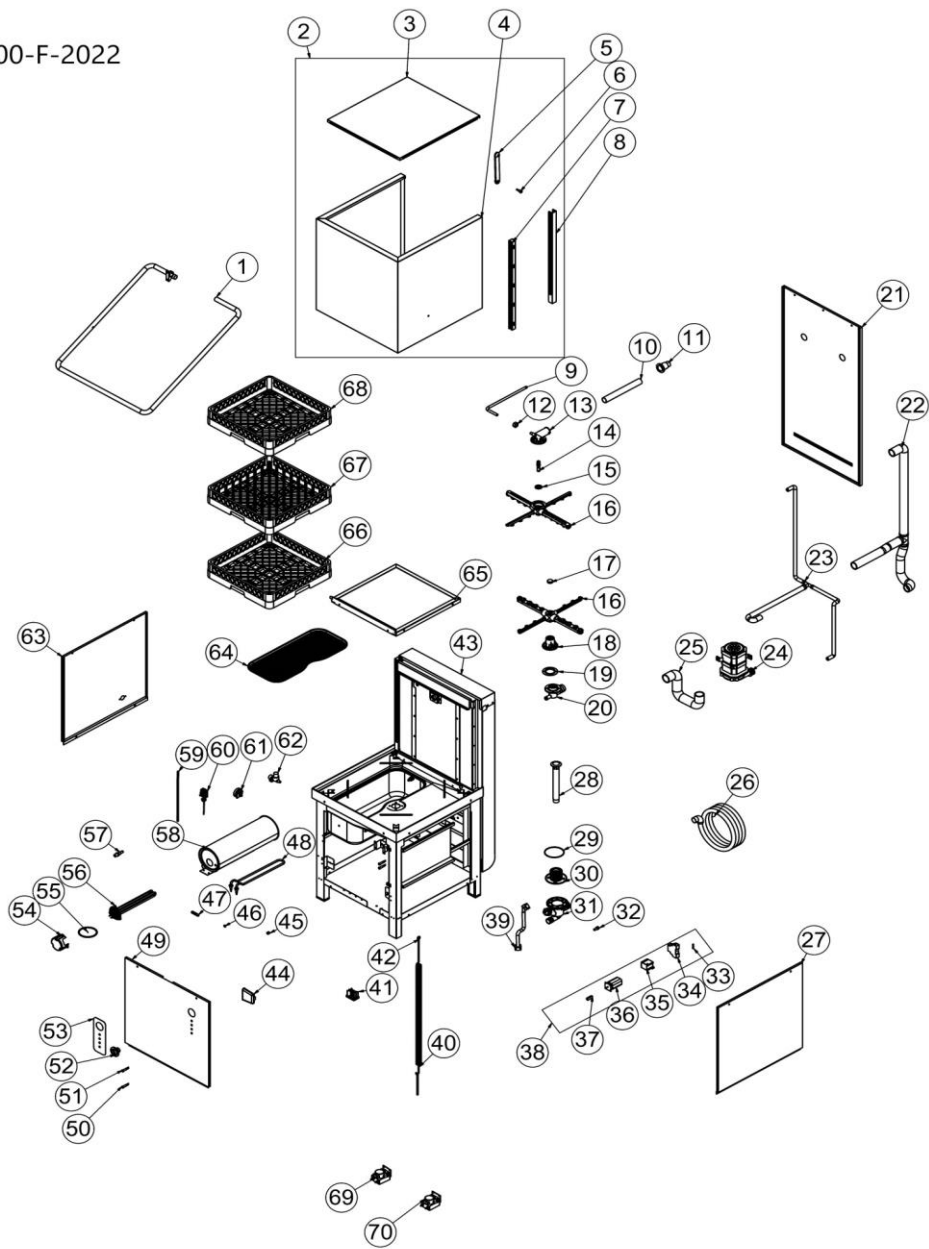


EMP.1000-F-2022



Sequence No.	Product Code	Stock code	Stock Name
1	EMP.1000-F	YBR-ERS.BYM-KS-0026	SATIN PIPE 25*1,50
2	EMP.1000-F	ARA-ERS.BYM-0015	COVER INTERMEDIATE ASSEMBLY
3	EMP.1000-F	YSC-ERS.BYM-PN-0249	TOP COVER TOP SHEET
4	EMP.1000-F	YSC-ERS.BYM-PN-0250	TOP COVER SHEET (WITHOUT SKIN)
5	EMP.1000-F	M.ENJ-ERS-PLS-BYM-098	TOP COVER MOTION ARM PLASTIC
6	EMP.1000-F	YTL-ERS.BYM-KS-0069	COVER HANDLE CONNECTION SCREW
7	EMP.1000-F	M.ENJ-ERS-PLS-BYM-075	TOP COVER SLIDE
8	EMP.1000-F	M.MTS-ERS-BYM-009	KIZAK SACI
9	EMP.1000-F	YBR-ERS.BYM-KS-0021	RINSE PIPE
10	EMP.1000-F	YBR-ERS.BYM-KS-0022	UPPER SPRAY PIPE
11	EMP.1000-F	M.ENJ-ERS-PLS-BYM-011	WATER DRAIN WEDGE BEARING
12	EMP.1000-F	YTL-ERS.BYM-KS-0030	ELBOW CONNECTION YELLOW NUT
13	EMP.1000-F	M.ENJ-ERS-PLS-BYM-021	HOSE INLET UPPER ELBOW
14	EMP.1000-F	YTL-ERS.BYM-KS-0001	SPRAY SHAFT
15	EMP.1000-F	M.ENJ-ERS-PLS-BYM-059	PLASTIC BASIN
16	EMP.1000-F	M.ENJ-ERS-PLS-BYM-053	FOUNTAIN
17	EMP.1000-F	M.ENJ-ERS-PLS-BYM-070	SHOPPING HUB SCREW
18	EMP.1000-F	M.ENJ-ERS-PLS-BYM-027	LOWER FISCAL BELLY
19	EMP.1000-F	M.ENJ-ERS-LST-019	LOWER UPPER SPRAY HUB GASKET (ORING)
20	EMP.1000-F	M.ENJ-ERS-PLS-BYM-096	HOSE INLET LOWER ELBOW (WITHOUT BUSHING)
21	EMP.1000-F	YSC-ERS.BYM-PN-0230	BACK COVER SHEET
22	EMP.1000-F	ERS.M.MEK-TES-HRT-009	WASHING ARM HOSE
23	EMP.1000-F	M.MEK-TES-HRT-039	SHOPPING ARM HOSE
24	EMP.1000-F	M.ELK-MTR-PMP-001	L71.T7 Pump 0.7HP 230V 50HZ M INS.CL. DISHWASHER MOTOR
25	EMP.1000-F	M.MEK-TES-HRT-080	ENGINE BOILER CONNECTION HOSE
26	EMP.1000-F	M.MEK-TES-HRT-034	WASTE WATER HOSE DIAMETER 35
27	EMP.1000-F	YSC-ERS.BYM-PN-0244	SAG YAN SACI
28	EMP.1000-F	M.ENJ-ERS-PLS-BYM-115	WATER DRAIN WEDGE
29	EMP.1000-F	M.CNT-ERS-031	FILTER BODY AIR TRAP PLASTIC GASKET DIA.112*5
30	EMP.1000-F	M.ENJ-ERS-PLS-BYM-086	FILTER COVER
31	EMP.1000-F	M.ENJ-ERS-PLS-BYM-088	FILTER BODY+AIR TRAPPING
32	EMP.1000-F	M.PLS-ERS-036	DETERGENT ENTRY PLASTIC
33	EMP.1000-F	M.ELK-SGR-011	GLASS FUSE 5A
34	EMP.1000-F	ERS.M.ELK-KNT-ROL-020	TIMER
35	EMP.1000-F	ERS.M.ELK-KNT-KNT-020	MINI CONTACTOR
36	EMP.1000-F	M.ELK-SLT-PKO-014	YK0315K16 PAKO SALTER
37	EMP.1000-F	M.ELK-SWC-KTG-005	MM-B38L-YA MAGNETIC SENSOR-HORIZONTAL
38	EMP.1000-F	M.ELK-PNO-BYM-002	READY ELECTRICAL PANEL GROUP
39	EMP.1000-F	ERS.M.MEK-TES-HRT-011	MAINS HOSE (150 CM)
40	EMP.1000-F	M.YAY-ERS-041	TOP COVER SPRING
41	EMP.1000-F	ERS.M.AKS-AYK-PLS-005	40*60 ROTARY FEET (M16*50 BOLT)
42	EMP.1000-F	ERS.M.MUH-042	SPRING TENSION HOLDER
43	EMP.1000-F		CHASSIS
44	EMP.1000-F	M.ENJ-ERS-PLS-BYM-019	AIR TRAP
45	EMP.1000-F	M.MIK-ERS-002	PRINT 13*10 - NEODYMIUM MAGNET
46	EMP.1000-F	M.CNT-ORG-002	AIR TRAP ORIGINAL (2,5X11)
47	EMP.1000-F	YBR-ERS.BYM-KS-0001	BOILER VALVE INLET PIPE
48	EMP.1000-F	M.ELK-RZS-BRU-BYM-028	RESISTANCE TANK 230V-2500W
49	EMP.1000-F	YSC-ERS.BYM-PN-0245	FRONT SHEET
50	EMP.1000-F	ERS.M.ELK-LMB-SNY-001	PLUG SOCKET WARNING LAMP- GREEN
51	EMP.1000-F	ERS.M.ELK-LMB-SNY-003	PLUG SOCKET WARNING LAMP- YELLOW
52	EMP.1000-F	M.AKS-DGM-MUH-002	SWITCH BUTTON
53	EMP.1000-F	M.AKS-ETK-LKS-ERS-BYM-003	PANEL LABEL
54	EMP.1000-F	M.ENJ-ERS-PLS-BYM-028	BOILER RESISTANCE COVER
55	EMP.1000-F	M.CNT-ORG-012	BOILER RESISTANCE ORIGINAL-(7X57)
56	EMP.1000-F	M.ELK-RZS-BRU-BYM-029	BOILER RESISTANCE 380V-6000W
57	EMP.1000-F	YTL-ERS.BYM-KS-0028	RINSE ARM CONNECTION
58	EMP.1000-F	M.MEK-TES-BYM-BYL-002	BOILER TANK
59	EMP.1000-F	HTS-HRT-008	PROCESTAT HOSE 4-8
60	EMP.1000-F	M.ELK-MEK-TRM1-008	TERMOSTAT-0-90C
61	EMP.1000-F	M.ELK-MUH-001	PROCESTATE FLOOR
62	EMP.1000-F	M.ELK-SLN-PLS-001	VALVE-SINGLE ENTRY(14 LT)
63	EMP.1000-F	YSC-ERS.BYM-PN-0243	LEFT SIDE SHEET
64	EMP.1000-F	M.ENJ-ERS-PLS-BYM-116	BOILER FILTER PLASTIC
65	EMP.1000-F	YSC-ERS.BYM-LZ-0307	BASKET TABLE BODY SHEET
66	EMP.1000-F	EMP.TB.01	PLATE BASKET
67	EMP.1000-F	EMP.BB.01	CUP BASKET
68	EMP.1000-F	EMP.KC.01	CROP FORK BASKET
69	EMP.1000-F	M.ELK-MTR-PMP-006	MP3-T 3 I/H 230VAC DETERGENT PUMP
70	EMP.1000-F	M.ELK-MTR-PMP-007	MP3-T 1 I/H 3 BAR 230VAC PUMPED SPEAKERS