

taurus

FOOD PROCESSOR ROWZER PLUS

Code: 926012000

6KH

Taurus Household Appliances
After-Sales Service

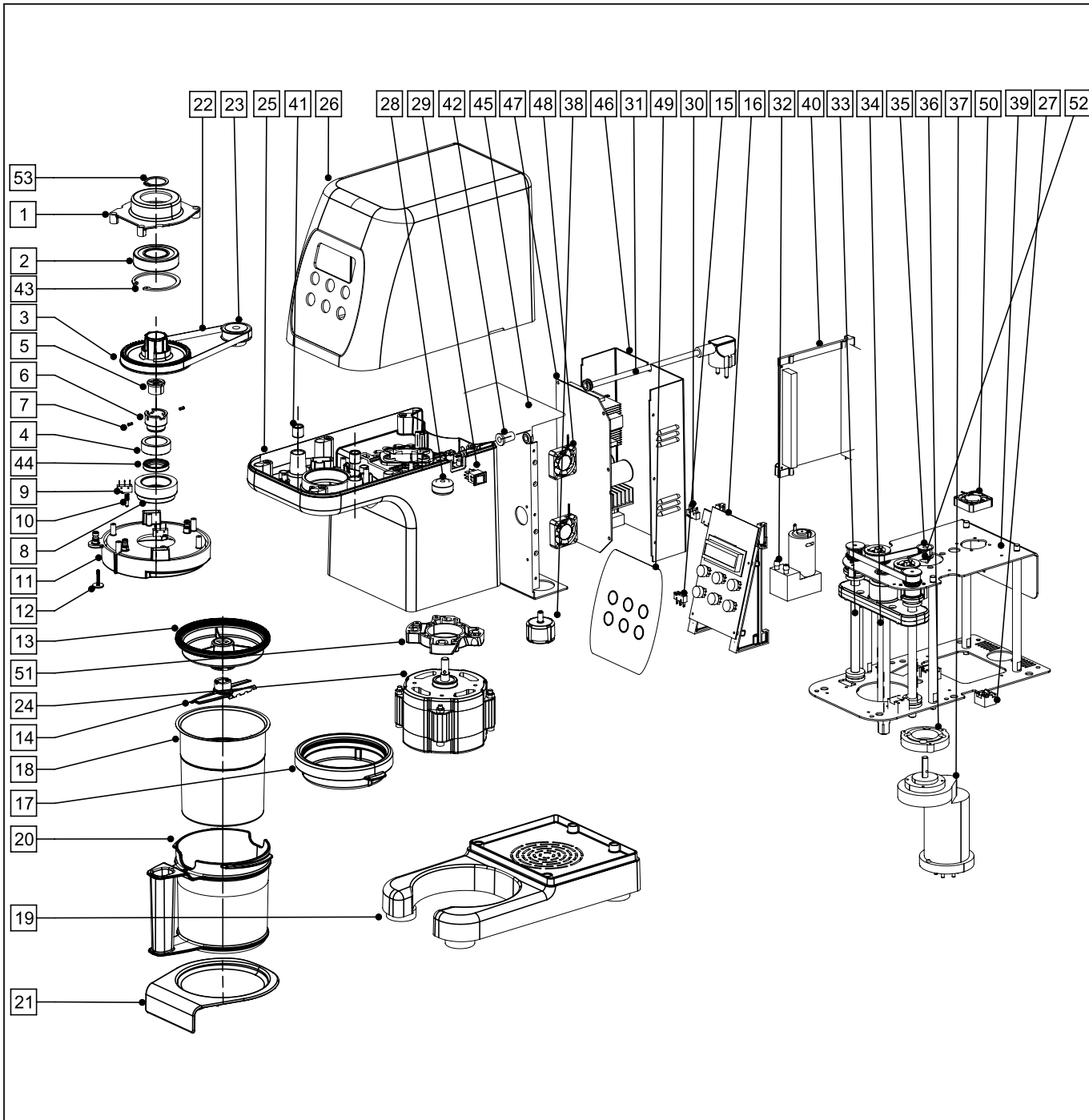
Emulsifier and processor frozen foods

Rowzer Plus



Note:

This product will be repaired in
TAURUS manufactures.



1	AXIS BEARING SUPPORT	1	Aluminium
2	UPPER BALL BEARING PULLEY HTD 60	1	Various
3	PULLEY HTD 60	1	POM
4	SINTERED BEARING ø30	1	Bronze
5	GASKET AXIS BLADES	1	NBR
6	STEEL BUSHING PULLEY HTD 60	1	AISI 420
7	SLOTTED SPRING PINS	2	Spring Steel
8	ALUMINIUM BUSHING LOWER BODY-UP	1	Aluminium
9	MICROSWITCH JAR DETECTOR	2	Various
10	MICROSWITCH BUTTON	2	POM
11	JAR ANCHOR BRACKET	1	POM
12	CONTROL BUTTON AIR	1	POM
13	SET LID PLASTIC JAR	1	POM
14	BLADES	1	AISI 440 NB
15	MICROSWITCH DETECTOR LOWER	1	Various
16	PCB CONTROL WITH SUPPORTS	1	Various
17	LID FOOD CONTAINER	2	HDPE
18	FOOD CONTAINER	2	AISI 304
19	LOWER BODY-LOW	1	Aluminium
20	PLASTIC JAR	1	POM
21	TRAY	1	Aluminium
22	TIMING BELT RPP 500 5M 09	1	Various
23	PULLEY HTD-24	1	Steel
24	MOTOR BLDC	1	Various
25	LOWER BODY-UP	1	Aluminium
26	UPPER BODY	1	Aluminium
27	PCI HALL	2	PP
28	COIL SHOCK	1	Various
29	GENERAL SWITCH	1	Various
30	MICROSWITCH DETECTOR UPPER	1	Various
31	POWER CORD	1	Various
32	AIR PUMP	1	Various
33	THREADED ROD M-12X1.25	2	AISI 304
34	AXIS BLADES ASSEMBLY UP AND DOWN	1	AISI 304
35	PULLEY HTD-12 5M	1	Steel
36	COUPLING REDUCTOR	1	PA+30GF
37	MOTOR REDUCTOR	1	Various
38	AIR FILTER ASSEMBLY	1	PP
39	CHASSIS ASSEMBLY	1	Various
40	PCB POWER	1	Various
41	SINTERED BEARING ø15	2	Bronze
42	CABLE PROTECTOR	1	EPDM
43	SEEGER RING FOR BORES ø62	1	Elastic steel
44	ROTARY SHAFT SEAL	1	Various
45	DRIVER BOX INNER PART	1	Aluminium
46	DRIVER BOX OUTER PART	1	Aluminium
47	BRUSHLESS MOTOR PCB DRIVER	1	Various
48	PCB FANS	2	Various
49	DISPLAY MEMBRANE	1	LEXAN (PC)
50	REDUCTOR FAN	1	Various
51	MOTOR BLDC SUPPORT	1	Aluminium
52	TIMING BELT RPP 450 5M 09	1	Various
53	SEEGER RING FOR BORES ø27	1	Elastic steel
PIECE Nr	PART NAME	QTY	MATERIAL

TAURUS

FOOD PROCESSOR ROWZER PLUS

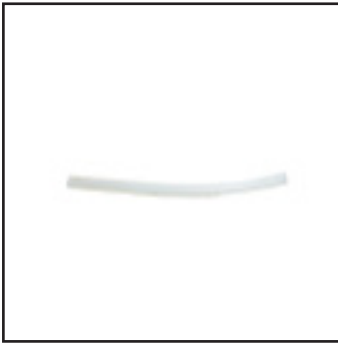
Code: 926012000

6KH

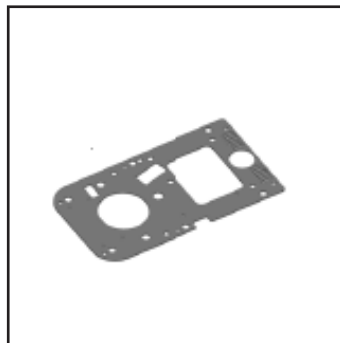
taurus

FOOD PROCESSOR ROWZER PLUS
Code: 926012000
6KH

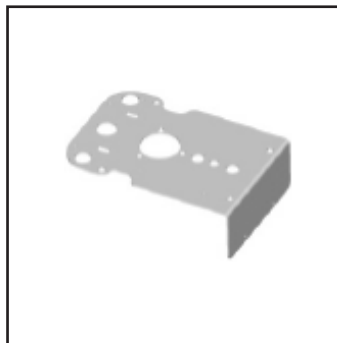
Eploded 1/6



003976000



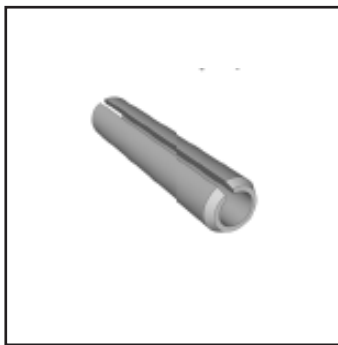
011561000



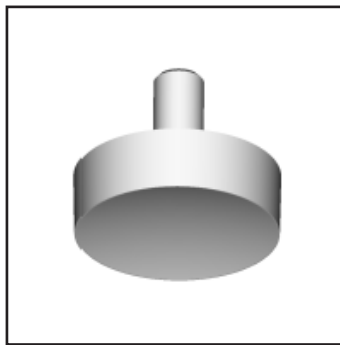
011562000



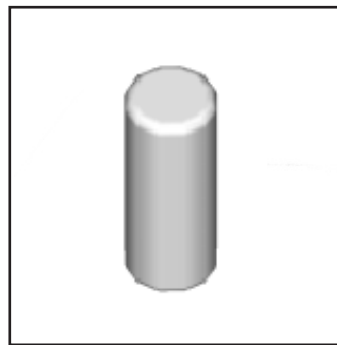
012016000



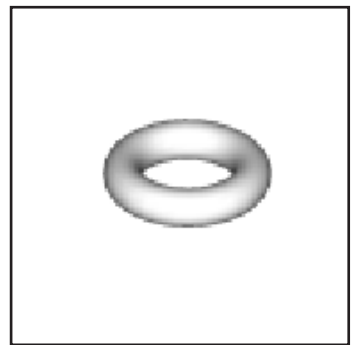
01201800



025138000



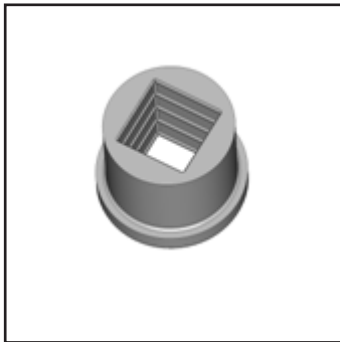
025506000



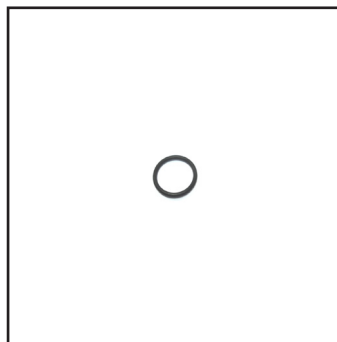
026066000



02608300



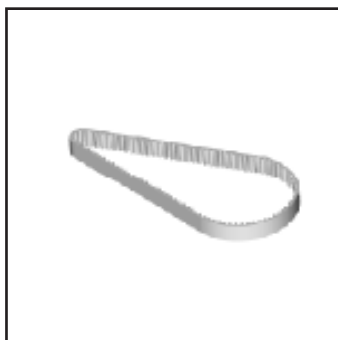
026316000



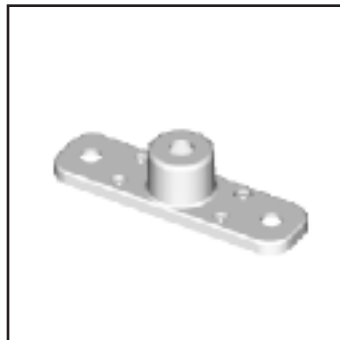
026405000



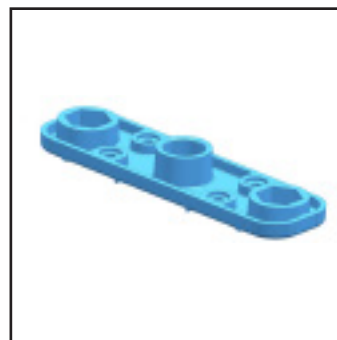
026409000



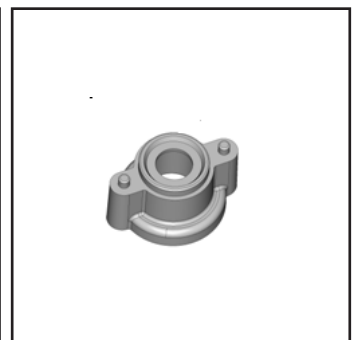
026410000



02701500



027016000



027017000

taurus

FOOD PROCESSOR ROWZER PLUS
Code: 926012000
6KH

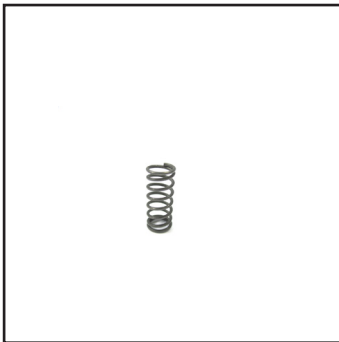
Exploded 2/6



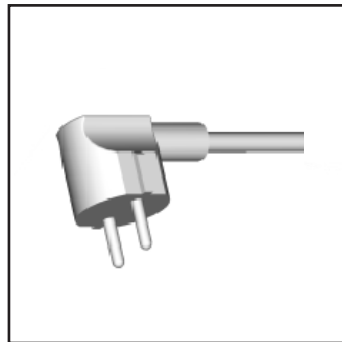
027028000

027029000

027031000



036081000



039308000



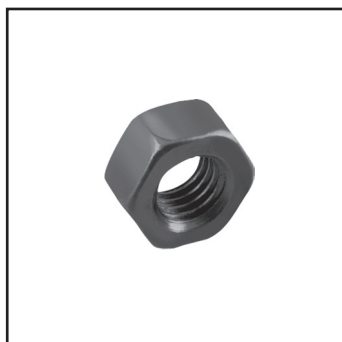
040722000



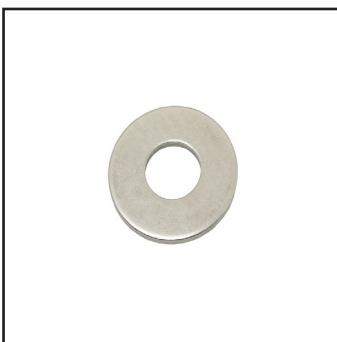
040723000



040725000



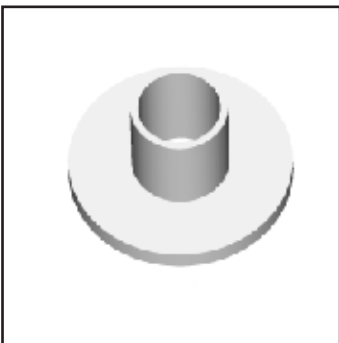
040937000



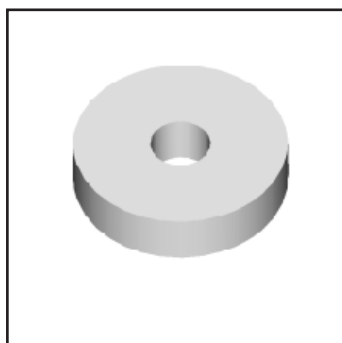
041305000



041306000



041309000



041310000



041405000



042160000

taurus

FOOD PROCESSOR ROWZER PLUS
Code: 926012000
6KH

Exploded 3/6



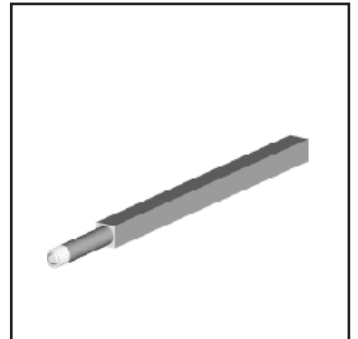
042193000



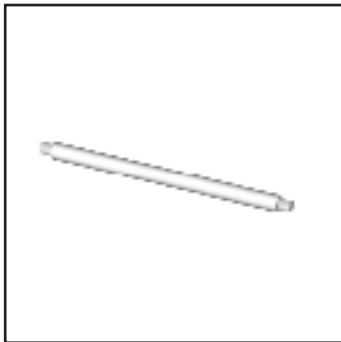
042194000



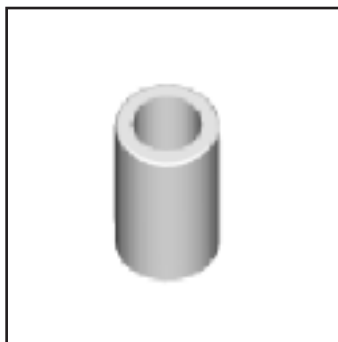
042195000



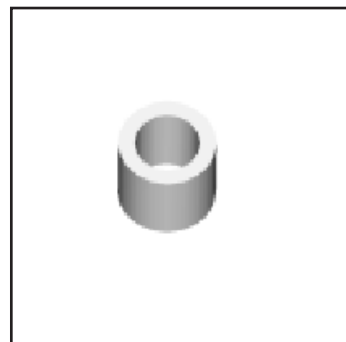
044354000



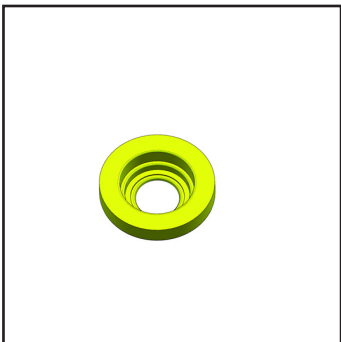
044355000



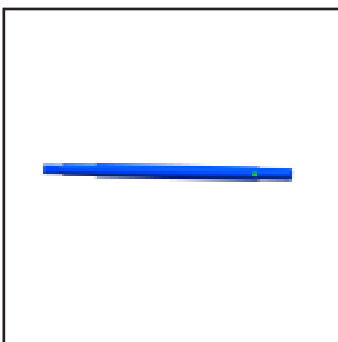
044430000



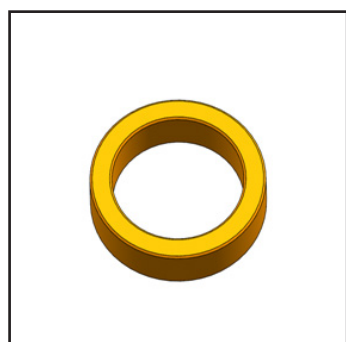
044431000



044435000



044437000



045012000



045013000



045002000

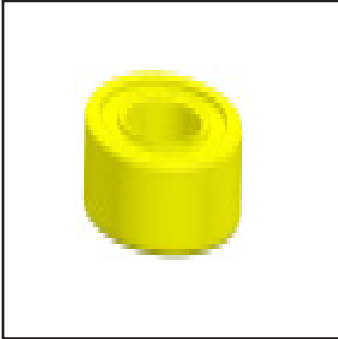


045505000

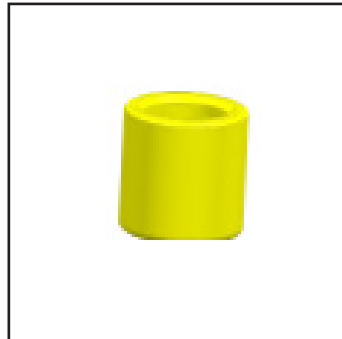
taurus

FOOD PROCESSOR ROWZER PLUS
Code: 926012000
6KH

Exploded 4/6



045506000



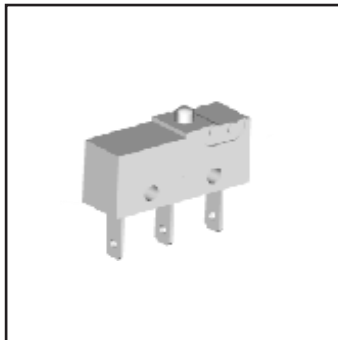
045507000



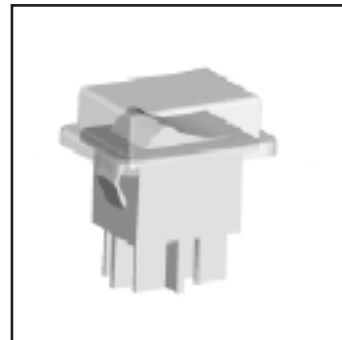
045508000



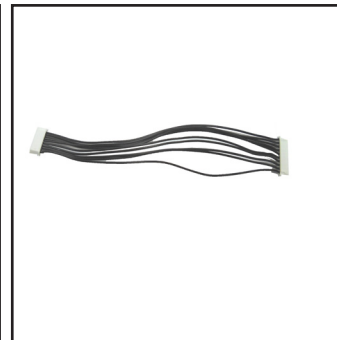
053008000



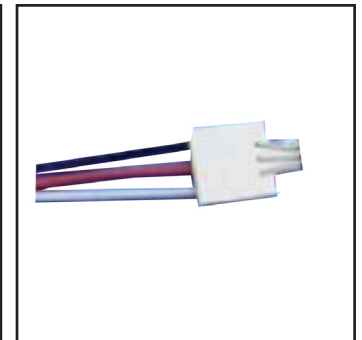
069217000



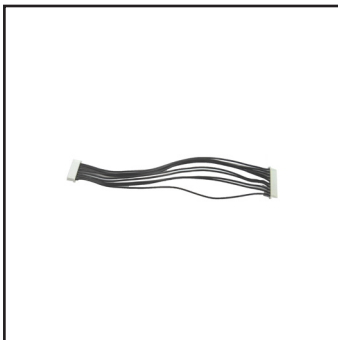
069347000



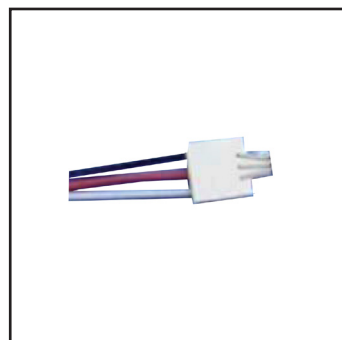
069357000



069395000



069404000



069405000



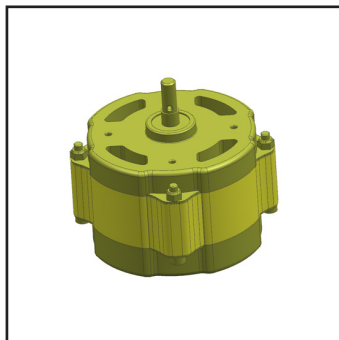
069406000



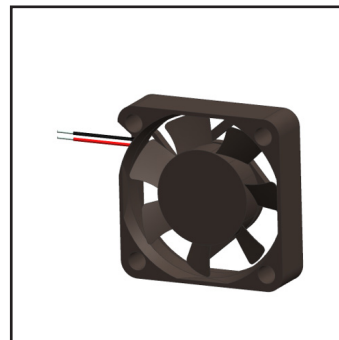
069407000



074092000



082462000



082464000

taurus

FOOD PROCESSOR ROWZER PLUS

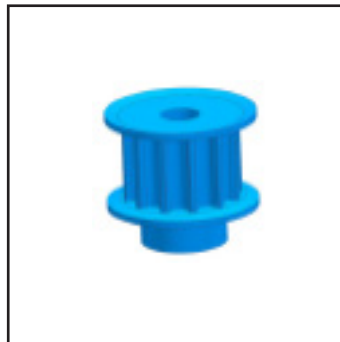
Code: 926012000

6KH

Exploded 5/6



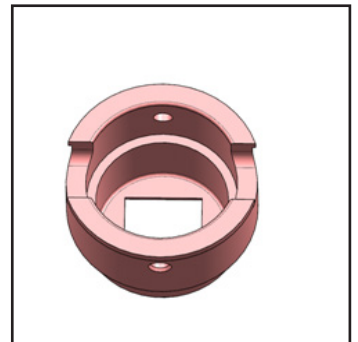
126056000



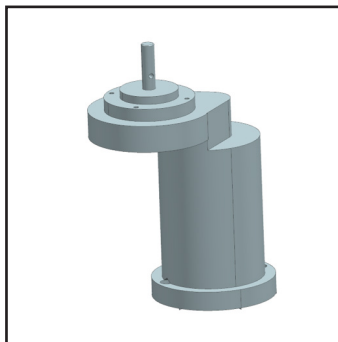
127007000



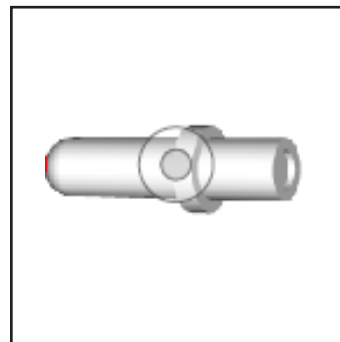
127014000



144436000



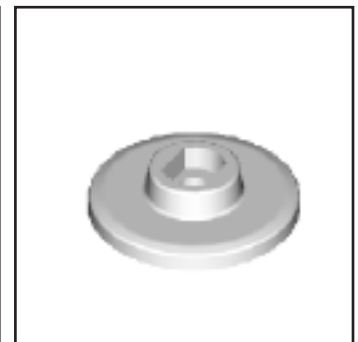
182212000



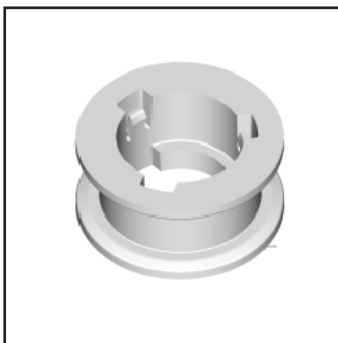
222455000



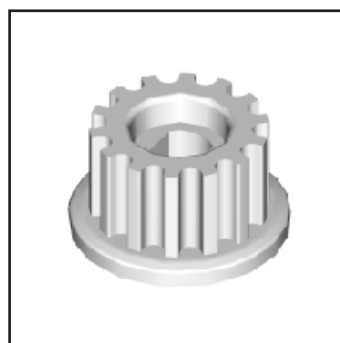
222456000



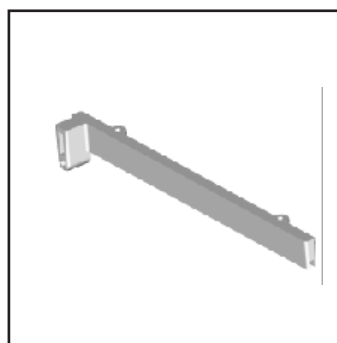
222457000



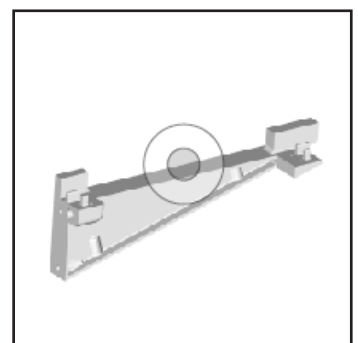
222467000



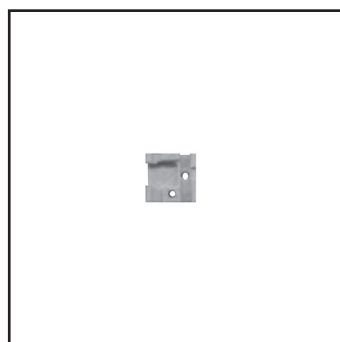
222468000



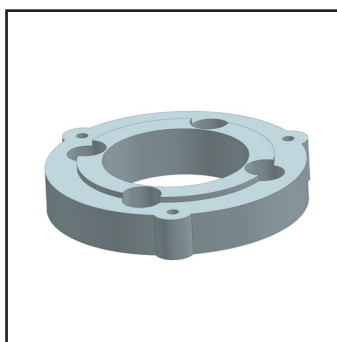
222469000



222470000



222486000



222498000

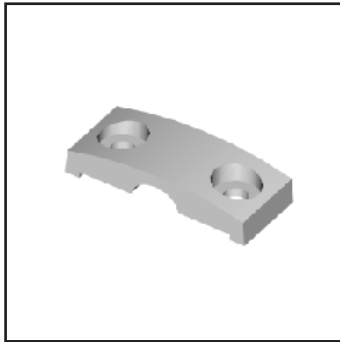
taurus

FOOD PROCESSOR ROWZER PLUS

Code: 926012000

6KH

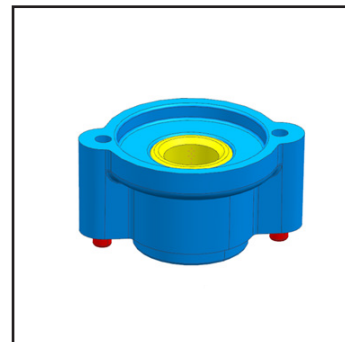
Exploded 6/6



222307000



23101100



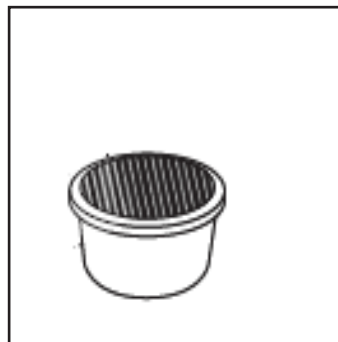
328316000



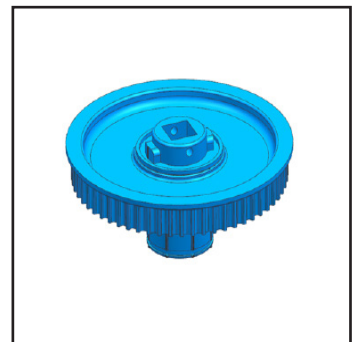
328317000



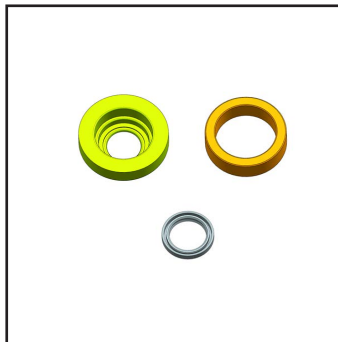
328318000



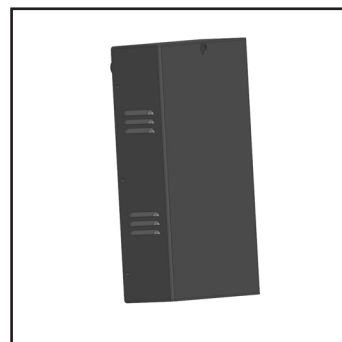
374803000



374832000



374847000



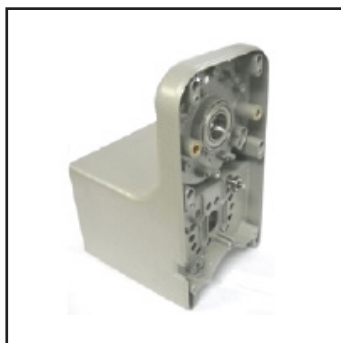
374857000



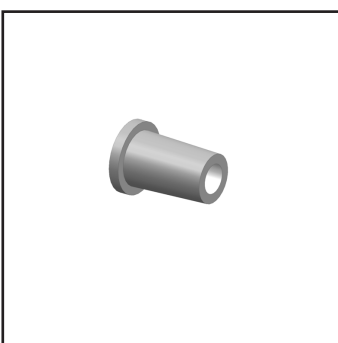
376000000



376001000



374297000



U200012000



065201000

CODE	DESCRIPTION
003976000	SILICONE TUBE D5X8
011561000	LOWER CHASSIS
011562000	UPPER CHASSIS
012016000	SPRING PIN 3x16
012018000	SPRING PIN 3x26 DIN1481
025138000	RUBBER FEET HEIGH ADJUSTABLE
025506000	NEODIMIUM MAGNET D4X10
026066000	O-RING DECOMPRESSION BUTTON
026083000	DOUBLE LIP SEAL SPRING FKM
026316000	RUBBER GASKET SHAFT
026405000	O-RING 15,6x1,78 NBR 70
026409000	TOOTHED BELT HTD-500-5M-09
026410000	TOOTHED BELT HTD-450-5M-09
027015000	BLADE SHAFT UPPER SUPPORT
027016000	BLADE SHAFT LOWER SUPPORT
027017000	THREADED ROD BEARING SUPPORT
027028000	UPPER BODY ROWZER PLUS
027029000	BASE BODY
027031000	LOWER BODY ROWZER PLUS
036081000	STAINLESS STEAL SPRING
039308000	SCHUKO PLUG POWER CORD
040722000	SELF-LOCKING FLANGE NUT M-6 DIN 6923
040723000	SELF-LOCKING FLANGE NUT M-8 DIN 9623
040725000	HEX NUT DIN934 FINE THREAD 12X1.25
040937000	HEX NUT M-10 DIN 934
041305000	WASHER INOX 4.2X12X0,5
041306000	WASHER INOX 5,2X15X0,5
041309000	BUSH TI 00100201140 ISC
041310000	WASHER TU 00100201448 ISC
041405000	ADE 5 DIN 6797
042160000	CLIP 7 DIN 6799 V
042193000	SEEGER RING 029
042194000	SEEGER RING 062
042195000	SPRING PIN 3x6
044354000	BLADE SHAFT
044355000	CHASSIS COLUMN
044430000	BUSH 10x15x27,5
044431000	BUSH 10x15x12,5
044435000	BUSH SINTERED BEARING SUPPORT
044437000	THREADED ROD WITH MAGNET M-12X1
045012000	OLITE SINTERED BEARING 30x40x13
045013000	BLDC MOTOR COUPLING
045502000	BALL BEARING 8 X 22 X 7

CODE	DESCRIPTION
045505000	SINGLE-D THRUST BALL BEARING 10x26x11
045506000	OILITE SINTERED BEARING 10x15x15
045507000	OILITE SINTERED BEARING 15x20x15
045508000	DOUBLE-D THRUST BALL BEARING 10x32x2
053008000	CHOKE COIL
069217000	MICROSWITCH
069347000	ROCK SWITCH WITH COVER
069357000	WIRE CONNECTION CONTROL PCB-POWER PCB
069395000	PCB SHAFT TURN
069404000	PCB POWER CONNECTOR - DRIVER BLDC
069405000	PCB SPEED GEARBOX ROWZER PLUS
069406000	PCB CONTROL ROWZER PLUS
069407000	PCB POWER ROWZER PLUS
074092000	AIRPUMP AIRPO D2028B
082462000	IPM MOTOR WITH DRIVER 230V
082464000	COOL FAN
126056000	PULLEY HTD-24-5M-09
127007000	PULLEY HTD-12-5M-09
127014000	SHAFT BEARING SUPPORT
144436000	BUSH PULLEY HTD60
182212000	MOTOR SHAFT
222455000	MICROSWITCH BUTTON
222456000	AIR FILTER HOLDER
222457000	TOOTHED PULLEY WALLONE
222467000	ROLLER RECUCTOR SAVOY
222468000	TOOTHED PULLEY HTD-14-5M
222469000	PCB POWER SUPPORT
222486000	PCB SHAFT TURN SUPPORT
222498000	SHAFT MOTOR COUPLING
223307000	FLANGE FIXING POWER CORD
231011000	DECOMPRESSION PUSHBUTTON
233036000	JAR HOLDER
328316000	THREADED ROD BEARING SUPPORT SET
328317000	THREADED ROD SUPPORT SET
328318000	JAR HOLDER SET
374803000	AIR FILTER SET
374832000	PULLEY HTD 60-5M SET
374847000	SET BEARING WITH SEAL
374857000	DRIVER BOX SET
376000000	BLADE SHAFT SET
376001000	SET BELT TENSIONER
476297000	SET ROWZER PLUS BODY
U200012000	LED THROUGH 1015-1036-1084
065201000	ADHESIVE PANEL ROWZER PLUS

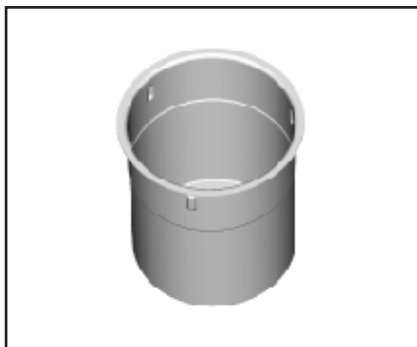
taurus

FOOD PROCESSOR ROWZER PLUS

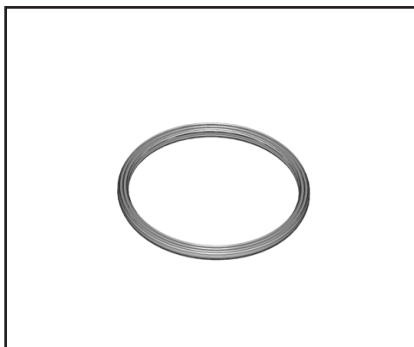
Code: 926012000

6KH

Accessoris



011563000



026068000



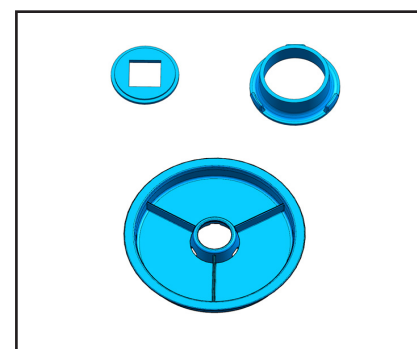
027027000



222475000



222480000



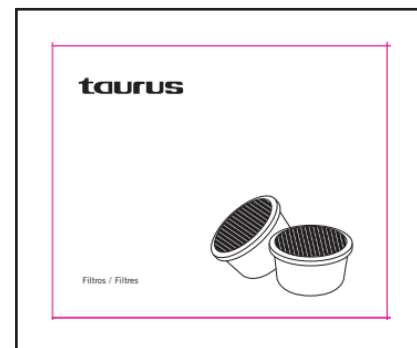
328320000



374811000



999179000



999182000

Codes Accesoris

CODE	DESCRIPTION
011563000	BEAKER
026068000	LID RUBBER SEAL
027027000	TRAY
222475000	JAR
222480000	LID
328320000	LID SET
374811000	BLADE SET
999179000	ACCESORY SST JAR (4LZ)
999182000	ACC ROWZER (CARBON FILTER)

ANOMALY	REPAIR
It does not start	Check that it is connected to the mains. Check that the main switch is in the "ON" position
It does not detect the jar	Check that the jar is properly positioned and has correctly reached 90° from the start Check that the jar lid has been fitted. Check that no left-over frozen food is hindering the positioning of the jar. Check remains of frost in the ice cream glass.
The appliance returns to start without processing the frozen food	The device is protected by restarting possible overvoltages in the network or electrostatic discharges. In this case, re-establish the process that was being carried out.
The appliance takes a very long time to make the first portion	Frozen food very soft or a temperature over -18°C that the appliance cannot detect.
The jar opens during processing of the frozen food	Check that the jar lid has been fitted. Check that the blade is correctly positioned.
Strong noise when processing ice cream	The blade may have fallen due to poor positioning. Stop the appliance quickly. If the blade or shaft of the machine has been damaged, consult an authorized service center.
ERROR 1. MOTOR DOES NOT WORK	The blade motor does not work. Allow the appliance to case of overheating. In case of persisting the error, go to a specialized technical service
ERROR 2. MOTOR OVERLOADcream that	The capacity of the device has been exceeded. Check the ice is being processed and its presents an excess of freezing. In case of persisting the error, go to a specialized technical service
ERROR 3. MOTOR AXLE / BLADE	The axis of the device has been locked. Check the condition blade, check the ice cream to be processed and this error may appear when processing frozen water. In case of persisting the error, go to a specialized technical service
ERROR 4. MOTOR OVERLOAD	Motor blade blocked. Check hardness of the ice cream and the of the blade.

Technical Specifications

Mod:	Rowzer Plus	
Typ:	SOFTICE PLUS	IPx1
Voltage:	220-240V 50/60Hz	
Potency:	1000W	

Wiring Diagram

