
DESPIECE TECNICO

Marmita eléctrica baño maría
Electric indirect boiling pans
Marmites électriques système bain-marie
Elektro-kochkessel indirekt beheizt
Pentole riscaldamento elettrico indiretto
Marmita eléctrica de banho-maria

GAMA 900

Modelos:

ME9-10 BM

ME9-15 BM

ME9-15 BM 316

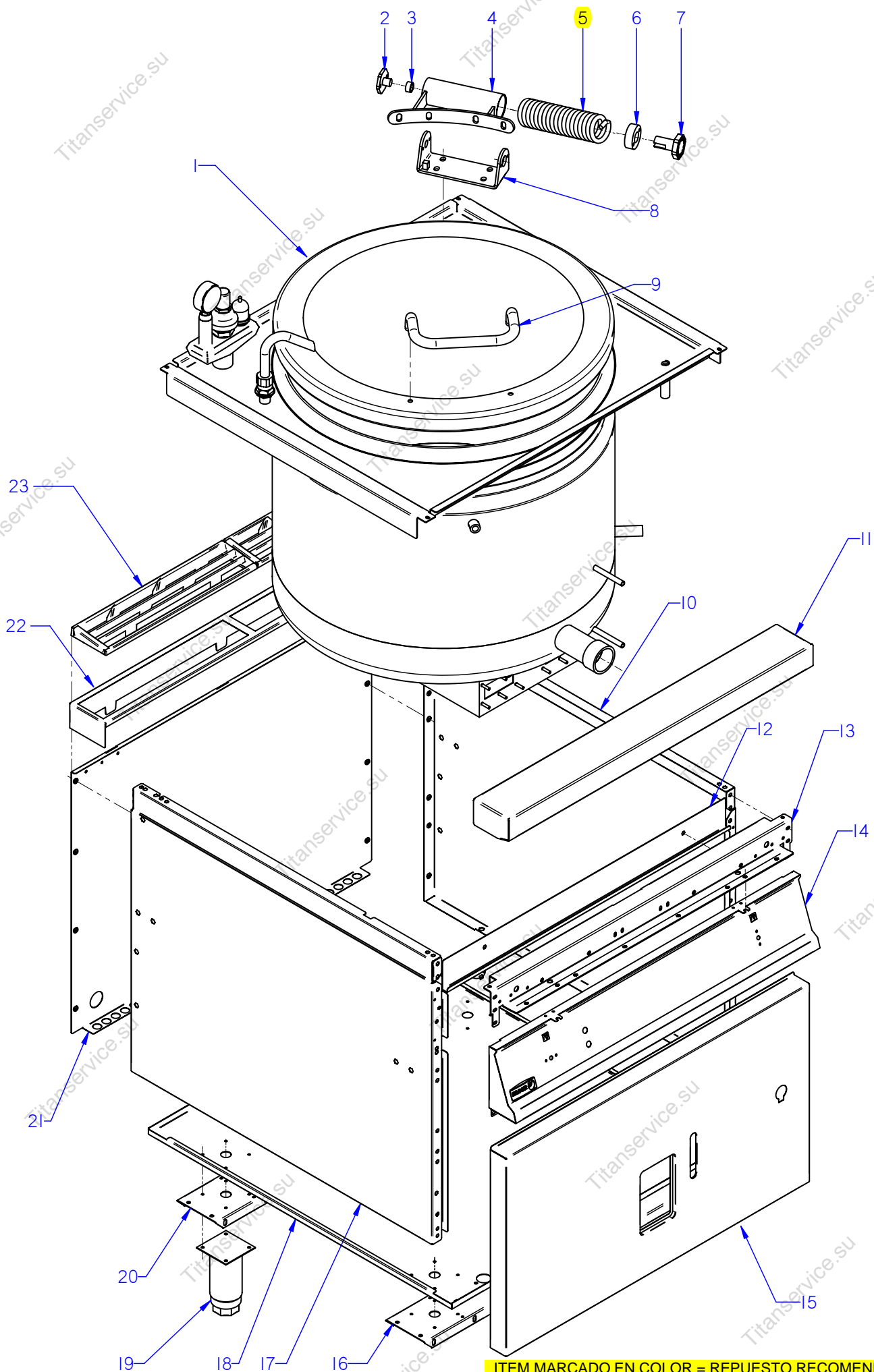
Marzo 2009 March

Revisado Mayo 2014 May Revised

FAGOR



F A G O R I N D U S T R I A L



ITEM MARCADO EN COLOR = REPUESTO RECOMENDADO
COLOURED ITEM = RECOMMENDED SPARE PART

| N plano | Firma | Fecha | Aparato | MUEBLE | Lamina | Fagor Industrial S.Coop. FAGOR |
|---------|--------------------|---------|------------------------------|--------|--------|---------------------------------------|
| C-2265 | <i>[Signature]</i> | 2009-03 | MARMITA ME9-10 BM; ME9-15 BM | | 1 | Oñate |

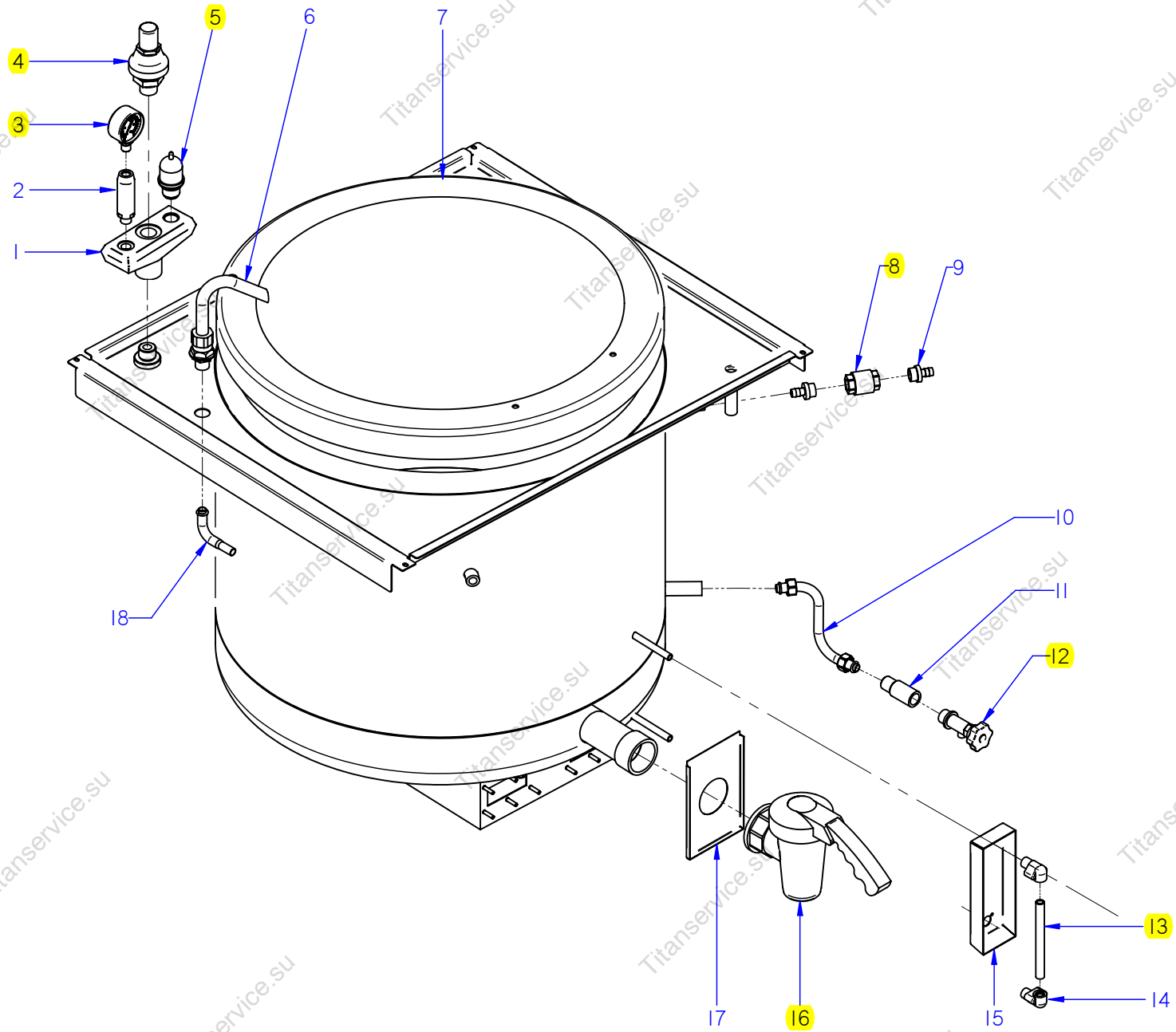
| MOD. | MARMITAS GAMA 900 / PAN 900 RANGE | | | ZONA | MUEBLE / UNIT | | | | | PLANO | C-2265 |
|------|-----------------------------------|------------------------------|----------------------------|-----------|---------------|-----------|-------------|---------------|--|-------|----------------------|
| ITEM | CODIGO | DENOMINACION | TEXTO | ME9-10 BM | ME9-10 BM S | ME9-15 BM | ME9-15 BM S | ME9-15 BM 316 | | | NOTAS |
| 1 | S166133000 | CUBA+TAPA ME9-10 BM | TUB+COVER MG9-10 | 1 | 1 | — | — | — | | | ELIMINADO 03,01,11 |
| 1 | S166145000 | CUBA+TAPA ME9-10 BM | TUB+COVER MG9-10 | 1 | 1 | — | — | — | | | INTRODUCIDO 03,01,11 |
| 1 | S236121000 | CUBA+TAPA ME9-15 BM | TUB+COVER ME9-15 BM | — | — | 1 | 1 | — | | | ELIMINADO 03,01,11 |
| 1 | S236131000 | CUBA+TAPA ME9-15 BM | TUB+COVER ME9-15 BM | — | — | 1 | 1 | — | | | INTRODUCIDO 03,01,11 |
| 1 | S236126000 | CUBA+TAPA ME9-15 BM 316 | TUB+COVER ME9-15 BM 316 | — | — | — | — | 1 | | | ELIMINADO 03,01,11 |
| 1 | S236136000 | CUBA+TAPA ME9-15 BM 316 | TUB+COVER ME9-15 BM 316 | — | — | — | — | 1 | | | INTRODUCIDO 03,01,11 |
| S/Nº | S016101000 | FILTRO DE CUBA | TUB FILTER | 1 | 1 | 1 | 1 | 1 | | | |
| | S036117000 | SOPORTE FILTRO | FILTER SUPPORT | 2 | 2 | 2 | 2 | 2 | | | |
| | Q412000000 | REMACHE TUBULAR 4x8 | TUBULAR RIVET 4x8 | 8 | 8 | 8 | 8 | 8 | | | |
| 2 | S116119000 | GIRO DE ASA | HANDLE ROTATION | 1 | 1 | 1 | 1 | 1 | | | |
| | Q012041000 | TORNILLO EXAGONAL M6x10 A304 | HEXAGONAL BOLT M6x10 A304 | 2 | 2 | 2 | 2 | 2 | | | |
| 3 | S116126000 | COJINETE CILINDRICO | CYLINDRICAL BEARING | 1 | 1 | 1 | 1 | 1 | | | |
| 4 | S036143000 | BISAGRA COMPLETA | COMPLETE HINGE | 1 | 1 | 1 | 1 | 1 | | | |
| 5 | S116121000 | RESORTE TAPA 07199 | SPRING COVER 07199 | 1 | 1 | 1 | 1 | 1 | | | |
| 6 | S116118000 | CASQUILLO | BUSHING | 1 | 1 | 1 | 1 | 1 | | | |
| 7 | S116120000 | TENSOR MUELLE | TENSIONING SPRING | 1 | 1 | 1 | 1 | 1 | | | |
| | Q012042000 | TORNILLO EXAGONAL M6x15 | HEXAGONAL BOLT M6x15 | 2 | 2 | 2 | 2 | 2 | | | |
| | Q262040000 | ARANDELA GROW. A6 A304 | WASHER GROW. A6 A304 | 2 | 2 | 2 | 2 | 2 | | | |
| 8 | S036131000 | SOPORTE BISAGRA COMPLETA | COMPLETE HINGE SUPPORT | 1 | 1 | 1 | 1 | — | | | ELIMINADO 03.05.10 |
| 8 | S226136000 | SOPORTE BISAGRA COMPLETA | COMPLETE HINGE SUPPORT | 1 | 1 | 1 | 1 | — | | | INTRODUCIDO 03.05.10 |
| 8 | S096124000 | SOPORTE BISAGRA COMPLET. 316 | COMPLETE HINGE SUPPORT | — | — | — | — | 1 | | | |
| 8 | S096124000 | SOPORTE BISAGRA COMPLET. 316 | COMPLETE HINGE SUPPORT | — | — | — | — | 1 | | | ELIMINADO 05,11,12 |
| 8 | 12047085 | SOPOR. BISAGRA AISI ELECTROP | HINGE SUPP. AISI ELECTROP | — | — | — | — | 1 | | | INTRODUCIDO 05,11,12 |
| S/Nº | S026102000 | REFUERZO BISAGRA MARMITAS | COOK. POT HINGE REINFORCE. | 1 | 1 | 1 | 1 | 1 | | | |
| | Q232050000 | ARANDELA A8 | WASHER A8 | 4 | 4 | 4 | 4 | 4 | | | |
| | Q262050000 | ARANDELA GROW. A8 A304 | WASHER GROW. A8 A304 | 4 | 4 | 4 | 4 | 4 | | | |
| | Q212051000 | TUERCA SOMBRERO M8 | COWL NUT M8 | 4 | 4 | 4 | 4 | 4 | | | |
| 9 | S036123000 | ASA DE TAPA | COVER HANDLE | 1 | 1 | 1 | 1 | 1 | | | |
| | Q012053000 | TORNILLO EXAGONAL M8x20 A304 | HEXAGONAL BOLT M8x20 A304 | 2 | 2 | 2 | 2 | 2 | | | |
| | Q302027000 | ARANDELA 25x8,4x2 | WASHER 25X8.4X2 | 2 | 2 | 2 | 2 | 2 | | | |
| | | | | | | | | | | | |

| MOD. MARMITAS GAMA 900 / PAN 900 RANGE | | | | | | | | | | | | |
|--|------------|------------------------------|----------------------------|-----------|-------------|-----------|-------------|---------------|--|--|--------|----------------------|
| ZONA | | | MUEBLE / UNIT | | | | | PLANO | | | C-2265 | |
| ITEM | CODIGO | DENOMINACION | TEXTO | ME9-10 BM | ME9-10 BM S | ME9-15 BM | ME9-15 BM S | ME9-15 BM 316 | | | | NOTAS |
| 10 | X162814000 | PANEL LATERAL DERECHO G900 | RIGHT SIDE PANEL G900 | 1 | | 1 | | 1 | | | | |
| 10 | S142806000 | PANEL LATERAL DERECH. G9-00S | RIGHT SIDE PANEL G9-00S | | 1 | | | | | | | |
| 10 | S222808000 | PANEL LATERAL DERECH. G9-00S | RIGHT SIDE PANEL G9-00S | | | | 1 | | | | | |
| | Q221343000 | REMACHE EXAGONAL M6 | HEXAGONAL RIVET M6 | 11 | | 11 | | 11 | | | | |
| | Q221342000 | REMACHE EXAGONAL M5 | HEXAGONAL RIVET M5 | 6 | 6 | 6 | 6 | 6 | | | | |
| | Q012053000 | TORNILLO EXAGONAL M8x20 A304 | HEXAGONAL BOLT M8x20 A304 | 2 | | 2 | | 2 | | | | |
| | Q012031000 | TORNILLO EXAGONAL M5x10 A304 | HEXAGONAL BOLT M5x10 A304 | | 2 | | 2 | | | | | |
| 11 | S105402000 | ANTERIOR DE MESA 1M | BENCH FRONT 1M | 1 | | 1 | | 1 | | | | |
| | Q152004000 | TORNILLO APLAST. M5x13 A304 | MUSHROOM HEAD BOLT M5x13 A | 2 | | 2 | | 2 | | | | |
| | Q302022000 | ARANDELA 16x6x1,2 A304 | WASHER 16x6x1.2 A304 | 2 | | 2 | | 2 | | | | |
| 12 | S162609000 | CANALETA RECOGE-AGUAS | WATER COLLECT CHANNEL | 1 | 1 | 1 | 1 | 1 | | | | |
| | Q221342000 | REMACHE EXAGONAL M5 | HEXAGONAL RIVET M5 | 2 | 2 | 2 | 2 | 2 | | | | |
| | Q152004000 | TORNILLO APLAST. M5x13 A304 | MUSHROOM HEAD BOLT M5x13 A | 2 | 2 | 2 | 2 | 2 | | | | |
| 13 | S222606000 | ESCUADRA INTE. ANT. MESA 1M | BENCH FRONT INT BRACKET 1M | 1 | 1 | 1 | 1 | 1 | | | | |
| | Q221342000 | REMACHE EXAGONAL M5 | HEXAGONAL RIVET M5 | 7 | 7 | 7 | 7 | 7 | | | | |
| | Q012032000 | TORNILLO EXAGONAL M5x15 | HEXAGONAL BOLT M5x15 | 6 | 6 | 6 | 6 | 6 | | | | |
| 14 | S162807000 | PORTAMANDOS MARMITA ELECT. | ELECT. PAN CONTROL HOLDER | 1 | 1 | 1 | 1 | 1 | | | | |
| | Q152004000 | TORNILLO APLAST. M5x13 A304 | MUSHROOM HEAD BOLT M5x13 A | 4 | 4 | 4 | 4 | 4 | | | | |
| | Q221343000 | REMACHE EXAGONAL M6 | HEXAGONAL RIVET M6 | 2 | 2 | 2 | 2 | 2 | | | | |
| | Q151336000 | TORNILLO SOPORTE GUIAS | GUIDE SUPPORT BOLT | 2 | 2 | 2 | 2 | 2 | | | | |
| | Q302022000 | ARANDELA 16x6x1,2 A304 | WASHER 16x6x1.2 A304 | 2 | 2 | 2 | 2 | 2 | | | | |
| | U022836000 | ESCUDO FAGOR | FAGOR EMBLEM | 1 | 1 | 1 | 1 | 1 | | | | |
| | Q221023000 | CLIP SUJECIÓN RÁPIDA Ø 5 | RAPID FASTENING CLIP Ø5 | 2 | 2 | 2 | 2 | 2 | | | | |
| 15 | S162806000 | PANEL FRONTAL ME9-10 BM | FRONT PANEL ME9-10 BM | 1 | | | | | | | | |
| 15 | S162809000 | PANEL FRONTAL ME9-10 BM S | FRONT PANEL ME9-10 BM S | | 1 | | | | | | | |
| 15 | S232806000 | PANEL FRONTAL ME9-15 BM | FRONT PANEL ME9-15 BM | | | 1 | 1 | 1 | | | | |
| | Q012042000 | TORNILLO EXAGONAL M6x15 | HEXAGONAL BOLT M6x15 | 2 | 2 | 2 | 2 | 2 | | | | |
| | Q302022000 | ARANDELA 16x6x1,2 A304 | WASHER 16x6x1.2 A304 | 2 | 2 | 2 | 2 | 2 | | | | |
| 16 | S102610000 | LISTON SOPORTE PATAS ANT. 1M | FRONT LEG SUPPORT STRIP 1M | 1 | | 1 | | 1 | | | | ELIMINADO 29.04.13 |
| 16 | 12005781 | LISTON SOPORTE PATAS ANT. 1M | FRONT LEG SUPPORT STRIP 1M | 1 | | 1 | | 1 | | | | INTRODUCIDO 29.04.13 |
| | | | | | | | | | | | | |

| MOD. | MARMITAS GAMA 900 / PAN 900 RANGE | | ZONA | MUEBLE / UNIT | | | | | PLANO | C-2265 | | |
|------|-----------------------------------|-------------------------------|-----------------------------|---------------|-------------|-----------|-------------|---------------|-------|--------|--|----------------------|
| ITEM | CODIGO | DENOMINACION | TEXTO | ME9-10 BM | ME9-10 BM S | ME9-15 BM | ME9-15 BM S | ME9-15 BM 316 | | | | NOTAS |
| 17 | X162813000 | PANEL LATERAL IZQUIERDO G900 | LEFT SIDE PANEL G900 | 1 | | 1 | | 1 | | | | |
| 17 | S142805000 | PANEL LATERAL IZQUIERD. G900S | LEFT SIDE PANEL G900S | | 1 | | | | | | | |
| 17 | S222807000 | PANEL LATERAL IZQUIERD. G915S | LEFT SIDE PANEL G915S | | | | 1 | | | | | |
| | Q221343000 | REMACHE EXAGONAL M6 | HEXAGONAL RIVET M6 | 11 | | 11 | | 11 | | | | |
| | Q221342000 | REMACHE EXAGONAL M5 | HEXAGONAL RIVET M5 | 6 | 6 | 6 | 6 | 6 | | | | |
| | Q012053000 | TORNILLO EXAGONAL M8x20 A304 | HEXAGONAL BOLT M8x20 A304 | 2 | | 2 | | 2 | | | | |
| | Q012031000 | TORNILLO EXAGONAL M5x10 A304 | HEXAGONAL BOLT M5x10 A304 | | 2 | | 2 | | | | | |
| 18 | S162617000 | BASE INFERIOR ME900 | LOWER BASE | 1 | | 1 | | 1 | | | | ELIMINADO 29.04.13 |
| 18 | 12006994 | BASE INFERIOR ME900 AD | LOWER BASE AD | 1 | | 1 | | 1 | | | | INTRODUCIDO 29.04.13 |
| 18 | S162618000 | BASE INFERIOR ME9-10 S | LOWER BASE ME9-10 S | | 1 | | | | | | | ELIMINADO 24,11,11 |
| 18 | 12041733 | BASE INFERIOR ME9-10 S | LOWER BASE ME9-10 S | | 1 | | | | | | | INTRODUCIDO 24,11,11 |
| 18 | S362810000 | BASE INFERIOR S | LOWER BASE S | | | | 1 | | | | | ELIMINADO 24,11,11 |
| 18 | 12041739 | BASE INFERIOR ME9-15 S | LOWER BASE ME9-15 S | | | | 1 | | | | | INTRODUCIDO 24,11,11 |
| | Q221343000 | REMACHE EXAGONAL M6 | HEXAGONAL RIVET M6 | 2 | 2 | 2 | 2 | 2 | | | | |
| | Q162040000 | TUERCA EXAGONAL M6 | HEXAGONAL NUT M6 | 4 | | 4 | | 4 | | | | |
| 19 | X260151000 | PATA REGULABLE | ADJUSTABLE LEG | 4 | | 4 | | 4 | | | | |
| | Q411304000 | REMACHE AVIBULB Ø4,8 | AVIBULB RIVET Ø4.8 | 16 | | 16 | | 16 | | | | |
| 20 | S102611000 | LISTON SOPORTE PATAS POS.1M | REAR LEG SUPPORT STRIP 1M | 1 | | 1 | | 1 | | | | ELIMINADO 29.04.13 |
| 20 | 12005782 | LISTON SOPORTE PATAS POS.1M | REAR LEG SUPPORT STRIP 1M | 1 | | 1 | | 1 | | | | INTRODUCIDO 29.04.13 |
| | Q012042000 | TORNILLO EXAGONAL M6x15 | HEXAGONAL BOLT M6x15 | 8 | | 8 | | 8 | | | | |
| | Q302022000 | ARANDELA 16x6x1,2 A304 | WASHER 16x6x1.2 A304 | 8 | | 8 | | 8 | | | | |
| | Q232040000 | ARANDELA A6 | WASHER A6 | 8 | | 8 | | 8 | | | | |
| 21 | U562853000 | PANEL POSTERIOR 1M G9-00 | REAR PANEL 1M G9-00 | 1 | | 1 | | 1 | | | | |
| 21 | X242817000 | PANEL POSTERIOR 1M G9-10S | REAR PANEL 1M G9-10S | | 1 | | | | | | | |
| 21 | S372816000 | PANEL POSTERIOR 1M G9-15 S | REAR PANEL 1M G9-15 S | | | | 1 | | | | | |
| | Q419005000 | REMACHE 4x8 ALMG3 / ALUMINIO | RIVET 4X8 ALMG3 / ALUMINIUM | 8 | 8 | 8 | 8 | 8 | | | | |
| 22 | R205439000 | SOPORTE EMBELLECEDOR 1M | TRIM SUPPORT 1M | 1 | 1 | 1 | 1 | | | | | |
| 22 | R205439000 | SOPORTE EMBELLECEDOR 1M | TRIM SUPPORT 1M | | | | | 1 | | | | ELIMINADO 01.03.10 |
| 23 | R205425000 | EMBELLECEDOR ESMALTE | ENAMEL TRIM | 2 | 2 | 2 | 2 | | | | | |
| 23 | R205425000 | EMBELLECEDOR ESMALTE | ENAMEL TRIM | | | | | 2 | | | | ELIMINADO 01.03.10 |
| 23 | S095412000 | EMBELLEC. CHIMENEA ME 304 | FIREPLACE TRIM ME 304 | | | | | 1 | | | | INTRODUCIDO 01.03.10 |

| | | | | | | |
|---------|--|---------|-------------------------------|----------|--------|---------------------------------|
| N plano | Firma | Fecha | Aparato | VALVULAS | Lamina | Fogor Industrial S. Coop. FAGOR |
| C-2266 |  | 2009-03 | MARMITA ME9-10 BM, ME 9-15 BM | | 2 | |

ITEM MARCADO EN COLOR = REPUESTO RECOMENDADO
COLOURED ITEM = RECOMMENDED SPARE PART

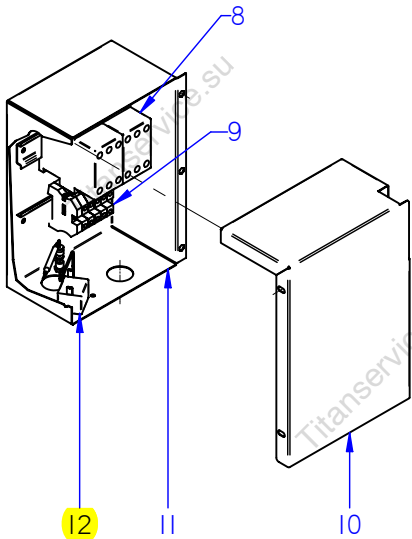
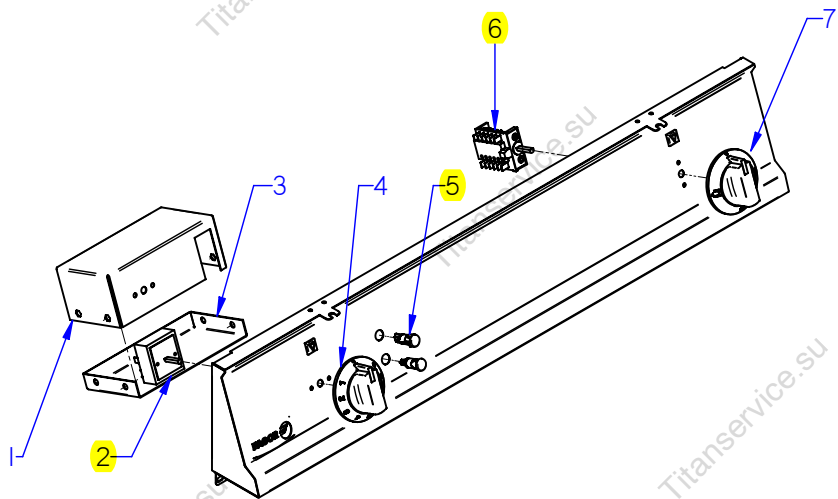
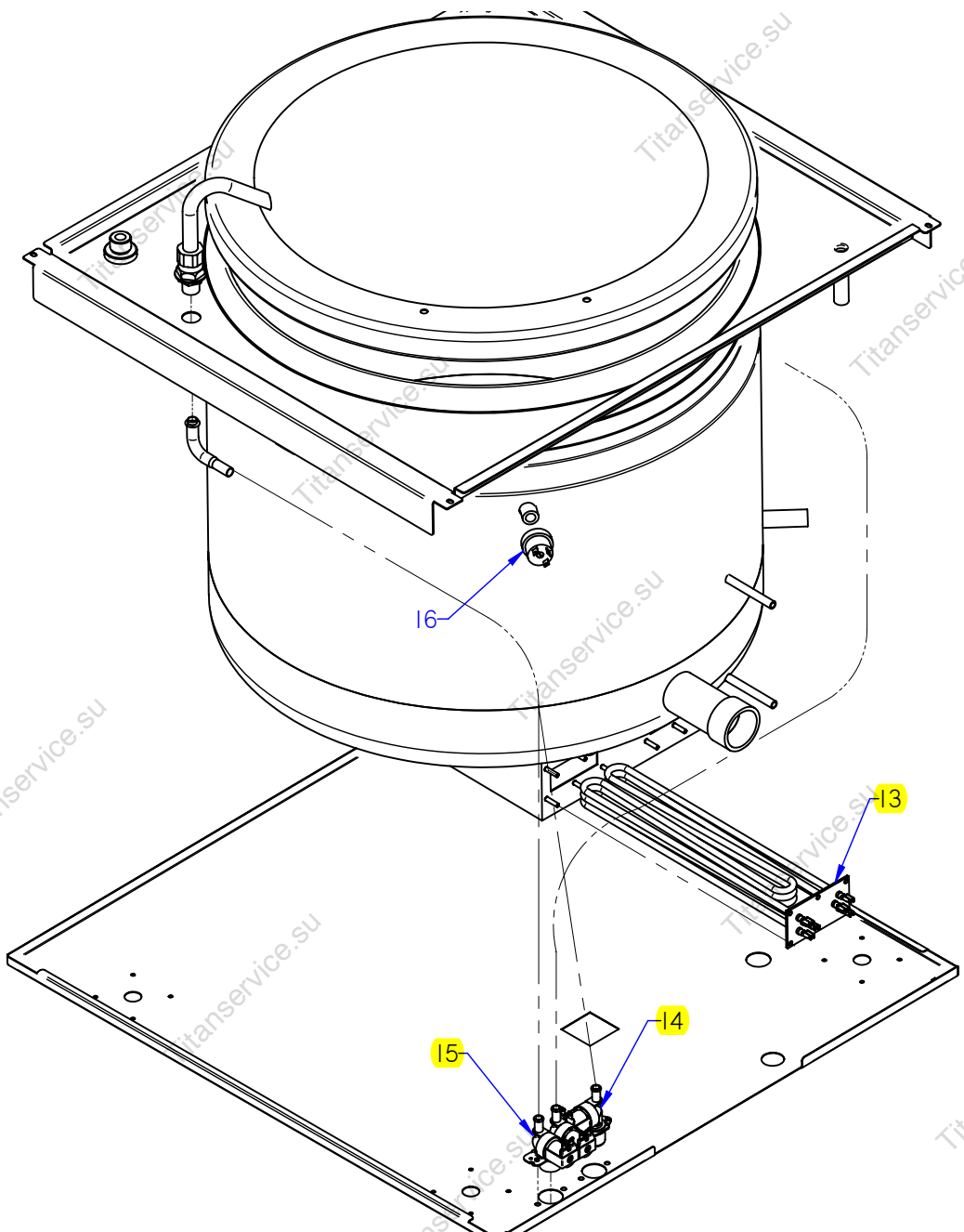


| MOD. | MARMITAS GAMA 900 / PAN 900 RANGE | | | ZONA | VALVULAS | | | | | PLANO | C-2266 | |
|------|-----------------------------------|---------------------------------|-----------------------------|-----------|-------------|-----------|-------------|---------------|--|-------|--------|----------------------|
| ITEM | CODIGO | DENOMINACION | TEXTO | ME9-10 BM | ME9-10 BM S | ME9-15 BM | ME9-15 BM S | ME9-15 BM 316 | | | | NOTAS |
| 1 | S022100000 | SOPORTE 3 SALIDAS 22805062 | 3-OUTPUT SUPPORT 22805062 | 1 | 1 | 1 | 1 | 1 | | | | |
| | Q306063000 | ARANDELA Ø34x26,7x1,5 | WASHER Ø34x26.7x1.5 | 1 | 1 | 1 | 1 | 1 | | | | |
| 2 | S022102000 | PORTAMANOMETRO 2210617 | MANOMETERHOLDER 2210617 | 1 | 1 | 1 | 1 | 1 | | | | |
| | Q306066000 | ARANDELA Ø23,9x16,6x3 | WASHER Ø23.9X16.6X3 | 1 | 1 | 1 | 1 | 1 | | | | |
| 3 | 9220815000 | MANOMETRO 36303601 | MANOMETER 36303601 | 1 | 1 | 1 | 1 | 1 | | | | |
| 4 | S022101000 | VALVULA SEGURIDAD 01508004 | SAFETY VALVE 01508004 | 1 | 1 | 1 | 1 | 1 | | | | |
| | Q306063000 | ARANDELA Ø34x26,7x1,5 | WASHER Ø34x26.7x1.5 | 1 | 1 | 1 | 1 | 1 | | | | |
| 5 | S022103000 | VALVULA PRESION 01509004 | PRESSURE VALVE 01509004 | 1 | 1 | 1 | 1 | 1 | | | | |
| | Q306064000 | ARANDELA Ø29,8x24,8x1,5 | WASHER Ø29.8x24.8x1.5 | 1 | 1 | 1 | 1 | 1 | | | | |
| 6 | S052100000 | TUBO LLENADO 01102113 | FILLER PIPE 01102113 | 1 | 1 | 1 | 1 | 1 | | | | |
| 7 | S166134000 | CUBA COMPLETA ME9-10 BM | COMPLETE TUB ME9-10 BM | 1 | 1 | — | — | — | | | | ELIMINADO 03,01,11 |
| 7 | S166144000 | CUBA COMPLETA ME9-10 BM | COMPLETE TUB ME9-10 BM | 1 | 1 | — | — | — | | | | INTRODUCIDO 03,01,11 |
| 7 | S236122000 | CUBA COMPLETA ME9-15 BM | COMPLETE TUB ME9-15 BM | — | — | 1 | 1 | — | | | | ELIMINADO 03,01,11 |
| 7 | S236130000 | CUBA COMPLETA ME9-15 BM | COMPLETE TUB ME9-15 BM | — | — | 1 | 1 | — | | | | INTRODUCIDO 03,01,11 |
| 7 | S236127000 | CUBA COMPLETA ME9-15 BM 316 | COMPLETE TUB ME9-15 BM 316 | — | — | — | — | 1 | | | | ELIMINADO 03,01,11 |
| 7 | S236135000 | CUBA COMPLETA ME9-15 BM 316 | COMPLETE TUB ME9-15 BM 316 | — | — | — | — | 1 | | | | INTRODUCIDO 03,01,11 |
| 8 | 12044568 | VALVULA ANTIRRETORNO 1/2" | NON-RETURN VALVE 1/2" | 1 | 1 | 1 | 1 | 1 | | | | INTRODUCIDO 02,04,12 |
| 9 | 12044569 | BOQUILLA MANGUERA 1/2" Ø11 | NOZZLE HOSE 1/2" Ø11 | 2 | 2 | 2 | 2 | 2 | | | | INTRODUCIDO 02,04,12 |
| | 12010047 | ABRAZADERA Fe Zn 8-14MM DIN3017 | CLAMP Fe Zn 8-14MM DIN3017 | 2 | 2 | 2 | 2 | 2 | | | | INTRODUCIDO 02,04,12 |
| 10 | S025006000 | CONDUC. PURGA COMPL. INF. | LOWER COMPL. BLEED PIPE | 2 | 2 | 2 | 2 | 2 | | | | |
| 10 | S025006000 | CONDUC. PURGA COMPL. INF. | LOWER COMPL. BLEED PIPE | 1 | 1 | 2 | 2 | 2 | | | | ELIMINADO 01.02.09 |
| 10 | S045004000 | CONDUCTO A NIVEL COMPLETO | COMPLETE LEVEL PIPE | — | — | 2 | 2 | 2 | | | | INTRODUCIDO 01.02.09 |
| 10 | S045004000 | CONDUCTO A NIVEL COMPLETO | COMPLETE LEVEL PIPE | — | — | 1 | 1 | 1 | | | | ELIMINADO 31,01,11 |
| 11 | S045006000 | CASQUILLO GRIFO NIVEL | LEVEL TAP BUSHING | 1 | 1 | 1 | 1 | 1 | | | | |
| 12 | S102124000 | GRIFO DE NIVEL C/MANILLA NEG | LEVEL TAP WITH BLACK HANDLE | 1 | 1 | 1 | 1 | 1 | | | | |
| 13 | S042102000 | TUBO NIVEL SERIGRAFIADO | PRINTED LEVEL PIPE | 1 | 1 | 1 | 1 | 1 | | | | |
| S/Nº | S082101000 | TUERCA 3/8 | NUT 3/8 | 2 | 2 | 2 | 2 | 2 | | | | |
| S/Nº | U265008000 | BICONO Ø10 | BICONE Ø10 | 2 | 2 | 2 | 2 | 2 | | | | |
| 14 | S042101000 | RACORD VISOR NIVEL | LEVEL SIGHT CONNECTION | 2 | 2 | 2 | 2 | 2 | | | | |
| | Q307069000 | JUNTA TORICA 17.26X12.36X2.5 | O-RING 17.26X12.36X2.5 | 2 | 2 | 2 | 2 | 2 | | | | |
| 15 | S042647000 | PROTECCION VISUALIZADOR | DISPLAY PROTECTION | 1 | 1 | 1 | 1 | 1 | | | | |

[illegible]

| | | | | | | |
|---------|--|---------|------------------------------|--------------------|--------|--|
| N plano | Firma | Fecha | Aparato | CONJUNTO FUNCIONAL | Lamina | Fagor Industrial S. Coop. FAGOR |
| C-2267 |  | 2009-03 | MARMITA ME9-10 BM; ME9-15 BM | | 3 | Onote |

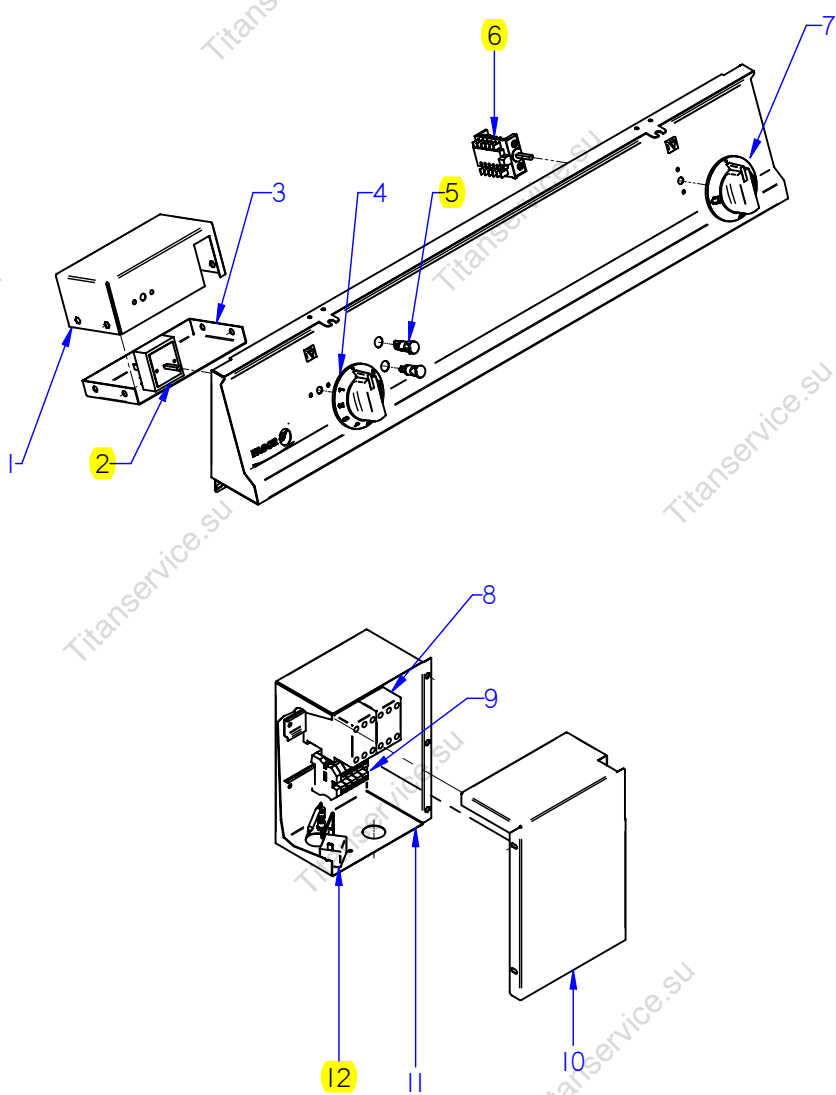
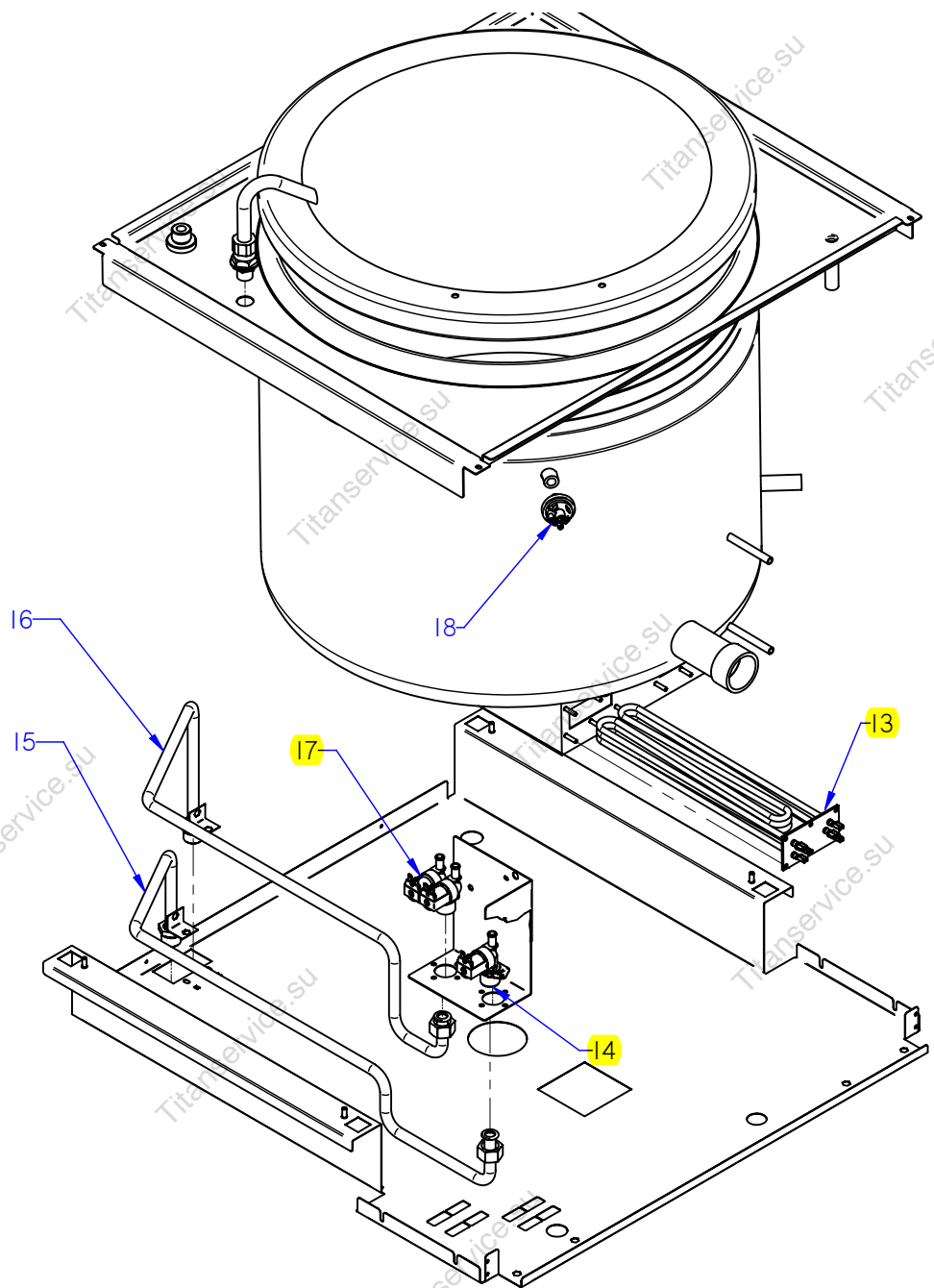
ITEM MARCADO EN COLOR = REPUESTO RECOMENDADO
COLOURED ITEM = RECOMMENDED SPARE PART



| <div>MOD. MARMITAS GAMA 900 / PAN 900 RANGE</div> <div>ZONA CONJUNTO FUNCIONAL / FUNCTIONAL UNIT</div> <div>PLANO C-2267</div> | | | | | | | | | | | | |
|--|------------|-------------------------------|------------------------------|-----------|-----------|---------------|--|--|--|--|--|----------------------|
| ITEM | CODIGO | DENOMINACION | TEXTO | ME9-10 BM | ME9-15 BM | ME9-15 BM 316 | | | | | | NOTAS |
| 1 | S162612000 | CAJA PROTEC REGUL ENERGIA | ENERGY CTRL PROTEC BOX | 1 | 1 | 1 | | | | | | |
| | Q221342000 | REMACHE EXAGONAL M5 | HEXAGONAL RIVET M5 | 4 | 4 | 4 | | | | | | |
| 2 | S333001000 | REGULADOR DE ENERGIA | ENERGY REGULATOR | 1 | 1 | 1 | | | | | | |
| | Q151320000 | TORN. ALOMADO M4X6 H.ZINCADO | HEXAGONAL CURVED HEAD M4X6 | 2 | 2 | 2 | | | | | | |
| 3 | S162613000 | TAPA INF. CAJA PROTECC. REG | CTRL. PROTECT. BOX LOWER CO | 1 | 1 | 1 | | | | | | |
| | Q152004000 | TORNILLO APLAST. M5x13 A304 | MUSHROOM HEAD BOLT M5x13 A | 4 | 4 | 4 | | | | | | |
| 4 | S162102000 | BOTON DE MANDO MARMITA ME9- | PAN CONTROL BUTTON ME9- | 1 | 1 | 1 | | | | | | |
| 5 | R693056000 | PILOTO AMBAR 41227000A4 | AMBER PILOT 41227000A4 | 1 | 1 | 1 | | | | | | ELIMINADO 01.02.13 |
| S/Nº | 12024669 | PILOTO AMBAR Ø18 | AMBER PILOT Ø18 | 1 | 1 | 1 | | | | | | INTRODUCIDO 01.02.13 |
| 5 | R693055000 | PILOTO VERDE 41227000C7 | GREEN PILOT 41227000C7 | 1 | 1 | 1 | | | | | | ELIMINADO 01.02.13 |
| S/Nº | 12047390 | PILOTO VERDE 230V AC 8KW 16MM | GREEN PILOT 230V AC 8KW 16MM | 1 | 1 | 1 | | | | | | INTRODUCIDO 01.02.13 |
| 6 | R693004000 | CONMUTADOR DE FUNCIONES | FUNCTIONS SWITCH | 1 | 1 | 1 | | | | | | |
| | Q042022000 | TORNILLO AVELLANADO M4X15 | COUNTERSUNK BOLT M4x15 | 2 | 2 | 2 | | | | | | |
| 7 | S142107000 | MANDO AGUA MARMITA BM | WATER PAN CONTROL BM | 1 | 1 | 1 | | | | | | |
| 8 | X183011000 | CONTACTOR 3RT1024-1AN20 230 | CONTACTOR 3RT1024-1AN20 230 | 2 | 2 | 2 | | | | | | |
| S/Nº | Z103084000 | GUIA CONTACTOR L-138 " | CONTACTOR GUIDE L-138 " | 1 | 1 | 1 | | | | | | |
| | Q419005000 | REMACHE 4X8 ALMG3 / ALUMINIO | RIVET 4X8 ALMG3 / ALUMINIUM | 2 | 2 | 2 | | | | | | |
| 9 | Z683069000 | BORNES 16 | TERMINALS 16 | 3 | 3 | 3 | | | | | | |
| | Z683097000 | BORNA PASO WDU16 10204.8 | STEP TERMINAL WDU16 10204.8 | 1 | 1 | 1 | | | | | | |
| | Z683070000 | BORNA A TIERRA WEIDMULLER | TERMINAL TO EARTH WEIDMULLER | 1 | 1 | 1 | | | | | | |
| | Z683096000 | TOPE FINAL WEW35 10590.0 | END STOP WEW35 10590.0 | 1 | 1 | 1 | | | | | | |
| | Z683068000 | SEÑALIZ.DEK-6WEIDMULLER | SIGNS DEK-6WEIDMULLER | 1 | 1 | 1 | | | | | | |
| S/Nº | Z103084000 | GUIA CONTACTOR L-138 " | CONTACTOR GUIDE L-138 " | 1 | 1 | 1 | | | | | | |
| | Q419005000 | REMACHE 4X8 ALMG3 / ALUMINIO | RIVET 4X8 ALMG3 / ALUMINIUM | 2 | 2 | 2 | | | | | | |
| 10 | S093014000 | TAPA CAJA ELECTRICA G9-00 | ELECTRIC BOX COVER G9-00 | 1 | 1 | 1 | | | | | | |
| 11 | S092606000 | CAJA ELECTRICA | ELECTRIC BOX | 1 | 1 | 1 | | | | | | |
| | Q221342000 | REMACHE EXAGONAL M5 | HEXAGONAL RIVET M5 | 3 | 3 | 3 | | | | | | |
| | Q152004000 | TORNIL. APLASTADO M5X13 A 304 | FLAT HEADED SCREW M5x13 A 3 | 5 | 5 | 5 | | | | | | |
| 12 | Z213014000 | LIMITADOR TECASA P. | LIMITER TECASA P. | 1 | 1 | 1 | | | | | | |
| | Q151320000 | TORN. ALOMADO M4X6 H.ZINCADO | HEXAGONAL CURVED HEAD M4X6 | 2 | 2 | 2 | | | | | | |
| | | | | | | | | | | | | |

| | | | | | | |
|---------|--|---------|-------------------------------|--------------------|--------|---------------------------|
| N plano | Firma | Fecha | Aparato | CONJUNTO FUNCIONAL | Lamina | Fagor Industrial S. Coop. |
| C-2267a |  | 2009-03 | MARMITA ME9-10 BM S / 15 BM S | | 4 | Onate |

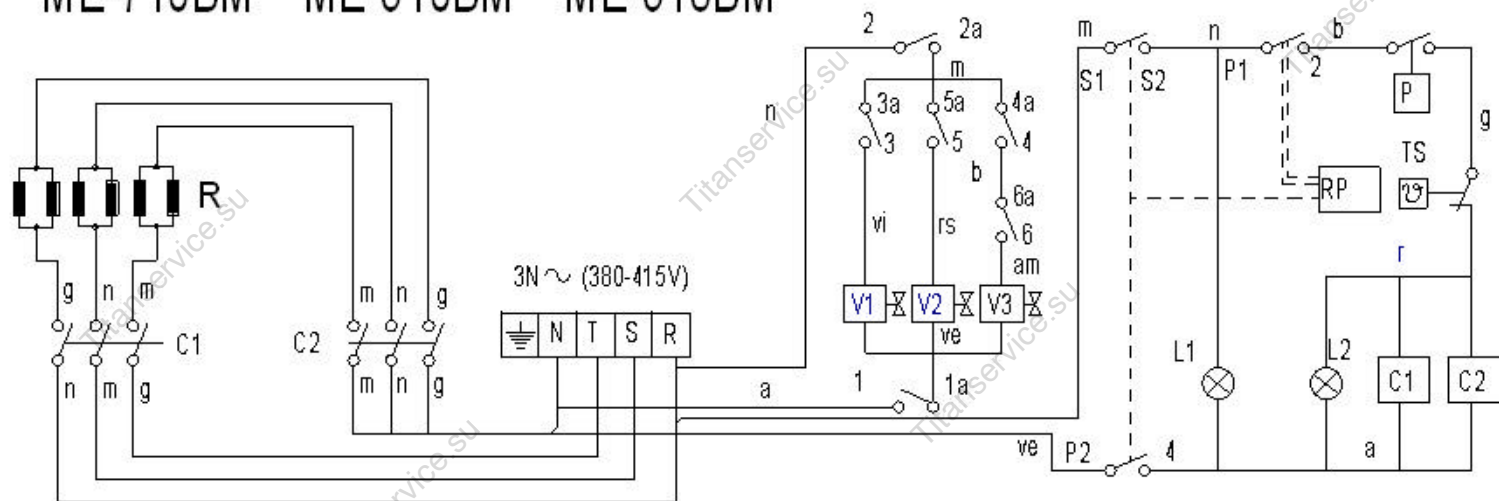
ITEM MARCADO EN COLOR = REPUESTO RECOMENDADO
COLOURED ITEM = RECOMMENDED SPARE PART



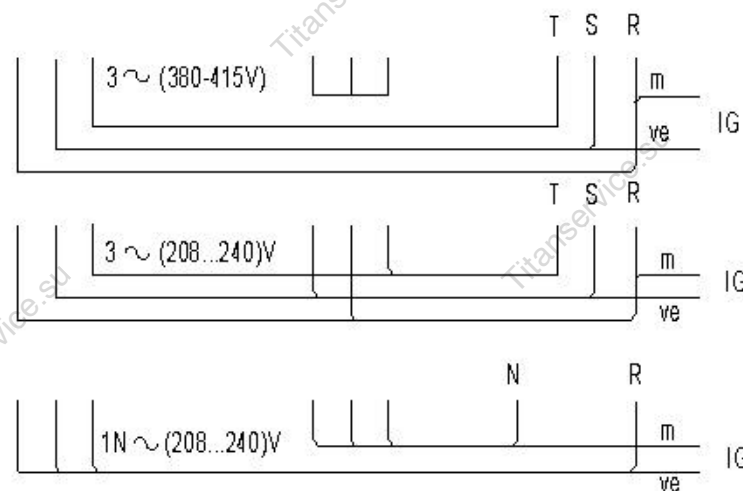
| MOD. MARMITAS GAMA 900 / PAN 900 RANGE ZONA CONJUNTO FUNCIONAL / FUNCTIONAL UNIT PLANO C-2267a | | | | | | | | | | | | |
|--|------------|-------------------------------|------------------------------|-------------|-------------|--|--|--|--|--|--|----------------------|
| ITEM | CODIGO | DENOMINACION | TEXTO | ME9-10 BM S | ME9-15 BM S | | | | | | | NOTAS |
| 1 | S162612000 | CAJA PROTEC REGUL ENERGIA | ENERGY CTRL PROTEC BOX | 1 | 1 | | | | | | | |
| | Q221342000 | REMACHE EXAGONAL M5 | HEXAGONAL RIVET M5 | 4 | 4 | | | | | | | |
| 2 | S333001000 | REGULADOR DE ENERGIA | ENERGY REGULATOR | 1 | 1 | | | | | | | |
| | Q151320000 | TORN. ALOMADO M4X6 H.ZINCADO | HEXAGONAL CURVED HEAD M4X6 | 2 | 2 | | | | | | | |
| 3 | S162613000 | TAPA INF. CAJA PROTECC. REG | CTRL. PROTECT. BOX LOWER CO | 1 | 1 | | | | | | | |
| | Q152004000 | TORNILLO APLAST. M5x13 A304 | MUSHROOM HEAD BOLT M5x13 A | 4 | 4 | | | | | | | |
| 4 | S162102000 | BOTON DE MANDO MARMITA ME9- | PAN CONTROL BUTTON ME9- | 1 | 1 | | | | | | | |
| 5 | R693056000 | PILOTO AMBAR 41227000A4 | AMBER PILOT 41227000A4 | 1 | 1 | | | | | | | ELIMINADO 01.02.13 |
| S/Nº | 12024669 | PILOTO AMBAR Ø18 | AMBER PILOT Ø18 | 1 | 1 | | | | | | | INTRODUCIDO 01.02.13 |
| 5 | R693055000 | PILOTO VERDE 41227000C7 | GREEN PILOT 41227000C7 | 1 | 1 | | | | | | | ELIMINADO 01.02.13 |
| S/Nº | 12047390 | PILOTO VERDE 230V AC 8KW 16MM | GREEN PILOT 230V AC 8KW 16MM | 1 | 1 | | | | | | | INTRODUCIDO 01.02.13 |
| 6 | R693004000 | CONMUTADOR DE FUNCIONES | FUNCTIONS SWITCH | 1 | 1 | | | | | | | |
| | Q042022000 | TORNILLO AVELLANADO M4X15 | COUNTERSUNK BOLT M4x15 | 2 | 2 | | | | | | | |
| 7 | S142107000 | MANDO AGUA MARMITA BM | WATER PAN CONTROL BM | 1 | 1 | | | | | | | |
| 8 | X183011000 | CONTACTOR 3RT1024-1AN20 230 | CONTACTOR 3RT1024-1AN20 230 | 2 | 2 | | | | | | | |
| S/Nº | Z103084000 | GUIA CONTACTOR L-138 " | CONTACTOR GUIDE L-138 " | 1 | 1 | | | | | | | |
| | Q419005000 | REMACHE 4X8 ALMG3 / ALUMINIO | RIVET 4X8 ALMG3 / ALUMINIUM | 2 | 2 | | | | | | | |
| 9 | Z683069000 | BORNES 16 | TERMINALS 16 | 3 | 3 | | | | | | | |
| | Z683097000 | BORNA PASO WDU16 10204.8 | STEP TERMINAL WDU16 10204.8 | 1 | 1 | | | | | | | |
| | Z683070000 | BORNA A TIERRA WEIDMULLER | TERMINAL TO EARTH WEIDMULL | 1 | 1 | | | | | | | |
| | Z683096000 | TOPE FINAL WEW35 10590.0 | END STOP WEW35 10590.0 | 1 | 1 | | | | | | | |
| | Z683068000 | SEÑALIZ.DEK-6WEIDMULLER | SIGNS DEK-6WEIDMULLER | 1 | 1 | | | | | | | |
| S/Nº | Z103084000 | GUIA CONTACTOR L-138 " | CONTACTOR GUIDE L-138 " | 1 | 1 | | | | | | | |
| | Q419005000 | REMACHE 4X8 ALMG3 / ALUMINIO | RIVET 4X8 ALMG3 / ALUMINIUM | 2 | 2 | | | | | | | |
| 10 | S093014000 | TAPA CAJA ELECTRICA G9-00 | ELECTRIC BOX COVER G9-00 | 1 | 1 | | | | | | | |
| 11 | S092606000 | CAJA ELECTRICA | ELECTRIC BOX | 1 | 1 | | | | | | | |
| | Q221342000 | REMACHE EXAGONAL M5 | HEXAGONAL RIVET M5 | 3 | 3 | | | | | | | |
| | Q152004000 | TORNIL. APLASTADO M5X13 A 304 | FLAT HEADED SCREW M5x13 A 3 | 5 | 5 | | | | | | | |
| 12 | Z213014000 | LIMITADOR TECASA P. | LIMITER TECASA P. | 1 | 1 | | | | | | | |
| | Q151320000 | TORN. ALOMADO M4X6 H.ZINCADO | HEXAGONAL CURVED HEAD M4X6 | 2 | 2 | | | | | | | |
| | | | | | | | | | | | | |

| MOD. | MARMITAS GAMA 900 / PAN 900 RANGE | | | ZONA | REPUESTOS RECOMENDADOS RECOMMENDED SPARE PART | | | | | PLANO | |
|------|-----------------------------------|-------------------------------|------------------------------|-----------|--|-----------|-------------|---------------|--|-------|---------|
| ITEM | CODIGO | DENOMINACION | TEXTO | ME9-10 BM | ME9-10 BM S | ME9-15 BM | ME9-15 BM S | ME9-15 BM 316 | | | NOTAS |
| 5 | S116121000 | RESORTE TAPA 07199 | SPRING COVER 07199 | 1 | 1 | 1 | 1 | 1 | | | C-2265 |
| 3 | 9220815000 | MANOMETRO 36303601 | MANOMETER 36303601 | 1 | 1 | 1 | 1 | 1 | | | C-2266 |
| 4 | S022101000 | VALVULA SEGURIDAD 01508004 | SAFETY VALVE 01508004 | 1 | 1 | 1 | 1 | 1 | | | C-2266 |
| 5 | S022103000 | VALVULA PRESION 01509004 | PRESSURE VALVE 01509004 | 1 | 1 | 1 | 1 | 1 | | | C-2266 |
| 6 | S052100000 | TUBO LLENADO 01102113 | FILLER PIPE 01102113 | 1 | 1 | 1 | 1 | 1 | | | C-2266 |
| 8 | 12044568 | VALVULA ANTIRRETORNO 1/2" | NON-RETURN VALVE 1/2" | 1 | 1 | 1 | 1 | 1 | | | C-2266 |
| 12 | S102124000 | GRIFO DE NIVEL C/MANILLA NEG | LEVEL TAP WITH BLACK HANDLE | 1 | 1 | 1 | 1 | 1 | | | C-2266 |
| 13 | S042102000 | TUBO NIVEL SERIGRAFIADO | PRINTED LEVEL PIPE | 1 | 1 | 1 | 1 | 1 | | | C-2266 |
| S/Nº | S082101000 | TUERCA 3/8 | NUT 3/8 | 2 | 2 | 2 | 2 | 2 | | | C-2266 |
| S/Nº | U265008000 | BICONO Ø10 | BICONE Ø10 | 2 | 2 | 2 | 2 | 2 | | | C-2266 |
| 16 | S102125000 | GRIFO VACIADO 2" | DRAINAGE TAP 2" | 1 | 1 | 1 | 1 | 1 | | | C-2266 |
| 2 | S333001000 | REGULADOR DE ENERGIA | ENERGY REGULATOR | 1 | — | 1 | — | 1 | | | C-2267 |
| 5 | 12024669 | PILOTO AMBAR Ø18 | AMBER PILOT Ø18 | 1 | — | 1 | — | 1 | | | C-2267 |
| S/Nº | 12047390 | PILOTO VERDE 230V AC 8KW 16MM | GREEN PILOT 230V AC 8KW 16MM | 1 | — | 1 | — | 1 | | | C-2267 |
| 6 | R693004000 | CONMUTADOR DE FUNCIONES | FUNCTIONS SWITCH | 1 | — | 1 | — | 1 | | | C-2267 |
| 12 | Z213014000 | LIMITADOR TECASA P. | LIMITER TECASA P. | 1 | — | 1 | — | 1 | | | C-2267 |
| 13 | T323038000 | RESISTENCIA 3000WX3 230V | RESISTOR 3000WX3 230V | 2 | — | 2 | — | 2 | | | C-2267 |
| 14 | Z701135000 | ELECTROVALVULA SIMP. 220V | SIMPLE SOLENOID VALVE 220V | 1 | — | 1 | — | 1 | | | C-2267 |
| 15 | P255001000 | ELECTROVALVULA DOBLE | DOUBLE SOLENOID VALVE | 1 | — | 1 | — | 1 | | | C-2267 |
| 2 | S333001000 | REGULADOR DE ENERGIA | ENERGY REGULATOR | — | 1 | — | 1 | — | | | C-2267a |
| 5 | 12024669 | PILOTO AMBAR Ø18 | AMBER PILOT Ø18 | — | 1 | — | 1 | — | | | C-2267a |
| S/Nº | 12047390 | PILOTO VERDE 230V AC 8KW 16MM | GREEN PILOT 230V AC 8KW 16MM | — | 1 | — | 1 | — | | | C-2267a |
| 6 | R693004000 | CONMUTADOR DE FUNCIONES | FUNCTIONS SWITCH | — | 1 | — | 1 | — | | | C-2267a |
| 12 | Z213014000 | LIMITADOR TECASA P. | LIMITER TECASA P. | — | 1 | — | 1 | — | | | C-2267a |
| 13 | T323038000 | RESISTENCIA 3000WX3 230V | RESISTOR 3000WX3 230V | — | 2 | — | 2 | — | | | C-2267a |
| | Q163140000 | TUERCA EXAGONAL M6 LATON | HEXAGONAL NUT M6 BRASS | — | 12 | — | 12 | — | | | C-2267a |
| 14 | Z701135000 | ELECTROVALVULA SIMP. 220V | SIMPLE SOLENOID VALVE 220V | — | 1 | — | 1 | — | | | C-2267a |
| 17 | P255001000 | ELECTROVALVULA DOBLE | DOUBLE SOLENOID VALVE | — | 1 | — | 1 | — | | | C-2267a |
| | | | | | | | | | | | |
| | | | | | | | | | | | |
| | | | | | | | | | | | |

ME-710BM ME-910BM ME-915BM



IG: Interruptor general
 C1,C2: Contactor de calentamiento
 L1: Lámp para funcionamiento
 L2: Lámp para calentamiento
 P: Presostato 0,3 bares
 R: Resistencias
 RP: Regulador de energía.
 TS: Termostato Seguridad (125°)
 V1: Válvula Agua Caliente
 V2: Válvula Agua Fria
 V3: Válvula Agua Cámara



| POSICION | % ±2% | P1 TON | 2 TON+TOF | P2 - 4 | S1 - S2 |
|----------|-------|-----------|--------------|--------|---------|
| 0 | 0 | 0 | ∞ | | |
| 52° | 6% | 3" | 45" | X | X |
| 84° | 10% | 4" | 38" | X | X |
| 116° | 15% | 5" | 32" | X | X |
| 148° | 25% | 7" | 29" | X | X |
| 180° | 30% | 9" | 30" | X | X |
| 212° | 40% | 13" | 32" | X | X |
| 244° | 55% | 21" | 37" | X | X |
| 276° | 75% | 45" | 60" | X | X |
| 308° | 100% | ∞ | ∞ | X | X |

ve = verde-green-vert
 r = rojo-red-rouge
 m = marron-brown-marron
 g = gris-grey-gris
 n = negro-black-noir
 a = azul-blue-bleu
 b = blanco-white-blanc
 vi = violeta-violette-violet
 am/ve = amarillo/verde
 yellow/green-june Ave n

S333003000

| | | | |
|------------------------------------|---|--|------------------|
| Esquema teórico ME-710BM, ME-910BM | | S333003000 | |
| Nº | Pieza | Materia | Nº Clasificación |
| Nº | Modificación | Propuesta de | Fecha |
| 1 | Introducir Tabla del Regulador de Energía | M. Malló | 09-05-2003 |
| | | To Errores generales | |
| | | <5% : 50-100% : 5-25% : > 100% : 25-50% : X% | |
| | | Firmas: Dibuja: J. GONZALEZ 31-05-1997 Proyecto: M. Malló 31-05-1997 Comprobado: 31-05-1997 Escala: | |
| | | Fagor Industrial Coop. Etk. Migatua MECANIZADO a pte rtrial Pto de montaje: HC-72844 -1 Sustituye al Nº: Sustituido por: | |
| | | MARMITA ELECTRICA Pto de montaje: HC-72844 -1 | |

| Simb/LENG | | ESPAÑOL | ENGLISH | FRANÇAIS | DEUTSCH | ITALIANO |
|-----------|---|-------------------------------------|------------------------------|---------------------------------------|--|---|
| C1, C2 | = | Contactador Calentamiento | Contacteur Chauffe | Heating Contactor | Heizschütz | Contatore Riscaldamento |
| CN | = | Control de Nivel de agua | Control of water Level | Commande de niveau d'eau | Steuerung des Wasserspiegels | Controllo del livello d'acqua |
| E | = | Generador de Chispa | Spark generator | Générateur d'étincelle | Funkengenerator | Generatore della scintilla |
| IB | = | Micro tope bajada | Microswitch of lowered Limit | Microcontact de la limite abaissée | Mikroschalter der gesenkten Begrenzung | Microinterruttore del limite abbassato |
| IG | = | Interruptor general | General switch | Commutateur général | Allgemeiner Schalter | Interruttore generale |
| IGV | = | Interruptor electrovalvulas de agua | Switch electrovalvula water | Commutez l'eau d'electrovalvula | Schalten Sie electrovalvula Wasser | Commuti l'acqua di electrovalvula |
| IE | = | Pulsador de Encendido | Ignition Switch | Commutateur d'allumage | Zündung-Schalter | Interruttore di accensione |
| IMB | = | Pulsador bajada | lowered switch | commutateur abaissé | gesenkter Schalter | interruttore abbassato |
| IMS | = | Pulsador subida | Raised switch | Commutateur augmenté | Angehobener Schalter | Interruttore sollevato |
| IP | = | Micro seguridad | security microswitch | microcontact de sécurité | Sicherheitsmikroschalter | microinterruttore di sicurezza |
| IS | = | Micro tope subida | Microswitch of rise Limit | Microcontact de la limite d'élévation | Mikroschalter der Aufstieg Begrenzung | Microinterruttore del limite di aumento |
| L1 | = | Lámpara marcha | Operation Light | Lumière d'opération | Betriebs-Licht | Luce di funzionamento |
| L2 | = | Lámpara calentamiento | Heating Light | Lumière de chauffage | Heizungs-Licht | Luce del riscaldamento |
| M | = | Motor de elevacion | Motor of elevation | Moteur d'altitude | Motor des Aufzugs | Motore dell'altezza |
| P | = | Presostato de Camara | Water Level Switch | Commutateur de niveau d'eau | Wasserspiegel-Schalter | Interruttore del livello d'acqua |
| PR | = | Puente rectificador | Electrical bridge rectifier | Pont redresseur électrique | Elektrischer Brückengleichrichter | Raddrizzatore a ponte elettrico |
| R | = | Resistencia Calentamiento. | Résistance Chauffe | Heating Resistors | Widerstand Aufheizung | Resistenza Riscaldamento |
| RE | = | Regulador Energia | Regulator of Energy | Régulateur d'énergie | Regler von Energie | Regolatore di energia |
| T | = | Termostato | Thermostat | Thermostat | Thermostat | Termostato |
| TRF | = | Transformador | Transformer | Transformateur | Transformator | Trasformatore |
| TS | = | Termostato de seguridad | Security Thermostat | Thermostat de sécurité | Sicherheits-Thermostat | Termostato di sicurezza |
| TRP | = | Termopar | Thermocouple | Thermocouple | Thermoelement | Termocoppia |
| VG1,VG2 | = | ElectroVálvula gas | Electrical gas valve | Clapet à gaz électrique | Elektrisches Gichtventil | Valvola a gas elettrica |
| V1 | = | Valvula Agua CALIENTE | ElectroValve of Hot Water | Électrovalve d'eau chaude | Elektroventil des Heißwassers | Elettrovalvola di acqua calda |
| V2 | = | Valvula Agua FRIA | ElectroValve of cold Water | Électrovalve d'eau froide | Elektroventil des kalten Wassers | Elettrovalvola di acqua fredda |
| V3 | = | Valvula Agua Caldera | electrovalve of water boiler | électrovalve de chauffe-eau | Elektroventil des Warmwasserboilers | elettrovalvola del reattore ad acqua |
| | | | | | | |
| | = | COLORES | COLOUR | COULEURS | FARBEN | COLORE |
| a | = | Azul | Blue | Bleu | Blau | Blu |
| am | = | Amarillo | Yellow | Jaune | Gelb | Giallo |
| am/ve | = | Amarillo/verde | Yellow / green | Jaune / vert | Gelb/grün | Giallo/verde |
| b | = | Blanco | White | Blanc | Weiß | Bianco |
| g | = | Gris | Grey | Gris | Grau | Grigio |
| m | = | Marrón | Brown | Marron | Braun | Marrone |
| n | = | Negro | Black | Noir | Schwarz | Nero |
| na | = | Naranja | Orange | Orange | Orange | Arancio |
| r | = | Rojo | Red | Rouge | Rot | Rosso |
| rs | = | Rosa | Pink | Rose | Rosa | Roseo |
| ve | = | Verde | Green | Vert | Grün | Verde |
| vi | = | Violeta | Purple | Violet | Violett | Viola |
| | | | | | | |
| | | | | | | X463007000 |