
DESPIECE TECNICO

Marmita eléctrica baño maría
Electric indirect boiling pans
Marmites électriques système bain-marie
Elektro-kochkessel indirekt beheizt
Pentole riscaldamento elettrico indiretto
Marmita eléctrica de banho-maria

GAMA 900

Modelos:

ME9-10 PLUS BM

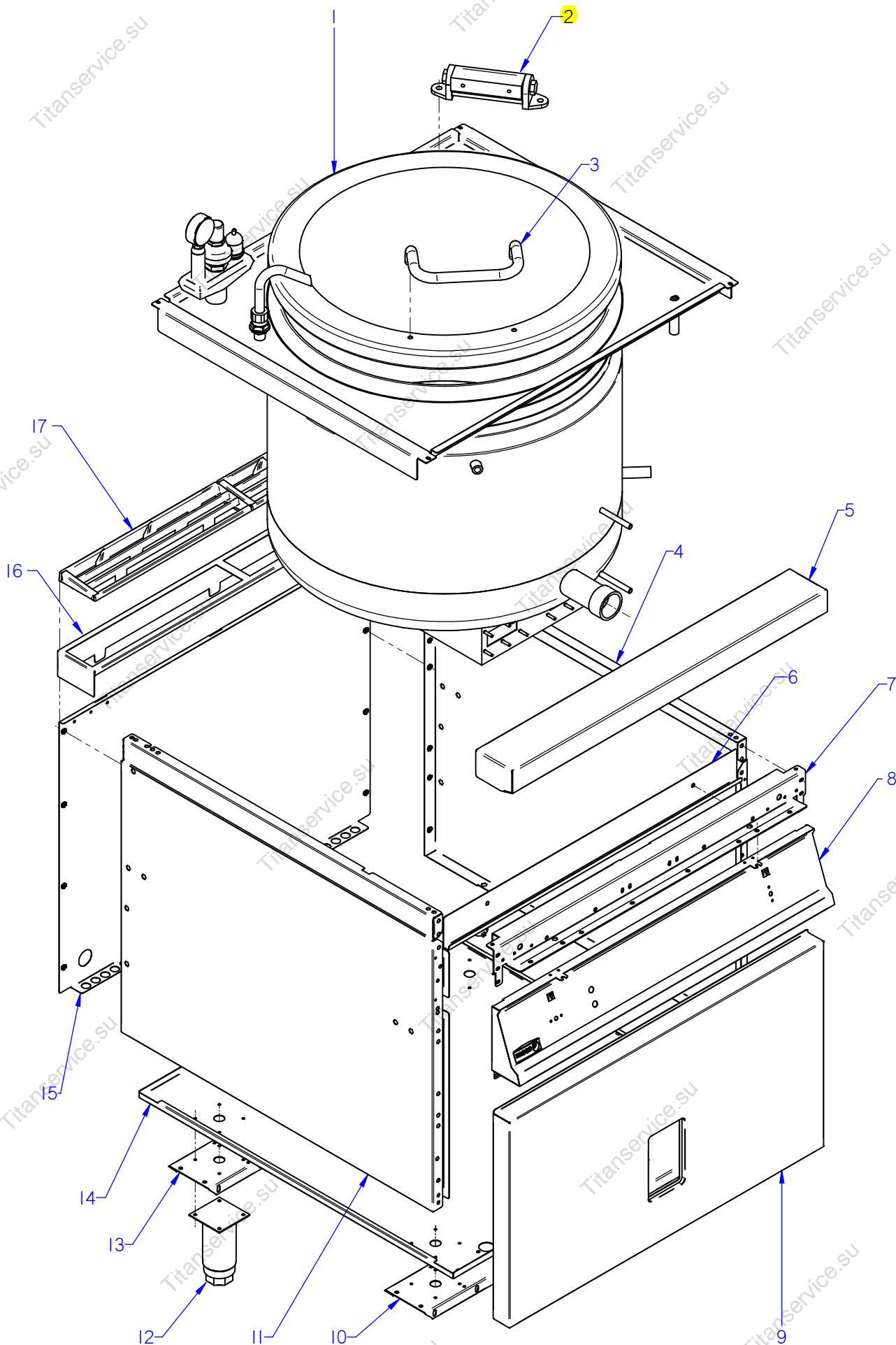
ME9-15 PLUS BM

Octubre 2011 October

Revisado Junio 2013 June Revised



F A G O R I N D U S T R I A L



ITEM MARCADO EN COLOR = REPUESTO RECOMENDADO
COLOURED ITEM = RECOMMENDED SPARE PART

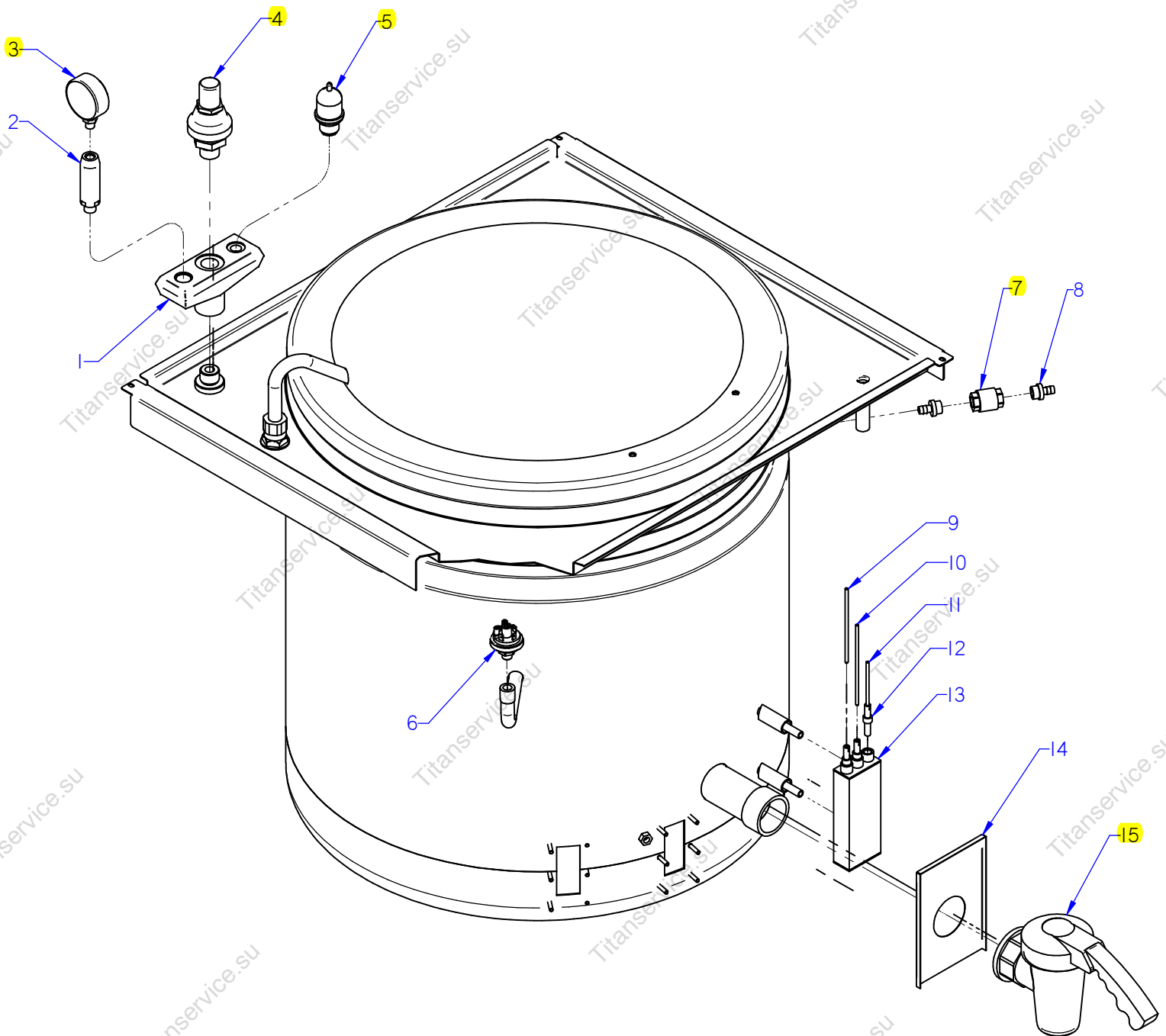
Nº plano / N° plane	Firma	Fecha / Date	Denominación / Denomination:	MUEBLE / FITTING	Lamina / Sheet	Fagor Industrial S.Coop. FAGOR
C-2912	<i>[Signature]</i>	2011-10	MARMITAS ME9-10 / 9-15 PLUS BM	1	Oñate	

MOD.	MARMITAS / BOILING PANS			ZONA / ZONE		MUEBLE / FITTING								PLANO DIAGRAM		C-2912
ITEM	CODIGO REFERENCE	DENOMINACION	DENOMINATION	ME9-10 PLUS BM	ME9-10 PLUS BM S	ME9-15 PLUS BM	ME9-15 PLUS BM S							ELIMINADO ELIMINATED	INTRODUCID. INTRODUCED	NOTAS
1	12043626	CUBA+TAPA ME9-10BM AD	TUB+COVER ME9-10 BM AD	1	1											
1	12010473	CUBA+TAPA ME9-15 BM AD	TUB+COVER ME9-15 BM AD			1	1									
S/Nº	12043625	CUBA COMPLETA ME9-10BM AD	COMPLETE TUB ME9-10BM AD	1	1											
S/Nº	12044499	CUBA COMPLETA ME9-15 BM AD	COMPLETE TUB ME9-15 BM AD			1	1									
S/Nº	12010758	TAPA COMPLETA	COMPLETE COVER	1	1	1	1									
S/Nº	S016101000	FILTRO DE CUBA	TUB FILTER	1	1	1	1									
	S036117000	SOPORTE FILTRO	FILTER SUPPORT	2	2	2	2									
	Q412000000	REMACHE TUBULAR 4x8	TUBULAR RIVET 4x8	8	8	8	8									
2	X026123000	BISAGRA ADVANCE	HINGE ADVANCE	1	1	1	1									
	Q012041000	TORNILLO EXAGONAL M6x10 A304	HEXAGONAL BOLT M6x10 A304	2	2	2	2									
3	S266124000	ASA DE TAPA AD	COVER HANDLE AD	1	1	1	1									
	S262678000	CASQUILLO AMARRE TAPA	BUSHING COVER CAP	2	2	2	2									
	Q012021000	TORNILLO EXAGONAL M4X10	HEXAGONAL BOLT M4X10	2	2	2	2									
4	X162814000	PANEL LATERAL DERECHO G900	RIGHT SIDE PANEL G900	1		1										
4	12003768	PANEL LATERAL DERECH. G9-00S	RIGHT SIDE PANEL G9-00S		1											
4	12003773	PANEL LATERAL DERE. MG9-15S	RIGHT SIDE PANEL MG9-15S				1									
	Q221343000	REMACHE EXAGONAL M6	HEXAGONAL RIVET M6	11	11	11	11									
	Q221342000	REMACHE EXAGONAL M5	HEXAGONAL RIVET M5	6	6	6	6									
	Q012053000	TORNILLO EXAGONAL M8x20 A304	HEXAGONAL BOLT M8x20 A304	2	2	2	2									
5	S105403000	ANTERIOR DE MESA 1M	BENCH FRONT 1M	1		1										
	Q152004000	TORNILLO APLAST. M5x13 A304	MUSHROOM HEAD BOLT M5x13 A	2		2										
	Q302022000	ARANDELA 16x6x1,2 A304	WASHER 16x6x1.2 A304	2		2										
7	S262607000	ESCUADRA INTERIOR MESA 1M	INTERIOR SQUARE TABLE 1M	1	1	1	1									
	Q221342000	REMACHE EXAGONAL M5	HEXAGONAL RIVET M5	2	2	2	2									
	Q152004000	TORNILLO APLAST. M5x13 A304	MUSHROOM HEAD BOLT M5x13 A	2	2	2	2									
8	S162807000	PORTAMANDOS MARMITA ELECT.	ELECT. PAN CONTROL HOLDER	1	1	1	1									
	Q152004000	TORNILLO APLAST. M5x13 A304	MUSHROOM HEAD BOLT M5x13 A	4	4	4	4									
	Q151336000	TORNILLO SOPORTE GUIAS	GUIDE SUPPORT BOLT	2	2	2	2									
	Q302022000	ARANDELA 16x6x1,2 A304	WASHER 16x6x1.2 A304	2	2	2	2									
	U022836000	ESCUDO FAGOR	FAGOR EMBLEM	1	1	1	1									
	Q221023000	CLIP SUJECCIÓN RÁPIDA Ø 5	RAPID FASTENING CLIP Ø5	2	2	2	2									

MOD.	MARMITAS / BOILING PANS		ZONA / ZONE	MUEBLE / FITTING								PLANO DIAGRAM		C-2912
ITEM	CODIGO REFERENCE	DENOMINACION	DENOMINATION	ME9-10 PLUS BM	ME9-10 PLUS BM S	ME9-15 PLUS BM	ME9-15 PLUS BM S					ELIMINADO ELIMINATED	INTRODUCID. INTRODUCED	NOTAS
9	12002195	PANEL FRONTAL ME9-10 BM AD	FRONT PANEL ME9-10 BM AD	1										
9	12006559	PANEL FRONTAL ME9-10 BM S AD	FRONT PANEL ME9-10 BM S AD		1									
9	12002194	PANEL FRONTAL ME9-15 BM AD	FRONT PANEL ME9-15 BM AD			1	1							
	Q012042000	TORNILLO EXAGONAL M6x15	HEXAGONAL BOLT M6x15	2	2	2	2							
	Q302022000	ARANDELA 16x6x1,2 A304	WASHER 16x6x1.2 A304	2	2	2	2							
10	12005781	LISTON SOPORTE PATAS ANT.1M	FRONT LEG SUPPORT STRIP 1M	1		1								
11	X162813000	PANEL LATERAL IZQUIERDO G900	LEFT SIDE PANEL G900	1		1								
11	12003767	PANEL LATERAL IZQUIER. G900S	LEFT SIDE PANEL G900S		1									
11	12003772	PANEL LATERAL IZQUI. MG9-15S	LEFT SIDE PANEL MG9-15S				1							
	Q221343000	REMACHE EXAGONAL M6	HEXAGONAL RIVET M6	11	11	11	11							
	Q221342000	REMACHE EXAGONAL M5	HEXAGONAL RIVET M5	6	6	6	6							
	Q012053000	TORNILLO EXAGONAL M8x20 A304	HEXAGONAL BOLT M8x20 A304	2	2	2	2							
12	X260151000	PATA REGULABLE	ADJUSTABLE LEG	4		4								
	Q411304000	REMACHE AVIBULB Ø4,8	AVIBULB RIVET Ø4.8	16		16								
13	12005782	LISTON SOPORTE PATAS POS.1M	REAR LEG SUPPORT STRIP 1M	1		1								
	Q012042000	TORNILLO EXAGONAL M6x15	HEXAGONAL BOLT M6x15	8		8								
	Q302022000	ARANDELA 16x6x1,2 A304	WASHER 16x6x1.2 A304	8		8								
	Q232040000	ARANDELA A6	WASHER A6	8		8								
14	12006994	BASE INFERIOR ME900 AD	LOWER BASE ME900 AD	1		1								
14	12043661	BASE INFERIOR ME9-10PLUS BM S	LOWER BASE ME9-10PLUS BM S		1									
14	12043546	BASE INFERIOR ME9-15PLUS BM S	LOWER BASE ME9-15PLUS BM S				1							
	Q221343000	REMACHE EXAGONAL M6	HEXAGONAL RIVET M6	2	2	2	2							
	Q162040000	TUERCA EXAGONAL M6	HEXAGONAL NUT M6	4	4	4	4							
15	X022841000	PANEL POSTERIOR 1M G9-00 AD	REAR PANEL 1M G9-00 AD	1		1								
15	12006588	PANEL POSTERIOR 910-S AD	REAR PANEL 910-S AD		1									
15	12006843	PANEL POSTERIOR MG9-15 S	REAR PANEL MG9-15 S				1							
	Q419005000	REMACHE 4x8 ALMG3 / ALUMINIO	RIVET 4X8 ALMG3 / ALUMINIUM	8	8	8	8							
16	R205439000	SOPORTE EMBELLECEDOR 1M	TRIM SUPPORT 1M	1	1	1	1							
17	R205425000	EMBELLECEDOR ESMALTE	ENAMEL TRIM	2	2	2	2							

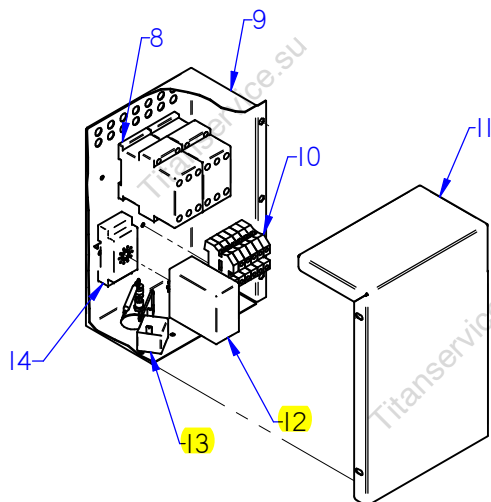
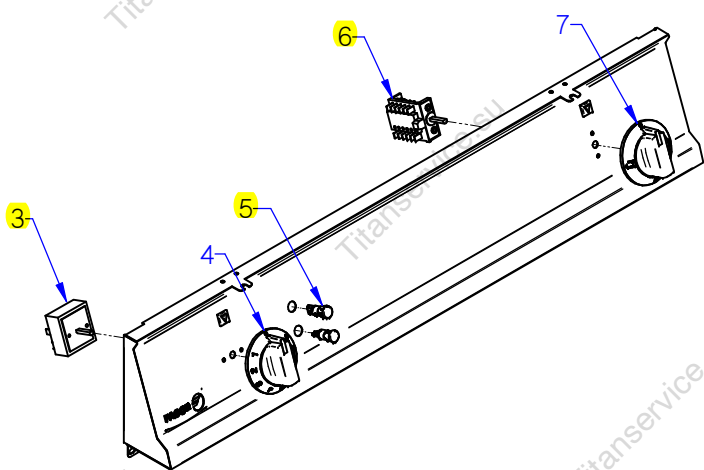
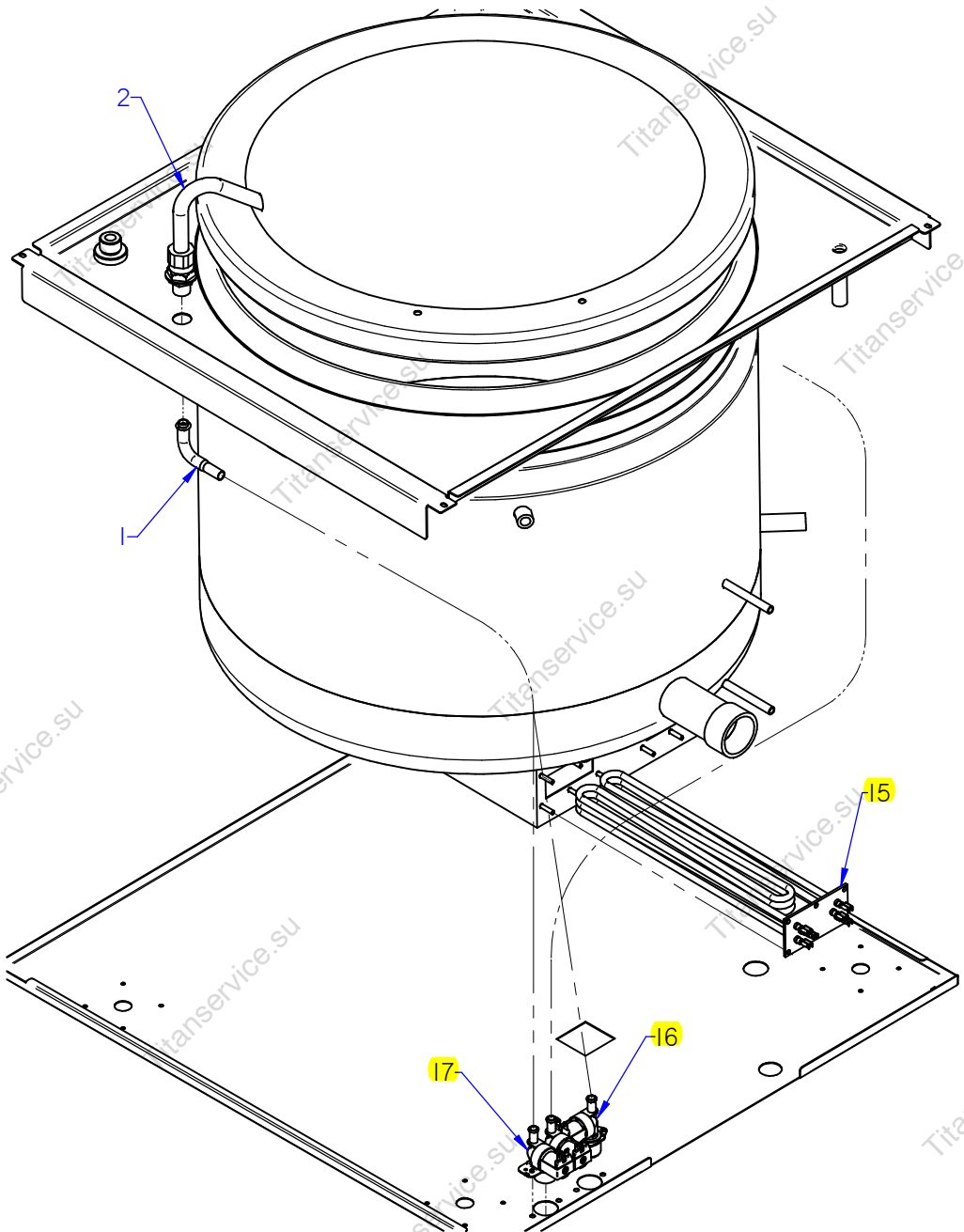
Nº plano / N° plane	Firma	Fecha / Date	Denominación / Denomination:	Laminia / Steel	Fogor Industrial S. Coop. FAGOR
C-2913	<i>(Firma)</i>	2011-10	VALVULAS / VALVES MARMITAS ME9-10 / 9-15 PLUS BM	2	

ITEM MARCADO EN COLOR = REPUESTO RECOMENDADO
COLOURED ITEM = RECOMMENDED SPARE PART



Nº plano / N° plane	Firma	Fecha / Date	Denominación / Denomination:	PART E FUNCIONAL / FUNCTIONAL PART	Lamina / Steel	Fogor Industrial S. Coop. FAGOR
C-2914	<i>(Firma)</i>	2011-10	MARMITAS ME9-10 / 9-15 PLUS BM		3	Onote

ITEM MARCADO EN COLOR = REPUESTO RECOMENDADO
COLOURED ITEM = RECOMMENDED SPARE PART

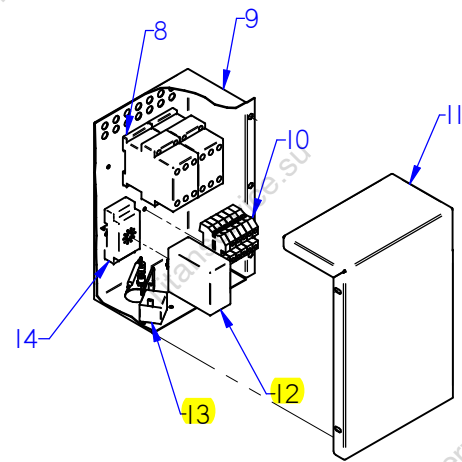
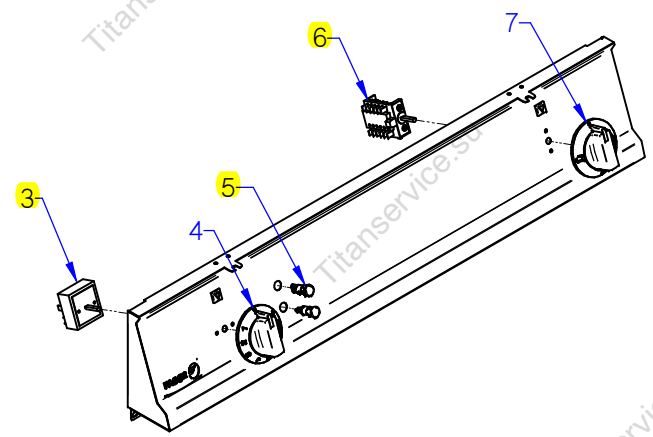
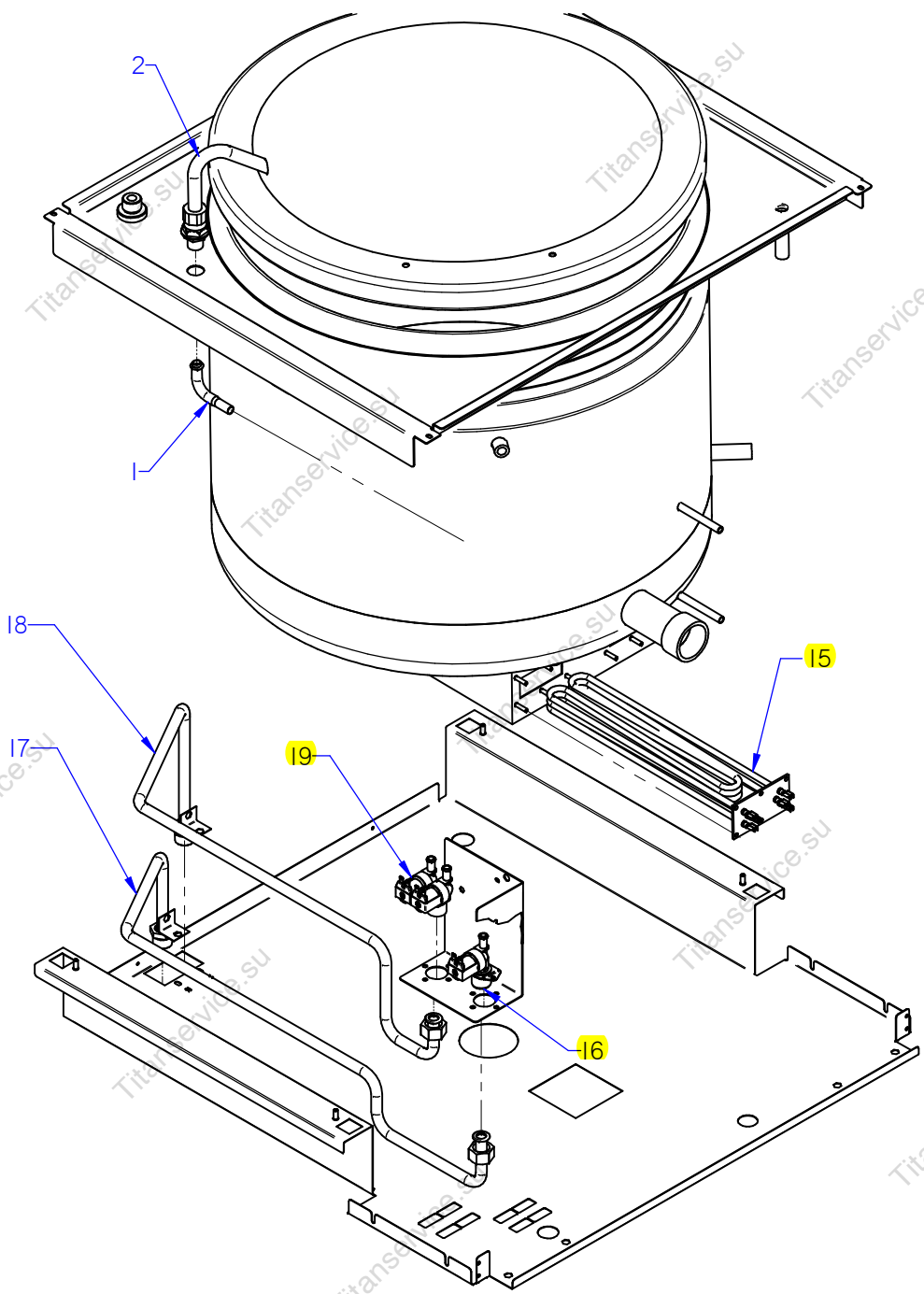


MOD.	MARMITAS / BOILING PANS		ZONA / ZONE	PARTE FUNCIONAL / FUNCTIONAL PART								PLANO DIAGRAM		C-2914
ITEM	CODIGO REFERENCE	DENOMINACION	DENOMINATION	ME9-10 PLUS BM	ME9-15 PLUS BM							ELIMINADO ELIMINATED	INTRODUCID. INTRODUCED	NOTAS
1	S565027000	TUBO ENTRADA TUBO LLENADO	INTAKE PIPE FILLER PIPE	1	1									
	Q306024000	JUNTA18X12.5X1.5	SEAL 18X12.5X1.5	1	1									
	Q223010000	TUERCA 1/2 GAS	NUT 1/2 GAS	1	1									
S/Nº	3676900000	TUBO GOMA NEGRA Ø 17*10	BLACK RUBBER PIPE 17*10	3	3									
	Q881308000	ABRAZADERA 8-14L	CLAMP 8-14L	6	6									
S/Nº	Z201106000	RACORD EN Y	Y-CONNECTION	1	1									
2	S052100000	TUBO LLENADO 01102113	FILLER PIPE 01102113	1	1									
3	S333001000	REGULADOR DE ENERGIA	ENERGY REGULATOR	1	1									
	Q151320000	TORN. ALOMADO M4X6 H.ZINCAD.	HEXAGONAL CURVED HEAD M4X6	2	2									
4	12009013	BOTON DE MANDO MARMITA ME9-	PAN CONTROL BUTTON ME9-	1	1									
5	R693056000	PILOTO AMBAR 41227000A4	AMBER PILOT 41227000A4	1	1							01.02.13		
5	12024669	PILOTO AMBAR Ø18	AMBER PILOT Ø18	1	1								01.02.13	
S/Nº	R693055000	PILOTO VERDE 41227000C7	GREEN PILOT 41227000C7	1	1							01.02.13		
S/Nº	12047390	PILOTO VERDE 230V AC 8KW 16MN	GREEN PILOT 230V AC 8KW 16MN	1	1								01.02.13	
6	R693004000	CONMUTADOR DE FUNCIONES	FUNCTIONS SWITCH	1	1									
	Q042022000	TORNILLO AVELLANADO M4X15	COUNTERSUNK BOLT M4x15	2	2									
7	12009002	MANDO AGUA MARMITA BM	WATER PAN CONTROL BM	1	1									
8	X183011000	CONTACTOR 3RT1024-1AN20 230	CONTACTOR 3RT1024-1AN20 230	2	2									
S/Nº	Z103084000	GUIA CONTACTOR L-138 "	CONTACTOR GUIDE L-138 "	1	1									
	Q419005000	REMACHE 4X8 ALMG3 / ALUMINIO	RIVET 4X8 ALMG3 / ALUMINIUM	2	2									
9	S263006000	CAJA ELECTRICA AD	ELECTRIC BOX AD	1	1									
	Q221342000	REMACHE EXAGONAL M5	HEXAGONAL RIVET M5	3	3									
	Q152004000	TORNIL. APLASTADO M5X13 A 304	FLAT HEADED SCREW M5x13 A 304	2	2									
10	Z683069000	BORNES 16	TERMINALS 16	3	3									
	Z683097000	BORNA PASO WDU16 10204.8	STEP TERMINAL WDU16 10204.8	1	1									
	Z683070000	BORNA A TIERRA WEIDMULLER	TERMINAL TO EARTH WEIDMULLER	1	1									
	Z683096000	TOPE FINAL WEW35 10590.0	END STOP WEW35 10590.0	1	1									
	Z683068000	SEÑALIZ.DEK-6WEIDMULLER	SIGNS DEK-6WEIDMULLER	1	1									
S/Nº	Z103084000	GUIA CONTACTOR L-138 "	CONTACTOR GUIDE L-138 "	1	1									
	Q419005000	REMACHE 4X8 ALMG3 / ALUMINIO	RIVET 4X8 ALMG3 / ALUMINIUM	2	2									

[illegible]

C-2914a	Firma	Fecha / Date	Denominación / Denomination:	Lamina / Sheet	Fogor Industrial S.Coop. FAGOR
		2011-10	MARMITAS ME9-10 / 9-15 PLUS BM S	3	Fogor Industrial S.Coop. FAGOR

ITEM MARCADO EN COLOR = REPUESTO RECOMENDADO
COLOURED ITEM = RECOMMENDED SPARE PART

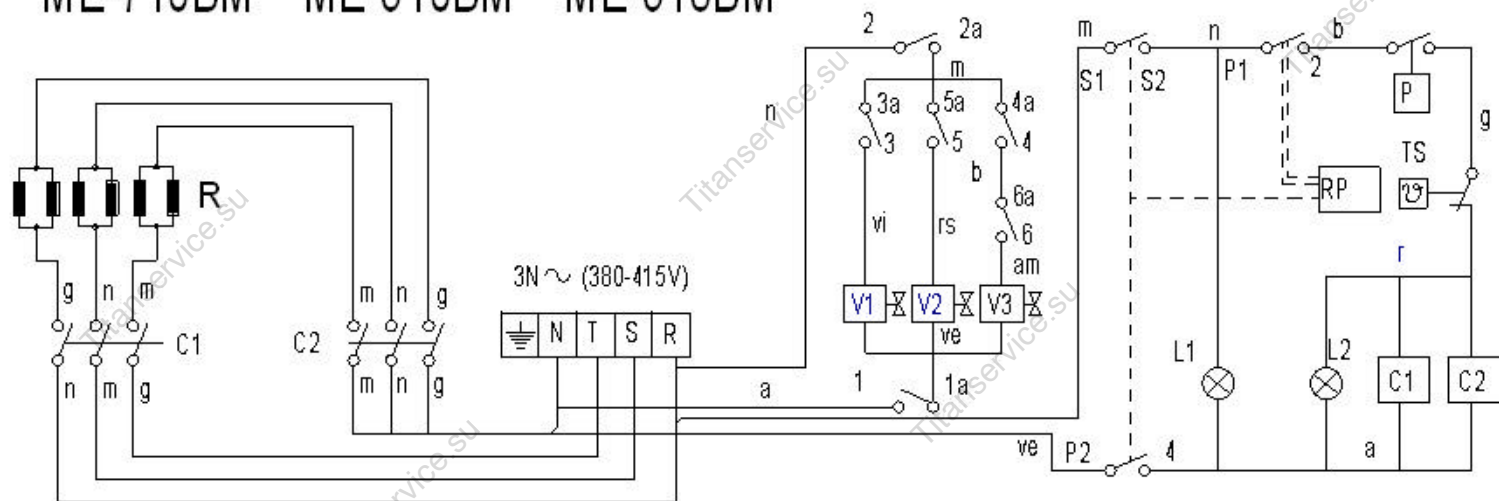


MOD.	MARMITAS / BOILING PANS			ZONA / ZONE		PARTE FUNCIONAL / FUNCTIONAL PART							PLANO DIAGRAM		C-2914a
ITEM	CODIGO REFERENCE	DENOMINACION	DENOMINATION	ME9-10 PLUS BM S	ME9-15 PLUS BM S								ELIMINADO ELIMINATED	INTRODUCID. INTRODUCED	NOTAS
1	S565027000	TUBO ENTRADA TUBO LLENADO	INTAKE PIPE FILLER PIPE	1	1										
	Q306024000	JUNTA18X12.5X1.5	SEAL 18X12.5X1.5	1	1										
	Q223010000	TUERCA 1/2 GAS	NUT 1/2 GAS	1	1										
S/Nº	3676900000	TUBO GOMA NEGRA Ø 17*10	BLACK RUBBER PIPE 17*10	3	3										
	Q881308000	ABRAZADERA 8-14L	CLAMP 8-14L	6	6										
S/Nº	Z201106000	RACORD EN Y	Y-CONNECTION	1	1										
2	S052100000	TUBO LLENADO 01102113	FILLER PIPE 01102113	1	1										
3	S333001000	REGULADOR DE ENERGIA	ENERGY REGULATOR	1	1										
	Q151320000	TORN. ALOMADO M4X6 H.ZINCAD.	HEXAGONAL CURVED HEAD M4X6	2	2										
4	12009013	BOTON DE MANDO MARMITA ME9-	PAN CONTROL BUTTON ME9-	1	1										
5	R693056000	PILOTO AMBAR 41227000A4	AMBER PILOT 41227000A4	1	1							01.02.13			
5	12024669	PILOTO AMBAR Ø18	AMBER PILOT Ø18	1	1								01.02.13		
S/Nº	R693055000	PILOTO VERDE 41227000C7	GREEN PILOT 41227000C7	1	1							01.02.13			
S/Nº	12047390	PILOTO VERDE 230V AC 8KW 16MN	GREEN PILOT 230V AC 8KW 16MN	1	1								01.02.13		
6	R693004000	CONMUTADOR DE FUNCIONES	FUNCTIONS SWITCH	1	1										
7	12009002	MANDO AGUA MARMITA BM	WATER PAN CONTROL BM	1	1										
8	X183011000	CONTACTOR 3RT1024-1AN20 230	CONTACTOR 3RT1024-1AN20 230	2	2										
S/Nº	Z103084000	GUIA CONTACTOR L-138 "	CONTACTOR GUIDE L-138 "	1	1										
	Q419005000	REMACHE 4X8 ALMG3 / ALUMINIO	RIVET 4X8 ALMG3 / ALUMINIUM	2	2										
9	S263006000	CAJA ELECTRICA AD	ELECTRIC BOX AD	1	1										
	Q221342000	REMACHE EXAGONAL M5	HEXAGONAL RIVET M5	3	3										
	Q152004000	TORNIL. APLASTADO M5X13 A 304	FLAT HEADED SCREW M5x13 A 304	2	2										
10	Z683069000	BORNES 16	TERMINALS 16	3	3										
	Z683097000	BORNA PASO WDU16 10204.8	STEP TERMINAL WDU16 10204.8	1	1										
	Z683070000	BORNA A TIERRA WEIDMULLER	TERMINAL TO EARTH WEIDMULLER	1	1										
	Z683096000	TOPE FINAL WEW35 10590.0	END STOP WEW35 10590.0	1	1										
	Z683068000	SEÑALIZ.DEK-6WEIDMULLER	SIGNS DEK-6WEIDMULLER	1	1										
S/Nº	Z103084000	GUIA CONTACTOR L-138 "	CONTACTOR GUIDE L-138 "	1	1										
	Q419005000	REMACHE 4X8 ALMG3 / ALUMINIO	RIVET 4X8 ALMG3 / ALUMINIUM	2	2										
11	263007000	TAPA CAJA ELECTRICA AD	ELECTRIC BOX COVER AD	1	1										
	Q152004000	TORNIL. APLASTADO M5X13 A 304	FLAT HEADED SCREW M5x13	3	3										

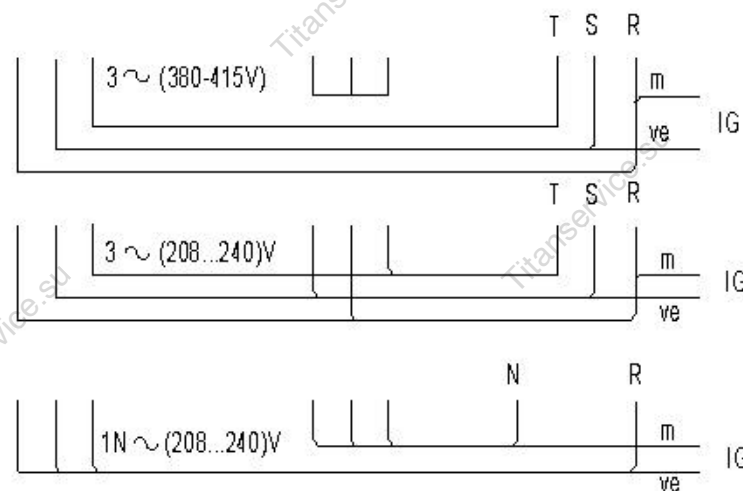
[illegible]

MOD.	MARMITAS / BOILING PANS			ZONA / ZONE	REPUESTOS RECOMENDADOS RECOMMENDED SPARE PART								PLANO DIAGRAM	
ITEM	CODIGO REFERENCE	DENOMINACION	DENOMINATION	ME9-10 PLUS BM	ME9-10 PLUS BM S	ME9-15 PLUS BM	ME9-15 PLUS BM S					ELIMINADO ELIMINATED	INTRODUCID. INTRODUCED	NOTAS
2	X026123000	BISAGRA ADVANCE	HINGE ADVANCE	1	1	1	1							C-2912
3	9220815000	MANOMETRO 36303601	MANOMETER 36303601	1	1	1	1							C-2913
4	S022101000	VALVULA SEGURIDAD 01508004	SAFETY VALVE 01508004	1	1	1	1							C-2913
5	S022103000	VALVULA PRESION 01509004	PRESSURE VALVE 01509004	1	1	1	1							C-2913
7	12044568	VALVULA ANTIRRETORNO 1/2"	NON-RETURN VALVE 1/2"	1	1	1	1						02,04,12	C-2913
15	S102125000	GRIFO VACIADO 2"	DRAINAGE TAP 2"	1	1	1	1							C-2913
3	S333001000	REGULADOR DE ENERGIA	ENERGY REGULATOR	1		1								C-2914
5	12024669	PILOTO AMBAR Ø18	AMBER PILOT Ø18	1		1							01.02.13	C-2914
S/Nº	12047390	PILOTO VERDE 230V AC 8KW 16MN	GREEN PILOT 230V AC 8KW 16MN	1		1							01.02.13	C-2914
6	R693004000	CONMUTADOR DE FUNCIONES	FUNCTIONS SWITCH	1		1								C-2914
12	R343072000	DETECTOR DE NIVELES	LEVEL DETECTOR	1		1								C-2914
13	Z213014000	LIMITADOR TECASA P.	LIMITER TECASA P.	1		1								C-2914
15	T723038000	RESISTENCIA 3X3000W 230V	RESISTOR 3X3000W 230V	2		2								C-2914
16	Z701135000	ELECTROVALVULA SIMP. 220V	SIMPLE SOLENOID VALVE 220V	1		1								C-2914
17	P255001000	ELECTROVALVULA DOBLE	DOUBLE SOLENOID VALVE	1		1								C-2914
3	S333001000	REGULADOR DE ENERGIA	ENERGY REGULATOR		1		1							C-2914a
5	12024669	PILOTO AMBAR Ø18	AMBER PILOT Ø18		1		1						01.02.13	C-2914a
S/Nº	12047390	PILOTO VERDE 230V AC 8KW 16MN	GREEN PILOT 230V AC 8KW 16MN		1		1						01.02.13	C-2914a
6	R693004000	CONMUTADOR DE FUNCIONES	FUNCTIONS SWITCH		1		1							C-2914a
12	12024209	DETECTOR DE NIVELES	LEVEL DETECTOR		1		1							C-2914a
13	Z213014000	LIMITADOR TECASA P.	LIMITER TECASA P.		1		1							C-2914a
15	T723038000	RESISTENCIA 3X3000W 230V	RESISTOR 3X3000W 230V		2		2							C-2914a
16	12025161	ELECTROVALVULA SIMP. 220V	SIMPLE SOLENOID VALVE 220V		1		1							C-2914a
19	12023794	ELECTROVALVULA DOBLE	DOUBLE SOLENOID VALVE		1		1							C-2914a

ME-710BM ME-910BM ME-915BM



IG: Interruptor general
 C1,C2: Contactor de calentamiento
 L1: Lámp para funcionamiento
 L2: Lámp para calentamiento
 P: Presostato 0,3 bares
 R: Resistencias
 RP: Regulador de energía.
 TS: Termostato Seguridad (125°)
 V1: Válvula Agua Caliente
 V2: Válvula Agua Fria
 V3: Válvula Agua Cámara



POSICION	% ±2%	P1 - 2 TON	2 TON+TOF	P2 - 4	S1 - S2
0	0	0	∞		
52°	6%	3"	45"	X	X
84°	10%	4"	38"	X	X
116°	15%	5"	32"	X	X
148°	25%	7"	29"	X	X
180°	30%	9"	30"	X	X
212°	40%	13"	32"	X	X
244°	55%	21"	37"	X	X
276°	75%	45"	60"	X	X
308°	100%	∞	∞	X	X

ve = verde-green-vert
 r = rojo-red-rouge
 m = marron-brown-marron
 g = gris-grey-gris
 n = negro-black-noir
 a = azul-blue-bleu
 b = blanco-white-blanc
 vi = violeta-violette-violet
 am/ve = amarillo/verde
 yellow/green-jaune/vert

S333003000

Esquema teórico ME-710BM, ME-910BM		S333003000	
Nº	Pieza	Materia	Nº Clasificación
Nº	Modificación	Propuesta de	Fecha
1	Introducir Tabla del Regulador de Energía	M. Malló	09-05-2003
		To Errores generales	
		50-100± : 5-25± : 25-50± :	
		> 100± : X±	
		Mecanizado a parte	
		FAGOR	
		Fagor Industrial/Coop. Etk. Migatua	
		MARMITA ELECTRICA	
		Punto de venta	
		HC-72844 -1	
		Sustituye al Nº	
		Sustituido por	

