
DESPIECE TECNICO

Marmitas
Marmites
Boiling Pans
Kochkessel
Pentole

GAMA 900

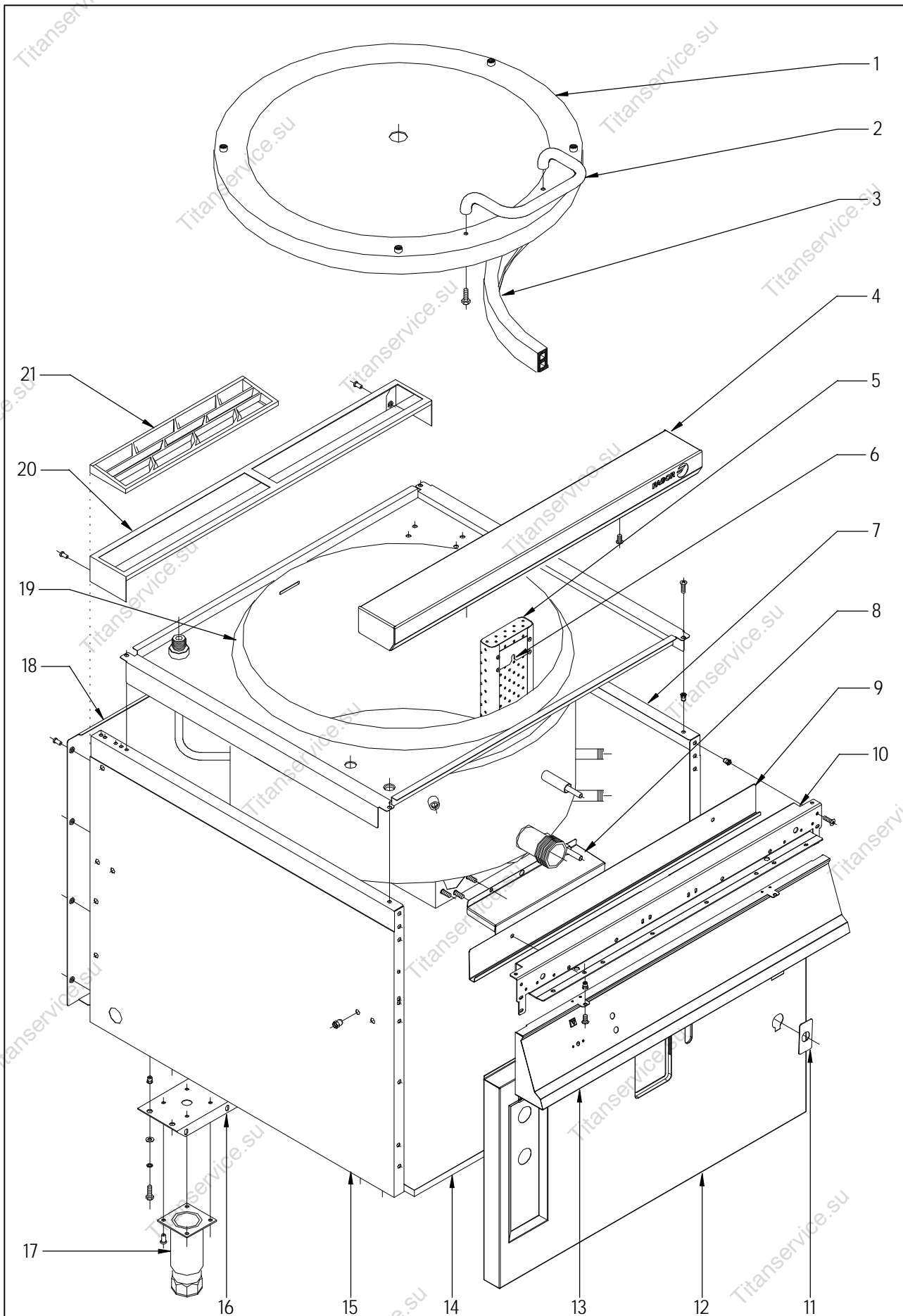
Modelos:

MPE9-10 BM
MPE9-15 BM
MPE9-10 BM S
MPE9-15 BM S

Mayo 2006 May



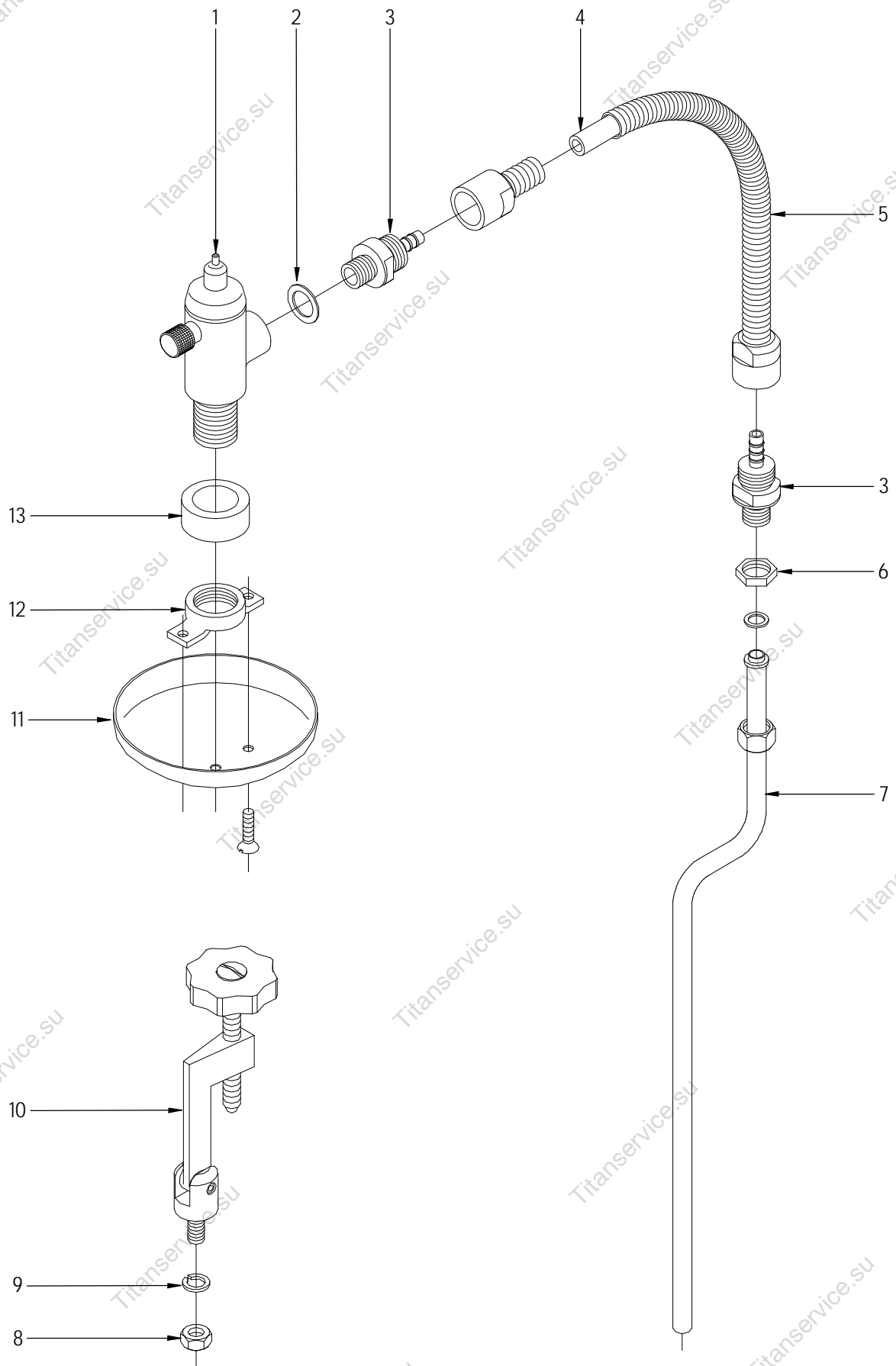
Fagor Industrial



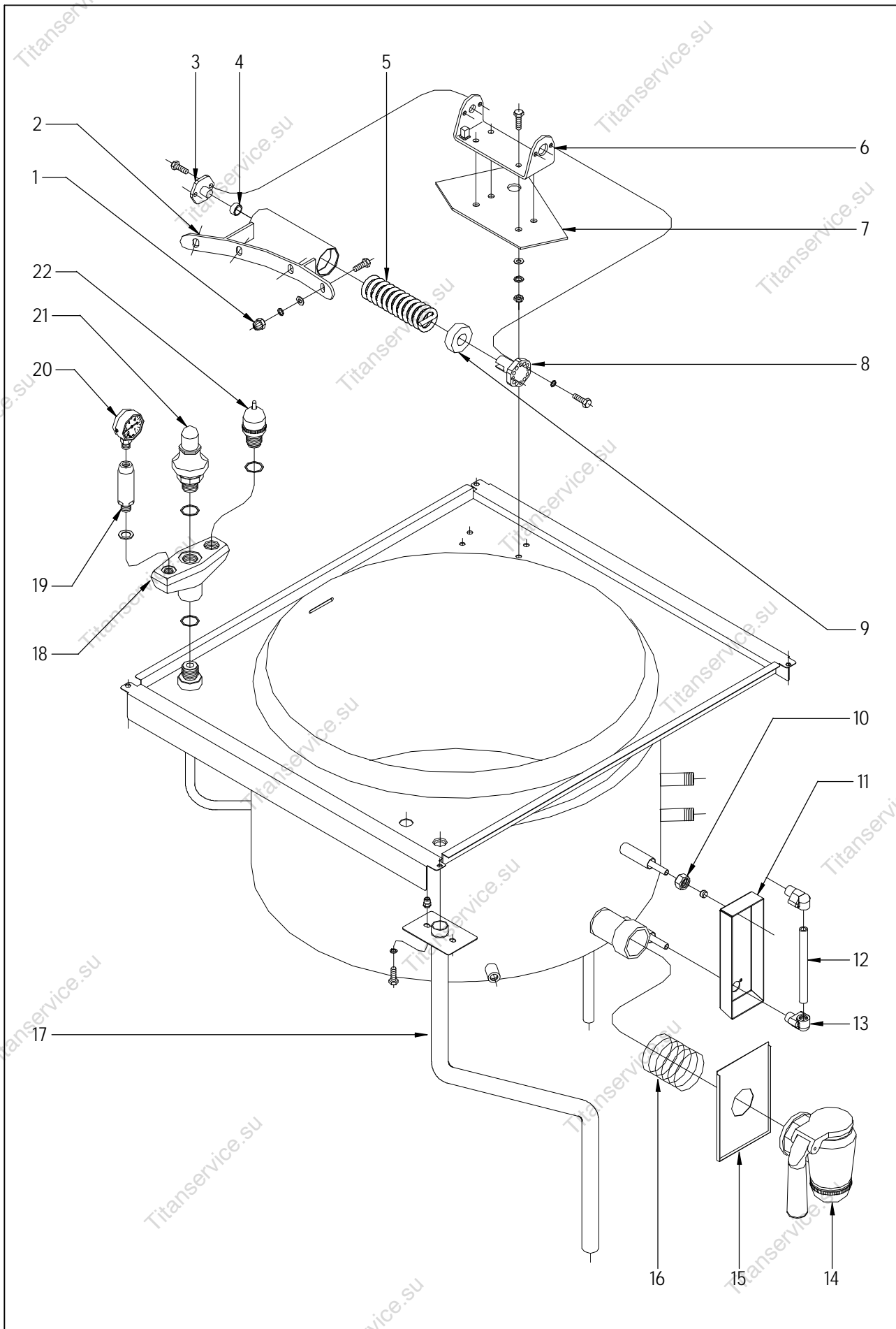
| N plano | Firma | Fecha | Aparato | MUEBLE | Lamina | Fagor Industrial S.Coop. FAGOR |
|---------|--------------------|---------|--------------------------|--------|--------|---------------------------------------|
| C-1712 | <i>[Signature]</i> | 2006-05 | MARMITAS MPE9-10 Y 15 BM | 1 | Onate | |

| MOD. MARMITAS GAMA 900 | | | | | | | | | | | | |
|------------------------|------------|------------------------------|--------|------------|------------|--------------|--------------|--|--------|--|--|-------|
| ZONA | | | MUEBLE | | | | PLANO | | C-1712 | | | |
| ITEM | CODIGO | DENOMINACION | TEXTO | MPE9-10 BM | MPE9-15 BM | MPE9-10 BM S | MPE9-15 BM S | | | | | NOTAS |
| 1 | S056137000 | TAPA COMPLETA | | 1 | 1 | 1 | 1 | | | | | |
| | Q152004000 | TORNILLO APLAST. M5x13 A304 | | 4 | 4 | 4 | 4 | | | | | |
| | Q221342000 | REMACHE EXAGONAL M5 | | 2 | 2 | 2 | 2 | | | | | |
| 2 | S036123000 | ASA DE TAPA | | 1 | 1 | 1 | 1 | | | | | |
| | Q012053000 | TORNILLO EXAGONAL M8x20 A304 | | 2 | 2 | 2 | 2 | | | | | |
| | Q302027000 | ARANDELA 25x8,4x2 | | 2 | 2 | 2 | 2 | | | | | |
| 3 | S056109000 | JUNTA TAPA | | 1 | 1 | 1 | 1 | | | | | |
| 4 | S105401000 | ANTERIOR DE MESA 1M | | 1 | 1 | — | — | | | | | |
| | Q152004000 | TORNILLO APLAST. M5x13 A304 | | 2 | 2 | — | — | | | | | |
| | Q302022000 | ARANDELA 16x6x1,2 A304 | | 2 | 2 | — | — | | | | | |
| 5 | S016101000 | FILTRO DE CUBA | | 1 | 1 | 1 | 1 | | | | | |
| 6 | S036117000 | SOPORTE FILTRO | | 2 | 2 | 2 | 2 | | | | | |
| | Q412000000 | REMACHE TUBULAR 4x8 | | 8 | 8 | 8 | 8 | | | | | |
| 7 | X162811000 | PANEL LATERAL DERECHO G9-00 | | 1 | 1 | — | — | | | | | |
| 7 | X192805000 | PANEL LATERAL DERECH.G9-00S | | — | — | 1 | — | | | | | |
| 7 | S372812000 | PANEL LATERAL DERECH.G9-00S | | — | — | — | 1 | | | | | |
| | Q221343000 | REMACHE EXAGONAL M6 | | 4 | 4 | — | — | | | | | |
| | Q221342000 | REMACHE EXAGONAL M5 | | 1 | 1 | 1 | 1 | | | | | |
| | Q221342000 | REMACHE EXAGONAL M5 | | 3 | 3 | 3 | 3 | | | | | |
| | Q221342000 | REMACHE EXAGONAL M5 | | 1 | 1 | 1 | 1 | | | | | |
| | Q221343000 | REMACHE EXAGONAL M6 | | 7 | 7 | — | — | | | | | |
| | Q162030000 | TUERCA EXAGONAL M5 | | — | — | 2 | 2 | | | | | |
| S/N | S162608000 | PROTECCION LATERAL DERECHO | | 1 | 1 | 1 | 1 | | | | | |
| | Q221342000 | REMACHE EXAGONAL M5 | | 2 | 2 | 2 | 2 | | | | | |
| | Q152004000 | TORNILLO APLAST. M5x13 A304 | | 2 | 2 | 2 | 2 | | | | | |
| 8 | S166114000 | TAPA RESISTENCIAS | | 1 | 1 | 1 | 1 | | | | | |
| 9 | S162609000 | CANAleta RECOGE-AGUAS | | 1 | 1 | 1 | 1 | | | | | |
| | Q221342000 | REMACHE EXAGONAL M5 | | 2 | 2 | 2 | 2 | | | | | |
| | Q152004000 | TORNILLO APLAST. M5x13 A304 | | 2 | 2 | 2 | 2 | | | | | |
| | | | | | | | | | | | | |
| | | | | | | | | | | | | |

| MOD. | | MARMITAS GAMA 900 | | ZONA | MUEBLE | | | | PLANO | | C-1712 | |
|------|------------|-----------------------------|-------|------------|------------|--------------|--------------|--|-------|--|--------|-------|
| ITEM | CODIGO | DENOMINACION | TEXTO | MPE9-10 BM | MPE9-15 BM | MPE9-10 BM S | MPE9-15 BM S | | | | | NOTAS |
| 10 | U022601000 | ESCUADRA INTE.AMARRE ANT.1M | | 1 | 1 | 1 | 1 | | | | | |
| | Q221342000 | REMACHE EXAGONAL M5 | | 3 | 3 | 3 | 3 | | | | | |
| | Q152004000 | TORNILLO APLAST. M5x13 A304 | | 6 | 6 | 6 | 6 | | | | | |
| | Q221342000 | REMACHE EXAGONAL M5 | | 2 | 2 | 2 | 2 | | | | | |
| 11 | S162610000 | PROTECTOR AGUAS GRIFO NIVEL | | 1 | 1 | 1 | 1 | | | | | |
| 12 | S162801000 | PANEL FRONTAL ME9-10BM | | 1 | — | — | — | | | | | |
| 12 | S232801000 | PANEL FRONTAL ME9-15BM | | — | 1 | — | 1 | | | | | |
| 12 | S162802000 | PANEL FRONTAL ME9-10BM S | | — | — | 1 | — | | | | | |
| | Q012042000 | TORNILLO EXAGONAL M6x15 | | 2 | 2 | 2 | 2 | | | | | |
| | Q302022000 | ARANDELA 16x6x1,2 A304 | | 2 | 2 | 2 | 2 | | | | | |
| 13 | S232803000 | PORTAMANDOS COMPLETO | | 1 | 1 | 1 | 1 | | | | | |
| | Q152004000 | TORNILLO APLAST. M5x13 A304 | | 2 | 2 | 2 | 2 | | | | | |
| 14 | S092611000 | BASE INFERIOR | | 1 | 1 | — | — | | | | | |
| 14 | S092806000 | BASE INFERIOR | | — | — | 1 | — | | | | | |
| 14 | S362809000 | BASE INFERIOR | | — | — | — | 1 | | | | | |
| | Q221343000 | REMACHE EXAGONAL M6 | | 2 | 2 | 2 | 2 | | | | | |
| 15 | X162810000 | PANEL LATERAL IZDO. G9-00 | | 1 | 1 | — | — | | | | | |
| 15 | X192803000 | PANEL LATERAL IZDO. G9-00 | | — | — | 1 | — | | | | | |
| 15 | S372810000 | PANEL LATERAL IZDO. G9-00 | | — | — | — | 1 | | | | | |
| | Q221343000 | REMACHE EXAGONAL M6 | | 4 | 4 | — | — | | | | | |
| | Q221342000 | REMACHE EXAGONAL M5 | | 1 | 1 | 1 | 1 | | | | | |
| | Q221342000 | REMACHE EXAGONAL M5 | | 3 | 3 | 3 | 3 | | | | | |
| | Q221342000 | REMACHE EXAGONAL M5 | | 1 | 1 | 1 | 1 | | | | | |
| | Q221343000 | REMACHE EXAGONAL M6 | | 7 | 7 | — | — | | | | | |
| | Q162030000 | TUERCA EXAGONAL M5 | | — | — | 2 | 2 | | | | | |
| S/N | S162607000 | PROTECCION LATERAL IZQUIER. | | 1 | 1 | 1 | 1 | | | | | |
| | Q221342000 | REMACHE EXAGONAL M5 | | 2 | 2 | 2 | 2 | | | | | |
| | Q152004000 | TORNILLO APLAST. M5x13 A304 | | 2 | 2 | 2 | 2 | | | | | |
| | | | | | | | | | | | | |
| | | | | | | | | | | | | |
| | | | | | | | | | | | | |

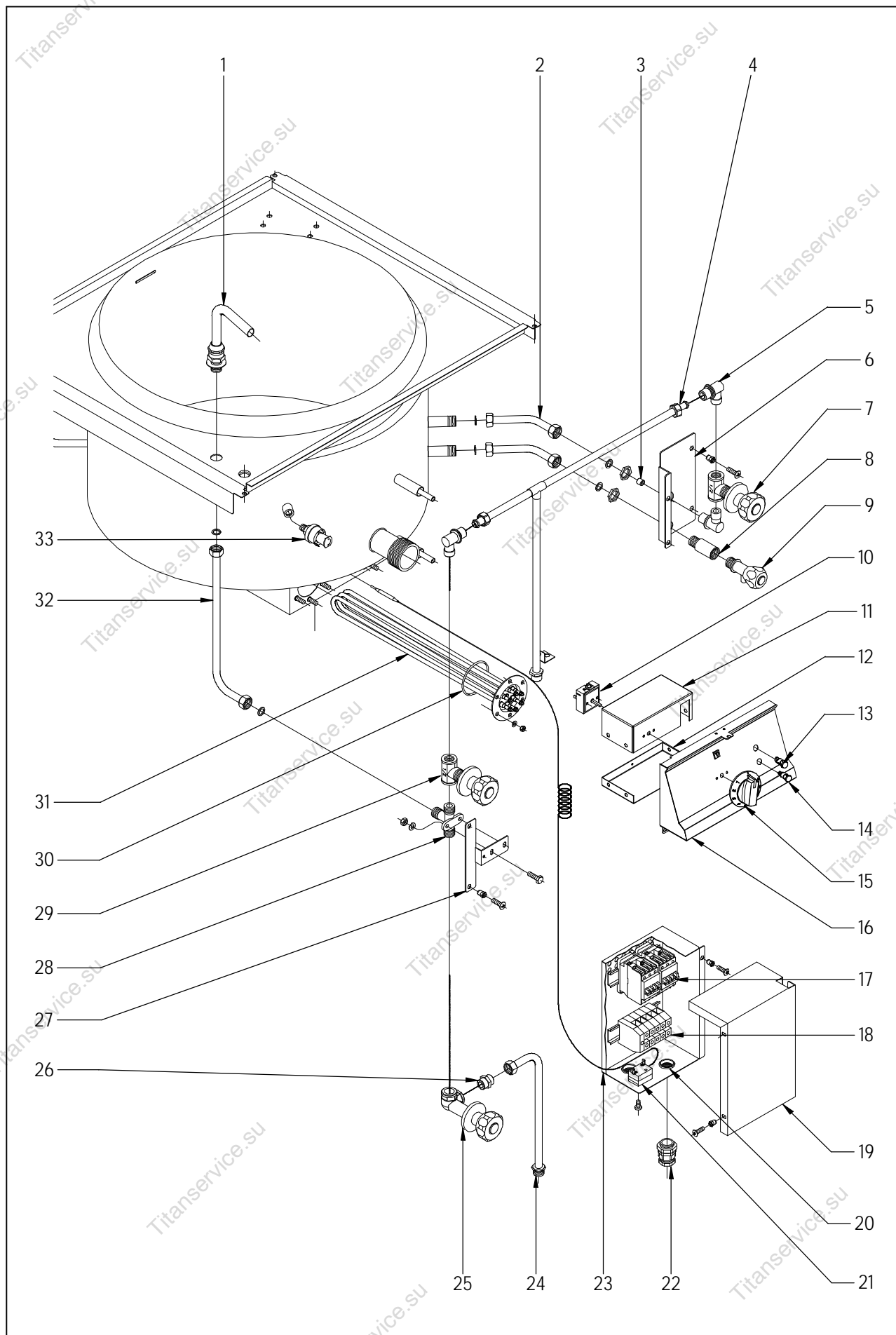


| | | | | | |
|---------|--------------------|---------|--|--------|---------------------------------------|
| N plano | Firma | Fecha | Aparato | Lamina | Fagor Industrial S.Coop. FAGOR |
| C-1713 | <i>[Signature]</i> | 2006-05 | TIRANTES Y VALVULAS SOBREPRESION MARMITAS MPE9-10 Y 15 BM | 2 | Onate |



| | | | | | |
|--------------------------|--------------------|---------|-----------------------------------|--------|---------------------------------------|
| N plano | Firma | Fecha | Aparato | Lamina | Fagor Industrial S.Coop. FAGOR |
| C-1714 | <i>[Signature]</i> | 2006-05 | DESAGÜES, VALVULAS, BISAGRAS ETC. | 3 | Onate |
| MARMITAS MPE9-10 Y 15 BM | | | | | |

| MOD. | | MARMITAS GAMA 900 | | ZONA | DESAGÜES, BISAGRA, VALVULAS Y VISUALIZADOR | | | | PLANO | | C-1714 | |
|------|------------|------------------------------|-------|------------|--|--------------|--------------|--|-------|--|--------|-------|
| ITEM | CODIGO | DENOMINACION | TEXTO | MPE9-10 BM | MPE9-15 BM | MPE9-10 BM S | MPE9-15 BM S | | | | | NOTAS |
| 1 | Q212051000 | TUERCA SOMBRERO M8 | | 4 | 4 | 4 | 4 | | | | | |
| 2 | S036143000 | BISAGRA COMPLETA | | 1 | 1 | 1 | 1 | | | | | |
| | Q012053000 | TORNILLO EXAGONAL M8x20 A304 | | 4 | 4 | 4 | 4 | | | | | |
| | Q232050000 | ARANDELA A8 | | 4 | 4 | 4 | 4 | | | | | |
| | Q262050000 | ARANDELA GROW. A8 A304 | | 4 | 4 | 4 | 4 | | | | | |
| 3 | S116119000 | GIRO DE ASA | | 1 | 1 | 1 | 1 | | | | | |
| | Q012041000 | TORNILLO EXAGONAL M6x10 A304 | | 2 | 2 | 2 | 2 | | | | | |
| 4 | S116126000 | COJINETE CILINDRICO | | 1 | 1 | 1 | 1 | | | | | |
| 5 | S136108000 | RESORTE TAPA 07004 | | 1 | 1 | 1 | 1 | | | | | |
| 6 | S036131000 | SOPORTE BISAGRA COMPLETA | | 1 | 1 | 1 | 1 | | | | | |
| 7 | S026102000 | REFUERZO BISAGRA MARMITAS | | 1 | 1 | 1 | 1 | | | | | |
| | Q012055000 | TORNILLO EXAGONAL M8x30 A304 | | 4 | 4 | 4 | 4 | | | | | |
| | Q162050000 | TUERCA EXAGONAL M8x1 INOX | | 4 | 4 | 4 | 4 | | | | | |
| | Q232050000 | ARANDELA A8 | | 4 | 4 | 4 | 4 | | | | | |
| | Q262050000 | ARANDELA GROW. A8 A304 | | 4 | 4 | 4 | 4 | | | | | |
| | Q300060000 | ARANDELA 18x10x2 | | 4 | 4 | 4 | 4 | | | | | |
| 8 | S116120000 | SENSOR MUELLE | | 1 | 1 | 1 | 1 | | | | | |
| | Q012042000 | TORNILLO EXAGONAL M6x15 | | 2 | 2 | 2 | 2 | | | | | |
| | Q262040000 | ARANDELA GROW. A6 A304 | | 2 | 2 | 2 | 2 | | | | | |
| 9 | S116118000 | CASQUILLO | | 1 | 1 | 1 | 1 | | | | | |
| 10 | S082101000 | TUERCA 3/8 | | 2 | 2 | 2 | 2 | | | | | |
| | U265008000 | BICONO Ø10 | | 2 | 2 | 2 | 2 | | | | | |
| 11 | S042647000 | PROTECCION VISUALIZADOR | | 1 | 1 | 1 | 1 | | | | | |
| | Q032021000 | TORNILLO ALOMADO M4x10 | | 4 | 4 | 4 | 4 | | | | | |
| 12 | S042102000 | TUBO NIVEL SERIGRAFIADO | | 1 | 1 | 1 | 1 | | | | | |
| | Q307069000 | JUNTA TORICA 17,26x12,36x2,5 | | 2 | 2 | 2 | 2 | | | | | |
| 13 | S042101000 | RACORD VISOR NIVEL | | 2 | 2 | 2 | 2 | | | | | |
| 14 | S042107000 | GRIFO VACIADO 2" | | 1 | 1 | 1 | 1 | | | | | |
| 15 | S112803000 | CUBIERTA GRIFO | | 1 | 1 | 1 | 1 | | | | | |
| 16 | S162103000 | MUELLE MARMITA ELECTRICA | | 1 | 1 | 1 | 1 | | | | | |
| | | | | | | | | | | | | |



| | | | | | | |
|---------|--------------------|---------|--------------------------|---------------------------------|--------|---------------------------------------|
| N plano | Firma | Fecha | Aparato | PARTE ELECTRICA Y TOMAS DE AGUA | Lamina | Fagor Industrial S.Coop. FAGOR |
| C-1715 | <i>[Signature]</i> | 2006-05 | MARMITAS MPE9-10 Y 15 BM | 4 | Onate | |

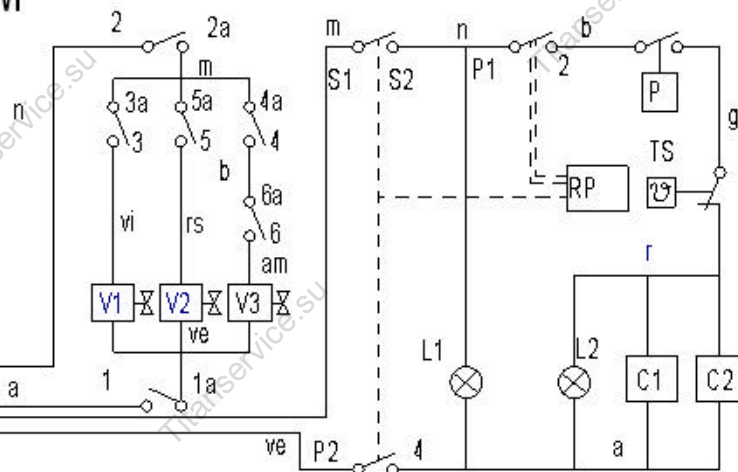
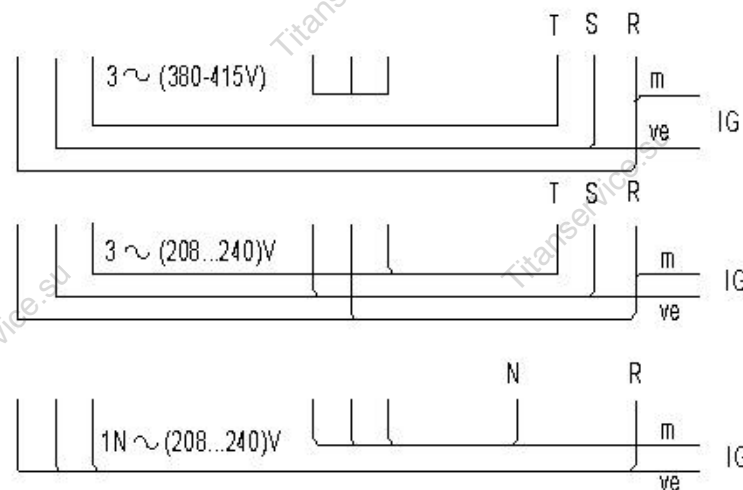
| MOD. | | MARMITAS GAMA 900 | | ZONA | PARTE ELECTRICA Y TOMAS DE AGUA | | | | PLANO | | C-1715 | |
|------|------------|-------------------------------|-------|------------|---------------------------------|--------------|--------------|--|-------|--|--------|-------|
| ITEM | CODIGO | DENOMINACION | TEXTO | MPE9-10 BM | MPE9-15 BM | MPE9-10 BM S | MPE9-15 BM S | | | | | NOTAS |
| 1 | S052100000 | TUBO DE LLENADO 01102113 | | 1 | 1 | 1 | 1 | | | | | |
| 2 | S025006000 | CONDUCCION PURGA COMPL. INF. | | 2 | — | 2 | — | | | | | |
| 2 | S045004000 | CONDUCTO A NIVEL COMPLETO | | — | 2 | — | 2 | | | | | |
| | Q306057000 | ARANDELA 18x12,5x1,5 | | 4 | 4 | 4 | 4 | | | | | |
| 3 | S225012000 | REGULADOR DE LLENADO | | 1 | 1 | 1 | 1 | | | | | |
| 4 | S145010000 | CONDUCCION SUPERIOR COMPL. | | 1 | 1 | — | — | | | | | |
| 4 | S145012000 | CONDUCCION ENTRADA CAMARA | | — | — | 1 | — | | | | | |
| 4 | S225003000 | CONDUCCION ENTRADA CAMARA | | — | — | — | 1 | | | | | |
| | Q221343000 | REMACHE EXAGONAL M6 | | 1 | 1 | 1 | 1 | | | | | |
| | Q012042000 | TORNILLO EXAGON. M6x15 | | 1 | 1 | 1 | 1 | | | | | |
| | Q302022000 | ARANDELA 16x6x1,2 A304 | | 1 | 1 | 1 | 1 | | | | | |
| 5 | S115013000 | CODO LATON | | 3 | 3 | 3 | 3 | | | | | |
| 6 | S092601000 | SOP. GRIFO LLENADO - VACIADO | | 1 | 1 | 1 | 1 | | | | | |
| | Q152004000 | TORNILLO APLAST. M5x13 A304 | | 2 | 2 | 2 | 2 | | | | | |
| | Q221342000 | REMACHE EXAGONAL M5 | | 2 | 2 | 2 | 2 | | | | | |
| 7 | S102111000 | CUER.LLAVE PASO AT.CUADRADO | | 1 | 1 | 1 | 1 | | | | | |
| | S012102000 | EMBELLECEDOR | | 1 | 1 | 1 | 1 | | | | | |
| | S102110000 | MANILLA PLASTICO AGUA CALIEN. | | 1 | 1 | 1 | 1 | | | | | |
| 8 | S045006000 | CASQUILLO GRIFO NIVEL | | 1 | 1 | 1 | 1 | | | | | |
| 9 | S102124000 | GRIFO DE NIVEL C/MANILLA NEG. | | 1 | 1 | 1 | 1 | | | | | |
| 10 | S333001000 | REGULADOR DE ENERGIA | | 1 | 1 | 1 | 1 | | | | | |
| | Q151320000 | TOR. ALOMADO M4x6 H. ZINCADO | | 2 | 2 | 2 | 2 | | | | | |
| 11 | S162612000 | CAJA PROTEC. REGULA. ENERGIA | | 1 | 1 | 1 | 1 | | | | | |
| | Q221342000 | REMACHE EXAGONAL M5 | | 4 | 4 | 4 | 4 | | | | | |
| 12 | S162613000 | TAPA INF.CAJA PROTEC. REGULA. | | 1 | 1 | 1 | 1 | | | | | |
| | Q152004000 | TORNILLO APLAST. M5x13 A304 | | 4 | 4 | 4 | 4 | | | | | |
| 13 | R693056000 | PILOTO AMBAR | | 1 | 1 | 1 | 1 | | | | | |
| 14 | R693055000 | PILOTO VERDE 41227000C7 | | 1 | 1 | 1 | 1 | | | | | |
| 15 | S162102000 | BOTON DE MANDO COMPLETO | | 1 | 1 | 1 | 1 | | | | | |
| 16 | S232803000 | PORTAMANDOS COMP. ME9-10BM | | 1 | 1 | 1 | 1 | | | | | |
| | Q152004000 | TORNILLO APLAST. M5x13 A304 | | 2 | 2 | 2 | 2 | | | | | |

| MOD. | | MARMITAS GAMA 900 | | ZONA | PARTE ELECTRICA Y TOMAS DE AGUA | | | | PLANO | | C-1715 | |
|------|------------|----------------------------------|-------|------------|---------------------------------|--------------|--------------|--|-------|--|--------|-------|
| ITEM | CODIGO | DENOMINACION | TEXTO | MPE9-10 BM | MPE9-15 BM | MPE9-10 BM S | MPE9-15 BM S | | | | | NOTAS |
| 17 | X183011000 | CONTAC. 3RT1024-1AN20 230V50H | | 2 | 2 | 2 | 2 | | | | | |
| | Z103084000 | GUIA CONTACTOR L-138 | | 1 | 1 | 1 | 1 | | | | | |
| | Q419005000 | REMACHE 4x8 ALMG3 / ALUMINIO | | 2 | 2 | 2 | 2 | | | | | |
| 18 | Z683069000 | BORNA16 | | 3 | 3 | 3 | 3 | | | | | |
| | Z683097000 | BORNA WDU16 10204.8 | | 1 | 1 | 1 | 1 | | | | | |
| | Z683070000 | BORNA TIERRA WEIDMULLER | | 1 | 1 | 1 | 1 | | | | | |
| | Z683096000 | TOPE FINAL WEW35 10590.0 | | 1 | 1 | 1 | 1 | | | | | |
| | Z683068000 | SEÑALIZ.DEK-6 WEIDMULLER | | 1 | 1 | 1 | 1 | | | | | |
| | Z103084000 | GUIA CONTACTOR L-138 | | 1 | 1 | 1 | 1 | | | | | |
| | Q419005000 | REMACHE 4x8 ALMG3 / ALUMINIO | | 2 | 2 | 2 | 2 | | | | | |
| 19 | S093014000 | TAPA CAJA ELECTRICA | | 1 | 1 | 1 | 1 | | | | | |
| | Q152004000 | TORNILLO APLAST. M5x13 A304 | | 3 | 3 | 3 | 3 | | | | | |
| 20 | X723014000 | PASAMUROS AMETRO 30 | | 2 | 2 | 2 | 2 | | | | | |
| 21 | Z213014000 | LIMITADOR TECASA | | 1 | 1 | 1 | 1 | | | | | |
| | Q081330000 | TOR. ALOM. BZ-3,5x6,5 H. ZINCADO | | 2 | 2 | 2 | 2 | | | | | |
| S/N | Z203060000 | AMARRE LIMITADOR TECASA | | 1 | 1 | 1 | 1 | | | | | |
| | Q221341000 | REMACHE EXAGONAL M4 | | 2 | 2 | 2 | 2 | | | | | |
| | Q012021000 | TORNILLO EXAGON. M4x10 A304 | | 2 | 2 | 2 | 2 | | | | | |
| 22 | R023013000 | PRENSA ESTOPAS | | 1 | 1 | 1 | 1 | | | | | |
| | R023025000 | CONTRATUERCA (GAES) | | 1 | 1 | 1 | 1 | | | | | |
| | R023026000 | JUNTA DE GOMA (GAES) | | 1 | 1 | 1 | 1 | | | | | |
| 23 | S092606000 | CAJA ELECTRICA | | 1 | 1 | 1 | 1 | | | | | |
| | Q221342000 | REMACHE EXAGONAL M5 | | 3 | 3 | 3 | 3 | | | | | |
| | Q152004000 | TORNILLO APLAST. M5x13 A304 | | 2 | 2 | 2 | 2 | | | | | |
| 24 | S105020000 | CONDUCCION ENTRADA INFERIOR | | 1 | 1 | — | — | | | | | |
| 24 | S145015000 | CONDUCCION INFERIOR COMPL. | | — | — | 1 | — | | | | | |
| 24 | S225017000 | CONDUCCION INFERIOR COMPL. | | — | — | — | 1 | | | | | |
| | Q221343000 | REMACHE EXAGONAL M6 | | 1 | 1 | 1 | 1 | | | | | |
| | Q012042000 | TORNILLO EXAGON. M6x15 | | 1 | 1 | 1 | 1 | | | | | |
| | Q302022000 | ARANDELA 16x6x1,2 A304 | | 1 | 1 | 1 | 1 | | | | | |
| | Q306057000 | ARANDELA 18x12,5x1,5 | | 3 | 3 | 3 | 3 | | | | | |

[illegible]

[illegible]

The diagram shows a three-phase power supply (3N ~ (380-415V)) connected to a motor (M) through a circuit breaker (C1) and a thermal relay (R). The thermal relay is connected to the motor through a circuit breaker (C2). The thermal relay has three phases (m, n, g) and a common terminal (n). The motor has three phases (m, n, g) and a common terminal (n). The thermal relay is connected to the motor through a circuit breaker (C2).



| POSICION / | % $\pm 2\%$ | P1 TON | - 2 TON+TOF | P2 - 4 | S1 - S |
|---------------|-------------|-----------|----------------|--------|--------|
| 0 | 0 | 0 | ∞ | | |
| 52° | 6% | 3" | 45" | X | X |
| 84° | 10% | 4" | 38" | X | X |
| 116° | 15% | 5" | 32" | X | X |
| 148° | 25% | 7" | 29" | X | X |
| 180° | 30% | 9" | 30" | X | X |
| 212° | 40% | 13" | 32" | X | X |
| 244° | 55% | 21" | 37" | X | X |
| 276° | 75% | 45" | 60" | X | X |
| 308° | 100% | ∞ | ∞ | X | X |

IG: Interruptor general
 C1,C2: Contactor de calentamiento
 L1: Lámpara funcionamiento
 L2: Lámpara calentamiento
 P: Presostato 0,3 bares
 R: Resistencias
 RP: Regulador de energía
 TS: Termostato Seguridad (125°)
 V1: Válvula Agua Caliente
 V2: Válvula Agua Fría
 V3: Válvula Agua Cámara

ve = verde-green-vert
r = rojo-red-rouge
m = marron-brown-marron
g = gris-grey-gris
n = negro-black-noir
a = azul-blue-bleu
b = blanco-white-blanc
vi = violeta-violette-violet
am/ve = amarillo/verde
yellow/green-jaune/vert

S333003000

| | | | | | |
|--|---|--------------|---|------------------------|-----------|
| Esquema Torbo ME-7108 M, ME-9108 M | | S333003000 | | | |
| N° | Peza | Materia | N° Clasificación | Acabado | |
| N° | Modificación | Propuesta de | Fecha | Tolerancias generales | |
| 1 | Introducción Tabla de Regulador de Energía | M. Malló | 09-05-2003 | | |
| | | | | <5± | 50-100± : |
| | | | | 5-25± : | > 100± |
| | | | | 25-50± : | ○± |
| | | | | | |
| | | | | | |
| | | Firma | Fecha | | |
| Dibujado | KONTX I | 31-05-1997 |  | | |
| Proyectado | M. Malló | 31-05-1997 | | | |
| Comprobado |  | 31-05-1997 | | | |
| Escala | | | | | |
| Fagor Industria Unip. E.L., Miraflores | | | | Mecanizado superficial | |
| <p style="text-align: center;">MARMITA ELECTRICA</p> | | | | Plano número | |
| | | | | HC-72844 -1 | |
| | | | | Señalado al N° | |
| Plano homologado es el que aparece en el plano | | | | Señalado por | |