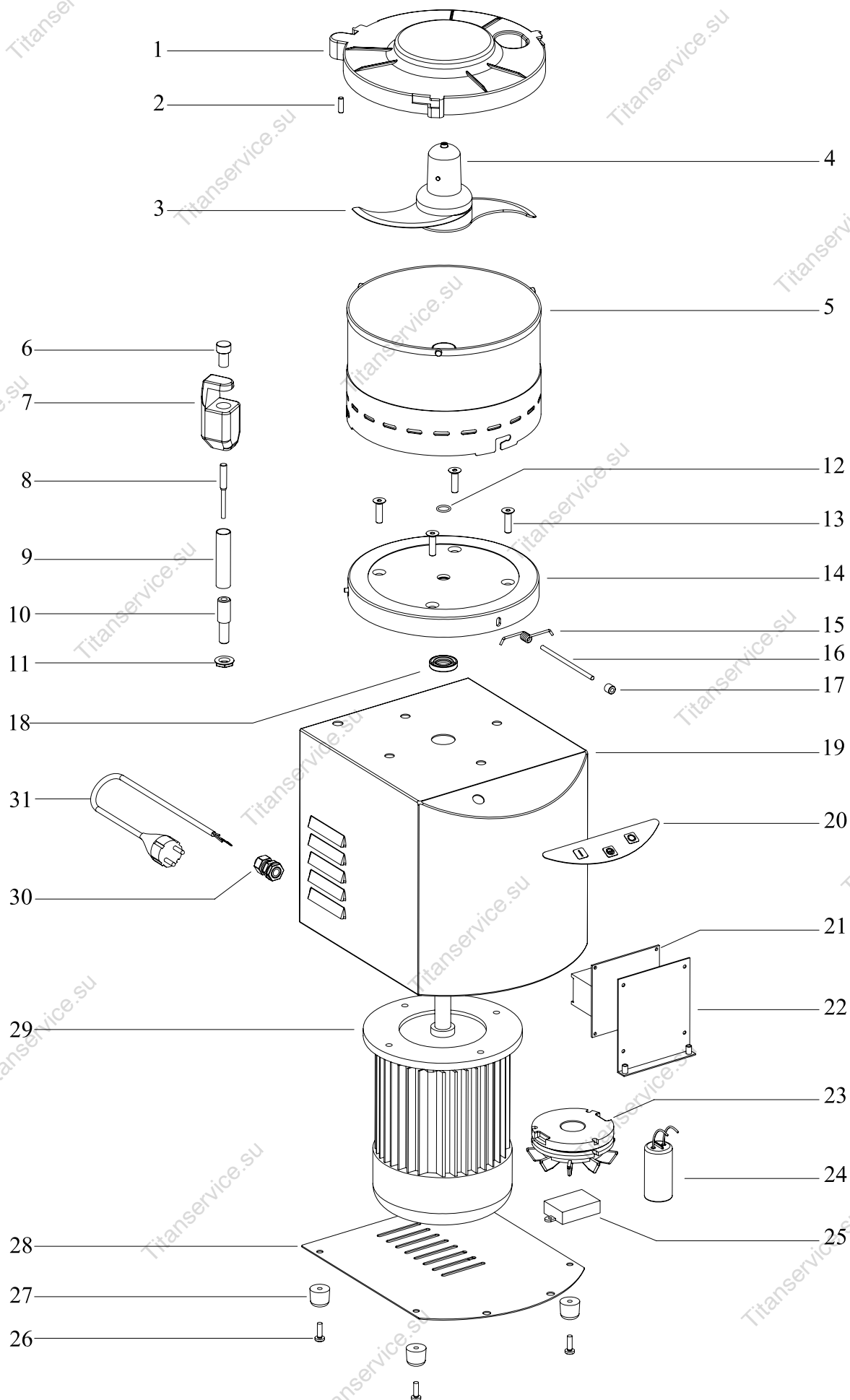


UTTER LT.3/5/8 CE

This exploded view diagram illustrates the assembly of the UTTER LT.3/5/8 CE. The components are numbered as follows:

- 1: Upper housing with mounting tabs.
- 2: Small pin or screw.
- 3: Blade assembly with a central shaft.
- 4: Blade mounting cap.
- 5: Main cylindrical body.
- 6: Small pin.
- 7: Mounting bracket.
- 8: Long screw.
- 9: Short screw.
- 10: Short screw.
- 11: Washer.
- 12: Pin.
- 13: Pin.
- 14: Base plate with mounting holes.
- 15: Small screw.
- 16: Small screw.
- 17: Small screw.
- 18: Main motor housing.
- 19: Motor housing with ventilation slots.
- 20: Control panel with buttons.
- 21: Mounting bracket.
- 22: Mounting plate.
- 23: Blade mounting cap.
- 24: Battery pack.
- 25: Small electronic component.
- 26: Pin.
- 27: Pin.
- 28: Pin.
- 29: Pin.
- 30: Plug.
- 31: Plug.



CUTTER LT. 3/5/8

N.	Denominazione	Codice	
1	COPERCHIO PLASTICA L3	FCU114	
	COPERCHIO PLASTICA L5/L8	FCU115	
2	MAGNETE COPERCHIO CUTTER	FCU171	
3	LAME x MOZZO L3 (coppia)	FCU110	
	LAME x MOZZO L5/L8 (coppia)	FCU111	
4	MOZZO COMPLETO L3	FCU112	
	MOZZO COMPLETO L5/L8	FCU113	
5	VASCA INOX L3	FCU148	
	VASCA INOX L5	FCU149	
	VASCA INOX L8	FCU151	
6	TAPPO PORTAMICRO	FCU172	
7	SUPPORTO MICRO	FCU173	
8	MICRO MAGNETICO	FCU120	
9	COLONNINA MICRO L3/L5	FCU174	
	COLONNINA MICRO L8	FCU175	
10	PERNO FISSAGGIO COLONNINA	FCU127	
11	DADO x PERNO FISSAGGIO	FCU128	
12	O-RING x mod.L3	FCU153	
	O-RING x mod.L5/L8	FCU154	
13	VITE INOX x FLANGIA	FCU124	
14	FLANGIA ALLUMINIO L3	FCU125	
	FLANGIA ALLUMINIO L5/L8	FCU126	
15	MOLLA PERNO FLANGIA L3	FCU157	
	MOLLA PERNO FLANGIA L5/L8	FCU158	
16	PERNO FLANGIA L3	FCU155	
	PERNO FLANGIA L5/L8	FCU156	
17	BOCCOLA FERMA PERNO L3	FCU159	
	BOCCOLA FERMA PERNO L5/L8	FCU160	
18	PARAOLIO L3	FCU161	
	PARAOLIO L5/L8	FCU162	
19	CARENA INOX L3	FCU176	
	CARENA INOX L5/L8	FCU177	
20	PULSANTIERA DIGITALE	FCU178	
21	SCHEDA B.T. 230V/50hz	FCU179	
	SCHEDA B.T. 400V/50hz	FCU179	
22	STAFFA SCHEDA	FCU180	
23	FRENO MOTORE L3	FCU181	
	FRENO MOTORE L5/L8	FCU182	
24	CONDENSATORE L3	FCU183	
	CONDENSATORE L5/L8	FCU184	

[illegible]