



MODULAR CUBER

PARTS LIST

[CHINA, TAIWAN, HHK]

M028-C201, -C251, -C203, -C204, -C205, -C206, -C207
-C208, -C209, -C210, -C211, -D208, -D209, -D251

F-1 JUN. 2016
F-2 AUG. 2016
J-1 SEP. 2019
K-1 JAN. 2020
K-2 NOV. 2020
L-0 JAN. 2021
M-1 FEB. 2023

IM-220AWA
IM-220AWA-23
IM-220AWA-21
IM-220AWA-S
IM-220AWA-S-21
IM-220AWA-Z
IM-220AWB
IM-220AWB-21
IM-220AB-Z

List of Specifications

IM-220AWA IM-220AWB	M028-C201	For CHINA
IM-220AWA	M028-C251	For TAIWAN 230V 60Hz
IM-220AWA-23	M028-C204	For CHINA
IM-220AWA-21 IM-220AWB-21	M028-C205	For CHINA 21mm ice cube
IM-220AWA IM-220AWB	M028-C206	For CHINA SUS FRONT PANEL
IM-220AWA-Z IM-220AWB-Z	M028-C207	For China Automatic cleaning system
IM-220AWA-21	M028-C208	For HHK 21mm ice cube
IM-220AWA	M028-C209	For HHK
IM-220AWB-21	M028-C210	For HHK 21×21×14mm 角氷 IOT
IM-220AWB	M028-C211	For HHK IOT
IM-220AWA-S-21	M028-D208	For HHK 21mm ice cube SUS
IM-220AWA-S	M028-D209	For HHK SUS
IM-220AWA-S	M028-D251	For TAIWAN 60Hz SUS
IM-220AWB-Z	M028-C203	For CHINA

AUXILIARY CODE

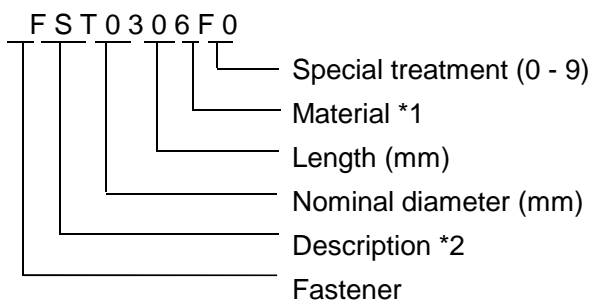
U - 1

The auxiliary code is the first two characters in the serial number. The first character indicates the production year. Years progress or regress in alphabetical order. The series of letters and skipped letters depend on UL listing, production, and model. See the auxiliary code(s) and corresponding year(s) on the front cover.

The second character indicates significant part changes within the same year. Base is "1" and this number advances for each change. If there is no significant part change at the turn of the year, this number starts from "0."

FASTENER PART NUMBER

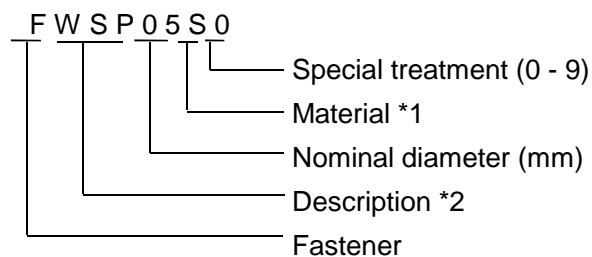
SCREWS



*1 Material

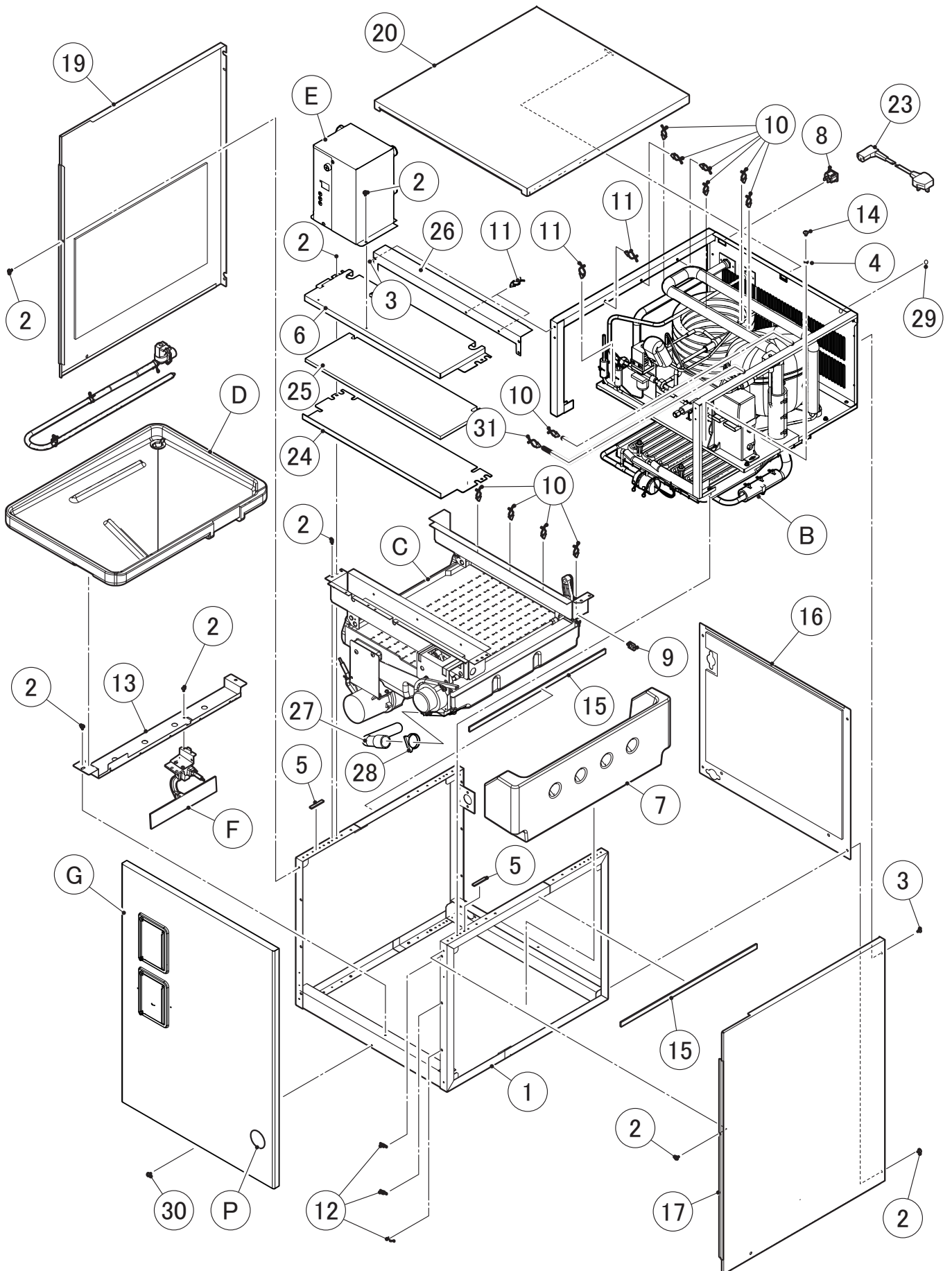
F: Steel
S: Austenitic stainless steel
M: Martensitic stainless steel
B: Copper alloy
P: Polycarbonate
N: Polyamide
V: PVC
A: ABS
X: Polyacetal
L: Aluminum

NUTS & WASHERS



*2 Description

First letter
S: Machine screw
T: Tapping screw
M: Wood screw
B: Bolt
W: Washer
N: Nut



MODEL: **IM-220AWA**
IM-220AWB

TITLE: **A. ICE CUBER ASSY**

INDEX NO.	DESCRIPTION	MATERIAL OR MODEL NUMBER	PART NUMBER	REQ'D NUMBER					
				F-1	F-2 J-0	J-1	K-1	K-2 M-0	M-1 and later
B	REFRIGERATION CIRCUIT		124534A01	1	1	1	1	1	-
		220AWB HHK	124534002	-	-	-	-	-	1
		220AWA-23	1H6163A01	-	1	1	1	1	1
		220AWA-21 220AWA-S-21	1H6171A01	-	1	1	1	1	1
		220AWB-21 China HHK	1H6171001	-	-	-	-	-	1
		220AWA-Z	1H6453A01	-	1	1	1	1	1
		220AWB-Z China	1H6453001	-	-	-	-	-	1
C	MECHANISM ASSY		121972A01	1	-	-	-	-	-
			121972A02	-	1	1	1	1	1
		220AWA(-23) China 220AWA-S	121972A04	-	-	-	-	1	1
		220AWA-21 China 220AWB-21 China 220AWA-S-21	121972001	1	1	1	1	-	-
			121972A05	-	-	-	-	1	1
		220AWA-21 HHK	121972A03	-	-	-	-	1	1
		220AWA-Z 220AWB-Z China	1H6423A01	-	-	-	-	1	1
D	WATER CIRCUIT ASSY		262379A01	1	1	1	1	1	1
E	CONTROL BOX ASSY		263817A01	1	1	1	1	1	1
		220AWA-Z 220AWB-Z China	2X4620A01	-	-	-	-	1	1
F	BIN SWITCH-2 ASSY		477489A01	1	1	1	1	1	1
G	FRONT PANEL ASSY	220AWA-Z 220AWB-Z China	2X4498001	-	-	-	-	1	1
P	LABEL LOCATION		262806---	1	1	1	1	1	1
		220AWA-Z 220AWB-Z China	2X4626---	-	-	-	-	1	1
Q	ACCESSORIES		A02540---	1	1	1	1	1	1
1	FRAME		377007G02	1	1	1	1	1	1
2	FLANGE BOLT (C-TITE)		FTR0408M0	22	22	22	22	21	23
		SUS front panel 220AWA-Z 220AWB-Z China	FTR0408M0	-	-	-	-	23	23
3	T2 TRUSS HEAD SCREW		FT20408F0	4	4	4	4	4	6

MODEL: **IM-220AWA**
IM-220AWB

TITLE: **A. ICE CUBER ASSY**

INDEX NO.	DESCRIPTION	MATERIAL OR MODEL NUMBER	PART NUMBER	REQ'D NUMBER					
				F-1	F-2 J-0	J-1	K-1	K-2 M-0	M-1 and later
4	SPRING WASHER		FWSP05S0	1	-	-	-	-	-
			FWSP04S0	-	1	1	1	1	1
5	INSULATION (B) - FRAME		477491Z01	2	2	2	2	2	2
6	COVER		476755G01	1	1	1	1	1	1
		220AWA-Z 220AWB-Z China	3Z2070M01	-	-	-	-	1	1
7	CHUTE		121939P01	1	1	1	1	1	1
8	CONNECTOR		P02656-01	1	1	1	1	1	1
9	WIRE SADDLE		428060-03	1	1	1	1	1	1
10	WIRE RETAINER	No.249	427902-03	10	10	10	10	10	10
11	WIRE RETAINER	No.4253	427902-05	3	3	3	3	2	2
		No.4253 220AWA-Z 220AWB-Z China	427902-05	-	-	-	-	3	3
12	NYLON TIE	CV-70	7920-0001	3	3	3	3	3	3
13	FRAME - BIN SWITCH		262285M02	1	1	1	1	1	1
14	TRUSS HEAD MACHINE SCREW		FST0408S0	1	1	1	1	1	1
15	INSULATION - FRAME		477255Z01	2	2	2	2	2	2
16	REAR PANEL		376519G01	1	1	1	1	1	1
17	SIDE PANEL (R)		377631G01	1	1	-	-	-	-
			377631G02	-	-	1	1	1	1
		220AWA-Z 220AWB-Z China	377631001	-	-	-	-	1	1
18	T2 TRUSS HEAD SCREW		FT20408S0	2	2	2	2	2	-
19	SIDE PANEL (L)		377632G01	1	1	1	1	1	1
		220AWA-Z 220AWB-Z China	377632G02	-	-	-	-	1	1
20	TOP PANEL		262283M01	1	1	1	1	1	1
		220AWB China 220AWB (-21) China HHK 220AWB-Z China	262283M02	-	-	-	-	-	1
		SUS front panel	278766M01	-	-	-	-	1	-
			278766M02	-	-	-	-	-	1
21	FRONT PANEL ASSY	Except 220AWA-Z SUS front panel 220AWB-Z China	376560G01	1	1	1	1	1	1
		SUS front panel	278815G01	-	-	-	-	1	1
		220AWB-Z China	2X4498001	-	-	-	-	-	1

MODEL: **IM-220AWA**
IM-220AWB

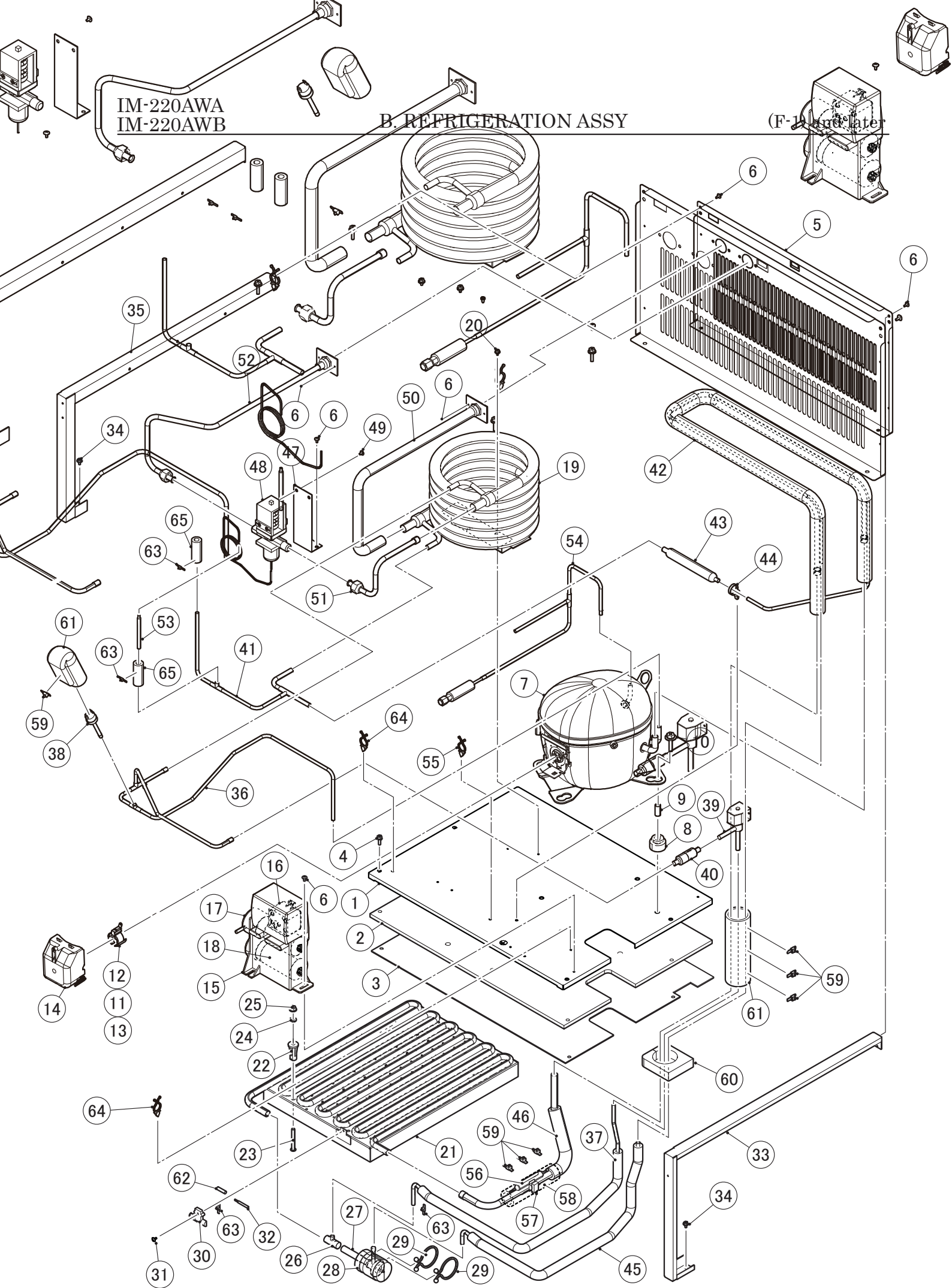
TITLE: **A. ICE CUBER ASSY**

INDEX NO.	DESCRIPTION	MATERIAL OR MODEL NUMBER	PART NUMBER	REQ'D NUMBER					
				F-1	F-2 J-0	J-1	K-1	K-2 M-0	M-1 and later
22	FILTER	Except 220AWA-Z SUS front panel 220AWB-Z China	262292G01	1	1	1	1	1	0
23	POWER CORD	China	P01960-01	1	1	1	1	1	1
		Taiwan	P01257-01	-	1	1	1	1	1
		HHK	P02795-01	-	-	-	-	1	1
24	PLATE - TOP	220AWA-Z 220AWB-Z China	3Z2168M01	-	-	-	-	1	1
25	INSULATION - TOP	220AWA-Z 220AWB-Z China	3Z2102Z01	-	-	-	-	1	1
26	FRAME	220AWA-Z 220AWB-Z China	3Z2080M01	-	-	-	-	1	1
27	HOSE	220AWA-Z 220AWB-Z China	3Z2086Z01	-	-	-	-	1	1
28	HOSE CLAMP	220AWA-Z 220AWB-Z China	435947-09	-	-	-	-	1	1
29	GROMMET	220AWB China 220AWB-21 China HHK	410666-02	-	-	-	-	-	1
30	PAN HEAD MACHINE SCREW		FSK0425S0	-	-	-	-	1	1
31	CLAMP		427902-02	-	-	-	-	1	1

IM-220AWA
IM-220AWB

B. REFRIGERATION ASSY

(F-1) and later



MODEL: **IM-220AWA**
IM-220AWB

TITLE: **B. REFRIGERATION ASSY**

INDEX NO.	DESCRIPTION	MATERIAL OR MODEL NUMBER	PART NUMBER	REQ'D NUMBER					
				F-1	F-2 J-0	J-1	K-1	K-2 M-0	M-1 and later
1	BASE		383751G01	1	1	1	1	1	1
2	INSULATION - BASE		383752P01	1	1	1	1	1	1
3	COVER - BASE		376510P01	1	1	1	1	1	1
4	HEX HEAD BOLT		FBK0520S0	4	4	4	4	4	4
5	REAR PANEL		270068M01	1	1	1	1	1	1
6	T2 TRUSS HEAD SCREW		FT20408F0	12	12	12	12	12	12
7	COMPRESSOR		P02104-01	1	1	1	1	1	1
8	GROMMET		P00846-01	4	4	4	4	4	4
9	SPACER		P00847-01	4	4	4	4	4	4
10	BOLT		436206-03	4	4	4	4	4	4
11	PROTECTOR		P02105-01	1	1	1	1	1	1
12	PROTECTOR RETAINER		P00839-01	1	1	1	1	1	1
13	SCREW		P00840-01	1	1	1	1	1	1
14	TERMINAL COVER		P00836-01	1	1	1	1	1	1
15	WIRE KIT		P00845-01	1	1	1	1	1	1
16	STARTER		P00842-01	1	1	1	1	1	1
17	RUN CAPACITOR		P02145-01	1	1	1	1	1	1
18	START CAPACITOR		P02106-01	1	1	1	1	1	1
19	CONDENSER - WATER COOLED		P01912-01	1	1	1	1	1	1
20	HEX HEAD BOLT		FBK0408S0	2	2	2	2	2	2
21	EVAPORATOR		2X2459G01	1	1	1	1	1	1
		220AWA-23	2H1833G03	-	1	1	1	1	1
		220AWA-21 220AWB-21 China 220AWA-S-21	208205G04	-	1	1	1	1	1
22	COLLAR		3H3879-01	4	4	4	4	4	4
23	SCREW-EVAPORATOR		4Y4922M02	4	4	4	4	4	4
		220AWA-23 220AWA-21 220AWB-21 China 220AWA-S-21	4Y4922M03	-	4	4	4	4	4
24	WASHER		4H0777-01	4	4	4	4	4	4
25	FLANGE NUT		FNHF06S0	4	4	4	4	4	4

MODEL: **IM-220AWA**
IM-220AWB

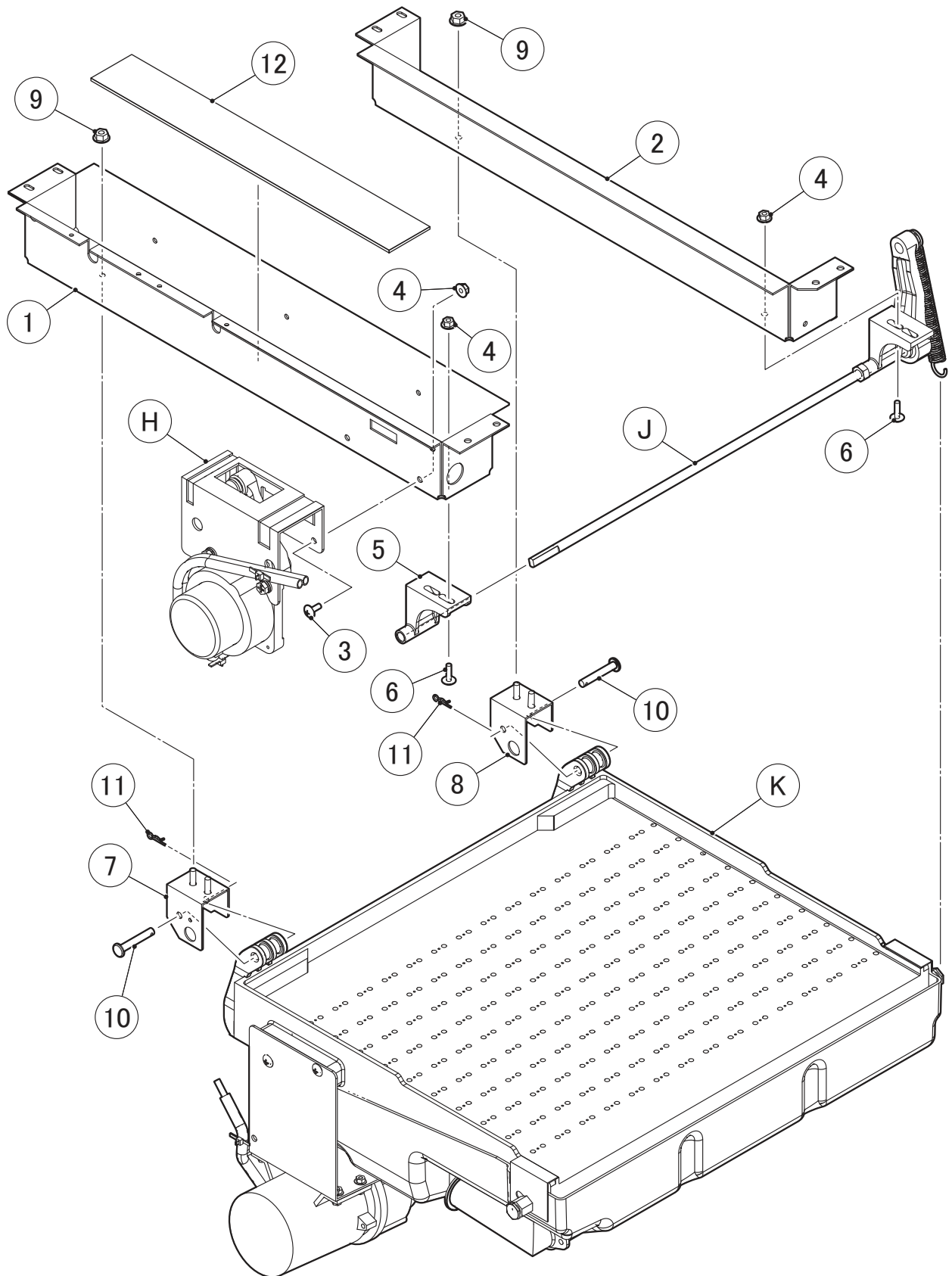
TITLE: **B. REFRIGERATION ASSY**

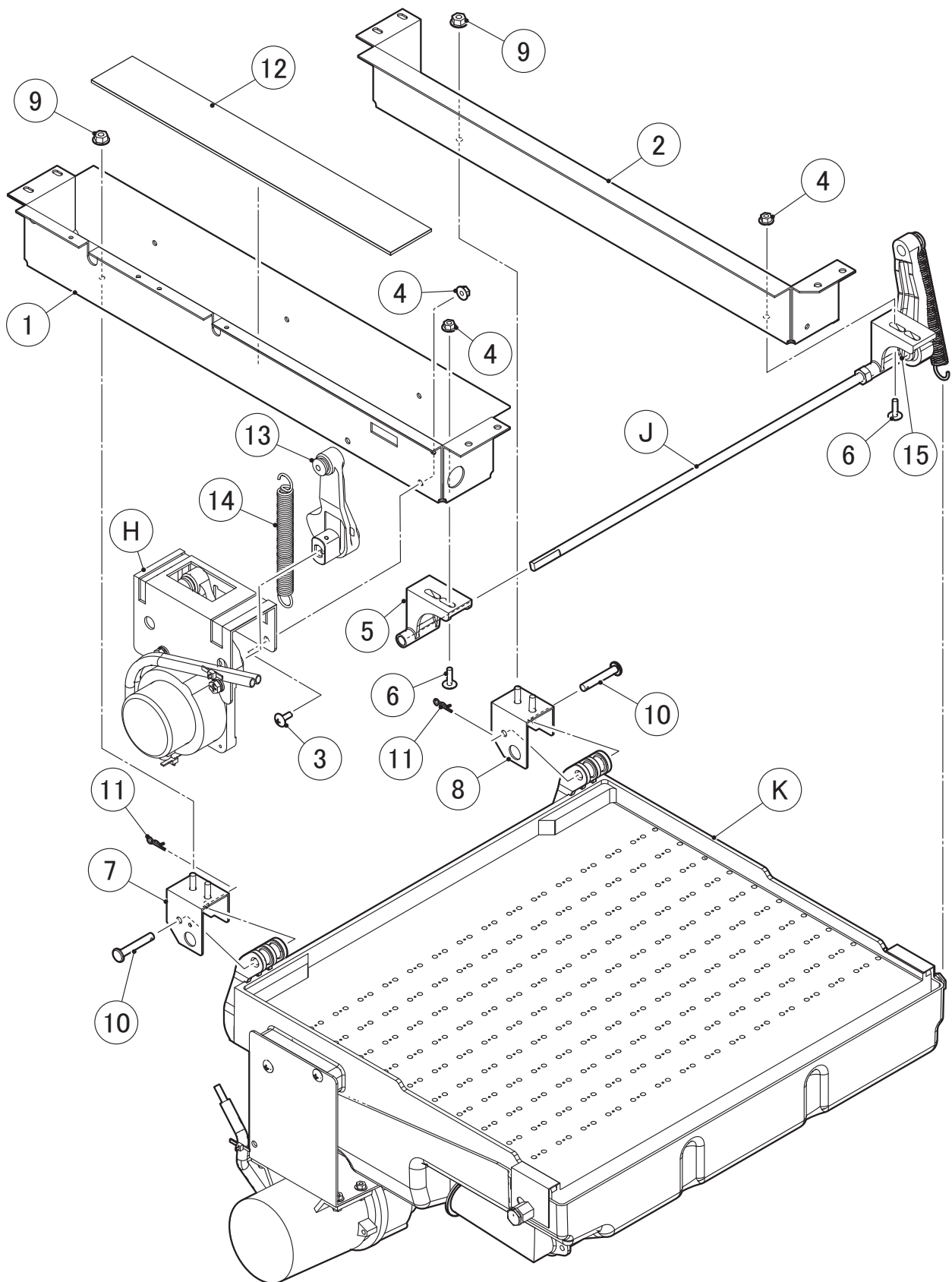
INDEX NO.	DESCRIPTION	MATERIAL OR MODEL NUMBER	PART NUMBER	REQ'D NUMBER					
				F-1	F-2 J-0	J-1	K-1	K-2 M-0	M-1 and later
26	TEE		420041-10	1	1	1	1	1	1
		220AWA-23	420335-01	-	1	1	1	1	1
		220AWA-21 220AWB-21 China 220AWA-S-21 220AWA-Z 220AWB-Z China	430608-02	-	1	1	1	1	1
27	EXPANSION VALVE	China	P04147-01	1	1	1	1	1	1
		Taiwan	P02652-02	-	1	1	1	1	1
		220AWA-23 220AWA-21 220AWB-21 China 220AWA-S-21 220AWA-Z 220AWB-Z China	P01874-01	-	1	1	1	1	1
28	VALVE COVER		3Y3196P01	1	1	1	1	1	1
		220AWA-23 220AWA-21 220AWB-21 China 220AWA-S-21 220AWA-Z 220AWB-Z China	3Y3051P01	-	1	1	1	1	1
29	CLAMP		P00752-01	2	2	2	2	2	2
30	HOLDER - THERMISTOR		3H9642-01	1	1	1	1	1	1
31	S-TITE TRUSS HEAD SCREW		FTS0408M0	1	1	1	1	1	1
32	THERMISTOR-CUBE COTROL		P00350-01	1	1	1	1	1	1
33	SIDE FRAME (R) - TOP SIDE		262273M01	1	1	1	1	1	1
34	Flange Bolt (C-TITE)		FTR0408M0	4	4	4	4	4	4
35	SIDE FRAME (L) - TOP SIDE		262274M01	1	1	1	1	1	1
36	COPPER TUBE (A) - HIGH SIDE		270069G01	1	1	1	1	1	1
37	COPPER TUBE - HOT GAS		270070G01	1	1	1	1	1	1
		220AWA-23 220AWA-21 220AWB-21 China 220AWA-S-21 220AWA-Z 220AWB-Z China	2C0441G01	-	1	1	1	1	1
38	PRESSURE SWITCH		459863-03	1	1	1	1	1	1
39	HOT GAS VALVE		P04242-01	1	1	1	1	1	1
40	STRAINER		P00812-01	1	1	1	1	1	1
41	COPPER TUBE (B) - HIGH SIDE		383755G01	1	1	1	1	1	1
42	HEAT EXCHANGER		270072G01	1	1	1	1	1	1
43	DRIER		P00026-01	1	1	1	1	1	1
44	TIE		C06256-02	1	1	1	1	1	1

MODEL: **IM-220AWA**
IM-220AWB

TITLE: **B. REFRIGERATION ASSY**

INDEX NO.	DESCRIPTION	MATERIAL OR MODEL NUMBER	PART NUMBER	REQ'D NUMBER					
				F-1	F-2 J-0	J-1	K-1	K-2 M-0	M-1 and later
45	COPPER TUBE (C) - HIGH SIDE		482429G01	1	1	1	1	1	1
		220AWA-23 220AWA-21 220AWB-21 China 220AWA-S-21 220AWA-Z 220AWB-Z China	2X3772G01	-	1	1	1	1	1
46	COPPER TUBE - LOW SIDE		482430G01	1	1	1	1	1	1
		220AWA-23 220AWA-21 220AWB-21 China 220AWA-S-21	3Z1107G01	-	1	1	1	1	1
47	REGULATOR BRACKET		482431M01	1	1	1	1	1	1
48	WATER REGULATOR		P04025-01	1	1	1	1	1	1
49	TRUSS HEAD SCREW		FST0406F0	2	2	2	2	2	2
50	COPPER TUBE (A) - WATER CIRCUIT		482433G01	1	1	1	1	1	1
51	COPPER TUBE (B) - WATER CIRCUIT		482434G01	1	1	1	1	1	1
52	COPPER TUBE (C) - WATER CIRCUIT		383761G01	1	1	1	1	1	1
53	COPPER TUBE (B) - CAPILLARY		446047-02	1	1	1	1	1	1
54	COPPER TUBE - ACCESS		383762G01	1	1	1	1	1	1
55	CLAMP		427902-06	1	1	1	1	1	1
56	HOLDER - EXP. VALVE		3C0057M01	1	1	1	1	1	1
57	CLAMP		443461-01	1	1	1	1	1	1
58	Insulation Tube - FSA		H82535160	2	2	2	2	2	2
59	NYLON TIE		7920-0010	7	7	7	7	7	7
60	INSULATION		476763Z01	1	1	1	1	1	1
61	INSULATION TUBE (E)		H72636160	2	2	2	2	2	2
62	Silicone Hose		H10406850	1	1	1	1	1	1
63	TIE	220AWA 220AWB(-21) China 220AWB-Z China	7920-0002	4	4	4	4	4	4
64	WIRE RETAINER	220AWA 220AWB(-21) China 220AWB-Z China	427902-05	2	2	2	2	2	2
65	INSULATION TUBE	220AWA 220AWB(-21) China 220AWB-Z China	H71020050	2	2	2	2	2	2
66	WASHER	220AWA-23	4H1365-05	-	4	4	4	4	4
		220AWA-21 220AWB-21 China 220AWA-S-21	4H1365-06	-	4	4	4	4	4

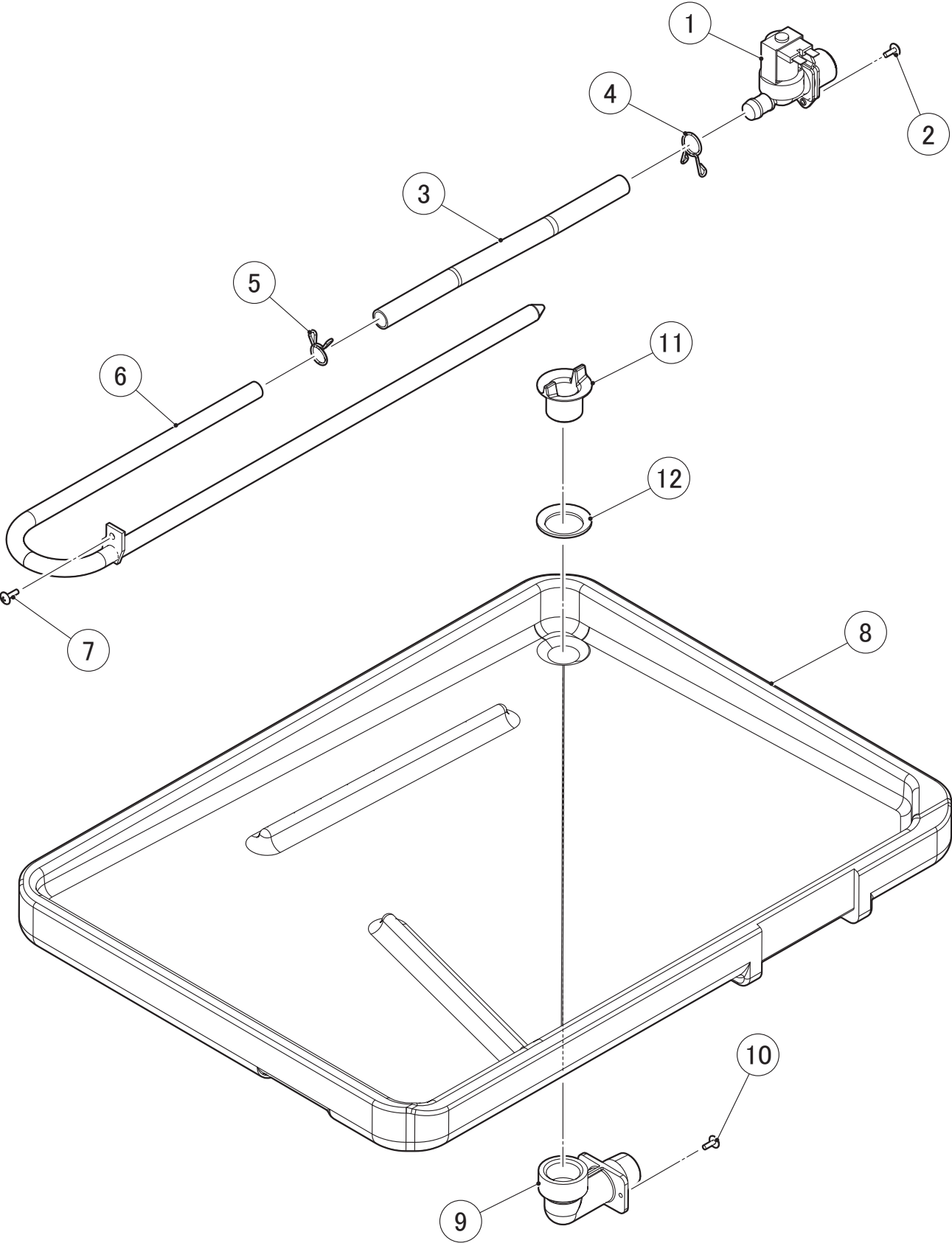




MODEL: **IM-220AWA**
IM-220AWB

TITLE: **C. MECHANISM ASSY**

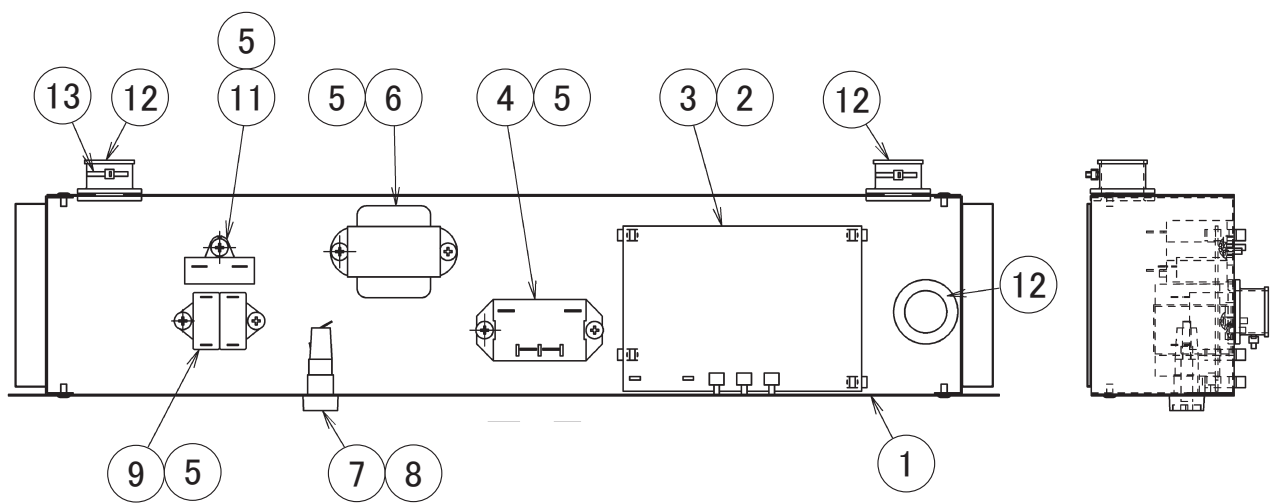
INDEX NO.	DESCRIPTION	MATERIAL OR MODEL NUMBER	PART NUMBER	REQ'D NUMBER						
				F-1	F-2 J-0	J-1	K-1	K-2 M-0	M-1 and later	
H	ACTUATOR MOTOR ASSY		382083A01	1	-	-	-	-	-	
			382083A03	-	1	1	1	1	1	
J	CAM SHAFT ASSY		376555A01	1	-	-	-	-	-	
			376555A02	-	1	1	1	1	1	
K	WATER PAN ASSY		121974A02	1	1	1	1	1	1	
			220AWA-21 China	1H6172A01	-	1	1	1	-	-
			220AWB-21 China	1H6172A02	-	-	-	-	1	1
			220AWA-S-21	1H6172A02	-	-	-	-	1	1
			220AWA-21 HHK	1H6172A02	-	-	-	-	1	1
		220AWA-Z 220AWB-Z China	1H6420A01	-	-	-	-	1	1	
1	TOP FRAME - FRONT		262262M02	1	1	1	1	1	1	
2	TOP FRAME - REAR		262263M02	1	1	1	1	1	1	
3	TRUSS HEAD MACHINE SCREW		FST0512S0	2	2	2	2	2	2	
4	FLANGE NUT		FNHF05S0	6	6	6	6	6	6	
5	BEARING-CAM SHAFT		3X8307-02	1	1	1	1	1	1	
6	TRUSS HEAD MACHINE SCREW		FST0516S0	4	4	4	4	4	4	
7	BEARING PLATE		389682G01	1	1	1	1	1	1	
			220AWA-Z 220AWB-Z China	3Z2079G01	-	-	-	-	1	1
8	BEARING PLATE		389682G02	1	1	1	1	1	1	
9	FLANGE NUT		FNHF06S0	4	4	4	4	4	4	
10	SHAFT (B)		4H1184-02	2	2	2	2	2	2	
11	SNAP PIN		715S-0006	2	2	2	2	2	2	
12	INSULATION - MECHA		4Z0766P01	1	1	1	1	1	1	
13	CAM(A)		306543G04	-	1	1	1	1	1	
14	EXTEN SPRING		4C0092M01	-	1	1	1	1	1	
15	COLLAR	220AWA-21 220AWB-21 China 220AWA-S-21	429124-01	-	1	1	1	1	1	

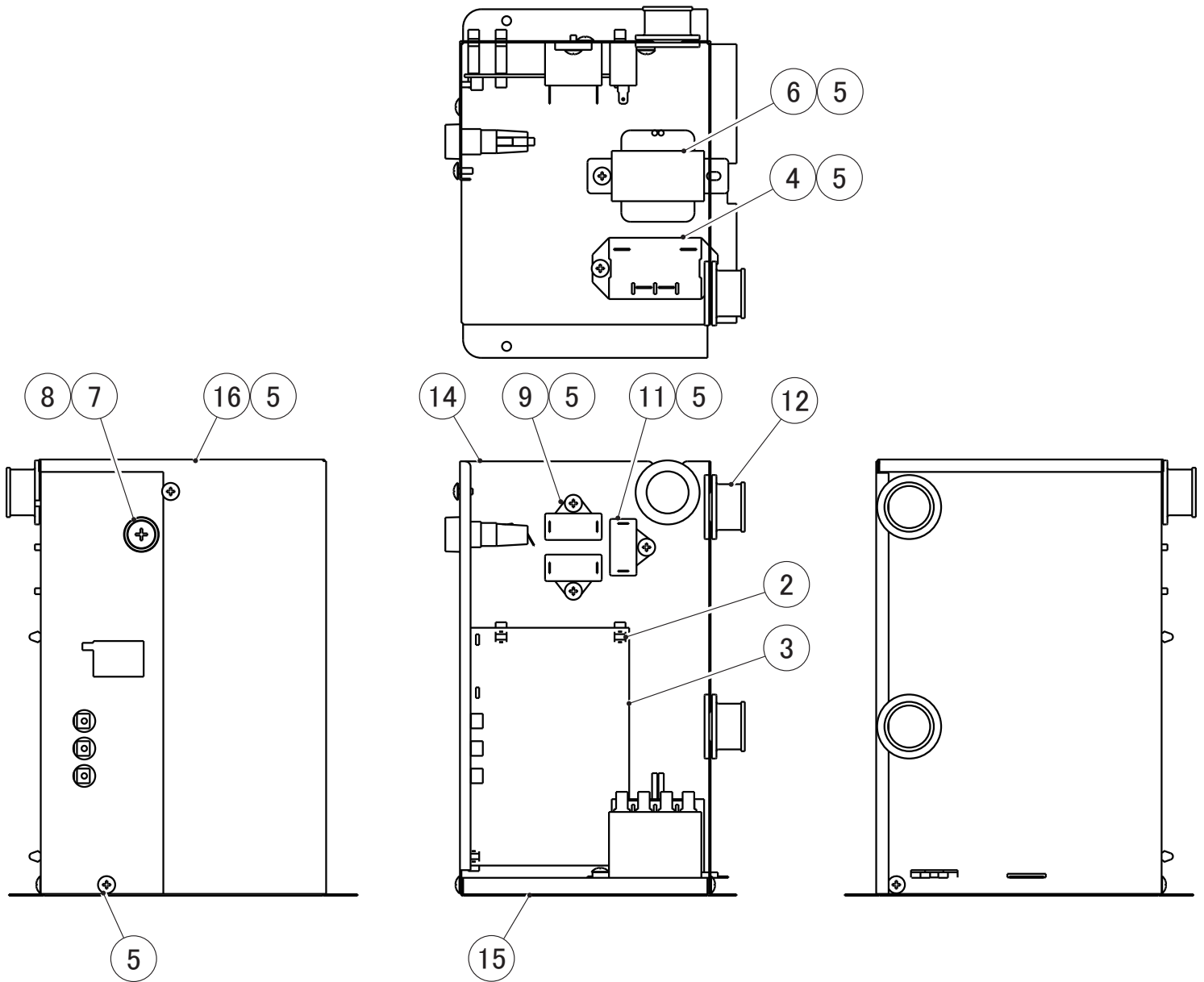


MODEL: **IM-220AWA**
IM-220AWB

TITLE: **D. WATER CIRCUIT ASSY**

INDEX NO.	DESCRIPTION	MATERIAL OR MODEL NUMBER	PART NUMBER	REQ'D NUMBER					
				F-1	F-2 J-0	J-1	K-1	K-2 M-0	M-1 and later
1	WATER VALVE		P02056-01	1	1	1	1	1	1
2	TRUSS HEAD SCREW		FST0408S0	2	2	2	2	2	2
3	SILICONE HOSE		4Y6912R02	1	1	1	1	-	-
			H11215240	-	-	-	-	1	1
4	HOSE CLAMP		435934-03	1	1	1	1	-	-
			P05613-02	-	-	-	-	1	1
5	HOSE CLAMP		435934-02	1	1	1	1	-	-
			P05613-01	-	-	-	-	1	1
6	WATER SUPPLY PIPE		3H9533G01	1	1	1	1	1	1
7	TRUSS HEAD MACHINE SCREW		FST0412S0	1	1	1	1	1	1
8	DRAIN PAN		121933P01	1	1	1	1	1	1
9	FITTING DRAIN		376502P01	1	1	1	1	1	1
10	TRUSS HEAD TAPPING SCREW T2		FT20410M0	2	2	2	2	2	2
11	DRAIN YOKE		418296-01	1	1	1	1	1	1
12	PACKING		413857-01	1	1	1	1	1	1

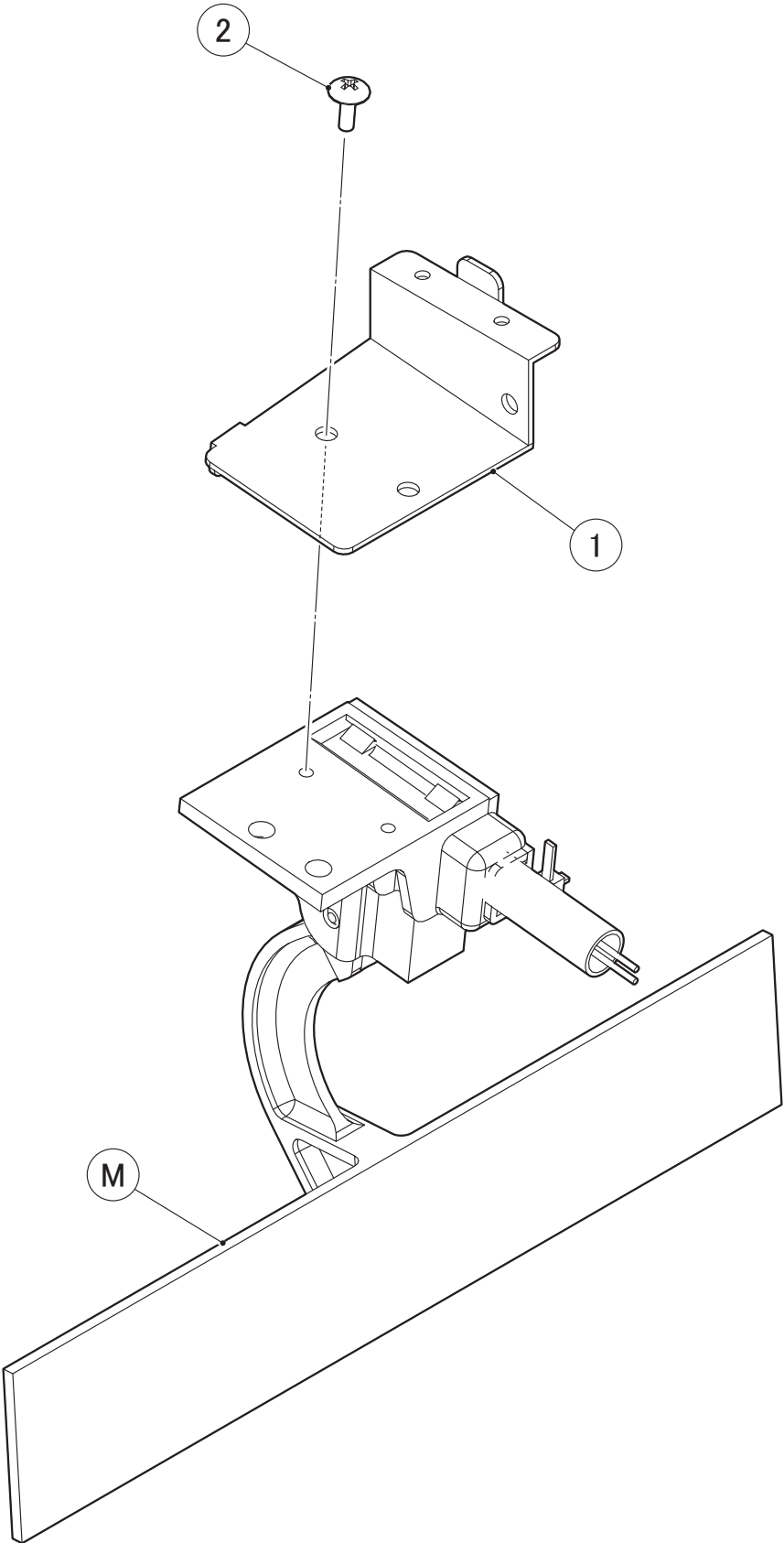


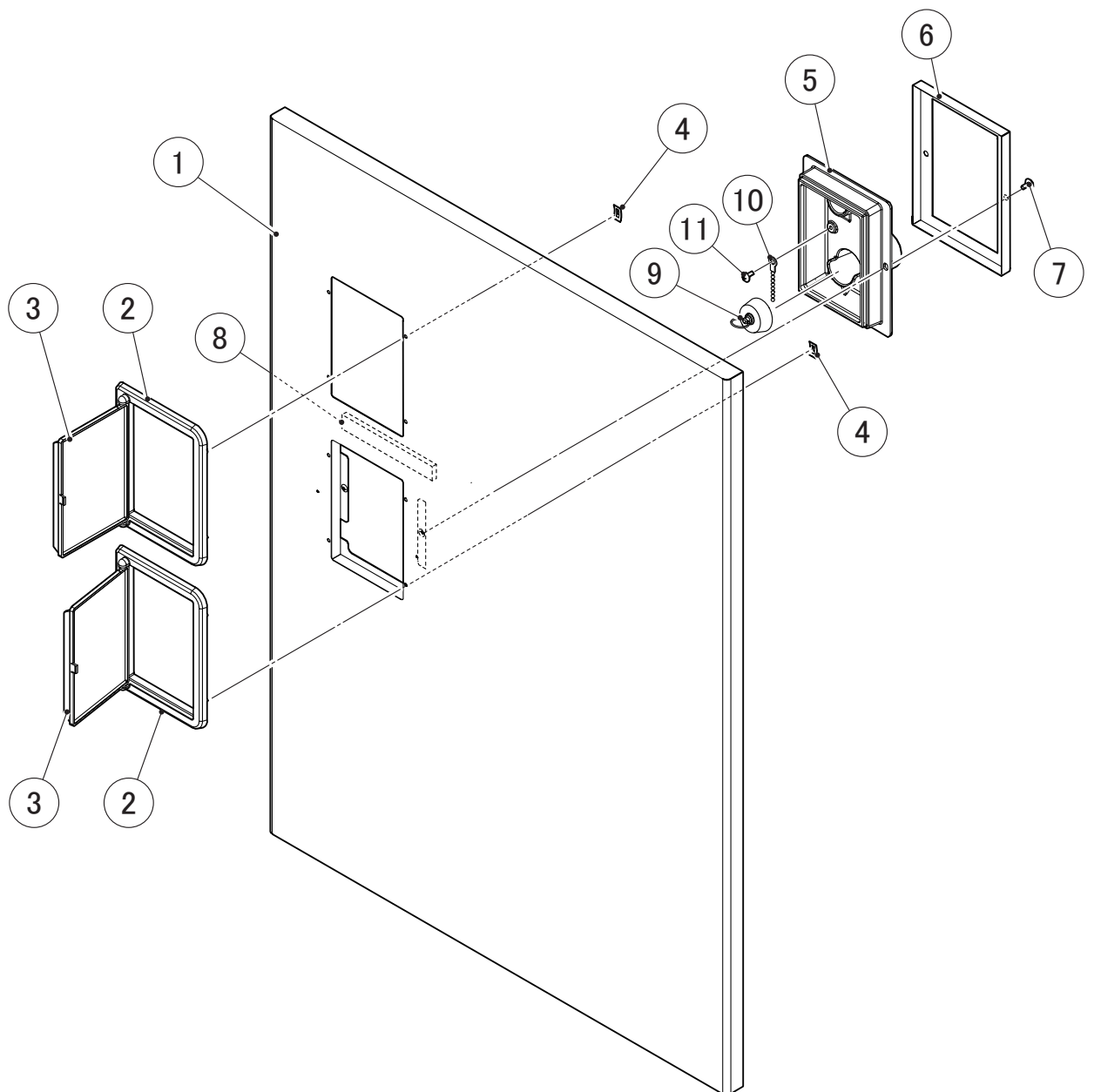


MODEL: **IM-220AWA**
IM-220AWB

TITLE: **E. CONTROL BOX ASSY**

INDEX NO.	DESCRIPTION	MATERIAL OR MODEL NUMBER	PART NUMBER	REQ'D NUMBER					
				F-1	F-2 J-0	J-1	K-1	K-2 M-0	M-1 and later
1	CONTROL BOX	Except 220AWA-Z	477972G02	1	1	1	1	1	1
2	BOARD SUPPORT		414929-02	4	4	4	4	4	4
		220AWA-Z 220AWB-Z China	414929-05	-	-	-	-	4	4
3	CONTROLLER BOARD		P01873-01	1	1	1	1	1	1
		220AWA-Z 220AWB-Z China	P01873-03	-	-	-	-	1	1
4	POWER RELAY		C06306-01	1	1	1	1	1	1
5	TRUSS HEAD TAPPING SCREW T2		FT20408F0	4	4	4	4	4	7
		220AWA-Z 220AWB-Z China	FT20408F0	-	-	-	-	9	9
6	TRANSFORMER		P00012-01	1	1	1	1	1	1
7	FUSE HOLDER		P00014-01	1	1	1	1	1	1
8	FUSE		P01876-01	1	1	1	1	-	-
			P00015-01	-	-	-	-	1	1
9	CAPACITOR		P01870-01	2	2	2	2	2	2
10	TRUSS HEAD TAPPING SCREW T2	Except 220AWA-Z	FT20412F0	3	3	3	3	3	-
11	CAPACITOR	CMPS25B205UWF	P01910-01	1	1	1	1	1	1
12	GROMMET		4H2568-01	3	3	3	3	3	3
13	NYLON TIE	CV-100 Except 220AWA-Z	7920-0002	3	3	3	3	3	3
14	CONTROL BOX (B)	220AWA-Z 220AWB-Z China	2X4619M01	-	-	-	-	1	1
15	CONTROL BOX (A)	220AWA-Z 220AWB-Z China	3Z2077M01	-	-	-	-	1	1
16	CONTROL BOX COVER	220AWA-Z 220AWB-Z China	3Z2076M01	-	-	-	-	1	1

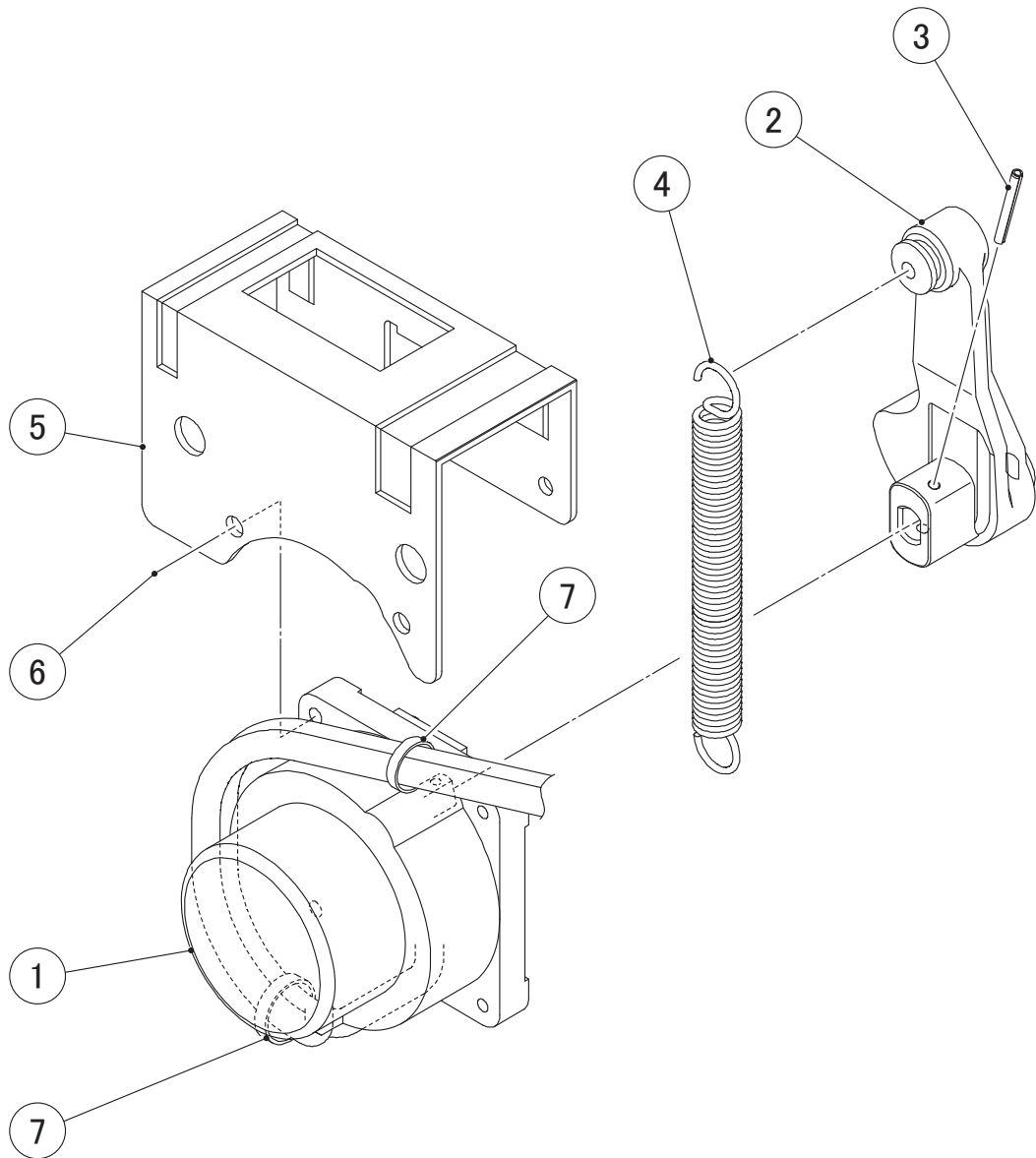


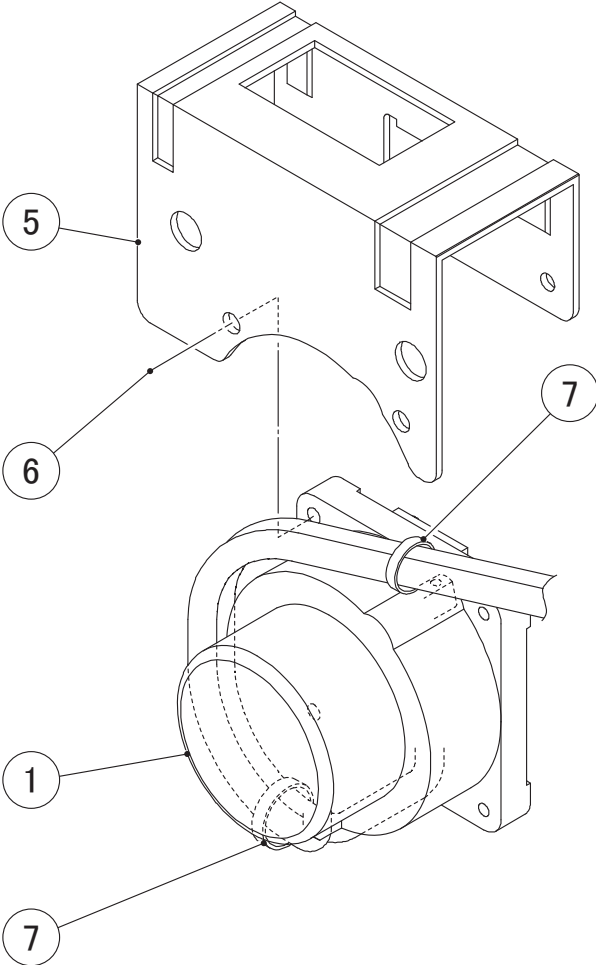


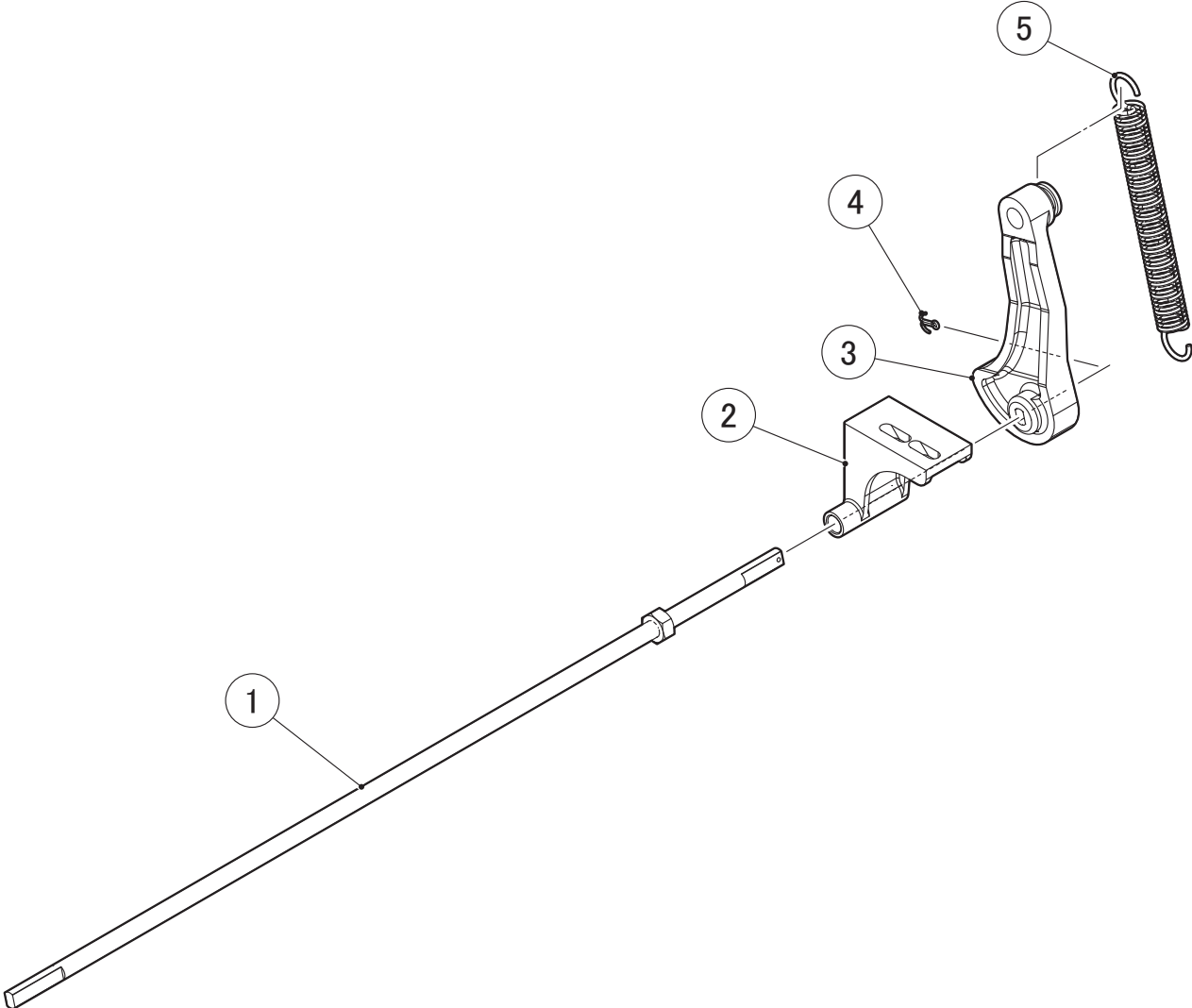
MODEL: **IM-220AWA**
IM-220AWB
Automatic cleaning system

TITLE: **G. FRONT PANEL ASSY**

INDEX NO.	DESCRIPTION	MATERIAL OR MODEL NUMBER	PART NUMBER	REQ'D NUMBER				
				L-0 M-0	M-1 and later			
1	FRONT PANEL (G)		3Z2067001	1	1			
2	FRAME-WINDOW		317932-02	2	2			
3	DOOR		317933-01	2	2			
4	SPEED NUT (TYPE P)		FNSP03F0	8	8			
5	GUIDE - FUNNEL		2X4618P01	1	1			
6	COVER - FUNNEL (B)		3Z1930M01	1	1			
7	T2 TRUSS HEAD SCREW		FT20408S0	2	2			
8	INSULATION - FRONT (C)		4Z1371Z01	1	1			
9	RUBBER PLUG		C05783-01	1	1			
10	CHAIN		TS4494921	1	1			
11	TRUSS HEAD SCREW		FST0408S0	1	1			



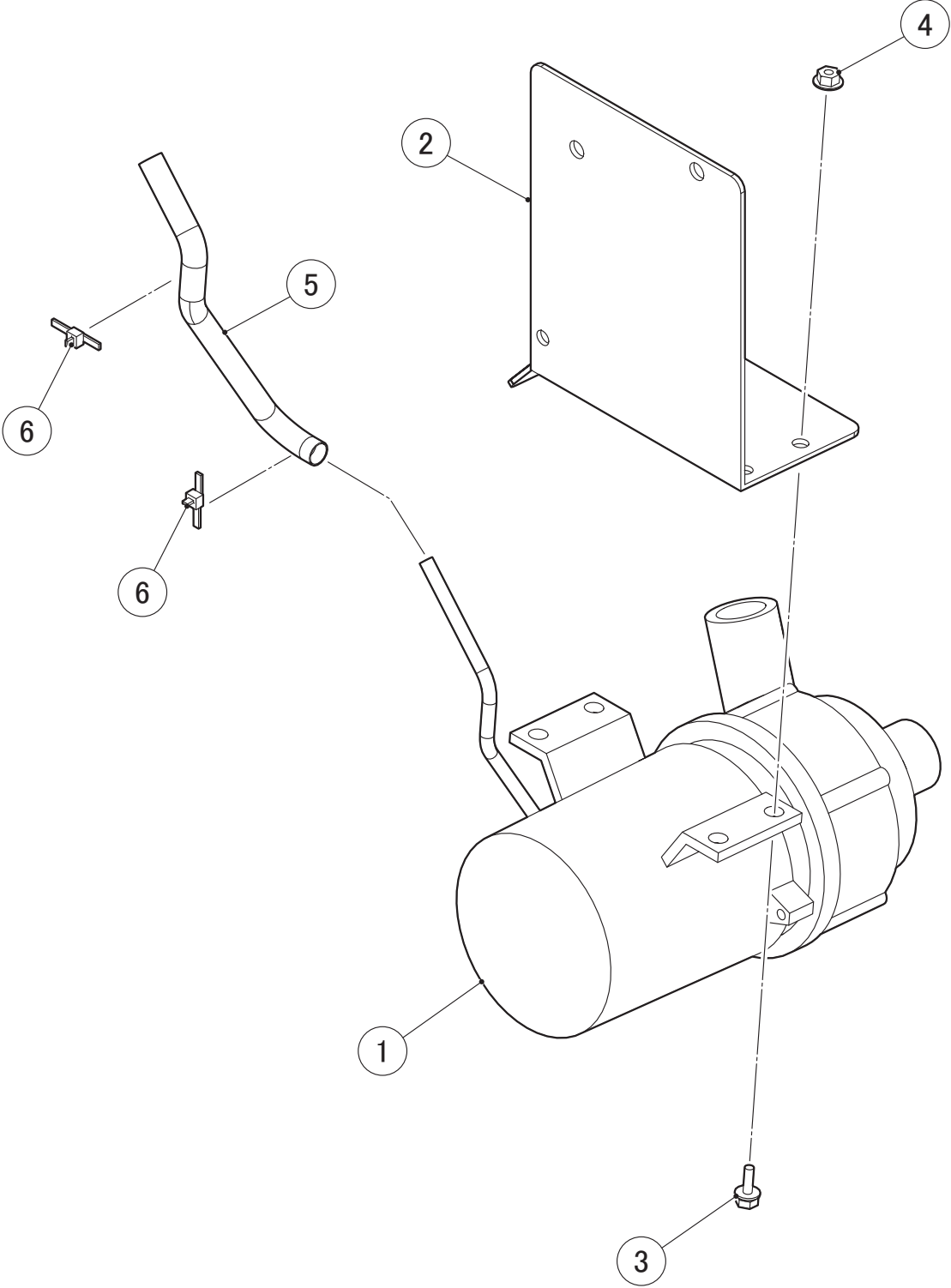




MODEL: **IM-220AWA**
IM-220AWB

TITLE: **K. WATER PAN ASSY**

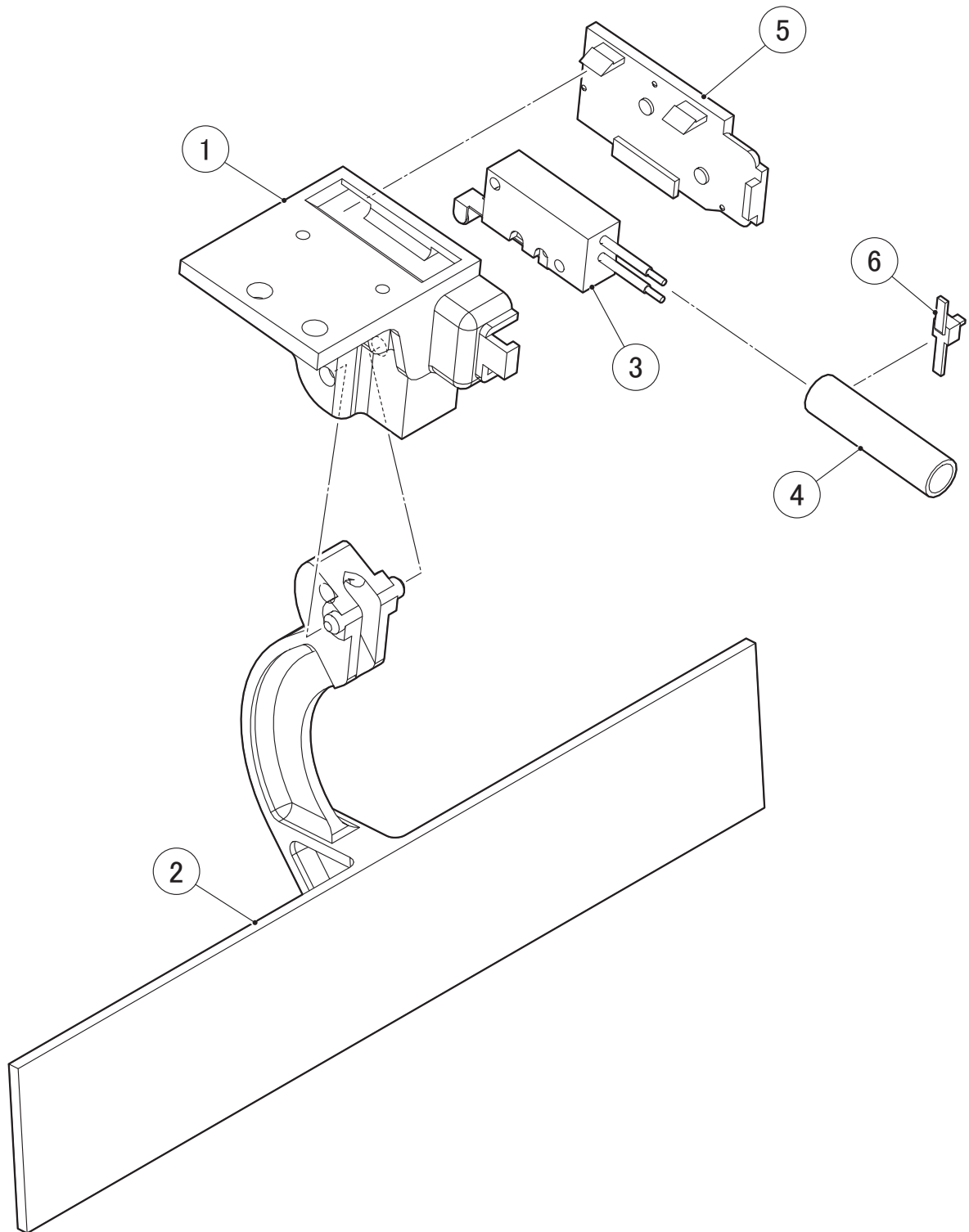
INDEX NO.	DESCRIPTION	MATERIAL OR MODEL NUMBER	PART NUMBER	REQ'D NUMBER					
				F-1	F-2 J-0	J-1	K-1	K-2 M-0	M-1 and later
L	PUMP MOTOR ASSY		377442A02	1	1	1	1	1	1
1	WATER PAN		1H0888-02	1	1	1	1	1	1
		220AWA-Z 220AWB-Z	1H6421P01	-	-	-	-	1	1
2	WATER PLATE		208020G01	1	1	1	1	1	1
		220AWA-21 220AWB-21 220AWA-S-21	208484G01	-	1	1	1	1	1
3	T2 TRUSS HEAD SCREW		FT20408M0	3	3	3	3	3	3
	TRUSS HEAD SCREW	220AWA-21 220AWB-21 220AWA-S-21	FST0408S0	-	3	3	3	3	3
4	BRACKET - WATER PAN		262389P01	2	2	2	2	2	2
5	TRUSS HEAD TAPPING SCREW T2		FT20416M0	4	4	4	4	4	4
6	TRUSS HEAD TAPPING SCREW T2		FT20425M0	4	4	4	4	4	4
	TRUSS HEAD SCREW	220AWA-21 220AWB-21 China 220AWA-S-21	FST0425S0	-	8	8	8	8	8
7	BRACKET		402957-01	2	2	2	2	2	2
8	SCREW SPRING HOOK		4H2582G01	2	2	2	2	2	2
9	TRUSS HEAD TAPPING SCREW T2		FT20516M0	2	2	2	2	2	2
	TRUSS HEAD SCREW	220AWA-21 220AWB-21 China 220AWA-S-21	FST0516S0	-	2	2	2	2	2
10	SUCTION TUBE		4C0039R01	1	1	1	1	1	1
11	DISCHARGE TUBE		4C0038R01	1	1	1	1	1	1
12	PIPE-DRAIN		315530-01	1	1	1	1	1	1
		220AWA-Z 220AWB-Z China	4Z1376Z01	-	-	-	-	1	1
13	TRUSS HEAD MACHINE SCREW		FST0410S0	1	1	1	1	1	1
14	O-RING		7611-G025	1	1	1	1	1	1
15	NUT	220AWA-21 220AWB-21 China 220AWA-S-21	FNH104S0	-	4	4	4	4	4
16	FLOAT SWITCH	220AWA-Z 220AWB-Z China	3C0408G01	-	-	-	-	1	1
17	COVER - FLOAT SWITCH	220AWA-Z 220AWB-Z China	3Z2069P01	-	-	-	-	1	1



MODEL: **IM-220AWA**
IM-220AWB

TITLE: **L. PUMP MOTOR ASSY**

INDEX NO.	DESCRIPTION	MATERIAL OR MODEL NUMBER	PART NUMBER	REQ'D NUMBER					
				F-1	F-2 J-0	J-1	K-1	K-2 M-0	M-1 and later
1	PUMP MOTOR		P02715-02	1	1	1	1	1	1
2	BRACKET/PUMP		377441M02	1	1	1	1	1	1
3	HEX HEAD BOLT (SPRING WASHER AND FLAT WASHER)		FBK0412S0	4	4	4	4	4	4
4	FLANGE NUT		FNHF04S0	4	4	4	4	4	4
5	SILICONE HOSE		3C0359Z01	1	1	1	1	1	1
6	NYLON TIE	CV-100	7920-0002	2	2	2	2	2	2

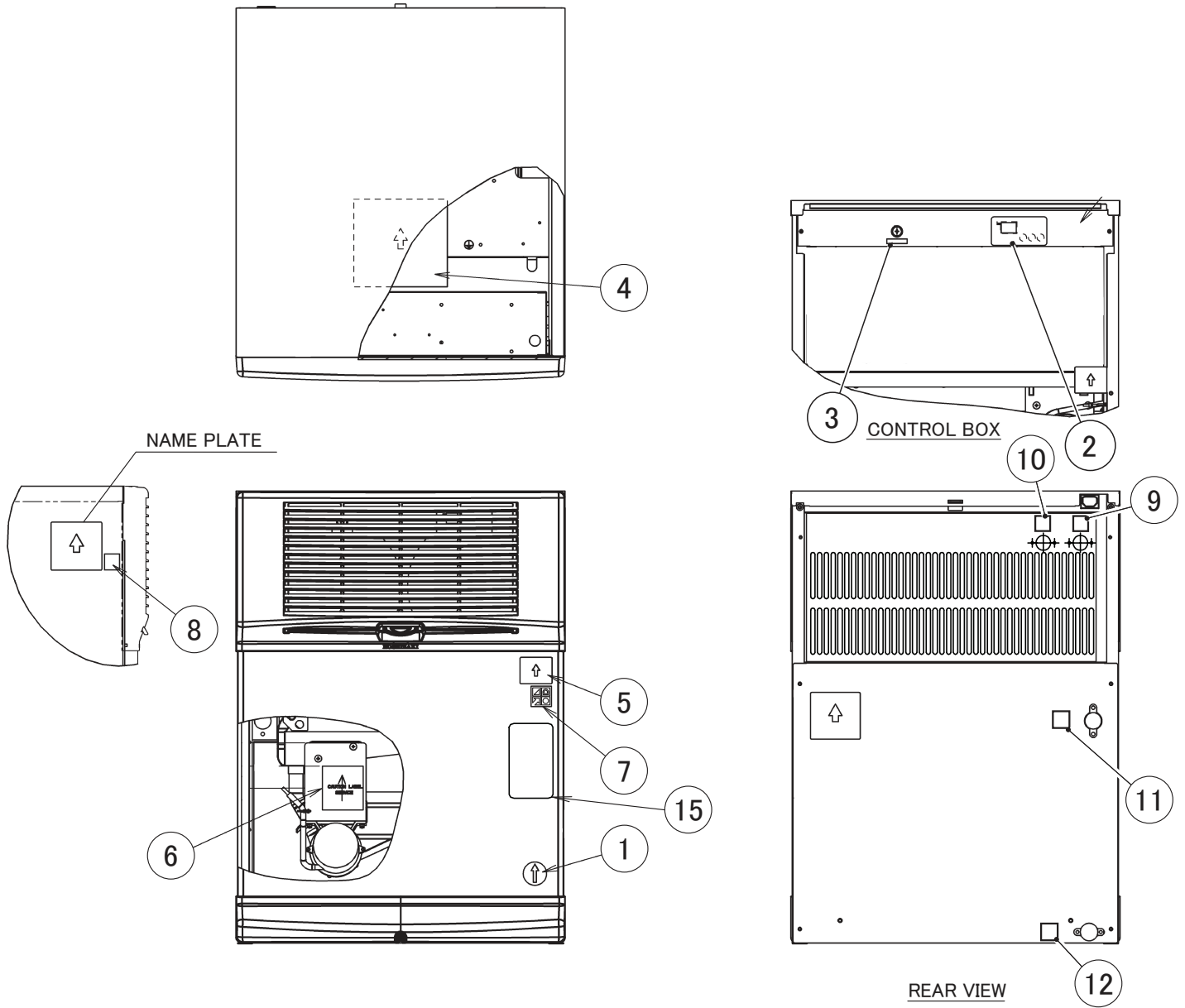


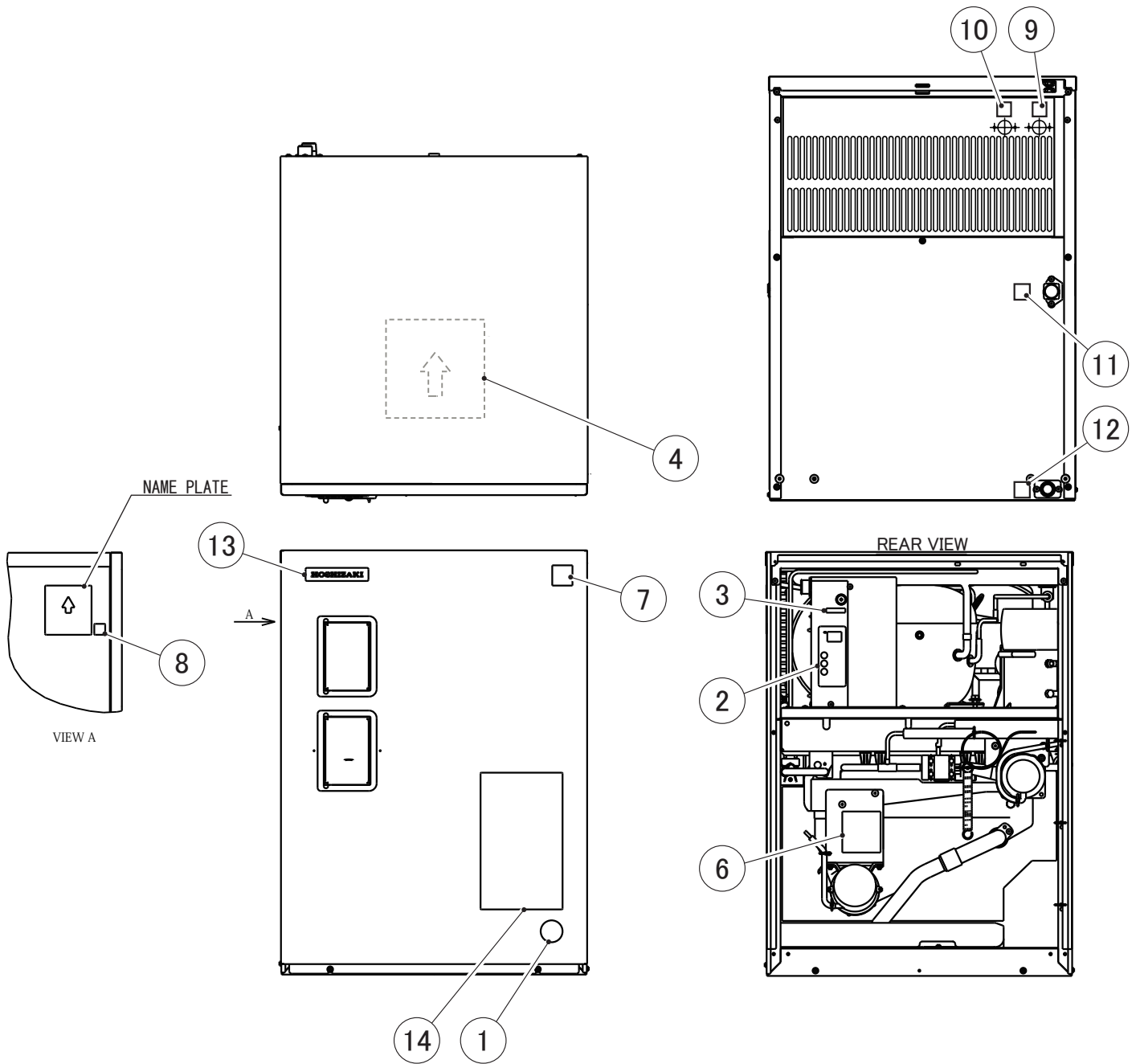
MODEL: **IM-220AWA**
IM-220AWB

TITLE: **M. BIN SWITCH ASSY**

INDEX NO.	DESCRIPTION	MATERIAL OR MODEL NUMBER	PART NUMBER	REQ'D NUMBER						
				F-1	F-2 J-0	J-1	K-1	K-2 L-0 Until production in June 2021	L-0 From production in July 2021 M-0	M-1 and later
1	SWICH BOX		1C0350P01	1 (Note1)	1 (Note1)	1 (Note1)	1 (Note1)	1 (Note1)	1	1
2	SWICH - ACTUATOR		2H7202-01	1	1	1	1	1	1	1
3	BIN CONTROL SWITCH (G)		3Z2341G01	1	1	1	1	1	1	1
4	TUBE-SILICONE		477638Z01	1	1	1	1	1	1	1
5	SWITCH BOX COVER		2C0203P01	1 (Note1)	1 (Note1)	1 (Note1)	1 (Note1)	1 (Note1)	1	1
6	NYLON TIE	CV-100	7920-0002	1	1	1	1	1	1	1

(Note1) Replacement of NO. 1 and NO.5 must be done at the same time.

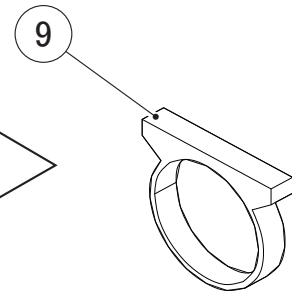
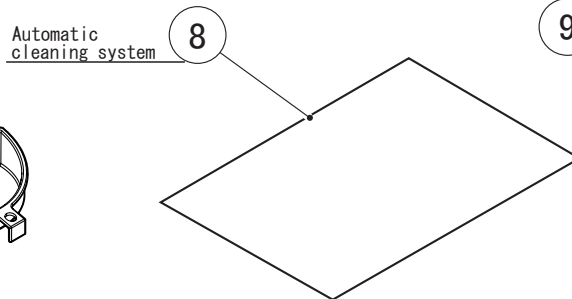
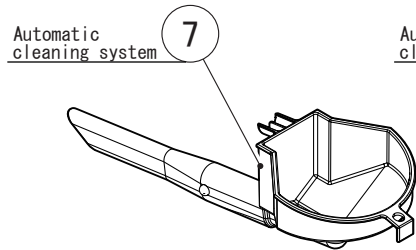
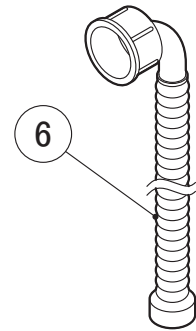
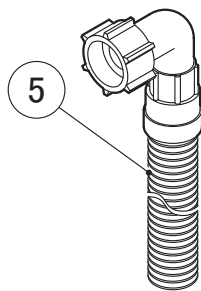
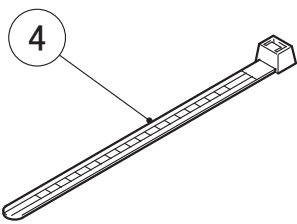
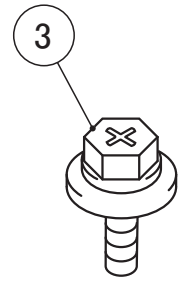
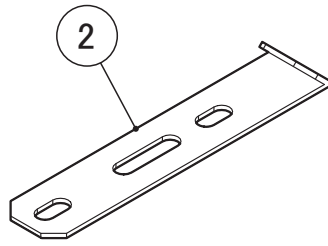
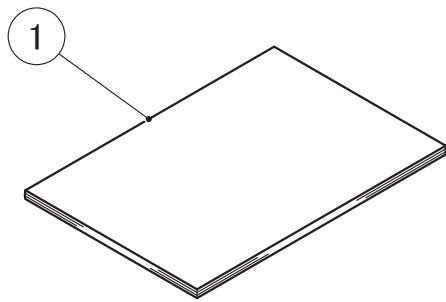




MODEL: **IM-220AWA**
IM-220AWB

TITLE: **P. LABEL LOCATION**

INDEX NO.	DESCRIPTION	MATERIAL OR MODEL NUMBER	PART NUMBER	REQ'D NUMBER					
				F-1	F-2 J-0	J-1	K-1	K-2 M-0	M-1 and later
1	LABEL - PENGUIN		468184-01	1	1	1	1	1	1
2	CONTROL LABEL	China	482404L01	1	1	1	-	-	-
			486336L01	-	-	-	1	1	1
		Taiwan HHK	475006L01	-	1	1	-	-	-
			485811L01	-	-	-	1	1	1
	CONTROL LABEL (A)	220AWA-Z	486335L01	-	-	-	-	1	-
220AWA-Z 220AWB-Z China		4C0210L01	-	-	-	-	-	1	
3	LABEL - FUSE		466798-01	1	1	1	1	1	1
4	WIRING LABEL	China	379740L01	1	1	1	1	1	1
		Taiwan HHK	376561L01	-	1	1	1	1	1
		220AWA-Z 220AWB-Z China	3Z2078L01	-	-	-	-	1	1
5	LABEL - AIR FILTER	China (Except 220AWA-Z)	477262L01	1	1	1	1	1	1
		Taiwan HHK	477257L01	-	1	1	1	1	1
6	CAUTION LABEL - SERVICE	China	471348L01	1	1	1	1	1	1
		Taiwan HHK	471180L01	-	1	1	1	1	1
7	LABEL - HACCP		476519L01	1	1	1	1	1	1
8	LABEL REGULATION A		482347L01	1	1	1	1	1	1
9	LABEL - INLET	China	482403L01	1	1	1	1	1	1
		Taiwan HHK	418029-04	-	1	1	1	1	1
10	LABEL - OUTLET	China	482403L02	1	1	1	1	1	1
		Taiwan HHK	418029-05	-	1	1	1	1	1
11	LABEL - INLET	China	482403L03	1	1	1	1	1	1
	LABEL - WATER INLET	Taiwan HHK	418029-03	-	1	1	1	1	1
12	LABEL - OUTLET	China	482403L04	1	1	1	1	1	1
	LABEL - DRAIN WATER	Taiwan HHK	418029-01	-	1	1	1	1	1
13	EMBLEM	220AWA-Z 220AWB-Z China	340842-01	-	-	-	-	1	1
14	INSTRUCTION LABEL	220AWA-Z 220AWB-Z China	282167L01	-	-	-	-	1	1
15	INSTRUCTION LABEL	EXCEPT 220AWA-Z,220AWB-Z China	485832L01	-	-	-	-	-	1



MODEL: **IM-220AWA**
IM-220AWB

TITLE: **Q. ACCESSORIES**

INDEX NO.	DESCRIPTION	MATERIAL OR MODEL NUMBER	PART NUMBER	REQ'D NUMBER					
				F-1	F-2 J-0	J-1	K-1	K-2 M-0	M-1 and later
1	INSTRUCTION MANUAL		L1M028306	1	1	1	1	1	1
		220AWB China 220AWB (-21) China HHK 220AWB-Z China	L1M028311	-	-	-	-	-	1
2	UNIVERSAL BRACE		473048M01	2	2	2	2	2	2
3	HEX HEAD BOLT (SPRING WASHER AND FLAT WASHER)		FBK0408S0	2	2	2	2	2	2
4	TIE	CV-100	7920-0002	3	3	3	3	3	3
5	OUTLET HOSE		C06308-01	1	1	1	1	1	1
6	HOSE		P01401-01	1	1	1	1	1	1
7	FUNNEL (G)	220AWA-Z 220AWB-Z China	4Z1281G01	-	-	-	-	1	1
8	INSTRUCTION SHEET	220AWA-Z 220AWB-Z China	282483L01	-	-	-	-	1	1
9	HOSE CLAMP		435947-09	-	-	-	-	-	1
10	CONVERSION JOINT (1/2-3/4)	For China IM-220AWA IM-220AWB IM-220AWA-21 IM-220AWB-21 IM-220AWA-Z IM-220AWB-Z	3C0917M01	-	-	-	-	-	2